

Flight Procedures Cover Page	Task Action: FLIGHT CHECK	Task Type: IAP	Estimated Chart Date: 03/19/2026	APWS Task ID: 18E44DA50447478590A87D7C3C013467	APWS Project ID: CCA9602746D24D198F4523AC859A1299
Procedure: RNAV (GPS) RWY 35 AMDT 1B		Enroute: NO	Specialist: Bruce, Richard		Agreement Number:
Airport ID: KARA			Airport City: NEW IBERIA		State: LA
Facility ID:	Facility Type:	Flight Inspection Remark Type: New FC Slot			

Procedure Comments:

CANCELS FDC NOTAM 5/1116.

NEW CRC REMAINDER: C3D96564.

KMZ FILES (2):

1. KARA_RNAV_(GPS)_RWY_35_AMDT_1B_1 (FULL PROCEDURE).
2. KARA_RNAV_(GPS)_RWY_35_AMDT_1B_2 (LNAV/VNAV MISSED APPROACH PENETRATION).

ACTIVE DATA USED FOR KARA AIRPORT AND RUNWAYS.

CONTACT RAKE MCGRAW, AVJ-A422, (405) 954-8711.



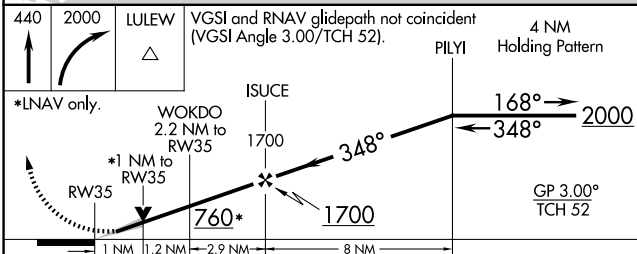
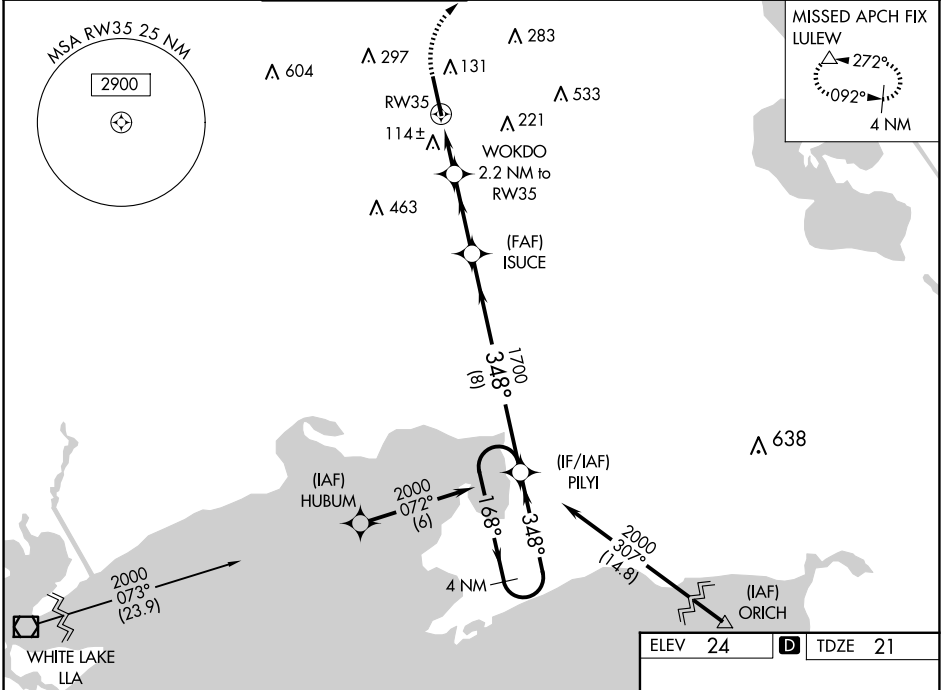
WAAS CH 40301 W35A	APP CRS 348°	Rwy Idg TDZE 21 Apt Elev 24	8002
---------------------------------	------------------------	---	-------------

OLD

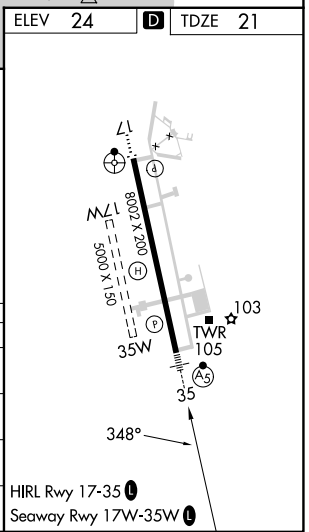
RNAV (GPS) RWY 35

ACADIANA RGNL (A.R.A.)

RNP APCH.				MALSR	MISSED APPROACH: Climb to 440 then climbing right turn to 2000 direct LULEW and hold.		
<p>▼ For uncompensated Baro-VNAV systems, LNAV/VNAV NA below -3°C or above 54°C. For inop ALS, increase LNAV/VNAV all Cats visibility to ½ SM and LNAV Cats C/D visibility to 1 SM. Circling NA to Rwy 17W and 35W.</p>							
ASOS 133.325	LAFAYETTE APP CON* 121.1 268.7	ACADIANA TOWER* 125.0 (CTAF) 239.3	GND CON 121.7	CLNC DEL 121.7	CLNC DEL 118.05 (when twr closed)	UNICOM 122.95	122.7



CATEGORY	A	B	C	D
LPV DA		221-½	200 (200-½)	
LNAV/DA		303-½	282 (300-½)	
LNAV MDA	380-½	359 (400-½)	380-¾	359 (400-¾)
CIRCLING	440-1 416 (500-1)	480-1 456 (500-1)	600-1½ 576 (600-½)	680-2 656 (700-2)



SC-4, 04 SEP 2025 to 02 OCT 2025

SC-4, 04 SEP 2025 to 02 OCT 2025