

Flight Procedures Cover Page	Task Action: FLIGHT CHECK	Task Type: Textual DP	Estimated Chart Date: 08/07/2025	APWS Task ID: 19DA6C373354434A81F3DB07B449F050	APWS Project ID: C5F80AB794CD43C2B2E765283AEA31AE
Procedure: TAKEOFF MINIMUMS AND OBSTACLE DP AMDT 4A		Enroute: NO	Specialist: Russell, Todd		Agreement Number:
Airport ID: KCZG			Airport City: ENDICOTT		State: NY
Facility ID:	Facility Type:	Flight Inspection Remark Type: New FC Slot			
<div>Procedure Comments: ACTIVE DATA USED FOR KCZG AIRPORT AND RUNWAYS. CANCELS T-NOTAM FDC 1/5733. APPROVED LETTER ON FILE FOR RWY 3 CLIMB GRADIENT: 515 FT/NM TO 1700. APPROVAL FOR RWY 21 CLIMB GRADIENT: 645 FT/NM TO 2000. UPDATED LOW CLOSE-IN OBSTACLES. UPDATED RWY 3 TAKE OFF MINIMUMS: STANDARD WITH MINIMUM CLIMB OF 515 FT/NM TO 1700, OR 700-3 WITH MINIMUM CLIMB OF 271 FT/NM TO 1700, OR 1800-3 FOR VCOA. UPDATED RWY 21 TAKE OFF MINIMUMS: STANDARD WITH MINIMUM CLIMB OF 645 FT/NM TO 2000, OR 900-3 WITH MINIMUM CLIMB OF 452 FT/NM TO 2300, OR 1800-3 FOR VCOA. CONTACT ROBERT HAMILTON, AJV-A433, AT 405-954-4608.</div> <div>QUALITY 23 CHECKED</div>					

FIPC BASIC FORM						
PROCEDURE: TAKEOFF MINIMUMS AND OBSTACLE DP AMDT 4A			AIRPORT NAME: TRI-CITIES		AIRPORT ID: KCZG	SPECIAL CONTROL NO: YP-05-103-25
FAC ID: KCZG		CITY: ENDICOTT			ST: NY	ORIG CHART DATE: 08/07/2025
DFL TYPE: PROC/T	THIRD PARTY: <input type="checkbox"/> YES	EST. TIME ON SITE: 0.4	REIMB. NUMBER:	PTS TASK ID: 19DA6C373354434A81F3DB07B449F050		
PREFLIGHT NOTES						
REVIEWER:					DATE:	
COMMENTS:					CHECK ONE:	
					<input type="checkbox"/> FLT CK REQ <input type="checkbox"/> NFCR <input type="checkbox"/> REJECT	
						YES
					CPV COMPLETE?	X
PROCEDURE RESULTS						
INSPECTION DATE: 06/24/2025	CREW #: VN423	N #: N77	INSTRUMENT PROCEDURE STATUS: <input checked="" type="checkbox"/> SAT <input type="checkbox"/> SAT W/CHANGES <input type="checkbox"/> UNSAT		ARINC CODING: <input type="checkbox"/> SAT <input type="checkbox"/> SAT/GOLD <input type="checkbox"/> UNSAT	
FLIGHT INSPECTOR SIGNATURE: terry hester @ 06/24/2025 17:25			PRINTED NAME: HESTER, TERRY LEE			NOTAM INITIATED? <input type="checkbox"/> YES <input checked="" type="checkbox"/> NO
FLIGHT INSPECTOR REMARKS: Special Number YP-05-103-25. Tri-Cities, Endicott, NY. Takeoff Min's and ODP Amdt 4A, Flown Sat.						
IN-FLIGHT OBSTACLE REPORT						
OBSTRUCTION ID #:	COORDINATES OR LOCATION:	GNSS ALTITUDE (MSL):	BAROMETRIC ALTITUDE (MSL):	HEIGHT ABOVE GROUND LEVEL:		



Federal Aviation Administration

Memorandum

To: Bruce DeCleene, Manager, Flight Technologies and Procedures Division
THRU: Danny E. Hamilton, Manager, Flight Procedure Implementation & Oversight Branch

From: Lonnie Everhart, Manager, Instrument Flight Procedures (IFP) Coordination Team, AJV-5310

Subject: Approval Request: Tri-Cities, Endicoot, NY (KCZG) ODP

Tri-Cities (KCZG) TAKEOFF MINIMUMS AND OBSTACLE DEPARTURE PROCEDURES RWY 21.

Climb gradient exceeds 500 feet per NM, 8260.3F. 14-1-4-a. and 8260.46J. 2-1-1-d.(2).

The computed climb gradient RWY 21 645 ft per NM to 2000.

The obstacle driving this climb gradient is a 1528 ft MSL surveyed tree located 8659.66 ft from RWY 21 DER. There is also an option of a SEE-AND-AVOID with a Ceiling/Visibility of 900 and 3 SM respectively.

Request approval to publish a RWY 21: STANDARD WITH MINIMUM CLIMB OF 645 FT/NM TO 2000, OR 900-3 WITH MINIMUM CLIMB OF 452 FT/NM TO 2300, OR 1800-3 FOR VCOA.



Federal Aviation Administration

Memorandum

Date: APR 09 2010

To: Manager, Production Integration Team, AJW-374

From: *J. H. Smith*
Manager, Flight Technologies and Procedures Division, AFS-400

Prepared by: Flight Procedure Implementation & Oversight Branch, AFS-460

Subject: Approval Request; AJW-374 Memorandum Dated 03/09/2010

Your request to utilize a climb gradient(s) more than 500 feet/NM on the "TAKEOFF MINIMUMS AND OBSTACLE DEPARTURE PROCEDURES (ODP), AMDT 4" for RWY 3 and 21 at Tri-Cities, Endicott, NY was discussed at Flight Standards' Procedure Review Board (PRB) and is approved.

Please direct all inquiries to Danny E. Hamilton, AFS-460, at (405) 954-9359.

Attachments

cc:
AEA-230/AJW-327
AFS-400/410/420/440/460

TAKEOFF MINIMUMS, (OBSTACLE) DEPARTURE PROCEDURES, AND DIVERSE VECTOR AREA (RADAR VECTORS)

24081

ENDICOTT, NY

TRI-CITIES (CZG)

OLD

TAKEOFF MINIMUMS AND (OBSTACLE) DEPARTURE PROCEDURES

AMDT 4 03JUN10 (10154) (FAA)

TAKEOFF MINIMUMS:

Rwy 3, std. w/ min. climb of 515' per NM to 1700 or 700-2 with min. climb of 242 to 2000 or 1600-2 ½ for climb in visual conditions.

Rwy 21, std. w/ min. climb of 604' per NM to 2100 or 900-3 with min. climb of 470 to 2200 or 1600-2 ½ for climb in visual conditions.

DEPARTURE PROCEDURE:

Rwy 3, climb heading 036° to 2000 before proceeding on course or for climb in visual conditions: cross Tri-Cities airport at or above 2300 before proceeding on course.

Rwy 21, climb heading 216° to 2200 before proceeding on course or for climb in visual conditions: cross Tri-Cities airport at or above 2300 before proceeding on course.

TAKEOFF OBSTACLE NOTES:

Rwy 3, tree 1' from DER, 418' left of centerline, 78' AGL/907' MSL.

Multiple trees and train on tracks beginning 163' from DER, 56' left of centerline, up to 110' AGL/1469' MSL.

Multiple trees and tower beginning 1699' from DER, 259' right of centerline, up to 106' AGL/915' MSL.

Rwy 21, multiple trees, pole and tower beginning 51' from DER, 63' left of centerline, up to 84' AGL/1473' MSL. Multiple trees beginning 751' from DER, 73' right of centerline, up to 86' AGL/1175' MSL.

FARMINGDALE, NY

REPUBLIC (FRG)

TAKEOFF MINIMUMS AND (OBSTACLE) DEPARTURE PROCEDURES

AMDT 7 08JAN15 (15008) (FAA)

TAKEOFF MINIMUMS:

Rwy 1, 300-1¼ or std. w/min. climb of 220' per NM to 300, or alternatively, with standard takeoff minimums and a normal 200' per NM climb gradient, takeoff must occur no later than 1500' prior to DER.

Rwy 32, 300-1¼ or std. w/ min. climb of 215' per NM to 400, or alternatively, with standard takeoff minimums and a normal 200' per NM climb gradient, takeoff must occur no later than 1500' prior to DER.

DEPARTURE PROCEDURE:

Rwy 1, climb heading 013° to 700 before turning left.

Rwy 32, climb heading 326° to 700 before turning right.

TAKEOFF OBSTACLE NOTES:

Rwy 1, fence 3' from DER, 421' left of centerline, 9' AGL/88' MSL.

Building, stack and trees beginning 264' from DER, 246' right of centerline, up to 55' AGL/134' MSL.

Trees beginning 315' from DER, 568' right of centerline, up to 76' AGL/155' MSL.

Pole and trees beginning 1266' from DER, 279' right of centerline, up to 54' AGL/137' MSL.

Tank, elevator and trees beginning 1382' from DER, 447' left of centerline, up to 69' AGL/141' MSL.

Tank 5858' from DER, 1440' left of centerline, 151' AGL/244' MSL.

Rwy 14, pole and vehicles on road beginning 181' from DER, 73' right of centerline, up to 17' AGL/74' MSL.

Trees beginning 534' from DER, 97' left of centerline, up to 33' AGL/88' MSL.

Trees beginning 915' from DER, 24' right of centerline, up to 66' AGL/119' MSL.

Pole and trees beginning 1124' from DER, 245' left of centerline, up to 50' AGL/104' MSL.

Trees 2135' from DER, 331' left of centerline, up to 77' AGL/124' MSL.

Rwy 19, sign, building, poles, and trees beginning 77' from DER, 208' right of centerline, up to 43' AGL/102' MSL.

Trees beginning 182' from DER, 498' left of centerline, up to 43' AGL/100' MSL.

Pole 861' from DER, 70' left of centerline, 41' AGL/99' MSL.

Poles and trees beginning 879' from DER, 14' right of centerline, up to 56' AGL/115' MSL.

Poles and trees beginning 1207' from DER, 308' left of centerline, up to 70' AGL/124' MSL.

Tower 2453' from DER, 318' right of centerline, 84' AGL/141' MSL.

Rwy 32, fence 146' from DER, 243' right of centerline, 12' AGL/88' MSL.

Pole 329' from DER, 451' left of centerline, 30' AGL/103' MSL.

Building and poles beginning 1489' from DER, 188' left of centerline, up to 69' AGL/142' MSL.

Trees 1690' from DER, 22' right of centerline, up to 52' AGL/124' MSL.

Tank 1.3 NM from DER, 1122' left of centerline, 107' AGL/296' MSL.

FISHERS ISLAND, NY

ELIZABETH FLD (0B8)

TAKEOFF MINIMUMS AND (OBSTACLE) DEPARTURE PROCEDURES

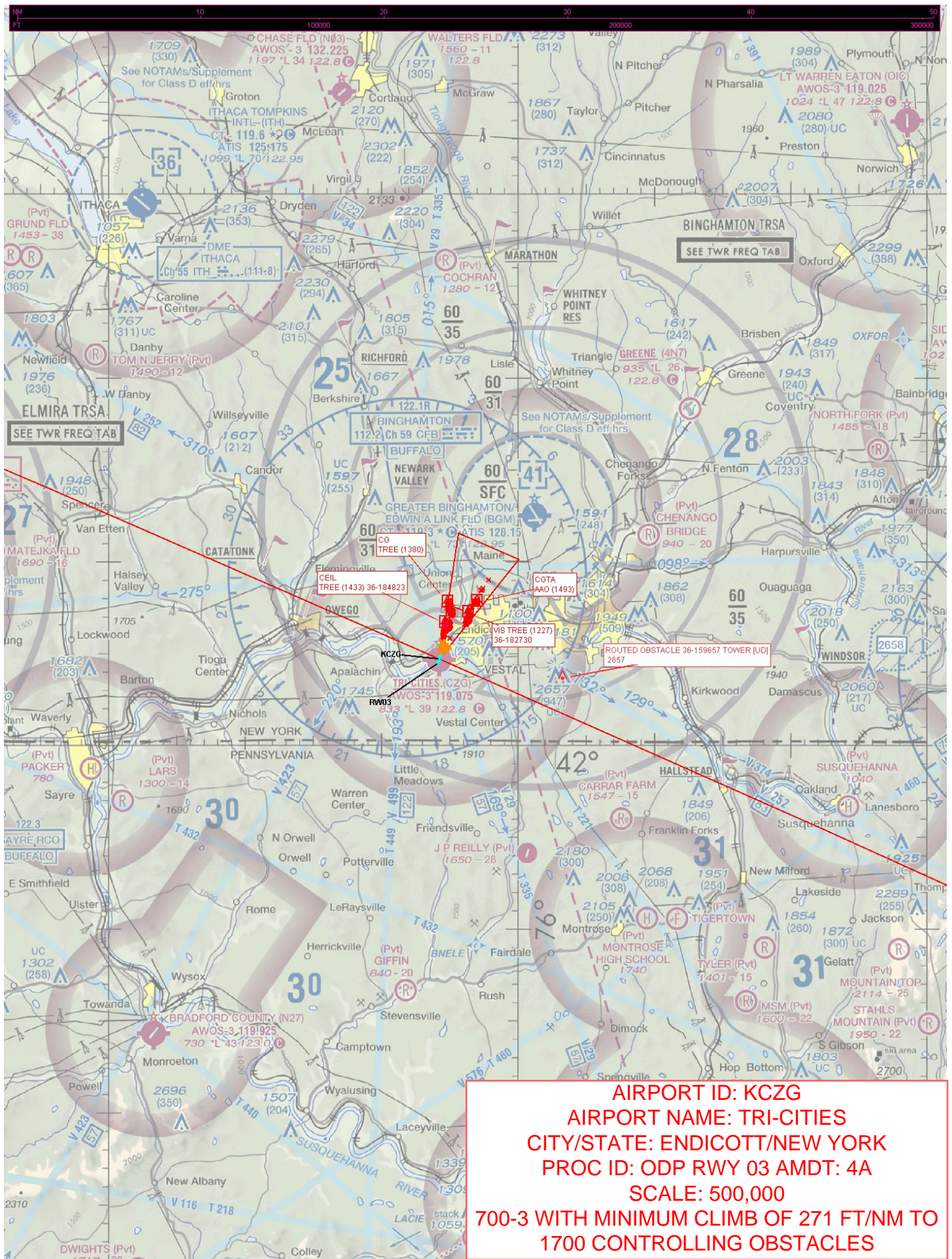
AMDT 2 03DEC98 (21196) (FAA)

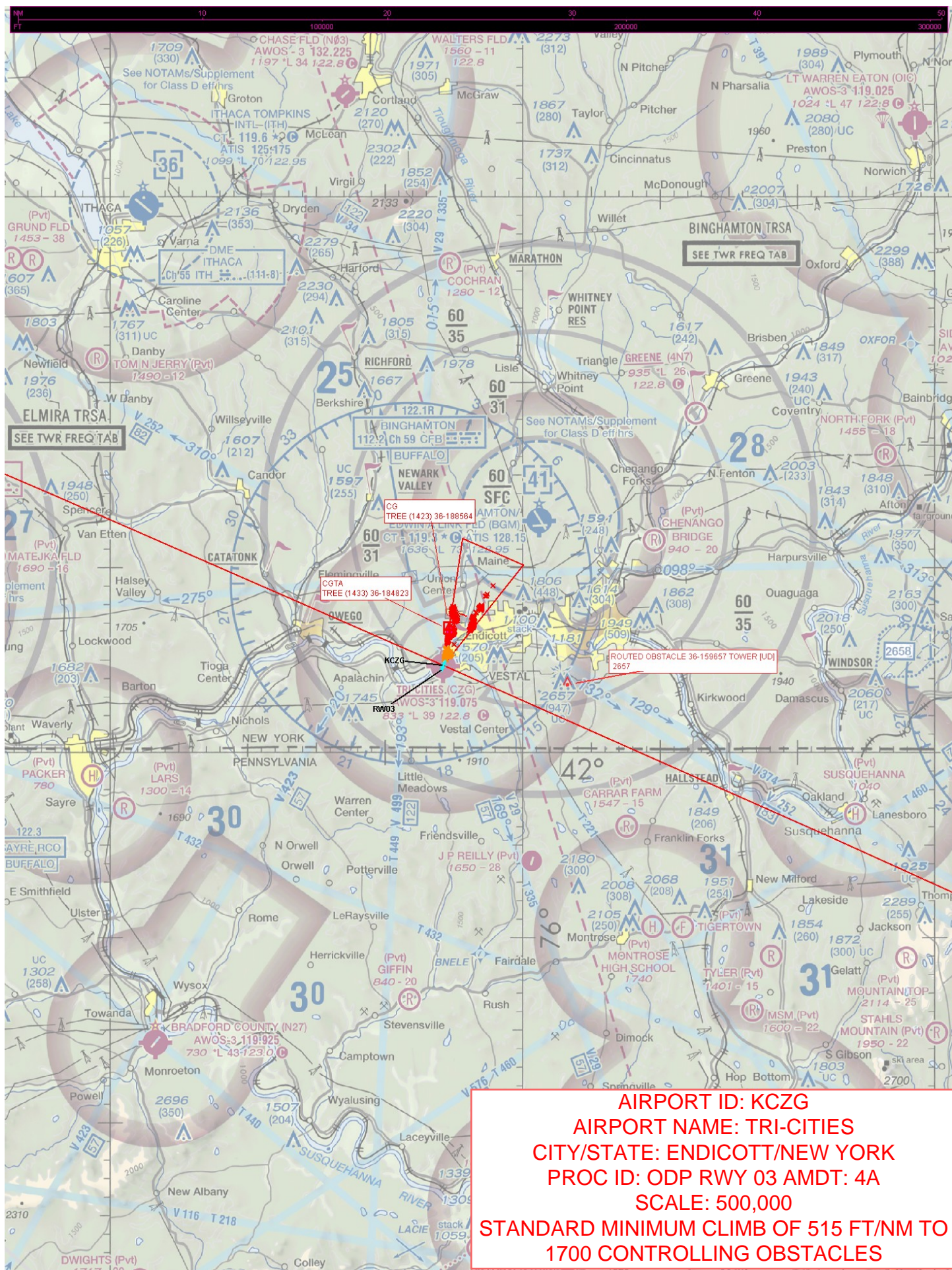
TAKEOFF MINIMUMS:

Rwy 7, 300-1 or std. w/min. climb of 300' per NM to 300.

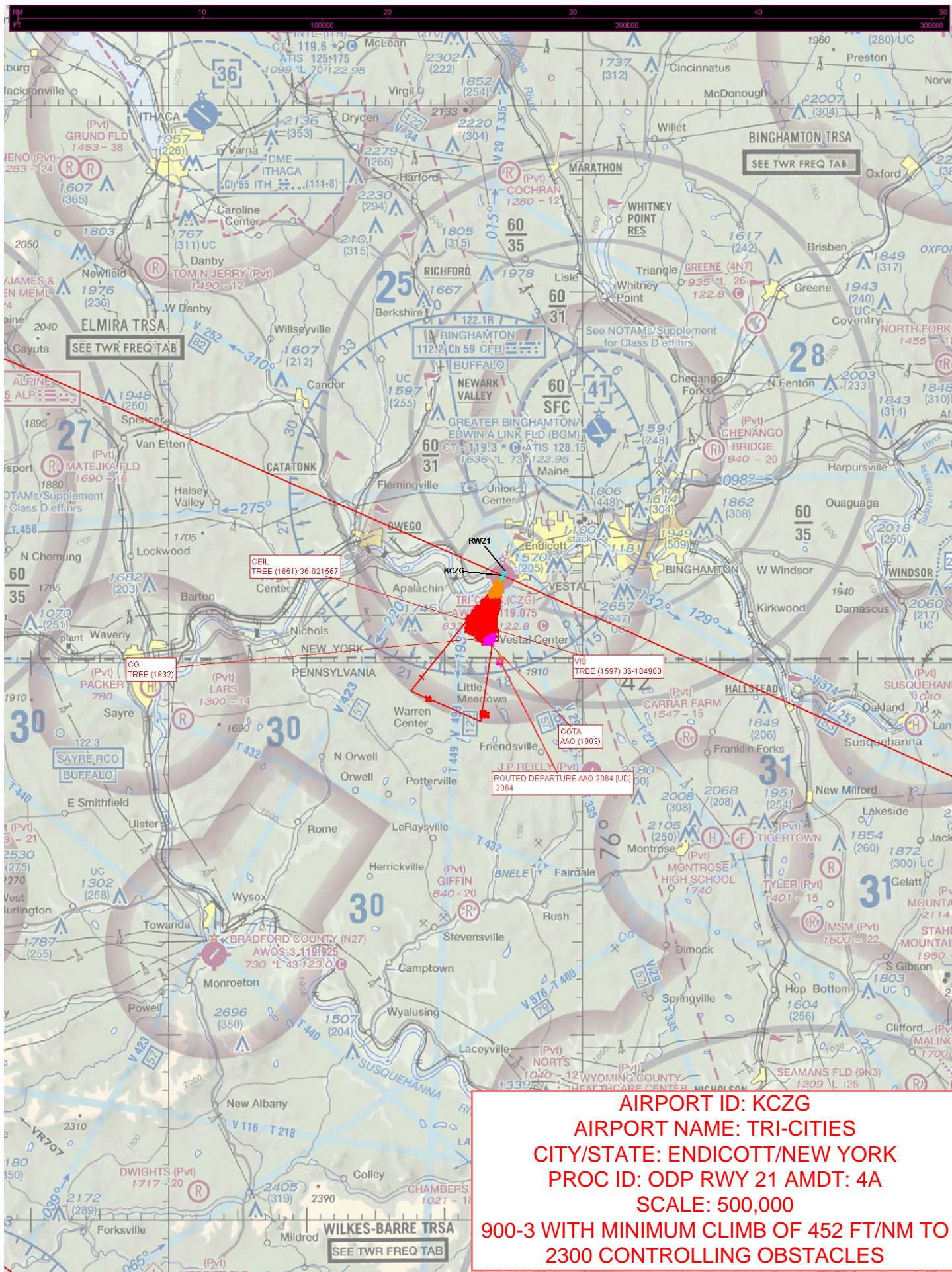
TAKEOFF OBSTACLE NOTES:

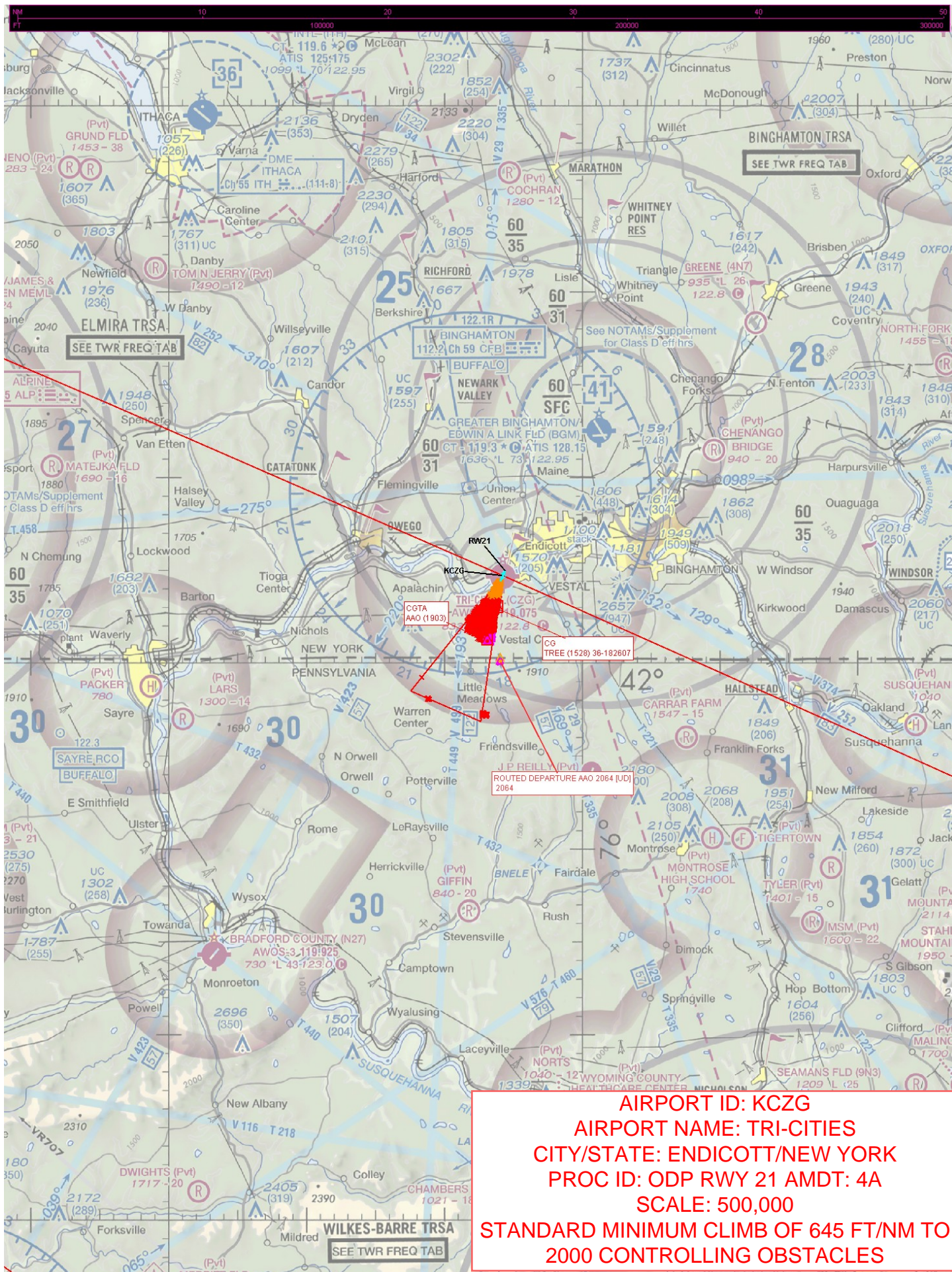
Rwy 7, 15' AGL bunker 25' from DER, right of centerline.

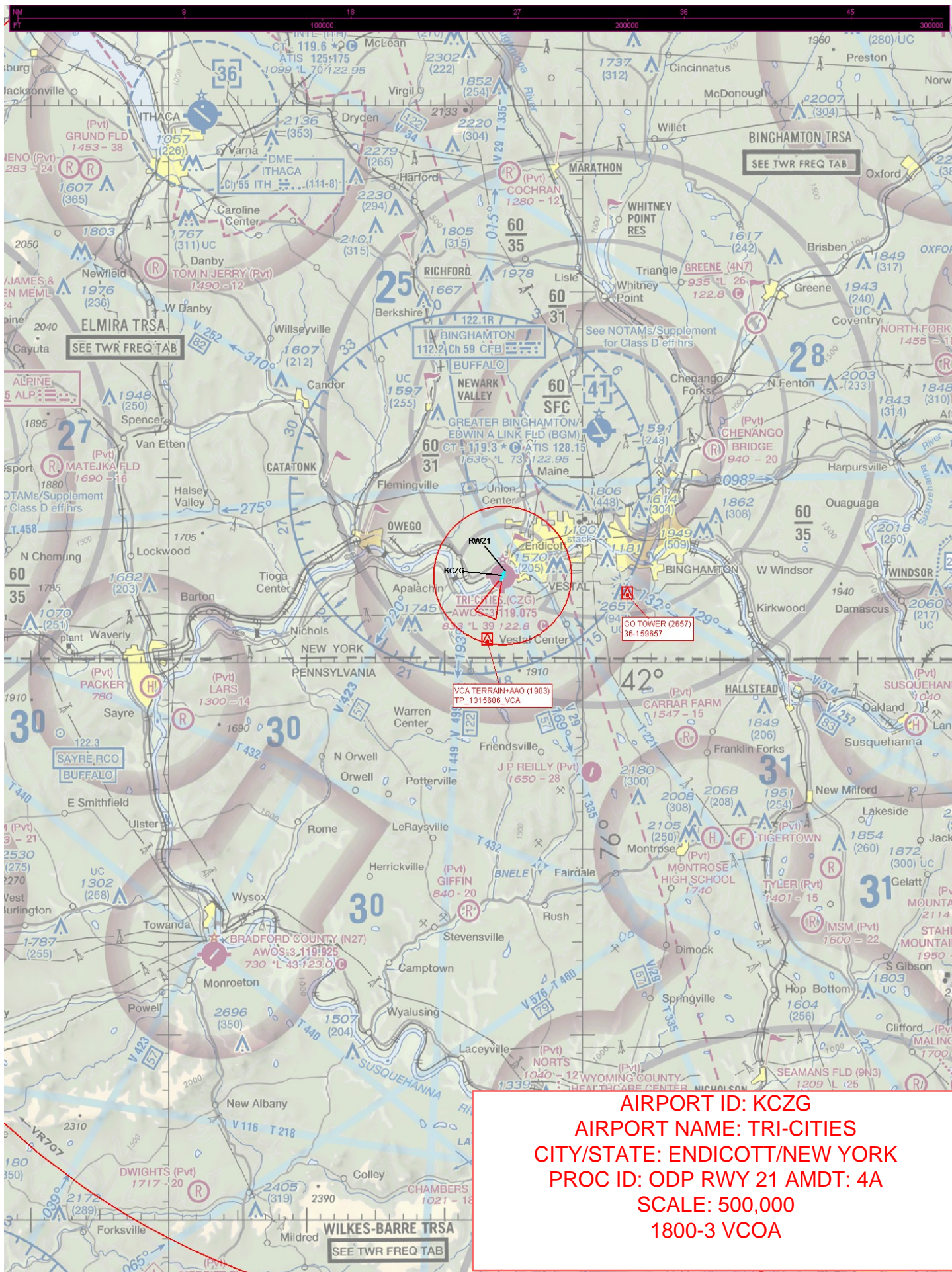


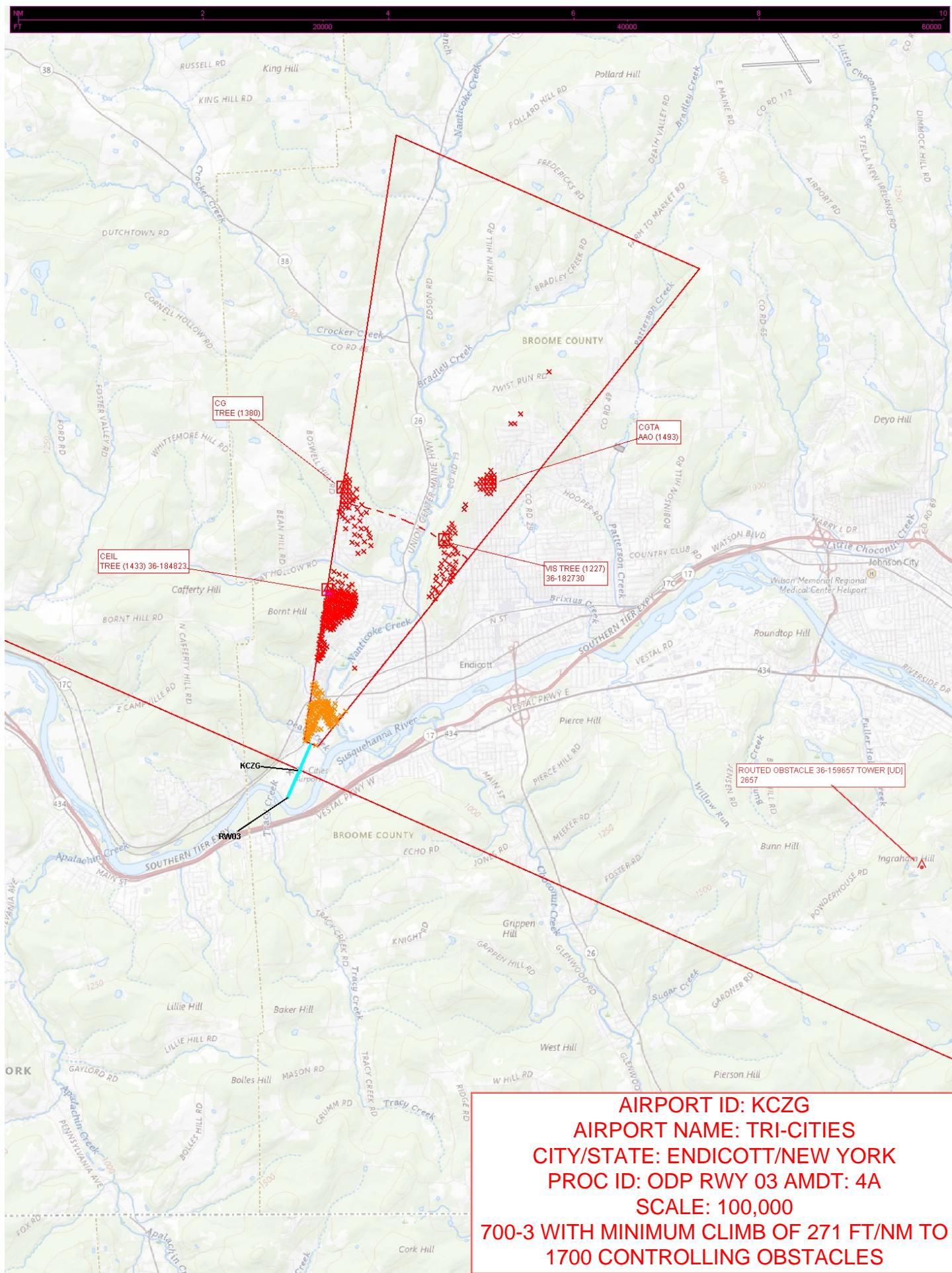


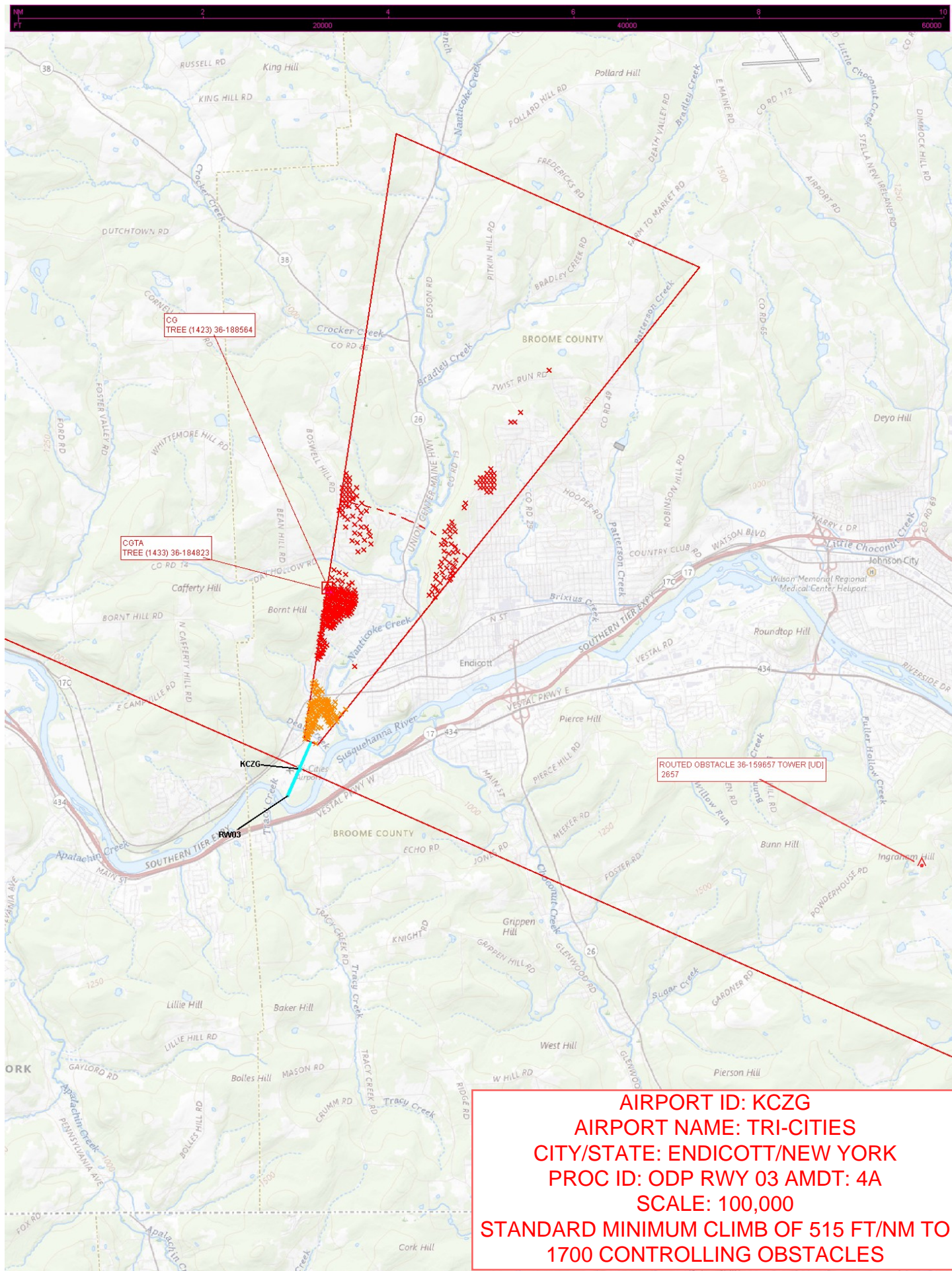


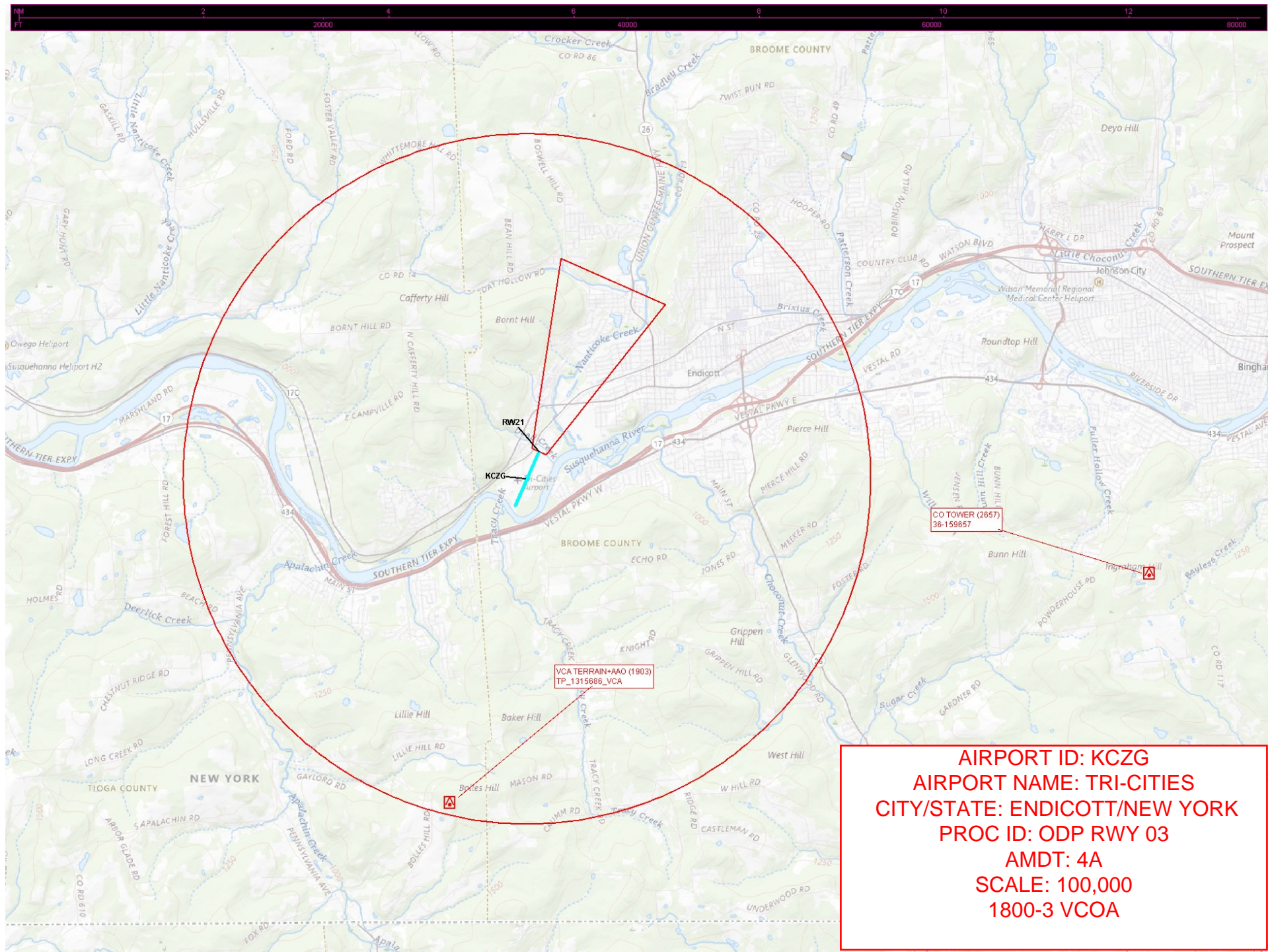


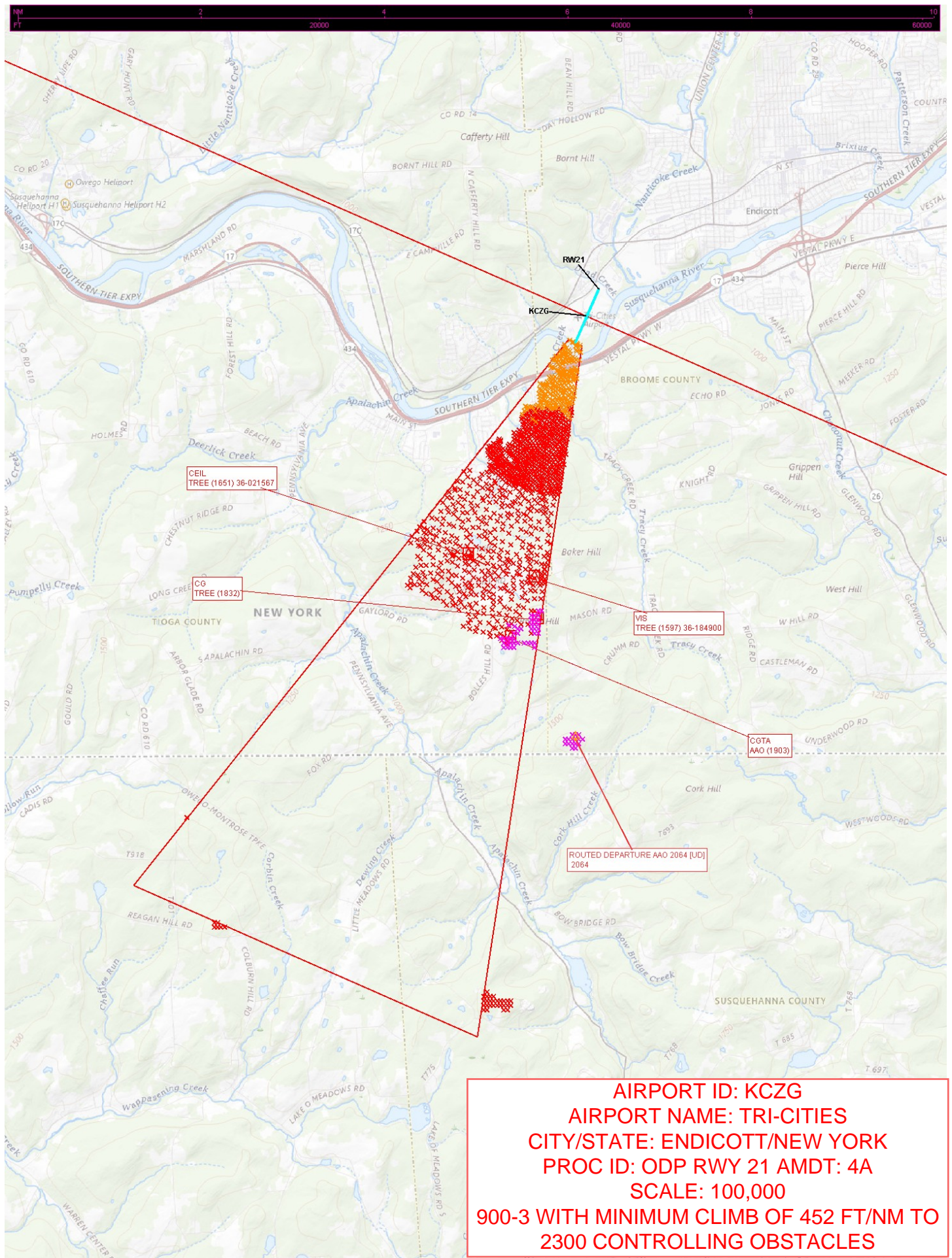


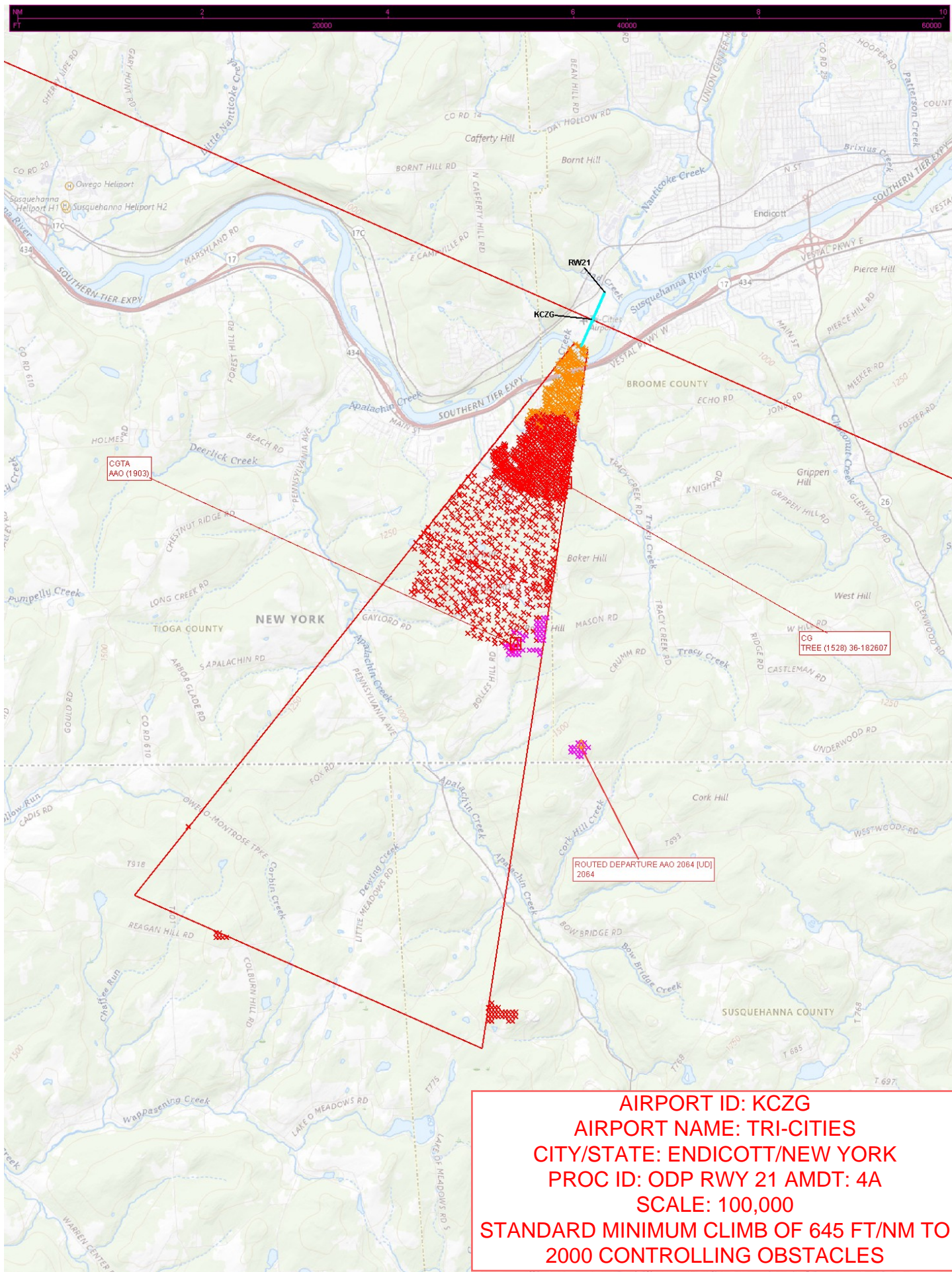


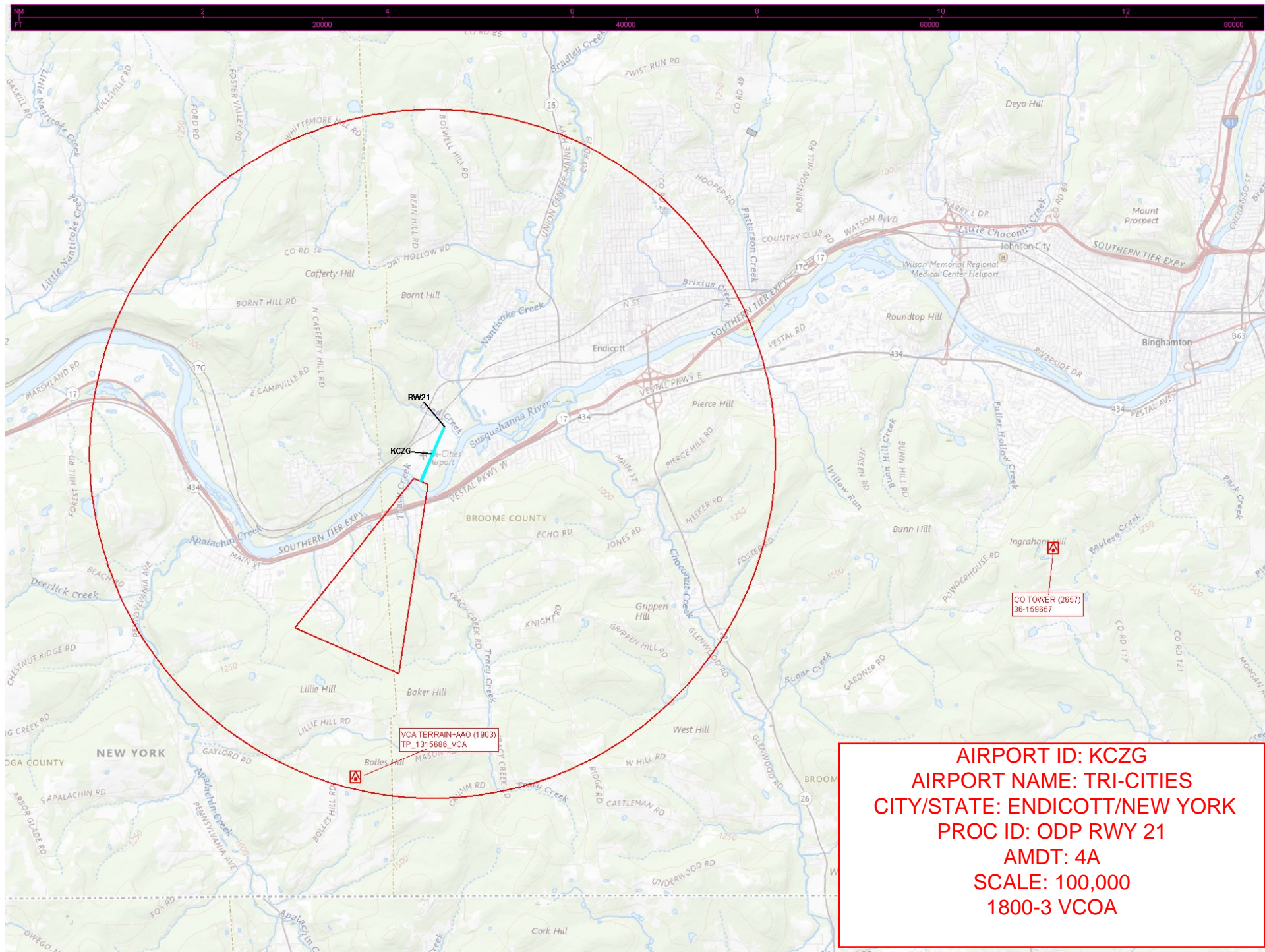












AIRPORT ID: KCZG
AIRPORT NAME: TRI-CITIES
CITY/STATE: ENDICOTT/NEW YORK
PROC ID: ODP RWY 21
AMDT: 4A
SCALE: 100,000
1800-3 VCOA