

Flight Procedures Cover Page	Task Action: P-NOTAM	Task Type: IAP	Estimated Chart Date: 10/05/2023	APWS Task ID: 19E17ED868FA4B7C9E3A1132C88C6973	APWS Project ID: D22C924913F649358EFD32C51F747568
Procedure: RNAV (GPS) RWY 35 AMDT 0B		Enroute: NO	Specialist: Garrity, Michael		Agreement Number:
Airport ID: PANV			Airport City: ANVIK		State: AK
Facility ID:	Facility Type:	Flight Inspection Remark Type:			

Procedure Comments:
T-NOTAM TO P-NOTAM PROJECT.

CANCELS !FDC 2/1758.

PROCESSED IAW TECHNICAL SUPPORT GROUP (AJF-17) MEMO DATED 07/07/21, SUBJECT,
GUIDANCE FOR PROCEDURAL CHANGES REQUIRING FLIGHT INSPECTION/VALIDATION.

CONTACT: ALLAN WILL, TEAM 2 SUBTEAM-C MANAGER, 405.954.6103.

05/26/2023

QUALITY
14
CHECKED

QUALITY
38
CHECKED

APP CRS	Rwy Idg	4000
351°	TDZE	290
	Apt Elev	309

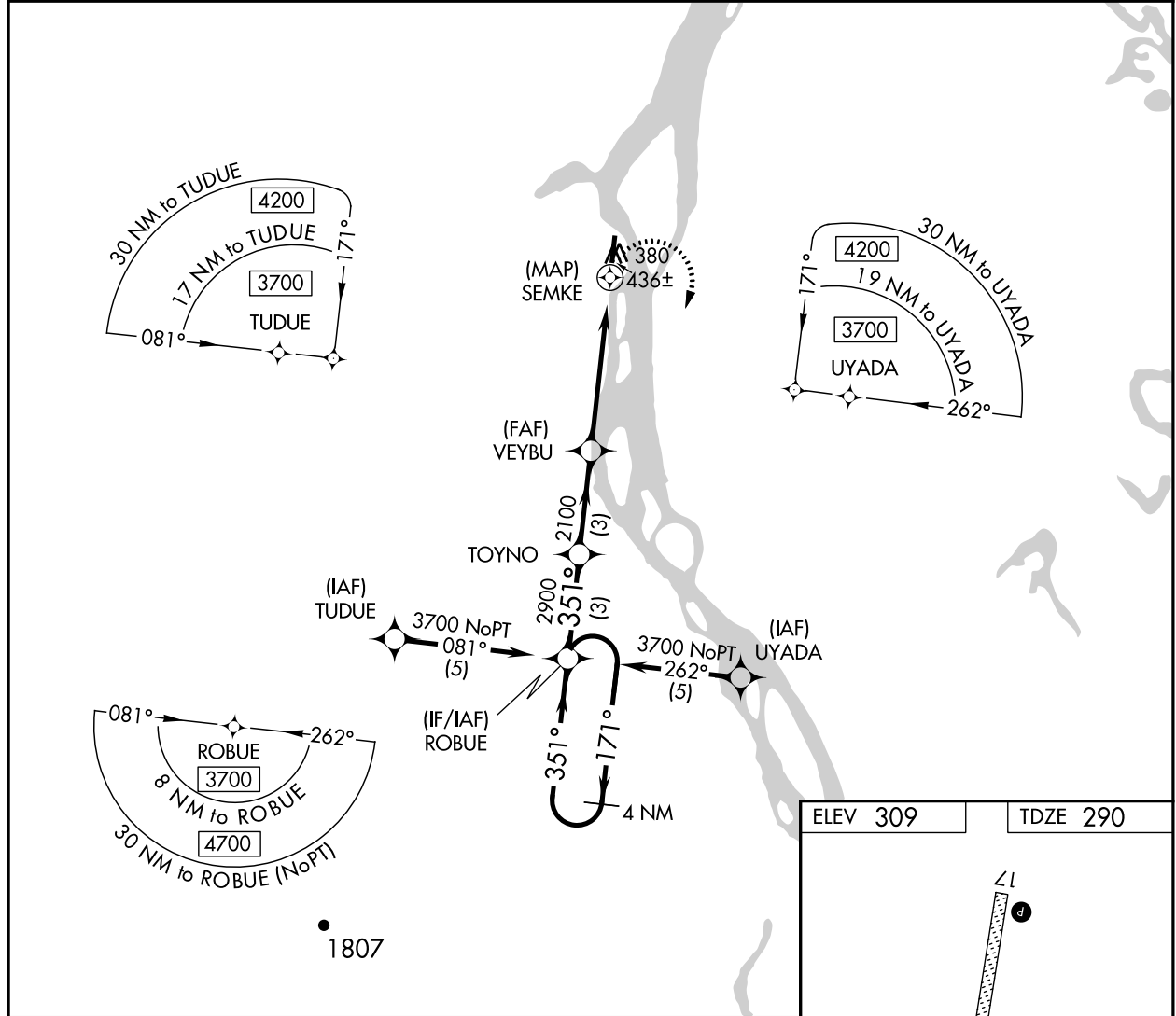
RNAV (GPS) RWY 35

ANVIK (ANV)(PANV)

⚠ DME/DME RNP-0.3 NA. When local altimeter setting not received, use Holy Cross altimeter setting and increase all MDAs 120 feet and LNAV visibility Cat C/D 3/8 mile, and Circling visibility Cat D 1/2 mile.

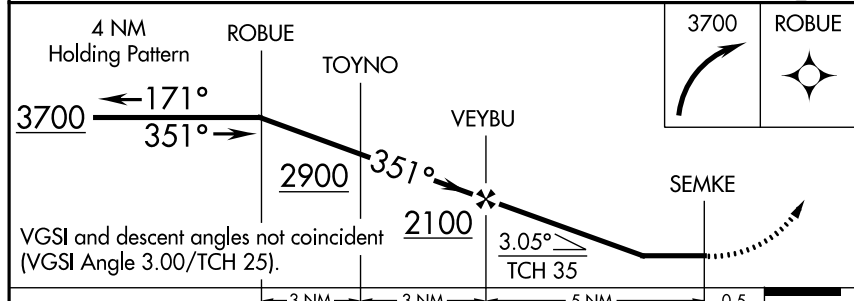
MISSED APPROACH: Climbing right turn to 3700 direct ROBUE and hold, continue climb-in-hold to 3700.

AWOS-3P 133.55	ANCHORAGE CENTER 135.7 335.5	KENAI RADIO 122.4	UNICOM 122.7 (CTAF)
--------------------------	--	-----------------------------	-------------------------------



AK, 20 APR 2023 to 15 JUN 2023

AK, 20 APR 2023 to 15 JUN 2023



CATEGORY	A	B	C	D
LNAV MDA	780-1 490 (500-1)		780-1 3/8 490 (500-1 3/8)	
CIRCLING	840-1 543 (600-1)		840-1 1/2 543 (600-1 1/2)	860-2 563 (600-2)

ELEV 309	TDZE 290
----------	----------

MIRL Rwy 17-35 **Ⓛ**
REIL Rwys 17 and 35 **Ⓛ**