



Flight Procedures Cover Page	Task Action: FLIGHT CHECK	Task Type: IAP	Estimated Chart Date: 04/17/2025	APWS Task ID: 1A36CFCFA8134BD099AC916AD2016F0F	APWS Project ID: FE893EAE0E5A4477BF73A9B9B5F98BE4
Procedure: RNAV (GPS) RWY 21 AMDT 2		Enroute: NO	Specialist: Fresella, David		Agreement Number:
Airport ID: KBKV			Airport City: BROOKSVILLE		State: FL
Facility ID:	Facility Type:	Flight Inspection Remark Type: New FC Slot			
<p>Procedure Comments: PENDING AIRPORT AND RWY DATA USED. APCH END OF RWY 21 MOVED 815 FT SW. CANCELS FDC NOTAM 3/8563. CONTACT DAVID DANNER, AJV-A421, 405-954-5077.</p>					
				 	

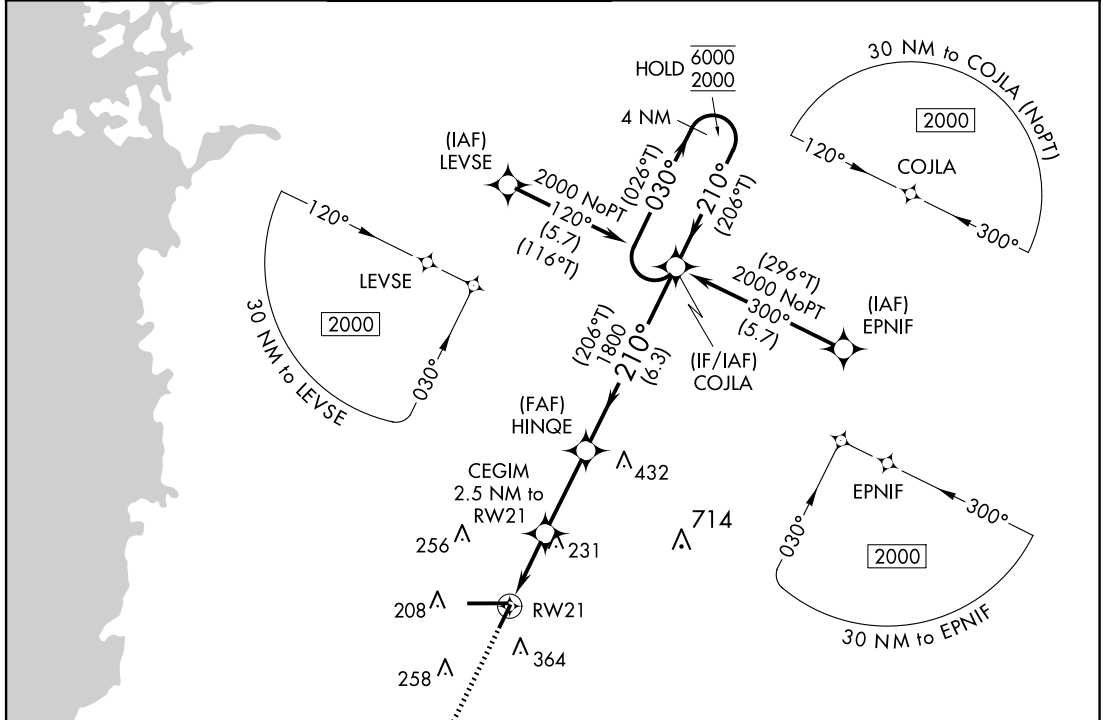
APP CRS	Rwy Idg	4200
210°	TDZE	69
	Apt Elev	76

RNAV (GPS) RWY 21

BROOKSVILLE-TAMPA BAY RGNL (BKV)

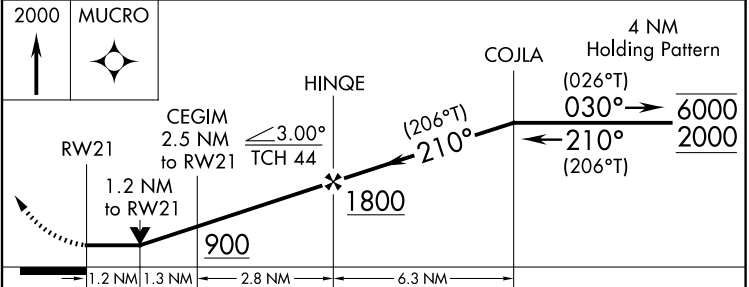
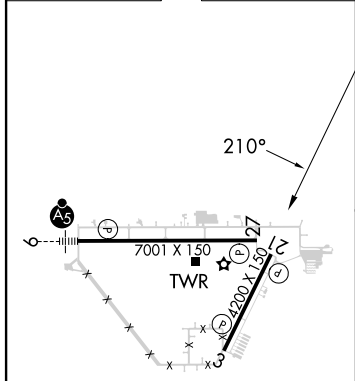
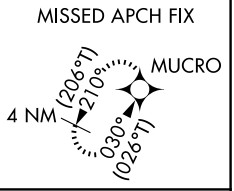
RNP APCH - GPS.		MISSED APPROACH: Climb to 2000 direct MUCRO and hold.			
<p>▼ Rwy 21 helicopter visibility reduction below 3/4 SM NA.</p> <p>▲</p>					

ASOS	TAMPA APP CON	BROOKSVILLE TOWER ★	GND CON	CLNC DEL	UNICOM
134.725	125.3 316.05	118.55 (CTAF) 0	121.4	119.125 (When twr closed)	123.0



ELEV	76	TDZE	69
------	----	------	----

PROTOTYPE: NOT FOR NAVIGATION



CATEGORY	A	B	C	D
LNAV MDA	500-1	431 (500-1)	500-1 1/4	431 (500-1 1/4)

MIRL Rwy 3-21 and 9-27

AUTOMATED AL-6210 RNAV (GPS) RWY 21

SE-3
30 DEC 2024
COMPILER: BB
REVIEWER:
DBL CHKR:
EFF DATE: FIG

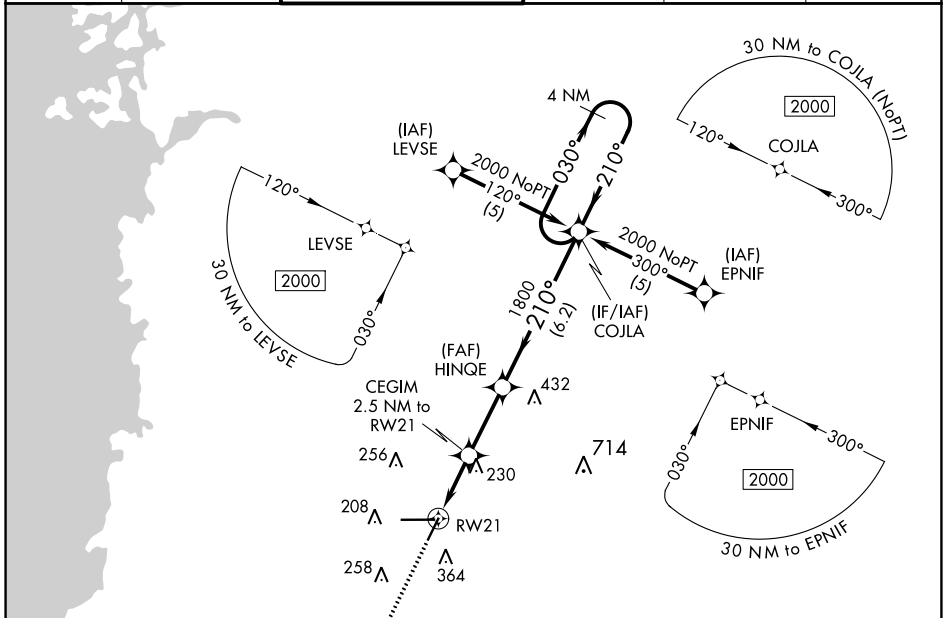
APP CRS	Rwy Idg	5014
210°	TDZE	69
	Apt Elev	76

OLD

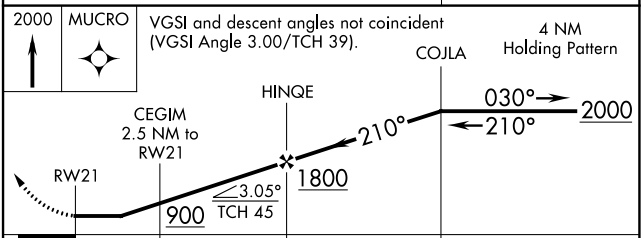
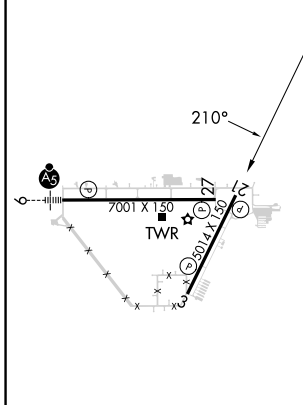
RNAV (GPS) RWY 21
BROOKSVILLE-TAMPA BAY RGNL (BKV)

RNP APCH.		MISSED APPROACH: Climb to 2000 direct MUCRO and hold.			
<p>▼ When local altimeter setting not received, use Tampa Intl altimeter setting and increase all MDA 80 feet and increase LNAV Cat C and Circling Cats C and D visibility ¼ mile.</p>					

ASOS 134.725	TAMPA APP CON 125.3 316.05	BROOKSVILLE TOWER ★ 118.55 (CTAF) 0	GND CON 121.4	CLNC DEL 119.125 (When twr closed)	UNICOM 123.0
------------------------	--------------------------------------	---	-------------------------	---	------------------------



ELEV 76	TDZE 69
---------	---------



CATEGORY	A	B	C	D
LNAV MDA	500-1	431 (500-1)	500-1¼ 431 (500-1¼)	500-1½ 431 (500-1½)

SE-3, 03 OCT 2024 to 31 OCT 2024

SE-3, 03 OCT 2024 to 31 OCT 2024



TAA Straight-In 120 CW 300
TOWER (617) 12-004177

BROOKSVILLE-TAMPA BAY RGNL (KBKV)
BROOKSVILLE, FL
RNAV (GPS) RWY 21, AMDT 2
1:500,000
TAA Straight-In

BROOKSVILLE-TAMPA BAY RGNL (KBKV)
BROOKSVILLE, FL
RNAV (GPS) RWY 21, AMDT 2
1:550,000
TAA Left & Right Base

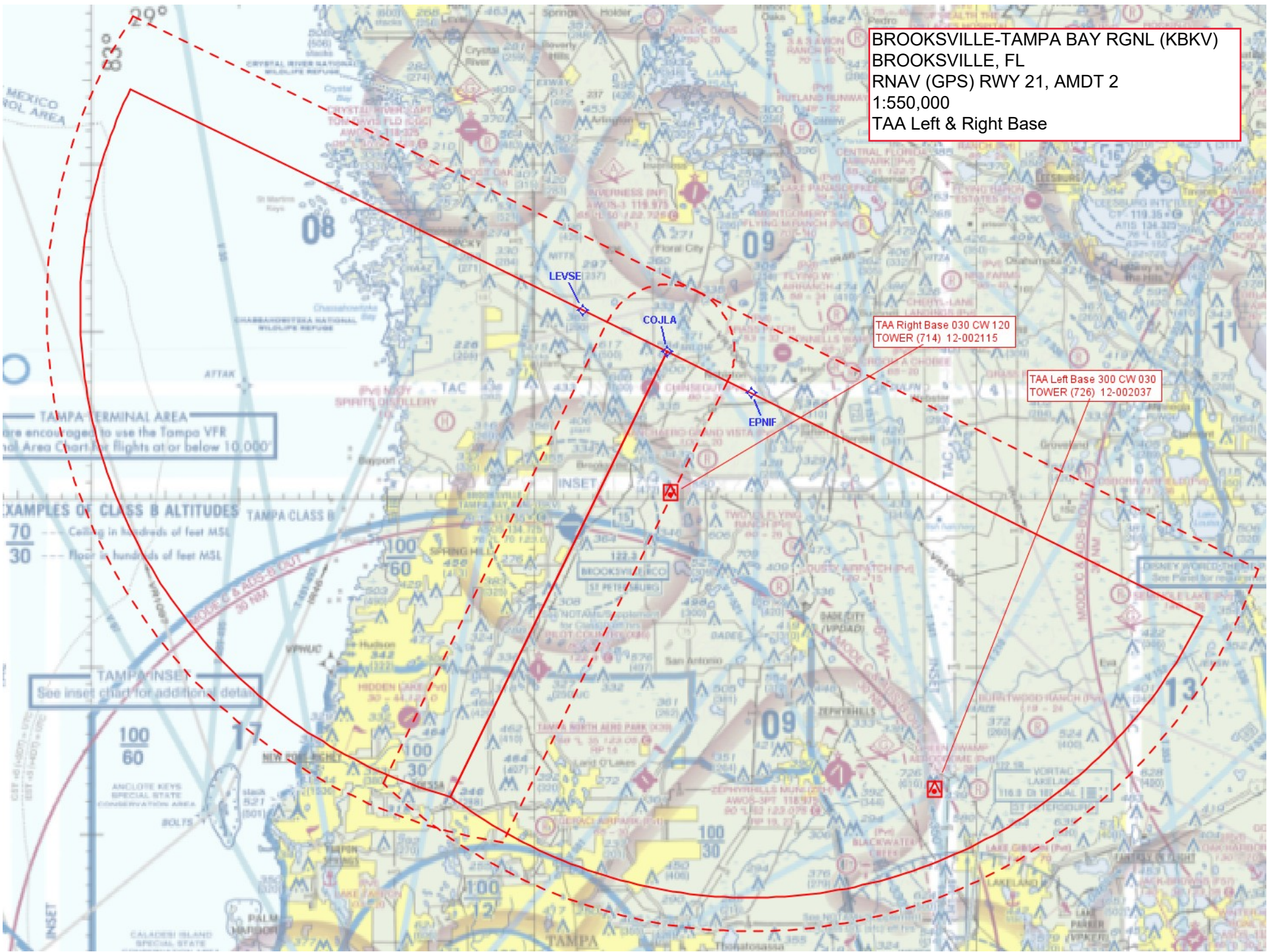
TAMPA TERMINAL AREA
Pilot enroute to use the Tampa VFR Terminal Area Chart for flights at or below 10,000'

EXAMPLES OF CLASS B ALTITUDES
70 --- Ceiling in hundreds of feet MSL
30 --- Floor in hundreds of feet MSL

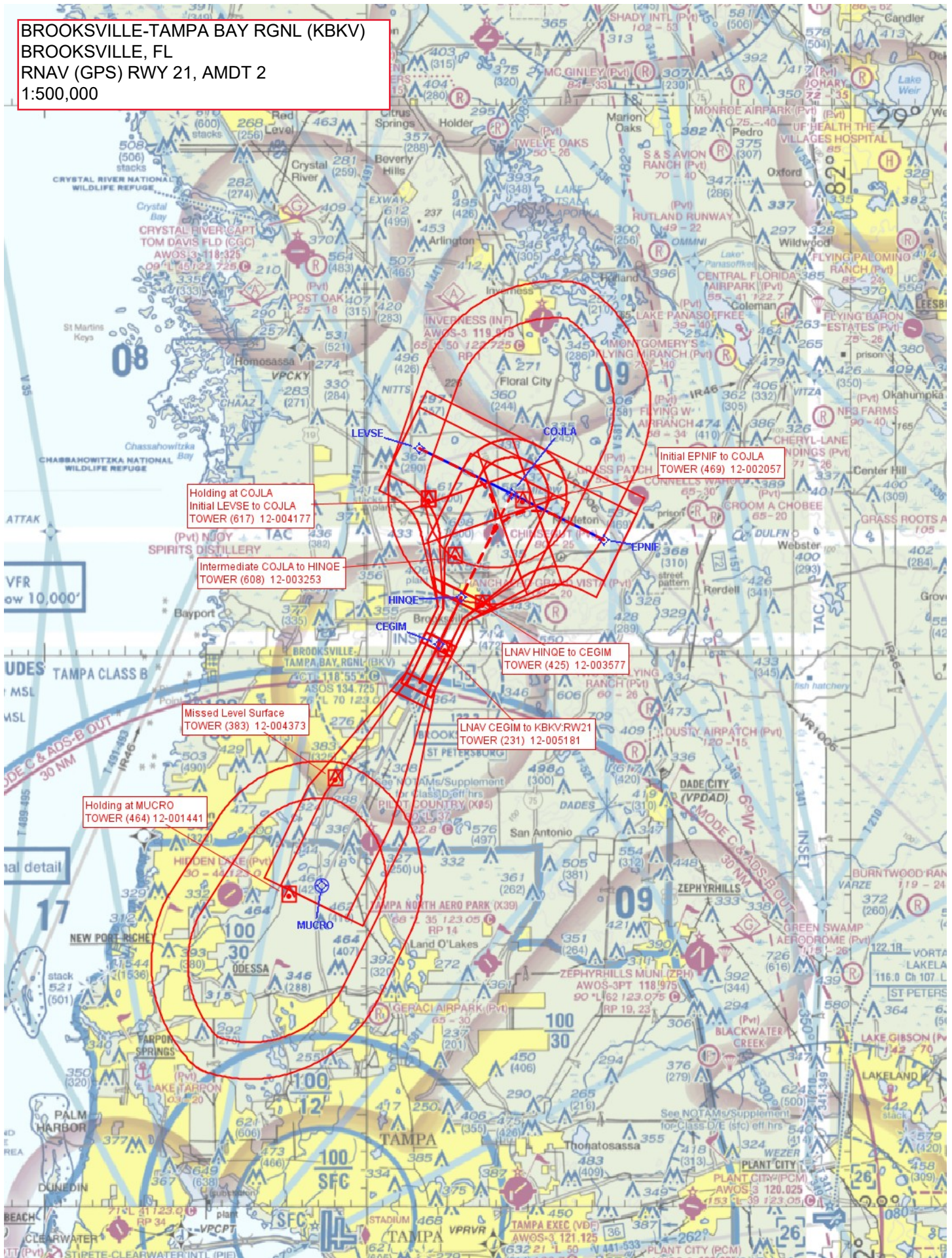
TAMPA INSET
See inset chart for additional details

100
60
ANGLERS KEYS
SPECIAL STATE
CONSERVATION AREA

INSET
CALADESI ISLAND
SPECIAL STATE



BROOKSVILLE-TAMPA BAY RGNL (KBKV)
BROOKSVILLE, FL
RNAV (GPS) RWY 21, AMDT 2
1:500,000



**BROOKSVILLE-TAMPA BAY RGNL (KBKV)
BROOKSVILLE, FL
RNAV (GPS) RWY 21, AMDT 2
1:100,000
LNAV Final**

