

Flight Procedures Cover Page	Task Action: P-NOTAM	Task Type: IAP	Estimated Chart Date: 09/03/2026	APWS Task ID: 1CEAEAB6EE1E4EBCA7CB7E743CBEFF7C	APWS Project ID: BBB8A65702B34888994F9B4AF36D1D27
Procedure: RNAV (GPS) RWY 35 AMDT 2C		Enroute: NO	Specialist: Johnson, Timothy		Agreement Number:
Airport ID: KLBX			Airport City: ANGLETON/LAKE JACKSON		State: TX
Facility ID:	Facility Type:	Flight Inspection Remark Type:			

**Procedure Comments:**

Visibility Initiative (Garmin) - Update IAP visibility minimums IAW Order 8260.3, Chapter 3, Section 3-3. Visibility Minimums.

PROCESSED IAW TECHNICAL SUPPORT GROUP (AJF-17) MEMO DATED 07/07/2021, SUBJECT: GUIDANCE FOR PROCEDURAL CHANGES REQUIRING FLIGHT INSPECTION/VALIDATION.

CONTACT: CASEY HILL (405) 954-0624.



OLD

ANGLETON/LAKE JACKSON, TEXAS

AL-6453 (FAA)

25219

WAAS CH <b>77516</b> <b>W35A</b>	APP CRS <b>355°</b>	Rwy Ldg <b>7000</b> TDZE <b>25</b> Apt Elev <b>25</b>
--	------------------------	---

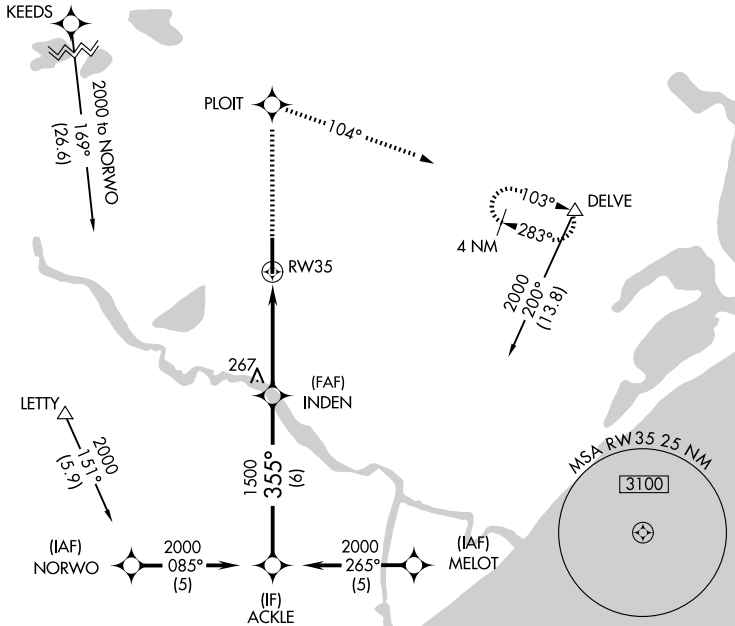
# RNAV (GPS) RWY 35

TEXAS GULF COAST RGNL (L.B.X)

**⚠** DME/DME RNP-0.3 NA. Baro-VNAV NA below -16°C (4°F). When local altimeter setting not received, use William P. Hobby altimeter setting and increase all DAs/MDAs 100 feet and Circling Cat D visibility ¼ SM. Baro-VNAV and VDP NA when using William P. Hobby altimeter setting. Circling NA east of Rwy 17-35.

**MISSED APPROACH:** Climb to 2000 direct PLOIT and right turn via 104° track to DELVE and hold.

ASOS <b>119.925</b>	HOUSTON APP CON <b>134.45 284.0</b>	CLNC DEL <b>125.2</b>	UNICOM <b>123.0 (CTAF) 0</b>
------------------------	--	--------------------------	---------------------------------

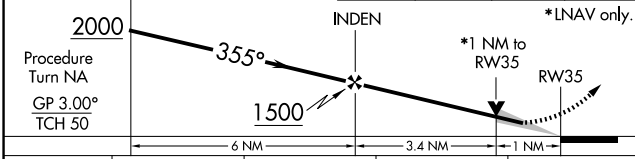


SC-5, 19 MAR 2026 to 16 APR 2026

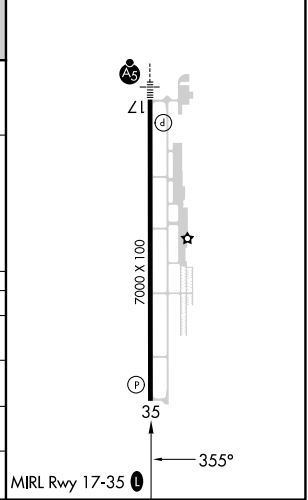
SC-5, 19 MAR 2026 to 16 APR 2026

ELEV 25	<b>D</b>	TDZE 25
---------	----------	---------

VGSI and RNAV glidepath not coincident (VGSI Angle 3.00/TCH 40).  
 ACKLE      2000      PLOIT      DELVE  
 Procedure Turn NA      tr 104°  
 GP 3.00°  
 TCH 50



CATEGORY	A	B	C	D
LPV DA		275-¾	250 (300-¾)	
LNAV/VNAV DA		428-1½	403 (500-1½)	
LNAV MDA		420-1	395 (400-1)	420-1¼ 395 (400-1¼)
CIRCLING	480-1½ 455 (500-1½)	500-1½	475 (500-1½)	620-2 595 (600-2)



ANGLETON/LAKE JACKSON, TEXAS  
 Amdt 2B 26MAR20

29°07'N-95°28'W

# TEXAS GULF COAST RGNL (L.B.X) RNAV (GPS) RWY 35