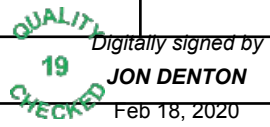


Flight Procedures Cover Page	Task Action: FLIGHT CHECK	Task Type: IAP	Estimated Chart Date: 05/21/2020	APWS Task ID: 1D923FD8920F4D0D841895F747C40C69	APWS Request ID: 852B166457314DD0AB8DD8600DBC959D
Procedure: VOR RWY 14 AMDT 8		Enroute: NO	Specialist: Maxfield, Jacob		Agreement Number:
Airport ID: KOFK	Airport Name: NORFOLK RGNL/KARL STEFAN MEMORIAL FLD		Airport City: NORFOLK		State: NE
Facility ID:	Facility Type:	Flight Inspection Remark Type: New FC Slot			
<div style="text-align: right;">  </div> <p>Procedure Comments: PENDING DATA USED FOR KOFK AIRPORT AND RUNWAYS PENDING DATA USED FOR OFK VOR/DME CONTACT: GEORGE DAVIS 405-954-9960 OR DON LANIER 405-954-8242</p>					

FIPC BASIC FORM								
PROCEDURE: VOR RWY 14 AMDT 8			AIRPORT NAME: NORFOLK RGNL/KARL STEFAN		AIRPORT ID: KOFK	SPECIAL CONTROL NO: BP-06-055-20		
FAC ID: OFK		CITY: NORFOLK			ST: NE	ORIG CHART DATE: 09/10/2020		
DFL TYPE: PROC/A	THIRD PARTY: <input type="checkbox"/> YES	EST. TIME ON SITE: 0.4	REIMB. NUMBER:		PTS TASK ID:			
PREFLIGHT NOTES								
REVIEWER:					DATE:			
COMMENTS:					CHECK ONE: <input type="checkbox"/> FLT CK REQ <input type="checkbox"/> NFCR <input type="checkbox"/> REJECT			
							YES	NO
					CPV COMPLETE?		X	
PROCEDURE RESULTS								
INSPECTION DATE: 06/17/2020		CREW #: VN409	N #: N71	INSTRUMENT PROCEDURE STATUS: <input checked="" type="checkbox"/> SAT <input type="checkbox"/> SAT W/CHANGES <input type="checkbox"/> UNSAT		ARINC CODING: <input type="checkbox"/> SAT <input type="checkbox"/> SAT/GOLD <input type="checkbox"/> UNSAT		
FLIGHT INSPECTOR SIGNATURE: patrick murray @ 06/17/2020 17:29			PRINTED NAME: MURRAY, PATRICK MICHAEL			NOTAM INITIATED? <input type="checkbox"/> YES <input checked="" type="checkbox"/> NO		
FLIGHT INSPECTOR REMARKS: No coding was sresent in the CDU for this approach. PIC entered the radial and DME and cross checked the aircraft position for FEGUN. Norfolk Regional/Karl Stefan Memorial FLD, Norfolk, NE, VOR RWY 14, Amdt. 8, complete SAT.								
IN-FLIGHT OBSTACLE REPORT								
OBSTRUCTION ID #:	COORDINATES OR LOCATION:		GNSS ALTITUDE (MSL):		BAROMETRIC ALTITUDE (MSL):		HEIGHT ABOVE GROUND LEVEL:	

FIG

VOR RWY 14
NORFOLK RGNL/KARL STEFAN MEMORIAL FLD (OFK)

Rwy 14 helicopter visibility reduction below $\frac{3}{4}$ NA.

MISSED APPROACH: Climb to 3400, then right turn direct OFK VOR/DME and hold.

2704 Δ

Δ 2304

1726 Δ

1599

1809 ±

Δ 1891

Δ 2209

IAF
NORFOLK
109.6 OFK
Chan 33

(088°T)
080°

260°
(268°T)

(133°T)
125°

(313°T)
R-305

(313°T)
305°

3800

4800

090°

30°

MSA OFK 25 NM

PROTOTYPE-NOT FOR NAVIGATION

PROTOTYPE-NOT FOR NAVIGATION

Remain within 10 NM

3400

(133°T)

125°

2300

305°

(313°T)

FEGUN

2.7

300°

TCH 40

OFK

1.9

0.7 NM

1.5 NM

OFK VOR/DME

3400

OFK

125° to VOR/DME

1567

0.4% Up

5806 X 100

5807 X 100

0.2% Up

1569

1598

1613

1625

REIL Rwy 32

HIRL Rwy 2-20

MIRL Rwy 14-32

CATEGORY	A	B	C	D
S-14	2300-1 757 (800-1)	2300-1¼ 757 (800-1¼)	2300-2	757 (800-2)
CIRCLING	2300-1 727 (800-1)	2300-1¼ 727 (800-1¼)	2300-2 727 (800-1)	2360-2½ 787 (800-2½)

FEGUN FIX MINIMUMS (DME REQUIRED)

S-14	2060-1	517 (500-1)	2060-1⅓	517 (500-1⅓)
CIRCLING	2060-1 487 (500-1)	2100-1 527 (600-1)	2260-2 687 (700-1)	2360-2½ 787 (800-2½)

NORFOLK RGNL/KARL STEFAN MEMORIAL FLD (OFK)
41°59'N-97°26'W

AUTOMATED AL-974 VOR RWY 14

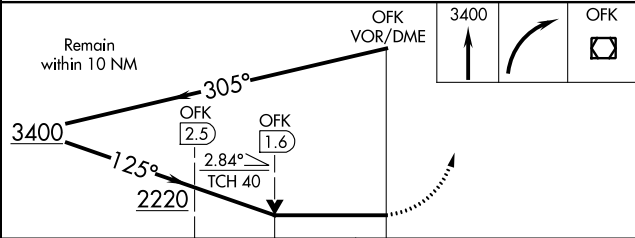
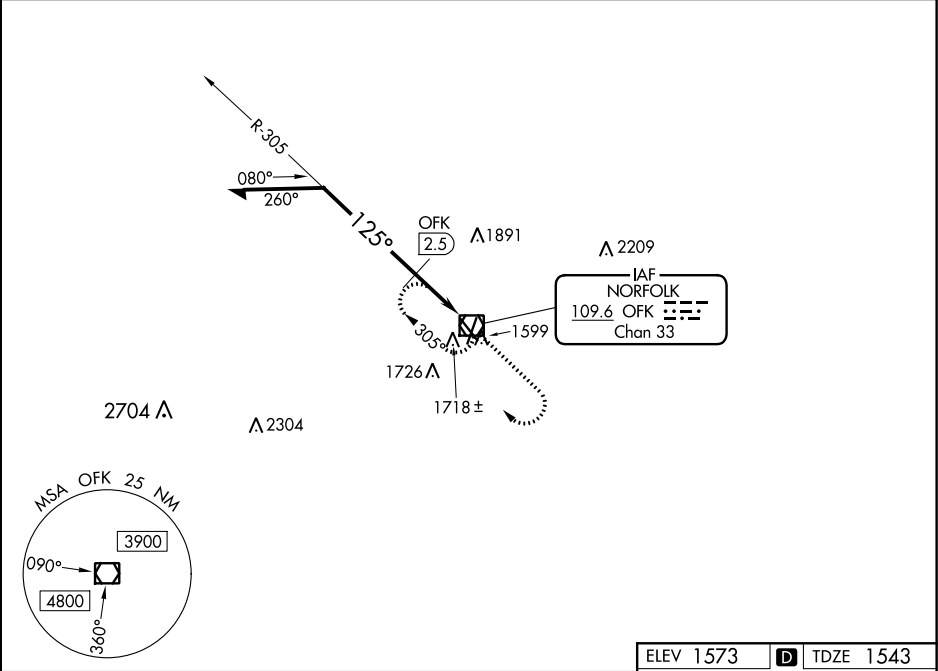
NC-2
2-12-20
COMPILER: HD
REVIEWER:
DBL CHKR:
EFF DATE: FIG

VOR/DME OFK 109.6 Chan 33	APP CRS 125°	Rwy Idg 5160 TDZE 1543 Apt Elev 1573
---	------------------------	---

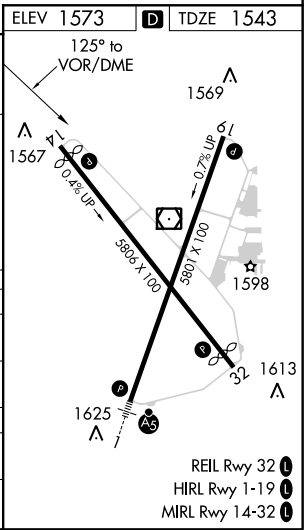
VOR RWY 14

NORFOLK RGNL/KARL STEFAN MEMORIAL FIELD (OFK)

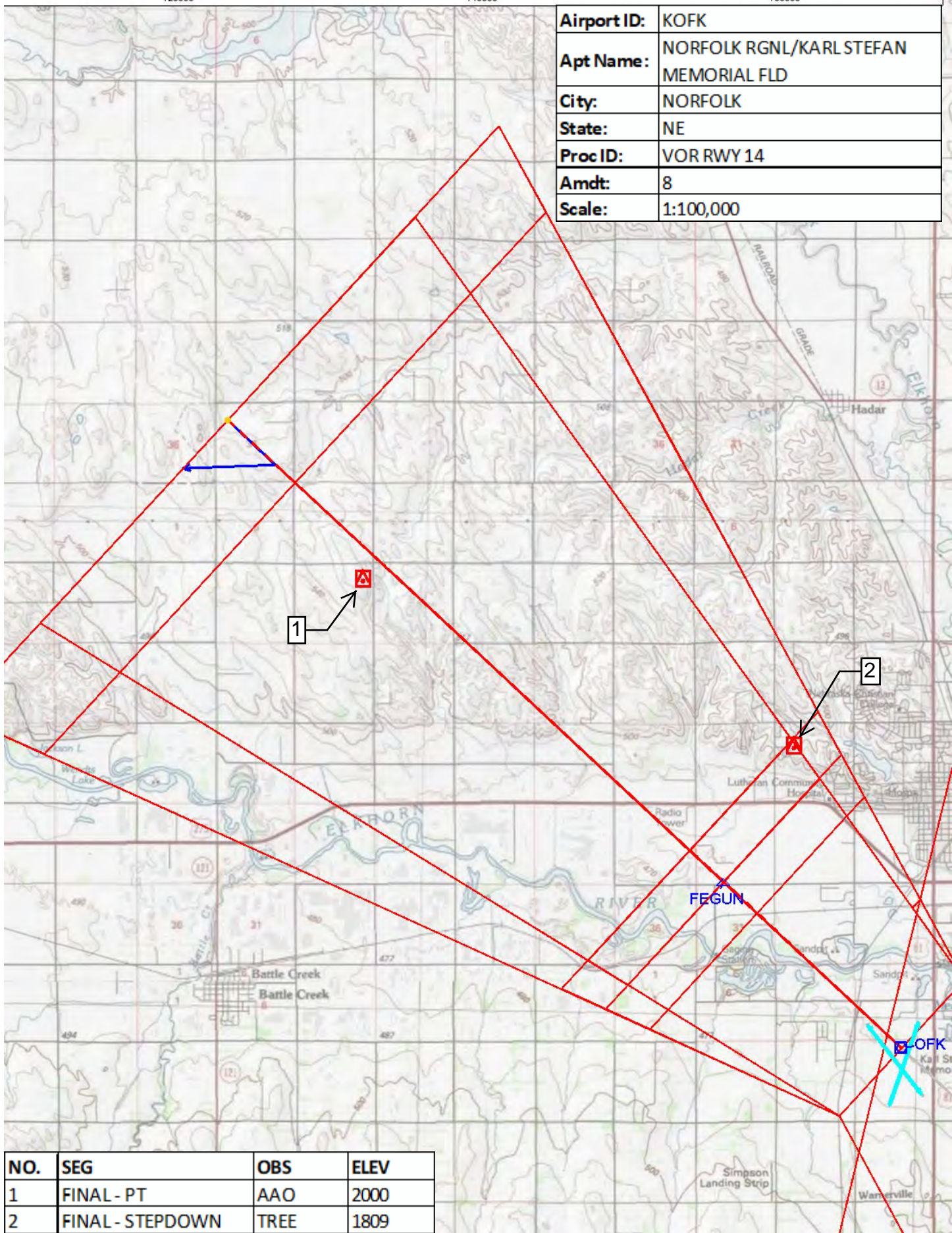
ASOS 119.025		MINNEAPOLIS CENTER 125.025 235.625	COLUMBUS RADIO 122.15	UNICOM 122.7 (CTAF)
------------------------	--	--	---------------------------------	-------------------------------

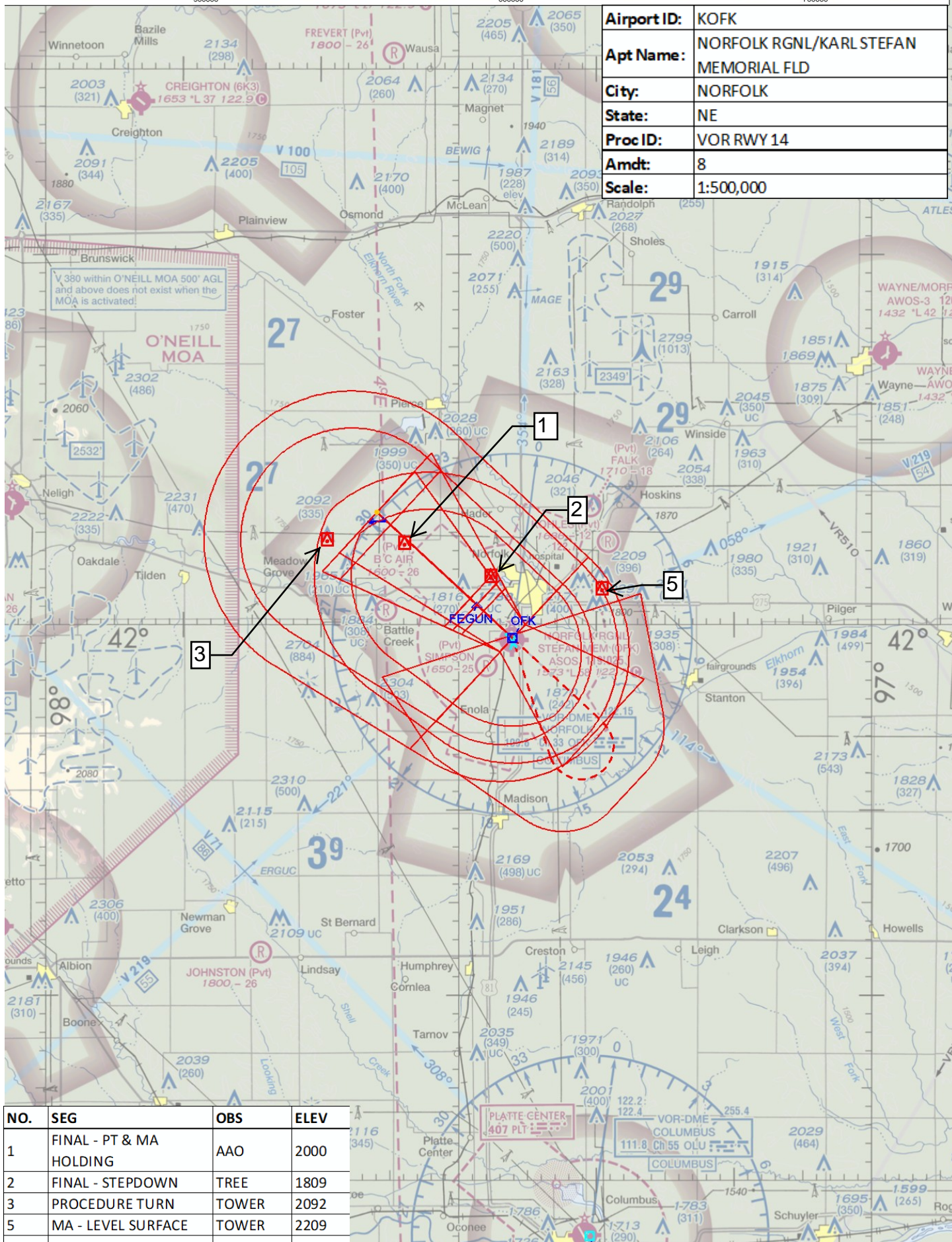


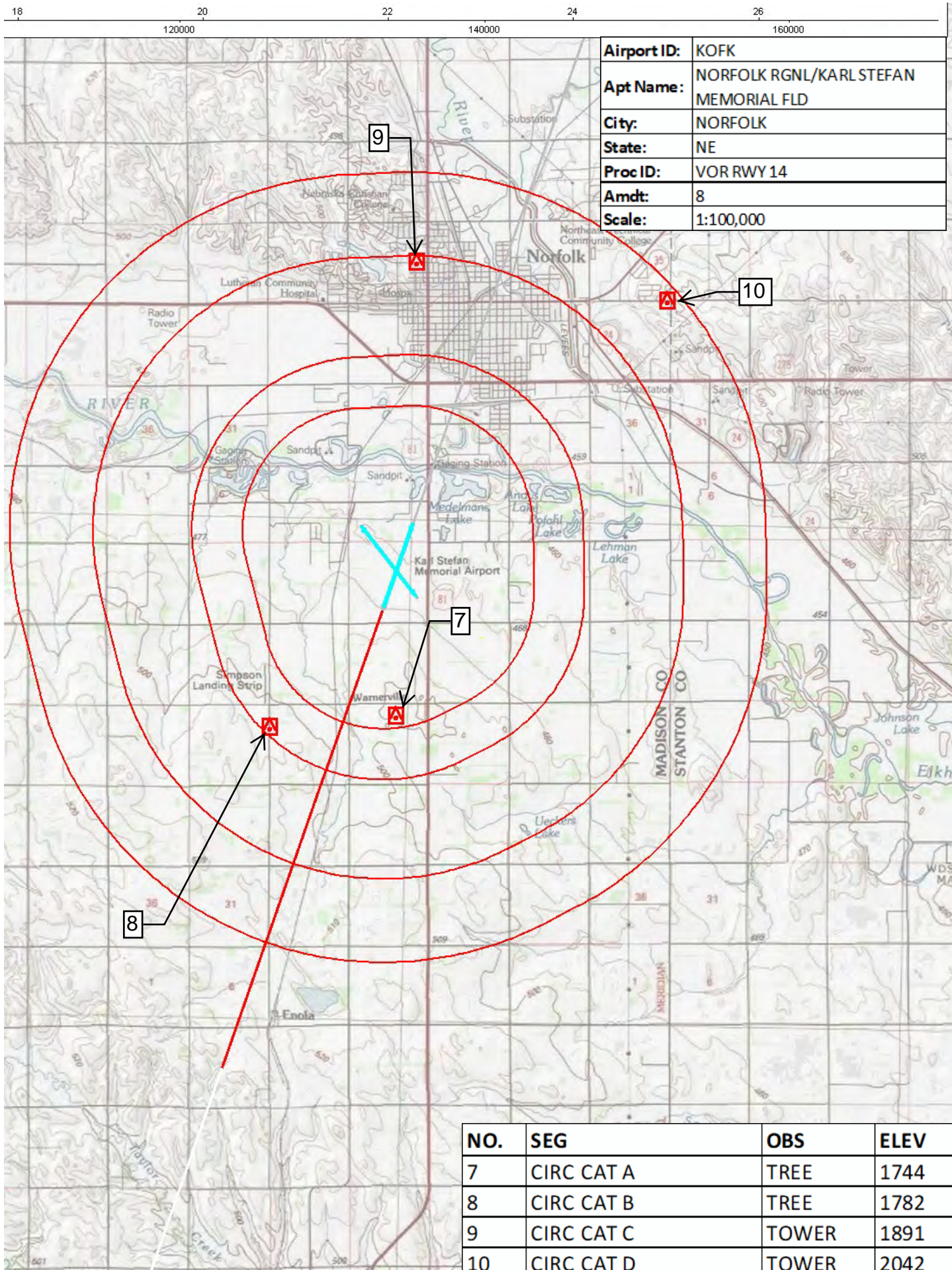
CATEGORY	A	B	C	D
S-14	2220-1	677 (700-1)	2220-2 677 (700-2)	NA
CIRCLING	2220-1	647 (700-1)	2220-2 647 (700-2)	NA
DME MINIMUMS				
S-14	1980-1	437 (500-1)	1980-1½ 437 (500-1½)	NA
CIRCLING	2080-1	507 (600-1)	2080-1½ 507 (600-1½)	NA



VOR RWY 14







**FEDERAL AVIATION ADMINISTRATION
CATEGORICAL EXCLUSION DECLARATION
Proposed Procedure Changes at Karl Stefan Memorial Field (KOFK)
located at Norfolk, Nebraska**

Description of Action:

The Norfolk Regional Airport/Karl Stefan Memorial Field located in Norfolk, Nebraska has completed some updates to their facility. Threshold displacement has changed 300 feet on Runway 2 requiring adjustments to Fixes to be in criteria. Also adding values to category D on the Lines of Minimum table. The FAA does not anticipate any changes to the ground tracks or lowering of altitudes over noise sensitive areas with these changes.

This action proposes to amend eight (8) procedures:

- **ILS or LOC RWY 2** – Headings change to new runway numbers 2/20 from 1/19.
- **RNAV (GPS) RWY 2** – Headings change to new runway numbers 2/20 from 1/19; PFAF moved for new displaced threshold which changed from 5801 to 5501; Intermediate fix AWNUL remains constant; Fixes VEPCU and SAHIW moved from 6 miles to 7.5 miles from fix AWNUL; delete note concerning ERGUC feeder; add values to category D on the Lines of Minimum table.
- **RNAV (GPS) RWY 14** – Headings change to new runway numbers 2/20 from 1/19; PFAF moved for new displaced threshold which changed from 5801 to 5501; Intermediate fix ADUWU remains constant; Fixes SIKAZ and VEFMA moved from 6 miles to 7.5 miles from fix ADUWU; add values to category D on the Lines of Minimum table.
- **RNAV (GPS) RWY 20** – Headings change to new runway numbers 2/20 from 1/19; Intermediate fix AZATY remains constant; Fixes VEDTI and SIMZU moved from 6 miles to 7.5 miles from fix AZATY to meet criteria; delete note concerning PENDE feeder; add values to category D on the Lines of Minimum table.
- **RNAV (GPS) RWY 32** – Headings change to new runway numbers 2/20 from 1/19; Intermediate fix AYEDU remains constant; Fixes VEGRY and SEWRU moved from 6 miles to 7.5 miles from fix AYEDU; delete note concerning PENDE and ERGUC feeders; add values to category D on the Lines of Minimum table.
- **VOR RWY 20** – Headings change to new runway numbers 2/20 from 1/19; add values to category D on the Lines of Minimum table.
- **VOR RWY 14** – Headings change to new runway numbers 2/20 from 1/19; add values to category D on the Lines of Minimum table.
- **VOR RWY 32** – Headings change to new runway numbers 2/20 from 1/19; add values to category D on the Lines of Minimum table.

Declaration of Exclusion:

The FAA has reviewed the above referenced proposed action and it has been determined, by the undersigned, to be categorically excluded from further environmental documentation according to FAA Order 1050.1F, "Environmental Impacts: Policies and Procedures." These procedure amendments require no further environmental review, as the modifications meet *de minimis* requirements in that Aircraft operations average 31/day for 12-month period ending June 26, 2019. The implementation of this action will not result in any extraordinary circumstances in accordance with FAA Order 1050.1F.

Basis for this Determination:

This review was conducted in accordance with policies and procedures in Department of Transportation Order 5610.1C, "Procedures for Considering Environmental Impacts" and FAA Order 1050.1F.

The applicable Categorical Exclusion is:

5- 6.5.k: Publication of existing air traffic control procedures that do not essentially change existing tracks; create new tracks, change altitude, or change concentration of aircraft on these tracks. (ATO, AVS)

Concurrence/Reviewed By:

Signature: _____

Title: Jennifer Sheetz, NISC Contractor,
Environmental Specialist, ATO Central Service Center, AJV-C2

Approved By:

Signature: _____

Title: Steve Szukala, (A) Manager,
Operations Support Group, ATO Central Service Center, AJV-C2