

Flight Procedures Cover Page	Task Action: P-NOTAM	Task Type: IAP	Estimated Chart Date: 09/03/2026	APWS Task ID: 1DB1689C2F3C411CAEF688DC0D37B282	APWS Project ID: 1A2B63F30B564BCAA8F60D6B3E174C7C
Procedure: VOR/DME RWY 12 ORIG-D		Enroute: NO	Specialist: Johnson, Timothy		Agreement Number:
Airport ID: KGCK			Airport City: GARDEN CITY		State: KS
Facility ID: GCK	Facility Type: VORTAC	Flight Inspection Remark Type:			

Procedure Comments:

Visibility Initiative (Garmin) - Update IAP visibility minimums IAW Order 8260.3, Chapter 3, Section 3-3. Visibility Minimums.

PROCESSED IAW TECHNICAL SUPPORT GROUP (AJF-17) MEMO DATED 07/07/2021, SUBJECT: GUIDANCE FOR PROCEDURAL CHANGES REQUIRING FLIGHT INSPECTION/VALIDATION.

CONTACT: CASEY HILL (405) 954-0624.



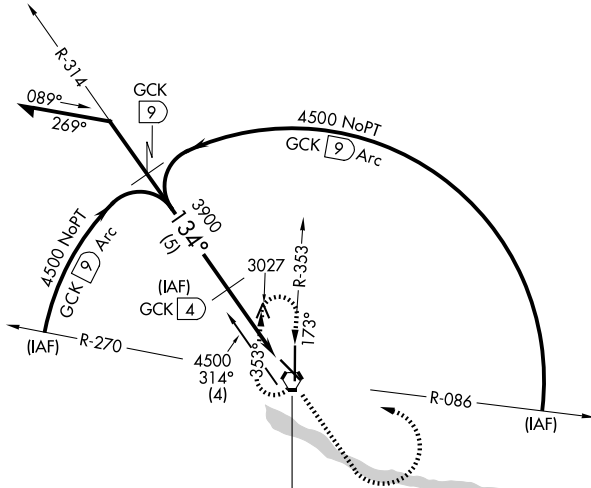
VORTAC GCK 113.3 Chan 80	APP CRS 134°	Rwy Ldg TDZE Apt Elev 5700 2891 2891
--	------------------------	--

VOR/DME RWY 12

GARDEN CITY RGNL (GCK)

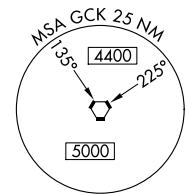
MISSED APPROACH: Climb to 4000 then climbing left turn to 4500 direct GCK VORTAC and hold.

ASOS 121.325	KANSAS CITY CENTER 125.2 285.425	GARDEN CITY TOWER * 118.15 (CTAF) 0 254.4	GND CON 119.0 254.4	UNICOM 122.95
------------------------	--	---	-------------------------------	-------------------------

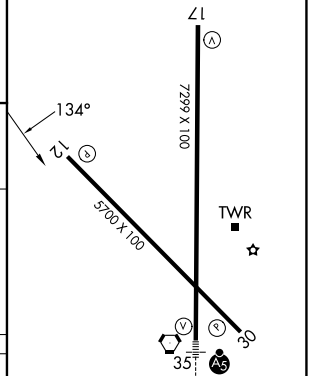
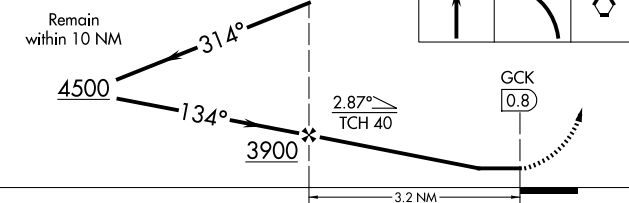


GARDEN CITY
113.3 GCK
Chan 80

ELEV 2891	D	TDZE 2891
-----------	----------	-----------



VGSI and descent angles not coincident
(VGSI Angle 3.00/TCH 47).



CATEGORY	A	B	C	D
S-12		3280-1 389 (400-1)		3280-1¼ 389 (400-1¼)
CIRCLING	3320-1 429 (500-1)	3360-1 469 (500-1)	3480-1½ 589 (600-1½)	3480-2 589 (600-2)

REIL Rwy 12, 17, and 30
MIRL Rwy 12-30
HIRL Rwy 17-35

NC-2, 19 FEB 2026 to 19 MAR 2026

NC-2, 19 FEB 2026 to 19 MAR 2026