

Flight Procedures Cover Page	Task Action: Abbreviated Amendment	Task Type: IAP	Estimated Chart Date: 10/02/2025	APWS Task ID: 1F4F089473314E71B09651AB5DA440B1	APWS Project ID: 65ED104249E84022B63D671A3D3E6DA2
Procedure: RNAV (GPS) RWY 17 AMDT 1B		Enroute: NO	Specialist: Denton, Hope		Agreement Number:
Airport ID: KONY			Airport City: OLNEY		State: TX
Facility ID:	Facility Type:	Flight Inspection Remark Type:			
<div>Procedure Comments: UTILIZED ACTIVE DATA FOR KONY AIRPORT AND RUNWAYS. CANCELS NOTAM FDC 5/2306. PROCESSED IAW TECHNICAL SUPPORT GROUP (AJF-17) MEMO DATED 07/07/2021 GUIDANCE FOR PROCEDURAL CHANGES REQUIRING FLIGHT INSPECTION/VALIDATION. CONTACT CASIMIR TABAKA: AJV-A432, 405-202-7857.</div> <div>QUALITY 41 CHECKED</div> <div>QUALITY 42 CHECKED</div>					

WAAS CH 97332 W17A	APP CRS 175°	Rwy Idg TDZE 1275 Apt Elev 1275
--	------------------------	---

RNAV (GPS) RWY 17

OLNEY MUNI (ONY)

RNP APCH - GPS.



NA

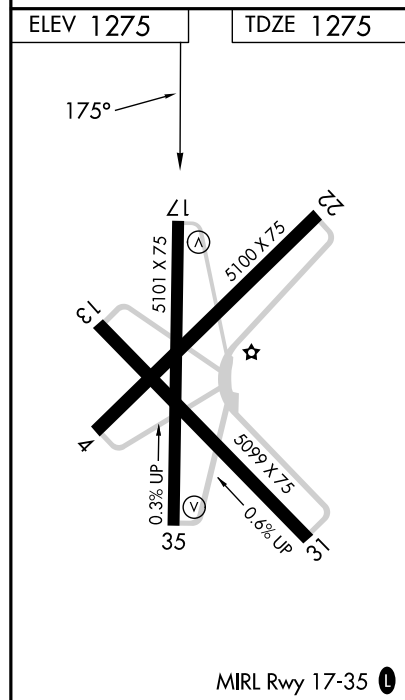
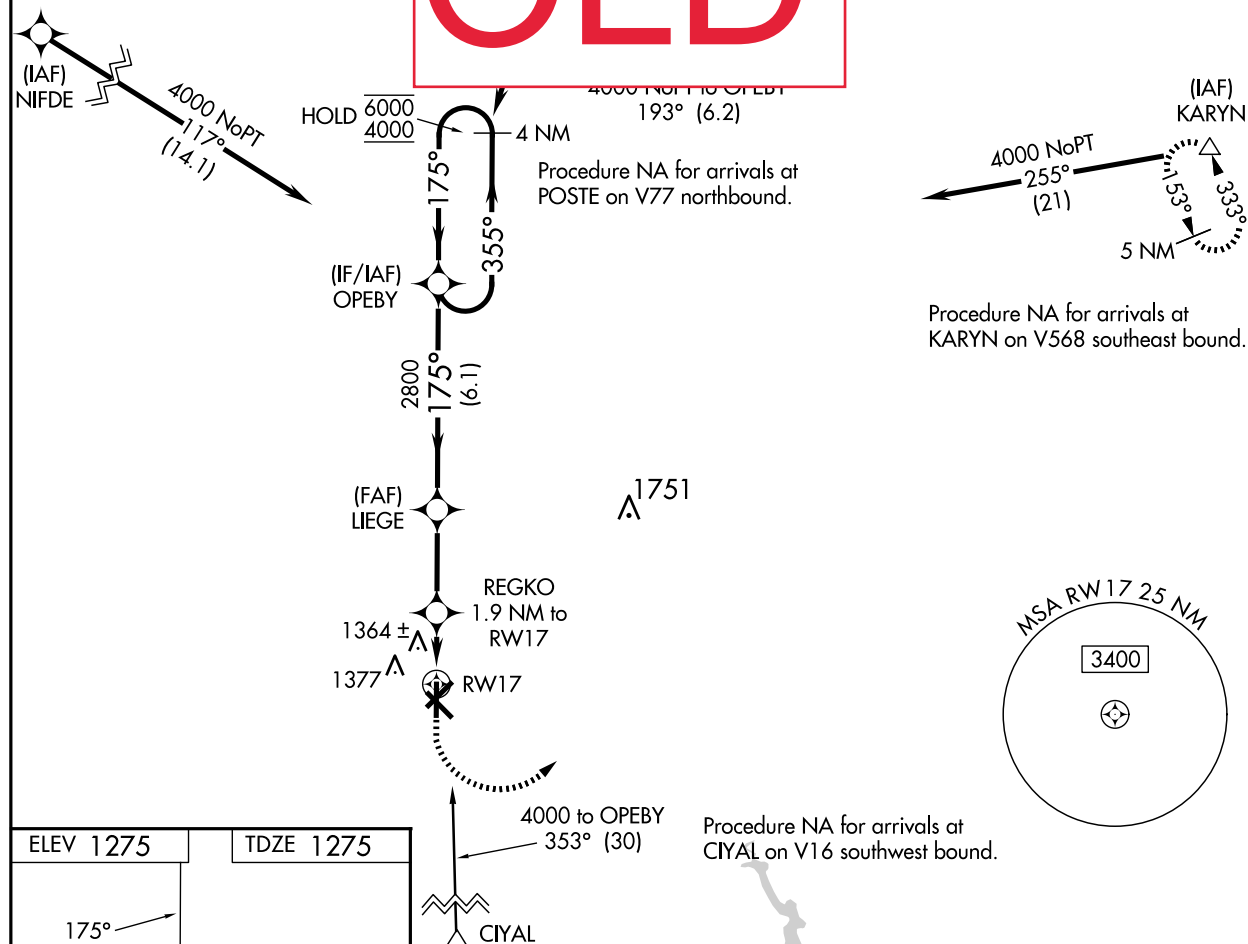
Rwy 17 helicopter visibility reduction below $\frac{3}{4}$ SM NA.
Baro-VNAV NA. Use Graham altimeter setting.

MISSED APPROACH: Climb to
1800 then climbing left turn to
5000 direct KARYN and hold.

RPH AWOS-3P
118.025

UNICOM
122.8 (CTAF)

OLD



CATEGORY		A	B	C	D
LPV	DA	1592- $\frac{7}{8}$	317 (400- $\frac{7}{8}$)		NA
LNAV/VNAV	DA	1592- $\frac{7}{8}$	317 (400- $\frac{7}{8}$)		NA
LNAV	MDA	1700-1	425 (500-1)	1700-1 $\frac{1}{4}$ 425 (500-1 $\frac{1}{4}$)	NA
CIRCLING		1760-1	485 (500-1)	1760-1 $\frac{1}{2}$ 485 (500-1 $\frac{1}{2}$)	NA