

Flight Procedures Cover Page	Task Action: FLIGHT CHECK	Task Type: IAP	Estimated Chart Date: 12/26/2024	APWS Task ID: 1F57A85796BD41A5968CCA20E882E528	APWS Project ID: 35EBC28A5B1340F791449891B10D487D
Procedure: RNAV (GPS) Y RWY 3 AMDT 2		Enroute: NO	Specialist: Raimi, Kamarudini		Agreement Number:
Airport ID: KSMO			Airport City: SANTA MONICA		State: CA
Facility ID:	Facility Type:	Flight Inspection Remark Type: New FC Slot			

Procedure Comments:

UTILIZED ACTIVE AIRNAV DATA FOR KSMO AIRPORT AND RUNWAYS.

ADDED CROSSING RESTRICTION OF 6,000 MSL AND SPEED 210 KIAS AT WAKER FIX.

CONTACT ROBERT HAMILTON: AJV-A433, 405-954-4608.



FIPC BASIC FORM

PROCEDURE: RNAV (GPS) Y RWY 3 AMDT 2		AIRPORT NAME: SANTA MONICA MUNI		AIRPORT ID: KSMO	SPECIAL CONTROL NO: SG-10-059-24
FAC ID: KSMO03.02Y		CITY: SANTA MONICA		ST: CA	ORIG CHART DATE: 02/20/2025
DFL TYPE: PROC/W	THIRD PARTY: <input type="checkbox"/> YES	EST. TIME ON SITE: 0.4	REIMB. NUMBER:	PTS TASK ID: 1F57A85796BD41A5968CCA20E882E528	

PREFLIGHT NOTES

REVIEWER: troy e devine			DATE: 11/05/2024		
COMMENTS:			CHECK ONE:		
			<input checked="" type="checkbox"/> FLT CK REQ <input type="checkbox"/> NFCR <input type="checkbox"/> REJECT		
			YES	NO	
			CPV COMPLETE?		X

PROCEDURE RESULTS

INSPECTION DATE: 11/05/2024	CREW #: VN502	N #: N75	INSTRUMENT PROCEDURE STATUS: <input checked="" type="checkbox"/> SAT <input type="checkbox"/> SAT W/CHANGES <input type="checkbox"/> UNSAT		ARINC CODING: <input checked="" type="checkbox"/> SAT <input type="checkbox"/> SAT/GOLD <input type="checkbox"/> UNSAT	
FLIGHT INSPECTOR SIGNATURE: troy e devine @ 11/05/2024 16:29			PRINTED NAME: DEVINE, TROY ELLEN			NOTAM INITIATED? <input type="checkbox"/> YES <input checked="" type="checkbox"/> NO

FLIGHT INSPECTOR REMARKS:
 SG-10-059-24, Santa Monica Muni, Santa Monica CA., RNAV (GPS) Y RWY 3 Amnd 2, Flown: SAT
 Short amendment: Mins changed, crossing Alt added at IAF WAKER, minor fix location changes, LP RWY Survey -SAT
 Controlling obstacles verified.

IN-FLIGHT OBSTACLE REPORT

OBSTRUCTION ID #:	COORDINATES OR LOCATION:	GNSS ALTITUDE (MSL):	BAROMETRIC ALTITUDE (MSL):	HEIGHT ABOVE GROUND LEVEL:
--------------------------	---------------------------------	-----------------------------	-----------------------------------	-----------------------------------

RNAV (GPS) Y RWY 3

SANTA MONICA MUNI (SMO)

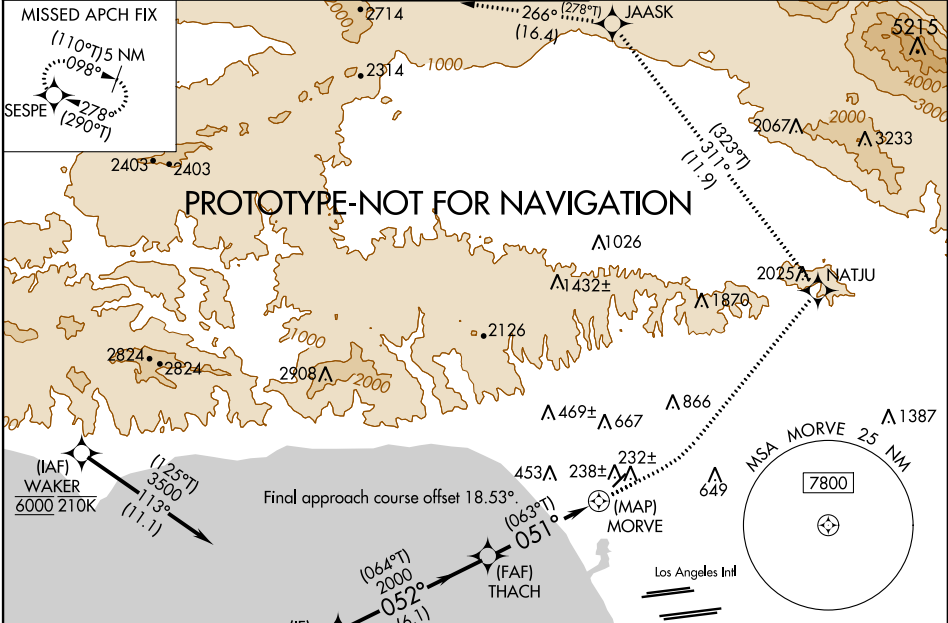
WAAS CH 50339 W03A	APP CRS 051°	Rwy Idg 3500 TDZE 164 Apt Elev 170
--	------------------------	---

RNP APCH - GPS.

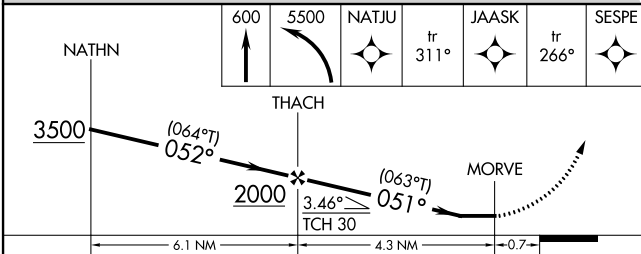
▼ Rwy 3 helicopter visibility reduction below ¾ SM N.A.

MISSED APPROACH: Climb to 600 then climbing left turn to 5500 direct NATJU and track 311° to JAASK and track 266° to SESPE and hold.
* Missed approach requires minimum climb of 280 feet per NM to 2300.

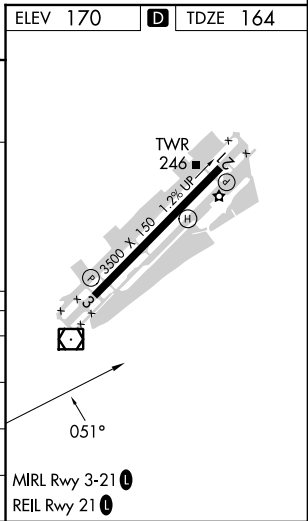
ATIS 119.15	SOCAL APP CON 135.05 317.5	SANTA MONICA TOWER ★ 120.1 (CTAF) 257.8	GND CON 121.9	UNICOM 122.95
-----------------------	--------------------------------------	---	-------------------------	-------------------------



ELEV 170	D TDZE 164
----------	-------------------



CATEGORY	A	B	C	D
LP MDA*	480-1 316 (400-1)			
LNAV MDA*	500-1 336 (400-1)			
LP MDA	820-1 656 (700-1)		820-1 656 (700-1 ½)	
LNAV MDA	1000-1 836 (900-1)	1000-1 836 (900-1 ¼)	1000-2 836 (900-2 ½)	



WAAS CH 50339 W03A	APP CRS 051°	Rwy Idg TDZE 164 Apt Elev 170	3500
--	------------------------	---	-------------

OLD

RNAV (GPS) Y RWY 3

SANTA MONICA MUNI (SMO)

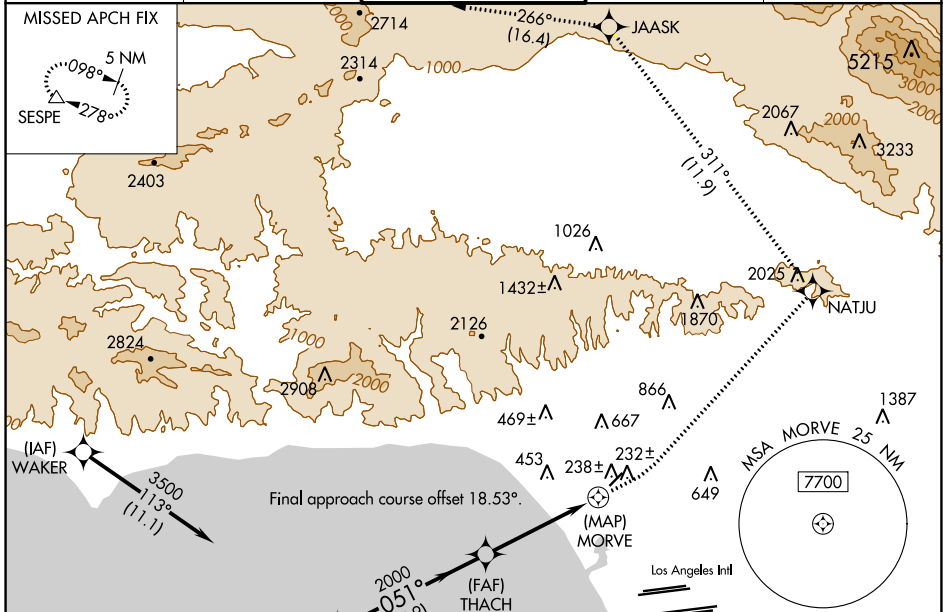
RNP APCH.

▽

▲ Rwy 3 helicopter visibility reduction below ¾ SM NA.

MISSED APPROACH: Climb to 600 then climbing left turn to 5500 direct NATJU and track 311° to JAASK and track 266° to SESPE and hold.
* Missed approach requires minimum climb of 300 feet per NM to 2400.

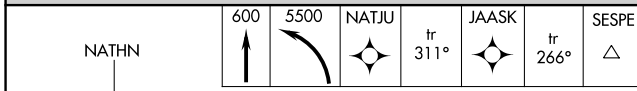
ATIS 119.15	SOCAL APP CON 135.05 317.5	SANTA MONICA TOWER * 120.1 (CTAF) 257.8	GND CON 121.9	UNICOM 122.95
-----------------------	--------------------------------------	--	-------------------------	-------------------------



SW-3, 13 JUN 2024 to 11 JUL 2024

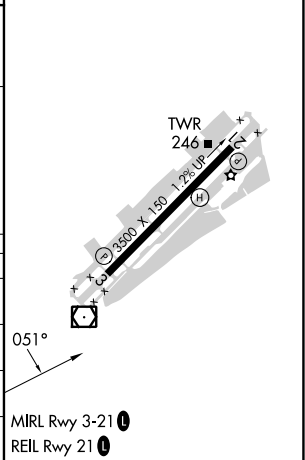
SW-3, 13 JUN 2024 to 11 JUL 2024

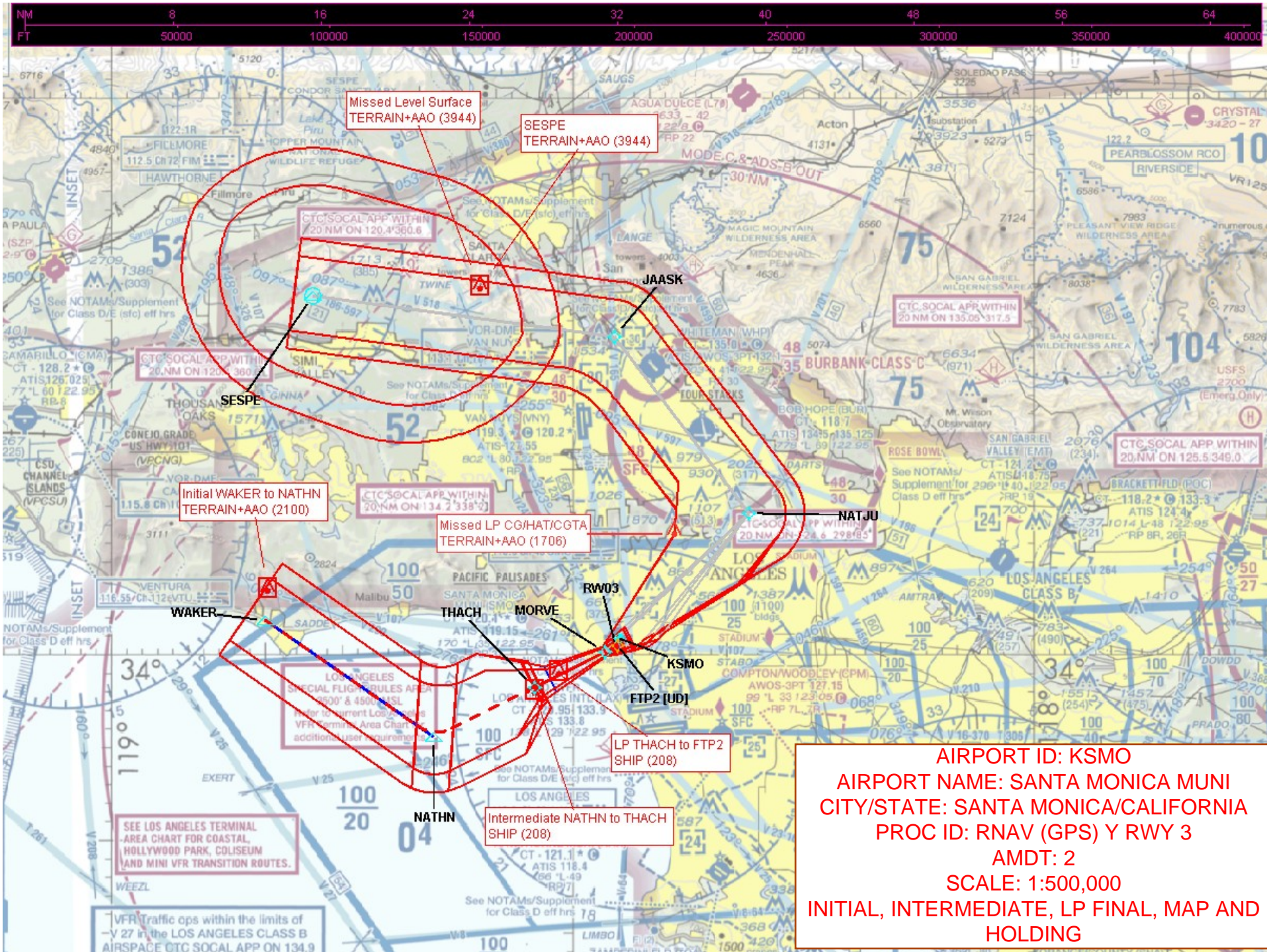
ELEV 170	D TDZE 164
----------	-------------------

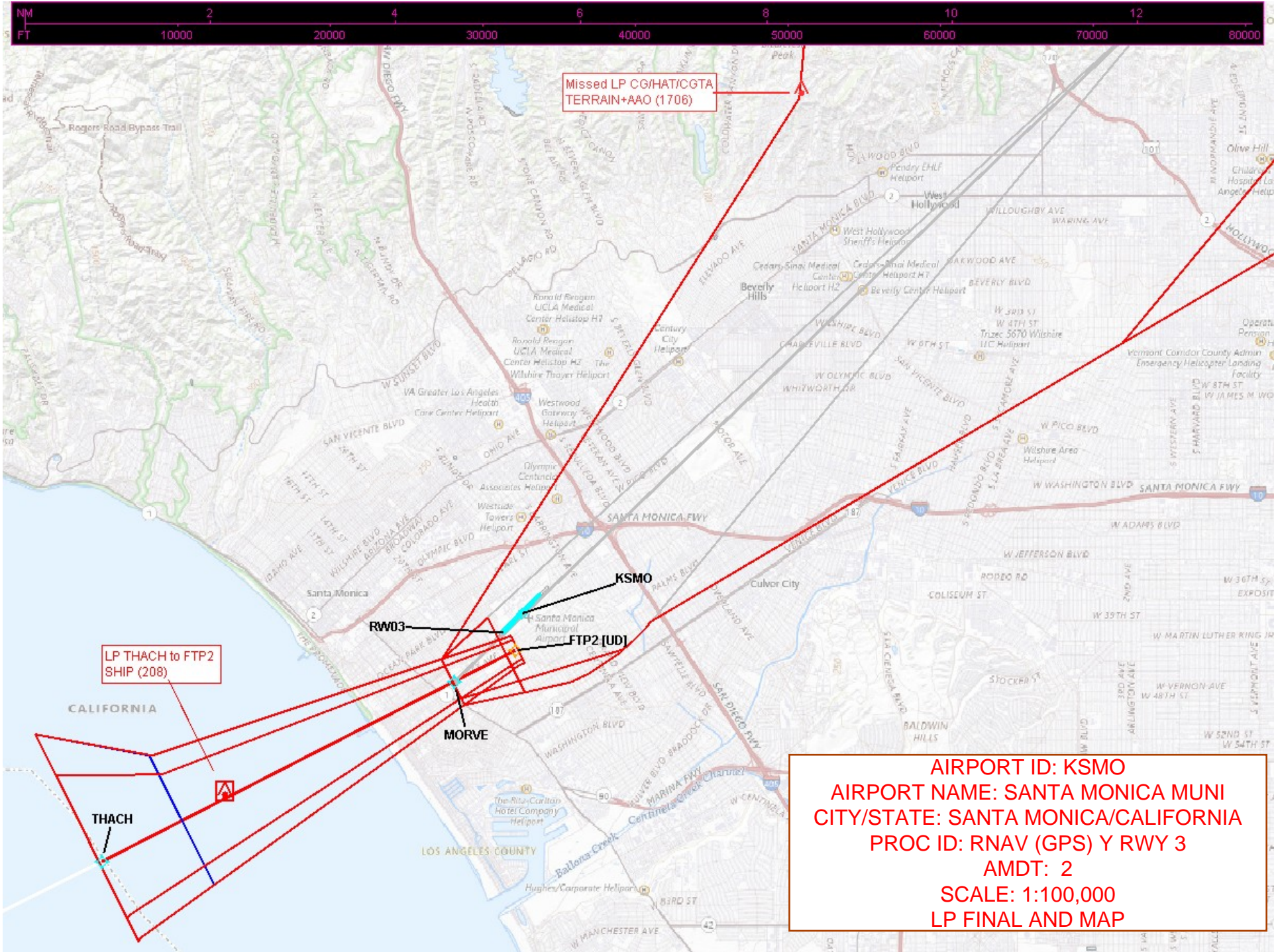


	600	5500	NATJU	JAASK	SESPE
	↑	↶	tr 311°	tr 266°	△
	Visual Segment - Obstacles.				
	5.9 NM	4.5 NM	0.6 NM		

CATEGORY	A	B	C	D
LP MDA*	460-1 296 (300-1)			
LP MDA	920-1 756 (800-1)	920-1¼ 756 (800-1¼)	920-2½	756 (800-2½)
LNAV MDA*	500-1 336 (400-1)	500-1¼ 336 (400-1¼)	500-2½	336 (400-2½)
LNAV MDA	1020-1 856 (900-1)	1020-1¼ 856 (900-1¼)	1020-2½	856 (900-2½)





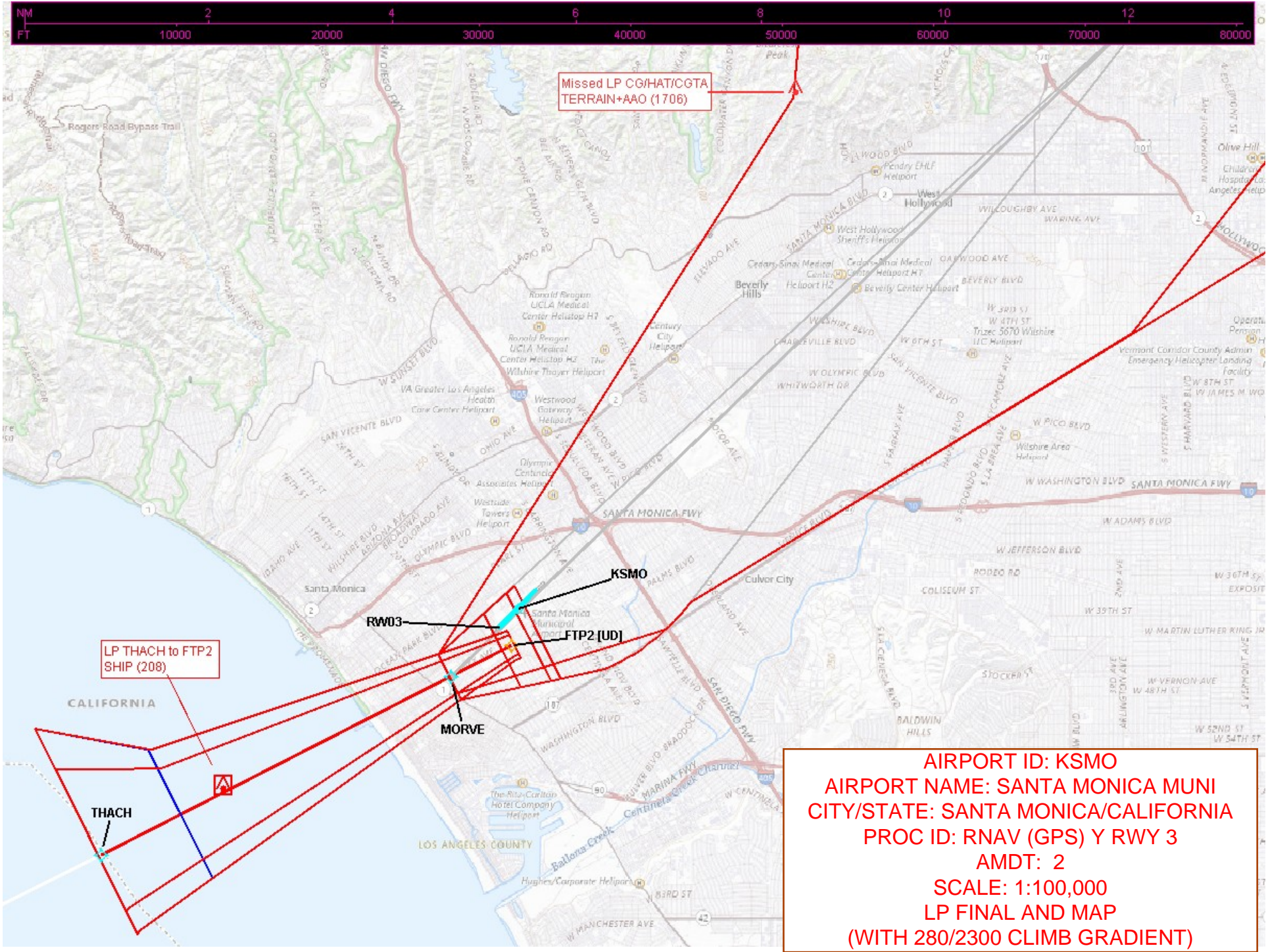


Missed LP CG/HAT/CGTA
TERRAIN+AO (1706)

LP THACH to FTP2
SHIP (208)

THACH

AIRPORT ID: KSMO
AIRPORT NAME: SANTA MONICA MUNI
CITY/STATE: SANTA MONICA/CALIFORNIA
PROC ID: RNAV (GPS) Y RWY 3
AMDT: 2
SCALE: 1:100,000
LP FINAL AND MAP



Missed LP CG/HAT/CGTA
TERRAIN+AO (1706)

LP THACH to FTP2
SHIP (208)

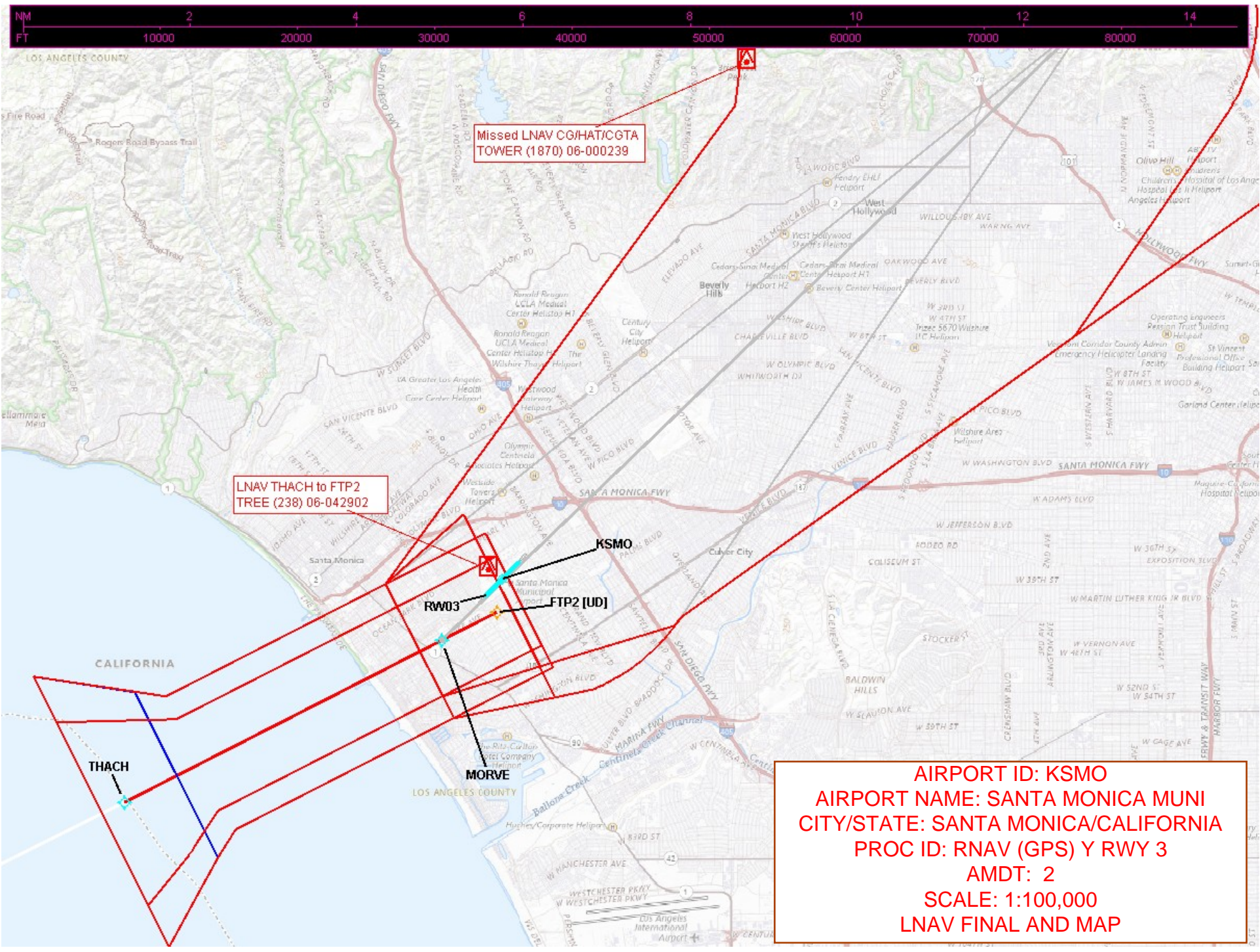
THACH

KSMO

FTP2 [UD]

MORVE

AIRPORT ID: KSMO
AIRPORT NAME: SANTA MONICA MUNI
CITY/STATE: SANTA MONICA/CALIFORNIA
PROC ID: RNAV (GPS) Y RWY 3
AMDT: 2
SCALE: 1:100,000
LP FINAL AND MAP
(WITH 280/2300 CLIMB GRADIENT)



Missed LNAV CG/HAT/CGTA
TOWER (1870) 06-00239

LNAV THACH to FTP2
TREE (238) 06-042902

KSMO

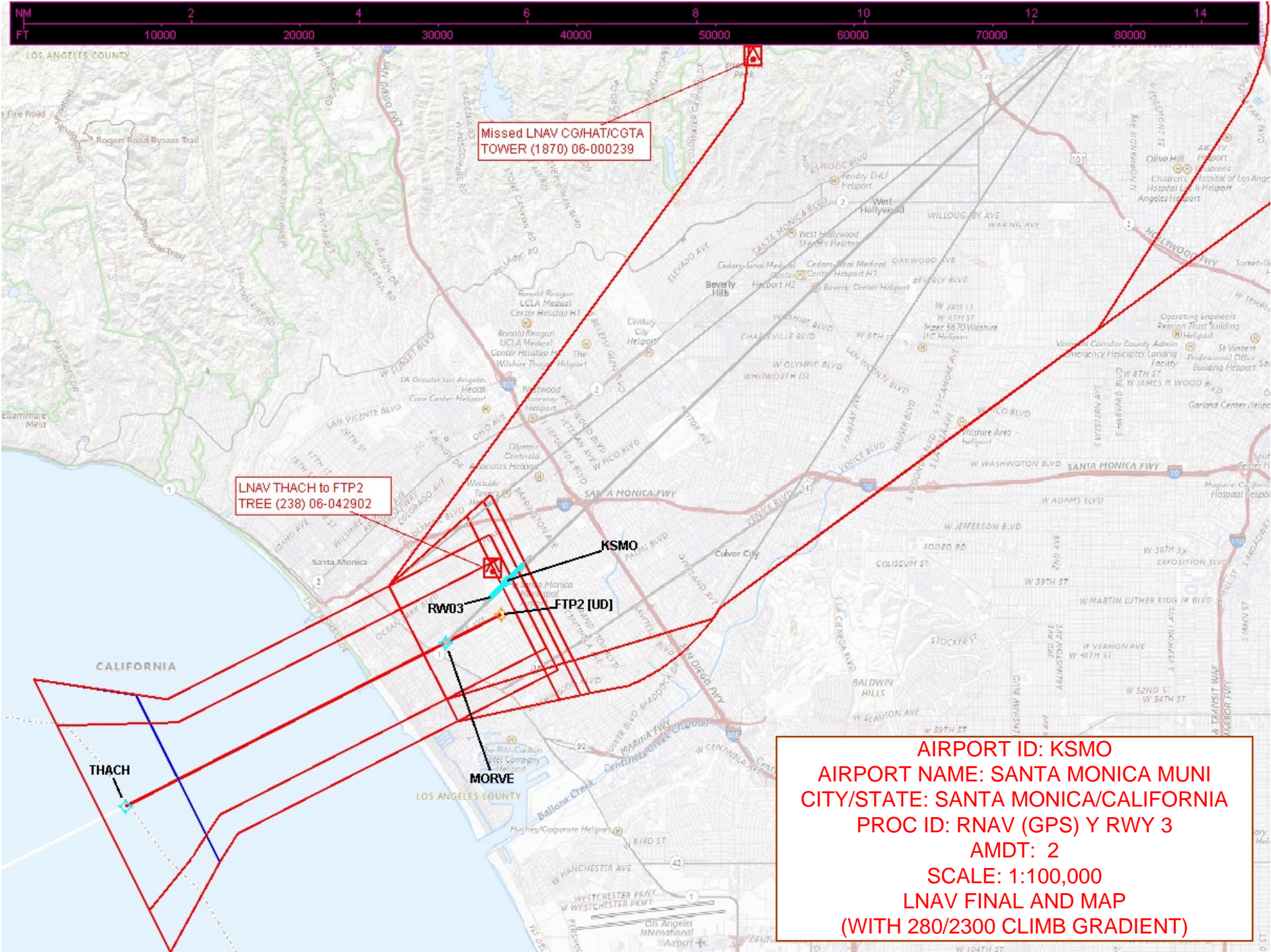
FTP2 [UD]

MORVE

AIRPORT ID: KSMO
AIRPORT NAME: SANTA MONICA MUNI
CITY/STATE: SANTA MONICA/CALIFORNIA
PROC ID: RNAV (GPS) Y RWY 3
AMDT: 2
SCALE: 1:100,000
LNAV FINAL AND MAP

THACH

MORVE



Missed LNAV CG/HAT/CGTA
TOWER (1870) 06-00239

LNAV THACH to FTP2
TREE (238) 06-042902

AIRPORT ID: KSMO
AIRPORT NAME: SANTA MONICA MUNI
CITY/STATE: SANTA MONICA/CALIFORNIA
PROC ID: RNAV (GPS) Y RWY 3
AMDT: 2
SCALE: 1:100,000
LNAV FINAL AND MAP
(WITH 280/2300 CLIMB GRADIENT)