

ILS or LOC RWY 9 AURORA MUNI (A.R.R.)

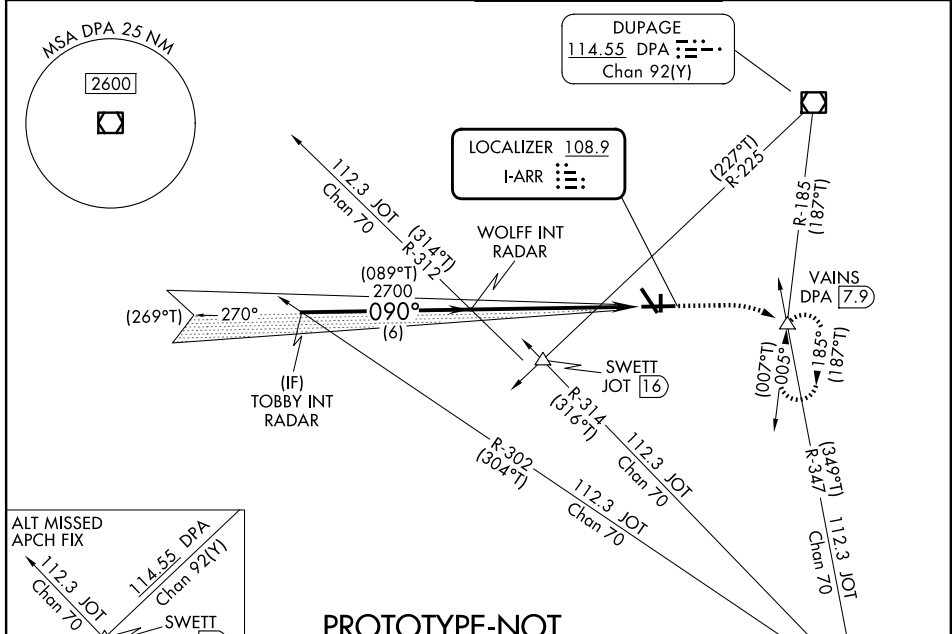
LOC I-ARR 108.9	APP CRS 090°	Rwy Ldg 6502
		TDZE 707
		Apt Elev 712

RADAR required for procedure entry.

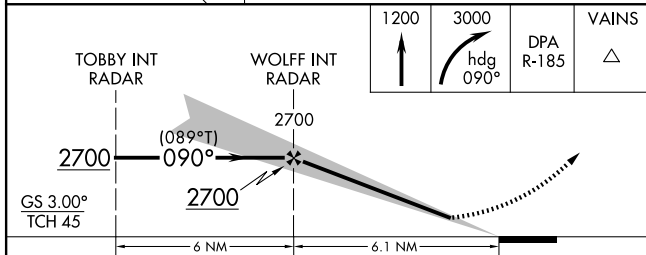
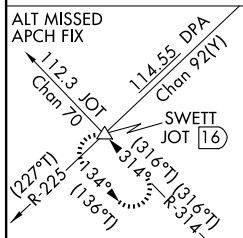
⚠ For inop ALS, increase ILS all Cats visibilities to ¾ SM and S-LOC 9 Cat C/D visibilities to 1¼ SM.

MALSR  MISSED APPROACH: Climb to 1200 then climbing right turn to 3000 on heading 090° and on DPA VOR/DME R-185 to VAINS INT/DPA 7.9 DME and hold, continue climb-in-hold to 3000.

ATIS 125.85	CHICAGO APP CON 133.5 349.0	AURORA TOWER ★ 120.6 (CTAF) 0	GND CON 121.7
-----------------------	---------------------------------------	---	-------------------------

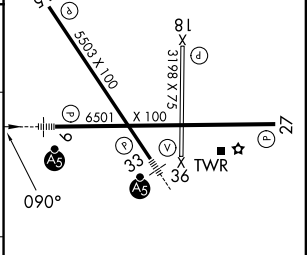





PROTOTYPE-NOT FOR NAVIGATION



CATEGORY	A	B	C	D
S-ILS 9	907-½ 200 (200-½)			
S-LOC 9	1240-½ 533 (600-½)		1240-1 533 (600-1)	
CIRCLING	1240-1 528 (600-1)		1300-1½ 588 (600-1½)	1340-2 628 (700-2)

ELEV 712	D	TDZE 707
----------	----------	----------



MIRL Rwy 18-36 					
HIRL Rwy 15-33 and 9-27 					
REIL Rwy 15, 18, 27, and 36 					
FAF to MAP 6.1 NM					
Knots	60	90	120	150	180
Min:Sec	6:06	4:04	3:03	2:26	2:02