

Flight Procedures Cover Page	Task Action: Abbreviated Amendment	Task Type: IAP	Estimated Chart Date: 09/03/2026	APWS Task ID: 1FAAA8638A4C4B01B88F4C8686D7E80C	APWS Project ID: F28826F79332449D8E659FF93917FAC3
Procedure: ILS OR LOC RWY 9 AMDT 4B		Enroute: NO	Specialist: Welch, Luke		Agreement Number:
Airport ID: KARR			Airport City: CHICAGO/AURORA		State: IL
Facility ID: ARR	Facility Type: ILS	Flight Inspection Remark Type:			

**Procedure Comments:**

Pending AIRNAV data used.

Cancel NOTAM FDC 5/4702 at publication.

Processed IAW Technical Support Group (AJF-17) Memo dated 07/07/2021, Subject: Guidance for Procedural Changes Requiring Flight Inspection/Validation

**ILS OR LOC RWY 9 AMDT 4B:**

05/08/26: THIS IS AN UPDATED COPY OF THE FORM DEVELOPED ON 03/11/2026.

1. UPDATE ALTERNATE MISSED APPROACH FROM "CLIMB TO 1200 THEN CLIMBING RIGHT TURN TO 3000 ON HEADING 287 AND JOT VOR/DME R-314 TO SWETT INT/JOT 16.00 DME AND HOLD, CONTINUE CLIMB-IN-HOLD TO 3000." TO "CLIMB TO 1200 THEN CLIMBING RIGHT TURN TO 3000 ON HEADING 287 AND ON JOT VOR/DME R-314 TO SWETT/JOT 16.00 DME AND HOLD, CONTINUE CLIMB-IN-HOLD TO 3000. (DME REQUIRED)"

**Fix SWETT:**

5/12/2026: THIS IS AN UPDATED COPY OF THE FORM DEVELOPED ON 4/15/2026.

1. REMOVE INT FROM FIX TYPE.
2. REMOVE FAC 2, DPA, AND UPDATE FIX USE FOR ARR IL9.

POC: Kyle Thompson, (405) 954-2135



LOC I-ARR <b>108.9</b>	APP CRS <b>090°</b>	Rwy Ldg TDZE Apt Elev	<b>6501</b> <b>707</b> <b>712</b>
---------------------------	------------------------	-----------------------------	---

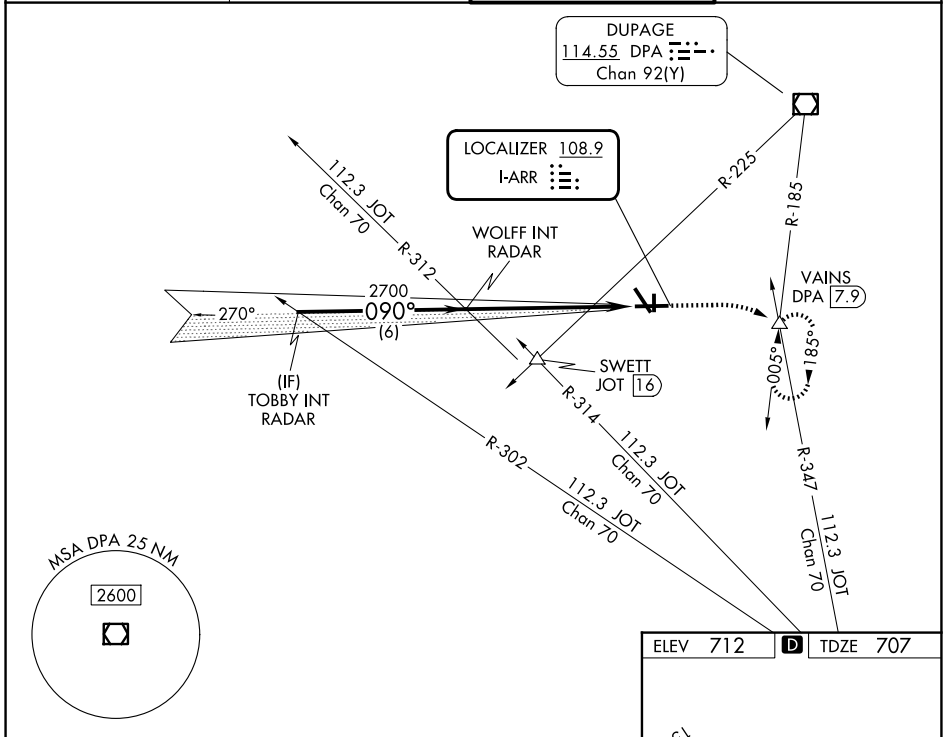
OLD

## ILS or LOC RWY 9

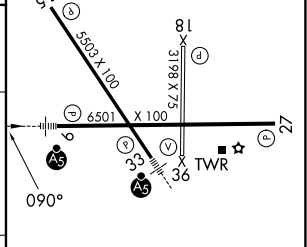
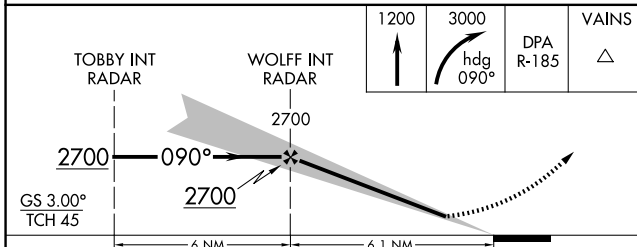
AURORA MUNI (A.R.R.)

RADAR required for procedure entry. ▼ For inop ALS, increase S-LOC 9 Cat C/D visibilities to 1½ SM.	MALSR 	MISSED APPROACH: Climb to 1200 then climbing right turn to 3000 on heading 090° and on DPA VOR/DME R-185 to VAINS INT/DPA 7.9 DME and hold, continue climb-in-hold to 3000.
--	-----------	---

ATIS <b>125.85</b>	CHICAGO APP CON <b>133.5 349.0</b>	AURORA TOWER ★ <b>120.6 (CTAF)</b>	GND CON <b>121.7</b>
-----------------------	---------------------------------------	---------------------------------------	-------------------------



ELEV 712	<b>D</b>	TDZE 707
----------	----------	----------



CATEGORY	A	B	C	D
S-ILS 9	907-½ 200 (200-½)			
S-LOC 9	1220-½ 513 (600-½)		1220-1 513 (600-1)	
CIRCLING	1220-1 508 (600-1)		1300-1½ 588 (600-1½)	1320-2 608 (700-2)

MIRL Rwy 18-36 <b>(L)</b>				
HIRL Rwy 15-33 and 9-27 <b>(L)</b>				
REIL Rwy 15, 18, 27, and 36 <b>(L)</b>				
FAF to MAP 6.1 NM				
Knots	60	90	120	150
Min:Sec	6:06	4:04	3:03	2:26

EC-3, 25 DEC 2025 to 22 JAN 2026

EC-3, 25 DEC 2025 to 22 JAN 2026