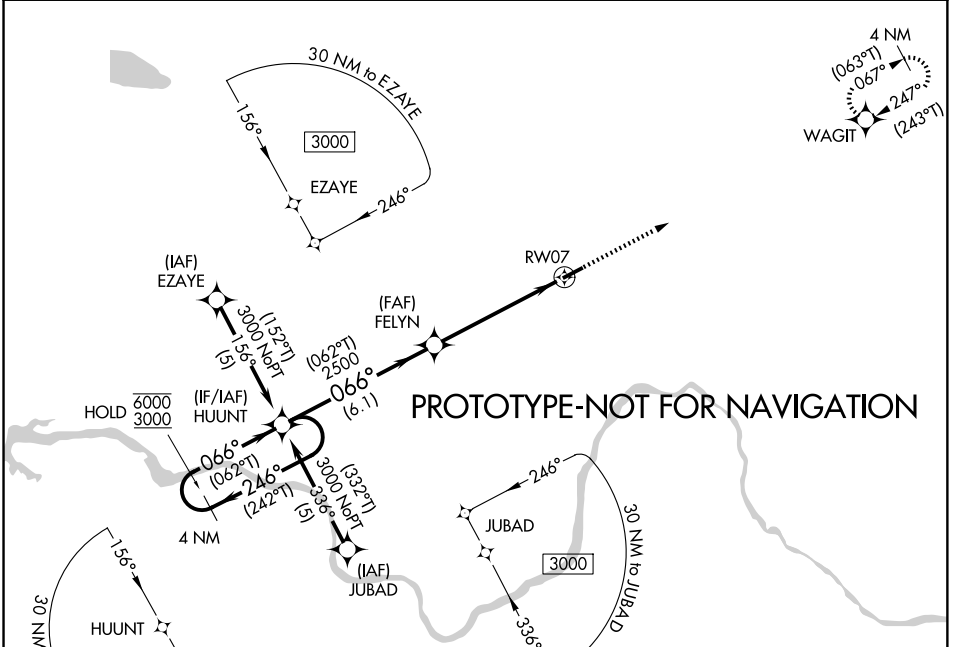


APP CRS <b>066°</b>	Rwy Ldg TDZE Apt Elev	<b>4033</b> <b>775</b> <b>775</b>
------------------------	-----------------------------	---

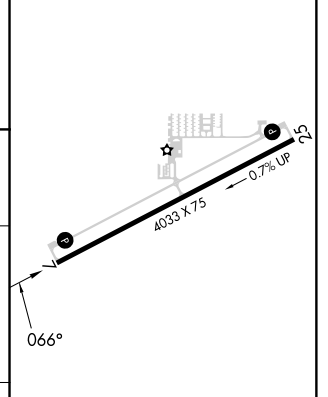
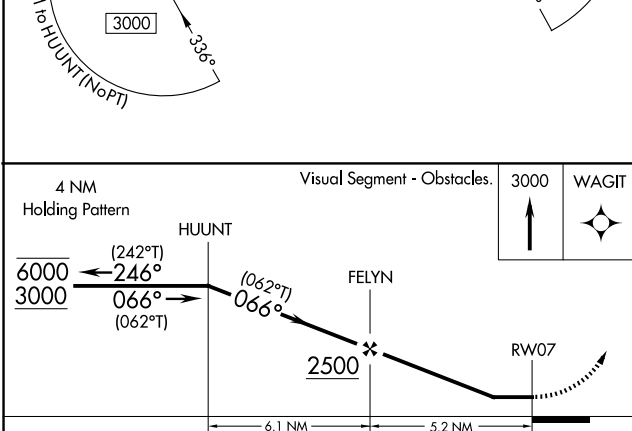
# RNAV (GPS) RWY 7

PAUL C MILLER/SPARTA (8D4)

RNP APCH - GPS.		MISSED APPROACH: Climb to 3000 direct WAGIT and hold.
<p><b>⚠</b> Rwy 7 helicopter visibility reduction below <math>\frac{3}{4}</math> SM NA.  <b>⚠</b> When local altimeter setting not received, use GRR altimeter setting.</p>		
AWOS-3PT <b>126.65</b>	GREAT LAKES APP CON * <b>124.6 257.6</b>	UNICOM <b>122.8 (CTAF) 0</b>



ELEV 775	TDZE 775
----------	----------



CATEGORY	A	B	C	D
LNAV MDA	1380-1	605 (700-1)		NA
CIRCLING	1380-1	605 (700-1)		NA

MRL Rwy 7-25 0  
REL Rwy 7 and 25 0