

FEDERAL AVIATION ADMINISTRATION
FLIGHT STANDARDS SERVICE
STANDARD TERMINAL ARRIVAL (STAR)

Bearings, headings, courses, tracks and radials are magnetic. Elevations and altitudes are in feet, MSL. Altitudes are minimum altitudes unless otherwise indicated.
Distances are in nautical miles (NM). Graphic depictions attached.

Arrival Name	Number	STAR Computer Code	Superseded Number	Dated	Effective Date
SERFR (RNAV)	THREE	SERFR.SERFR3	TWO	12/10/2015	

TRANSITION ROUTES:

Transition Name	Transition Computer Codes	From FIX/NAVAID	To FIX/NAVAID	Mag Course	Distance	MEA	MOCA	MAA	Crossing Altitudes / Fixes
-----------------	------------------------------	--------------------	------------------	------------	----------	-----	------	-----	----------------------------

ARRIVAL ROUTE DESCRIPTION:

FROM SERFR ON TRACK 313.71/30.32 TO CROSS NRRLI AT OR ABOVE FL200 AND AT 280 KIAS, THEN ON TRACK 313.49/17.48 TO CROSS WWAVS BETWEEN 15000 AND FL190 AND AT 280 KIAS, THEN ON TRACK 333.37/12.85 TO CROSS EPICK BETWEEN 10000 AND 15000 AND AT 280 KIAS, THEN ON TRACK 328.66/20.34 TO CROSS NARWL AT OR ABOVE 8000 AND AT 240 KIAS, THEN ON TRACK 328.54/6.29 TO CROSS EDDYY AT 6000 AND AT 240 KIAS. EXPECT ASSIGNED INSTRUMENT APPROACH (RWY28L/R).

PROCEDURAL DATA NOTES:

NOTE: RADAR REQUIRED

NOTE: RNAV 1

NOTE: DME/DME/IRU OR GPS REQUIRED

NOTE: EXPECT TO RECEIVE "DESCEND VIA" CLEARANCE FROM OAKLAND CENTER. NORTHERN CALIFORNIA TRACON WILL ASSIGN LANDING RUNWAY.

FIXES AND/OR HOLDING PATTERNS:

CHART HOLDING AT EPICK: HOLD SE, LT, 333.37 INBOUND, 10 NM LEGS.

CHART HOLDING AT NRRLI: HOLD SE, LT, 313.71 INBOUND, 10 NM LEGS.

CHART HOLDING AT SERFR: HOLD SE, LT, 313.71 INBOUND, 10 NM LEGS.

CHART HOLDING AT WWAVS: HOLD SE, LT, 313.49 INBOUND, 10 NM LEGS.

CHART STOKD

CHART MAKRS

COMMUNICATIONS:

ATIS, OAKLAND CENTER, NORCAL APP CON, SFO ATCT, GND CON

AIRPORTS SERVED:

SAN FRANCISCO INTL (KSFO), SAN FRANCISCO, CA

LOST COMMUNICATIONS PROCEDURE:



FEDERAL AVIATION ADMINISTRATION
FLIGHT STANDARDS SERVICE
STANDARD TERMINAL ARRIVAL (STAR)

Bearings, headings, courses, tracks and radials are magnetic. Elevations and altitudes are in feet, MSL. Altitudes are minimum altitudes unless otherwise indicated.
Distances are in nautical miles (NM). Graphic depictions attached.

Arrival Name	Number	STAR Computer Code	Superseded Number	Dated	Effective Date
SERFR (RNAV)	THREE	SERFR.SERFR3	TWO	12/10/2015	

REMARKS:

ADDITIONAL FLIGHT DATA:

DME/DME ASSESSMENT: SAT (RNP 2.0)
REFERENCE MAGNETIC VARIATION = KSFO 14E/2015

FLIGHT INSPECTED BY:

Name	Organization	Date	Signature
------	--------------	------	-----------

DEVELOPED BY:

DEBORAH PRICE, SM	OAKLAND ARTCC	05/26/2017	Signature
Name	Organization	Date	Signature

APPROVED BY:

MARLON J. ROBINSON, MANAGER	AJV-5440	Date	Signature
Name	Organization	Date	Signature

CHANGES:

1. ADDED NARWL WP TO THE PROCEDURE (NORCAL TRACON).
2. MOVED EDDYY WP 3.04NM NORTH, NEW IAF, MAKING IT THE TERMINUS OF THE STAR (NORCAL TRACON).
3. REMOVED MENLO and SWELS FROM THE PROCEDURE (NORCAL TRACON).
4. REMOVED RUNWAY 28L/R RUNWAY TRANSITIONS (NORCAL TRACON).
5. REMOVED MEAs and MOCAs

REASONS:

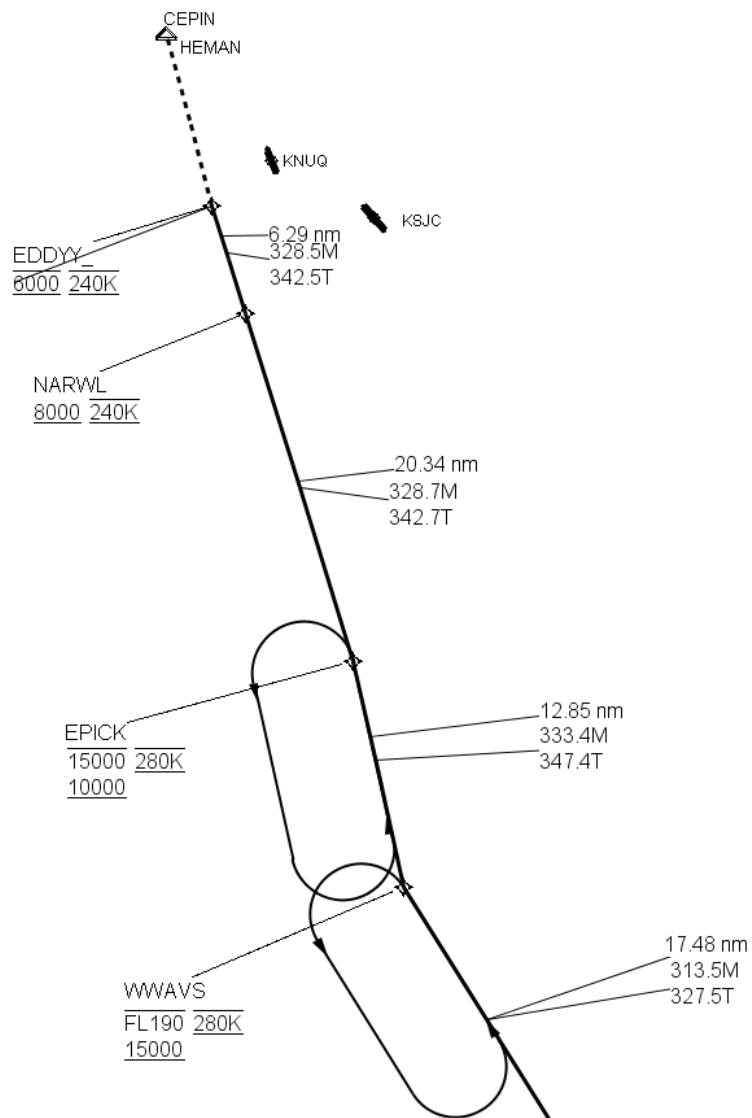
1. CLASS B CONTAINMENT.
2. CLASS B CONTAINMENT, NAME RETAINED FOR OPERATIONAL NECESSITY.
3. REVISING APPROACH PROCEDURES, WITH EDDYY AS NEW (IAF).
4. ATC REQUEST and A STAR CONSISTING OF A SINGLE PATH FROM AN ORIGINATION FIX TO A TERMINATION FIX WILL BE CODED AS A COMMON ROUTE (ARINC 424-18).
5. MEAs and MOCAs ARE NO LONGER ESTABLISHED WITHIN COMMON ROUTES.



FEDERAL AVIATION ADMINISTRATION
FLIGHT STANDARDS SERVICE
STANDARD TERMINAL ARRIVAL (STAR)

Bearings, headings, courses, tracks and radials are magnetic. Elevations and altitudes are in feet, MSL. Altitudes are minimum altitudes unless otherwise indicated.
Distances are in nautical miles (NM). Graphic depictions attached.

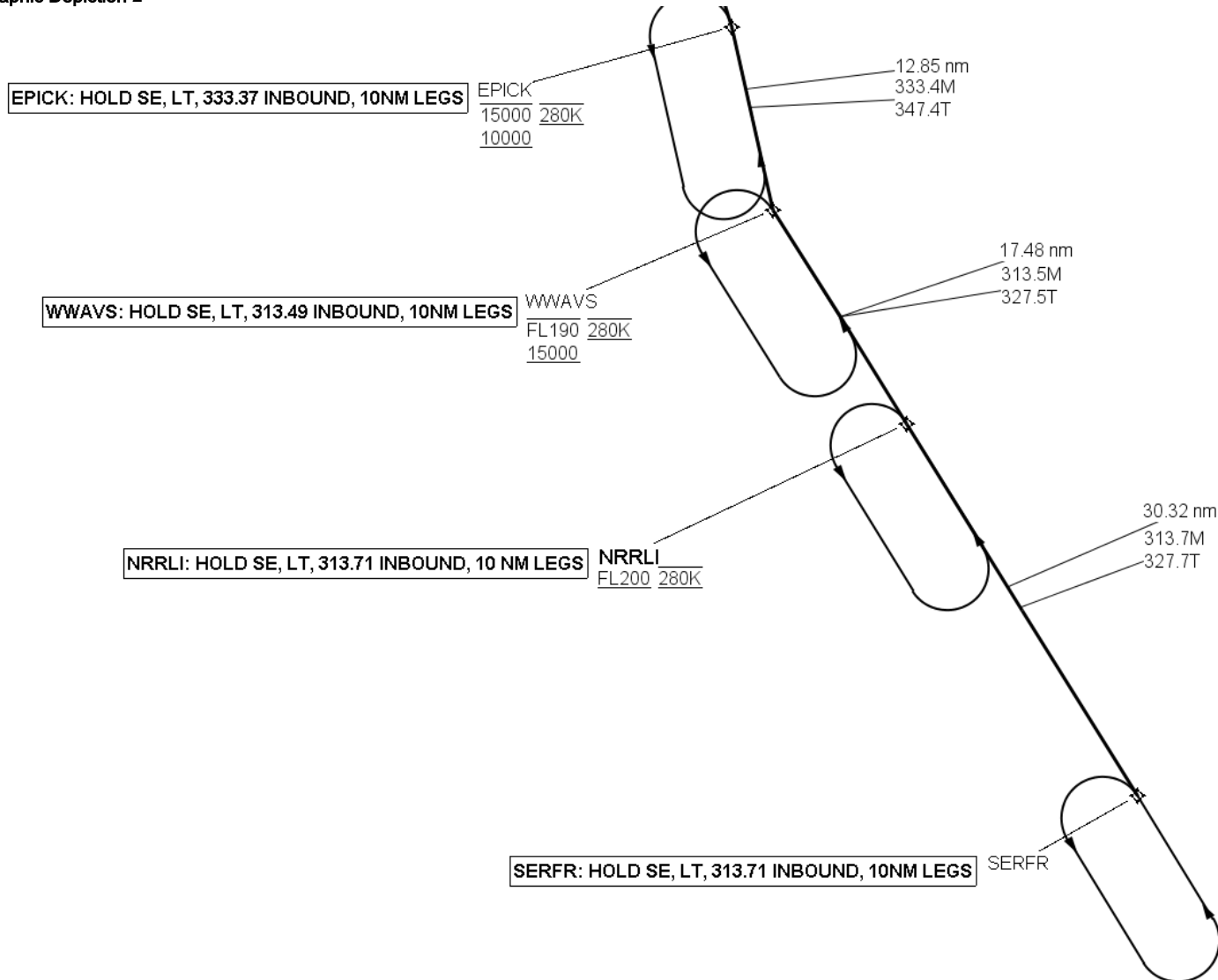
Arrival Name	Number	STAR Computer Code	Superseded Number	Dated	Effective Date
SERFR (RNAV)	THREE	SERFR.SERFR3	TWO	12/10/2015	
Graphic Depiction 1					



FEDERAL AVIATION ADMINISTRATION
FLIGHT STANDARDS SERVICE
STANDARD TERMINAL ARRIVAL (STAR)

Bearings, headings, courses, tracks and radials are magnetic. Elevations and altitudes are in feet, MSL. Altitudes are minimum altitudes unless otherwise indicated.
Distances are in nautical miles (NM). Graphic depictions attached.

Arrival Name	Number	STAR Computer Code	Superseded Number	Dated	Effective Date
SERFR (RNAV)	THREE	SERFR.SERFR3	TWO	12/10/2015	
Graphic Depiction 2					



FEDERAL AVIATION ADMINISTRATION
FLIGHT STANDARDS SERVICE
STAR (DATA RECORD)

Arrival Name SERFR (RNAV)	Number THREE		STAR Computer Code SERFR.SERFR3		Superseded Number TWO		Dated 12/10/2015	Effective Date	
FIX/NAVAID	LAT/LONG	C	FO/FB	LEG TYPE	TC	DIST (NM)	ALTITUDE	SPEED	REMARKS
Common Route									
SERFR	360405.90N / 1212152.79W	Y		IF					SERFR.SERFR3
NRRLI	362944.16N / 1214157.84W	Y	FB	TF	327.71	30.32	AT/ABOVE FL200	AT 280K	
WWAVS	364429.51N / 1215339.24W	Y	FB	TF	327.49	17.48	15000BFL190	AT 280K	
EPICK	365702.96N / 1215709.62W	Y	FB	TF	347.37	12.85	10000B15000	AT 280K	
NARWL	371629.21N / 1220445.46W	Y	FB	TF	342.66	20.34	AT/ABOVE 8000	AT 240K	
EDDYY	372229.65N / 1220707.50W	Y	FB	TF	342.54	06.29	AT 6000	AT 240K	

