

RNAV (RNP) Z RWY 1R

CHARLOTTE/DOUGLAS INTL (CLT)

APP CRS 003°	Rwy Ldg 10000 TDZE 707 Apt Elev 748
------------------------	--

RNP AR APCH - GPS.

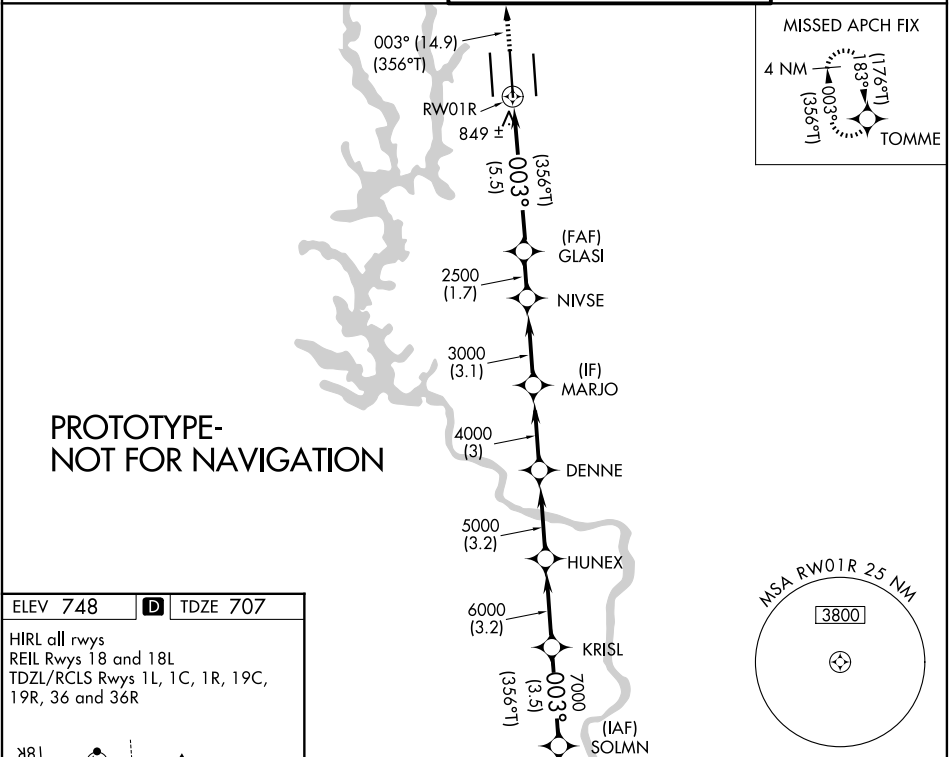
Simultaneous approach authorized. Use of FD or AP required during simultaneous operations. For uncompensated Baro-VNAV systems, procedure NA below -7°C or above 54°C. For inop ALS, increase RNP 0.30 visibility all Cats to 1½ SM.

ALSF-2



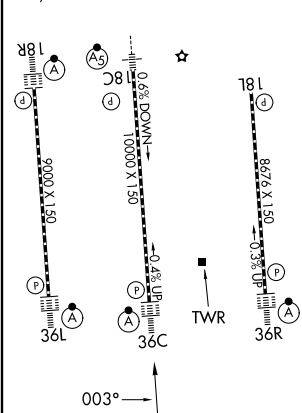
MISSED APPROACH: Climb to 3000 on track 003° to TOMME and hold.

CHARLOTTE APP CON		CHARLOTTE TOWER		GND CON
128.325 (001°-119°)	257.2 (180°-359°)	118.1 257.8 (Rwys 18L-36R)	126.4 257.8 (Rwy 18C-36C)	121.8 348.6 (W)
120.05 (120°-295°)	307.8 (360°-179°)	133.35 257.8 (Rwy 18R-36L)		121.9 348.6 (E)



ELEV 748	D	TDZE 707
----------	----------	----------

HIRL all rwys
REIL Rwys 18 and 18L
TDZL/RCLS Rwys 1L, 1C, 1R, 19C,
19R, 36 and 36R



3000	tr 003°	TOMME	VGSi and RNAV glidepath not coincident (VGSi Angle 3.00/TCH 72).					KRISL	SOLMN
			GLASI	NIVSE	MARJO	DENNE	HUNEX	8000	
			2500	3000	4000	5000	6000	7000	
			5.5 NM	1.7 NM	3.1 NM	3 NM	3.2 NM	3.2 NM	
								GP 3.00° TCH 54	
CATEGORY			A	B			C	D	
RNP 0.11 DA				1134/40			427 (400-¾)		
RNP 0.30 DA				1180/50			473 (500-1)		

AUTHORIZATION REQUIRED