

Flight Procedures Cover Page	Task Action: FLIGHT CHECK	Task Type: IAP	Estimated Chart Date: 12/26/2024	APWS Task ID: 22F03CADBE8E437D89786B6A3DA23371	APWS Project ID: 905B2A81DCA1462CB48C14ADD3AAD702
Procedure: RNAV (GPS) RWY 11 ORIG		Enroute: NO	Specialist: Campbell, Richard		Agreement Number:
Airport ID: KKIC			Airport City: KING CITY		State: CA
Facility ID:	Facility Type:	Flight Inspection Remark Type: New FC Slot			
<p>Procedure Comments:</p> <p>PENDING AIRPORT DATA USED.</p> <p>CONTACT ALLAN WILL 405.954.6103</p> <p>07/30/2024: THIS IS AN UPDATED COPY OF THE FORM DEVELOPED ON 09/08/2022.</p> <p>1. NOTES: CHANGE CHART NOTE FROM USE KING CITY ALTIMETER SETTING, WHEN NOT RECEIVED, USE SALINAS MUNI ALTIMETER SETTING AND INCREASE ALL MDA 140 FT. INCREASE VISIBILITY LP CAT C 1/4 SM, AND LNAV CAT C 3/8 SM TO USE MRY ALTIMETER SETTING; WHEN NOT RECEIVED, USE SNS ALTIMETER SETTING AND INCREASE ALL MDAS 20 FEET.</p> <p>2. ADDITIONAL FLIGHT DATA: CHANGE CHART FROM MEE MEML HOSPITAL AWOS TO MRY ASOS.</p> <p>3. MINIMUMS: LP CHANGED FROM MDA/HAT 660/287 ALL CATS TO 780/407 ALL CATS AND CAT C VIS CHANGED FROM 1 TO 1 1/8.</p> <p>4. MINIMUMS: LNAV CHANGED FROM MDA/HAT 740/367 ALL CATS TO 860/487 ALL CATS AND VIS CHANGED CAT C 1 TO 1 3/8.</p> <p>5. CHANGED MAPS TO REFLECT CURRENT OBSTRUCTIONS.</p> <p>10/29/2024: THIS IS A CORRECTED COPY OF THE FORM DEVELOPED ON 09/08/2022.</p> <p>1. PROFILE LINE 3: UPDATED "DIST FAF TO MAP" FROM 6.02 TO 6.93 AND "DIST FAF TO THLD" FROM 6.02 TO 6.93.</p>					

QUALITY
33
CHECKED

QUALITY
19
CHECKED

FIPC BASIC FORM						
PROCEDURE: RNAV (GPS) RWY 11 ORIG			AIRPORT NAME: MESA DEL REY		AIRPORT ID: KKIC	SPECIAL CONTROL NO: SG-08-035-24
FAC ID: KKIC11		CITY: KING CITY			ST: CA	ORIG CHART DATE: 10/31/2024
DFL TYPE: PROC/W	THIRD PARTY: <input type="checkbox"/> YES	EST. TIME ON SITE: 0.4	REIMB. NUMBER:	PTS TASK ID: 22F03CADBE8E437D89786B6A3DA23371		
PREFLIGHT NOTES						
REVIEWER:					DATE:	
COMMENTS:					CHECK ONE:	
					<input type="checkbox"/> FLT CK REQ <input type="checkbox"/> NFCR <input type="checkbox"/> REJECT	
					<div style="display: flex; justify-content: space-between; width: 100%;"> YES NO </div>	
					CPV COMPLETE?	
					X	
PROCEDURE RESULTS						
INSPECTION DATE: 10/02/2024	CREW #: VN570	N #: N79	INSTRUMENT PROCEDURE STATUS: <input checked="" type="checkbox"/> SAT <input type="checkbox"/> SAT W/CHANGES <input type="checkbox"/> UNSAT		ARINC CODING: <input checked="" type="checkbox"/> SAT <input type="checkbox"/> SAT/GOLD <input type="checkbox"/> UNSAT	
FLIGHT INSPECTOR SIGNATURE: kevin y cheng @ 10/03/2024 01:23			PRINTED NAME: CHENG, KEVIN YI			NOTAM INITIATED? <input type="checkbox"/> YES <input checked="" type="checkbox"/> NO
FLIGHT INSPECTOR REMARKS: Mesa Del Rey, King City, CA, Commissioning complete SAT. This is a continuation of inspections begun 06/15-16/2022, 08/08/2023, 10/12/2023, and 09/17/2024. AWOS for both SNS and MRY checked SAT for reception at RANCK IAF and FEARS IAF at 4,900 FT. Runway edge lights for RWY 11 (yellow last 2000') checked SAT. FAS obstacles checked with raised LP MDA and VDA checked SAT. Old figure was in procedure packet. Recommend an updated (-S) figure to match the updated -F with the following changes: 1) Update to include airport diagram. 2) Change chart notes to "USE MRY ALITMETER SETTING; WHEN NOT RECEIVED, USE SNS ALTIMETER SETTING AND INCREASE ALL MDAS 20 FEET". 3) Change primary ASOS from 09CA AWOS-AV to KSNS AWOS. 4) Update minimums for LP MDA All CATs to 780-1 and LNAV MDA All CATs to 860-1.						
IN-FLIGHT OBSTACLE REPORT						
OBSTRUCTION ID #:	COORDINATES OR LOCATION:	GNSS ALTITUDE (MSL):	BAROMETRIC ALTITUDE (MSL):	HEIGHT ABOVE GROUND LEVEL:		

KING CITY, CALIFORNIA

AL-9936 (FAA)

FIG

WAAS CH 53544 W11A	APP CRS 115°	Rwy Idg TDZE Apt Elev	4479 373 374
--	------------------------	-----------------------------	---

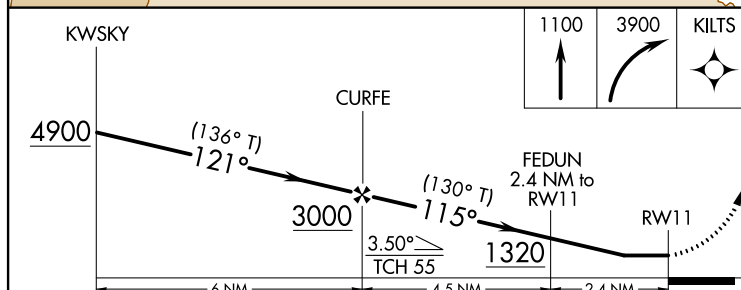
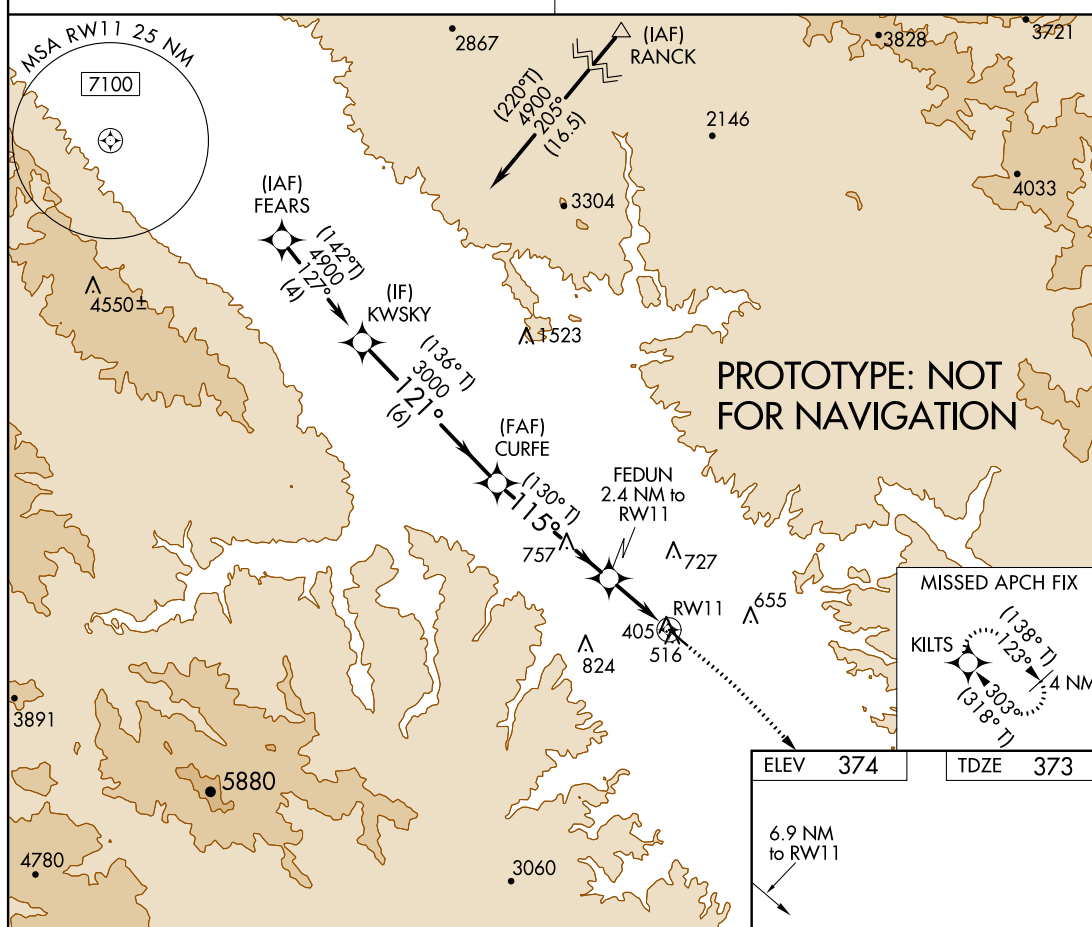
RNAV (GPS) RWY 11

MESA DEL REY (KIC)

RNP APCH - GPS.	MISSED APPROACH: Climb to 1100 then climbing right turn to 3900 direct KILTS and hold.
<p>▼ Rwy 11 helicopter visibility reduction below 1 SM NA. Use King City altimeter setting, when not received, use Salinas Muni altimeter setting and increase all MDA 140 feet. Increase visibility LP Cat C ¼ SM, and LNAV Cat C ⅜ SM.</p>	

09CA AWOS-AV
120.8

(CTAF)
122.90



CATEGORY	A	B	C	D
LP MDA	660-1	287 (300-1)		NA
LNAV MDA	740-1	367 (400-1)		NA

MIRL Rwy 11/29
REIL Rwy 29

AUTOMATED AL-363 RNAV (GPS) RWY 11
AUTOMATED AL-363 RNAV (GPS) RWY 11

SW-2

2 MAY 2022

COMPILER: CG

REVIEWER:

DBL CHKR:

EFF DATE: FIG

KING CITY, CALIFORNIA
Orig FIG

36°14'N-121°07'W

MESA DEL REY (KIC)
RNAV (GPS) RWY 11

