

Flight Procedures Cover Page	Task Action: Cancellation	Task Type: IAP	Estimated Chart Date: 05/14/2026	APWS Task ID: 22FBDA232C8E4476847F6A13982C21B3	APWS Project ID: 16AD7CD3F9FC4A0AB3D93AD6BDE7F70A
Procedure: VOR-A AMDT 4A		Enroute: NO	Specialist: Dunn, Timothy		Agreement Number:
Airport ID: KBKN			Airport City: BLACKWELL		State: OK
Facility ID: PER	Facility Type: VORTAC	Flight Inspection Remark Type:			

Procedure Comments:
Contact Robert Hamilton 405-954-4608.

QUALITY
8
CHECKED



BLACKWELL, OKLAHOMA

AL-6496 (FAA)

21196

VORTAC PER 113.2 Chan 79	APP CRS 263°	Rwy Idg TDZE Apt Elev	N/A N/A 1030
--	------------------------	-----------------------------	---

VOR-A

BLACKWELL-TONKAWA MUNI (BKN)



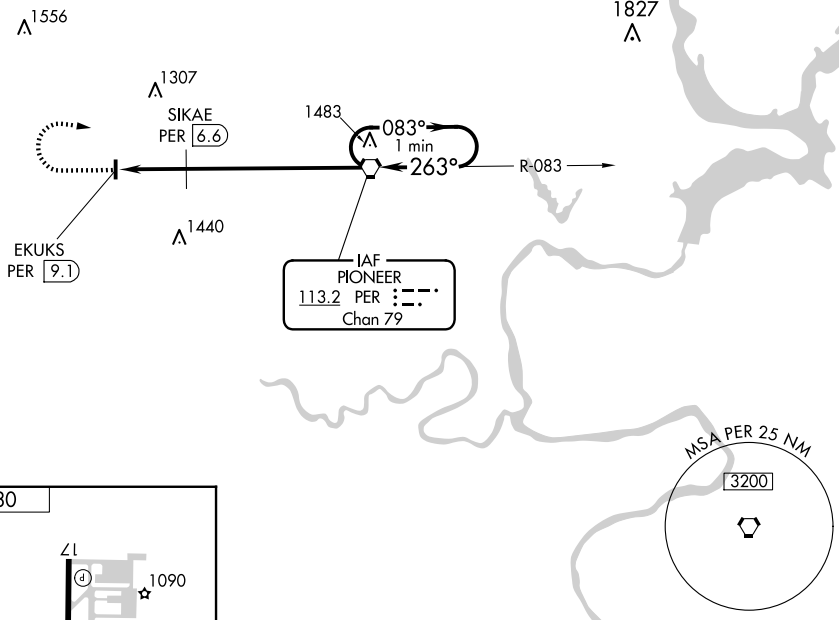
When local altimeter setting not received, use Ponca City altimeter setting and increase all MDA 40 feet.

MISSED APPROACH: Climb to 2800 then right turn direct PER VORTAC and hold.

AWOS-3PT
120.575

KANSAS CITY CENTER
127.8 319.1

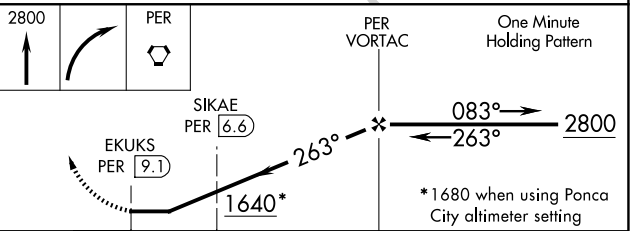
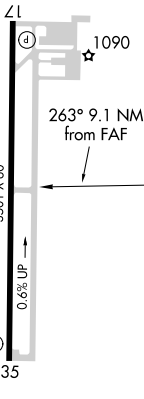
UNICOM
122.8 (CTAF) **0**



SC-1, 02 OCT 2025 to 30 OCT 2025

SC-1, 02 OCT 2025 to 30 OCT 2025

ELEV 1030



MIRL Rwy 17-35 0 35	FAF to MAP 9.1 NM				
Knots	60	90	120	150	180
Min:Sec	9:06	6:04	4:33	3:38	3:02

CATEGORY	A	B	C	D
CIRCLING	1640-1	610 (700-1)	1640-1 ³ / ₄ 610 (700-1 ³ / ₄)	NA
SIKAE FIX MINIMUMS				
CIRCLING	1440-1 410 (500-1)	1480-1 450 (500-1)	1620-1 ³ / ₄ 590 (600-1 ³ / ₄)	NA

BLACKWELL, OKLAHOMA
Amdt 4A 15JUL21

36°45'N-97°21'W

BLACKWELL-TONKAWA MUNI (BKN)
VOR-A