

Flight Procedures Cover Page	Task Action: P-NOTAM	Task Type: IAP	Estimated Chart Date: 07/09/2026	APWS Task ID: 2366BEFD65B04A2DA9182021CA7D6B2B	APWS Project ID: 069A674822C54D6083607D36975D0206
Procedure: RNAV (GPS) RWY 9 AMDT 1B		Enroute: NO	Specialist: Johnson, Timothy		Agreement Number:
Airport ID: KBGE			Airport City: BAINBRIDGE		State: GA
Facility ID:	Facility Type:	Flight Inspection Remark Type:			

**Procedure Comments:**

Visibility Initiative (Garmin) - Update IAP visibility minimums IAW Order 8260.3, Chapter 3, Section 3-3. Visibility Minimums.

PROCESSED IAW TECHNICAL SUPPORT GROUP (AJF-17) MEMO DATED 07/07/2021, SUBJECT: GUIDANCE FOR PROCEDURAL CHANGES REQUIRING FLIGHT INSPECTION/VALIDATION.

CONTACT: CASEY HILL (405) 954-0624.

QUALITY  
6 SN 3/2/26  
CHECKED

QUALITY  
38  
CHECKED

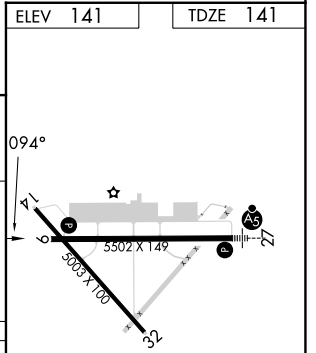
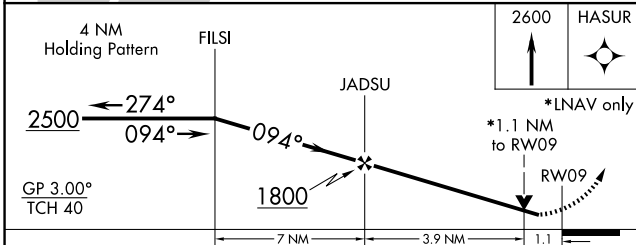
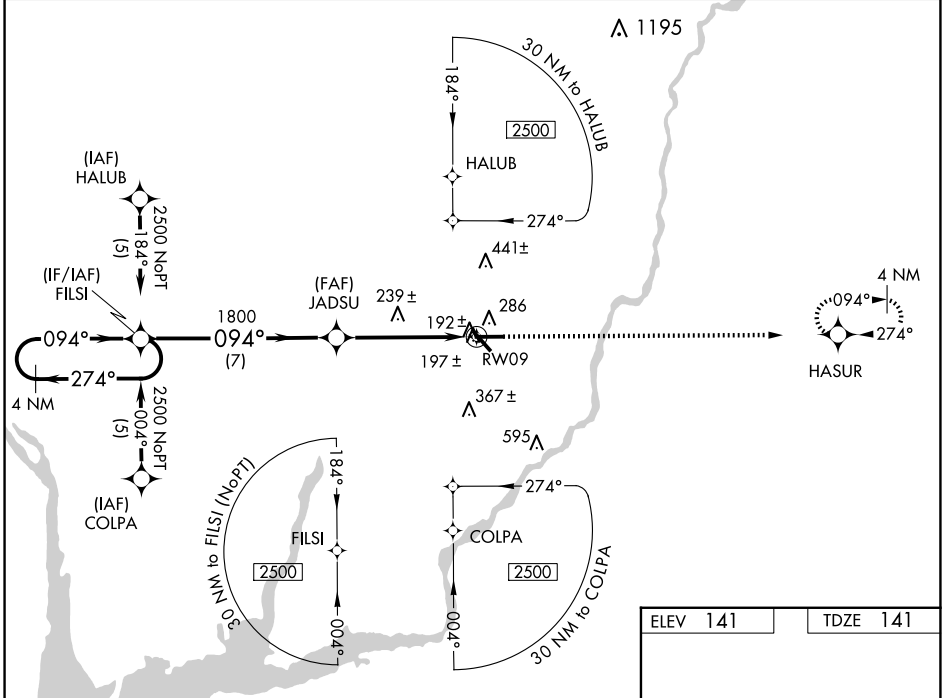
WAAS CH <b>45915</b> W09A	APP CRS <b>094°</b>	Rwy Idg <b>5502</b> TDZE <b>141</b> Apt Elev <b>141</b>
---------------------------------	------------------------	---

**RNAV (GPS) RWY 9**  
DECATUR COUNTY INDUSTRIAL AIR PARK (BGE)

**⚠** For uncompensated Baro-VNAV systems, LNAV/VNAV NA below -1.5°C (5°F) or above 48°C (118°F).  
**⚠** DME/DME RNP-0.3 NA. Visibility reduction by helicopters NA. VDP and Baro-VNAV NA when using Tallahassee Intl altimeter setting. When local altimeter setting not received, use Tallahassee Intl altimeter setting and increase LPV DA to 522 feet and LNAV/VNAV DA to 562 feet; increase all MDAs 100 feet and increase LPV DA to 522 feet and LNAV/VNAV all Cats and LNAV Cat C, D visibility 1/4 SM and Circling Cat C, D visibility 1/2 SM.

**MISSED APPROACH:**  
Climb to 2600 direct HASUR and hold.

AWOS-3PT <b>121.125</b>	TALLAHASSEE APP CON* <b>128.7 254.3</b>	CLNC DEL <b>124.775 335.65</b>	UNICOM <b>122.975</b> (CTAF)
----------------------------	--	-----------------------------------	---------------------------------



CATEGORY	A	B	C	D
LPV DA	427-1 286 (300-1)			
LNAV/VNAV DA	467-1¼ 326 (400-1¼)			
LNAV MDA	540-1 399 (400-1)		540-1¼ 399 (400-1¼)	
CIRCLING	600-1	459 (500-1)	800-1¾ 659 (700-1¾)	860-2¼ 719 (800-2¼)

HIRL Rwy 9-27

SE-4, 19 FEB 2026 to 19 MAR 2026

SE-4, 19 FEB 2026 to 19 MAR 2026