

Flight Procedures Cover Page	Task Action: Abbreviated Amendment	Task Type: IAP	Estimated Chart Date: 06/12/2025	APWS Task ID: 2391933E4D45407CAA4739CC2B5F93B9	APWS Project ID: 836C6BF0ECD643219DE8A025358B89BA
Procedure: LOC RWY 35 AMDT 6C		Enroute: NO	Specialist: Gonzales, Emmanuel		Agreement Number:
Airport ID: KCKV			Airport City: CLARKSVILLE		State: TN
Facility ID: CKV	Facility Type: LOC	Flight Inspection Remark Type:			

**Procedure Comments:**

ACTIVE DATA USED FOR KCKV ARPT, RWYS AND CKV LOC.

CANCELS NOTAM FDC 4/7811.

PROCESSED IAW TECHNICAL SUPPORT GROUP (AJF-17) MEMO DATED 07/07/2021 GUIDANCE FOR PROCEDURAL CHANGES REQUIRING FLIGHT INSPECTION/VALIDATION.

CONTACT: ROBERT HAMILTON (AJV-A433) 405-954-4608.



LOC I-CKV <b>111.7</b>	APP CRS <b>347°</b>	Rwy ldg TDZE Apt Elev	<b>5999</b> <b>550</b> <b>550</b>
---------------------------	------------------------	-----------------------------	---

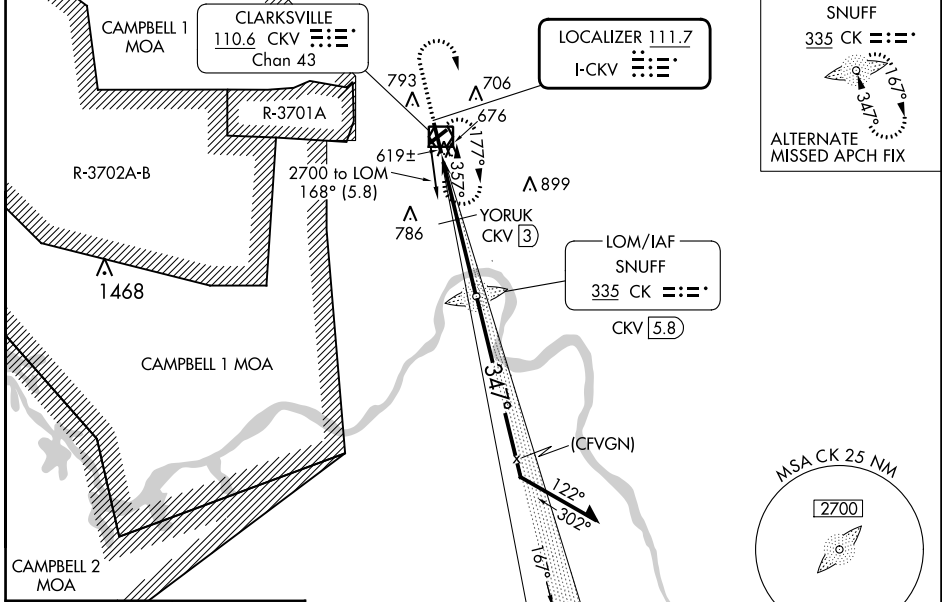
OLD

# LOC RWY 35

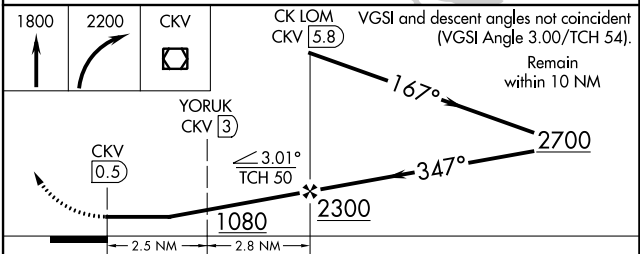
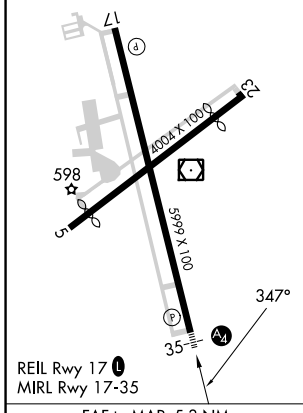
OUTLAW FLD (CKV)

ADF required. RADAR required.	MALS 	MISSED APPROACH: Climb to 1800 then climbing right turn to 2200 direct CKV VOR/DME and hold.
----------------------------------	----------	---

ASOS <b>134.575</b>	CAMPBELL APP CON <b>134,35 307,025</b>	UNICOM <b>122.8 (CTAF) 0</b>
------------------------	---	---------------------------------



ELEV 550	<b>D</b>	TDZE 550
----------	----------	----------



CATEGORY	A	B	C	D
S-LOC 35	1080-3/4	530 (600-3/4)	1080-1 1/4	530 (600-1 1/4)
<b>C</b> CIRCLING	1080-1	530 (600-1)	1080-1 1/2	1200-2
			530 (600-1 1/2)	650 (700-2)
YORUK FIX MINIMUMS * (DME REQUIRED)				
S-LOC 35		880-3/4	330 (400-3/4)	
<b>C</b> CIRCLING	1000-1	1020-1	1020-1 1/2	1200-2
	450 (500-1)	470 (500-1)	470 (500-1 1/2)	650 (700-2)

Knots	60	90	120	150	180
Min:Sec	5:18	3:32	2:39	2:07	1:46

SE-1, 28 NOV 2024 to 26 DEC 2024

SE-1, 28 NOV 2024 to 26 DEC 2024