

Flight Procedures Cover Page	Task Action: Abbreviated Amendment	Task Type: IAP	Estimated Chart Date: 09/05/2024	APWS Task ID: 23AC759DC1A44B9DB3884EC50C14C334	APWS Project ID: 2843C4442BBD40EBAD4185C4CF19C4D9
Procedure: HI - VOR Z OR TACAN Z RWY 15 AMDT 4B		Enroute: NO	Specialist: Armentrout, Britney		Agreement Number:
Airport ID: KCHS			Airport City: CHARLESTON		State: SC
Facility ID:	Facility Type:	Flight Inspection Remark Type:			

Procedure Comments:

PROCEDURE NAME CHANGED FROM HI - VOR OR TACAN RWY 15 TO HI - VOR Z OR TACAN Z RWY 15.

ACTIVE AIRNAV DATA USED.

PROCESSED IAW TECHNICAL SUPPORT GROUP (AJF-17) MEMO DATED 07/07/2021, SUBJECT: GUIDANCE FOR PROCEDURAL CHANGES REQUIRING FLIGHT INSPECTION/VALIDATION.

CONTACT RAKE MCGRAW AJV-A422.



OLD

HI-VOR or TACAN RWY 15

VORTAC CHS 113.5 Chan 82	APCH CRS 157°	Rwy ldg TDZE Arprt Elev 9001 43 46
--	-------------------------	--

[USAF]

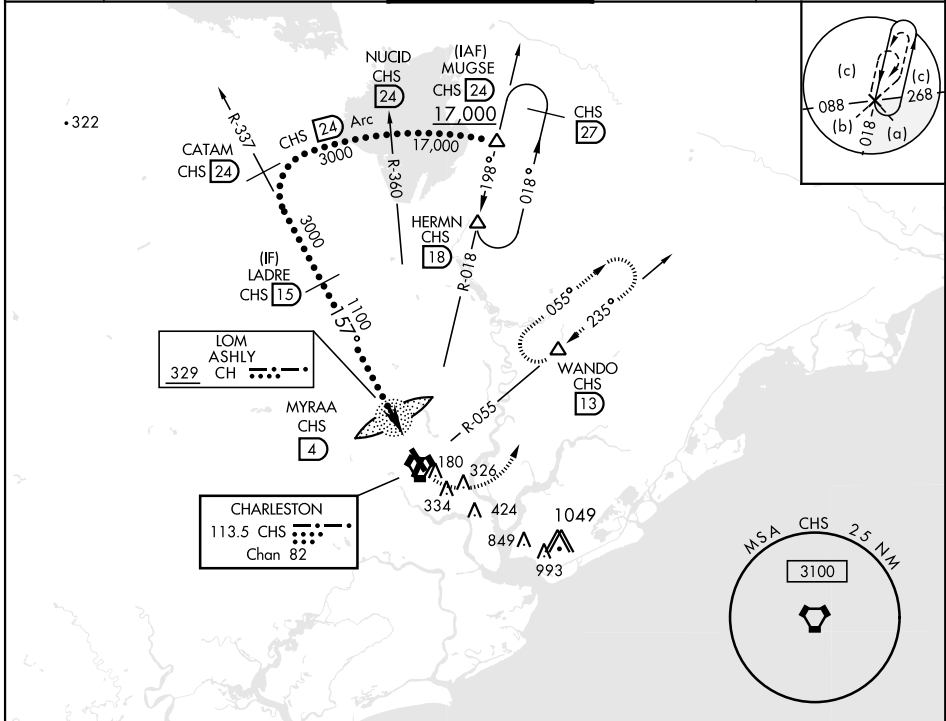
CHARLESTON AFB/INTL (KCHS)

DME required

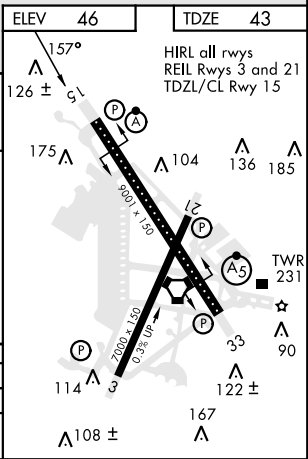
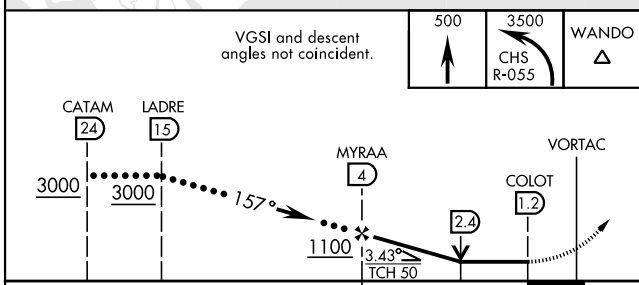
ALSF-2

MISSED APPROACH: Climb to 500 then climbing left turn to 3500 on CHS VORTAC R-055 to WANDO/CHS 13 DME and hold, continue climb-in-hold to 3500.

ATIS 124.75	APP CON 120.7 306.925 (151° - 330°) 121.275 379.925 (331° - 150°)	TOWER 126.0 239.0	GND CON 121.9 348.6	CLNC DEL 127.325 291.65
-----------------------	---	-----------------------------	-------------------------------	-----------------------------------



EMERG SAFE ALT 100 NM 3200



CATEGORY	C	D	E
S-15*	460/40	417	(500-3)
CIRCLING	540-1½ 494 (500-1½)	740-2¼ 694 (700-2¼)	740-2½ 694 (700-2½)

HI-VOR or TACAN RWY 15

SE-2, 22 FEB 2024 to 21 MAR 2024

SE-2, 22 FEB 2024 to 21 MAR 2024