

Flight Procedures Cover Page	Task Action: Cancellation	Task Type: IAP	Estimated Chart Date: 05/14/2026	APWS Task ID: 24B1AB45ADE74214B2A7A19704B0623E	APWS Project ID: 0E24F737755045BEA8F7B516FB17A39A
Procedure: VOR RWY 6 AMDT 13F		Enroute: NO	Specialist: Ferreira, Giorgia		Agreement Number:
Airport ID: KARB			Airport City: ANN ARBOR		State: MI
Facility ID: SVM	Facility Type: VORTAC	Flight Inspection Remark Type:			

Procedure Comments:  
POC: ROBERT HAMILTON AJV-A433 405-954-4608.



VORTAC SVM <b>114.3</b> Chan <b>90</b>	APP CRS <b>035°</b>	Rwy Idg TDZE <b>3505</b> <b>831</b> Apt Elev <b>839</b>
--	------------------------	---

OLD

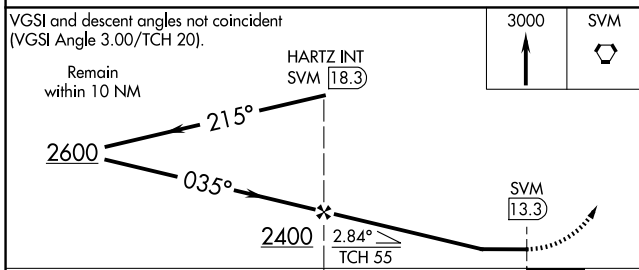
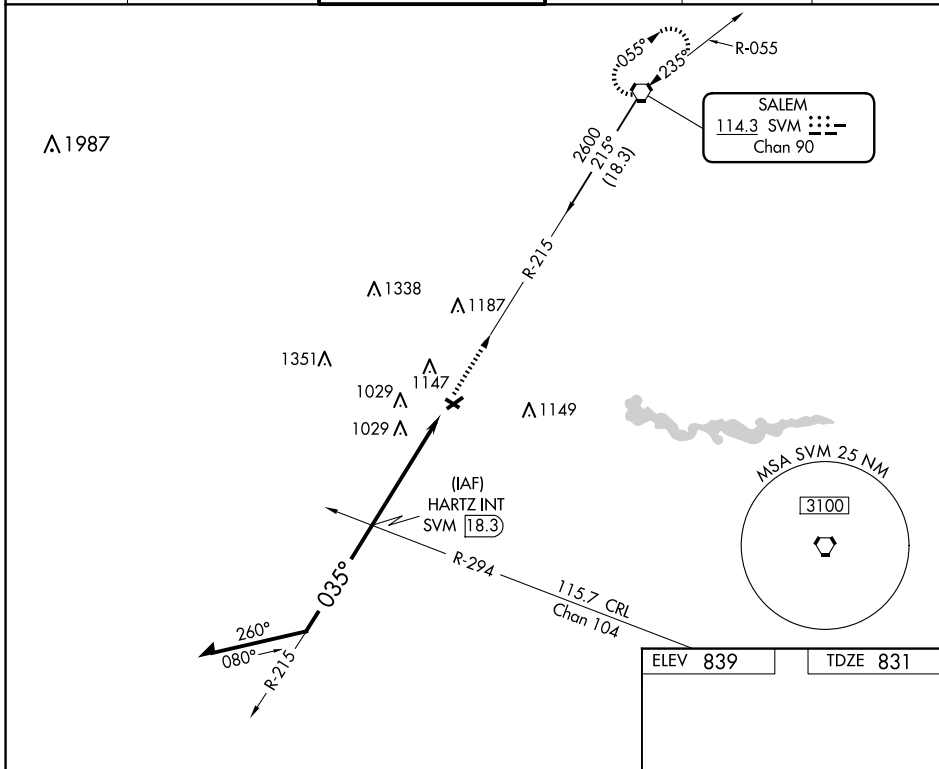
# VOR RWY 6

ANN ARBOR MUNI (A.R.B.)

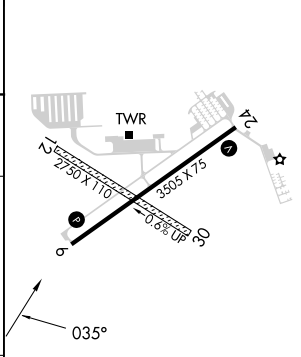
▼ When local altimeter setting not received, use Willow Run altimeter setting and increase all MDA 40 feet and Cat C/D visibility 1/8 mile and Circling Cat C/D visibility 1/4 mile.  
 ▲ Rwy 6 helicopter visibility reduction below 3/4 SM NA. Circling NA to Rwy 12 and 30.

MISSED APPROACH: Climb to 3000 direct SVM VORTAC and hold.

ATIS <b>134.55</b>	DETROIT APP CON <b>118.95 284.0</b>	ANN ARBOR TOWER ★ <b>120.3</b> (CTAF) <b>0</b>	GND CON <b>121.6</b>	CLNC DEL <b>121.6</b>	UNICOM <b>123.0</b>
-----------------------	--	---	-------------------------	--------------------------	------------------------



ELEV 839	TDZE 831
----------	----------



CATEGORY	A	B	C	D
S-6	1360-1	529 (600-1)	1360-1½	529 (600-1½)
CIRCLING	1500-1	661 (700-1)	1500-1¾	1640-2½ 801 (900-2½)

FAF to MAP 5 NM					
Knots	60	90	120	150	180
Min:Sec	5:00	3:20	2:30	2:00	1:40

EC-1, 27 NOV 2025 to 25 DEC 2025

EC-1, 27 NOV 2025 to 25 DEC 2025