

COPTER RNAV (GPS) M 139°

MANSFIELD MUNI (1B9)

WAAS CH 77947 W14B	APP CRS 139°	Rwy Ldg Sfc Elev Apt Elev	N/A 154 121
--	------------------------	---------------------------------	--

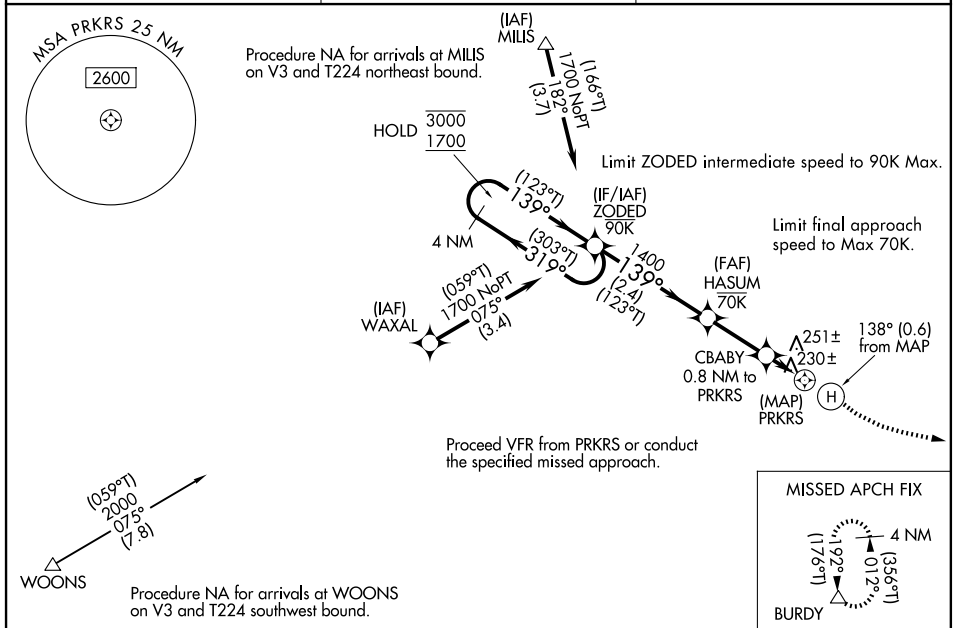
RNP 0.30 - GPS, AP.

▼ Night visibility minimum 1 SM. When local altimeter setting not received, use OWD altimeter setting and increase all MDAs 40 feet. Use of this procedure requires specific authorization by FAA Flight Standards.

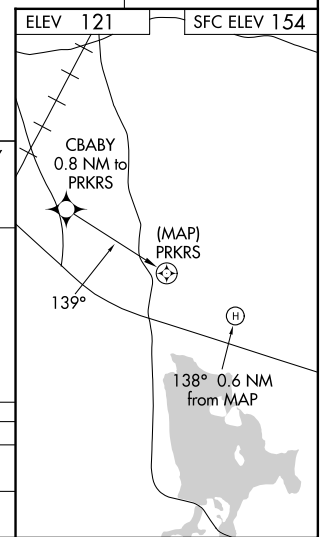
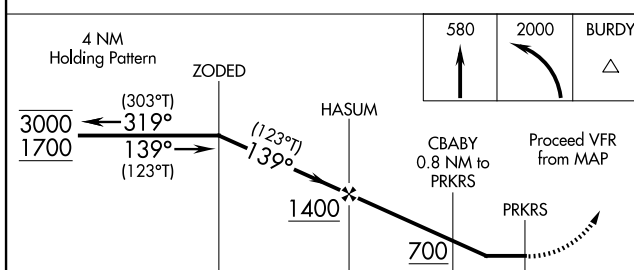
▲ NA

MISSED APPROACH: Climb to 580 then climbing left turn to 2000 direct BURDY and hold.

AWOS-3PT 118.675	BOSTON APP CON 124.1	UNICOM 123.0 (CTAF) 0
----------------------------	--------------------------------	---------------------------------



PROTOTYPE-NOT FOR NAVIGATION



CATEGORY		COPTER	
LP	MDA	480- ³ / ₄	326 (400-1)
LNAV	MDA	540- ³ / ₄	386 (400-1)