

Flight Procedures Cover Page	Task Action: FLIGHT CHECK	Task Type: IAP	Estimated Chart Date: 05/14/2026	APWS Task ID: 260A1E6CB8FF488BAE747426706CE1D0	APWS Project ID: 97EB680DBFB2404291433FCA14AADA4F
Procedure: RNAV (GPS) RWY 27 AMDT 1C		Enroute: NO	Specialist: Armentrout, Britney		Agreement Number:
Airport ID: KAHN			Airport City: ATHENS		State: GA
Facility ID:	Facility Type:	Flight Inspection Remark Type: New FC Slot			

Procedure Comments:
ACTIVE AIRNAV DATA USED.

CRC REMAINDER CHANGED FROM "08284695" TO "CDCE598B"

CANCELS NOTAM FDC 5/0614.

ADDED VGSI AND RNAV GLIDEPATH NOT COINCIDENT NOTE AND UPDATED TO CURRENT CRITERIA.

CONTACT RAKE MCGRAW AJV-A422.

QUALITY
9
CHECKED
BEGUE

QUALITY
39
CHECKED

WAAS CH 69503 W27A	APP CRS 274°	Rwy Ldg 6122 TDZE 812 Apt Elev 812
--	------------------------	---

RNAV (GPS) RWY 27

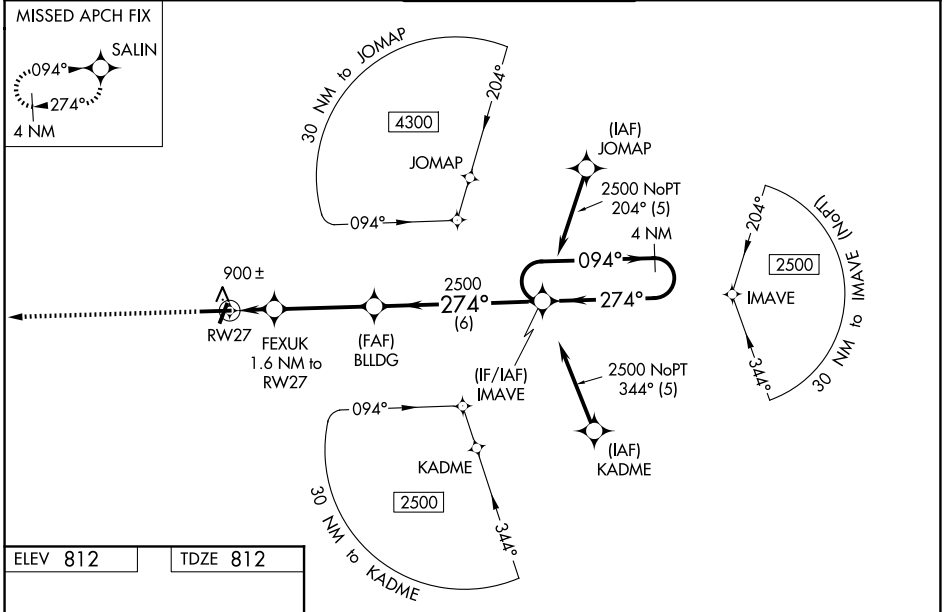
ATHENS/BEN EPPS (AHN)

RNP APCH - GPS.

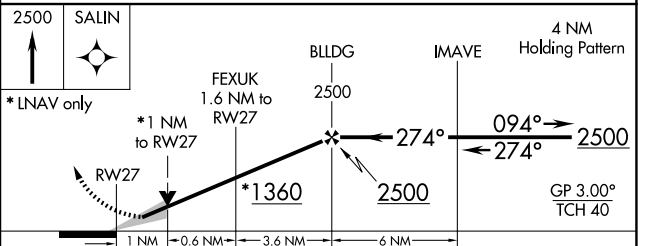
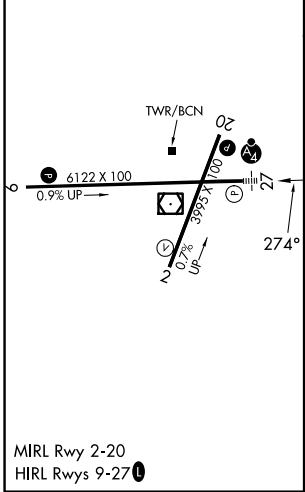
▼ For uncompensated Baro-VNAV systems, LNAV/VNAV NA below -9°C or above 54°C.
 ▲ When local altimeter setting not received, use Winder altimeter setting: increase LPV DA to 1071 feet; increase LNAV/VNAV DA to 1121 feet; increase all MDA 60 feet and increase LNAV Cat C/D visibility to 1 mile and Circling Cat D visibility to 2¼ mile. For inop MALSf, increase LNAV/VNAV all Cats visibility to 7/8 mile, increase LNAV Cat C/D visibility to 1 mile. For inop MALSf when using Winder altimeter setting increase LPV all Cats visibility to 7/8 mile, increase LNAV/VNAV all Cats visibility to 1 mile, increase LNAV Cat C, D visibility to 1 1/8 mile. Baro-VNAV and VDP NA when using Winder altimeter setting. Inop table does not apply to LPV. Circling Rwy 2, 20 NA at night.

MALSf MISSED APPROACH:
 Climb to 2500 direct SALIN and hold.

ASOS 132.875	ATLANTA APP CON * 132.475 291.1	ATHENS TOWER * 126.3 (CTAF) 338.275	GND CON 121.8	UNICOM 122.95
------------------------	---	---	-------------------------	-------------------------



ELEV 812	TDZE 812
-----------------	-----------------



CATEGORY	A	B	C	D
LPV DA		1012-3/4	200 (200-3/4)	
LNAV/VNAV DA		1064-3/4	252 (300-3/4)	
LNAV MDA		1160-3/4	348 (400-3/4)	
CIRCLING	1260-1 448 (500-1)	1280-1 468 (500-1)	1320-1 1/2 508 (600-1 1/2)	1460-2 648 (700-2)

SE-4, 02 OCT 2025 to 30 OCT 2025

SE-4, 02 OCT 2025 to 30 OCT 2025