

## DME DME Assessment Results for FATHE4 path KMCO:RW17L:DER\_KAAPE

### Results Summary

Flyability:	Completed
DME/DME:	Completed - No Critical DMEs
Name:	Mark CTR Thompson
Project File:	C:\Users\Mark CTR Thompson\OneDrive - Federal Aviation Administration\Desktop\RNAV Projects\RNAV Projects 2025\MCO SIDs\MCO FATHE SID\DME\KMCO FATHE4 (RNAV) SID DME_241105.tgs
Output File:	C:\Users\Mark CTR Thompson\OneDrive - Federal Aviation Administration\Desktop\RNAV Projects\RNAV Projects 2025\MCO SIDs\MCO FATHE SID\DME\KMCO [IFPA] FATHE4 20241105_0829 EST\KMCO-RW17L-DER_KAAPE\KMCO FATHE4 SID RW17L KAAPE 20241105_0829 EST.pdf
Procedure Name:	FATHE4
Software: DmeDmePlugin:	7.4.0
Date/Time:	11/05/2024 08:29 EST
Databases:	MITRE 3DEP 3 arcsec

### Failures

No Failures

### Warnings

No Warnings

### Informational

No Informational

### Notes For Flight Check

None

### Flight Plan

Name	Type	Lat/Lon	Altitude (ft)	VNAV Mode	Ground Speed (kts)	Turn Type	Leg Type
KMCO:RW17L:DER	WP	N28° 25' 08.20", W081° 16' 56.38"	89.7	VNAV	130	FLY_BY	TF
KAAPE	WP	N28° 20' 56.58", W081° 16' 05.60"	876.5	VNAV	200	FLY_BY	TF
Climb Gradient: 200.0 ft/NM							

### Flyability

Flight Type:	SID
Selected Airport:	KMCO [IFPA]
Climb Gradient:	200.0 ft/NM
Speeds:	130 at the Runway DER
	145 at the end of the VA or VI leg
	200 Ground Speed to 11000 FT
	240 Ground Speed to 18000 FT
	260 Ground Speed to 24000 FT
	340 Ground Speed above 24000 FT
Descent During a Turn:	Allowed
VNAV Mode:	Flight Plan

**DME DME Assessment Results for FATHE4 path KMCO:RW17L:DER\_KAAPE**

<b>DME/DME</b>	
RNP:	RNP 2
Flight Mode:	Manual
Line of Sight (DTED Level 0 Max):	Evaluated
Inertial Drift:	Enabled
Initial Drift:	0.558 NM
INS Drift Rate:	8.0 NM/Hour
Range Mode:	OSV
RNP Edges:	Evaluated
Min DME Range:	3.0 NM
DME Types:	DME, VOR-DME, VORTAC, TACAN
DME Include Angles:	30 to 150
Critical DMEs:	Allowed
DoD Facilities:	Included
Foreign Facilities:	Not included
High DMEs:	Included
Low DMEs:	Included
Terminal DMEs:	Included
Flight Check DMEs:	Not selected
Higher Altitudes:	Not Evaluated
Near Maximum Altitude:	Not Evaluated
Automatic ESVs:	Not enabled
Disabled DMEs:	None

**DME/DME (Continued)**

**DMEs Used**

#	Name	Lat/Lon	MAGVAR	Range	Type	Source	Critical	Status	Time	Distance
---	------	---------	--------	-------	------	--------	----------	--------	------	----------

**Flight Check DME Selection**

Distance [NM]	Selected DMEs	Alternate
0.0		

**Inertial Drift Segments**

#	Start Location	End Location	Length [NM]
1	N28° 25' 06.04", W081° 16' 56.36"	N28° 20' 56.58", W081° 16' 05.60"	4.2674

**Available DMEs by Waypoints**

Waypoint Before	Waypoint After	DME List	Suggested DMEs
KMCO:RW17L:DER	KAAPE		

**DME DME Assessment Results for FATHE4 path KMCO:RW17L:DER\_KAAPE**

**User Data Files**

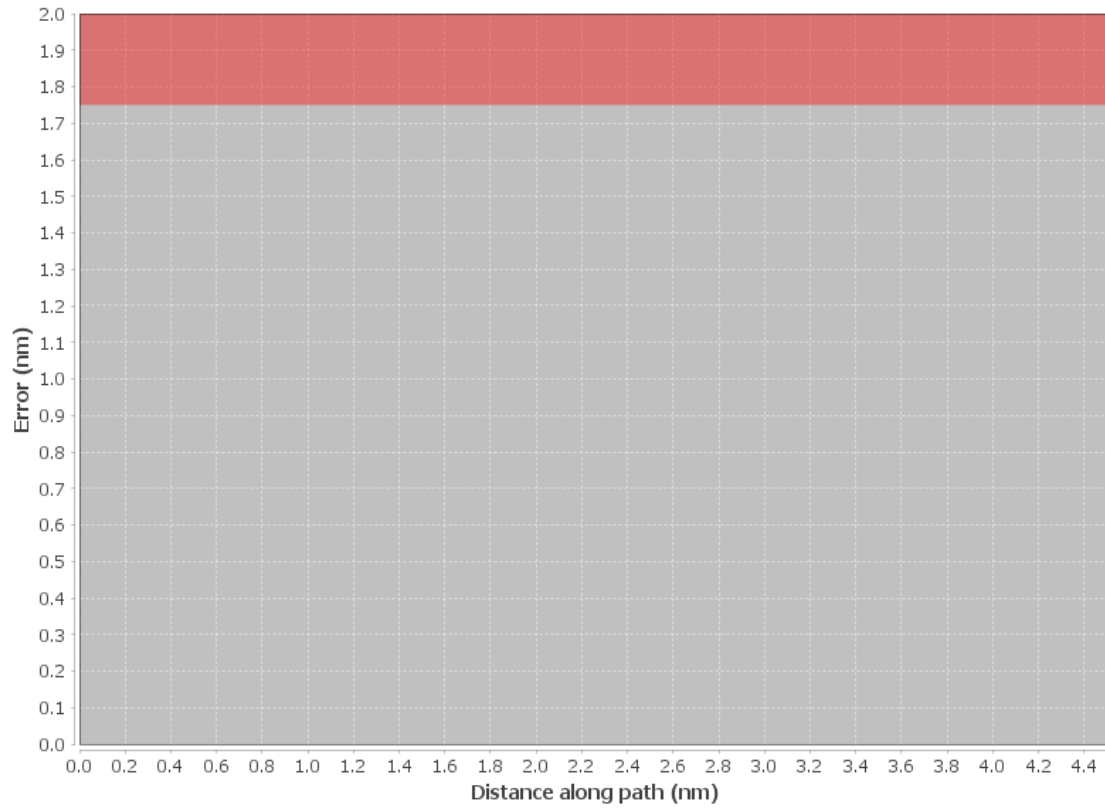
#	File Name
None	

None

**User DMEs**

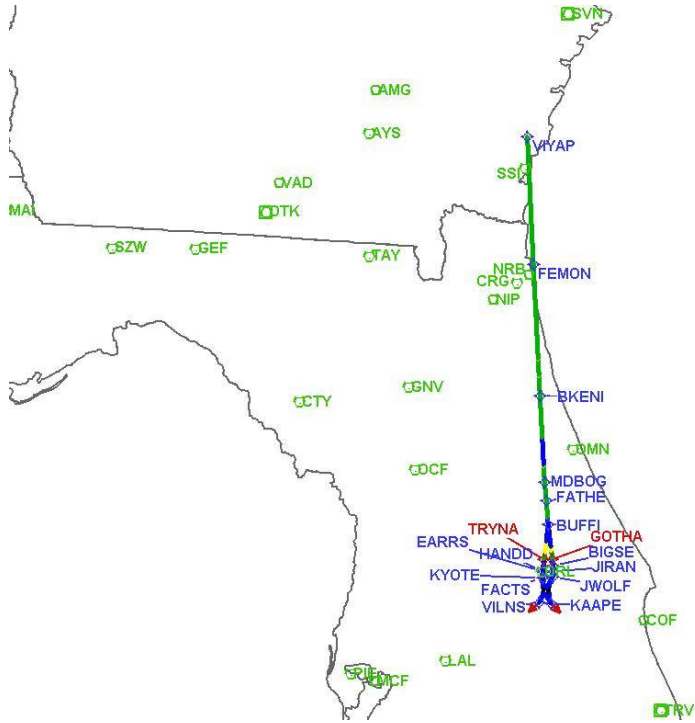
#	Name	Lat/Lon	MAGVAR	Range	Elevation [ft]	Frequency	Replaces	Status
1	OCF FAA 714002-32 OCF	N29° 10' 38.92", W082° 13' 34.80"	0.0 E	40	78.3	113.7	OCF FAA 714002-32	
	ESV:	Bearing [True]: 50.0° to 120.0° Bearing [Mag]: 50.0° to 120.0°				Arc Distance: Out to 80.0 NM Altitude: 5000.0 to 18000.0 ft		
2	GNV FAA 704230-48 GNV	N29° 41' 31.61", W082° 16' 22.70"	4.0 W	40	127.5	116.2	GNV FAA 704230-48	
	ESV:	Bearing [True]: 116.0° to 141.0° Bearing [Mag]: 120.0° to 145.0°				Arc Distance: Out to 72.0 NM Altitude: 5000.0 to 10200.0 ft		
3	LAL FAA 704224-41 LAL	N27° 59' 10.31", W082° 00' 50.06"	1.0 E	130	133.8	116.0	LAL FAA 704224-41	
	ESV:	Bearing [True]: 360.0° to 77.0° Bearing [Mag]: 359.0° to 76.0°				Arc Distance: Out to 70.0 NM Altitude: 3000.0 to 14700.0 ft		
4	OCF FAA 714002-18 OCF	N29° 10' 38.92", W082° 13' 34.80"	0.0 E	40	78.3	113.7	OCF FAA 714002-18	
	ESV:	Bearing [True]: 117.0° to 180.0° Bearing [Mag]: 117.0° to 180.0°				Arc Distance: Out to 80.0 NM Altitude: 4000.0 to 20000.0 ft		

### DME Error



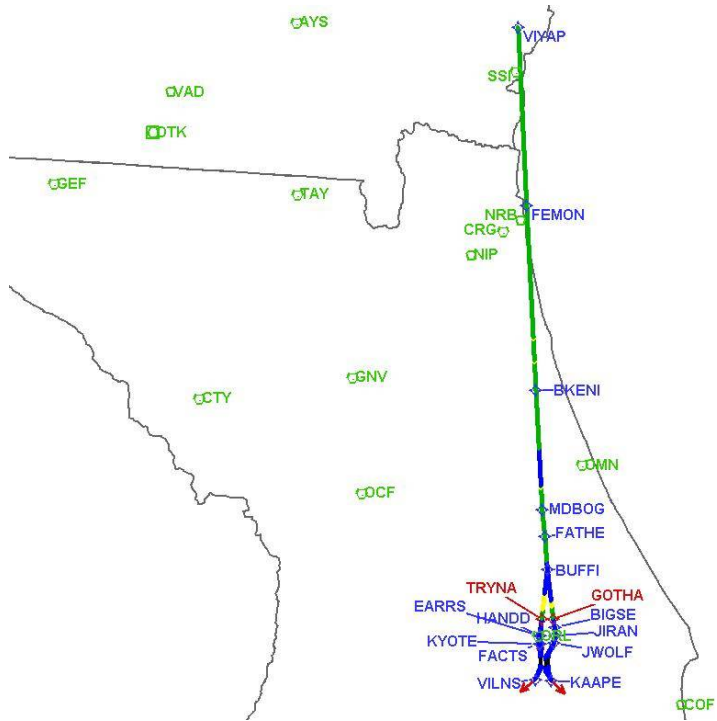
# DME DME Assessment Results for FATHE4 path KMCO:RW17L:DER\_KAAPE

Graphic Depiction 1



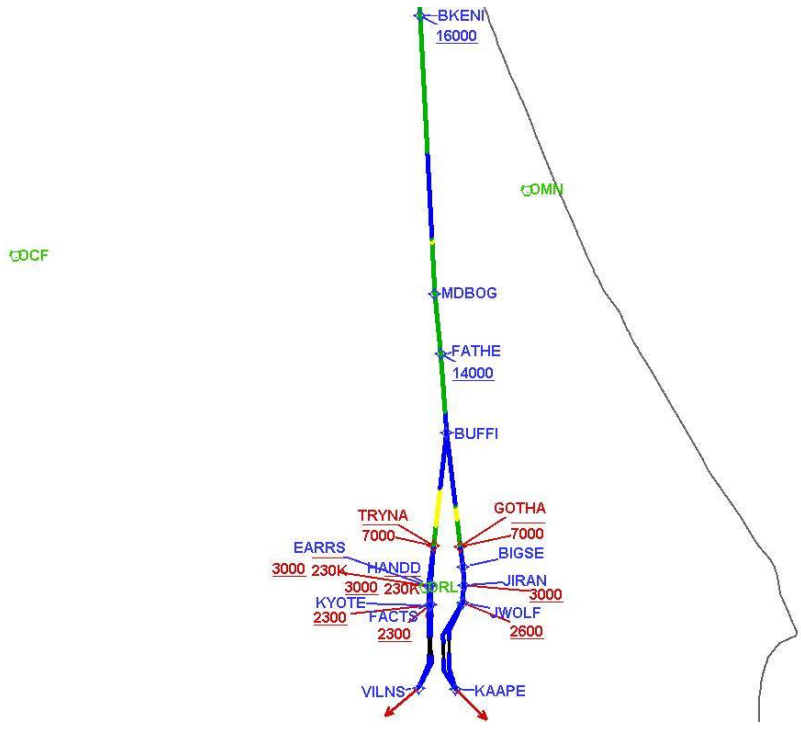
# DME DME Assessment Results for FATHE4 path KMCO:RW17L:DER\_KAAPE

Graphic Depiction 2



# DME DME Assessment Results for FATHE4 path KMCO:RW17L:DER\_KAAPE

Graphic Depiction 3



## DME DME Assessment Results for FATHE4 path KMCO:RW17R:DER\_KAAPE

### Results Summary

Flyability:	Completed
DME/DME:	Completed - No Critical DMEs
Name:	Mark CTR Thompson
Project File:	C:\Users\Mark CTR Thompson\OneDrive - Federal Aviation Administration\Desktop\RNAV Projects\RNAV Projects 2025\MCO SIDs\MCO FATHE SID\DME\KMCO FATHE4 (RNAV) SID DME_241105.tgs
Output File:	C:\Users\Mark CTR Thompson\OneDrive - Federal Aviation Administration\Desktop\RNAV Projects\RNAV Projects 2025\MCO SIDs\MCO FATHE SID\DME\KMCO [IFPA] FATHE4 20241105_0829 EST\KMCO-RW17R-DER_KAAPE\KMCO FATHE4 SID RW17R KAAPE 20241105_0829 EST.pdf
Procedure Name:	FATHE4
Software: DmeDmePlugin:	7.4.0
Date/Time:	11/05/2024 08:29 EST
Databases:	MITRE 3DEP 3 arcsec

### Failures

No Failures

### Warnings

No Warnings

### Informational

No Informational

### Notes For Flight Check

None

### Flight Plan

Name	Type	Lat/Lon	Altitude (ft)	VNAV Mode	Ground Speed (kts)	Turn Type	Leg Type
KMCO:RW17R:DER	WP	N28° 24' 29.20", W081° 17' 44.13"	86.7	VNAV	130	FLY_BY	TF
KAAPE	WP	N28° 20' 56.58", W081° 16' 05.60"	876.5	VNAV	200	FLY_BY	TF
Climb Gradient: 200.0 ft/NM							

### Flyability

Flight Type:	SID
Selected Airport:	KMCO [IFPA]
Climb Gradient:	200.0 ft/NM
Speeds:	130 at the Runway DER
	145 at the end of the VA or VI leg
	200 Ground Speed to 11000 FT
	240 Ground Speed to 18000 FT
	260 Ground Speed to 24000 FT
	340 Ground Speed above 24000 FT
Descent During a Turn:	Allowed
VNAV Mode:	Flight Plan



## DME DME Assessment Results for FATHE4 path KMCO:RW17R:DER\_KAAPE

DME/DME	
RNP:	RNP 2
Flight Mode:	Manual
Line of Sight (DTED Level 0 Max):	Evaluated
Inertial Drift:	Enabled
Initial Drift:	0.558 NM
INS Drift Rate:	8.0 NM/Hour
Range Mode:	OSV
RNP Edges:	Evaluated
Min DME Range:	3.0 NM
DME Types:	DME, VOR-DME, VORTAC, TACAN
DME Include Angles:	30 to 150
Critical DMEs:	Allowed
DoD Facilities:	Included
Foreign Facilities:	Not included
High DMEs:	Included
Low DMEs:	Included
Terminal DMEs:	Included
Flight Check DMEs:	Not selected
Higher Altitudes:	Not Evaluated
Near Maximum Altitude:	Not Evaluated
Automatic ESVs:	Not enabled
Disabled DMEs:	None

### DME/DME (Continued)

#### DMEs Used

#	Name	Lat/Lon	MAGVAR	Range	Type	Source	Critical	Status	Time	Distance
---	------	---------	--------	-------	------	--------	----------	--------	------	----------

#### Flight Check DME Selection

Distance [NM]	Selected DMEs	Alternate
0.0		

#### Inertial Drift Segments

#	Start Location	End Location	Length [NM]
1	N28° 24' 27.04", W081° 17' 44.11"	N28° 20' 56.58", W081° 16' 05.60"	3.9166

#### Available DMEs by Waypoints

Waypoint Before	Waypoint After	DME List	Suggested DMEs
KMCO:RW17R:DER	KAAPE		

**DME DME Assessment Results for FATHE4 path KMCO:RW17R:DER\_KAAPE**

**User Data Files**

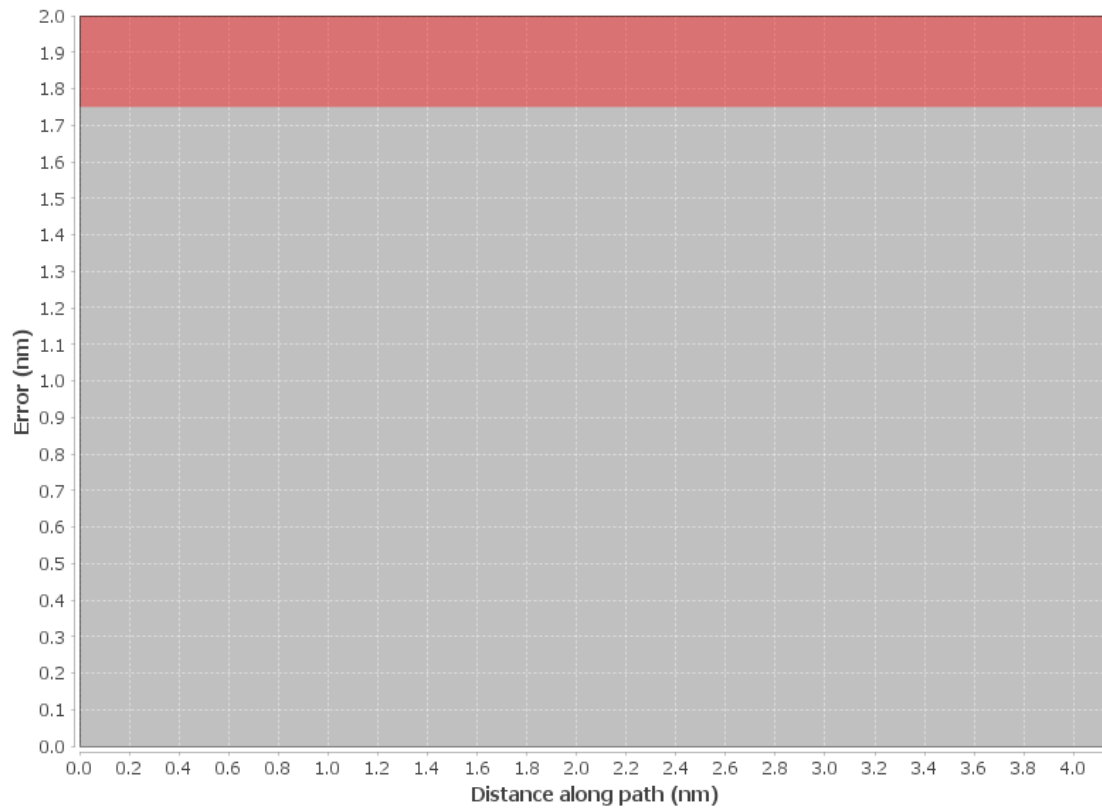
#	File Name
None	

None

**User DMEs**

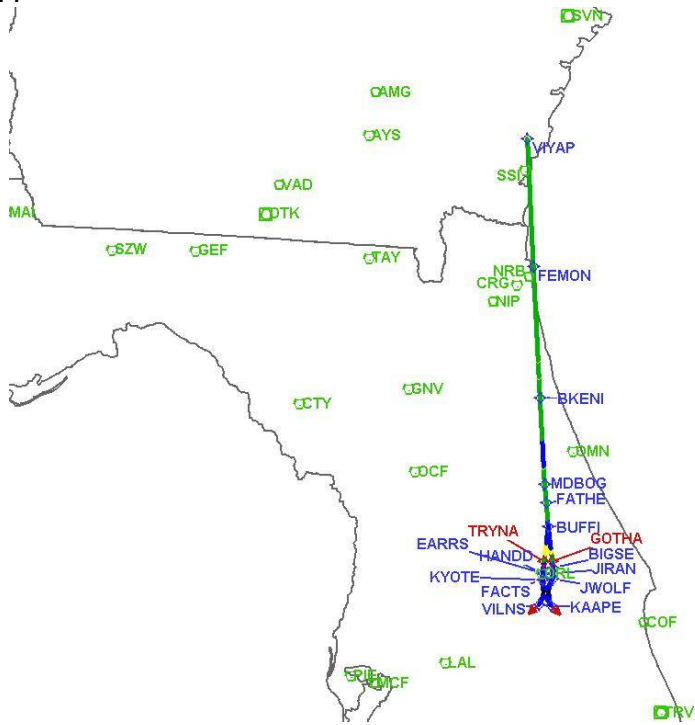
#	Name	Lat/Lon	MAGVAR	Range	Elevation [ft]	Frequency	Replaces	Status
1	OCF FAA 714002-32 OCF	N29° 10' 38.92", W082° 13' 34.80"	0.0 E	40	78.3	113.7	OCF FAA 714002-32	
	ESV:	Bearing [True]: 50.0° to 120.0° Bearing [Mag]: 50.0° to 120.0°				Arc Distance: Out to 80.0 NM Altitude: 5000.0 to 18000.0 ft		
2	GNV FAA 704230-48 GNV	N29° 41' 31.61", W082° 16' 22.70"	4.0 W	40	127.5	116.2	GNV FAA 704230-48	
	ESV:	Bearing [True]: 116.0° to 141.0° Bearing [Mag]: 120.0° to 145.0°				Arc Distance: Out to 72.0 NM Altitude: 5000.0 to 10200.0 ft		
3	LAL FAA 704224-41 LAL	N27° 59' 10.31", W082° 00' 50.06"	1.0 E	130	133.8	116.0	LAL FAA 704224-41	
	ESV:	Bearing [True]: 360.0° to 77.0° Bearing [Mag]: 359.0° to 76.0°				Arc Distance: Out to 70.0 NM Altitude: 3000.0 to 14700.0 ft		
4	OCF FAA 714002-18 OCF	N29° 10' 38.92", W082° 13' 34.80"	0.0 E	40	78.3	113.7	OCF FAA 714002-18	
	ESV:	Bearing [True]: 117.0° to 180.0° Bearing [Mag]: 117.0° to 180.0°				Arc Distance: Out to 80.0 NM Altitude: 4000.0 to 20000.0 ft		

### DME Error



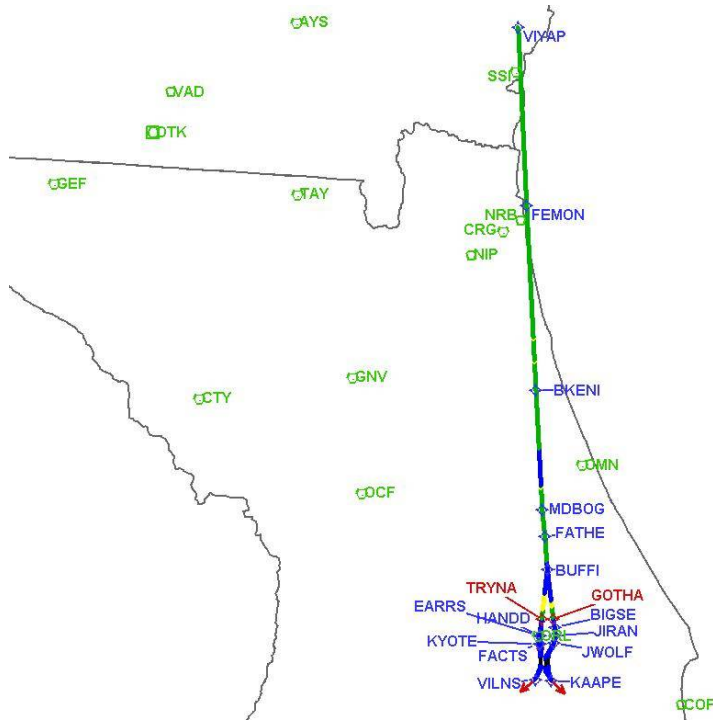
# DME DME Assessment Results for FATHE4 path KMCO:RW17R:DER\_KAAPE

Graphic Depiction 1



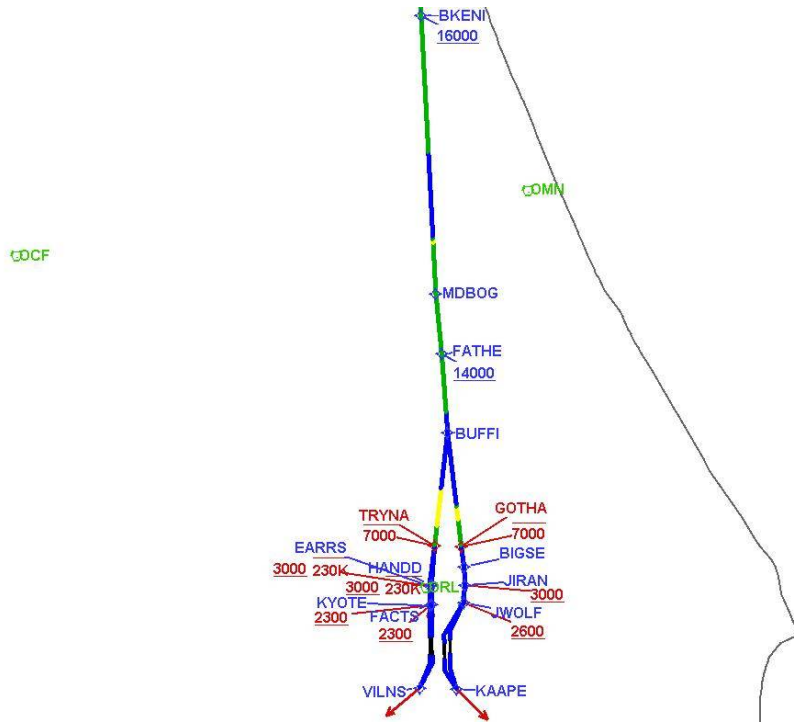
# DME DME Assessment Results for FATHE4 path KMCO:RW17R:DER\_KAAPE

Graphic Depiction 2



# DME DME Assessment Results for FATHE4 path KMCO:RW17R:DER\_KAAPE

Graphic Depiction 3



## DME DME Assessment Results for FATHE4 path KMCO:RW18L:DER\_VILNS

### Results Summary

Flyability:	Completed
DME/DME:	Completed - No Critical DMEs
Name:	Mark CTR Thompson
Project File:	C:\Users\Mark CTR Thompson\OneDrive - Federal Aviation Administration\Desktop\RNAV Projects\RNAV Projects 2025\MCO SIDs\MCO FATHE SID\DME\KMCO FATHE4 (RNAV) SID DME_241105.tgs
Output File:	C:\Users\Mark CTR Thompson\OneDrive - Federal Aviation Administration\Desktop\RNAV Projects\RNAV Projects 2025\MCO SIDs\MCO FATHE SID\DME\KMCO [IFPA] FATHE4 20241105_0829 EST\KMCO-RW18L-DER_VILNS\KMCO FATHE4 SID RW18L VILNS 20241105_0829 EST.pdf
Procedure Name:	FATHE4
Software: DmeDmePlugin:	7.4.0
Date/Time:	11/05/2024 08:29 EST
Databases:	MITRE 3DEP 3 arcsec

### Failures

No Failures

### Warnings

No Warnings

### Informational

No Informational

### Notes For Flight Check

None

### Flight Plan

Name	Type	Lat/Lon	Altitude (ft)	VNAV Mode	Ground Speed (kts)	Turn Type	Leg Type
KMCO:RW18L:DER	WP	N28° 24' 55.15", W081° 19' 19.04"	91	VNAV	130	FLY_BY	TF
VILNS	WP	N28° 21' 07.79", W081° 20' 55.28"	894.7	VNAV	200	FLY_BY	TF
Climb Gradient: 200.0 ft/NM							

### Flyability

Flight Type:	SID
Selected Airport:	KMCO [IFPA]
Climb Gradient:	200.0 ft/NM
Speeds:	130 at the Runway DER
	145 at the end of the VA or VI leg
	200 Ground Speed to 11000 FT
	240 Ground Speed to 18000 FT
	260 Ground Speed to 24000 FT
	340 Ground Speed above 24000 FT
Descent During a Turn:	Allowed
VNAV Mode:	Flight Plan

## DME DME Assessment Results for FATHE4 path KMCO:RW18L:DER\_VILNS

DME/DME	
RNP:	RNP 2
Flight Mode:	Manual
Line of Sight (DTED Level 0 Max):	Evaluated
Inertial Drift:	Enabled
Initial Drift:	0.558 NM
INS Drift Rate:	8.0 NM/Hour
Range Mode:	OSV
RNP Edges:	Evaluated
Min DME Range:	3.0 NM
DME Types:	DME, VOR-DME, VORTAC, TACAN
DME Include Angles:	30 to 150
Critical DMEs:	Allowed
DoD Facilities:	Included
Foreign Facilities:	Not included
High DMEs:	Included
Low DMEs:	Included
Terminal DMEs:	Included
Flight Check DMEs:	Not selected
Higher Altitudes:	Not Evaluated
Near Maximum Altitude:	Not Evaluated
Automatic ESVs:	Not enabled
Disabled DMEs:	None

### DME/DME (Continued)

#### DMEs Used

#	Name	Lat/Lon	MAGVAR	Range	Type	Source	Critical	Status	Time	Distance
---	------	---------	--------	-------	------	--------	----------	--------	------	----------

#### Flight Check DME Selection

Distance [NM]	Selected DMEs	Alternate
0.0		

#### Inertial Drift Segments

#	Start Location	End Location	Length [NM]
1	N28° 24' 52.98", W081° 19' 19.01"	N28° 21' 07.79", W081° 20' 55.28"	4.0948

#### Available DMEs by Waypoints

Waypoint Before	Waypoint After	DME List	Suggested DMEs
KMCO:RW18L:DER	VILNS		



**DME DME Assessment Results for FATHE4 path KMCO:RW18L:DER\_VILNS**

**User Data Files**

#	File Name
None	

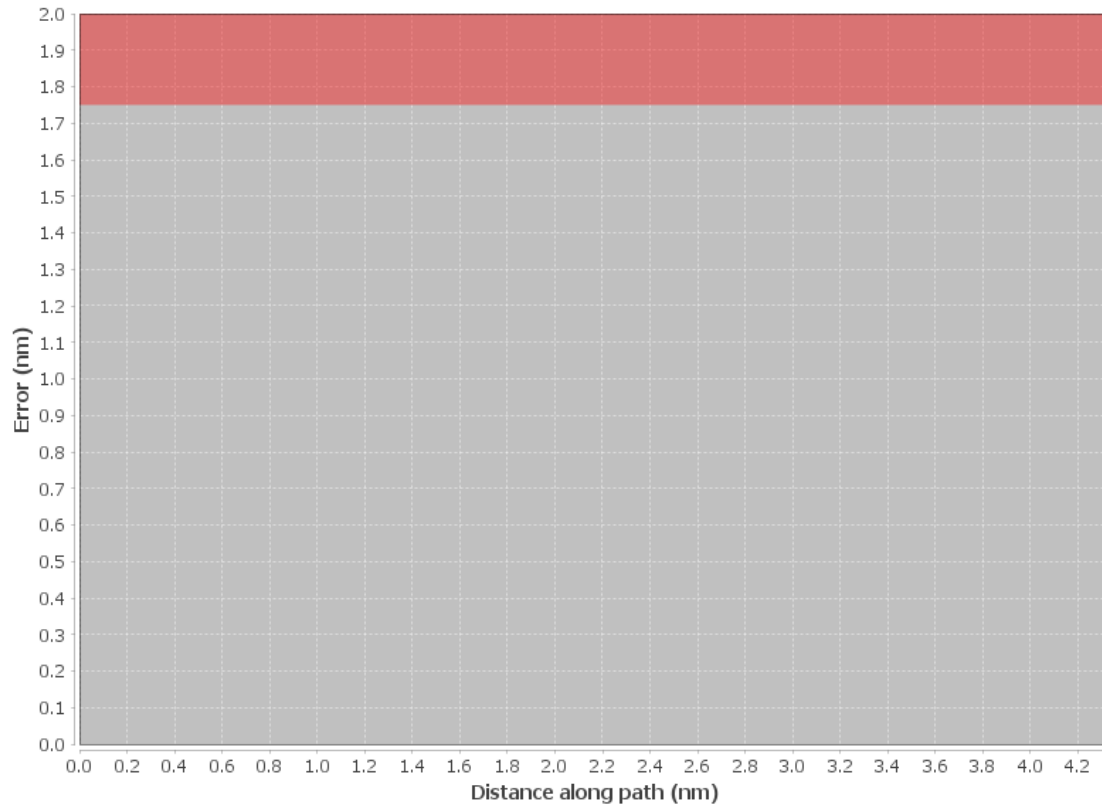
None

**User DMEs**

#	Name	Lat/Lon	MAGVAR	Range	Elevation [ft]	Frequency	Replaces	Status
1	OCF FAA 714002-32 OCF	N29° 10' 38.92", W082° 13' 34.80"	0.0 E	40	78.3	113.7	OCF FAA 714002-32	
	ESV:	Bearing [True]: 50.0° to 120.0° Bearing [Mag]: 50.0° to 120.0°				Arc Distance: Out to 80.0 NM Altitude: 5000.0 to 18000.0 ft		
2	GNV FAA 704230-48 GNV	N29° 41' 31.61", W082° 16' 22.70"	4.0 W	40	127.5	116.2	GNV FAA 704230-48	
	ESV:	Bearing [True]: 116.0° to 141.0° Bearing [Mag]: 120.0° to 145.0°				Arc Distance: Out to 72.0 NM Altitude: 5000.0 to 10200.0 ft		
3	LAL FAA 704224-41 LAL	N27° 59' 10.31", W082° 00' 50.06"	1.0 E	130	133.8	116.0	LAL FAA 704224-41	
	ESV:	Bearing [True]: 360.0° to 77.0° Bearing [Mag]: 359.0° to 76.0°				Arc Distance: Out to 70.0 NM Altitude: 3000.0 to 14700.0 ft		
4	OCF FAA 714002-18 OCF	N29° 10' 38.92", W082° 13' 34.80"	0.0 E	40	78.3	113.7	OCF FAA 714002-18	
	ESV:	Bearing [True]: 117.0° to 180.0° Bearing [Mag]: 117.0° to 180.0°				Arc Distance: Out to 80.0 NM Altitude: 4000.0 to 20000.0 ft		

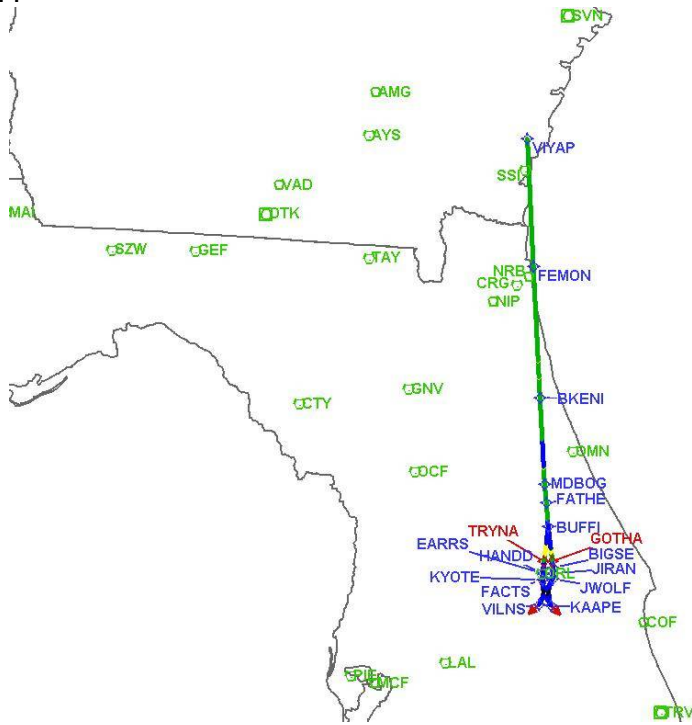
# DME DME Assessment Results for FATHE4 path KMCO:RW18L:DER\_VILNS

## DME Error



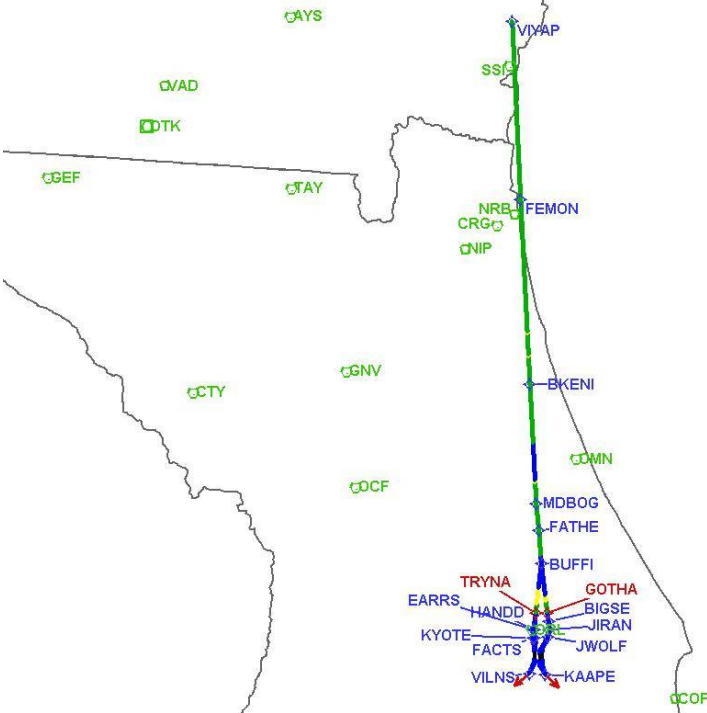
# DME DME Assessment Results for FATHE4 path KMCO:RW18L:DER\_VILNS

Graphic Depiction 1



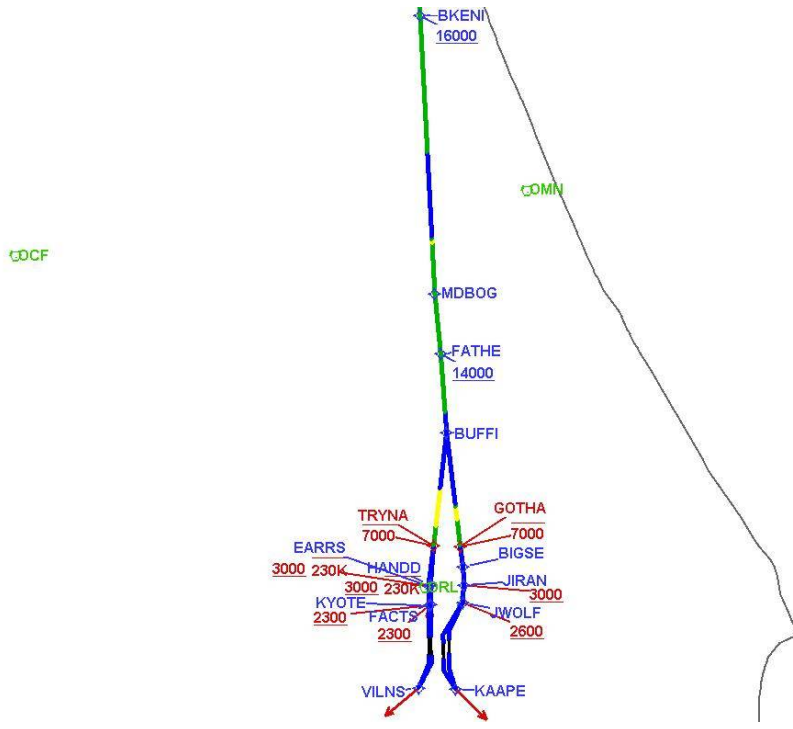
DME DME Assessment Results for FATHE4 path KMCO:RW18L:DER\_VILNS

Graphic Depiction 2



# DME DME Assessment Results for FATHE4 path KMCO:RW18L:DER\_VILNS

Graphic Depiction 3



## DME DME Assessment Results for FATHE4 path KMCO:RW18R:DER\_VILNS

Results Summary	
Flyability:	Completed
DME/DME:	Completed - No Critical DMEs
Name:	Mark CTR Thompson
Project File:	C:\Users\Mark CTR Thompson\OneDrive - Federal Aviation Administration\Desktop\RNAV Projects\RNAV Projects 2025\MCO SIDs\MCO FATHE SID\DME\KMCO FATHE4 (RNAV) SID DME_241105.tgs
Output File:	C:\Users\Mark CTR Thompson\OneDrive - Federal Aviation Administration\Desktop\RNAV Projects\RNAV Projects 2025\MCO SIDs\MCO FATHE SID\DME\KMCO [IFPA] FATHE4 20241105_0829 EST\KMCO-RW18R-DER_VILNS\KMCO FATHE4 SID RW18R VILNS 20241105_0829 EST.pdf
Procedure Name:	FATHE4
Software: DmeDmePlugin:	7.4.0
Date/Time:	11/05/2024 08:29 EST
Databases:	MITRE 3DEP 3 arcsec

Failures
No Failures

Warnings
No Warnings

Informational
No Informational

Notes For Flight Check
None

Flight Plan							
Name	Type	Lat/Lon	Altitude (ft)	VNAV Mode	Ground Speed (kts)	Turn Type	Leg Type
KMCO:RW18R:DER	WP	N28° 24' 55.01", W081° 19' 35.83"	91.1	VNAV	130	FLY_BY	TF
VILNS	WP	N28° 21' 07.79", W081° 20' 55.28"	894.7	VNAV	200	FLY_BY	TF
Climb Gradient: 200.0 ft/NM							

Flyability	
Flight Type:	SID
Selected Airport:	KMCO [IFPA]
Climb Gradient:	200.0 ft/NM
Speeds:	130 at the Runway DER
	145 at the end of the VA or VI leg
	200 Ground Speed to 11000 FT
	240 Ground Speed to 18000 FT
	260 Ground Speed to 24000 FT
	340 Ground Speed above 24000 FT
Descent During a Turn:	Allowed
VNAV Mode:	Flight Plan

**DME DME Assessment Results for FATHE4 path KMCO:RW18R:DER\_VILNS**

<b>DME/DME</b>	
RNP:	RNP 2
Flight Mode:	Manual
Line of Sight (DTED Level 0 Max):	Evaluated
Inertial Drift:	Enabled
Initial Drift:	0.558 NM
INS Drift Rate:	8.0 NM/Hour
Range Mode:	OSV
RNP Edges:	Evaluated
Min DME Range:	3.0 NM
DME Types:	DME, VOR-DME, VORTAC, TACAN
DME Include Angles:	30 to 150
Critical DMEs:	Allowed
DoD Facilities:	Included
Foreign Facilities:	Not included
High DMEs:	Included
Low DMEs:	Included
Terminal DMEs:	Included
Flight Check DMEs:	Not selected
Higher Altitudes:	Not Evaluated
Near Maximum Altitude:	Not Evaluated
Automatic ESVs:	Not enabled
Disabled DMEs:	None

**DME/DME (Continued)**

**DMEs Used**

#	Name	Lat/Lon	MAGVAR	Range	Type	Source	Critical	Status	Time	Distance
---	------	---------	--------	-------	------	--------	----------	--------	------	----------

**Flight Check DME Selection**

Distance [NM]	Selected DMEs	Alternate
0.0		

**Inertial Drift Segments**

#	Start Location	End Location	Length [NM]
1	N28° 24' 52.89", W081° 19' 35.81"	N28° 21' 07.79", W081° 20' 55.28"	3.9856

**Available DMEs by Waypoints**

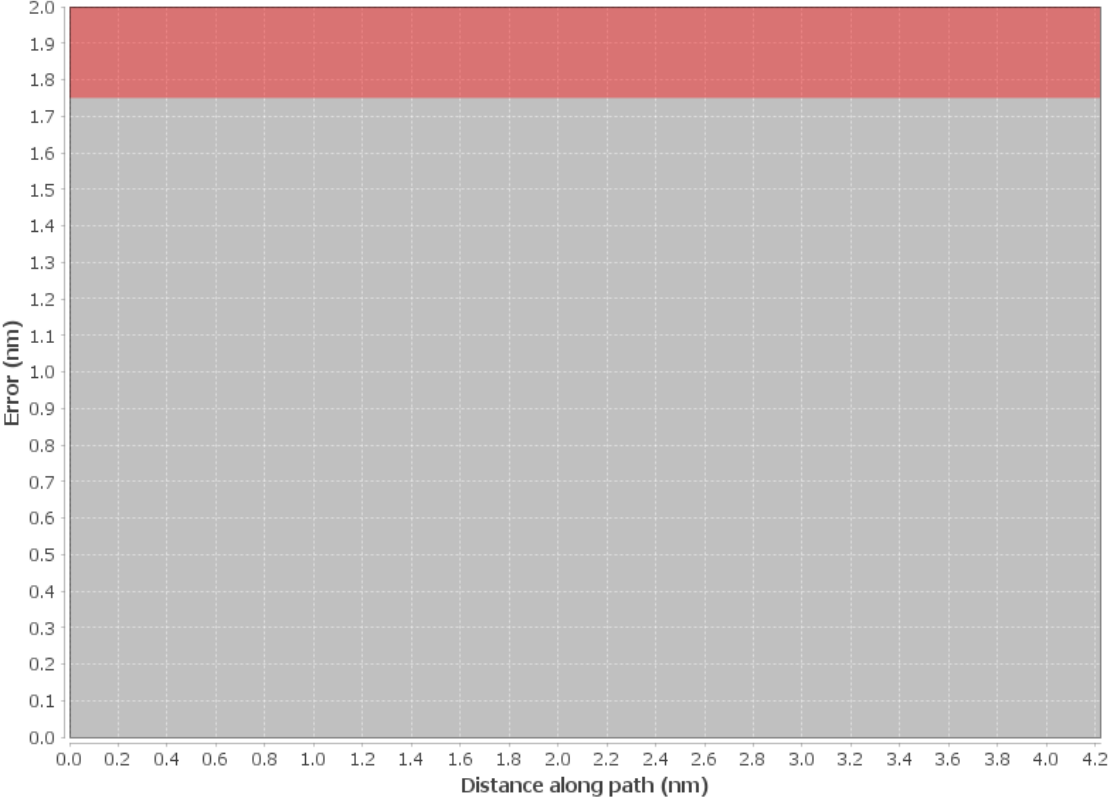
Waypoint Before	Waypoint After	DME List	Suggested DMEs
KMCO:RW18R:DER	VILNS		

**DME DME Assessment Results for FATHE4 path KMCO:RW18R:DER\_VILNS**

<b>User Data Files</b>								
#	File Name							
None								
<b>User DMEs</b>								
#	Name	Lat/Lon	MAGVAR	Range	Elevation [ft]	Frequency	Replaces	Status
1	OCF FAA 714002-32 OCF	N29° 10' 38.92", W082° 13' 34.80"	0.0 E	40	78.3	113.7	OCF FAA 714002-32	
ESV:		Bearing [True]: 50.0° to 120.0° Bearing [Mag]: 50.0° to 120.0°				Arc Distance: Out to 80.0 NM Altitude: 5000.0 to 18000.0 ft		
2	GNV FAA 704230-48 GNV	N29° 41' 31.61", W082° 16' 22.70"	4.0 W	40	127.5	116.2	GNV FAA 704230-48	
ESV:		Bearing [True]: 116.0° to 141.0° Bearing [Mag]: 120.0° to 145.0°				Arc Distance: Out to 72.0 NM Altitude: 5000.0 to 10200.0 ft		
3	LAL FAA 704224-41 LAL	N27° 59' 10.31", W082° 00' 50.06"	1.0 E	130	133.8	116.0	LAL FAA 704224-41	
ESV:		Bearing [True]: 360.0° to 77.0° Bearing [Mag]: 359.0° to 76.0°				Arc Distance: Out to 70.0 NM Altitude: 3000.0 to 14700.0 ft		
4	OCF FAA 714002-18 OCF	N29° 10' 38.92", W082° 13' 34.80"	0.0 E	40	78.3	113.7	OCF FAA 714002-18	
ESV:		Bearing [True]: 117.0° to 180.0° Bearing [Mag]: 117.0° to 180.0°				Arc Distance: Out to 80.0 NM Altitude: 4000.0 to 20000.0 ft		



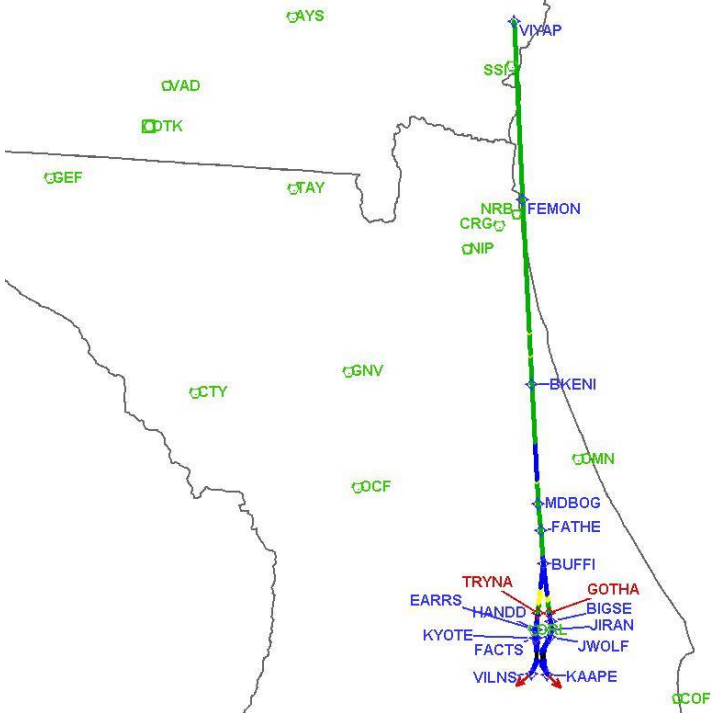
**DME Error**





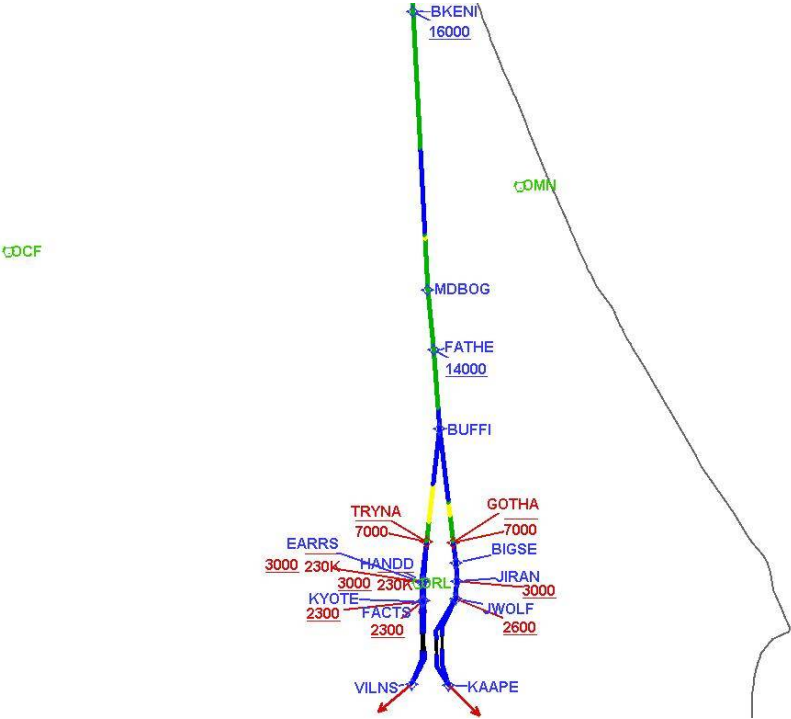
DME DME Assessment Results for FATHE4 path KMCO:RW18R:DER\_VILNS

Graphic Depiction 2



DME DME Assessment Results for FATHE4 path KMCO:RW18R:DER\_VILNS

Graphic Depiction 3



## DME DME Assessment Results for FATHE4 path KMCO:RW35L:DER\_VIYAP

Results Summary	
Flyability:	Completed
DME/DME:	Completed - No Critical DMEs
Name:	Mark CTR Thompson
Project File:	C:\Users\Mark CTR Thompson\OneDrive - Federal Aviation Administration\Desktop\RNAV Projects\RNAV Projects 2025\MCO SIDs\MCO FATHE SID\DME\KMCO FATHE4 (RNAV) SID DME_241105.tgs
Output File:	C:\Users\Mark CTR Thompson\OneDrive - Federal Aviation Administration\Desktop\RNAV Projects\RNAV Projects 2025\MCO SIDs\MCO FATHE SID\DME\KMCO [IFPA] FATHE4 20241105_0829 EST\KMCO-RW35L-DER_VIYAP\KMCO FATHE4 SID RW35L VIYAP 20241105_0829 EST.pdf
Procedure Name:	FATHE4
Software: DmeDmePlugin:	7.4.0
Date/Time:	11/05/2024 08:29 EST
Databases:	MITRE 3DEP 3 arcsec

Failures
No Failures

Warnings
No Warnings

Informational
No Informational

Notes For Flight Check
None

Flight Plan							
Name	Type	Lat/Lon	Altitude (ft)	VNAV Mode	Ground Speed (kts)	Turn Type	Leg Type
KMCO:RW35L:DER	WP	N28° 26' 08.20", W081° 17' 45.17"	90.1	VNAV	130	FLY_BY	TF
JWOLF	WP	N28° 30' 51.68", W081° 15' 12.47"	2000	VNAV	200	FLY_BY	TF
JIRAN	WP	N28° 32' 57.24", W081° 15' 03.58"	2500	VNAV	200	FLY_BY	TF
BIGSE	WP	N28° 35' 00.48", W081° 15' 08.80"	2500	VNAV	200	FLY_BY	TF
GOTHA	WP	N28° 37' 20.96", W081° 15' 30.89"	4000	VNAV	200	FLY_BY	TF
BUFFI	WP	N28° 50' 26.35", W081° 17' 18.07"	4000	VNAV	200	FLY_BY	TF
FATHE	WP	N28° 59' 26.22", W081° 18' 04.20"	8000	VNAV	200	FLY_BY	TF
MDBOG	WP	N29° 06' 22.80", W081° 18' 50.51"	9000	VNAV	200	FLY_BY	TF
BKENI	WP	N29° 38' 17.84", W081° 20' 45.89"	15000	VNAV	240	FLY_BY	TF
FEMON	WP	N30° 27' 31.57", W081° 23' 36.20"	18000	VNAV	240	FLY_BY	TF
VIYAP	WP	N31° 15' 08.15", W081° 26' 08.18"	18000	VNAV	240	FLY_BY	TF
Climb Gradient: 200.0 ft/NM							

**DME DME Assessment Results for FATHE4 path KMCO:RW35L:DER\_VIYAP**

<b>Flyability</b>	
Flight Type:	SID
Selected Airport:	KMCO [IFPA]
Climb Gradient:	200.0 ft/NM
Speeds:	130 at the Runway DER
	145 at the end of the VA or VI leg
	200 Ground Speed to 11000 FT
	240 Ground Speed to 18000 FT
	260 Ground Speed to 24000 FT
	340 Ground Speed above 24000 FT
Descent During a Turn:	Allowed
VNAV Mode:	Flight Plan

<b>DME/DME</b>	
RNP:	RNP 2
Flight Mode:	Manual
Line of Sight (DTED Level 0 Max):	Evaluated
Inertial Drift:	Enabled
Initial Drift:	0.558 NM
INS Drift Rate:	8.0 NM/Hour
Range Mode:	OSV
RNP Edges:	Evaluated
Min DME Range:	3.0 NM
DME Types:	DME, VOR-DME, VORTAC, TACAN
DME Include Angles:	30 to 150
Critical DMEs:	Allowed
DoD Facilities:	Included
Foreign Facilities:	Not included
High DMEs:	Included
Low DMEs:	Included
Terminal DMEs:	Included
Flight Check DMEs:	Not selected
Higher Altitudes:	Not Evaluated
Near Maximum Altitude:	Not Evaluated
Automatic ESVs:	Not enabled
Disabled DMEs:	None

**DME DME Assessment Results for FATHE4 path KMCO:RW35L:DER\_VIYAP**

<b>DME/DME (Continued)</b>										
<b>DMEs Used</b>										
#	Name	Lat/Lon	MAGVAR	Range	Type	Source	Critical	Status	Time	Distance
1	ORL	N28° 32' 33.80", W081° 20' 06.05"	0.0 E	130	H		NO	Enabled	35.3 %	35.7 %
2	SSI	N31° 03' 01.85", W081° 26' 45.47"	4.0 W	40	L		NO	Enabled	24.4 %	26.7 %
3	SAV	N32° 08' 46.56", W081° 11' 56.78"	6.0 W	130	H		NO	Enabled	24.3 %	26.6 %
4	TAY	N30° 30' 16.70", W082° 33' 10.45"	3.0 W	130	H		NO	Enabled	53.1 %	58.1 %
5	GNV	N29° 41' 31.61", W082° 16' 22.70"	4.0 W	40	L		NO	Enabled	11.5 %	10.5 %
6	OMN	N29° 18' 11.70", W081° 06' 45.71"	0.0 E	130	H		NO	Enabled	63 %	64.7 %
7	OCF	N29° 10' 38.92", W082° 13' 34.80"	0.0 E	40	L		NO	Enabled	30.2 %	28.5 %
8	NIP	N30° 14' 05.46", W081° 40' 30.20"	6.0 W	40	L		NO	Enabled	34.5 %	37.8 %
9	LAL	N27° 59' 10.31", W082° 00' 50.06"	1.0 E	130	H		NO	Enabled	4.5 %	4.1 %
10	VAD	N30° 57' 36.30", W083° 11' 36.43"	3.0 W	130	H		NO	Enabled	23.3 %	25.6 %
11	CRG	N30° 20' 19.97", W081° 30' 35.74"	3.0 W	130	H		NO	Enabled	49.3 %	53.8 %
12	AMG	N31° 32' 11.60", W082° 30' 29.12"	0.0 E	130	H		NO	Enabled	33.1 %	36.2 %
13	NRB	N30° 23' 19.01", W081° 25' 23.08"	6.0 W	40	L		NO	Enabled	39.4 %	43.2 %

<b>Flight Check DME Selection</b>						
Distance [NM]	Selected DMEs					Alternate
0.0						
11.8	OCF	ORL	LAL			
15.0	OCF	ORL	LAL	OMN		
16.7						
27.3	OCF	OMN	ORL	LAL		
29.5	OCF	OMN	ORL			
29.5	OCF	OMN	ORL	GNV		
47.1	GNV	OMN	OCF			
47.3						
57.1	OCF	OMN				
70.5	OCF	OMN	CRG			
70.8	OCF	OMN	CRG	ORL		
71.1	OCF	OMN	CRG	ORL	TAY	
80.6	TAY	ORL	NRB	CRG		
86.2	TAY	ORL	NRB	CRG	OMN	NIP
106.9	NIP	NRB	OMN	TAY	CRG	
108.7	NIP	NRB	OMN	TAY	AMG	
114.7	OMN	NIP	TAY	AMG		
117.0	OMN	CRG	NIP	TAY	AMG	
144.3	TAY	SSI	NRB	CRG	AMG	VAD
154.5	AMG	SAV	CRG	TAY	NRB	VAD
157.4	AMG	SAV	CRG	VAD	TAY	

<b>Inertial Drift Segments</b>			
#	Start Location	End Location	Length [NM]
1	N28° 26' 10.32", W081° 17' 45.19"	N28° 37' 20.96", W081° 15' 30.89"	11.8284
2	N28° 42' 09.27", W081° 16' 10.18"	N28° 52' 42.15", W081° 17' 29.66"	10.6085
3	N29° 12' 46.49", W081° 19' 13.53"	N29° 22' 30.35", W081° 19' 48.65"	9.7201

**DME DME Assessment Results for FATHE4 path KMCO:RW35L:DER\_VIYAP**

**Available DMEs by Waypoints**

Waypoint Before	Waypoint After	DME List	Suggested DMEs
KMCO:RW35L:DER	JWOLF		
JWOLF	JIRAN		
JIRAN	BIGSE		
BIGSE	GOTHA	OCF, LAL, ORL	
GOTHA	BUFFI	OMN, OCF, LAL, ORL	
BUFFI	FATHE	OMN, OCF, LAL, ORL, GNV	
FATHE	MDBOG	OMN, OCF, ORL, GNV	
MDBOG	BKENI	OMN, OCF, ORL, CRG, TAY, GNV	
BKENI	FEMON	OMN, OCF, NIP, ORL, SSI, CRG, AMG, TAY, NRB	
FEMON	VIYAP	OMN, NIP, SSI, VAD, CRG, SAV, AMG, TAY, NRB	

**User Data Files**

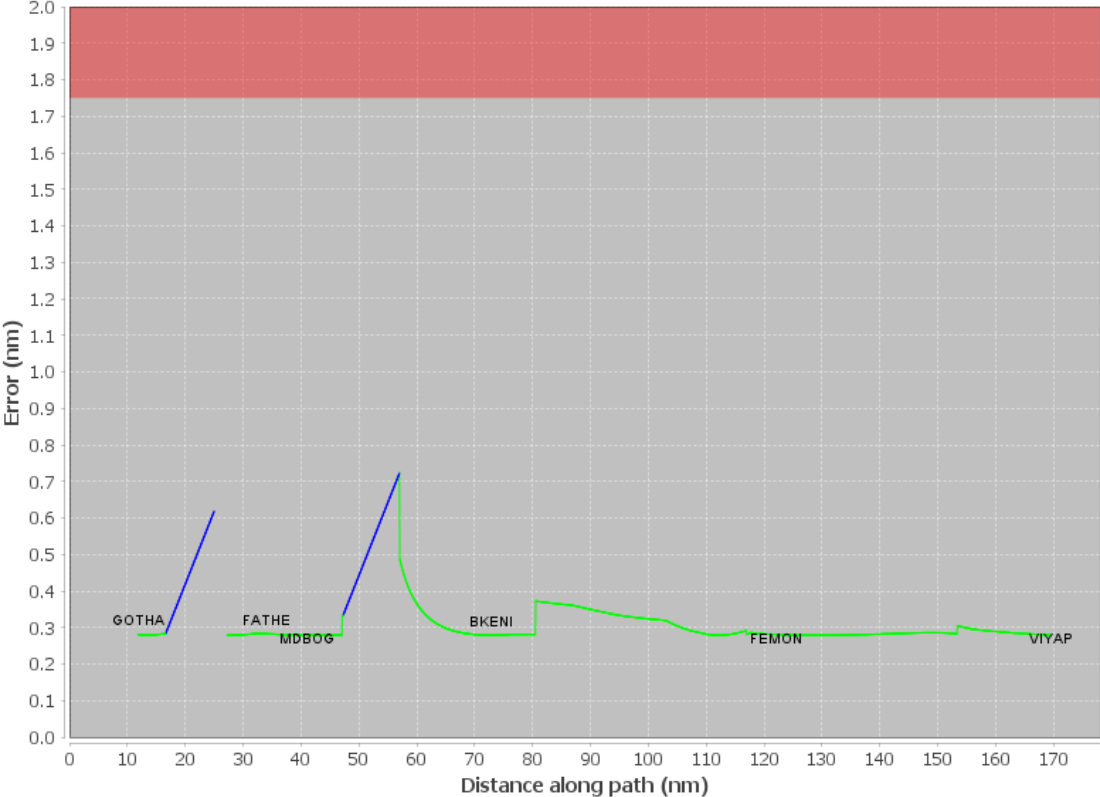
#	File Name
	None

**User DMEs**

#	Name	Lat/Lon	MAGVAR	Range	Elevation [ft]	Frequency	Replaces	Status
1	OCF FAA 714002-32 OCF	N29° 10' 38.92", W082° 13' 34.80"	0.0 E	40	78.3	113.7	OCF FAA 714002-32	
	ESV:	Bearing [True]: 50.0° to 120.0° Bearing [Mag]: 50.0° to 120.0°				Arc Distance: Out to 80.0 NM Altitude: 5000.0 to 18000.0 ft		
2	GNV FAA 704230-48 GNV	N29° 41' 31.61", W082° 16' 22.70"	4.0 W	40	127.5	116.2	GNV FAA 704230-48	
	ESV:	Bearing [True]: 116.0° to 141.0° Bearing [Mag]: 120.0° to 145.0°				Arc Distance: Out to 72.0 NM Altitude: 5000.0 to 10200.0 ft		
3	LAL FAA 704224-41 LAL	N27° 59' 10.31", W082° 00' 50.06"	1.0 E	130	133.8	116.0	LAL FAA 704224-41	
	ESV:	Bearing [True]: 360.0° to 77.0° Bearing [Mag]: 359.0° to 76.0°				Arc Distance: Out to 70.0 NM Altitude: 3000.0 to 14700.0 ft		
4	OCF FAA 714002-18 OCF	N29° 10' 38.92", W082° 13' 34.80"	0.0 E	40	78.3	113.7	OCF FAA 714002-18	
	ESV:	Bearing [True]: 117.0° to 180.0° Bearing [Mag]: 117.0° to 180.0°				Arc Distance: Out to 80.0 NM Altitude: 4000.0 to 20000.0 ft		

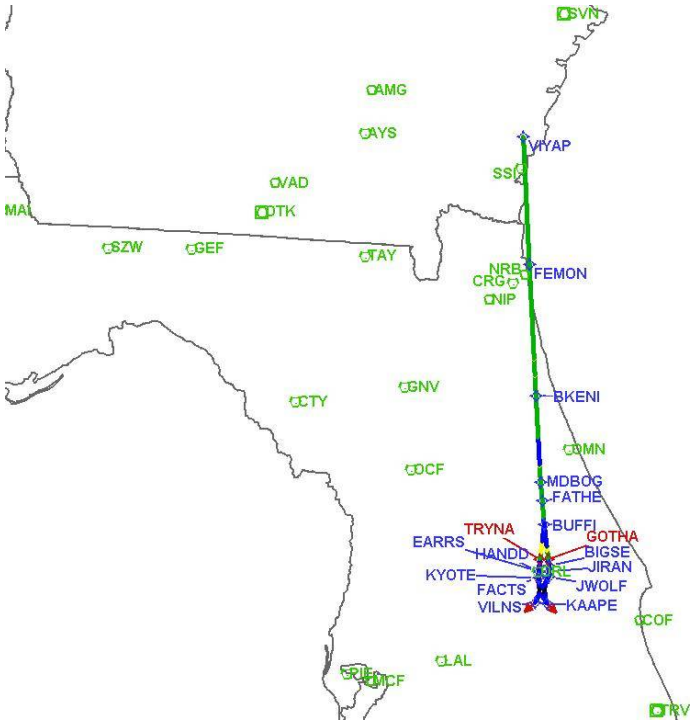


DME Error



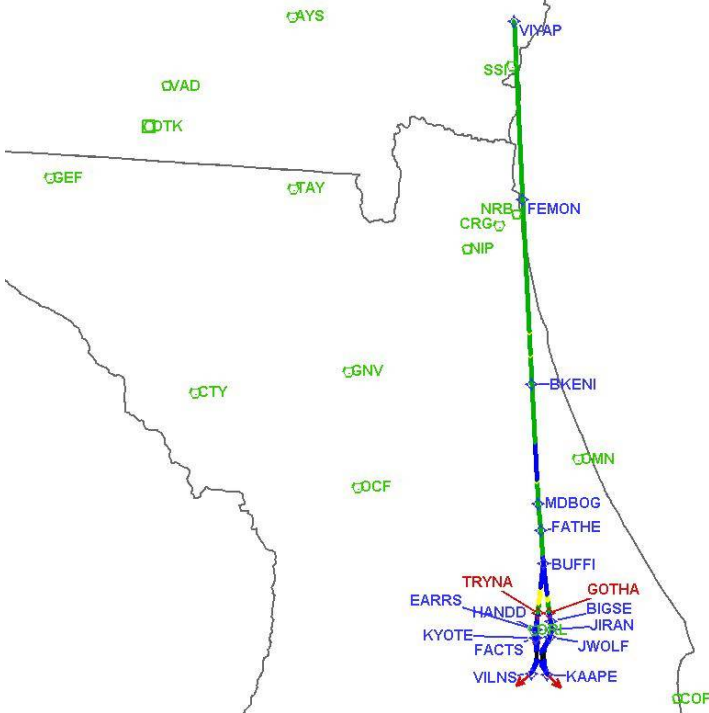
DME DME Assessment Results for FATHE4 path KMCO:RW35L:DER\_VIYAP

Graphic Depiction 1



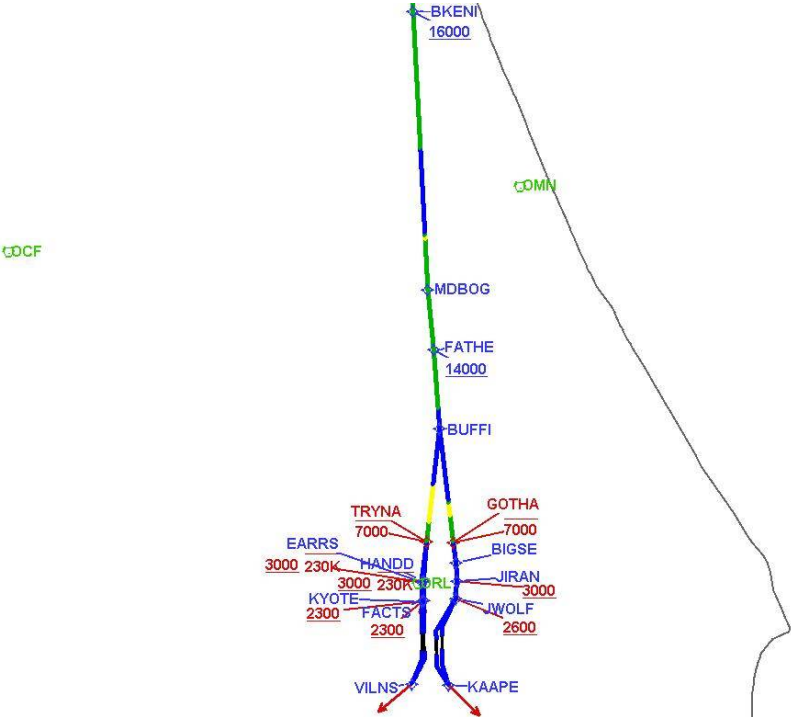
DME DME Assessment Results for FATHE4 path KMCO:RW35L:DER\_VIYAP

Graphic Depiction 2



DME DME Assessment Results for FATHE4 path KMCO:RW35L:DER\_VIYAP

Graphic Depiction 3



## DME DME Assessment Results for FATHE4 path KMCO:RW35R:DER\_JWOLF

### Results Summary

Flyability:	Completed
DME/DME:	Completed - No Critical DMEs
Name:	Mark CTR Thompson
Project File:	C:\Users\Mark CTR Thompson\OneDrive - Federal Aviation Administration\Desktop\RNAV Projects\RNAV Projects 2025\MCO SIDs\MCO FATHE SID\DME\KMCO FATHE4 (RNAV) SID DME_241105.tgs
Output File:	C:\Users\Mark CTR Thompson\OneDrive - Federal Aviation Administration\Desktop\RNAV Projects\RNAV Projects 2025\MCO SIDs\MCO FATHE SID\DME\KMCO [IFPA] FATHE4 20241105_0829 EST\KMCO-RW35R-DER_JWOLF\KMCO FATHE4 SID RW35R JWOLF 20241105_0829 EST.pdf
Procedure Name:	FATHE4
Software: DmeDmePlugin:	7.4.0
Date/Time:	11/05/2024 08:29 EST
Databases:	MITRE 3DEP 3 arcsec

### Failures

No Failures

### Warnings

No Warnings

### Informational

No Informational

### Notes For Flight Check

None

### Flight Plan

Name	Type	Lat/Lon	Altitude (ft)	VNAV Mode	Ground Speed (kts)	Turn Type	Leg Type
KMCO:RW35R:DER	WP	N28° 26' 37.31", W081° 16' 57.29"	89.7	VNAV	130	FLY_BY	TF
JWOLF	WP	N28° 30' 51.68", W081° 15' 12.47"	2000	VNAV	200	FLY_BY	TF

Climb Gradient:  
200.0 ft/NM

### Flyability

Flight Type:	SID
Selected Airport:	KMCO [IFPA]
Climb Gradient:	200.0 ft/NM
Speeds:	130 at the Runway DER
	145 at the end of the VA or VI leg
	200 Ground Speed to 11000 FT
	240 Ground Speed to 18000 FT
	260 Ground Speed to 24000 FT
	340 Ground Speed above 24000 FT
Descent During a Turn:	Allowed
VNAV Mode:	Flight Plan

**DME DME Assessment Results for FATHE4 path KMCO:RW35R:DER\_JWOLF**

<b>DME/DME</b>	
RNP:	RNP 2
Flight Mode:	Manual
Line of Sight (DTED Level 0 Max):	Evaluated
Inertial Drift:	Enabled
Initial Drift:	0.558 NM
INS Drift Rate:	8.0 NM/Hour
Range Mode:	OSV
RNP Edges:	Evaluated
Min DME Range:	3.0 NM
DME Types:	DME, VOR-DME, VORTAC, TACAN
DME Include Angles:	30 to 150
Critical DMEs:	Allowed
DoD Facilities:	Included
Foreign Facilities:	Not included
High DMEs:	Included
Low DMEs:	Included
Terminal DMEs:	Included
Flight Check DMEs:	Not selected
Higher Altitudes:	Not Evaluated
Near Maximum Altitude:	Not Evaluated
Automatic ESVs:	Not enabled
Disabled DMEs:	None

<b>DME/DME (Continued)</b>										
<b>DMEs Used</b>										
#	Name	Lat/Lon	MAGVAR	Range	Type	Source	Critical	Status	Time	Distance

<b>Flight Check DME Selection</b>						
Distance [NM]	Selected DMEs					Alternate
0.0						

<b>Inertial Drift Segments</b>			
#	Start Location	End Location	Length [NM]
1	N28° 26' 39.43", W081° 16' 57.31"	N28° 30' 51.68", W081° 15' 12.47"	4.5502

<b>Available DMEs by Waypoints</b>			
Waypoint Before	Waypoint After	DME List	Suggested DMEs
KMCO:RW35R:DER	JWOLF		

**DME DME Assessment Results for FATHE4 path KMCO:RW35R:DER\_JWOLF**

**User Data Files**

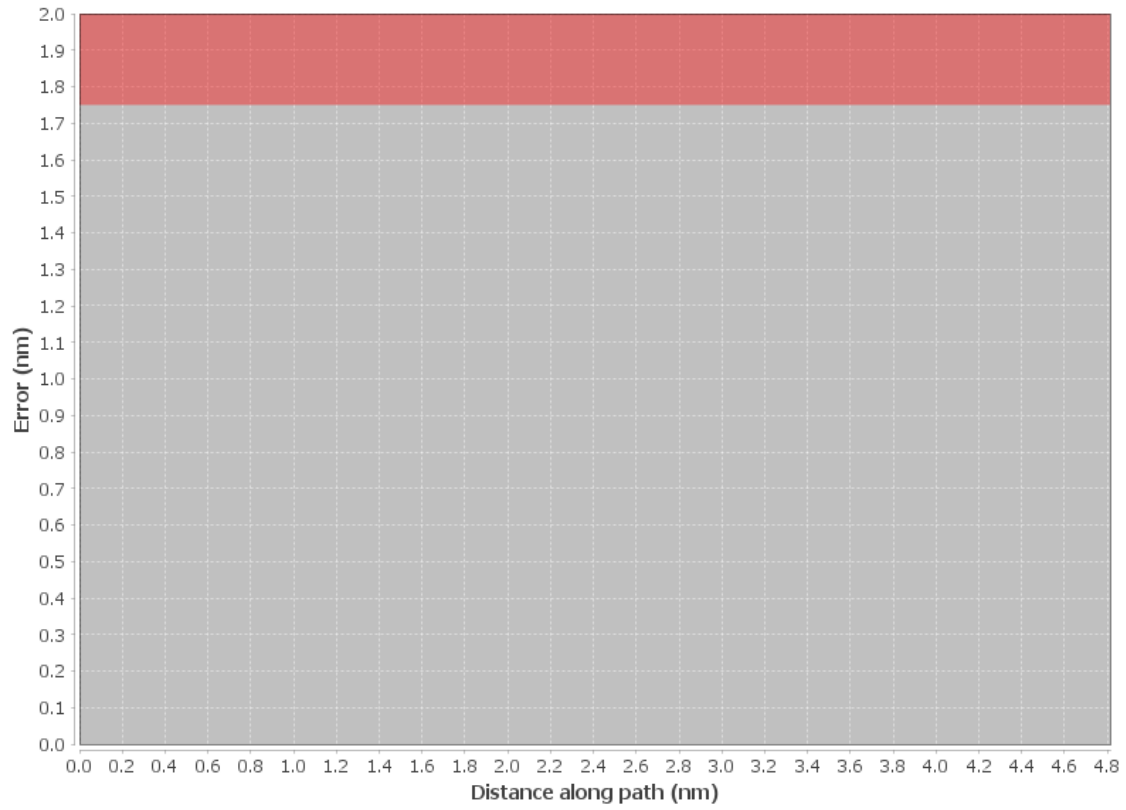
#	File Name
None	

None

**User DMEs**

#	Name	Lat/Lon	MAGVAR	Range	Elevation [ft]	Frequency	Replaces	Status
1	OCF FAA 714002-32 OCF	N29° 10' 38.92", W082° 13' 34.80"	0.0 E	40	78.3	113.7	OCF FAA 714002-32	
	ESV:	Bearing [True]: 50.0° to 120.0° Bearing [Mag]: 50.0° to 120.0°				Arc Distance: Out to 80.0 NM Altitude: 5000.0 to 18000.0 ft		
2	GNV FAA 704230-48 GNV	N29° 41' 31.61", W082° 16' 22.70"	4.0 W	40	127.5	116.2	GNV FAA 704230-48	
	ESV:	Bearing [True]: 116.0° to 141.0° Bearing [Mag]: 120.0° to 145.0°				Arc Distance: Out to 72.0 NM Altitude: 5000.0 to 10200.0 ft		
3	LAL FAA 704224-41 LAL	N27° 59' 10.31", W082° 00' 50.06"	1.0 E	130	133.8	116.0	LAL FAA 704224-41	
	ESV:	Bearing [True]: 360.0° to 77.0° Bearing [Mag]: 359.0° to 76.0°				Arc Distance: Out to 70.0 NM Altitude: 3000.0 to 14700.0 ft		
4	OCF FAA 714002-18 OCF	N29° 10' 38.92", W082° 13' 34.80"	0.0 E	40	78.3	113.7	OCF FAA 714002-18	
	ESV:	Bearing [True]: 117.0° to 180.0° Bearing [Mag]: 117.0° to 180.0°				Arc Distance: Out to 80.0 NM Altitude: 4000.0 to 20000.0 ft		

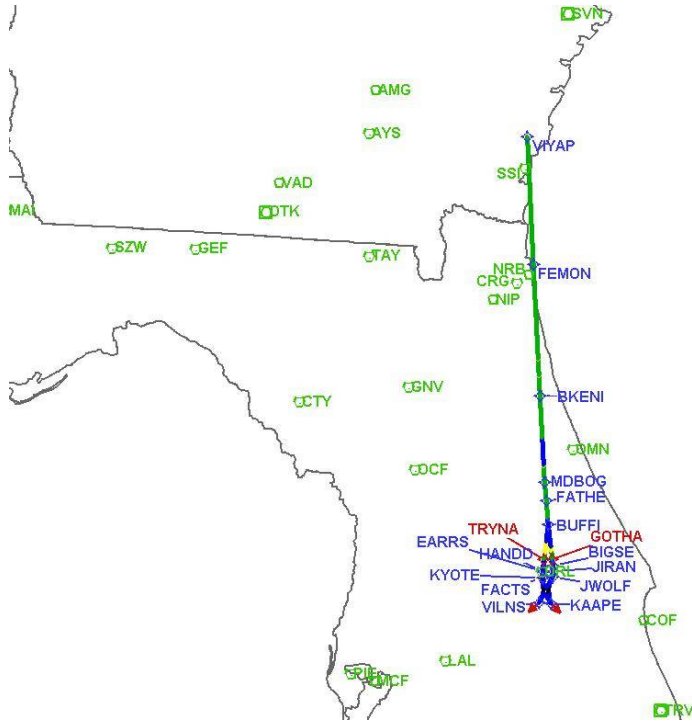
### DME Error





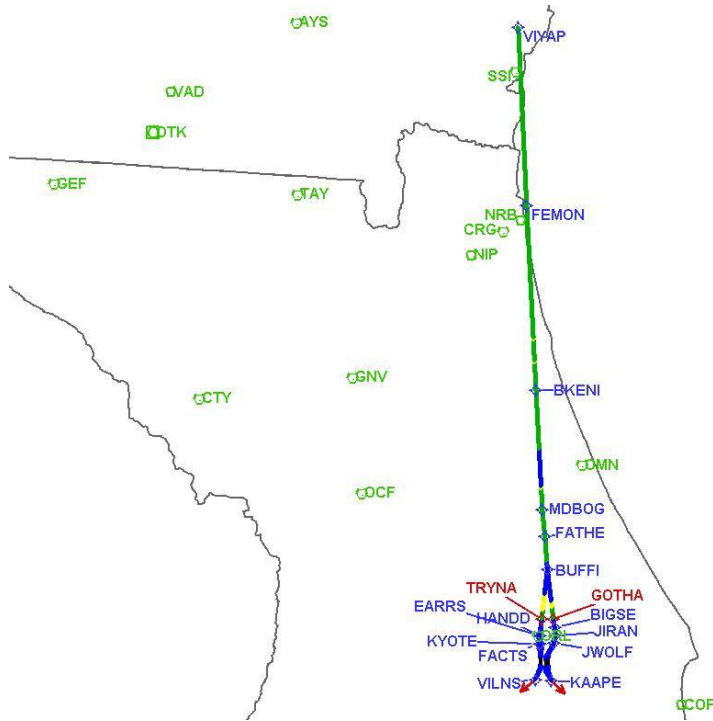
DME DME Assessment Results for FATHE4 path KMCO:RW35R:DER\_JWOLF

Graphic Depiction 1



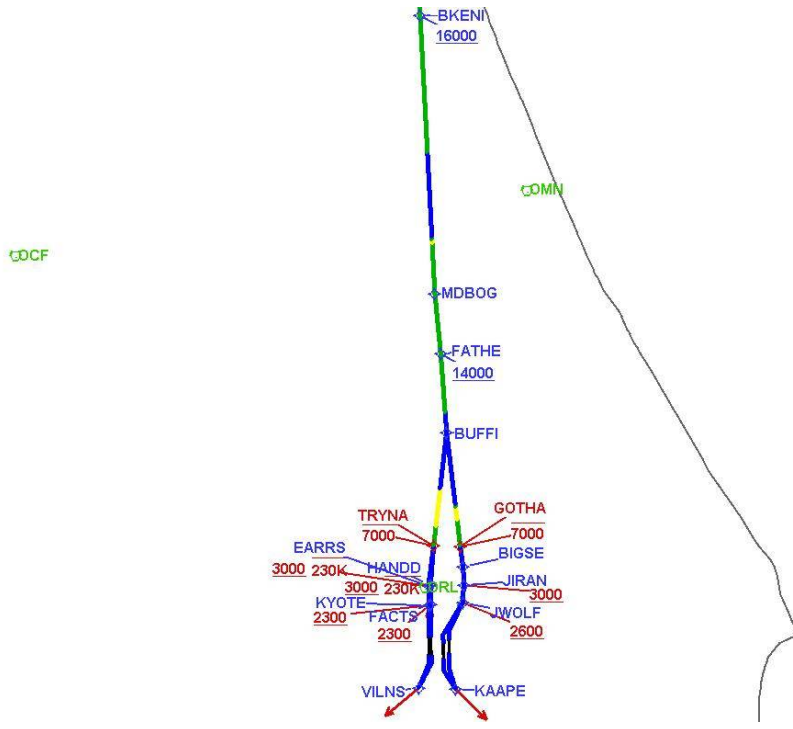
# DME DME Assessment Results for FATHE4 path KMCO:RW35R:DER\_JWOLF

Graphic Depiction 2



# DME DME Assessment Results for FATHE4 path KMCO:RW35R:DER\_JWOLF

Graphic Depiction 3



## DME DME Assessment Results for FATHE4 path KMCO:RW36L:DER\_BUFFI

Results Summary	
Flyability:	Completed
DME/DME:	Completed - No Critical DMEs
Name:	Mark CTR Thompson
Project File:	C:\Users\Mark CTR Thompson\OneDrive - Federal Aviation Administration\Desktop\RNAV Projects\RNAV Projects 2025\MCO SIDs\MCO FATHE SID\DME\KMCO FATHE4 (RNAV) SID DME_241105.tgs
Output File:	C:\Users\Mark CTR Thompson\OneDrive - Federal Aviation Administration\Desktop\RNAV Projects\RNAV Projects 2025\MCO SIDs\MCO FATHE SID\DME\KMCO [IFPA] FATHE4 20241105_0829 EST\KMCO-RW36L-DER_BUFFI\KMCO FATHE4 SID RW36L BUFFI 20241105_0829 EST.pdf
Procedure Name:	FATHE4
Software: DmeDmePlugin:	7.4.0
Date/Time:	11/05/2024 08:29 EST
Databases:	MITRE 3DEP 3 arcsec

Failures
No Failures

Warnings
No Warnings

Informational
No Informational

Notes For Flight Check
None

Flight Plan							
Name	Type	Lat/Lon	Altitude (ft)	VNAV Mode	Ground Speed (kts)	Turn Type	Leg Type
KMCO:RW36L:DER	WP	N28° 26' 53.86", W081° 19' 37.11"	92.5	VNAV	130	FLY_OVER	TF
KYOTE	WP	N28° 30' 35.80", W081° 19' 39.50"	2300	VNAV	200	FLY_BY	TF
EARRS	WP	N28° 32' 47.62", W081° 19' 40.52"	2500	VNAV	230	FLY_BY	TF
TRYNA	WP	N28° 37' 23.73", W081° 18' 59.57"	4000	VNAV	230	FLY_BY	TF
BUFFI	WP	N28° 50' 26.35", W081° 17' 18.07"	4000	VNAV	200	FLY_BY	TF
Climb Gradient: 200.0 ft/NM							

Flyability	
Flight Type:	SID
Selected Airport:	KMCO [IFPA]
Climb Gradient:	200.0 ft/NM
Speeds:	130 at the Runway DER
	145 at the end of the VA or VI leg
	200 Ground Speed to 11000 FT
	240 Ground Speed to 18000 FT
	260 Ground Speed to 24000 FT
	340 Ground Speed above 24000 FT
Descent During a Turn:	Allowed
VNAV Mode:	Flight Plan

**DME DME Assessment Results for FATHE4 path KMCO:RW36L:DER\_BUFFI**

<b>DME/DME</b>	
RNP:	RNP 2
Flight Mode:	Manual
Line of Sight (DTED Level 0 Max):	Evaluated
Inertial Drift:	Enabled
Initial Drift:	0.558 NM
INS Drift Rate:	8.0 NM/Hour
Range Mode:	OSV
RNP Edges:	Evaluated
Min DME Range:	3.0 NM
DME Types:	DME, VOR-DME, VORTAC, TACAN
DME Include Angles:	30 to 150
Critical DMEs:	Allowed
DoD Facilities:	Included
Foreign Facilities:	Not included
High DMEs:	Included
Low DMEs:	Included
Terminal DMEs:	Included
Flight Check DMEs:	Not selected
Higher Altitudes:	Not Evaluated
Near Maximum Altitude:	Not Evaluated
Automatic ESVs:	Not enabled
Disabled DMEs:	None

<b>DME/DME (Continued)</b>										
<b>DMEs Used</b>										
#	Name	Lat/Lon	MAGVAR	Range	Type	Source	Critical	Status	Time	Distance
1	OMN	N29° 18' 11.70", W081° 06' 45.71"	0.0 E	130	H		NO	Enabled	16.4 %	18.1 %
2	OCF	N29° 10' 38.92", W082° 13' 34.80"	0.0 E	40	L		NO	Enabled	25 %	27.6 %
3	LAL	N27° 59' 10.31", W082° 00' 50.06"	1.0 E	130	H		NO	Enabled	25 %	27.6 %
4	ORL	N28° 32' 33.80", W081° 20' 06.05"	0.0 E	130	H		NO	Enabled	20.6 %	22.7 %

<b>Flight Check DME Selection</b>						
Distance [NM]	Selected DMEs					Alternate
0.0						
10.5	LAL	OCF				
11.7	LAL	OCF	ORL			
12.7	LAL	OCF	OMN	ORL		
17.1						

<b>Inertial Drift Segments</b>			
#	Start Location	End Location	Length [NM]
1	N28° 26' 56.01", W081° 19' 37.13"	N28° 37' 23.73", W081° 18' 59.57"	10.49
2	N28° 43' 56.95", W081° 18' 08.62"	N28° 50' 26.35", W081° 17' 18.07"	6.5153

<b>Available DMEs by Waypoints</b>			
Waypoint Before	Waypoint After	DME List	Suggested DMEs
KMCO:RW36L:DER	KYOTE		
KYOTE	EARRS		
EARRS	TRYNA	OCF, LAL	
TRYNA	BUFFI	OMN, OCF, LAL, ORL	

**DME DME Assessment Results for FATHE4 path KMCO:RW36L:DER\_BUFFI**

**User Data Files**

#	File Name
None	

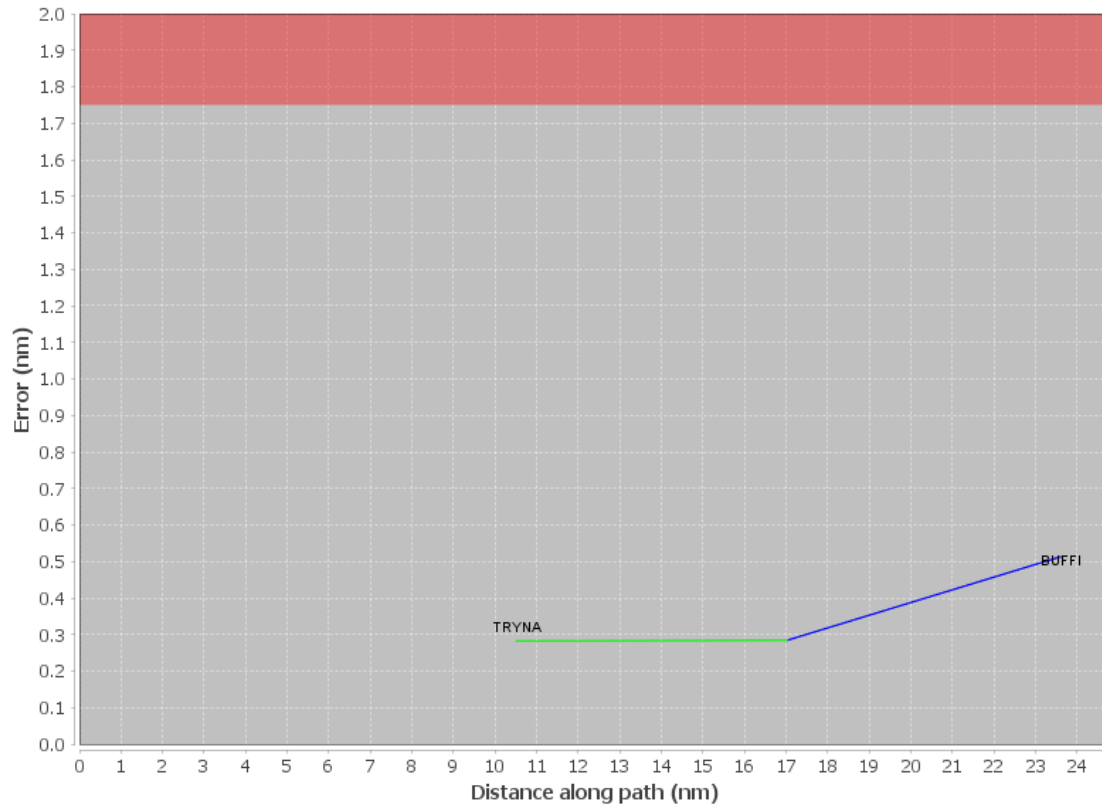
None

**User DMEs**

#	Name	Lat/Lon	MAGVAR	Range	Elevation [ft]	Frequency	Replaces	Status
1	OCF FAA 714002-32 OCF	N29° 10' 38.92", W082° 13' 34.80"	0.0 E	40	78.3	113.7	OCF FAA 714002-32	
	ESV:	Bearing [True]: 50.0° to 120.0° Bearing [Mag]: 50.0° to 120.0°				Arc Distance: Out to 80.0 NM Altitude: 5000.0 to 18000.0 ft		
2	GNV FAA 704230-48 GNV	N29° 41' 31.61", W082° 16' 22.70"	4.0 W	40	127.5	116.2	GNV FAA 704230-48	
	ESV:	Bearing [True]: 116.0° to 141.0° Bearing [Mag]: 120.0° to 145.0°				Arc Distance: Out to 72.0 NM Altitude: 5000.0 to 10200.0 ft		
3	LAL FAA 704224-41 LAL	N27° 59' 10.31", W082° 00' 50.06"	1.0 E	130	133.8	116.0	LAL FAA 704224-41	
	ESV:	Bearing [True]: 360.0° to 77.0° Bearing [Mag]: 359.0° to 76.0°				Arc Distance: Out to 70.0 NM Altitude: 3000.0 to 14700.0 ft		
4	OCF FAA 714002-18 OCF	N29° 10' 38.92", W082° 13' 34.80"	0.0 E	40	78.3	113.7	OCF FAA 714002-18	
	ESV:	Bearing [True]: 117.0° to 180.0° Bearing [Mag]: 117.0° to 180.0°				Arc Distance: Out to 80.0 NM Altitude: 4000.0 to 20000.0 ft		

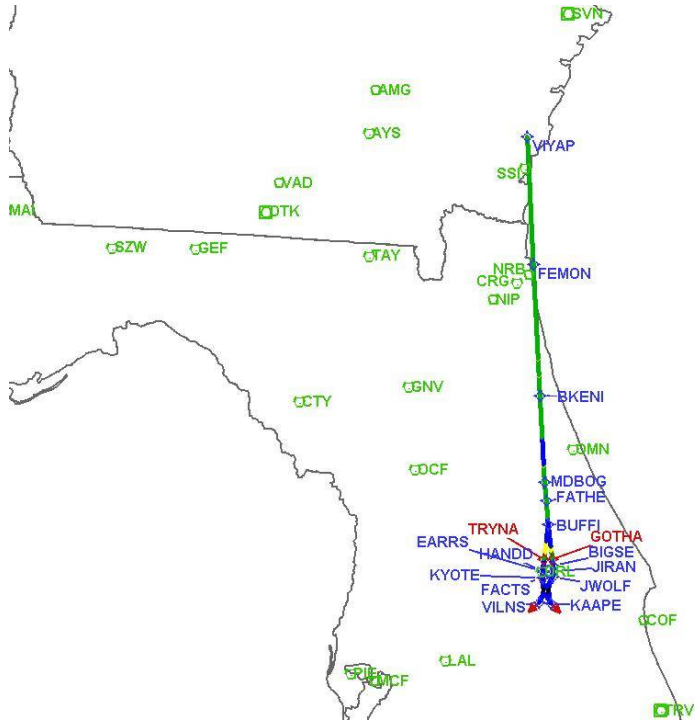
# DME DME Assessment Results for FATHE4 path KMCO:RW36L:DER\_BUFFI

## DME Error



DME DME Assessment Results for FATHE4 path KMCO:RW36L:DER\_BUFFI

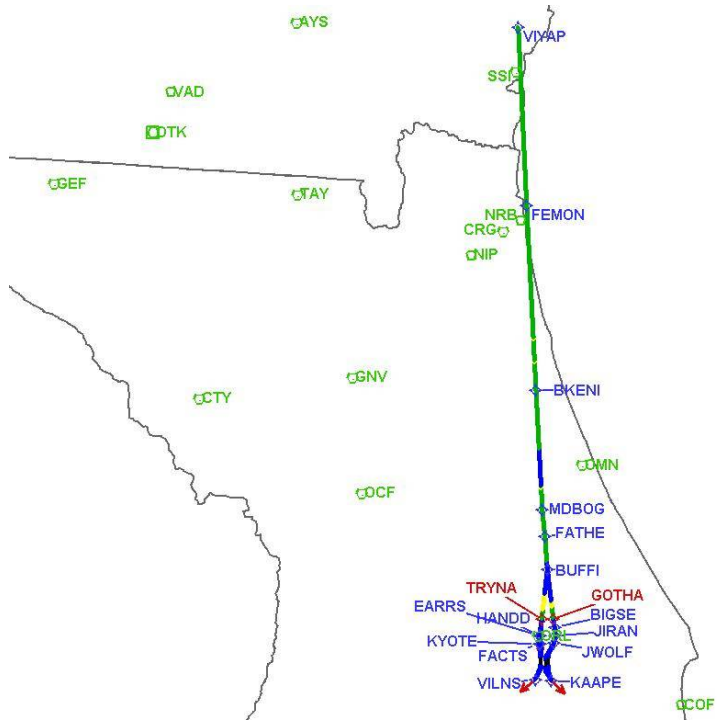
Graphic Depiction 1





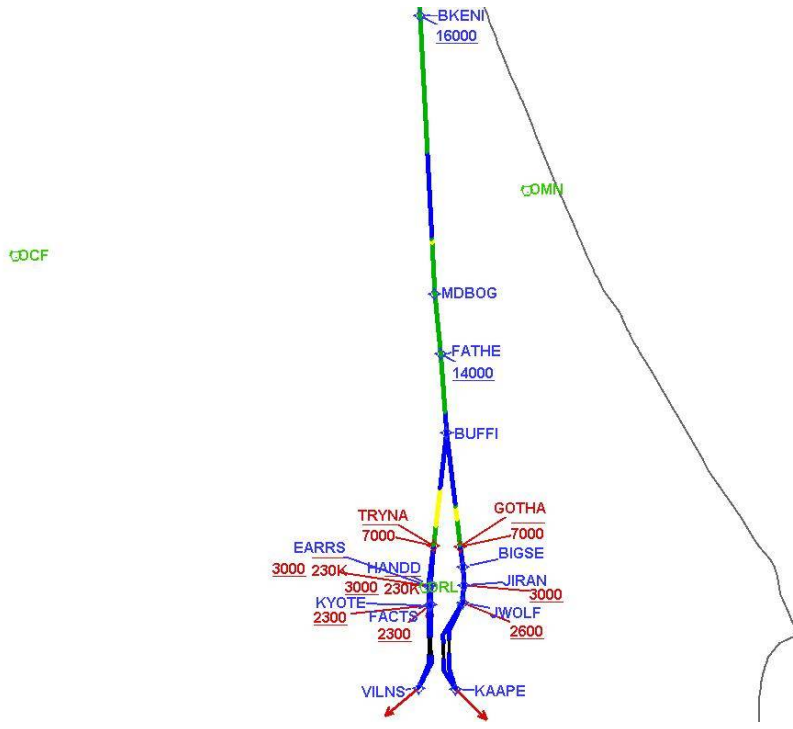
# DME DME Assessment Results for FATHE4 path KMCO:RW36L:DER\_BUFFI

Graphic Depiction 2



# DME DME Assessment Results for FATHE4 path KMCO:RW36L:DER\_BUFFI

Graphic Depiction 3



**DME DME Assessment Results for FATHE4 path KMCO:RW36R:DER\_TRYNA**

<b>Results Summary</b>	
Flyability:	Completed
DME/DME:	Completed - No Critical DMEs
Name:	Mark CTR Thompson
Project File:	C:\Users\Mark CTR Thompson\OneDrive - Federal Aviation Administration\Desktop\RNAV Projects\RNAV Projects 2025\MCO SIDs\MCO FATHE SID\DME\KMCO FATHE4 (RNAV) SID DME_241105.tgs
Output File:	C:\Users\Mark CTR Thompson\OneDrive - Federal Aviation Administration\Desktop\RNAV Projects\RNAV Projects 2025\MCO SIDs\MCO FATHE SID\DME\KMCO [IFPA] FATHE4 20241105_0829 EST\KMCO-RW36R-DER_TRYNA\KMCO FATHE4 SID RW36R TRYNA 20241105_0829 EST.pdf
Procedure Name:	FATHE4
Software: DmeDmePlugin:	7.4.0
Date/Time:	11/05/2024 08:29 EST
Databases:	MITRE 3DEP 3 arcsec

<b>Failures</b>
No Failures

<b>Warnings</b>
No Warnings

<b>Informational</b>
No Informational

<b>Notes For Flight Check</b>
None

<b>Flight Plan</b>							
Name	Type	Lat/Lon	Altitude (ft)	VNAV Mode	Ground Speed (kts)	Turn Type	Leg Type
KMCO:RW36R:DER	WP	N28° 26' 54.00", W081° 19' 20.30"	92.4	VNAV	130	FLY_OVER	TF
FACTS	WP	N28° 30' 39.75", W081° 19' 22.71"	2300	VNAV	200	FLY_BY	TF
HANDD	WP	N28° 32' 54.38", W081° 19' 23.95"	2500	VNAV	230	FLY_BY	TF
TRYNA	WP	N28° 37' 23.73", W081° 18' 59.57"	4000	VNAV	230	FLY_BY	TF
Climb Gradient: 200.0 ft/NM							

<b>Flyability</b>	
Flight Type:	SID
Selected Airport:	KMCO [IFPA]
Climb Gradient:	200.0 ft/NM
Speeds:	130 at the Runway DER
	145 at the end of the VA or VI leg
	200 Ground Speed to 11000 FT
	240 Ground Speed to 18000 FT
	260 Ground Speed to 24000 FT
	340 Ground Speed above 24000 FT
Descent During a Turn:	Allowed
VNAV Mode:	Flight Plan

**DME DME Assessment Results for FATHE4 path KMCO:RW36R:DER\_TRYNA**

<b>DME/DME</b>	
RNP:	RNP 2
Flight Mode:	Manual
Line of Sight (DTED Level 0 Max):	Evaluated
Inertial Drift:	Enabled
Initial Drift:	0.558 NM
INS Drift Rate:	8.0 NM/Hour
Range Mode:	OSV
RNP Edges:	Evaluated
Min DME Range:	3.0 NM
DME Types:	DME, VOR-DME, VORTAC, TACAN
DME Include Angles:	30 to 150
Critical DMEs:	Allowed
DoD Facilities:	Included
Foreign Facilities:	Not included
High DMEs:	Included
Low DMEs:	Included
Terminal DMEs:	Included
Flight Check DMEs:	Not selected
Higher Altitudes:	Not Evaluated
Near Maximum Altitude:	Not Evaluated
Automatic ESVs:	Not enabled
Disabled DMEs:	None

<b>DME/DME (Continued)</b>										
<b>DMEs Used</b>										
#	Name	Lat/Lon	MAGVAR	Range	Type	Source	Critical	Status	Time	Distance
1	OCF	N29° 10' 38.92", W082° 13' 34.80"	0.0 E	40	L		NO	Enabled		
2	LAL	N27° 59' 10.31", W082° 00' 50.06"	1.0 E	130	H		NO	Enabled		

<b>Flight Check DME Selection</b>					
Distance [NM]	Selected DMEs				Alternate
0.0					
10.5	LAL	OCF			

<b>Inertial Drift Segments</b>			
#	Start Location	End Location	Length [NM]
1	N28° 26' 56.15", W081° 19' 20.33"	N28° 37' 23.73", W081° 18' 59.57"	10.463

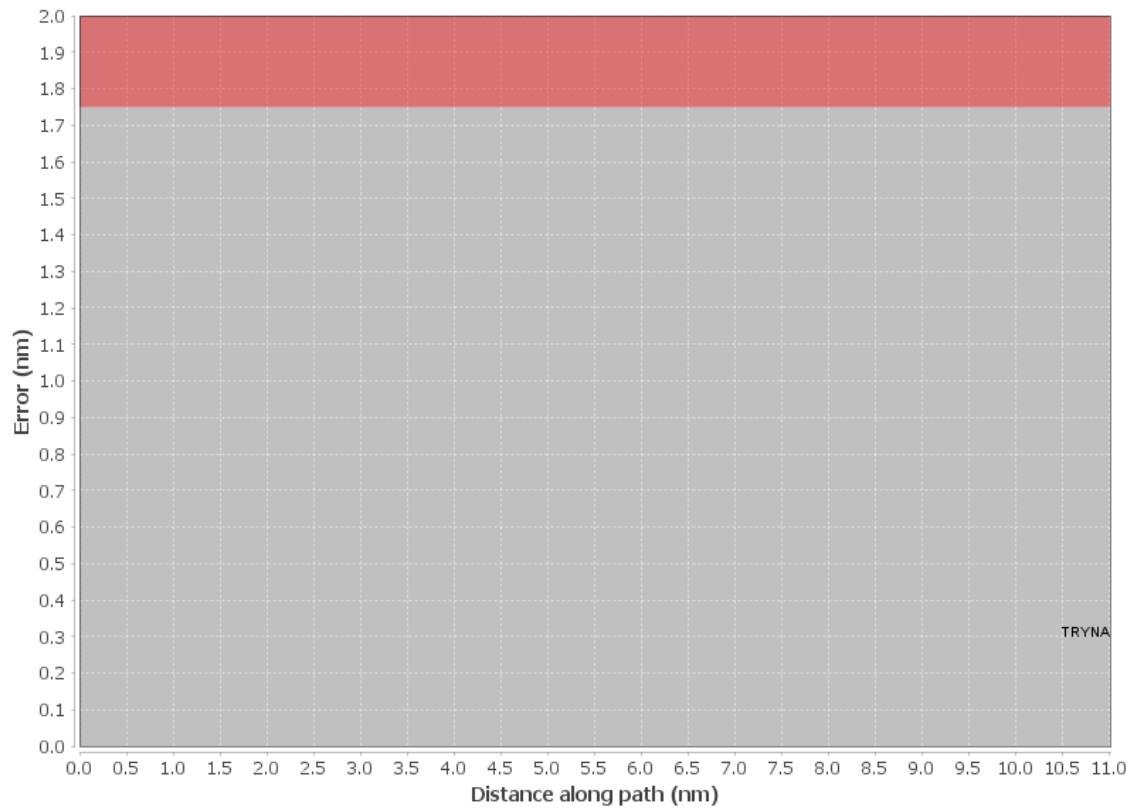
<b>Available DMEs by Waypoints</b>			
Waypoint Before	Waypoint After	DME List	Suggested DMEs
KMCO:RW36R:DER	FACTS		
FACTS	HANDD		
HANDD	TRYNA	OCF, LAL	

**DME DME Assessment Results for FATHE4 path KMCO:RW36R:DER\_TRYNA**

<b>User Data Files</b>								
#	File Name							
None								
<b>User DMEs</b>								
#	Name	Lat/Lon	MAGVAR	Range	Elevation [ft]	Frequency	Replaces	Status
1	OCF FAA 714002-32 OCF	N29° 10' 38.92", W082° 13' 34.80"	0.0 E	40	78.3	113.7	OCF FAA 714002-32	
ESV:		Bearing [True]: 50.0° to 120.0° Bearing [Mag]: 50.0° to 120.0°				Arc Distance: Out to 80.0 NM Altitude: 5000.0 to 18000.0 ft		
2	GNV FAA 704230-48 GNV	N29° 41' 31.61", W082° 16' 22.70"	4.0 W	40	127.5	116.2	GNV FAA 704230-48	
ESV:		Bearing [True]: 116.0° to 141.0° Bearing [Mag]: 120.0° to 145.0°				Arc Distance: Out to 72.0 NM Altitude: 5000.0 to 10200.0 ft		
3	LAL FAA 704224-41 LAL	N27° 59' 10.31", W082° 00' 50.06"	1.0 E	130	133.8	116.0	LAL FAA 704224-41	
ESV:		Bearing [True]: 360.0° to 77.0° Bearing [Mag]: 359.0° to 76.0°				Arc Distance: Out to 70.0 NM Altitude: 3000.0 to 14700.0 ft		
4	OCF FAA 714002-18 OCF	N29° 10' 38.92", W082° 13' 34.80"	0.0 E	40	78.3	113.7	OCF FAA 714002-18	
ESV:		Bearing [True]: 117.0° to 180.0° Bearing [Mag]: 117.0° to 180.0°				Arc Distance: Out to 80.0 NM Altitude: 4000.0 to 20000.0 ft		

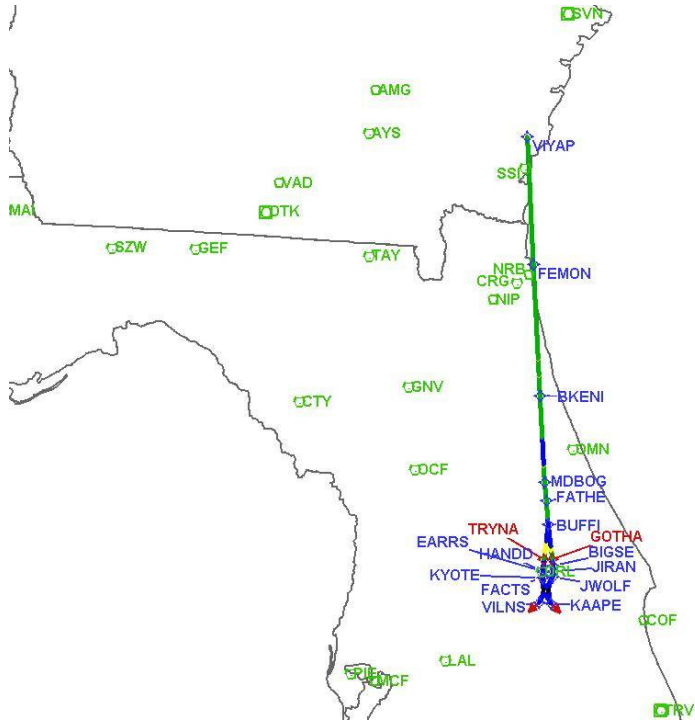
# DME DME Assessment Results for FATHE4 path KMCO:RW36R:DER\_TRYNA

## DME Error



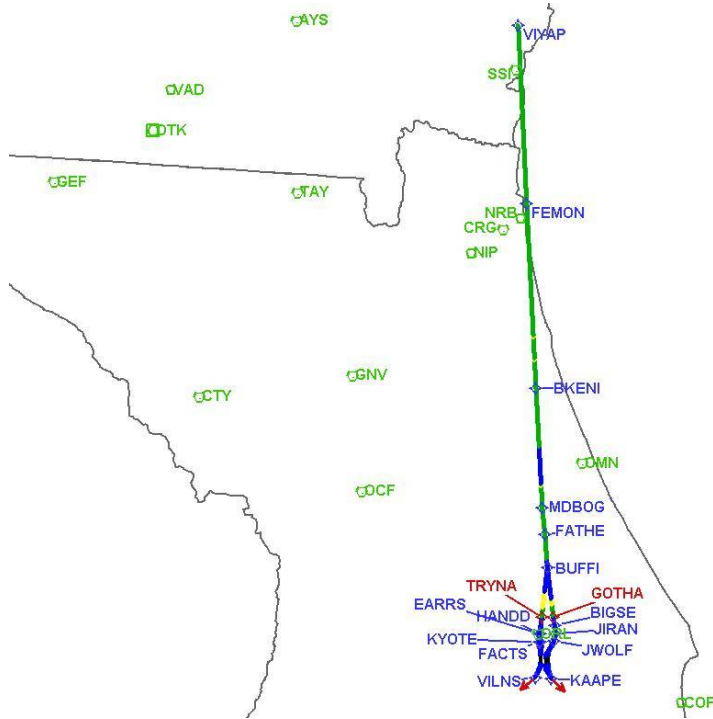
# DME DME Assessment Results for FATHE4 path KMCO:RW36R:DER\_TRYNA

Graphic Depiction 1



# DME DME Assessment Results for FATHE4 path KMCO:RW36R:DER\_TRYNA

Graphic Depiction 2





# DME DME Assessment Results for FATHE4 path KMCO:RW36R:DER\_TRYNA

Graphic Depiction 3

