

FEDERAL AVIATION ADMINISTRATION
 FLIGHT STANDARDS SERVICE
 STANDARD TERMINAL ARRIVAL (STAR)

Bearings, headings, courses, tracks and radials are magnetic. Elevations and altitudes are in feet, MSL. Altitudes are minimum altitudes unless otherwise indicated.
 Ceilings are in feet above airport elevation. Distances are in nautical miles. Visibilities are in statute miles or feet RVR unless otherwise indicated.

Arrival Name QWENN (RNAV)	Number SIX	STAR Computer Code QWENN.QWENN6	Superseded Number FIVE	Dated 08/17/2017	Effective Date
-------------------------------------	----------------------	---	----------------------------------	----------------------------	----------------

TRANSITION ROUTES:

Transition Name	Transition Computer Codes	From FIX/NAVAID	To FIX/NAVAID	Course	Distance	MEA	MOCA	MAA	Crossing Altitudes / Fixes
BRYCE CANYON	BCE.QWENN6	BCE VORTAC	BCE VORTAC						
			RRICH	355.19	64.27	13400	13400		
			MARNN	355.16	30.37	12400	12400		
			NEEBO	355.26	41.28	10600	10600		AT 14000
			QWENN	352.65	26.84	10500	10000		AT 11000
MILFORD	MLF.QWENN6	MLF VORTAC	MLF VORTAC						
			BEVRR	011.70	31.27	10500	10500		
			DTA VORTAC	011.86	30.00	10500	10500		
			UINTA	012.96	20.70	10500	10500		
			FRNZY	013.07	23.20	10500	10500		AT 14000
			QWENN	006.01	26.30	10500	10500		AT 11000

ARRIVAL ROUTE DESCRIPTION:

FROM QWENN ON TRACK 344.30. EXPECT RADAR VECTORS FOR ILS OR RNAV APPROACH TO RWY 34L/R, 35 OR RADAR VECTORS TO FINAL APPROACH COURSE.

PBN REQUIREMENT NOTES:

RNAV 1 - GPS

EQUIPMENT REQUIREMENT NOTES:

RADAR REQUIRED

PROCEDURAL DATA NOTES:

NOTE: JET AIRCRAFT ONLY

NOTE: GPS REQUIRED.

FIXES AND/OR HOLDING PATTERNS:

CHART HOLDING AT BEVRR: HOLD S, RT, 011.70 INBOUND, 12 NM LEGS.

CHART HOLDING AT FRNZY: HOLD S, LT, 013.87 INBOUND, 10 NM LEGS.

CHART HOLDING AT NEEBO: HOLD S, LT, 355.04 INBOUND, 10 NM LEGS.

CHART HOLDING AT RRIC: HOLD S, LT, 355.16 INBOUND, 12 NM LEGS.

COMMUNICATIONS:

CHART: SALT LAKE ARTCC

FEDERAL AVIATION ADMINISTRATION
 FLIGHT STANDARDS SERVICE
 STANDARD TERMINAL ARRIVAL (STAR)

Bearings, headings, courses, tracks and radials are magnetic. Elevations and altitudes are in feet, MSL. Altitudes are minimum altitudes unless otherwise indicated.
 Ceilings are in feet above airport elevation. Distances are in nautical miles. Visibilities are in statute miles or feet RVR unless otherwise indicated.

Arrival Name	Number	STAR Computer Code	Superseded Number	Dated	Effective Date
QWENN (RNAV)	SIX	QWENN.QWENN6	FIVE	08/17/2017	

AIRPORTS SERVED:

AIRPORT ID	CITY	STATE
SLC	SALT LAKE CITY	UT

LOST COMMUNICATIONS PREFERENCES:
 AFTER QWENN, PROCEED ON THE ILS OR LOC RWY 34L APPROACH.

REMARKS:

ADDITIONAL FLIGHT DATA:
 DME/DME ASSESSMENT: UNSAT.
 MAG VAR: SLC 11E/2020
 CHART AT QWENN TERMINUS: SLC LDG RWY 34L/R, 35

FLIGHT INSPECTED BY:	ORGANIZATION:	DATE:	Flight Inspected Signature: _____
DEVELOPED BY:			Developed By Signature: _____
Mark Whitney	SLC ARTCC	01/05/2024	
APPROVED BY:			Approved By Signature: _____
BEV BORDY	AJV-A430		

- CHANGES:**
1. REMOVED EXPECT ALTITUDES FROM FRNZY AND NEEBO WAYPOINTS AND ADDED SPEED AND ALTITUDE RESTRICTIONS AT FRNZY AND NEEBO WAYPOINTS OF AT 14000 AND AT 250 KIAS.
 2. REMOVED FFU VORTAC HOLDING PATTERN.
 3. MOVED QWENN WP 7.91 NM NORTH AND ADDED SPEED RESTRICTION OF AT 230 KIAS.
 4. REMOVED PLAGE AND KAMMP WAYPOINTS AND FFU VORTAC.
 5. UPDATED ARRIVAL ROUTE DESCRIPTION TO ACCOUNT FOR NEW LOCATION OF QWENN WP; RWY TRANSITIONS REMOVED AND REPLACED WITH COMMON POINT.
 6. CHANGED PBN REQUIREMENTS FROM RNAV 1 AND DME/DME/IRU OR GPS REQUIRED TO RNAV 1-GPS.
 7. REMOVED CRITICAL DME NOTES FOR NON-GPS EQUIPPED AIRCRAFT.
 8. ADDED RADAR REQUIRED TO EQUIPMENT REQUIREMENT NOTES.
 9. CHARTED SALT LAKE ARTCC IN COMMUNICATIONS.
 10. ADDED TERMINUS DATA.
 11. ADDED MOCAS TO BRYCE CANYON AND MILFORD EN ROUTE TRANSTIONS.
 12. REVISED ALL EN ROUTE TRANSITION MEA VALUES.
 13. CHANGED LOST COMM FROM: AT PLAGE, TURN LEFT DIRECT TO FFU VORTAC AND HOLD. MAINTAIN 11000 TO: AFTER QWENN, PROCEED ON THE ILS OR LOC RWY 34L APPROACH.



FEDERAL AVIATION ADMINISTRATION
 FLIGHT STANDARDS SERVICE
 STANDARD TERMINAL ARRIVAL (STAR)

Bearings, headings, courses, tracks and radials are magnetic. Elevations and altitudes are in feet, MSL. Altitudes are minimum altitudes unless otherwise indicated.
 Ceilings are in feet above airport elevation. Distances are in nautical miles. Visibilities are in statute miles or feet RVR unless otherwise indicated.

Arrival Name	Number	STAR Computer Code	Superseded Number	Dated	Effective Date
QWENN (RNAV)	SIX	QWENN.QWENN6	FIVE	08/17/2017	

- 14. REMOVED AIRPORT NAME FROM AIRPORTS SERVED AND ADDED AIRPORT ID; REMOVED K IDENT FROM 17.1 FORM.
- 15. CHANGED TURBOJET NOTE TO REFLECT JET.
- 16. STAR CHANGED TO GPS ONLY.

REASONS:

- 1. ATC REQUEST, EXPECT ALTITUDES NO LONGER ALLOWED PER CRITERIA.
- 2. ATC REQUEST NO LONGER NEEDED.
- 3. ATC REQUEST TO ACCOMMODATE APPROACHES TO ALL RUNWAYS AND MATCH STAR TERMINUS TO APPROACH IAF.
- 4. ATC REQUEST.
- 5. IAW FAAO 8260.19J 4-5-12.c.
- 6-7. NEW DME/DME ASSESSMENT INSUFFICIENT NAVAID COVERAGE.
- 8. IAW 8260.19J DOCUMENTATION STANDARDS.
- 9. ATC REQUEST
- 10. IAW FAAO 8260.19J 4-5-2.h.(2) STAR TERMINUS DATA.
- 11. MOCA DOCUMENTED IAW 8260.19J 4-5-12.b.(8)
- 12. ATC REQUEST.
- 13. ATC REQUEST TO ALIGN WITH OTHER AMENDMENTS.
- 14-15. CURRENT DOCUMENTATION STANDARDS.
- 16. DME/DME ASSESMENT UNSAT.

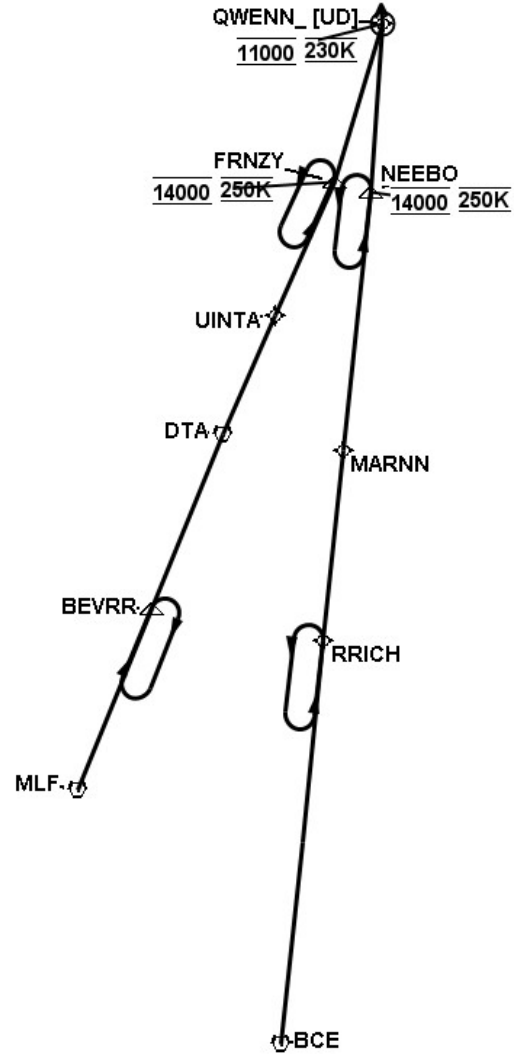


FEDERAL AVIATION ADMINISTRATION
 FLIGHT STANDARDS SERVICE
 STANDARD TERMINAL ARRIVAL (STAR)

Bearings, headings, courses, tracks and radials are magnetic. Elevations and altitudes are in feet, MSL. Altitudes are minimum altitudes unless otherwise indicated.
 Ceilings are in feet above airport elevation. Distances are in nautical miles. Visibilities are in statute miles or feet RVR unless otherwise indicated.

Arrival Name	Number	STAR Computer Code	Superseded Number	Dated	Effective Date
QWENN (RNAV)	SIX	QWENN.QWENN6	FIVE	08/17/2017	

Graphic Depiction 1



FEDERAL AVIATION ADMINISTRATION
 FLIGHT STANDARDS SERVICE
 STAR (DATA RECORD)

Arrival Name QWENN (RNAV)	Number SIX	STAR Computer Code QWENN.QWENN6		Superseded Number FIVE		Dated 08/17/2017	Effective Date		
<u>FIX/NAVAID</u>	<u>LAT/LONG</u>	<u>C</u>	<u>FO/FB</u>	<u>LEG TYPE</u>	<u>TC</u>	<u>DIST (NM)</u>	<u>ALTITUDE</u>	<u>SPEED</u>	<u>REMARKS</u>
En Route Transition									
BCE VORTAC	374121.07N / 1121814.05W	Y		IF					BCE.QWENN6
RRICH	384518.53N / 1120922.12W	Y	FB	TF	006.19	64.27			
MARNN	391531.88N / 1120510.40W	Y	FB	TF	006.16	30.37			
NEEBO	395636.11N / 1115919.13W	Y	FB	TF	006.26	41.28	AT 14000	AT 250K	
QWENN	402324.41N / 1115704.78W	Y	FO	TF	003.65	26.84	AT 11000	AT 230K	
En Route Transition									
MLF VORTAC	382137.28N / 1130047.64W	Y		IF					MLF.QWENN6
BEVRR	385029.15N / 1124520.83W	Y	FB	TF	022.70	31.27			
DTA VORTAC	391808.14N / 1123020.01W	Y	FB	TF	022.86	30.00			
UINTA	393703.28N / 1121927.35W	Y	FB	TF	023.96	20.70			
FRNZY	395814.82N / 1120708.78W	Y	FB	TF	024.07	23.20	AT 14000	AT 250K	
QWENN	402324.41N / 1115704.78W	Y	FO	TF	017.01	26.30	AT 11000	AT 230K	
Common Route									
QWENN	402324.41N / 1115704.78W	Y		IF			AT 11000	AT 230K	QWENN.QWENN6
KSLC				FM	355.30				

