

|                                       |                         |                                |                                     |   |  |
|---------------------------------------|-------------------------|--------------------------------|-------------------------------------|---|--|
| Flight Procedures Cover Page          | Task Action:<br>P-NOTAM | Task Type:<br>IAP              | Estimated Chart Date:<br>07/09/2026 | APWS Task ID:<br>292E1332133B46DDADE7B0B768A9920C | APWS Project ID:<br>03052FEF6F8E498784149908D2FD6A4E |
| Procedure:<br>RNAV (GPS) RWY 6 ORIG-B |                         | Enroute:<br>NO                 | Specialist:<br>Johnson, Timothy     |   | Agreement Number:                                    |
| Airport ID:<br>KCDN                   |                         |                                | Airport City:<br>CAMDEN             |   | State:<br>SC   |
| Facility ID:                          | Facility Type:          | Flight Inspection Remark Type: |                                     |   |  |

**Procedure Comments:**

Visibility Initiative (Garmin) - Update IAP visibility minimums IAW Order 8260.3, Chapter 3, Section 3-3. Visibility Minimums.

PROCESSED IAW TECHNICAL SUPPORT GROUP (AJF-17) MEMO DATED 07/07/2021, SUBJECT: GUIDANCE FOR PROCEDURAL CHANGES REQUIRING FLIGHT INSPECTION/VALIDATION.

CONTACT: CASEY HILL (405) 954-0624.



OLD

|  |                        |                             |   |
|--|------------------------|-----------------------------|---|
| WAAS<br>CH <b>86505</b><br><b>W06A</b> | APP CRS<br><b>057°</b> | Rwy Idg<br>TDZE<br>Apt Elev | <b>5000</b><br><b>302</b><br><b>302</b> |
|--|------------------------|-----------------------------|---|

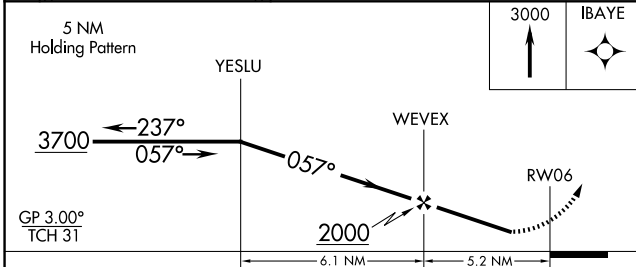
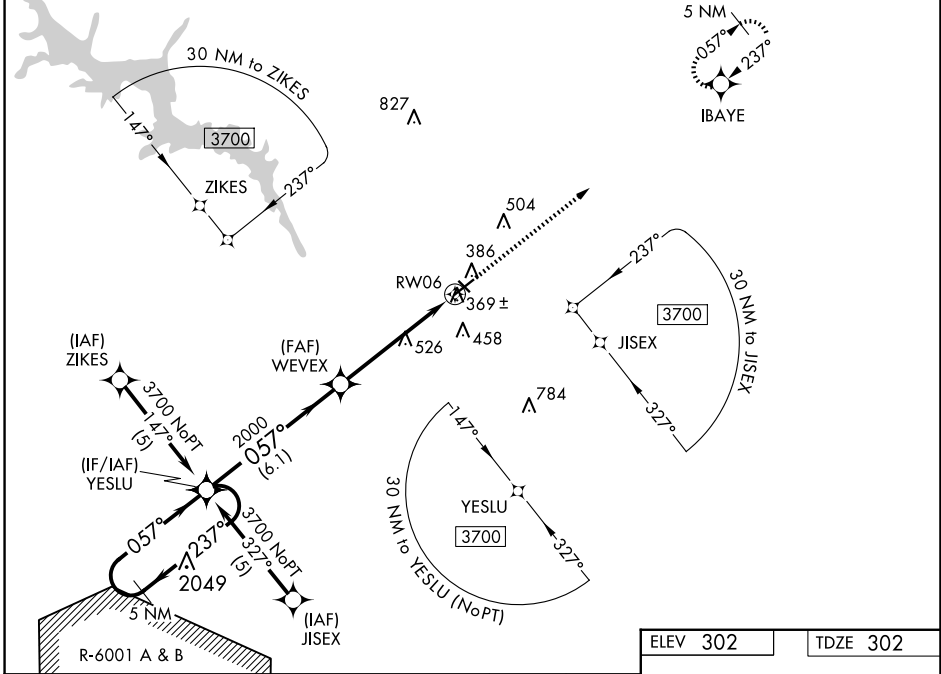
# RNAV (GPS) RWY 6

WOODWARD FLD (CDN)

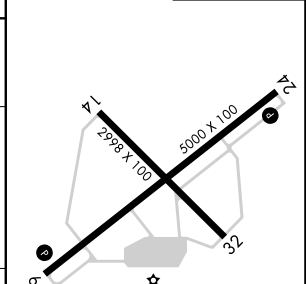
Baro-VNAV NA when using Columbia altimeter setting. When local altimeter setting not received, use Columbia altimeter setting and increase all DAs/MDAs 100 feet; increase LNAV and Circling visibility Cats C/D ¼ SM. For uncompensated Baro-VNAV systems, procedure NA below -15°C (5°F) or above 48°C (118°F). DME/DME RNP-0.3 NA. Visibility reduction by helicopters NA.

MISSED APPROACH: Climb to 3000 direct IBAYE and hold.

|                            |                                      |                                 |
|----------------------------|--------------------------------------|---------------------------------|
| AWOS-3PT<br><b>119.975</b> | SHAW APP CON *<br><b>125.4 318.1</b> | UNICOM<br><b>123.0 (CTAF) 0</b> |
|----------------------------|--------------------------------------|---------------------------------|



|          |          |
|----------|----------|
| ELEV 302 | TDZE 302 |
|----------|----------|



| CATEGORY     | A                   | B                   | C                   | D                   |
|--------------|---------------------|---------------------|---------------------|---------------------|
| LPV DA       | 582-1 280 (300-1)   |                     |                     |                     |
| LNAV/VNAV DA | 713-1½ 411 (500-1½) |                     |                     |                     |
| LNAV MDA     | 780-1 478 (500-1)   | 780-1¼ 478 (500-1¼) | 780-1½ 478 (500-1½) | 780-1½ 478 (500-1½) |
| CIRCLING     | 840-1 538 (600-1)   | 840-1½ 538 (600-1½) | 900-2 598 (600-2)   | 900-2 598 (600-2)   |

MIRL Rwy 6-24 0  
REIL Rwy 6 and 24 0

SE-2, 19 FEB 2026 to 19 MAR 2026

SE-2, 19 FEB 2026 to 19 MAR 2026