

Flight Procedures Cover Page	Task Action: Abbreviated Amendment	Task Type: IAP	Estimated Chart Date: 12/28/2023	APWS Task ID: 294760ED23F046A48530F81FEEA0C6B9	APWS Project ID: 10E28889C7434947A3802BFD8ABD9A49
Procedure: RNAV (GPS) RWY 13 AMDT 1D		Enroute: NO	Specialist: Raimi, Kamarudini		Agreement Number:
Airport ID: KSPI			Airport City: SPRINGFIELD		State: IL
Facility ID:	Facility Type:	Flight Inspection Remark Type:			

**Procedure Comments:**

UTILIZED ACTIVE AIRNAV DATA FOR KSPI RWY 13.

DELETED NOTE: PROCEDURE NA FOR ARRIVAL AT GINIA VIA V50 WESTBOUND; VICTOR ROUTE REMOVED DUE TO VOR MON.

PROCESSED IAW TECHNICAL SUPPORT GROUP (AJF-17) MEMO DATED 07/07/2021, SUBJECT: GUIDANCE FOR PROCEDURAL CHANGES REQUIRING FLIGHT INSPECTION/VALIDATION.

CONTACT DAVID TEFFETELLER: AJV-A430, 202-267-5177.



WAAS CH <b>99616</b> <b>W13A</b>	APP CRS <b>128°</b>	Rwy Idg TDZE Apt Elev	<b>7217</b> <b>592</b> <b>598</b>
--	------------------------	-----------------------------	---



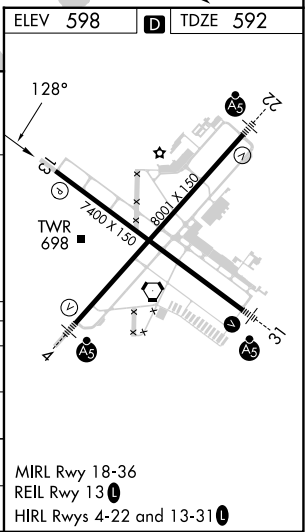
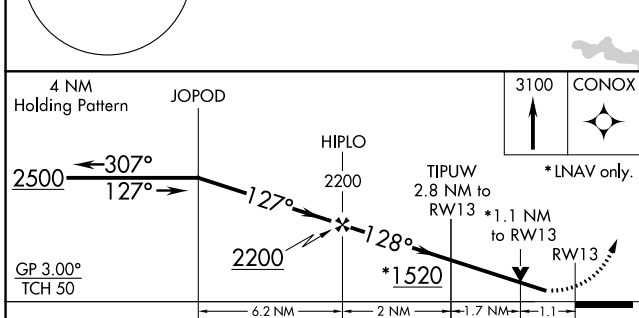
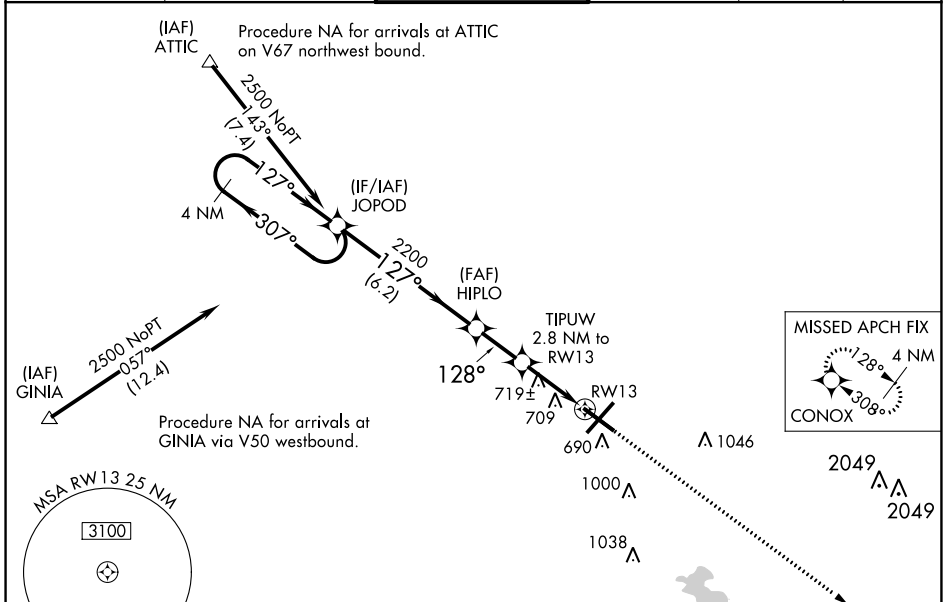
# RNAV (GPS) RWY 13

ABRAHAM LINCOLN CAPITAL (SPI)

**⚠** For uncompensated Baro-VNAV systems, LNAV/VNAV NA below -16°C (4°F) or above 47°C (116°F). DME/DME RNP-0.3 NA. Visibility reduction by helicopters NA. When local altimeter setting not received, use Lincoln altimeter setting: increase all DA 57 feet and MDA 60 feet, increase LPV and LNAV/VNAV all Cats visibility ¼ SM, and increase LNAV and Circling Cats C and D visibility ¼ SM. Baro-VNAV NA when using Lincoln altimeter setting. VDP NA when using Lincoln altimeter setting.

**ASR** MISSED APPROACH: Climb to 3100 direct CONOX and hold.

ATIS <b>127.65 270.1</b>	SAINT LOUIS APP CON * <b>126.15 323.0</b>	SPRINGFIELD TOWER * <b>121.3 (CTAF) 257.8</b>	GND CON <b>121.9 348.6</b>	CLNC DEL <b>121.7</b>	UNICOM <b>122.95</b>
-----------------------------	--	--	-------------------------------	--------------------------	-------------------------



CATEGORY	A	B	C	D
LPV DA	875-1 283 (300-1)			
LNAV/VNAV DA	1011-1½ 419 (500-1½)			
LNAV MDA	980-1 388 (400-1)		980-1¼ 388 (400-1¼)	
CIRCLING	1040-1 442 (500-1)	1100-1 502 (600-1)	1360-2¼ 762 (800-2¼)	1380-2½ 782 (800-2½)

EC-3, 13 JUL 2023 to 10 AUG 2023

EC-3, 13 JUL 2023 to 10 AUG 2023