

Flight Procedures Cover Page	Task Action: FLIGHT CHECK	Task Type: IAP	Estimated Chart Date: 03/19/2026	APWS Task ID: 29772D67CB5F4B59A00A7B7CD1F4DA56	APWS Project ID: 68D2A7DBAFF843749CCEAB69B6661410
Procedure: RNAV (GPS) RWY 27 ORIG		Enroute: NO	Specialist: Malone, Tevar		Agreement Number:
Airport ID: K59			Airport City: ATCHISON		State: KS
Facility ID:	Facility Type:	Flight Inspection Remark Type: New FC Slot			

Procedure Comments:  
PENDING DATA USED

NEW RUNWAY: RWY 09/27

EXISTING RUNWAY REMOVED: RWY 06/34 .

KMZ\_1 IS THE PROCEDURE WITHOUT LPV MISSED PEN.

KMZ\_2 IS THE PROCEDURE SHOWING THE LPV MISSED PEN.

POC: ALLAN WILL, 405-954-6103



WAAS CH <b>99647</b> <b>W27A</b>	APP CRS <b>268°</b>	Rwy Ldg TDZE Apt Elev	<b>4000</b> <b>1061</b> <b>1064</b>
--	------------------------	-----------------------------	---

# RNAV (GPS) RWY 27

AMELIA EARHART (K59)

RNP APCH - GPS.

**NA** For uncompensated Baro-VNAV systems, LNAV/VNAV NA below -17°C or above 54°C. Baro-VNAV and VDP NA when using MCI altimeter setting. Helicopter visibility reduction below 3/4 SM NA. When local altimeter setting not received, use MCI altimeter setting and increase LPV DA to 1380 feet; increase LNAV/VNAV DA to 1395 feet; increase all MDAs 80 feet and LNAV visibility Cat C 3/8 SM.

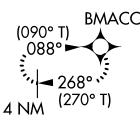
MISSED APPROACH: Climb to 3000 direct BMACC and hold.

AWOS-3PT  
**123.675**

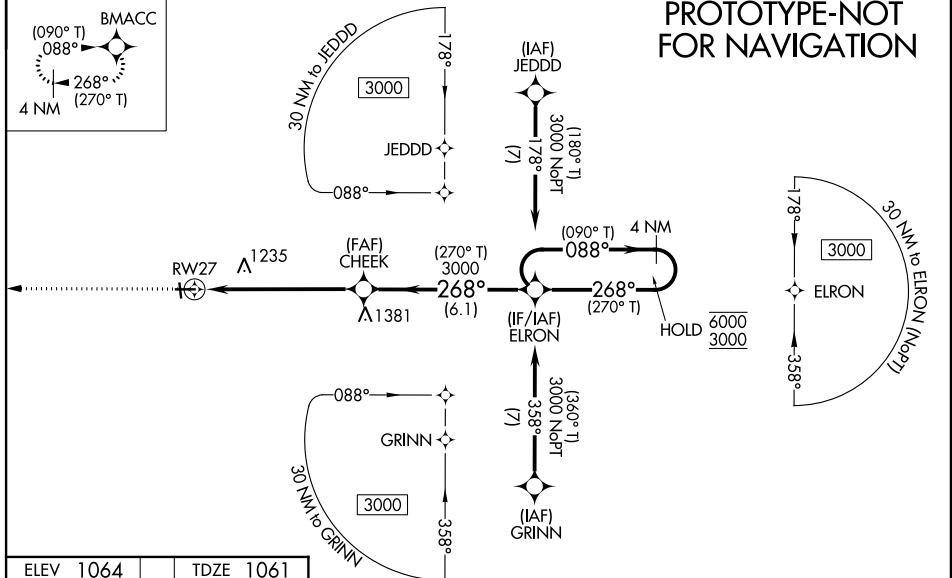
ST JOSEPH APP CON ★  
**120.35 360.8**

UNICOM  
**122.8 (CTAF) 0**

MISSED APCH FIX

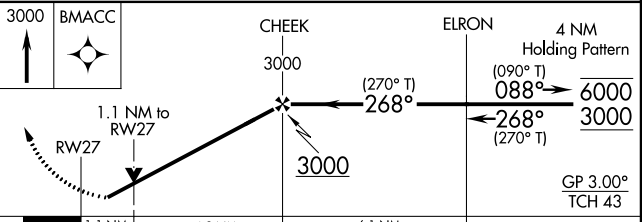


**PROTOTYPE-NOT FOR NAVIGATION**

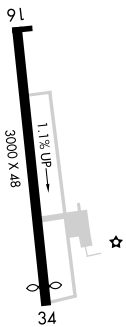


ELEV 1064

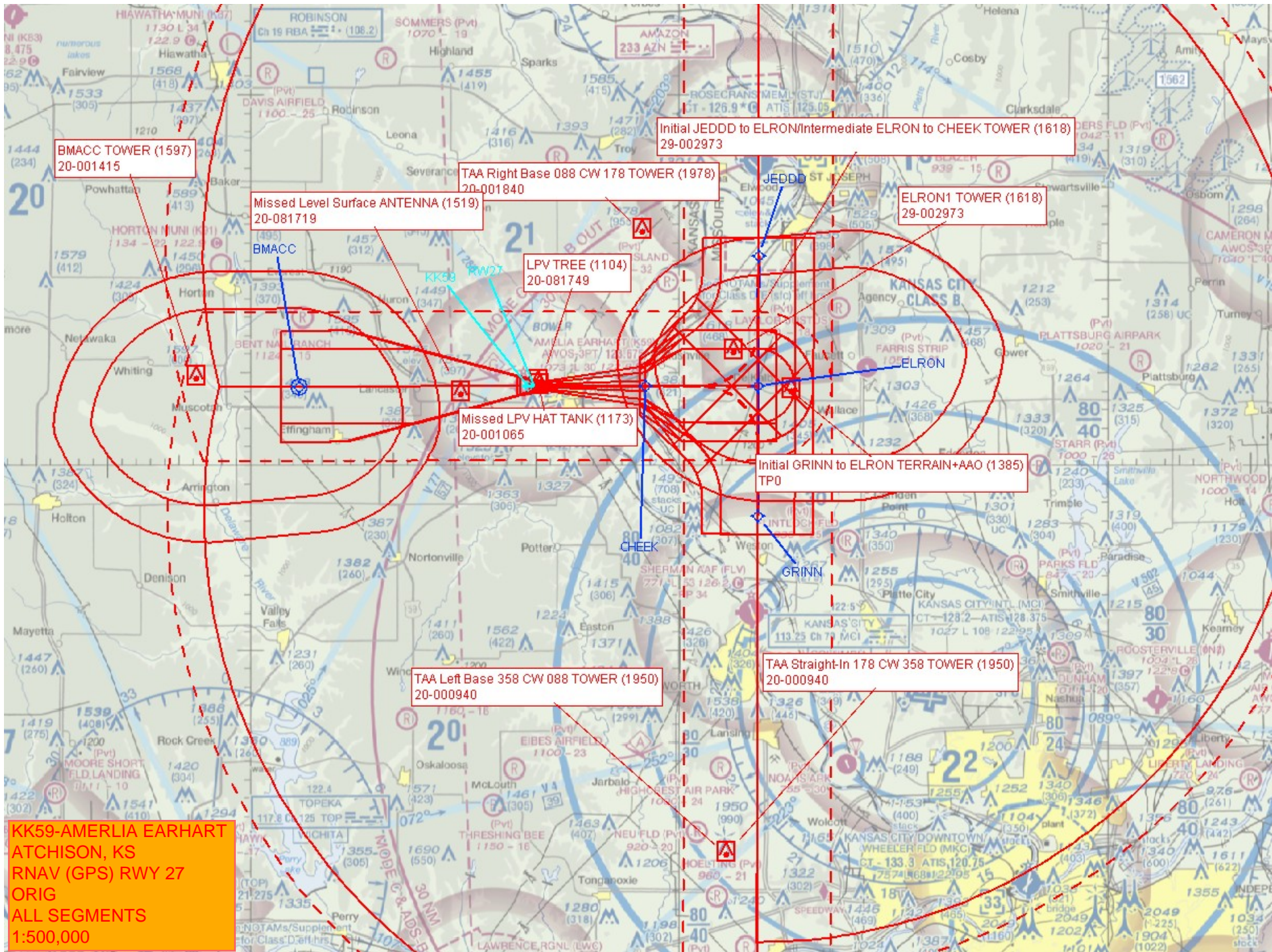
TDZE 1061



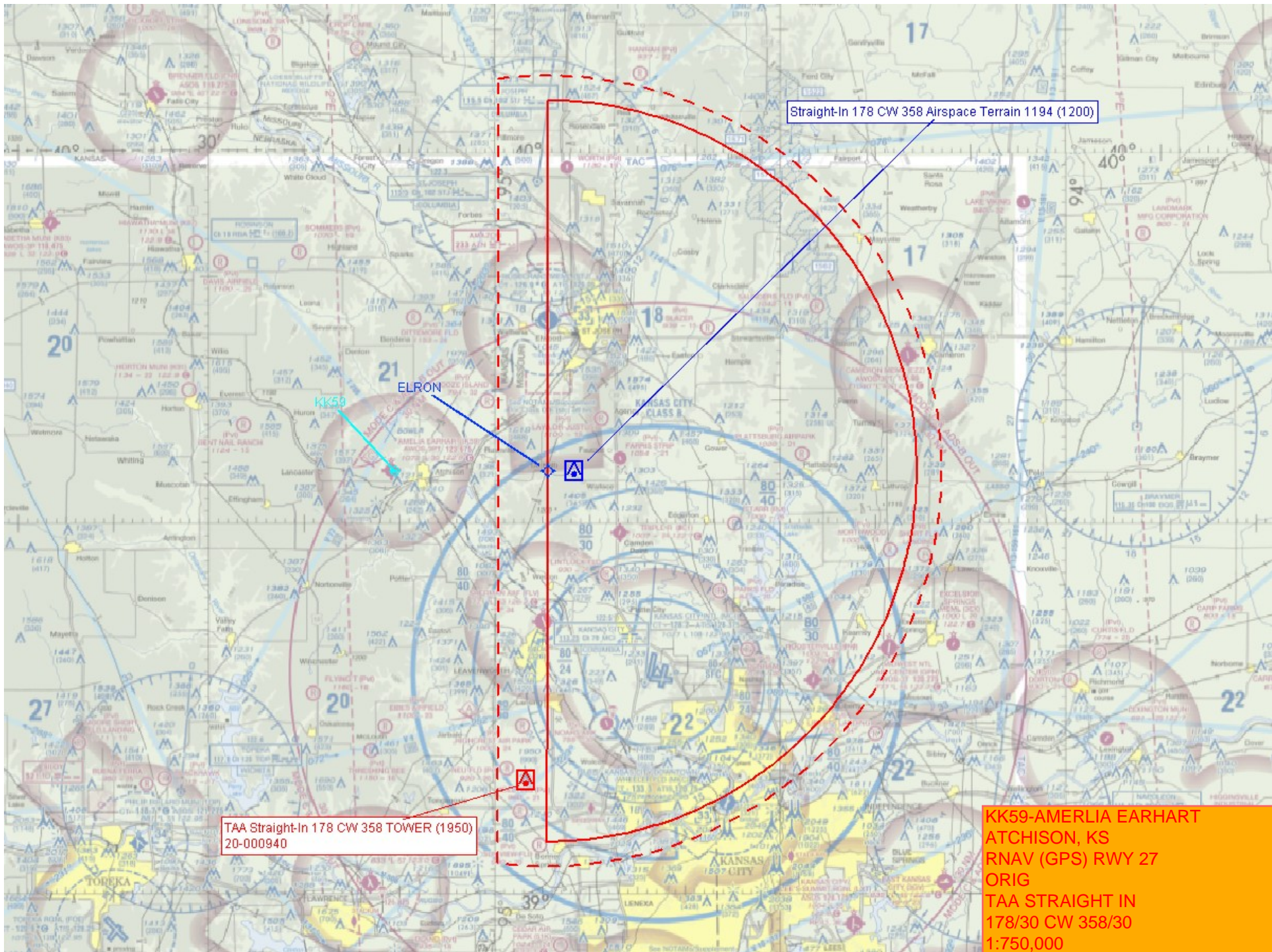
CATEGORY	A	B	C	D
LPV DA		1312-1	251 (300-1)	NA
LNAV/VNAV DA		1327-1	266 (300-1)	NA
LNAV MDA		1440-1	379 (400-1)	NA
CIRCLING	1520-1	456 (500-1)	1580-1½ 516 (600-1½)	NA



URL Rwy 16-34 0



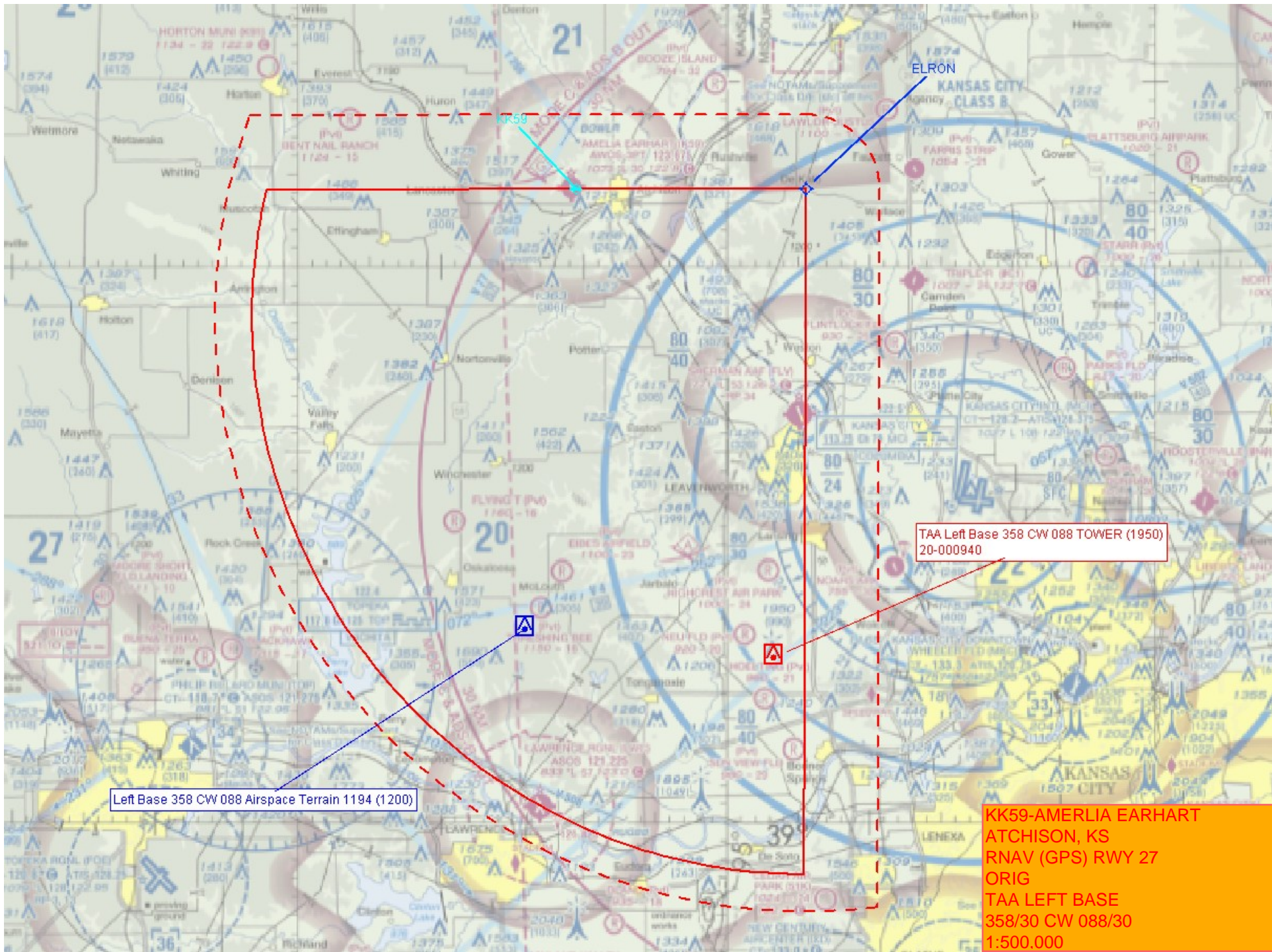
KK59-AMERLIA EARHART  
 ATCHISON, KS  
 RNAV (GPS) RWY 27  
 ORIG  
 ALL SEGMENTS  
 1:500,000

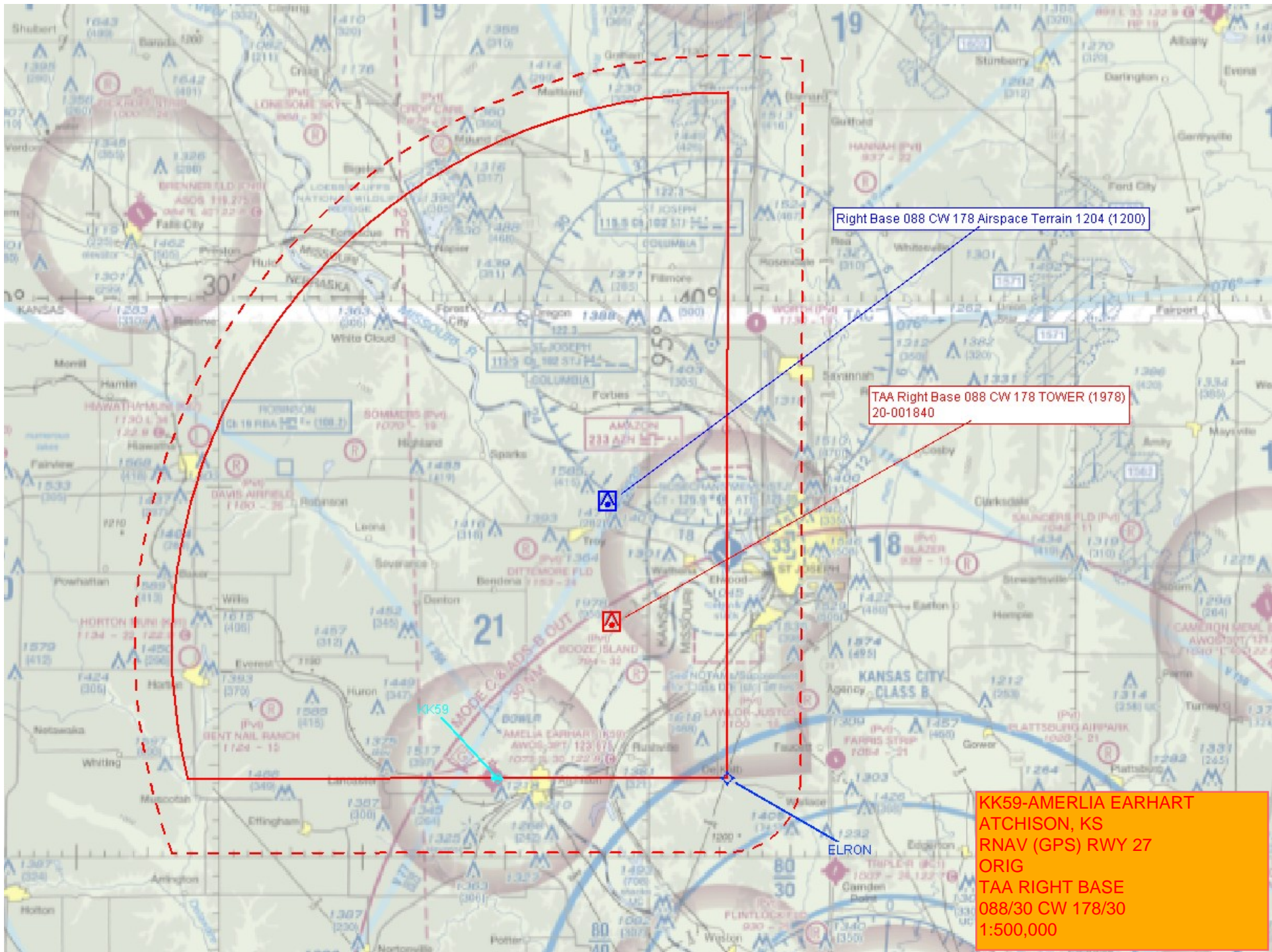


Straight-In 178 CW 358 Airspace Terrain 1194 (1200)

TAA Straight-In 178 CW 358 TOWER (1950)  
20-000940

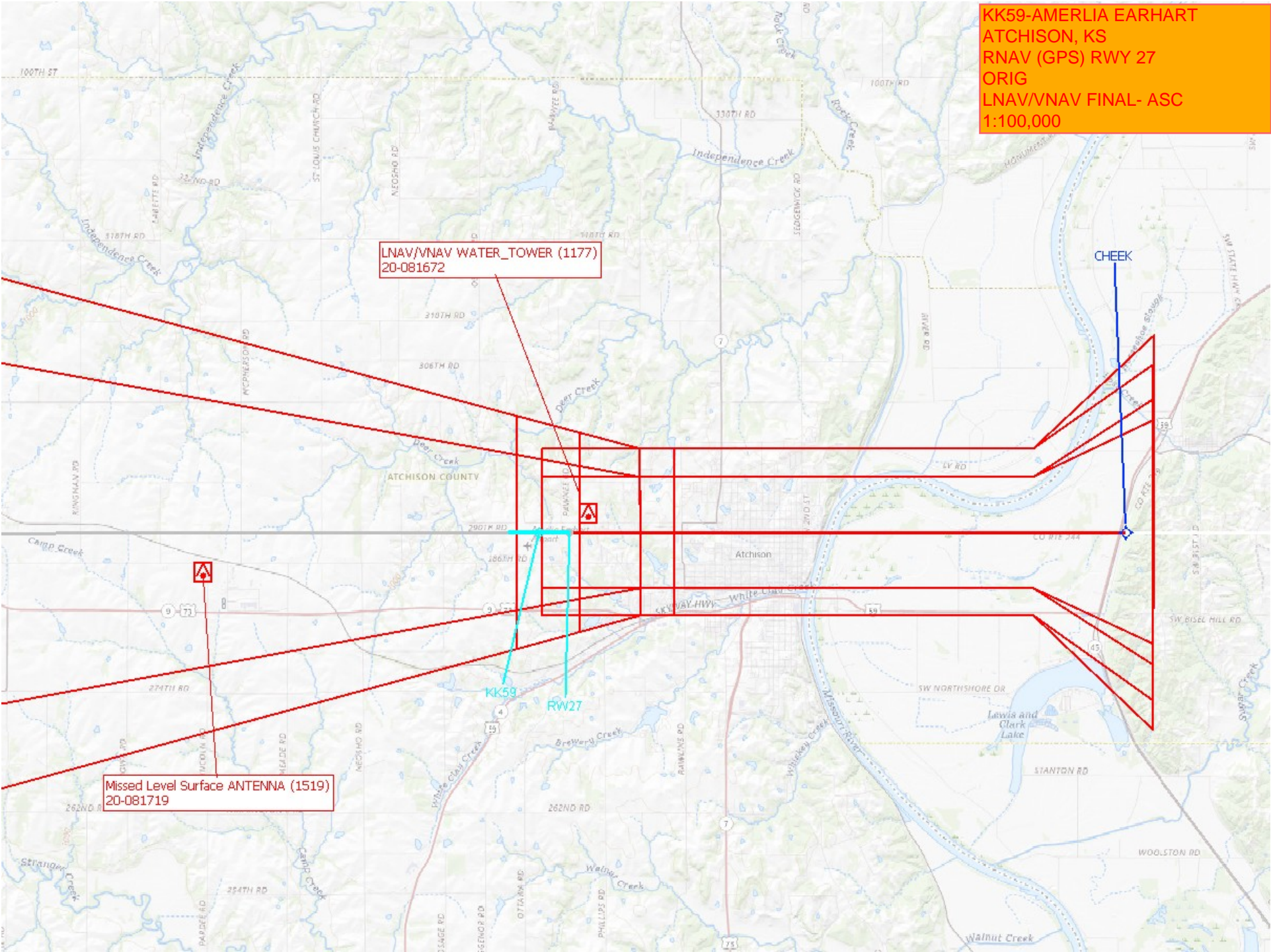
KK59-AMERLIA EARHART  
ATCHISON, KS  
RNAV (GPS) RWY 27  
ORIG  
TAA STRAIGHT IN  
178/30 CW 358/30  
1:750,000







**KK59-AMERLIA EARHART  
ATCHISON, KS  
RNAV (GPS) RWY 27  
ORIG  
LNAV/VNAV FINAL- ASC  
1:100,000**



LNAV/VNAV WATER\_TOWER (1177)  
20-081672

Missed Level Surface ANTENNA (1519)  
20-081719



KK59

RW27

CHEEK

