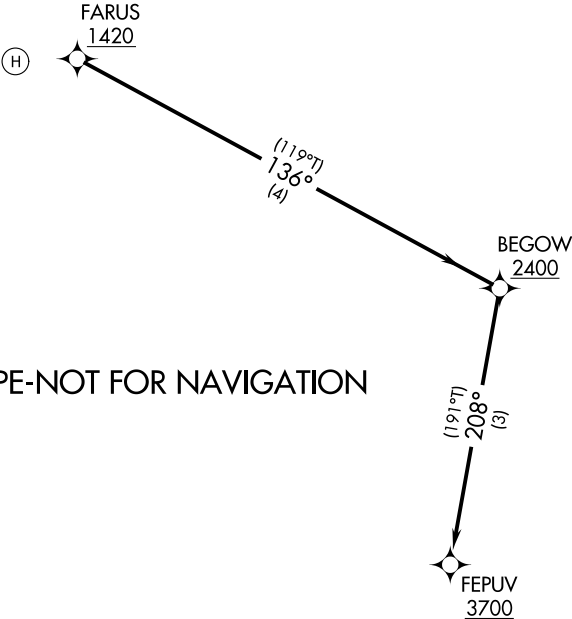


OB1 AWOS-AV
119.075
PORTLAND DEP CON ★
128.35 299.2
BOSTON CENTER
128.2 263.05

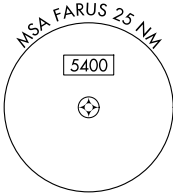
RNP 0.3 - GPS. AP.

TOP ALTITUDE:
ASSIGNED BY ATC

PROTOTYPE-NOT FOR NAVIGATION



- NOTE: Pilot must ensure CDI sensitivity is set to 0.3 NM.
CDI may be reset to 1 NM after FEPUV as applicable.
- NOTE: Use of Rumford Community Hospital requires permission of the owner.
Use of this procedure requires specific authorization by FAA Flight Standards.
- NOTE: Use OB1 altimeter setting; when not received, use AUG altimeter setting
and cross FARUS at or above 1520.



NOTE: Chart not to scale.

DEPARTURE ROUTE DESCRIPTION

- VFR SEGMENT: VFR climb to FARUS, cross FARUS at or above 1420 on track 136°.
- IFR SEGMENT: From FARUS, climb on track 136° to cross BEGOW at or above 2400,
then on track 208° to cross FEPUV at or above 3700.