

WAAS CH 97644	APP CRS 319°	Rwy Ldg TDZE 121	3263
W32A		Apt Elev 123	

RNAV (GPS) RWY 32

MANSFIELD MUNI (1B9)

RNP APCH - GPS.

⚠ Circling NA to Rws 4 and 22. Circling Rwy 14 NA at night. For uncompensated Baro-VNAV systems, LNAV/VNAV NA below -15°C or above 54°C. Baro-VNAV NA when using OWD altimeter setting. When local altimeter setting not received, use OWD altimeter setting: increase LPV DA to 432 feet; increase LNAV/VNAV DA to 427 feet; increase all MDAs 40 feet.

MISSED APPROACH:
Climb to 700 then climbing right turn to 3000 direct WHYBE and hold.

AWOS-3PT
118.675

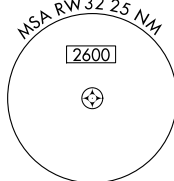
BOSTON APP CON
124.1

UNICOM
123.0 (CTAF)

MISSED APCH FIX

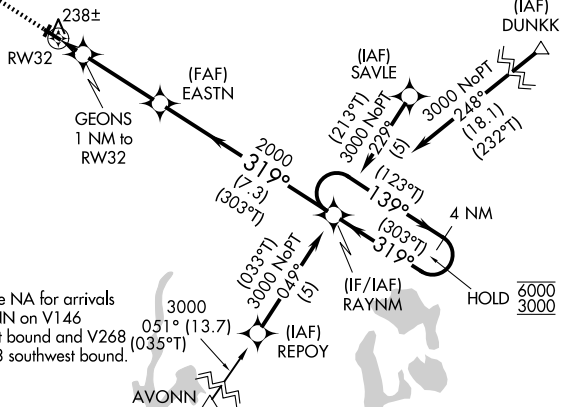
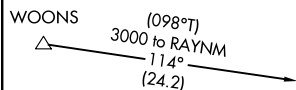


PROTOTYPE-NOT FOR NAVIGATION



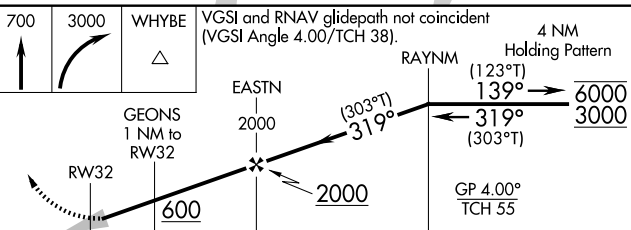
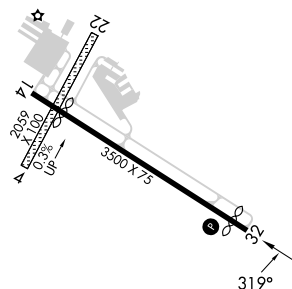
Procedure NA for arrivals at DUNKK on V141 southeast bound.

Procedure NA for arrivals at WOONS on V3 and T224 southwest bound.



Procedure NA for arrivals at AVONN on V146 northwest bound and V268 and T358 southwest bound.

ELEV 123	TDZE 121
----------	----------



CATEGORY	A	B	C	D
LPV DA	395-7/8	274 (300-7/8)		NA
LNAV/VNAV DA	390-7/8	269 (300-7/8)		NA
LNAV MDA	500-1	379 (400-1)		NA
CIRCLING	600-1	477 (500-1)		NA