

Flight Procedures Cover Page	Task Action: FLIGHT CHECK	Task Type: IAP	Estimated Chart Date: 05/14/2026	APWS Task ID: 2AEDBEABF3134496986D7F1E8DBBDBB1	APWS Project ID: AA3BB4933A8E464CBA9524067FFA95D8
Procedure: RNAV (GPS) RWY 32 AMDT 3		Enroute: NO	Specialist: Bruce, Richard		Agreement Number:
Airport ID: 1B9			Airport City: MANSFIELD		State: MA
Facility ID:	Facility Type:	Flight Inspection Remark Type: New FC Slot			

Procedure Comments:

RESTORED NIGHT OPS TO RWY 32.

ACTIVE DATA USED FOR 1B9 AIRPORT AND RUNWAYS.

CONTACT RAKE MCGRAW, AJV-A422, (405) 954-8711.



WAAS CH <b>97644</b> <b>W32A</b>	APP CRS <b>319°</b>	Rwy Ldg TDZE Apt Elev	<b>3263</b> <b>121</b> <b>123</b>
--	------------------------	-----------------------------	---

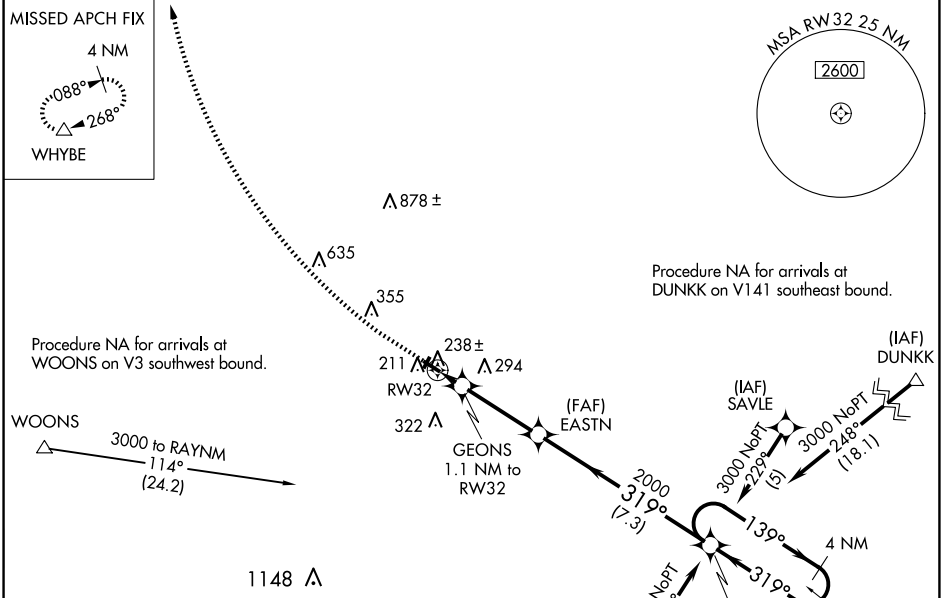
**OLD**

# RNAV (GPS) RWY 32

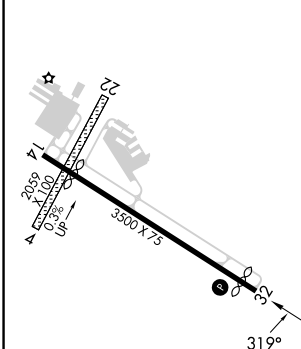
MANSFIELD MUNI (1B9)

RNP APCH - GPS.	MISSED APPROACH: Climb to 700 then climbing right turn to 3000 direct WHYBE and hold.
<p><b>⚠</b> Circling NA to Rwy 4 and 22. For uncompensated Baro-VNAV systems, LNAV/VNAV NA below -15°C or above 54°C. Baro-VNAV NA when using OWD altimeter setting. Procedure NA at night. When local altimeter setting not received, use OWD altimeter setting: increase LPV DA to 432 feet, LNAV/VNAV DA to 427 feet, and all MDAs 40 feet.</p>	

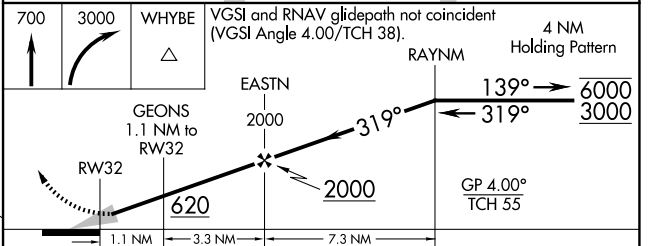
AWOS-3PT <b>118.675</b>	BOSTON APP CON <b>124.1</b>	UNICOM <b>123.0 (CTAF) 0</b>
----------------------------	--------------------------------	---------------------------------



ELEV 123	TDZE 121
----------	----------



700	3000	WHYBE	△
Procedure NA for arrivals at AVONNN on V146 northwest bound and V268 and T358 southwest bound.			
VGSi and RNAV glidepath not coincident (VGSi Angle 4.00/TCH 38).			



	CATEGORY	A	B	C	D
<input type="checkbox"/>	LPV DA	395-7/8	274 (300-7/8)		NA
<input type="checkbox"/>	LNAV/VNAV DA	390-7/8	269 (300-7/8)		NA
<input type="checkbox"/>	LNAV MDA	500-1	379 (400-1)		NA
<input checked="" type="checkbox"/>	CIRCLING	600-1	477 (500-1)		NA

NE-1, 30 OCT 2025 to 27 NOV 2025

NE-1, 30 OCT 2025 to 27 NOV 2025