

Flight Procedures Cover Page	Task Action: FLIGHT CHECK	Task Type: STAR	Estimated Chart Date: 03/19/2026	APWS Task ID: 2B581D85893043B4AB49DC4D44512F9D	APWS Project ID: DAD4510B216745D9AAA08DFB85B485EB
Procedure: KRATR (RNAV) THREE ARRIVAL		Enroute: YES	Specialist: Kuklish, Thomas		Agreement Number:
Airport ID: KPDX			Airport City: PORTLAND		State: OR
Facility ID:	Facility Type:	Flight Inspection Remark Type: New FC Slot			

Procedure Comments:

KMZ FILES:  
 KPDX\_KRATR\_THREE\_ARRIVAL\_(RNAV): ENTIRE STAR  
 KPDX\_KRATR\_THREE\_ARRIVAL\_(RNAV)\_1: CORRECT CONTROLLING OBSTACLE FOR HOLDING  
  
 CONTACT: KYLE THOMPSON 405-954-2135



## FIPC DME/DME FORM

<b>PROCEDURE:</b> KRATR (RNAV) THREE ARRIVAL		<b>AIRPORT NAME:</b> PORTLAND INTL		<b>AIRPORT ID:</b> KPDX	<b>SPECIAL CONTROL NO:</b> SG-11-095-25
<b>FAC ID:</b> KRATR3		<b>CITY:</b> PORTLAND		<b>ST:</b> OR	<b>ORIG CHART DATE:</b> 03/19/2026
<b>DFL TYPE:</b> PROC/D	<b>THIRD PARTY:</b> <input type="checkbox"/> YES	<b>EST. TIME ON SITE:</b> 1.0	<b>REIMB. NUMBER:</b>	<b>PTS TASK ID:</b> 2B581D85893043B4AB49DC4D44512F9D	

### PREFLIGHT NOTES

<b>REVIEWER:</b> jordan rolih			<b>DATE:</b> 12/23/2025		
<b>COMMENTS:</b>			<b>CHECK ONE:</b>		
			<input checked="" type="checkbox"/> FLT CK REQ <input type="checkbox"/> NFCR <input type="checkbox"/> REJECT		
			<b>YES</b>	<b>NO</b>	
			<b>CPV COMPLETE?</b>		X

### PROCEDURE RESULTS

<b>INSPECTION DATE:</b> 12/22/2025	<b>CREW #:</b> VN408	<b>N #:</b> N71	<b>INSTRUMENT PROCEDURE STATUS:</b> <input checked="" type="checkbox"/> SAT <input type="checkbox"/> SAT W/CHANGES <input type="checkbox"/> UNSAT		<b>ARINC CODING:</b> <input checked="" type="checkbox"/> SAT <input type="checkbox"/> SAT/GOLD <input type="checkbox"/> UNSAT	
<b>FLIGHT INSPECTOR SIGNATURE:</b> jordan rolih @ 12/23/2025 10:47			<b>PRINTED NAME:</b> ROLIH, JORDAN ALEXANDER			<b>NOTAM INITIATED?</b> <input type="checkbox"/> YES <input checked="" type="checkbox"/> NO

**FLIGHT INSPECTOR REMARKS:**

<b>DME/DME STATUS:</b> <input type="checkbox"/> SAT <input type="checkbox"/> UNSAT	<b>SPECIALIST SIGNATURE:</b>	<b>PRINTED NAME:</b>
---	------------------------------	----------------------

**SPECIALIST REMARKS:**

### IN-FLIGHT OBSTACLE REPORT

<b>OBSTRUCTION ID #:</b>	<b>COORDINATES OR LOCATION:</b>	<b>GNSS ALTITUDE (MSL):</b>	<b>BAROMETRIC ALTITUDE (MSL):</b>	<b>HEIGHT ABOVE GROUND LEVEL:</b>
--------------------------	---------------------------------	-----------------------------	-----------------------------------	-----------------------------------

(KRATR.KRATR3) FIG

# KRATR THREE ARRIVAL (RNAV)

AL-330 (FAA)

PORTLAND INTL (PDX)

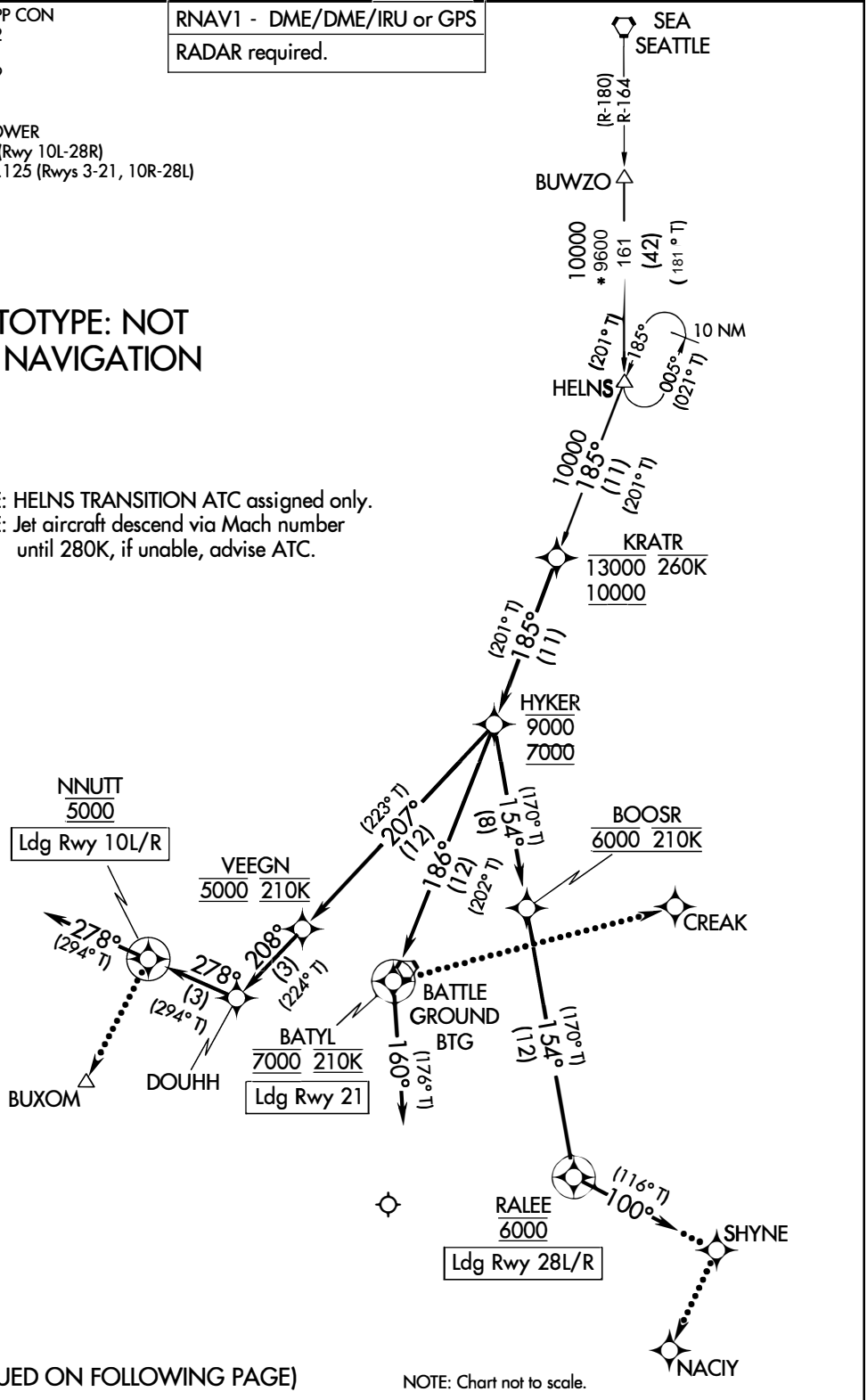
PORTLAND, OREGON

PORTLAND APP CON  
 124.35 299.2  
 D-ATIS  
 128.35 269.9  
 GND CON  
 121.9 348.6  
 PORTLAND TOWER  
 118.7 257.8 (Rwy 10L-28R)  
 123.775 251.125 (Rwys 3-21, 10R-28L)

RNAV1 - DME/DME/IRU or GPS  
 RADAR required.

## PROTOTYPE: NOT FOR NAVIGATION

NOTE: HELNS TRANSITION ATC assigned only.  
 NOTE: Jet aircraft descend via Mach number until 280K, if unable, advise ATC.



AUTOMATED AL-330 KRATR ARRIVAL

NW-1  
 10 NOV 2025  
 COMPILER: CG  
 REVIEWER:  
 DBL CHKR:  
 EFF: FIG

(CONTINUED ON FOLLOWING PAGE)

KRATR THREE ARRIVAL (RNAV)  
 (KRATR.KRATR3) FIG

PORTLAND, OREGON  
 PORTLAND INTL (PDX)

ARRIVAL ROUTE DESCRIPTION

BUWZO TRANSITION (BUWZO.KRATR3)

HELNS TRANSITION (HELNS.KRATR3)

From KRATR on track 185° to cross HYKER between 7000 and 9000.

LANDING RUNWAYS 10L/R: From HYKER on track 207° to cross VEGGN at 5000 and at 210K, then on track 208° to DOUHH, then on 278° to cross NNUTT at 5000, then on track 278°. Expect RADAR vectors to final approach course.

LANDING RUNWAY 21: From HYKER on track 186° to cross BATYL at 7000 and at 210K, then on track 160°. Expect RADAR vectors to final approach course.

LANDING RUNWAYS 28L/R: From HYKER on track 154° to cross BOOSR at 6000 and at 210K, then on track 154° to cross RALEE at 6000, then on track 100°. Expect RADAR vectors to final approach course.

LOST COMMUNICATIONS

Follow published crossing altitudes and then maintain lowest rwy transitional altitude until established on approach procedure.

RUNWAYS 10L/R: At NNUTT, then turn left direct to BUXOM and proceed on the ILS or LOC RWY 10L approach.

RUNWAY 21: At BATYL, turn left direct to CREAK and proceed on LOC/DME RWY 21 approach.

RUNWAYS 28L/R: At RALEE, turn left direct to SHYNE, then turn right direct to NACIY and proceed on the ILS or LOC RWY 28R approach.

PROTOTYPE: NOT FOR NAVIGATION

AUTOMATED AL-330 KRATR ARRIVAL (CONT)

NW-1

10 NOV 2025

COMPILER: CG

REVIEWER:

DBL CHKR:

EFF: FIG

(KRATR.KRATR2) 17229

**OLD**

PORTLAND INTL (PDX)

**KRATR TWO ARRIVAL (RNAV)**

AL-330 (FAA)

PORTLAND, OREGON

D-ATIS  
128.35 269.9  
PORTLAND APP CON  
124.35 299.2  
PORTLAND TOWER  
118.7 257.8 (Rwy 10L-28R)  
123.775 251.125 (Rwys 3-21, 10R-28L)  
GND CON  
121.9 348.6

SEATTLE SEA

R-161  
BUWZO  
11000  
\*8500  
164°  
(42)

HELNS  
11000

0000  
\*581  
(11)

7000  
\*581  
(01)

HYKER  
9000  
7000

VOODU  
5000 210K

NNUTT  
5000 5000  
\*2500  
278°  
(3)

DOUHH  
5000 2700  
\*2700  
214°  
(3)

BATYL  
7000 210K

BATTLE GROUND BTG

LIQWD  
6000  
\*4400  
151°  
(6)

6000  
\*4400  
151°  
(13)

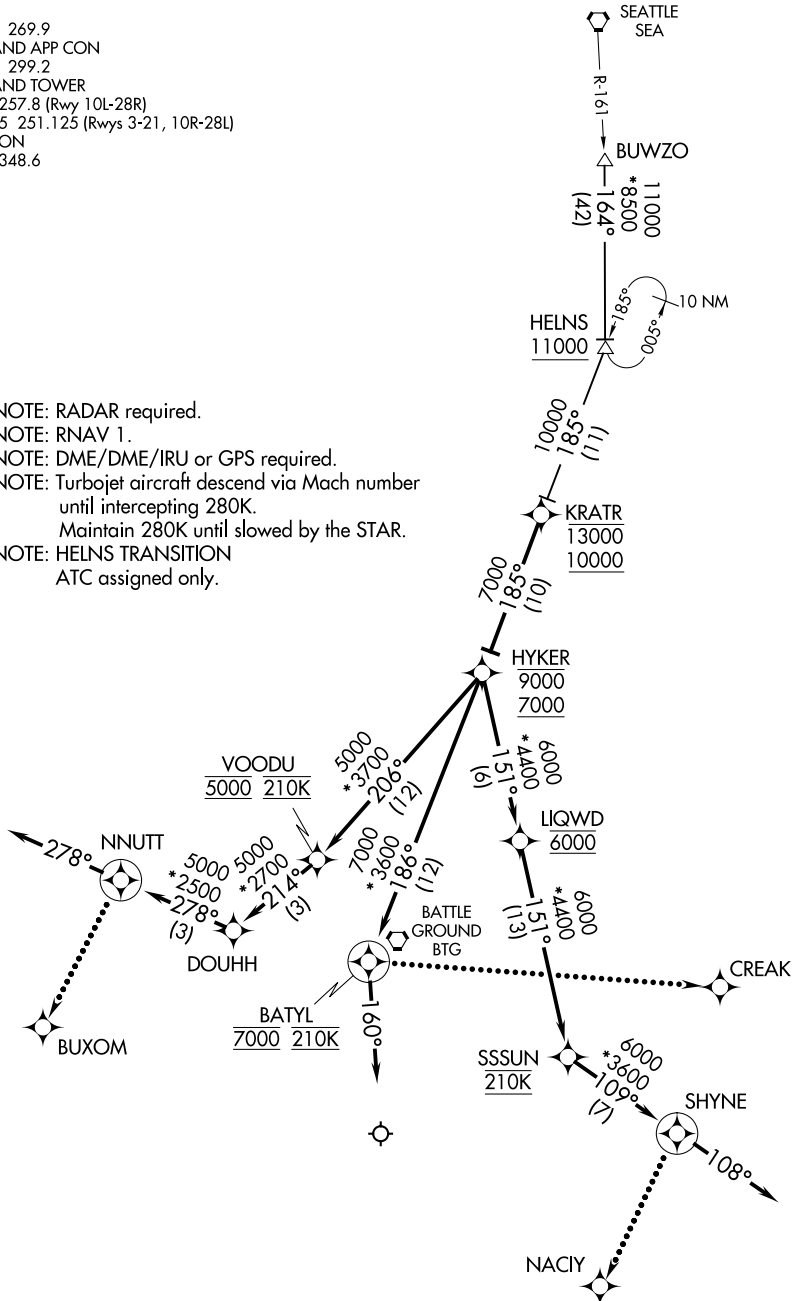
SSSUN  
210K

CREAK

SHYNE  
6000  
\*3800  
109°  
(7)

NACIY

- NOTE: RADAR required.
- NOTE: RNAV 1.
- NOTE: DME/DME/IRU or GPS required.
- NOTE: Turbojet aircraft descend via Mach number until intercepting 280K. Maintain 280K until slowed by the STAR.
- NOTE: HELNS TRANSITION ATC assigned only.



NW-1, 07 AUG 2025 to 04 SEP 2025

NW-1, 07 AUG 2025 to 04 SEP 2025

(NARRATIVE ON FOLLOWING PAGE)

NOTE: Chart not to scale.

**KRATR TWO ARRIVAL (RNAV)**

(KRATR.KRATR2) 25JUN15

PORTLAND, OREGON

PORTLAND INTL (PDX)

OLD

(KRATR.KRATR2) 17173

KRATR TWO ARRIVAL (RNAV)

AL-330 (FAA)

PORTLAND INTL (PDX)  
PORTLAND, OREGON

ARRIVAL ROUTE DESCRIPTION

BUWZO TRANSITION (BUWZO.KRATR2)

HELNS TRANSITION (HELNS.KRATR2):

From KRATR on track 185° to cross HYKER between 7000 and 9000. Thence. . . .

LANDING RUNWAYS 10L/R: From HYKER on track 206° to cross VODOU at 5000 and at 210K, then on track 214° to DOUHH, then on track 278° to NNUTT, then on track 278°. Expect RADAR vectors to final approach course.

LANDING RUNWAY 21: From HYKER on track 186° to cross BATYL at 7000 and at 210K, then on track 160°. Expect RADAR vectors to final approach course.

LANDING RUNWAYS 28L/R: From HYKER on track 151° to cross LIQWD at 6000, then on track 151° to cross SSSUN at 210K, then on track 109° to SHYNE, then on track 108°. Expect RADAR vectors to final approach course.

LOST COMMUNICATIONS:

LANDING RUNWAYS 10L/R: At NNUTT, turn left direct to BUXOM and execute ILS RWY 10L approach.

LANDING RUNWAY 21: At BATYL turn left direct to CREAK and execute LOC/DME RWY 21 approach.

LANDING RUNWAYS 28L/R: At SHYNE, turn right direct to NACIY and execute ILS RWY 28R approach.

NW-1, 07 AUG 2025 to 04 SEP 2025

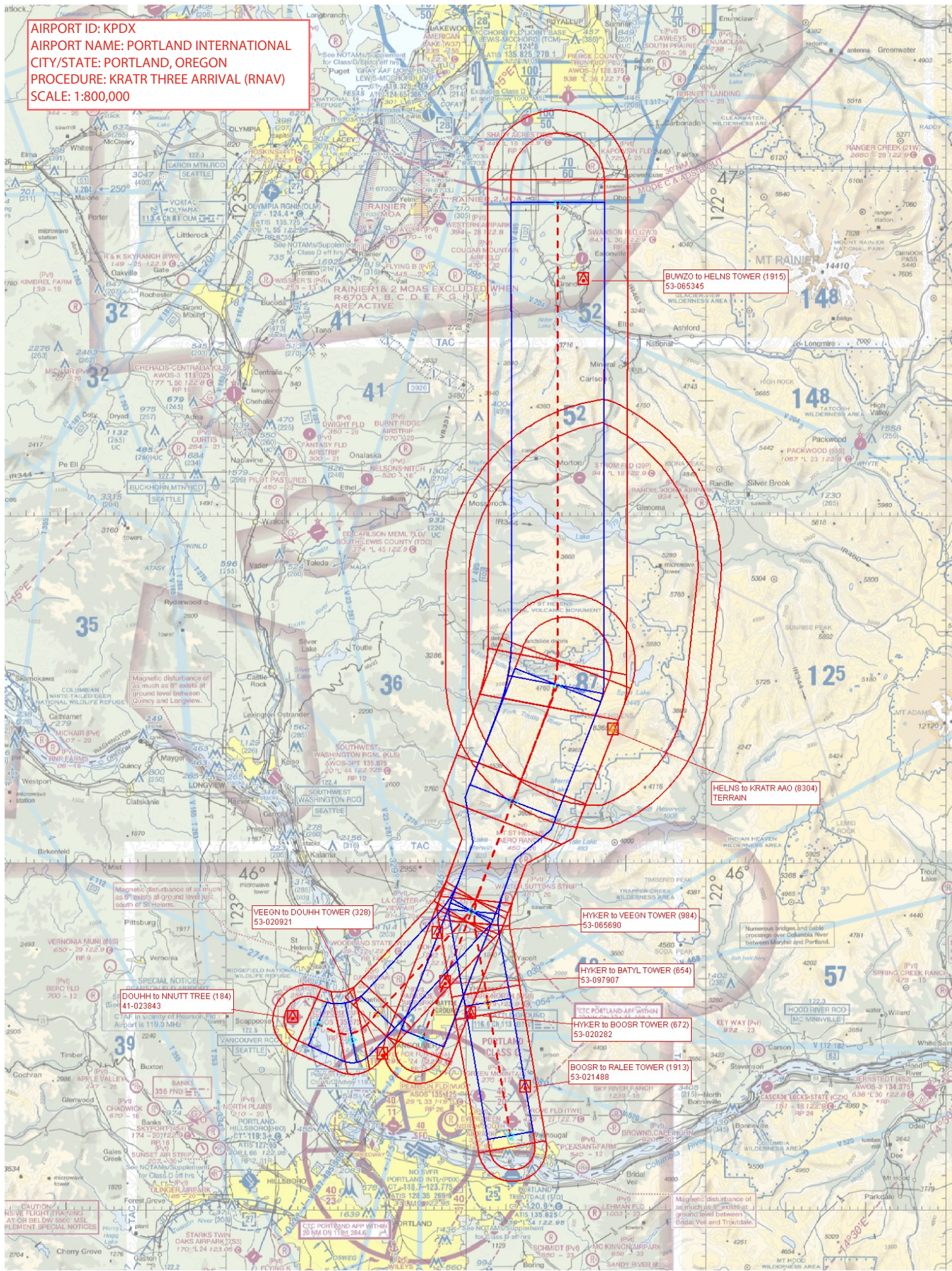
NW-1, 07 AUG 2025 to 04 SEP 2025

KRATR TWO ARRIVAL (RNAV)

(KRATR.KRATR2) 25JUN15

PORTLAND, OREGON  
PORTLAND INTL (PDX)

AIRPORT ID: KPDX  
AIRPORT NAME: PORTLAND INTERNATIONAL  
CITY/STATE: PORTLAND, OREGON  
PROCEDURE: KRATR THREE ARRIVAL (RNAV)  
SCALE: 1:800,000



BUWZO to HELNS TOWER (915)  
53-065345

HELNS to KRATR AAO (8304)  
TERRAIN

VEEON to DOUHH TOWER (328)  
53-020921

HYKER to VEEGN TOWER (984)  
53-065690

HYKER to BATYL TOWER (654)  
53-097907

DOUHH to NNUTT TREE (184)  
41-023843

CTC PORTLAND APP WITHIN  
HYKER to BOOSR TOWER (672)  
53-020282

BOOSR to RALEE TOWER (1913)  
53-021488

CTC PORTLAND APP WITHIN  
20 NM ON 118.1 284.6

Magnetic disturbance of  
as much as 8° exists at  
ground level between  
Bridal Veil and Troutdale.

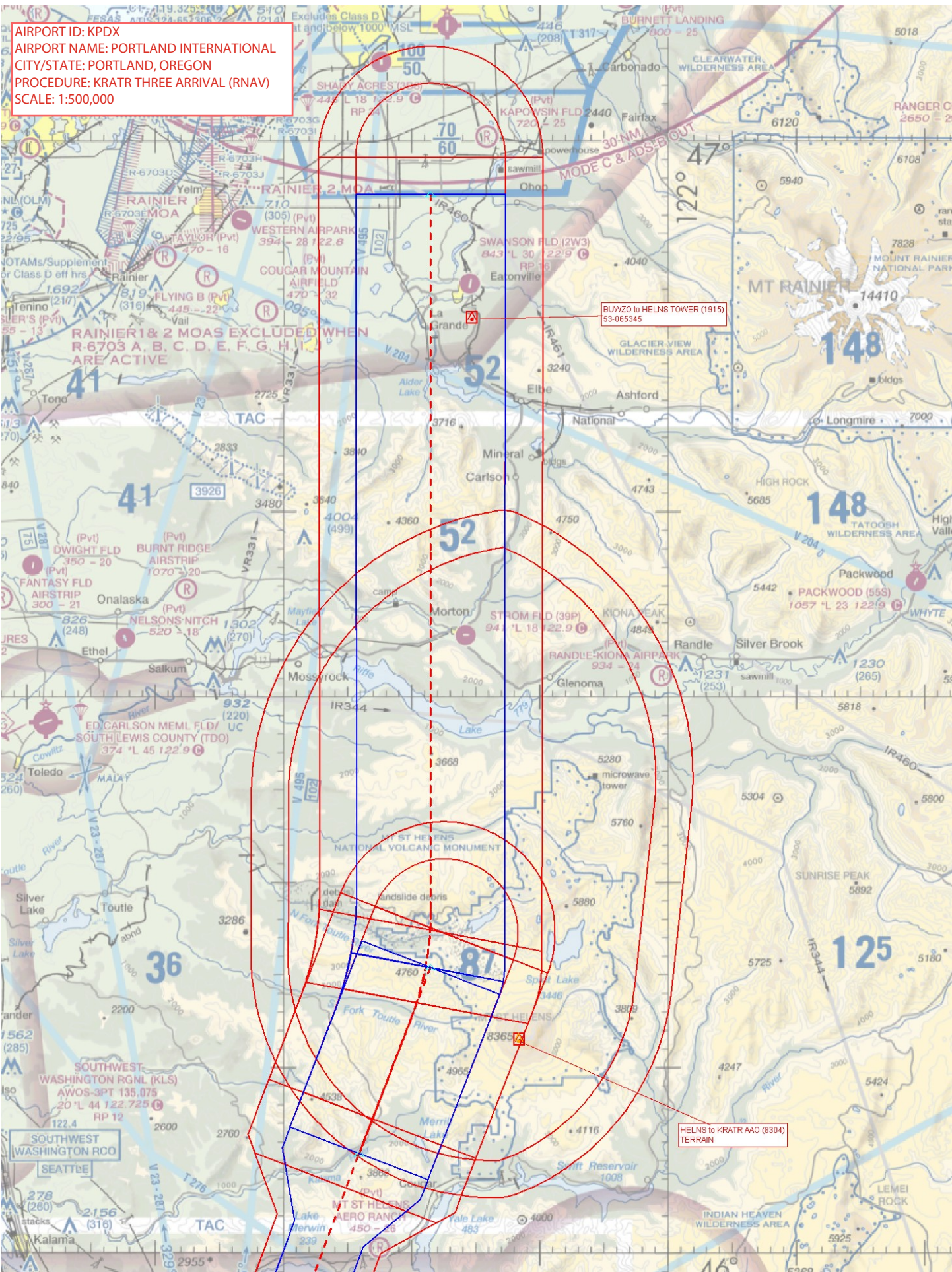
Magnetic disturbance of  
as much as 8° exists at  
ground level between  
Quincy and Longview.

Magnetic disturbance of  
as much as 8° exists at  
ground level just  
south of St Helens.

Numerous bridges and cable  
crossings over Columbia River  
between Maryhill and Portland.

CAUTION  
NSIVE FLIGHT TRAINING  
AT OR BELOW 5600' MSL  
REFERENT SPECIAL NOTICES

AIRPORT ID: KPDX  
AIRPORT NAME: PORTLAND INTERNATIONAL  
CITY/STATE: PORTLAND, OREGON  
PROCEDURE: KRATR THREE ARRIVAL (RNAV)  
SCALE: 1:500,000



BUWZO to HELNS TOWER (1915)  
53-065345

HELNS to KRATR AAO (8304)  
TERRAIN

