

Flight Procedures Cover Page	Task Action: Abbreviated Amendment	Task Type: IAP	Estimated Chart Date: 03/19/2026	APWS Task ID: 2B96533E08B04377AB14FD157A722CC9	APWS Project ID: 5884E81A028F4646BE4A3E9ADB63FBD6
Procedure: RNAV (GPS) RWY 34 AMDT 2A		Enroute: NO	Specialist: Taylor, Jantzen		Agreement Number:
Airport ID: KLRG			Airport City: LINCOLN		State: ME
Facility ID:	Facility Type:	Flight Inspection Remark Type:			

**Procedure Comments:**

PROCESSED IAW TECHNICAL SUPPORT GROUP (AJF-17) MEMO DATED 07/07/2021 GUIDANCE FOR PROCEDURAL CHANGES REQUIRING FLIGHT INSPECTION/VALIDATION  
 CLEARS NOTAM !FDC 4/7528  
 ACTIVE DATA USED FOR AIRPORT AND RUNWAYS  
  
 CONTACT RAKE MCGRAW (AJV A422) 405.954.8711.



APP CRS	Rwy Idg	2805
346°	TDZE	208
	Apt Elev	208

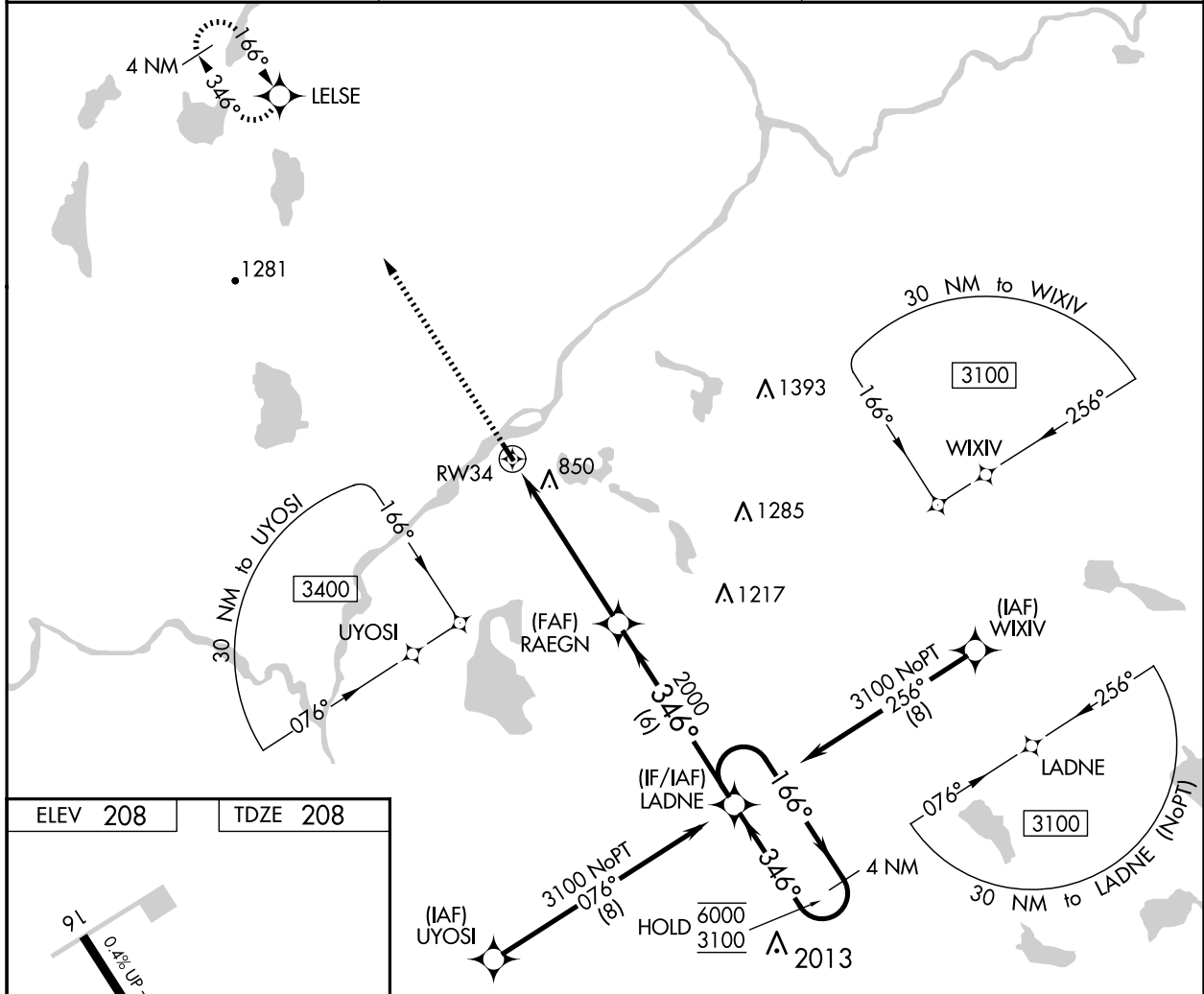
**OLD**

# RNAV (GPS) RWY 34

LINCOLN RGNL (LRG)

RNP APCH - GPS.		MISSED APPROACH: Climb to 2800 direct LELSE and hold.
▼	Procedure NA at night. Rwy 34 helicopter visibility reduction below 1 SM NA. Use Millinocket altimeter setting; when not received, use Bangor Intl altimeter setting and increase all MDA 20 feet.	
▲ NA		

MLT ASOS <b>135.225</b>	BOSTON CENTER <b>124.25 290.5</b>	UNICOM <b>122.8 (CTAF) 0</b>
----------------------------	--------------------------------------	---------------------------------



NE-1, 07 AUG 2025 to 04 SEP 2025

NE-1, 07 AUG 2025 to 04 SEP 2025

ELEV 208	TDZE 208
----------	----------

WATER RWY: 06W - 24W  
2400 X 100

MIRL Rwy 16-34 0  
REIL Rwy 16 and 34 0

2800	LELSE	Visual Segment - Obstacles.	LADNE	4 NM Holding Pattern
↑	✧			
		RAEGN		
		RW34		
		2000		
		5.5 NM	6 NM	
			166° → 6000	
			← 346° 3100	
CATEGORY	A	B	C	D
LNAV MDA	1180-1¼ 972 (1000-1¼)	1180-1½ 972 (1000-1½)	NA	
CIRCLING	1240-1¼ 1032 (1100-1¼)	1240-1½ 1032 (1100-1½)	NA	