

FEDERAL AVIATION ADMINISTRATION
 FLIGHT STANDARDS SERVICE
 STANDARD TERMINAL ARRIVAL (STAR)

Bearings, headings, courses, tracks and radials are magnetic. Elevations and altitudes are in feet, MSL. Altitudes are minimum altitudes unless otherwise indicated.
 Ceilings are in feet above airport elevation. Distances are in nautical miles. Visibilities are in statute miles or feet RVR unless otherwise indicated.

Arrival Name CAVLR (RNAV)	Number FIVE	STAR Computer Code BNTLY.CAVLR5	Superseded Number FOUR	Dated 12/31/2020	Effective Date
-------------------------------------	-----------------------	-------------------------------------------	----------------------------------	----------------------------	----------------

TRANSITION ROUTES:

Transition Name	Transition Computer Codes	From FIX/NAVAID	To FIX/NAVAID	Course	Distance	MEA	MOCA	MAA	Crossing Altitudes / Fixes
DORRN	DORRN.CAVLR5	DORRN	DORRN						
			PERKN	034.31	08.00	FL220	1900	AT/ABOVE FL220	
			KHOOD	033.75	14.98	14000	1900	BETWEEN 14000 AND FL220	
THHMP	THHMP.CAVLR5	THHMP	BNTLY	033.84	11.28	13000	1900	AT/ABOVE 13000	
			JROBB	346.05	29.95	13000	1900		
			BNTLY	358.97	06.48	13000	1900	AT/ABOVE 13000	
TRSSK	TRSSK.CAVLR5	TRSSK	TRSSK						
			PERKN	010.70	25.53	FL220	1900	AT/ABOVE FL220	
			KHOOD	033.75	14.98	14000	1900	BETWEEN 14000 AND FL220	
			BNTLY	033.84	11.28	13000	1900	AT/ABOVE 13000	

ARRIVAL ROUTE DESCRIPTION:

FROM BNTLY ON TRACK 036.62/7.00 TO CROSS MEEGO AT OR ABOVE 11000, THEN ON TRACK 036.76/5.41 TO CROSS CAVLR AT 10000 AND AT OR BELOW 250 KIAS.

LANDING RWY 1L/C/R: FROM CAVLR ON TRACK 025.52/3.20 TO CROSS UVVAA AT 9000, THEN ON TRACK 025.52. EXPECT RADAR VECTORS TO FINAL APPROACH COURSE.

LANDING RWY 19L/C/R: FROM CAVLR ON TRACK 025.52/16.18 TO CROSS KASDY AT 7000, THEN ON TRACK 024.03/5.38 TO CROSS BARIN AT 6000, THEN ON TRACK 011.63/11.37 TO CROSS STAYO AT 4000, THEN ON TRACK 011.62/15.43 TO TRING, THEN ON TRACK 011.55/13.19 TO MIXNN, THEN ON TRACK 011.55. EXPECT RADAR VECTORS TO FINAL APPROACH COURSE.

LANDING RWY 30: FROM CAVLR ON TRACK 025.52/16.18 TO CROSS KASDY AT 7000, THEN ON TRACK 020.00/5.00 TO CROSS COINZ AT 6000 AND AT 210 KIAS, THEN ON TRACK 010.00. EXPECT RADAR VECTORS TO FINAL APPROACH COURSE.

PBN REQUIREMENT NOTES:

RNAV 1 - DME/DME/IRU OR GPS

EQUIPMENT REQUIREMENT NOTES:

RADAR REQUIRED

PROCEDURAL DATA NOTES:

NOTE: JET AIRCRAFT ONLY

NOTE: ARTCC WILL ISSUE LANDING DIRECTION ASSIGNMENT (NORTH OR SOUTH) AND POTOMAC TRACON WILL ISSUE RUNWAY ASSIGNMENT.

CHART AT MIXNN: NOTE: LANDING SOUTH RWYS 19L/C/R: EXPECT RADAR VECTORS TO FINAL APPROACH COURSE AFTER MIXNN.

CHART AT COINZ: NOTE: LANDING NORTH RWY 30: EXPECT RADAR VECTORS TO FINAL APPROACH COURSE AFTER COINZ.

CHART AT UVVAA: NOTE: LANDING NORTH RWYS 1L/C/R: EXPECT RADAR VECTORS TO FINAL APPROACH COURSE AFTER UVVAA.



FEDERAL AVIATION ADMINISTRATION
 FLIGHT STANDARDS SERVICE
 STANDARD TERMINAL ARRIVAL (STAR)

Bearings, headings, courses, tracks and radials are magnetic. Elevations and altitudes are in feet, MSL. Altitudes are minimum altitudes unless otherwise indicated.
 Ceilings are in feet above airport elevation. Distances are in nautical miles. Visibilities are in statute miles or feet RVR unless otherwise indicated.

Arrival Name	Number	STAR Computer Code	Superseded Number	Dated	Effective Date
CAVLR (RNAV)	FIVE	BNTLY.CAVLR5	FOUR	12/31/2020	

FIXES AND/OR HOLDING PATTERNS:

- CHART HOLDING AT DORRN: HOLD SW, LT, 034.31 INBOUND, 10 NM LEGS.
- CHART HOLDING AT BNTLY: HOLD SW, RT, 033.84 INBOUND, 10 NM LEGS, 230 KIAS.
- CHART HOLDING AT MEEGO: HOLD SW, RT, 036.62 INBOUND, 10 NM LEGS, 210 KIAS.
- CHART HOLDING AT CAVLR: HOLD SW, LT, 036.76 INBOUND, 5 NM LEGS, 210 KIAS.

COMMUNICATIONS:

CHART: POTOMAC APP CON

AIRPORTS SERVED:

<u>AIRPORT ID</u>	<u>CITY</u>	<u>STATE</u>
KIAD	WASHINGTON	DC

LOST COMMUNICATIONS PREFERENCES:

REMARKS:

ATC ELECTS TO ADD FM LEG(S) SO AIRCRAFT FMS DOES NOT AUTOMATICALLY TURN ON TO CONNECTING IAPS.

ADDITIONAL FLIGHT DATA:

- DME/DME ASSESSMENT: SAT (RNP 2.0)
- MAG VAR: KIAD 10W/2000
- CHART: R-6608A, R-6608B, R-6608C.
- CHART: P-56B, P-56A
- CHART P-40, R-4009
- CHART: AT MIXNN TERMINUS: KIAD LDG RWY 19L/C/R
- CHART: AT COINZ TERMINUS: KIAD LDG RWY 30
- CHART: AT UVVAA TERMINUS: KIAD LDG RWY 1L/C/R

FLIGHT INSPECTED BY:

BOB S PRESSLER

ORGANIZATION:

FPO

DATE:

01/08/2024

Flight Inspected Signature: _____

Digitally signed by

TYLER D MITCHELL

Dec 10, 2023

DEVELOPED BY:

TYLER MITCHELL

AJV-A432

10/12/2023

Developed By Signature: _____

APPROVED BY:

CASIMIR TABAKA

AJV-A432

Approved By Signature: _____



FEDERAL AVIATION ADMINISTRATION
 FLIGHT STANDARDS SERVICE
 STANDARD TERMINAL ARRIVAL (STAR)

Bearings, headings, courses, tracks and radials are magnetic. Elevations and altitudes are in feet, MSL. Altitudes are minimum altitudes unless otherwise indicated.
 Ceilings are in feet above airport elevation. Distances are in nautical miles. Visibilities are in statute miles or feet RVR unless otherwise indicated.

Arrival Name	Number	STAR Computer Code	Superseded Number	Dated	Effective Date
CAVLR (RNAV)	FIVE	BNTLY.CAVLR5	FOUR	12/31/2020	

CHANGES:

1. CHANGED ALL MOCA VALUES TO 1900.
2. RWY 1L/C/R TRANSITION ROUTING CHANGED FROM CALVR-KASDY-COINZ TO CAVLR-UVVAA; RWY 30 TRANSITION SEPERATED OUT AND ADDED 210 KIAS RESTRICTION TO TERMINUS.
3. REMOVED PROCEDURAL DATA NOTE RNAV 1, DME/DME/IRU REQUIRED AND ADDED PBN EQUIPMENT NOTES: RNAV 1 - DME/DME/IRU OR GPS.
4. CHANGED NOTE FROM "CHART AT COINZ: NOTE: LANDING NORTH RWYS 1L/C/R,30: EXPECT RADAR VECTORS TO FINAL APPROACH COURSE AFTER COINZ." TO "CHART AT COINZ: NOTE: LANDING NORTH RWY 30: EXPECT RADAR VECTORS TO FINAL APPROACH COURSE AFTER COINZ."
5. ADDED NOTE "CHART AT UVVAA: NOTE: LANDING NORTH RWYS 1L/C/R: EXPECT RADAR VECTORS TO FINAL APPROACH COURSE AFTER UVVAA."
6. CHANGED PROCEDURAL DATA NOTE FROM TURBOJET AIRCRAFT ONLY TO JET AIRCRAFT ONLY.
7. MOVED RADAR REQUIRED FROM PROCEDURAL DATA NOTES TO EQUIPMENT REQUIRMENT NOTES.
8. ADDED ADDITIONAL FLIGHT DATA CHARTED TERMINUS DATA
9. ADDED ADDITIONAL FLIGHT DATA CHART: P-56B, P-56A, R4009.

REASONS:

1. IAW 8260.19I, 4-5-12B(8).
2. ATC REQUEST.
3. UPDATED NOTE IAW 8260.46 2-1-1F(6).
4. RWY 1L/C/R TERMINUS POINT CHANGED.
5. NEW TERMINUS POINT.
6. IAW 8260.19I, 4-5-2.
- 7,8. IAW 8260.19I.
9. ATC REQUEST

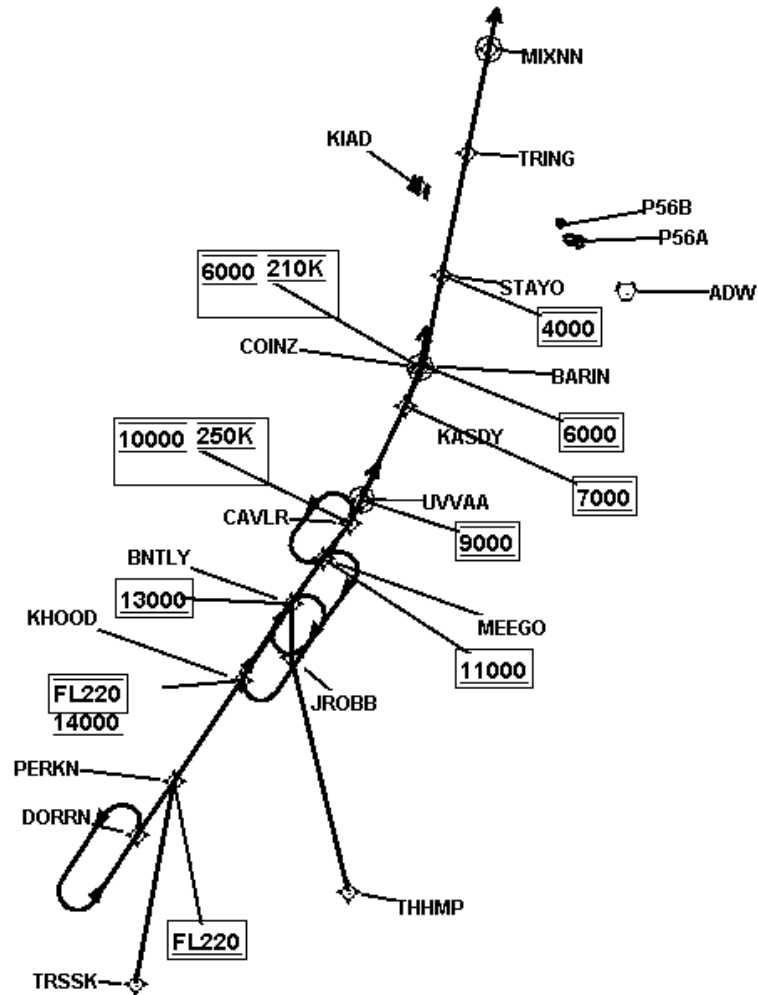


FEDERAL AVIATION ADMINISTRATION
 FLIGHT STANDARDS SERVICE
 STANDARD TERMINAL ARRIVAL (STAR)

Bearings, headings, courses, tracks and radials are magnetic. Elevations and altitudes are in feet, MSL. Altitudes are minimum altitudes unless otherwise indicated.
 Ceilings are in feet above airport elevation. Distances are in nautical miles. Visibilities are in statute miles or feet RVR unless otherwise indicated.

Arrival Name	Number	STAR Computer Code	Superseded Number	Dated	Effective Date
CAVLR5 RNAV	FIVE	CAVLR.CAVLR5	FOUR	12/31/2020	

Graphic Depiction 2



FEDERAL AVIATION ADMINISTRATION
 FLIGHT STANDARDS SERVICE
 STAR (DATA RECORD)

Arrival Name CAVLR (RNAV)	Number FIVE	STAR Computer Code BNTLY.CAVLR5		Superseded Number FOUR		Dated 12/31/2020		Effective Date	
FIX/NAVAID	LAT/LONG	C	FO/FB	LEG TYPE	TC	DIST (NM)	ALTITUDE	SPEED	REMARKS
En Route Transition									
DORRN	373154.04N / 0775337.62W	Y		IF					DORRN.CAVLR5
PERKN	373911.93N / 0774928.81W	Y	FB	TF	024.31	08.00	AT/ABOVE FL220		
KHOOD	375255.24N / 0774151.57W	Y	FB	TF	023.75	14.98	14000BFL220		
BNTLY	380314.99N / 0773605.16W	Y	FB	TF	023.84	11.28	AT/ABOVE 13000		
En Route Transition									
THHMP	372929.47N / 0771908.75W	Y		IF					THHMP.CAVLR5
JROBB	375652.74N / 0773430.92W	Y	FB	TF	336.05	29.95			
BNTLY	380314.99N / 0773605.16W	Y	FB	TF	348.97	06.48	AT/ABOVE 13000		
En Route Transition									
TRSSK	371338.41N / 0774952.25W	Y		IF					TRSSK.CAVLR5
PERKN	373911.93N / 0774928.81W	Y	FB	TF	000.70	25.53	AT/ABOVE FL220		
KHOOD	375255.24N / 0774151.57W	Y	FB	TF	023.75	14.98	14000BFL220		
BNTLY	380314.99N / 0773605.16W	Y	FB	TF	023.84	11.28	AT/ABOVE 13000		
Common Route									
BNTLY	380314.99N / 0773605.16W	Y		IF			AT/ABOVE 13000		BNTLY.CAVLR5
MEEGO	380930.81N / 0773206.56W	Y	FB	TF	026.62	07.00	AT/ABOVE 11000		
CAVLR	381421.14N / 0772900.90W	Y	FB	TF	026.76	05.41	AT 10000	AT/BELOW 250K	
Runway Transition									
CAVLR	381421.14N / 0772900.90W	Y		IF			AT 10000	AT/BELOW 250K	
UVVAA	381726.33N / 0772755.63W	Y	FO	TF	015.52	03.20	AT 9000		
KIAD:RWY 1C,RWY 1L,RWY 1R				FM	015.52				
Runway Transition									
CAVLR	381421.14N / 0772900.90W	Y		IF			AT 10000	AT/BELOW 250K	



FEDERAL AVIATION ADMINISTRATION
 FLIGHT STANDARDS SERVICE
 STAR (DATA RECORD)

Arrival Name CAVLR (RNAV)	Number FIVE	STAR Computer Code BNTLY.CAVLR5		Superseded Number FOUR		Dated 12/31/2020	Effective Date		
<u>FIX/NAVAID</u>	<u>LAT/LONG</u>	<u>C</u>	<u>FO/FB</u>	<u>LEG TYPE</u>	<u>TC</u>	<u>DIST (NM)</u>	<u>ALTITUDE</u>	<u>SPEED</u>	<u>REMARKS</u>
KASDY	382957.17N / 0772330.01W	Y	FB	TF	015.52	16.18	AT 7000		
BARIN	383510.92N / 0772150.09W	Y	FB	TF	014.03	05.38	AT 6000		
STAYO	384633.60N / 0772125.20W	Y	FB	TF	001.63	11.37	AT 4000		
TRING	390200.00N / 0772051.60W	Y	FB	TF	001.62	15.43			
MIXNN	391512.00N / 0772024.00W	Y	FO	TF	001.55	13.19			
KIAD:RWY 19C,RWY 19L,RWY 19R				FM	001.55				
Runway Transition									
CAVLR	381421.14N / 0772900.90W	Y		IF			AT 10000	AT/BELOW 250K	
KASDY	382957.17N / 0772330.01W	Y	FB	TF	015.52	16.18	AT 7000		
COINZ	383452.91N / 0772223.58W	Y	FO	TF	010.00	05.00	AT 6000	AT 210K	
KIAD:RWY 30				FM	000.00				

