

DME DME Assessment Results for CAVLR5 path BNTLY_DORRN

Results Summary

Flyability:	Completed
DME/DME:	Completed - No Critical DMEs
Name:	David C-CTR Cook
Project File:	C:\Users\David C-CTR Cook\Documents\TARGETS WORK\KIAD 3-21-2024\AMENDED FOR FIXES\CAVLR5\KIAD CAVLR STAR 20231207.tgs
Output File:	C:\Users\David C-CTR Cook\Documents\TARGETS WORK\KIAD 3-21-2024\AMENDED FOR FIXES\CAVLR5\KIAD [IFPA] CAVLR5 20231208_0941 EST\BNTLY_DORRN\KIAD CAVLR5 RNAV STAR BNTLY DORRN 20231208_0941 EST.pdf
Procedure Name:	CAVLR5
Software: DmeDmePlugin:	7.2.1
Date/Time:	12/08/2023 09:41 EST
Databases:	DTED0.MAX

Failures

No Failures

Warnings

No Warnings

Informational

No Informational

Notes For Flight Check

None

Flight Plan

Name	Type	Lat/Lon	Altitude (ft)	VNAV Mode	Ground Speed (kts)	Turn Type	Leg Type
BNTLY	WP	N38° 03' 14.9900", W077° 36' 05.1600"	13000	VNAV	250	FLY_BY	TF
KHOOD	WP	N37° 52' 55.2400", W077° 41' 51.5700"	13000	VNAV	250	FLY_BY	TF
PERKN	WP	N37° 39' 11.9300", W077° 49' 28.8100"	13000	VNAV	250	FLY_BY	TF
DORRN	WP	N37° 31' 54.0400", W077° 53' 37.6200"	13000	VNAV	250	FLY_BY	TF

Flyability

Flight Type:	RNAV_STAR
Selected Airport:	KIAD [IFPA]
Climb Gradient:	None assigned
Speeds:	200 Ground Speed to 11000 FT
	240 Ground Speed to 18000 FT
	260 Ground Speed to 24000 FT
	340 Ground Speed above 24000 FT
Descent During a Turn:	Allowed
VNAV Mode:	Flight Plan

DME DME Assessment Results for CAVLR5 path BNTLY_DORRN

DME/DME	
RNP:	RNP 2
Flight Mode:	Manual
Line of Sight (DTED Level 0 Max):	Evaluated
Inertial Drift:	Enabled
Initial Drift:	0.558 NM
INS Drift Rate:	8.0 NM/Hour
Range Mode:	OSV
RNP Edges:	Evaluated
Min DME Range:	3.0 NM
DME Types:	DME, VOR-DME, VORTAC
DME Include Angles:	30 to 150
Critical DMEs:	Allowed
DoD Facilities:	Not included
Foreign Facilities:	Not included
High DMEs:	Included
Low DMEs:	Included
Terminal DMEs:	Included
Flight Check DMEs:	Not selected
Higher Altitudes:	Not Evaluated
Near Maximum Altitude:	Not Evaluated
Automatic ESVs:	Not enabled
Disabled DMEs:	FKN

DME/DME (Continued)										
DMEs Used										
#	Name	Lat/Lon	MAGVAR	Range	Type	Source	Critical	Status	Time	Distance
1	CCV	N37° 20' 51.1400", W075° 59' 51.5500"	10.0 W	40	L	IFPA	NO	Enabled	8.7 %	8.7 %
2	HPW	N37° 19' 43.9320", W077° 06' 57.3970"	6.0 W	40	L	IFPA	NO	Enabled	2.8 %	2.8 %
3	RIC	N37° 30' 08.4521", W077° 19' 12.9944"	9.0 W	130	H	IFPA	NO	Enabled	100 %	100 %
4	FAK	N37° 31' 42.6340", W077° 49' 41.5890"	6.0 W	130	H	IFPA	NO	Enabled	88.5 %	88.5 %
5	LVL	N36° 49' 04.9290", W077° 54' 10.6850"	8.0 W	40	L	IFPA	NO	Enabled	2 %	2 %
6	BRV	N38° 20' 10.5264", W077° 21' 10.3159"	9.0 W	40	L	IFPA	NO	Enabled	55.4 %	55.4 %
7	GVE	N38° 00' 48.9578", W078° 09' 10.8957"	6.0 W	130	H	IFPA	NO	Enabled	88.9 %	88.9 %
8	FKN	N36° 42' 51.2443", W077° 00' 44.5488"	9.0 W	40	L	IFPA	NO	Disabled		

Flight Check DME Selection						
Distance [NM]	Selected DMEs					Alternate
0.0	RIC	GVE	FAK	BRV		
19.0	RIC	FAK	GVE			
22.5	RIC	FAK				
26.3	RIC	FAK	HPW	GVE		
26.7	RIC	FAK	GVE			
29.7	RIC	FAK	HPW	GVE		
30.4	RIC	GVE				
31.3	RIC	GVE	CCV			
33.6	LVL	RIC	CCV	GVE		

Inertial Drift Segments			
#	Start Location	End Location	Length [NM]

DME DME Assessment Results for CAVLR5 path BNTLY_DORRN

Available DMEs by Waypoints

Waypoint Before	Waypoint After	DME List	Suggested DMEs
BNTLY	KHOOD	FAK, BRV, GVE, RIC	
KHOOD	PERKN	FAK, BRV, GVE, RIC, HPW	
PERKN	DORRN	FAK, LVL, GVE, CCV, RIC, HPW	

User Data Files

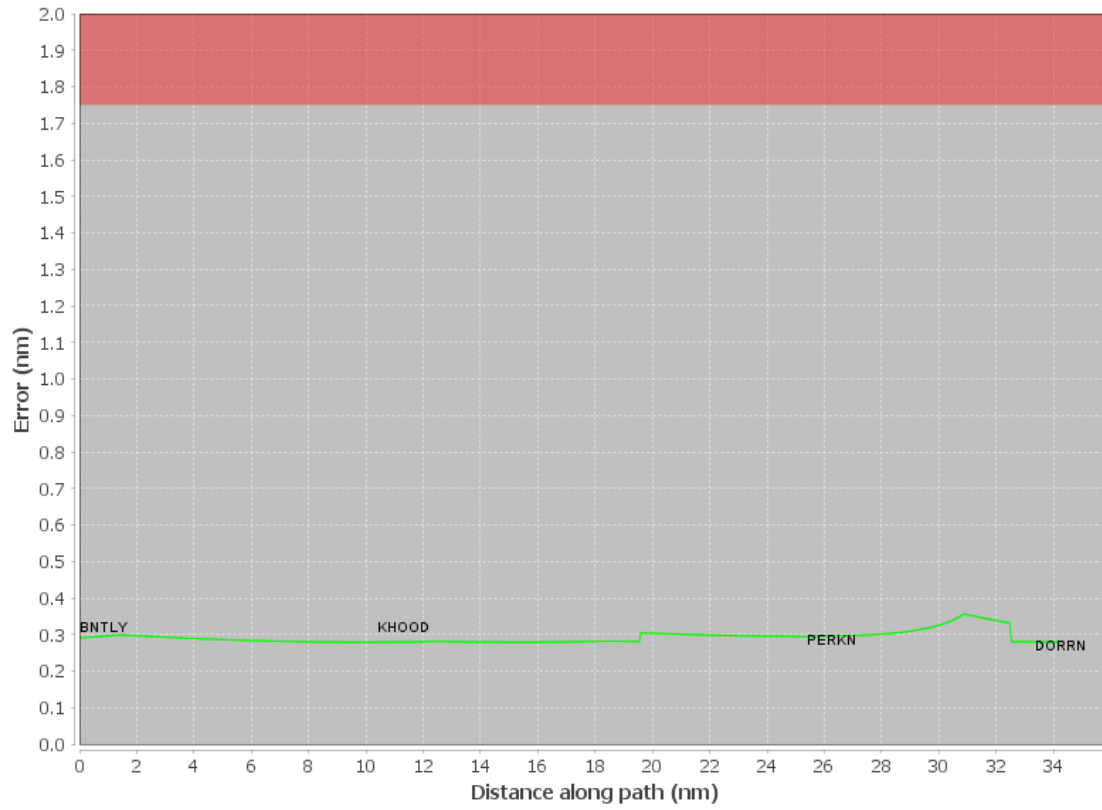
#	File Name
1	UserDMEsKIAD [IFPA] CAVLR5 RNAV STAR_20230601_1131 EDT.udt

User DMEs

#	Name	Lat/Lon	MAGVAR	Range	Elevation [ft]	Frequency	Replaces	Status
1	UDT ESV LVL LVL [IFPA]	N36° 49' 04.9290", W077° 54' 10.6850"	8.0 W	40	350	112.9	UDT ESV LVL	
	ESV:	Bearing [True]: 349.0° to 6.0° Bearing [Mag]: 357.0° to 14.0°				Arc Distance: Out to 56.0 NM Altitude: 3500.0 to 19000.0 ft		
2	UDT ESV CCV CCV [IFPA]	N37° 20' 51.1400", W075° 59' 51.5500"	10.0 W	40	9.7	112.2	UDT ESV CCV	
	ESV:	Bearing [True]: 260.0° to 280.0° Bearing [Mag]: 270.0° to 290.0°				Arc Distance: Out to 100.0 NM Altitude: 12000.0 to 16000.0 ft		
3	UDT ESV GVE GVE [IFPA]	N38° 00' 48.9578", W078° 09' 10.8957"	6.0 W	130	382.6	115.6	UDT ESV GVE	
	ESV:	Bearing [True]: 122.0° to 150.0° Bearing [Mag]: 128.0° to 156.0°				Arc Distance: Out to 51.0 NM Altitude: 4000.0 to 16000.0 ft		
4	UDT ESV GVE GVE [IFPA]	N38° 00' 48.9578", W078° 09' 10.8957"	6.0 W	130	382.6	115.6	UDT ESV GVE	
	ESV:	Bearing [True]: 122.0° to 150.0° Bearing [Mag]: 128.0° to 156.0°				Arc Distance: Out to 51.0 NM Altitude: 4000.0 to 16000.0 ft		
5	UDT ESV LVL LVL [IFPA]	N36° 49' 04.9290", W077° 54' 10.6850"	8.0 W	40	350	112.9	UDT ESV LVL	
	ESV:	Bearing [True]: 13.0° to 42.0° Bearing [Mag]: 21.0° to 50.0°				Arc Distance: Out to 65.0 NM Altitude: 10500.0 to 18000.0 ft		
6	UDT ESV LVL LVL [IFPA]	N36° 49' 04.9290", W077° 54' 10.6850"	8.0 W	40	350	112.9	UDT ESV LVL	
	ESV:	Bearing [True]: 349.0° to 6.0° Bearing [Mag]: 357.0° to 14.0°				Arc Distance: Out to 56.0 NM Altitude: 3500.0 to 19000.0 ft		
7	UDT ESV CCV CCV [IFPA]	N37° 20' 51.1400", W075° 59' 51.5500"	10.0 W	40	9.7	112.2	UDT ESV CCV	
	ESV:	Bearing [True]: 260.0° to 280.0° Bearing [Mag]: 270.0° to 290.0°				Arc Distance: Out to 100.0 NM Altitude: 12000.0 to 16000.0 ft		

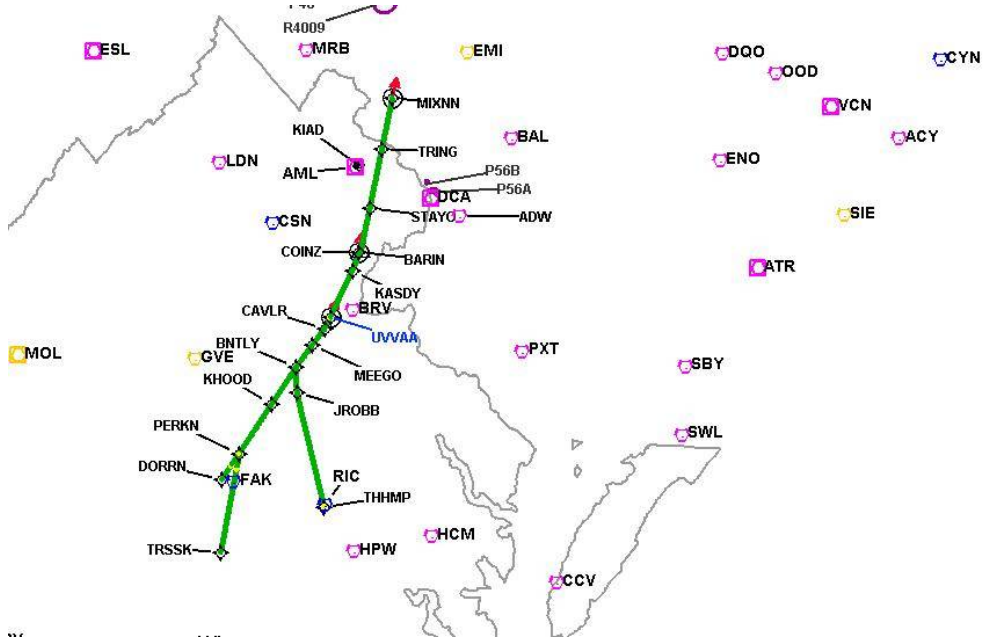
DME DME Assessment Results for CAVLR5 path BNTLY_DORRN

DME Error



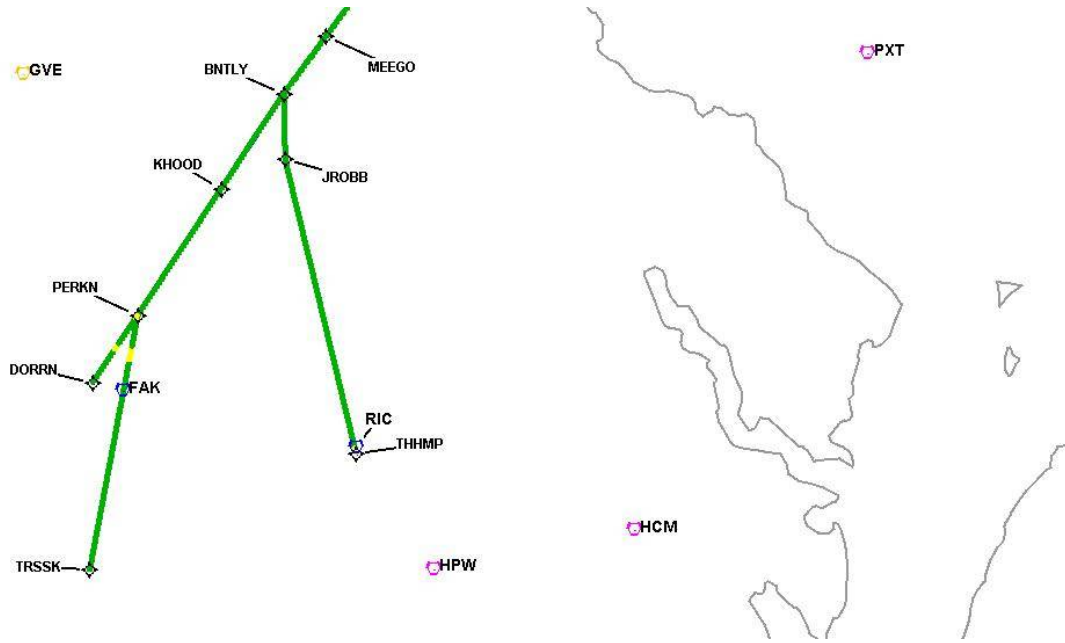
DME DME Assessment Results for CAVLR5 path BNTLY_DORRN

Graphic Depiction 1



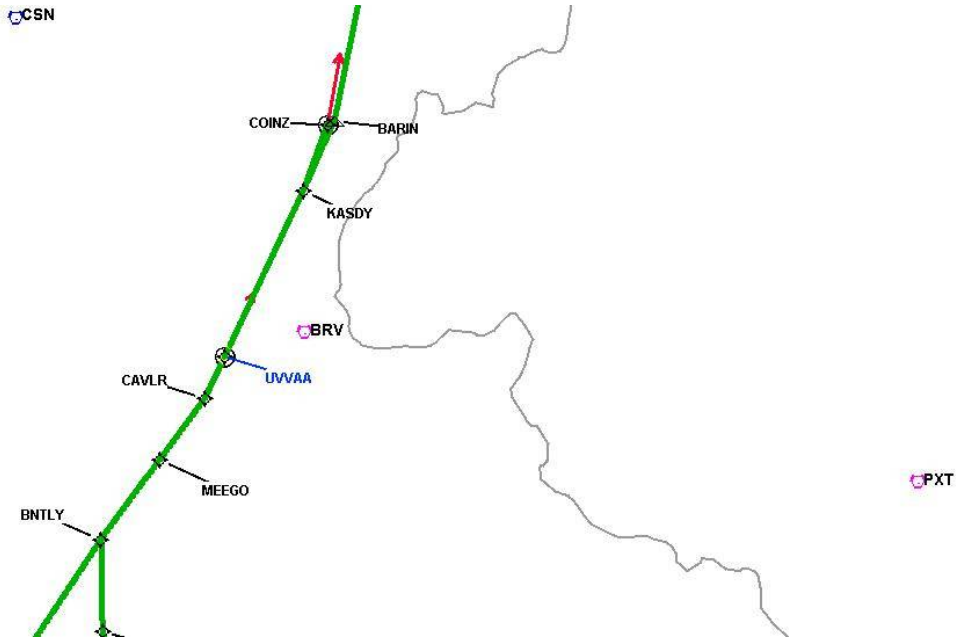
DME DME Assessment Results for CAVLR5 path BNTLY_DORRN

Graphic Depiction 2



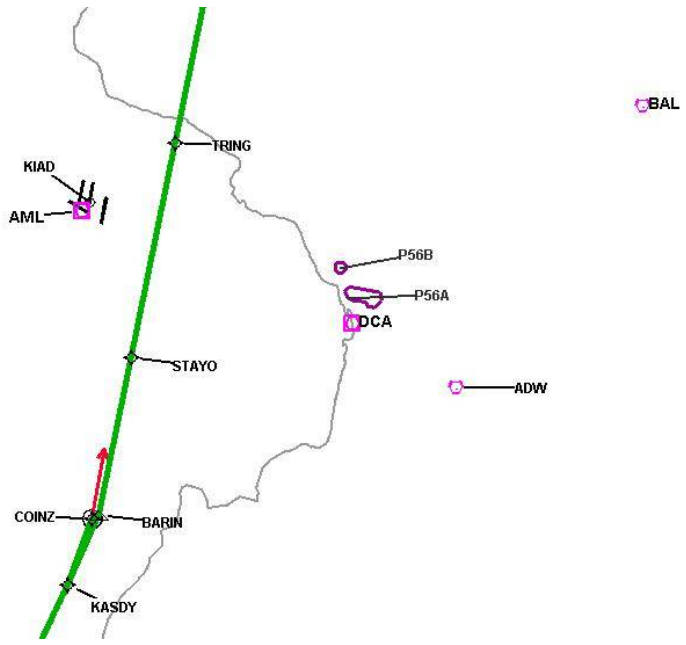
DME DME Assessment Results for CAVLR5 path BNTLY_DORRN

Graphic Depiction 3



DME DME Assessment Results for CAVLR5 path BNTLY_DORRN

Graphic Depiction 4

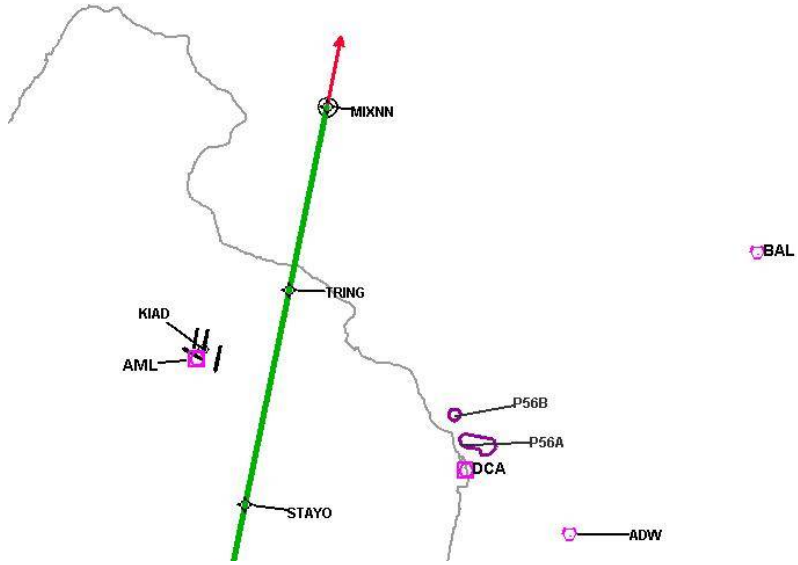


DME DME Assessment Results for CAVLR5 path BNTLY_DORRN

Graphic Depiction 5

MRB

EMI



DME DME Assessment Results for CAVLR5 path BNTLY_THHMP

Results Summary

Flyability:	Completed
DME/DME:	Completed - No Critical DMEs
Name:	David C-CTR Cook
Project File:	C:\Users\David C-CTR Cook\Documents\TARGETS WORK\KIAD 3-21-2024\AMENDED FOR FIXES\CAVLR5\KIAD CAVLR STAR 20231207.tgs
Output File:	C:\Users\David C-CTR Cook\Documents\TARGETS WORK\KIAD 3-21-2024\AMENDED FOR FIXES\CAVLR5\KIAD [IFPA] CAVLR5 20231208_0941 EST\BNTLY_THHMP\KIAD CAVLR5 RNAV STAR BNTLY THHMP 20231208_0941 EST.pdf
Procedure Name:	CAVLR5
Software: DmeDmePlugin:	7.2.1
Date/Time:	12/08/2023 09:41 EST
Databases:	DTED0.MAX

Failures

No Failures

Warnings

No Warnings

Informational

No Informational

Notes For Flight Check

None

Flight Plan

Name	Type	Lat/Lon	Altitude (ft)	VNAV Mode	Ground Speed (kts)	Turn Type	Leg Type
BNTLY	WP	N38° 03' 14.9900", W077° 36' 05.1600"	13000	VNAV	250	FLY_BY	TF
JROBB	WP	N37° 56' 52.7400", W077° 34' 30.9200"	13000	VNAV	250	FLY_BY	TF
THHMP	WP	N37° 29' 29.4700", W077° 19' 08.7500"	13000	VNAV	250	FLY_BY	TF

Flyability

Flight Type:	RNAV_STAR
Selected Airport:	KIAD [IFPA]
Climb Gradient:	None assigned
Speeds:	200 Ground Speed to 11000 FT
	240 Ground Speed to 18000 FT
	260 Ground Speed to 24000 FT
	340 Ground Speed above 24000 FT
Descent During a Turn:	Allowed
VNAV Mode:	Flight Plan

DME DME Assessment Results for CAVLR5 path BNTLY_THHMP

DME/DME	
RNP:	RNP 2
Flight Mode:	Manual
Line of Sight (DTED Level 0 Max):	Evaluated
Inertial Drift:	Enabled
Initial Drift:	0.558 NM
INS Drift Rate:	8.0 NM/Hour
Range Mode:	OSV
RNP Edges:	Evaluated
Min DME Range:	3.0 NM
DME Types:	DME, VOR-DME, VORTAC
DME Include Angles:	30 to 150
Critical DMEs:	Allowed
DoD Facilities:	Not included
Foreign Facilities:	Not included
High DMEs:	Included
Low DMEs:	Included
Terminal DMEs:	Included
Flight Check DMEs:	Not selected
Higher Altitudes:	Not Evaluated
Near Maximum Altitude:	Not Evaluated
Automatic ESVs:	Not enabled
Disabled DMEs:	FKN

DME/DME (Continued)										
DMEs Used										
#	Name	Lat/Lon	MAGVAR	Range	Type	Source	Critical	Status	Time	Distance
1	CCV	N37° 20' 51.1400", W075° 59' 51.5500"	10.0 W	40	L	IFPA	NO	Enabled	1.7 %	1.7 %
2	HPW	N37° 19' 43.9320", W077° 06' 57.3970"	6.0 W	40	L	IFPA	NO	Enabled	71.7 %	71.7 %
3	HCM	N37° 26' 55.1756", W076° 42' 40.8741"	7.0 W	40	L	IFPA	NO	Enabled	35.8 %	35.8 %
4	RIC	N37° 30' 08.4521", W077° 19' 12.9944"	9.0 W	130	H	IFPA	NO	Enabled	84.6 %	84.6 %
5	FAK	N37° 31' 42.6340", W077° 49' 41.5890"	6.0 W	130	H	IFPA	NO	Enabled	100 %	100 %
6	LVL	N36° 49' 04.9290", W077° 54' 10.6850"	8.0 W	40	L	IFPA	NO	Enabled	35.8 %	35.8 %
7	BRV	N38° 20' 10.5264", W077° 21' 10.3159"	9.0 W	40	L	IFPA	NO	Enabled	60.6 %	60.6 %
8	GVE	N38° 00' 48.9578", W078° 09' 10.8957"	6.0 W	130	H	IFPA	NO	Enabled	63.8 %	63.8 %
9	CSN	N38° 38' 28.3277", W077° 51' 55.7979"	6.0 W	130	H	IFPA	NO	Enabled	5.1 %	5.1 %
10	FKN	N36° 42' 51.2443", W077° 00' 44.5488"	9.0 W	40	L	IFPA	NO	Disabled		

Flight Check DME Selection						
Distance [NM]	Selected DMEs					Alternate
0.0	GVE	CSN	RIC	FAK	BRV	
1.9	RIC	GVE	FAK	BRV		
10.3	BRV	GVE	FAK	HPW	RIC	
21.0	HPW	FAK	RIC	LVL	BRV	
22.2	HPW	FAK	RIC	LVL		
23.4	LVL	HCM	RIC	FAK	HPW	
28.5	RIC	FAK	HPW	HCM		
30.9	LVL	HCM	HPW	FAK		
33.0	GVE	LVL	HPW	HCM	FAK	
34.8	LVL	HPW	HCM	FAK		
35.8	GVE	LVL	HPW	CCV	HCM	FAK

DME DME Assessment Results for CAVLR5 path BNTLY_THHMP

Inertial Drift Segments			
#	Start Location	End Location	Length [NM]

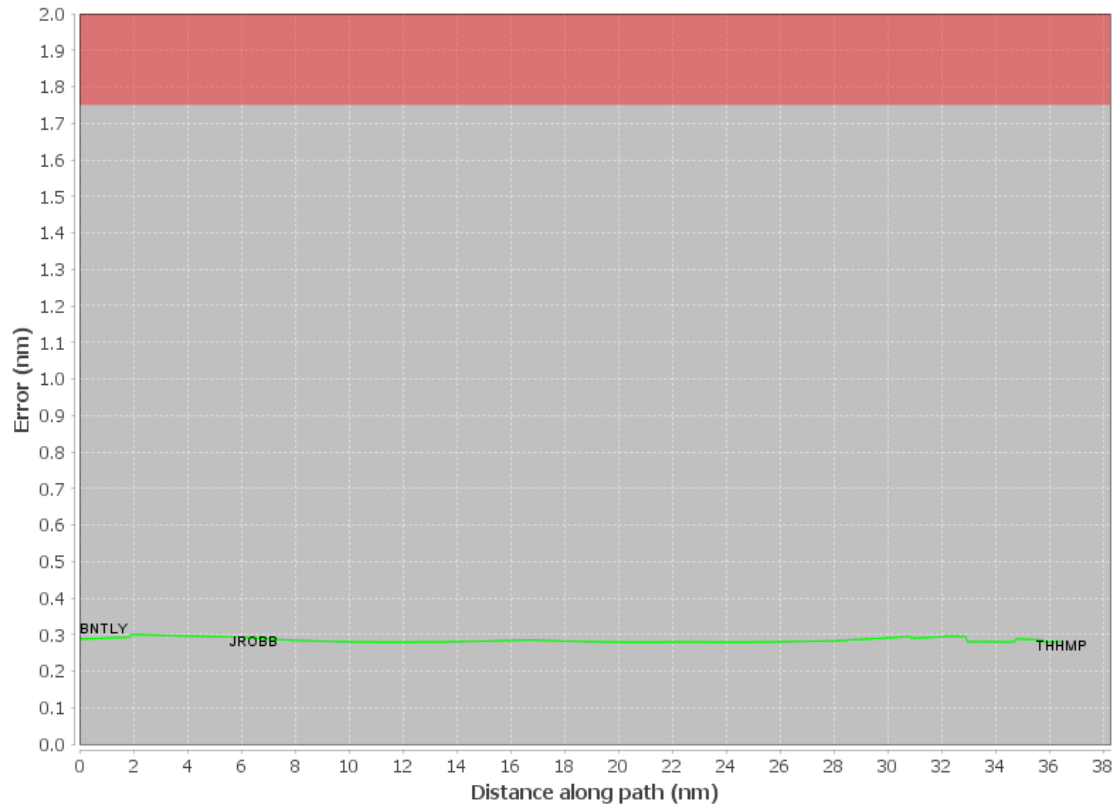
Available DMEs by Waypoints			
Waypoint Before	Waypoint After	DME List	Suggested DMEs
BNTLY	JROBB	FAK, BRV, GVE, RIC, CSN	
JROBB	THHMP	FAK, LVL, HCM, BRV, GVE, CCV, RIC, HPW	

User Data Files	
#	File Name
1	UserDMEsKIAD [IFPA] CAVLR5 RNAV STAR_20230601_1131 EDT.udt

User DMEs								
#	Name	Lat/Lon	MAGVAR	Range	Elevation [ft]	Frequency	Replaces	Status
1	UDT ESV LVL LVL [IFPA]	N36° 49' 04.9290", W077° 54' 10.6850"	8.0 W	40	350	112.9	UDT ESV LVL	
ESV:		Bearing [True]: 349.0° to 6.0° Bearing [Mag]: 357.0° to 14.0°			Arc Distance: Out to 56.0 NM Altitude: 3500.0 to 19000.0 ft			
2	UDT ESV CCV CCV [IFPA]	N37° 20' 51.1400", W075° 59' 51.5500"	10.0 W	40	9.7	112.2	UDT ESV CCV	
ESV:		Bearing [True]: 260.0° to 280.0° Bearing [Mag]: 270.0° to 290.0°			Arc Distance: Out to 100.0 NM Altitude: 12000.0 to 16000.0 ft			
3	UDT ESV GVE GVE [IFPA]	N38° 00' 48.9578", W078° 09' 10.8957"	6.0 W	130	382.6	115.6	UDT ESV GVE	
ESV:		Bearing [True]: 122.0° to 150.0° Bearing [Mag]: 128.0° to 156.0°			Arc Distance: Out to 51.0 NM Altitude: 4000.0 to 16000.0 ft			
4	UDT ESV GVE GVE [IFPA]	N38° 00' 48.9578", W078° 09' 10.8957"	6.0 W	130	382.6	115.6	UDT ESV GVE	
ESV:		Bearing [True]: 122.0° to 150.0° Bearing [Mag]: 128.0° to 156.0°			Arc Distance: Out to 51.0 NM Altitude: 4000.0 to 16000.0 ft			
5	UDT ESV LVL LVL [IFPA]	N36° 49' 04.9290", W077° 54' 10.6850"	8.0 W	40	350	112.9	UDT ESV LVL	
ESV:		Bearing [True]: 13.0° to 42.0° Bearing [Mag]: 21.0° to 50.0°			Arc Distance: Out to 65.0 NM Altitude: 10500.0 to 18000.0 ft			
6	UDT ESV LVL LVL [IFPA]	N36° 49' 04.9290", W077° 54' 10.6850"	8.0 W	40	350	112.9	UDT ESV LVL	
ESV:		Bearing [True]: 349.0° to 6.0° Bearing [Mag]: 357.0° to 14.0°			Arc Distance: Out to 56.0 NM Altitude: 3500.0 to 19000.0 ft			
7	UDT ESV CCV CCV [IFPA]	N37° 20' 51.1400", W075° 59' 51.5500"	10.0 W	40	9.7	112.2	UDT ESV CCV	
ESV:		Bearing [True]: 260.0° to 280.0° Bearing [Mag]: 270.0° to 290.0°			Arc Distance: Out to 100.0 NM Altitude: 12000.0 to 16000.0 ft			

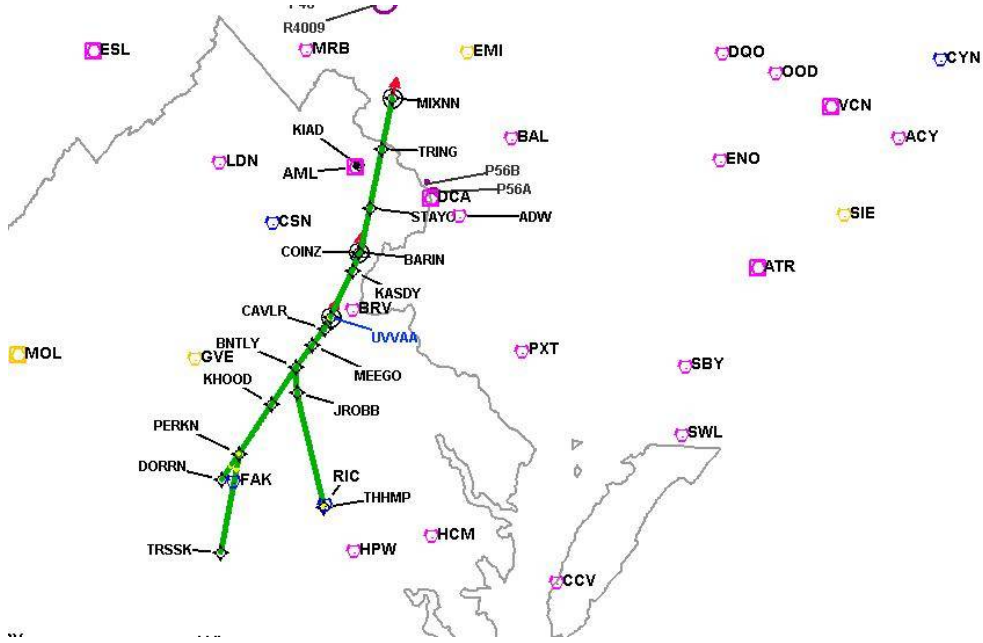
DME DME Assessment Results for CAVLR5 path BNTLY_THHMP

DME Error



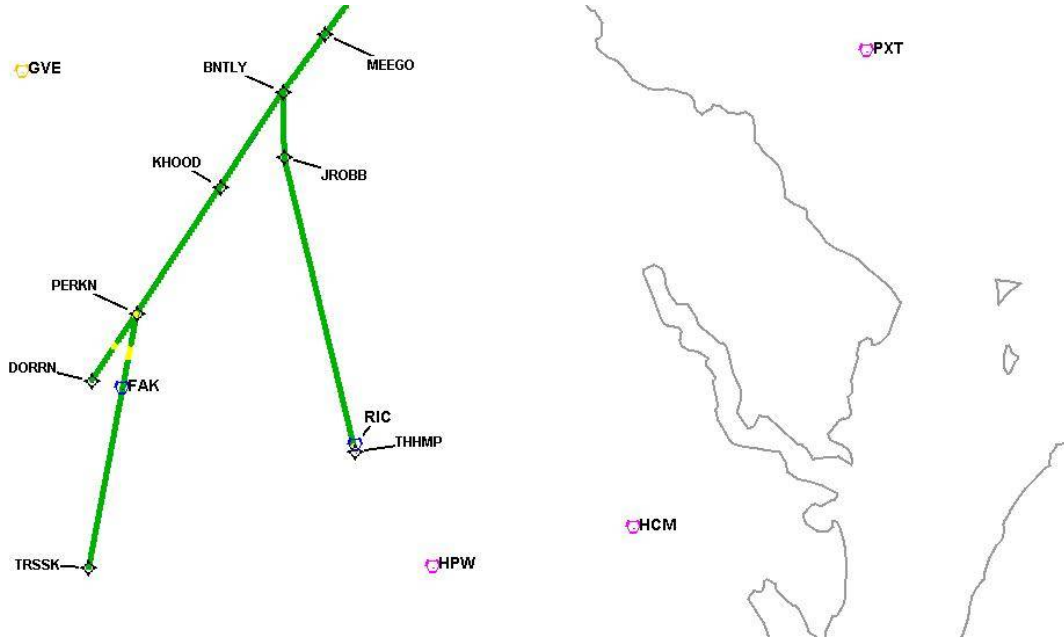
DME DME Assessment Results for CAVLR5 path BNTLY_THHMP

Graphic Depiction 1



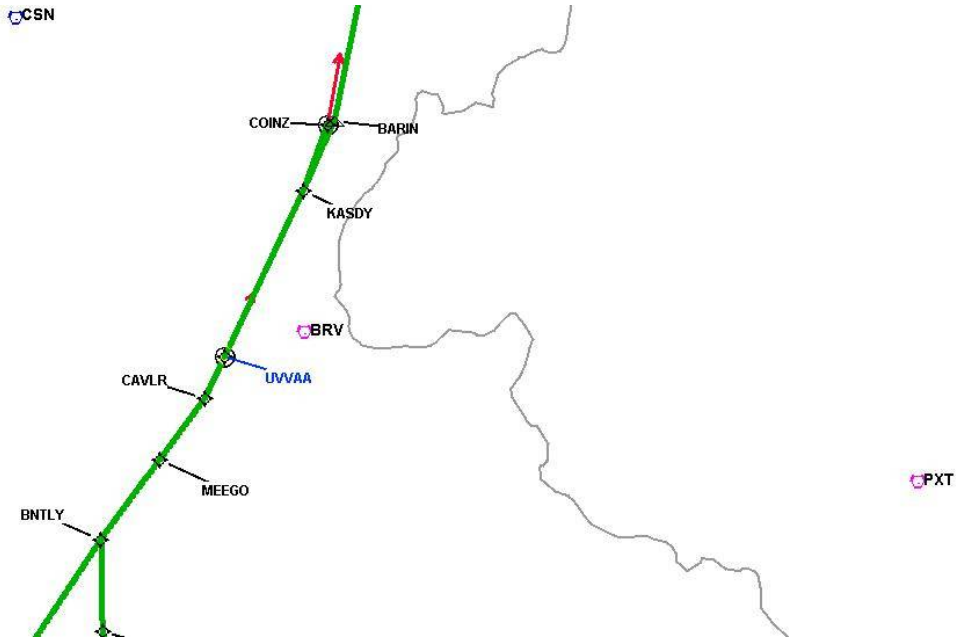
DME DME Assessment Results for CAVLR5 path BNTLY_THHMP

Graphic Depiction 2



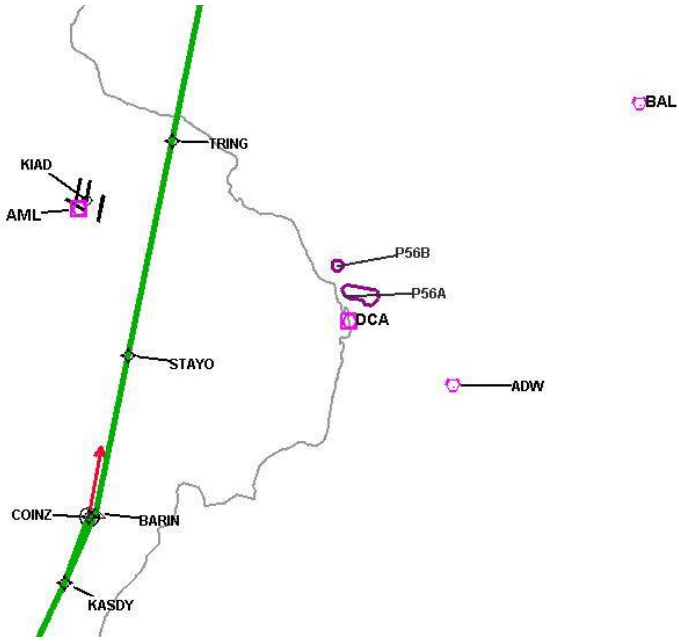
DME DME Assessment Results for CAVLR5 path BNTLY_THHMP

Graphic Depiction 3



DME DME Assessment Results for CAVLR5 path BNTLY_THHMP

Graphic Depiction 4

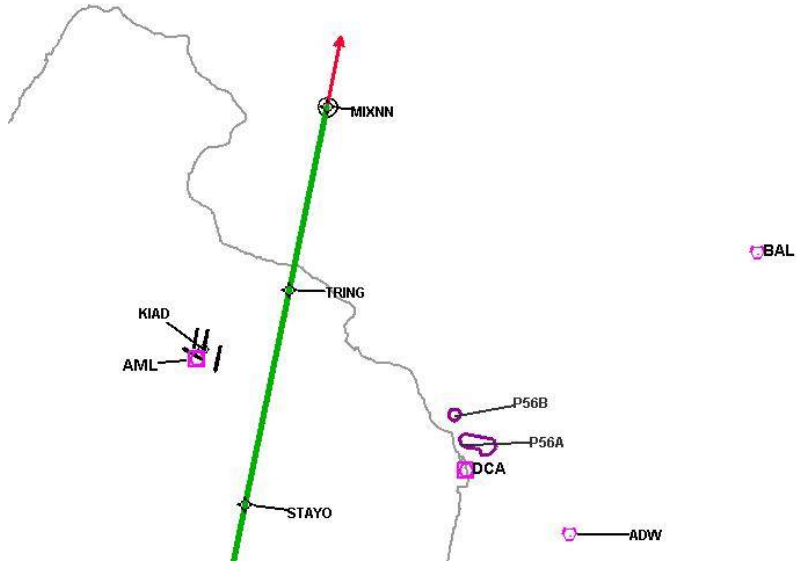


DME DME Assessment Results for CAVLR5 path BNTLY_THHMP

Graphic Depiction 5

MRB

EMI



DME DME Assessment Results for CAVLR5 path BNTLY_TRSSK

Results Summary

Flyability:	Completed
DME/DME:	Completed - No Critical DMEs
Name:	David C-CTR Cook
Project File:	C:\Users\David C-CTR Cook\Documents\TARGETS WORK\KIAD 3-21-2024\AMENDED FOR FIXES\CAVLR5\KIAD CAVLR STAR 20231207.tgs
Output File:	C:\Users\David C-CTR Cook\Documents\TARGETS WORK\KIAD 3-21-2024\AMENDED FOR FIXES\CAVLR5\KIAD [IFPA] CAVLR5 20231208_0941 EST\BNTLY_TRSSK\KIAD CAVLR5 RNAV STAR BNTLY TRSSK 20231208_0941 EST.pdf
Procedure Name:	CAVLR5
Software: DmeDmePlugin:	7.2.1
Date/Time:	12/08/2023 09:41 EST
Databases:	DTED0.MAX

Failures

No Failures

Warnings

No Warnings

Informational

No Informational

Notes For Flight Check

None

Flight Plan

Name	Type	Lat/Lon	Altitude (ft)	VNAV Mode	Ground Speed (kts)	Turn Type	Leg Type
BNTLY	WP	N38° 03' 14.9900", W077° 36' 05.1600"	13000	VNAV	250	FLY_BY	TF
KHOOD	WP	N37° 52' 55.2400", W077° 41' 51.5700"	13000	VNAV	250	FLY_BY	TF
PERKN	WP	N37° 39' 11.9300", W077° 49' 28.8100"	13000	VNAV	250	FLY_BY	TF
TRSSK	WP	N37° 13' 38.4100", W077° 49' 52.2500"	13000	VNAV	250	FLY_BY	TF

Flyability

Flight Type:	RNAV_STAR
Selected Airport:	KIAD [IFPA]
Climb Gradient:	None assigned
Speeds:	200 Ground Speed to 11000 FT
	240 Ground Speed to 18000 FT
	260 Ground Speed to 24000 FT
	340 Ground Speed above 24000 FT
Descent During a Turn:	Allowed
VNAV Mode:	Flight Plan

DME DME Assessment Results for CAVLR5 path BNTLY_TRSSK

DME/DME	
RNP:	RNP 2
Flight Mode:	Manual
Line of Sight (DTED Level 0 Max):	Evaluated
Inertial Drift:	Enabled
Initial Drift:	0.558 NM
INS Drift Rate:	8.0 NM/Hour
Range Mode:	OSV
RNP Edges:	Evaluated
Min DME Range:	3.0 NM
DME Types:	DME, VOR-DME, VORTAC
DME Include Angles:	30 to 150
Critical DMEs:	Allowed
DoD Facilities:	Not included
Foreign Facilities:	Not included
High DMEs:	Included
Low DMEs:	Included
Terminal DMEs:	Included
Flight Check DMEs:	Not selected
Higher Altitudes:	Not Evaluated
Near Maximum Altitude:	Not Evaluated
Automatic ESVs:	Not enabled
Disabled DMEs:	FKN

DME/DME (Continued)										
DMEs Used										
#	Name	Lat/Lon	MAGVAR	Range	Type	Source	Critical	Status	Time	Distance
1	CCV	N37° 20' 51.1400", W075° 59' 51.5500"	10.0 W	40	L	IFPA	NO	Enabled	11.5 %	11.5 %
2	HPW	N37° 19' 43.9320", W077° 06' 57.3970"	6.0 W	40	L	IFPA	NO	Enabled	38.8 %	38.9 %
3	RIC	N37° 30' 08.4521", W077° 19' 12.9944"	9.0 W	130	H	IFPA	NO	Enabled	100 %	100 %
4	FAK	N37° 31' 42.6340", W077° 49' 41.5890"	6.0 W	130	H	IFPA	NO	Enabled	88.2 %	88.2 %
5	LVL	N36° 49' 04.9290", W077° 54' 10.6850"	8.0 W	40	L	IFPA	NO	Enabled	28.4 %	28.4 %
6	BRV	N38° 20' 10.5264", W077° 21' 10.3159"	9.0 W	40	L	IFPA	NO	Enabled	36.6 %	36.6 %
7	GVE	N38° 00' 48.9578", W078° 09' 10.8957"	6.0 W	130	H	IFPA	NO	Enabled	65.6 %	65.6 %
8	FKN	N36° 42' 51.2443", W077° 00' 44.5488"	9.0 W	40	L	IFPA	NO	Disabled		

Flight Check DME Selection						
Distance [NM]	Selected DMEs					Alternate
0.0	FAK	GVE	BRV	RIC		
7.7	BRV	RIC	GVE	FAK		
11.2	RIC	FAK	GVE			
14.9	RIC	FAK				
15.0	RIC	FAK				
16.7	RIC	FAK	GVE			
18.2	RIC	FAK	HPW	GVE		
19.5	RIC	GVE	CCV			
21.6	RIC	GVE	CCV	HPW		
25.5	RIC	FAK	GVE	HPW		
25.8	RIC	FAK	HPW	LVL	GVE	
28.3	HPW	LVL	RIC	FAK		

DME DME Assessment Results for CAVLR5 path BNTLY_TRSSK

Inertial Drift Segments			
#	Start Location	End Location	Length [NM]

Available DMEs by Waypoints			
Waypoint Before	Waypoint After	DME List	Suggested DMEs
BNTLY	KHOOD	FAK, BRV, GVE, RIC	
KHOOD	PERKN	FAK, GVE, BRV, RIC, HPW	
PERKN	TRSSK	FAK, LVL, GVE, CCV, RIC, HPW	

User Data Files

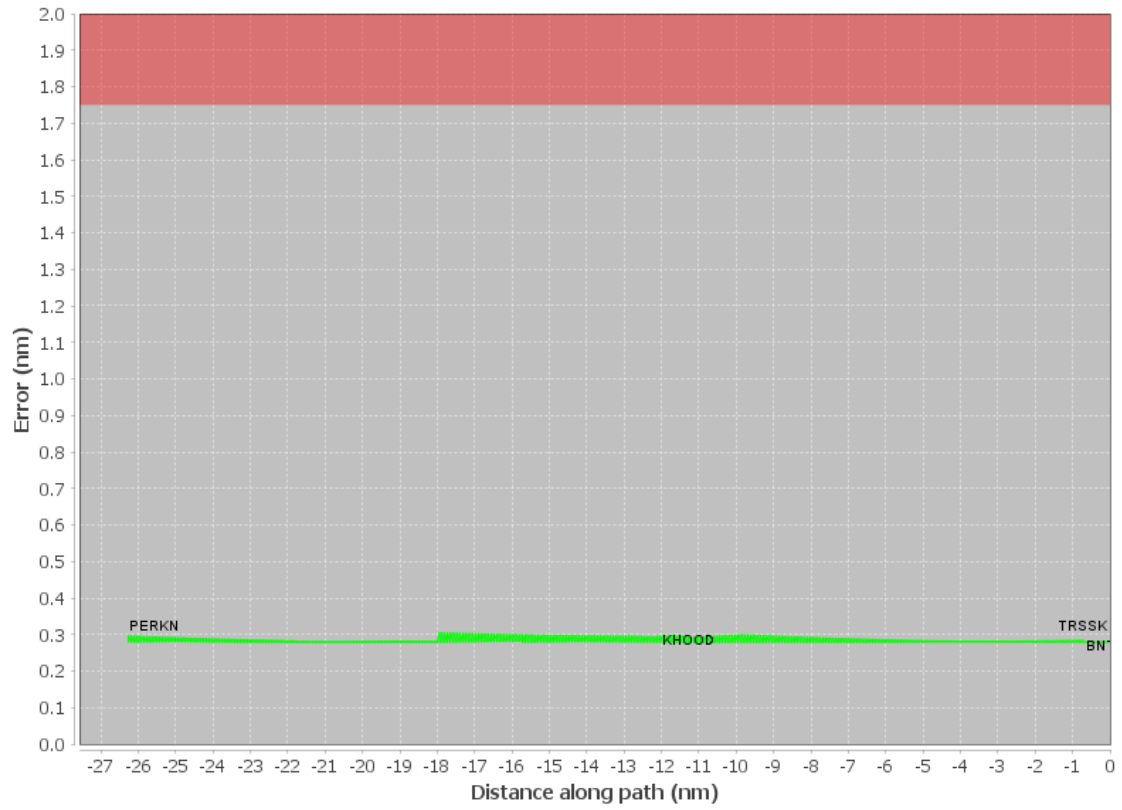
#	File Name
1	UserDMEsKIAD [IFPA] CAVLR5 RNAV STAR_20230601_1131 EDT.udt

User DMEs

#	Name	Lat/Lon	MAGVAR	Range	Elevation [ft]	Frequency	Replaces	Status
1	UDT ESV LVL LVL [IFPA]	N36° 49' 04.9290", W077° 54' 10.6850"	8.0 W	40	350	112.9	UDT ESV LVL	
	ESV:	Bearing [True]: 349.0° to 6.0° Bearing [Mag]: 357.0° to 14.0°				Arc Distance: Out to 56.0 NM Altitude: 3500.0 to 19000.0 ft		
2	UDT ESV CCV CCV [IFPA]	N37° 20' 51.1400", W075° 59' 51.5500"	10.0 W	40	9.7	112.2	UDT ESV CCV	
	ESV:	Bearing [True]: 260.0° to 280.0° Bearing [Mag]: 270.0° to 290.0°				Arc Distance: Out to 100.0 NM Altitude: 12000.0 to 16000.0 ft		
3	UDT ESV GVE GVE [IFPA]	N38° 00' 48.9578", W078° 09' 10.8957"	6.0 W	130	382.6	115.6	UDT ESV GVE	
	ESV:	Bearing [True]: 122.0° to 150.0° Bearing [Mag]: 128.0° to 156.0°				Arc Distance: Out to 51.0 NM Altitude: 4000.0 to 16000.0 ft		
4	UDT ESV GVE GVE [IFPA]	N38° 00' 48.9578", W078° 09' 10.8957"	6.0 W	130	382.6	115.6	UDT ESV GVE	
	ESV:	Bearing [True]: 122.0° to 150.0° Bearing [Mag]: 128.0° to 156.0°				Arc Distance: Out to 51.0 NM Altitude: 4000.0 to 16000.0 ft		
5	UDT ESV LVL LVL [IFPA]	N36° 49' 04.9290", W077° 54' 10.6850"	8.0 W	40	350	112.9	UDT ESV LVL	
	ESV:	Bearing [True]: 13.0° to 42.0° Bearing [Mag]: 21.0° to 50.0°				Arc Distance: Out to 65.0 NM Altitude: 10500.0 to 18000.0 ft		
6	UDT ESV LVL LVL [IFPA]	N36° 49' 04.9290", W077° 54' 10.6850"	8.0 W	40	350	112.9	UDT ESV LVL	
	ESV:	Bearing [True]: 349.0° to 6.0° Bearing [Mag]: 357.0° to 14.0°				Arc Distance: Out to 56.0 NM Altitude: 3500.0 to 19000.0 ft		
7	UDT ESV CCV CCV [IFPA]	N37° 20' 51.1400", W075° 59' 51.5500"	10.0 W	40	9.7	112.2	UDT ESV CCV	
	ESV:	Bearing [True]: 260.0° to 280.0° Bearing [Mag]: 270.0° to 290.0°				Arc Distance: Out to 100.0 NM Altitude: 12000.0 to 16000.0 ft		

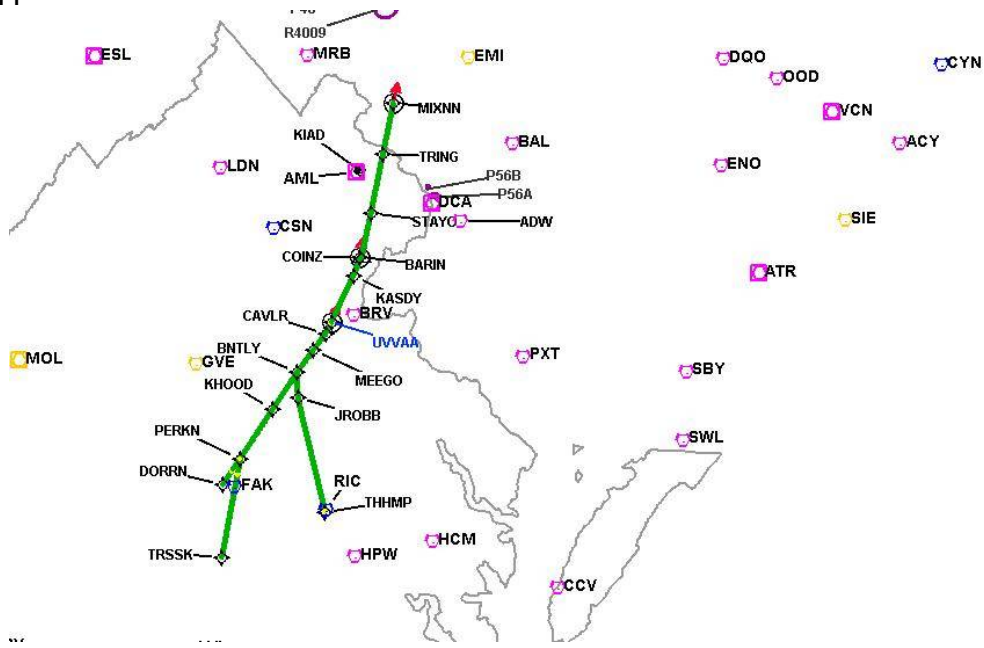
DME DME Assessment Results for CAVLR5 path BNTLY_TRSSK

DME Error



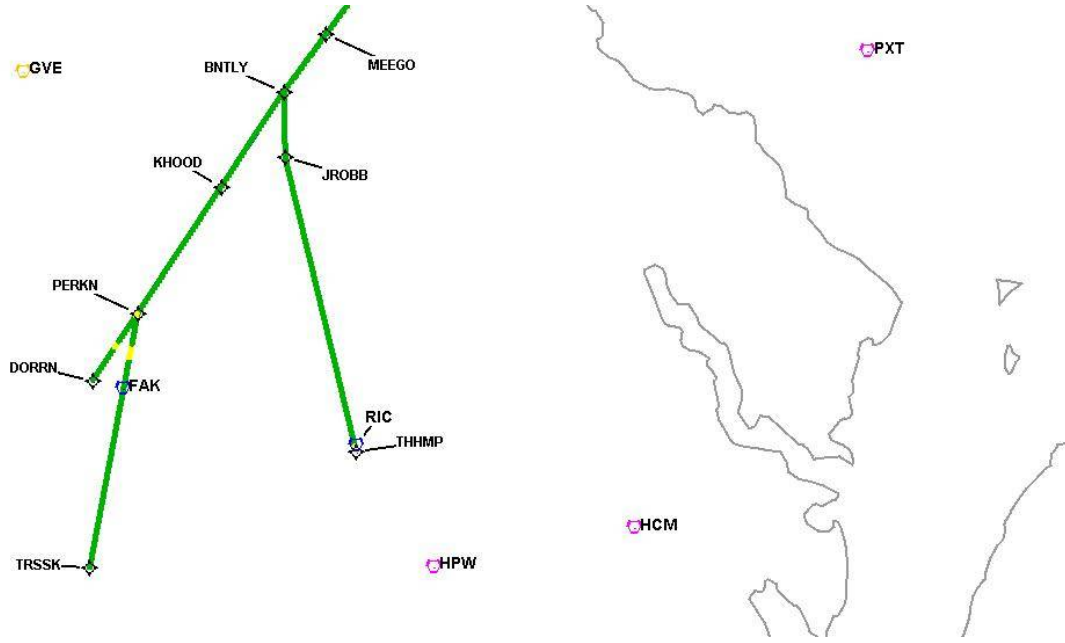
DME DME Assessment Results for CAVLR5 path BNTLY_TRSSK

Graphic Depiction 1



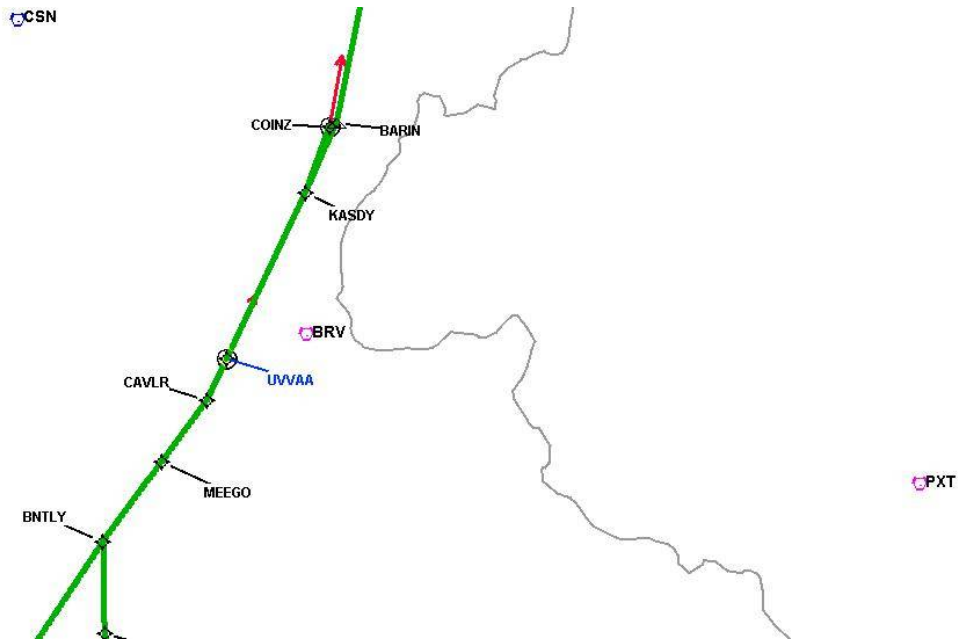
DME DME Assessment Results for CAVLR5 path BNTLY_TRSSK

Graphic Depiction 2



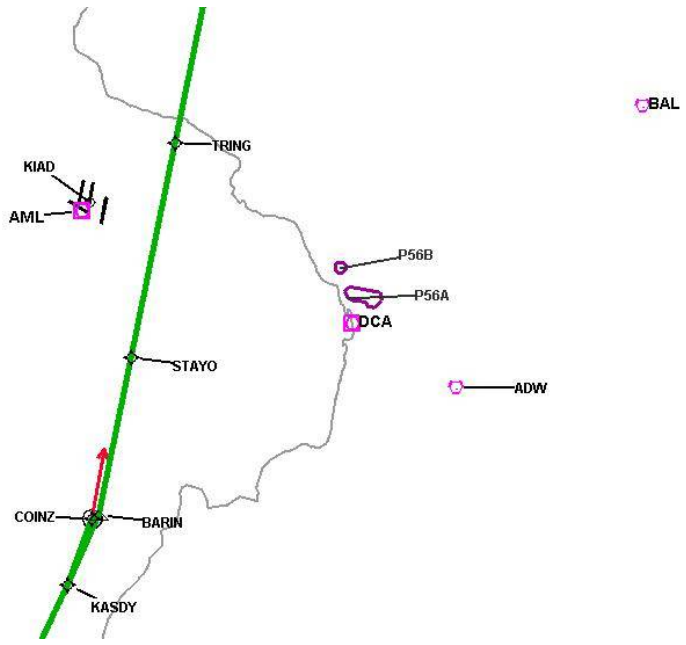
DME DME Assessment Results for CAVLR5 path BNTLY_TRSSK

Graphic Depiction 3



DME DME Assessment Results for CAVLR5 path BNTLY_TRSSK

Graphic Depiction 4

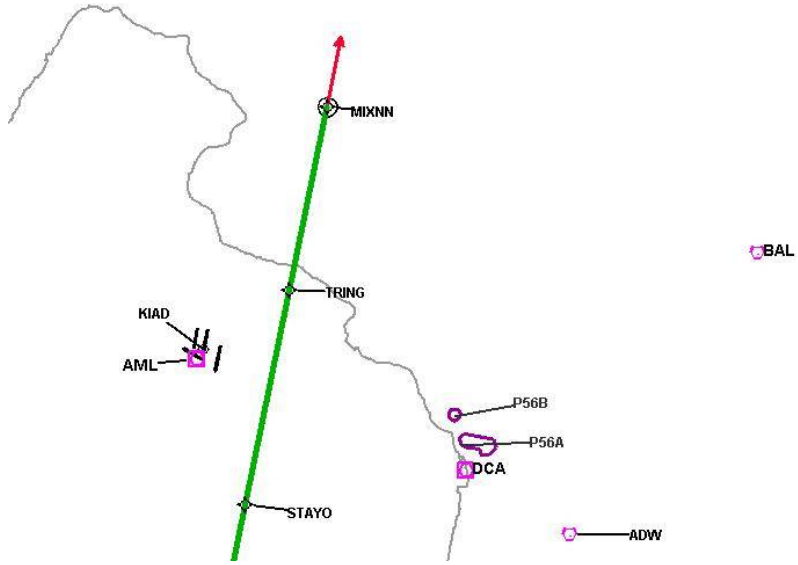


DME DME Assessment Results for CAVLR5 path BNTLY_TRSSK

Graphic Depiction 5

MRB

EMI



DME DME Assessment Results for CAVLR5 path CAVLR_UVVAA

Results Summary	
Flyability:	Completed
DME/DME:	Completed - No Critical DMEs
Name:	David C-CTR Cook
Project File:	C:\Users\David C-CTR Cook\Documents\TARGETS WORK\KIAD 3-21-2024\AMENDED FOR FIXES\CAVLR5\KIAD CAVLR STAR 20231207.tgs
Output File:	C:\Users\David C-CTR Cook\Documents\TARGETS WORK\KIAD 3-21-2024\AMENDED FOR FIXES\CAVLR5\KIAD [IFPA] CAVLR5 20231208_0941 EST\CAVLR_UVVAA\KIAD CAVLR5 RNAV STAR CAVLR_UVVAA 20231208_0941 EST.pdf
Procedure Name:	CAVLR5
Software: DmeDmePlugin:	7.2.1
Date/Time:	12/08/2023 09:41 EST
Databases:	DTED0.MAX

Failures
No Failures

Warnings
No Warnings

Informational
No Informational

Notes For Flight Check
None

Flight Plan							
Name	Type	Lat/Lon	Altitude (ft)	VNAV Mode	Ground Speed (kts)	Turn Type	Leg Type
CAVLR	WP	N38° 14' 21.1400", W077° 29' 00.9000"	10000	VNAV	250	FLY_BY	TF
UVVAA	WP	N38° 17' 26.3283", W077° 27' 55.6312"	9000	VNAV	250	FLY_OVER	TF

Flyability	
Flight Type:	RNAV_STAR
Selected Airport:	KIAD [IFPA]
Climb Gradient:	None assigned
Speeds:	200 Ground Speed to 11000 FT
	240 Ground Speed to 18000 FT
	260 Ground Speed to 24000 FT
	340 Ground Speed above 24000 FT
Descent During a Turn:	Allowed
VNAV Mode:	Flight Plan

DME DME Assessment Results for CAVLR5 path CAVLR_UVVAA

DME/DME	
RNP:	RNP 2
Flight Mode:	Manual
Line of Sight (DTED Level 0 Max):	Evaluated
Inertial Drift:	Enabled
Initial Drift:	0.558 NM
INS Drift Rate:	8.0 NM/Hour
Range Mode:	OSV
RNP Edges:	Evaluated
Min DME Range:	3.0 NM
DME Types:	DME, VOR-DME, VORTAC
DME Include Angles:	30 to 150
Critical DMEs:	Allowed
DoD Facilities:	Not included
Foreign Facilities:	Not included
High DMEs:	Included
Low DMEs:	Included
Terminal DMEs:	Included
Flight Check DMEs:	Not selected
Higher Altitudes:	Not Evaluated
Near Maximum Altitude:	Not Evaluated
Automatic ESVs:	Not enabled
Disabled DMEs:	FKN

DME/DME (Continued)										
DMEs Used										
#	Name	Lat/Lon	MAGVAR	Range	Type	Source	Critical	Status	Time	Distance
1	BRV	N38° 20' 10.5264", W077° 21' 10.3159"	9.0 W	40	L	IFPA	NO	Enabled	100 %	100 %
2	CSN	N38° 38' 28.3277", W077° 51' 55.7979"	6.0 W	130	H	IFPA	NO	Enabled	100 %	100 %
3	GVE	N38° 00' 48.9578", W078° 09' 10.8957"	6.0 W	130	H	IFPA	NO	Enabled	100 %	100 %
4	AML	N38° 56' 04.5329", W077° 28' 00.1263"	8.0 W	40	L	IFPA	NO	Enabled	10.6 %	10.6 %
5	DCA	N38° 51' 34.0300", W077° 02' 11.1700"	9.0 W	40	L	IFPA	NO	Enabled	6.4 %	6.4 %
6	FKN	N36° 42' 51.2443", W077° 00' 44.5488"	9.0 W	40	L	IFPA	NO	Disabled		

Flight Check DME Selection						
Distance [NM]	Selected DMEs					Alternate
0.0	BRV	CSN	GVE			
2.9	BRV	CSN	GVE	DCA	AML	
3.1	BRV	CSN	GVE	AML		

Inertial Drift Segments			
#	Start Location	End Location	Length [NM]

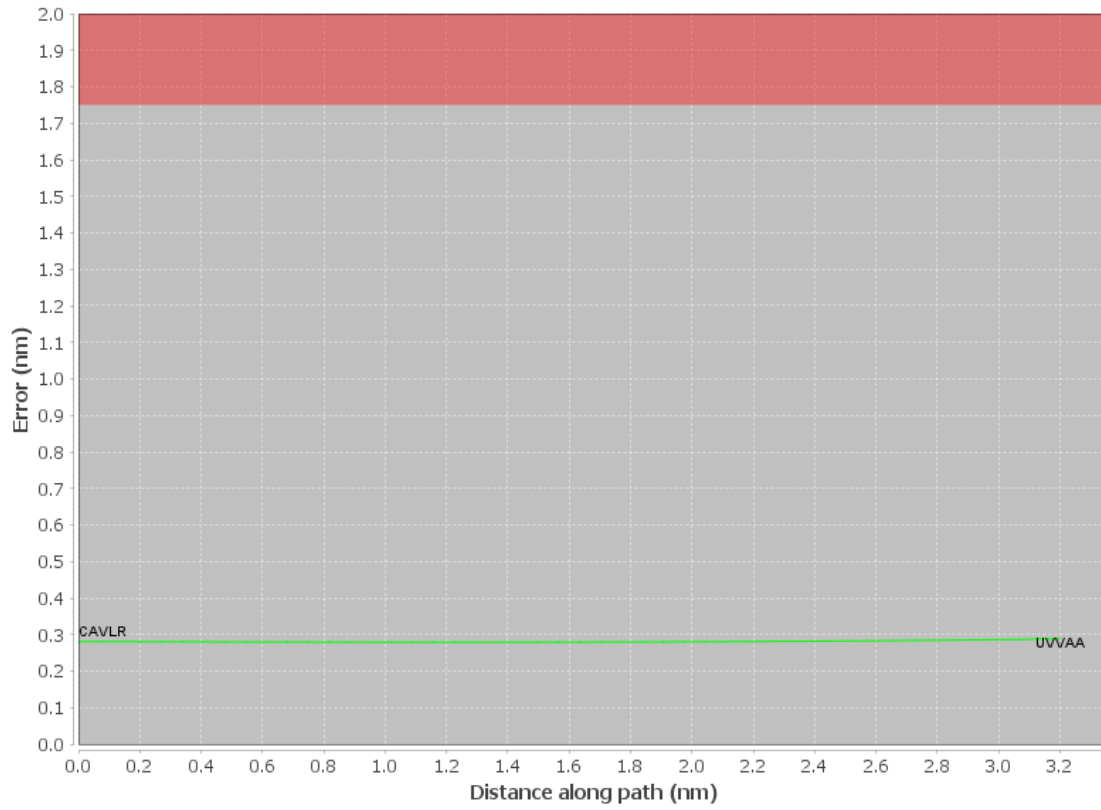
Available DMEs by Waypoints			
Waypoint Before	Waypoint After	DME List	Suggested DMEs
CAVLR	UVVAA	AML, DCA, BRV, GVE, CSN	

DME DME Assessment Results for CAVLR5 path CAVLR_UVVAA

User Data Files								
#	File Name							
1	UserDMesKIAD [IFPA] CAVLR5 RNAV STAR_20230601_1131 EDT.udt							
User DMEs								
#	Name	Lat/Lon	MAGVAR	Range	Elevation [ft]	Frequency	Replaces	Status
1	UDT ESV LVL LVL [IFPA]	N36° 49' 04.9290", W077° 54' 10.6850"	8.0 W	40	350	112.9	UDT ESV LVL	
	ESV:	Bearing [True]: 349.0° to 6.0° Bearing [Mag]: 357.0° to 14.0°				Arc Distance: Out to 56.0 NM Altitude: 3500.0 to 19000.0 ft		
2	UDT ESV CCV CCV [IFPA]	N37° 20' 51.1400", W075° 59' 51.5500"	10.0 W	40	9.7	112.2	UDT ESV CCV	
	ESV:	Bearing [True]: 260.0° to 280.0° Bearing [Mag]: 270.0° to 290.0°				Arc Distance: Out to 100.0 NM Altitude: 12000.0 to 16000.0 ft		
3	UDT ESV GVE GVE [IFPA]	N38° 00' 48.9578", W078° 09' 10.8957"	6.0 W	130	382.6	115.6	UDT ESV GVE	
	ESV:	Bearing [True]: 122.0° to 150.0° Bearing [Mag]: 128.0° to 156.0°				Arc Distance: Out to 51.0 NM Altitude: 4000.0 to 16000.0 ft		
4	UDT ESV GVE GVE [IFPA]	N38° 00' 48.9578", W078° 09' 10.8957"	6.0 W	130	382.6	115.6	UDT ESV GVE	
	ESV:	Bearing [True]: 122.0° to 150.0° Bearing [Mag]: 128.0° to 156.0°				Arc Distance: Out to 51.0 NM Altitude: 4000.0 to 16000.0 ft		
5	UDT ESV LVL LVL [IFPA]	N36° 49' 04.9290", W077° 54' 10.6850"	8.0 W	40	350	112.9	UDT ESV LVL	
	ESV:	Bearing [True]: 13.0° to 42.0° Bearing [Mag]: 21.0° to 50.0°				Arc Distance: Out to 65.0 NM Altitude: 10500.0 to 18000.0 ft		
6	UDT ESV LVL LVL [IFPA]	N36° 49' 04.9290", W077° 54' 10.6850"	8.0 W	40	350	112.9	UDT ESV LVL	
	ESV:	Bearing [True]: 349.0° to 6.0° Bearing [Mag]: 357.0° to 14.0°				Arc Distance: Out to 56.0 NM Altitude: 3500.0 to 19000.0 ft		
7	UDT ESV CCV CCV [IFPA]	N37° 20' 51.1400", W075° 59' 51.5500"	10.0 W	40	9.7	112.2	UDT ESV CCV	
	ESV:	Bearing [True]: 260.0° to 280.0° Bearing [Mag]: 270.0° to 290.0°				Arc Distance: Out to 100.0 NM Altitude: 12000.0 to 16000.0 ft		

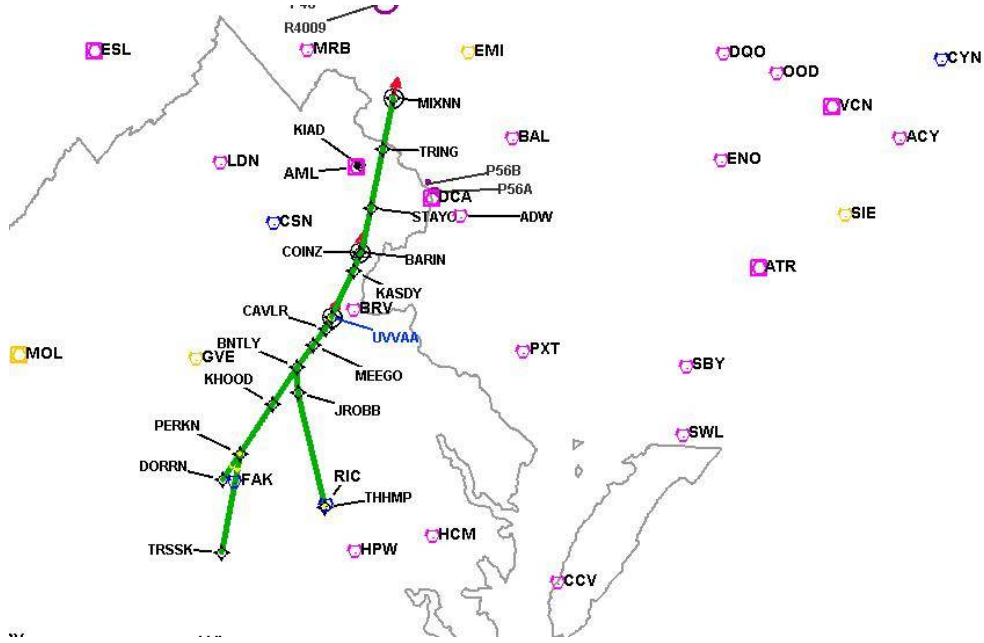
DME DME Assessment Results for CAVLR5 path CAVLR_UVVAA

DME Error



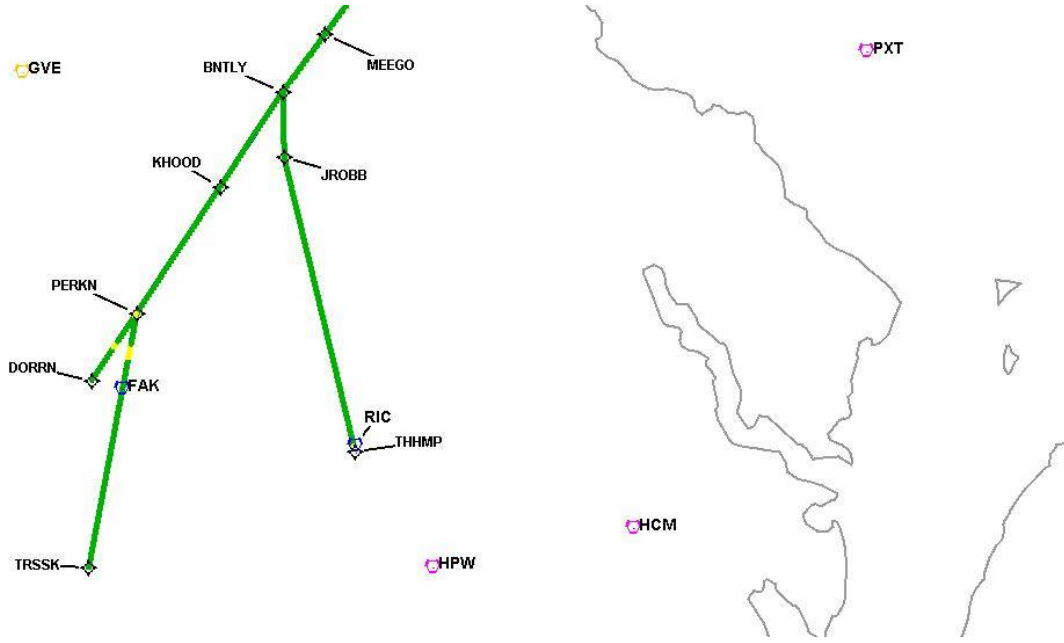
DME DME Assessment Results for CAVLR5 path CAVLR_UVVAA

Graphic Depiction 1



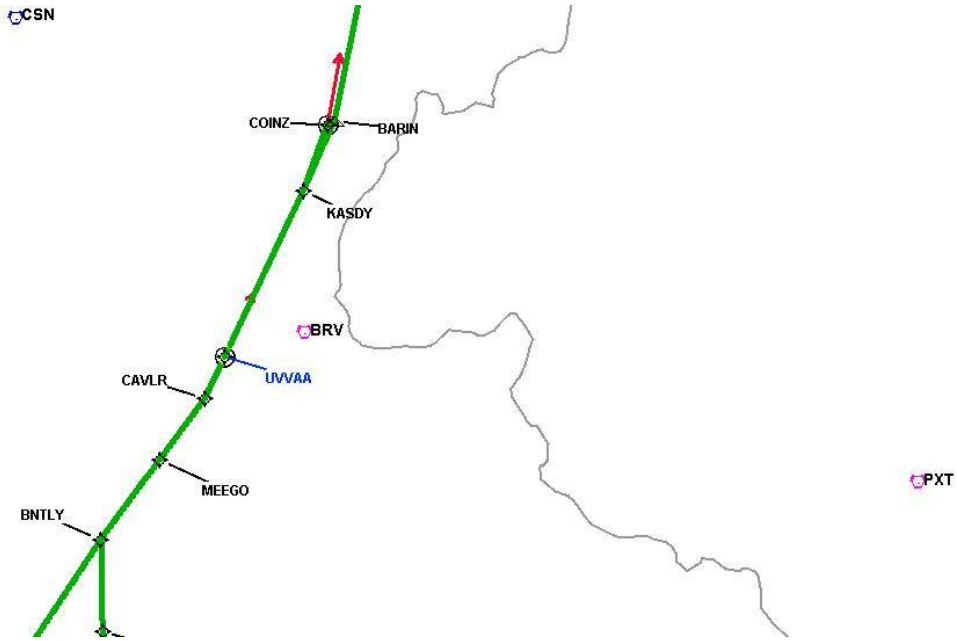
DME DME Assessment Results for CAVLR5 path CAVLR_UVVAA

Graphic Depiction 2



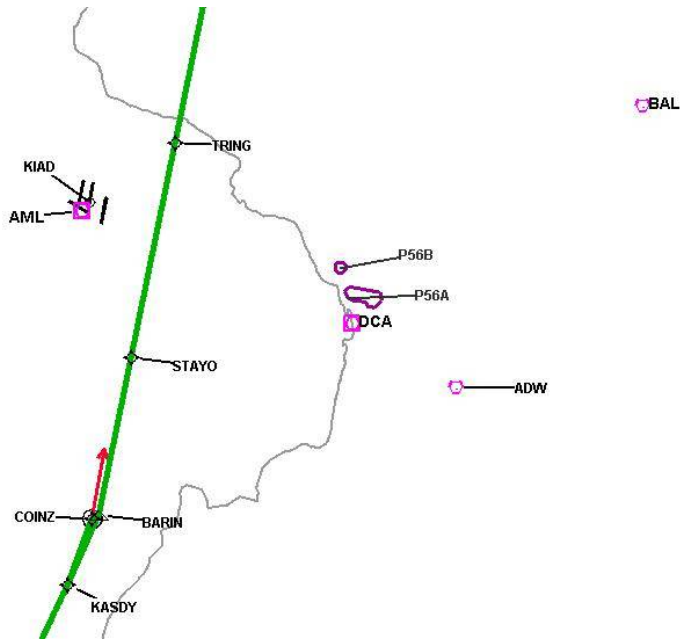
DME DME Assessment Results for CAVLR5 path CAVLR_UVVAA

Graphic Depiction 3



DME DME Assessment Results for CAVLR5 path CAVLR_UVVAA

Graphic Depiction 4

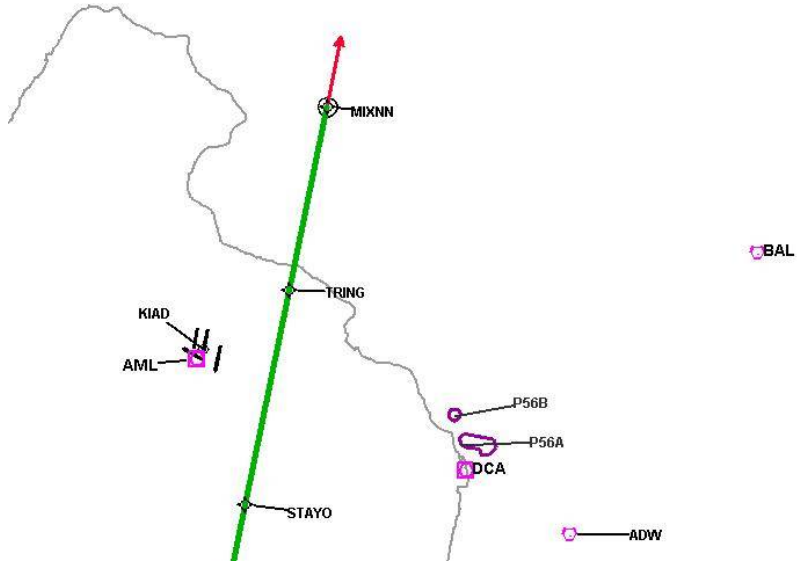


DME DME Assessment Results for CAVLR5 path CAVLR_UVVAA

Graphic Depiction 5

MRB

EMI



DME DME Assessment Results for CAVLR5 path DORRN_MIXNN

Results Summary

Flyability:	Completed
DME/DME:	Completed - No Critical DMEs
Name:	David C-CTR Cook
Project File:	C:\Users\David C-CTR Cook\Documents\TARGETS WORK\KIAD 3-21-2024\AMENDED FOR FIXES\CAVLR5\KIAD CAVLR STAR 20231207.tgs
Output File:	C:\Users\David C-CTR Cook\Documents\TARGETS WORK\KIAD 3-21-2024\AMENDED FOR FIXES\CAVLR5\KIAD [IFPA] CAVLR5 20231208_0941 EST\DORRN_MIXNN\KIAD CAVLR5 RNAV STAR DORRN MIXNN 20231208_0941 EST.pdf
Procedure Name:	CAVLR5
Software: DmeDmePlugin:	7.2.1
Date/Time:	12/08/2023 09:41 EST
Databases:	DTED0.MAX

Failures

No Failures

Warnings

No Warnings

Informational

No Informational

Notes For Flight Check

None

Flight Plan

Name	Type	Lat/Lon	Altitude (ft)	VNAV Mode	Ground Speed (kts)	Turn Type	Leg Type
DORRN	WP	N37° 31' 54.0400", W077° 53' 37.6200"	13000	VNAV	250	FLY_BY	TF
PERKN	WP	N37° 39' 11.9300", W077° 49' 28.8100"	13000	VNAV	250	FLY_BY	TF
KHOOD	WP	N37° 52' 55.2400", W077° 41' 51.5700"	13000	VNAV	250	FLY_BY	TF
BNTLY	WP	N38° 03' 14.9900", W077° 36' 05.1600"	13000	VNAV	250	FLY_BY	TF
MEEGO	WP	N38° 09' 30.8100", W077° 32' 06.5600"	11000	VNAV	250	FLY_BY	TF
CAVLR	WP	N38° 14' 21.1400", W077° 29' 00.9000"	10000	VNAV	250	FLY_BY	TF
KASDY	WP	N38° 29' 57.1700", W077° 23' 30.0100"	7000	VNAV	250	FLY_BY	TF
BARIN	WP	N38° 35' 10.9200", W077° 21' 50.0900"	6000	VNAV	250	FLY_BY	TF
STAYO	WP	N38° 46' 33.6000", W077° 21' 25.2000"	4000	VNAV	250	FLY_BY	TF
TRING	WP	N39° 02' 00.0000", W077° 20' 51.6000"	4000	VNAV	250	FLY_BY	TF
MIXNN	WP	N39° 15' 12.0000", W077° 20' 24.0000"	4000	VNAV	250	FLY_OVER	TF

DME DME Assessment Results for CAVLR5 path DORRN_MIXNN

Flyability	
Flight Type:	RNAV_STAR
Selected Airport:	KIAD [IFPA]
Climb Gradient:	None assigned
Speeds:	200 Ground Speed to 11000 FT
	240 Ground Speed to 18000 FT
	260 Ground Speed to 24000 FT
	340 Ground Speed above 24000 FT
Descent During a Turn:	Allowed
VNAV Mode:	Flight Plan

DME/DME	
RNP:	RNP 2
Flight Mode:	Manual
Line of Sight (DTED Level 0 Max):	Evaluated
Inertial Drift:	Enabled
Initial Drift:	0.558 NM
INS Drift Rate:	8.0 NM/Hour
Range Mode:	OSV
RNP Edges:	Evaluated
Min DME Range:	3.0 NM
DME Types:	DME, VOR-DME, VORTAC
DME Include Angles:	30 to 150
Critical DMEs:	Allowed
DoD Facilities:	Not included
Foreign Facilities:	Not included
High DMEs:	Included
Low DMEs:	Included
Terminal DMEs:	Included
Flight Check DMEs:	Not selected
Higher Altitudes:	Not Evaluated
Near Maximum Altitude:	Not Evaluated
Automatic ESVs:	Not enabled
Disabled DMEs:	FKN

DME DME Assessment Results for CAVLR5 path DORRN_MIXNN

DME/DME (Continued)										
DMEs Used										
#	Name	Lat/Lon	MAGVAR	Range	Type	Source	Critical	Status	Time	Distance
1	CCV	N37° 20' 51.1400", W075° 59' 51.5500"	10.0 W	40	L	IFPA	NO	Enabled	2.7 %	2.7 %
2	HPW	N37° 19' 43.9320", W077° 06' 57.3970"	6.0 W	40	L	IFPA	NO	Enabled	0.9 %	0.9 %
3	RIC	N37° 30' 08.4521", W077° 19' 12.9944"	9.0 W	130	H	IFPA	NO	Enabled	33.4 %	33.4 %
4	FAK	N37° 31' 42.6340", W077° 49' 41.5890"	6.0 W	130	H	IFPA	NO	Enabled	33.6 %	33.6 %
5	LVL	N36° 49' 04.9290", W077° 54' 10.6850"	8.0 W	40	L	IFPA	NO	Enabled	0.6 %	0.6 %
6	CSN	N38° 38' 28.3277", W077° 51' 55.7979"	6.0 W	130	H	IFPA	NO	Enabled	60.1 %	60.1 %
7	ADW	N38° 48' 25.9900", W076° 51' 58.5200"	10.0 W	40	L	IFPA	NO	Enabled	24.6 %	24.6 %
8	MRB	N39° 23' 08.0600", W077° 50' 54.0820"	7.0 W	40	L	IFPA	NO	Enabled	10.2 %	10.2 %
9	BAL	N39° 10' 15.8283", W076° 39' 40.5225"	11.0 W	40	L	IFPA	NO	Enabled	20.2 %	20.3 %
10	BRV	N38° 20' 10.5264", W077° 21' 10.3159"	9.0 W	40	L	IFPA	NO	Enabled	62.2 %	62.2 %
11	GVE	N38° 00' 48.9578", W078° 09' 10.8957"	6.0 W	130	H	IFPA	NO	Enabled	43.3 %	43.3 %
12	AML	N38° 56' 04.5329", W077° 28' 00.1263"	8.0 W	40	L	IFPA	NO	Enabled	49.3 %	49.3 %
13	DCA	N38° 51' 34.0300", W077° 02' 11.1700"	9.0 W	40	L	IFPA	NO	Enabled	53.3 %	53.4 %
14	EMI	N39° 29' 42.0266", W076° 58' 42.8591"	8.0 W	130	H	IFPA	NO	Enabled	17.9 %	17.9 %
15	FKN	N36° 42' 51.2443", W077° 00' 44.5488"	9.0 W	40	L	IFPA	NO	Disabled		

Flight Check DME Selection						
Distance [NM]	Selected DMEs					Alternate
0.0	LVL	RIC	GVE	CCV		
0.8	RIC	GVE	CCV			
3.0	RIC	GVE				
3.9	RIC	FAK	GVE	HPW		
4.6	RIC	FAK	GVE			
7.7	RIC	FAK	HPW	GVE		
8.1	RIC	FAK				
11.8	RIC	FAK	GVE			
15.3	BRV	RIC	GVE	FAK		
34.8	GVE	CSN	RIC	FAK	BRV	
36.2	GVE	CSN	FAK	BRV		
40.4	GVE	CSN	BRV			
49.5	BRV	CSN	GVE	DCA	AML	
49.8	BRV	CSN	GVE	AML		
50.7	GVE	CSN	DCA	BRV	AML	
50.8	DCA	CSN	BRV	AML		
51.0	DCA	CSN	AML			
61.3	DCA	CSN	AML	BRV		
81.6	BRV	ADW	DCA	AML	CSN	
86.3	BRV	DCA	ADW	BAL	CSN	
93.0	DCA	EMI	ADW	MRB	CSN	AML
98.9	ADW	EMI	DCA	CSN	AML	BAL
99.9	ADW	EMI	DCA	AML	BAL	

Inertial Drift Segments			
#	Start Location	End Location	Length [NM]

DME DME Assessment Results for CAVLR5 path DORRN_MIXNN

Available DMEs by Waypoints			
Waypoint Before	Waypoint After	DME List	Suggested DMEs
DORRN	PERKN	FAK, LVL, GVE, CCV, RIC, HPW	
PERKN	KHOOD	FAK, GVE, BRV, RIC, HPW	
KHOOD	BNTLY	FAK, BRV, GVE, RIC	
BNTLY	MEEGO	FAK, BRV, GVE, RIC, CSN	
MEEGO	CAVLR	BRV, GVE, CSN	
CAVLR	KASDY	AML, DCA, BRV, GVE, CSN	
KASDY	BARIN	AML, DCA, BRV, CSN	
BARIN	STAYO	AML, DCA, BRV, CSN	
STAYO	TRING	AML, EMI, DCA, ADW, BRV, MRB, BAL, CSN	
TRING	MIXNN	AML, EMI, DCA, ADW, MRB, BAL, CSN	

User Data Files

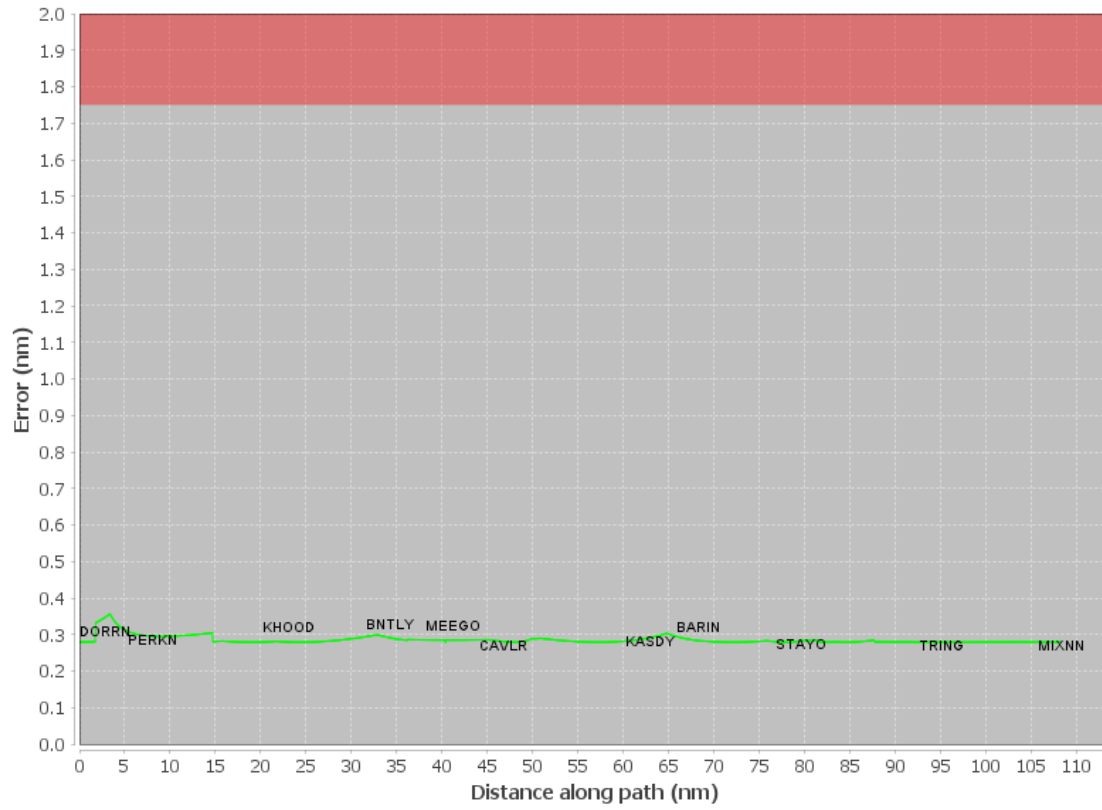
#	File Name
1	UserDMEsKIAD [IFPA] CAVLR5 RNAV STAR_20230601_1131 EDT.udt

User DMEs

#	Name	Lat/Lon	MAGVAR	Range	Elevation [ft]	Frequency	Replaces	Status
1	UDT ESV LVL LVL [IFPA]	N36° 49' 04.9290", W077° 54' 10.6850"	8.0 W	40	350	112.9	UDT ESV LVL	
	ESV:	Bearing [True]: 349.0° to 6.0° Bearing [Mag]: 357.0° to 14.0°				Arc Distance: Out to 56.0 NM Altitude: 3500.0 to 19000.0 ft		
2	UDT ESV CCV CCV [IFPA]	N37° 20' 51.1400", W075° 59' 51.5500"	10.0 W	40	9.7	112.2	UDT ESV CCV	
	ESV:	Bearing [True]: 260.0° to 280.0° Bearing [Mag]: 270.0° to 290.0°				Arc Distance: Out to 100.0 NM Altitude: 12000.0 to 16000.0 ft		
3	UDT ESV GVE GVE [IFPA]	N38° 00' 48.9578", W078° 09' 10.8957"	6.0 W	130	382.6	115.6	UDT ESV GVE	
	ESV:	Bearing [True]: 122.0° to 150.0° Bearing [Mag]: 128.0° to 156.0°				Arc Distance: Out to 51.0 NM Altitude: 4000.0 to 16000.0 ft		
4	UDT ESV GVE GVE [IFPA]	N38° 00' 48.9578", W078° 09' 10.8957"	6.0 W	130	382.6	115.6	UDT ESV GVE	
	ESV:	Bearing [True]: 122.0° to 150.0° Bearing [Mag]: 128.0° to 156.0°				Arc Distance: Out to 51.0 NM Altitude: 4000.0 to 16000.0 ft		
5	UDT ESV LVL LVL [IFPA]	N36° 49' 04.9290", W077° 54' 10.6850"	8.0 W	40	350	112.9	UDT ESV LVL	
	ESV:	Bearing [True]: 13.0° to 42.0° Bearing [Mag]: 21.0° to 50.0°				Arc Distance: Out to 65.0 NM Altitude: 10500.0 to 18000.0 ft		
6	UDT ESV LVL LVL [IFPA]	N36° 49' 04.9290", W077° 54' 10.6850"	8.0 W	40	350	112.9	UDT ESV LVL	
	ESV:	Bearing [True]: 349.0° to 6.0° Bearing [Mag]: 357.0° to 14.0°				Arc Distance: Out to 56.0 NM Altitude: 3500.0 to 19000.0 ft		
7	UDT ESV CCV CCV [IFPA]	N37° 20' 51.1400", W075° 59' 51.5500"	10.0 W	40	9.7	112.2	UDT ESV CCV	
	ESV:	Bearing [True]: 260.0° to 280.0° Bearing [Mag]: 270.0° to 290.0°				Arc Distance: Out to 100.0 NM Altitude: 12000.0 to 16000.0 ft		

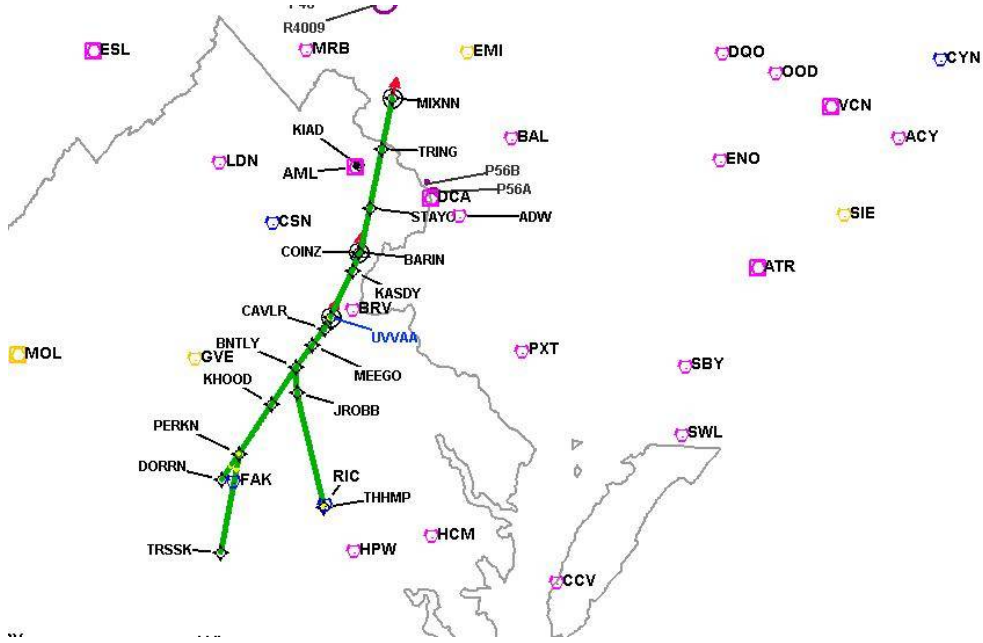
DME DME Assessment Results for CAVLR5 path DORRN_MIXNN

DME Error



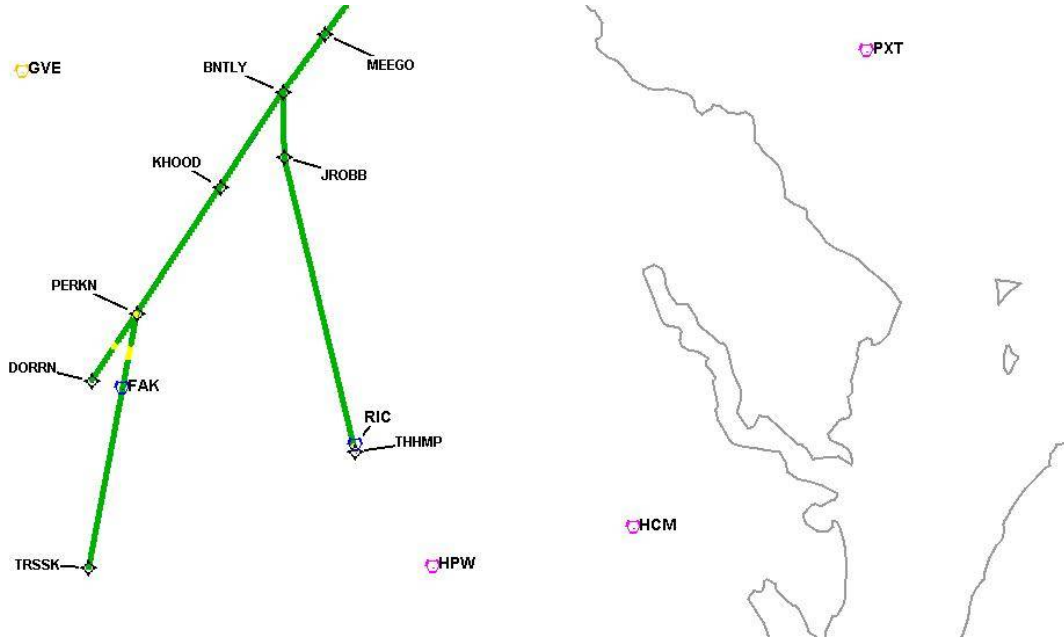
DME DME Assessment Results for CAVLR5 path DORRN_MIXNN

Graphic Depiction 1



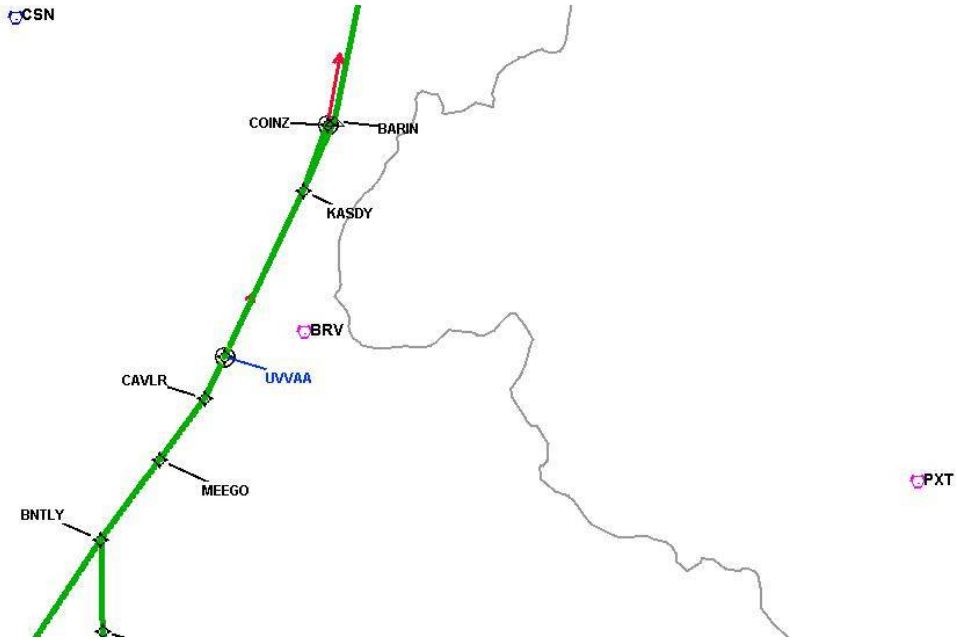
DME DME Assessment Results for CAVLR5 path DORRN_MIXNN

Graphic Depiction 2



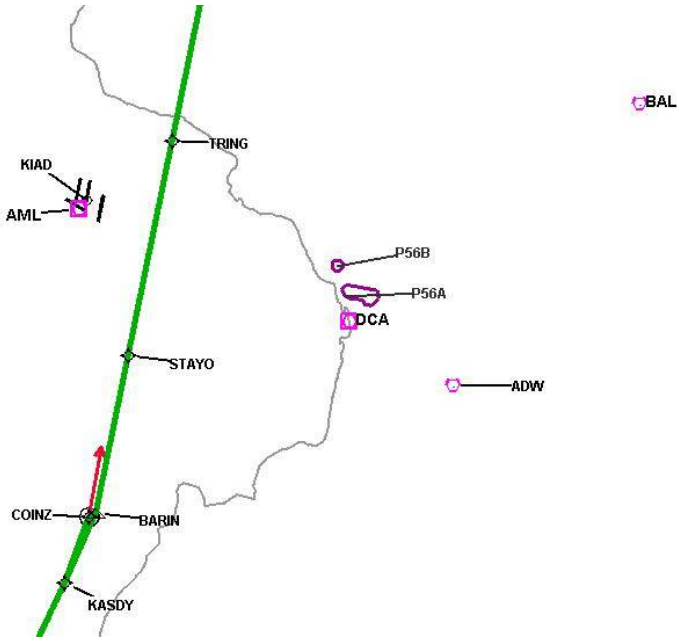
DME DME Assessment Results for CAVLR5 path DORRN_MIXNN

Graphic Depiction 3



DME DME Assessment Results for CAVLR5 path DORRN_MIXNN

Graphic Depiction 4

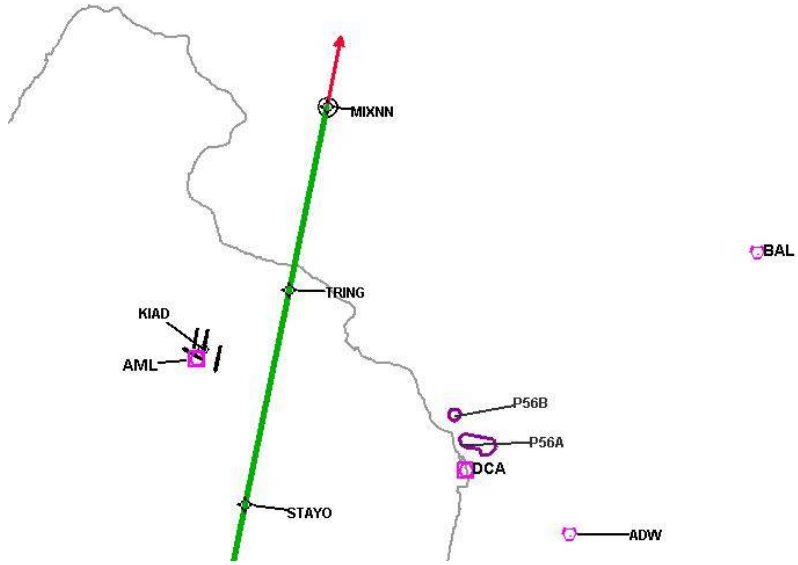


DME DME Assessment Results for CAVLR5 path DORRN_MIXNN

Graphic Depiction 5

MRB

EMI



DME DME Assessment Results for CAVLR5 path KASDY_COINZ

Results Summary	
Flyability:	Completed
DME/DME:	Completed - No Critical DMEs
Name:	David C-CTR Cook
Project File:	C:\Users\David C-CTR Cook\Documents\TARGETS WORK\KIAD 3-21-2024\AMENDED FOR FIXES\CAVLR5\KIAD CAVLR STAR 20231207.tgs
Output File:	C:\Users\David C-CTR Cook\Documents\TARGETS WORK\KIAD 3-21-2024\AMENDED FOR FIXES\CAVLR5\KIAD [IFPA] CAVLR5 20231208_0941 EST\KASDY_COINZ\KIAD CAVLR5 RNAV STAR KASDY COINZ 20231208_0941 EST.pdf
Procedure Name:	CAVLR5
Software: DmeDmePlugin:	7.2.1
Date/Time:	12/08/2023 09:41 EST
Databases:	DTED0.MAX

Failures
No Failures

Warnings
No Warnings

Informational
No Informational

Notes For Flight Check
None

Flight Plan							
Name	Type	Lat/Lon	Altitude (ft)	VNAV Mode	Ground Speed (kts)	Turn Type	Leg Type
KASDY	WP	N38° 29' 57.1700", W077° 23' 30.0100"	7000	VNAV	250	FLY_BY	TF
COINZ	WP	N38° 34' 52.9100", W077° 22' 23.5800"	6000	VNAV	210	FLY_OVER	TF

Flyability	
Flight Type:	RNAV_STAR
Selected Airport:	KIAD [IFPA]
Climb Gradient:	None assigned
Speeds:	200 Ground Speed to 11000 FT
	240 Ground Speed to 18000 FT
	260 Ground Speed to 24000 FT
	340 Ground Speed above 24000 FT
Descent During a Turn:	Allowed
VNAV Mode:	Flight Plan

DME DME Assessment Results for CAVLR5 path KASDY_COINZ

DME/DME	
RNP:	RNP 2
Flight Mode:	Manual
Line of Sight (DTED Level 0 Max):	Evaluated
Inertial Drift:	Enabled
Initial Drift:	0.558 NM
INS Drift Rate:	8.0 NM/Hour
Range Mode:	OSV
RNP Edges:	Evaluated
Min DME Range:	3.0 NM
DME Types:	DME, VOR-DME, VORTAC
DME Include Angles:	30 to 150
Critical DMEs:	Allowed
DoD Facilities:	Not included
Foreign Facilities:	Not included
High DMEs:	Included
Low DMEs:	Included
Terminal DMEs:	Included
Flight Check DMEs:	Not selected
Higher Altitudes:	Not Evaluated
Near Maximum Altitude:	Not Evaluated
Automatic ESVs:	Not enabled
Disabled DMEs:	FKN

DME/DME (Continued)										
DMEs Used										
#	Name	Lat/Lon	MAGVAR	Range	Type	Source	Critical	Status	Time	Distance
1	BRV	N38° 20' 10.5264", W077° 21' 10.3159"	9.0 W	40	L	IFPA	NO	Enabled	100 %	100 %
2	CSN	N38° 38' 28.3277", W077° 51' 55.7979"	6.0 W	130	H	IFPA	NO	Enabled	100 %	100 %
3	AML	N38° 56' 04.5329", W077° 28' 00.1263"	8.0 W	40	L	IFPA	NO	Enabled	100 %	100 %
4	DCA	N38° 51' 34.0300", W077° 02' 11.1700"	9.0 W	40	L	IFPA	NO	Enabled	100 %	100 %
5	FKN	N36° 42' 51.2443", W077° 00' 44.5488"	9.0 W	40	L	IFPA	NO	Disabled		

Flight Check DME Selection					
Distance [NM]	Selected DMEs				Alternate
0.0	DCA	CSN	AML	BRV	

Inertial Drift Segments			
#	Start Location	End Location	Length [NM]

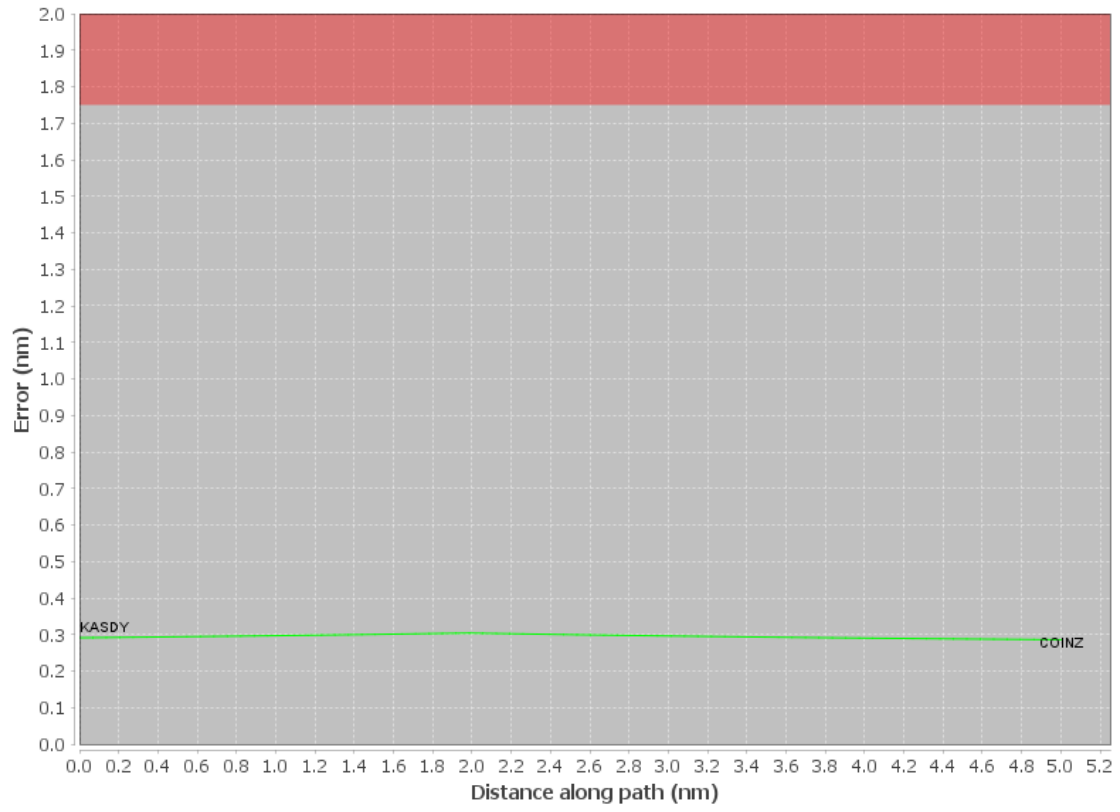
Available DMEs by Waypoints			
Waypoint Before	Waypoint After	DME List	Suggested DMEs
KASDY	COINZ	AML, DCA, BRV, CSN	

DME DME Assessment Results for CAVLR5 path KASDY_COINZ

User Data Files								
#	File Name							
1	UserDMESKIAD [IFPA] CAVLR5 RNAV STAR_20230601_1131 EDT.udt							
User DMEs								
#	Name	Lat/Lon	MAGVAR	Range	Elevation [ft]	Frequency	Replaces	Status
1	UDT ESV LVL LVL [IFPA]	N36° 49' 04.9290", W077° 54' 10.6850"	8.0 W	40	350	112.9	UDT ESV LVL	
	ESV:	Bearing [True]: 349.0° to 6.0° Bearing [Mag]: 357.0° to 14.0°				Arc Distance: Out to 56.0 NM Altitude: 3500.0 to 19000.0 ft		
2	UDT ESV CCV CCV [IFPA]	N37° 20' 51.1400", W075° 59' 51.5500"	10.0 W	40	9.7	112.2	UDT ESV CCV	
	ESV:	Bearing [True]: 260.0° to 280.0° Bearing [Mag]: 270.0° to 290.0°				Arc Distance: Out to 100.0 NM Altitude: 12000.0 to 16000.0 ft		
3	UDT ESV GVE GVE [IFPA]	N38° 00' 48.9578", W078° 09' 10.8957"	6.0 W	130	382.6	115.6	UDT ESV GVE	
	ESV:	Bearing [True]: 122.0° to 150.0° Bearing [Mag]: 128.0° to 156.0°				Arc Distance: Out to 51.0 NM Altitude: 4000.0 to 16000.0 ft		
4	UDT ESV GVE GVE [IFPA]	N38° 00' 48.9578", W078° 09' 10.8957"	6.0 W	130	382.6	115.6	UDT ESV GVE	
	ESV:	Bearing [True]: 122.0° to 150.0° Bearing [Mag]: 128.0° to 156.0°				Arc Distance: Out to 51.0 NM Altitude: 4000.0 to 16000.0 ft		
5	UDT ESV LVL LVL [IFPA]	N36° 49' 04.9290", W077° 54' 10.6850"	8.0 W	40	350	112.9	UDT ESV LVL	
	ESV:	Bearing [True]: 13.0° to 42.0° Bearing [Mag]: 21.0° to 50.0°				Arc Distance: Out to 65.0 NM Altitude: 10500.0 to 18000.0 ft		
6	UDT ESV LVL LVL [IFPA]	N36° 49' 04.9290", W077° 54' 10.6850"	8.0 W	40	350	112.9	UDT ESV LVL	
	ESV:	Bearing [True]: 349.0° to 6.0° Bearing [Mag]: 357.0° to 14.0°				Arc Distance: Out to 56.0 NM Altitude: 3500.0 to 19000.0 ft		
7	UDT ESV CCV CCV [IFPA]	N37° 20' 51.1400", W075° 59' 51.5500"	10.0 W	40	9.7	112.2	UDT ESV CCV	
	ESV:	Bearing [True]: 260.0° to 280.0° Bearing [Mag]: 270.0° to 290.0°				Arc Distance: Out to 100.0 NM Altitude: 12000.0 to 16000.0 ft		

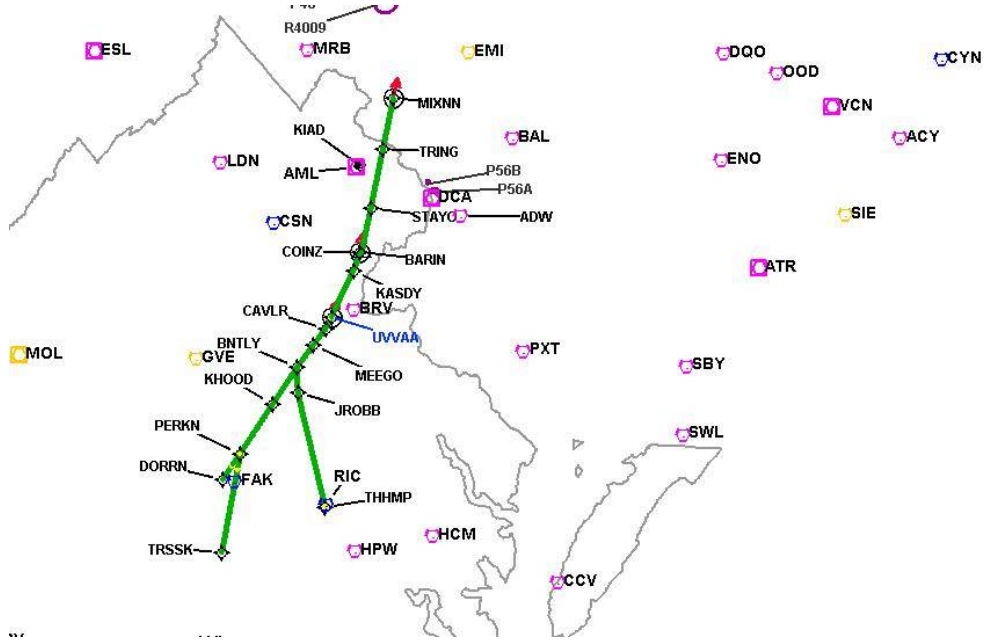
DME DME Assessment Results for CAVLR5 path KASDY_COINZ

DME Error



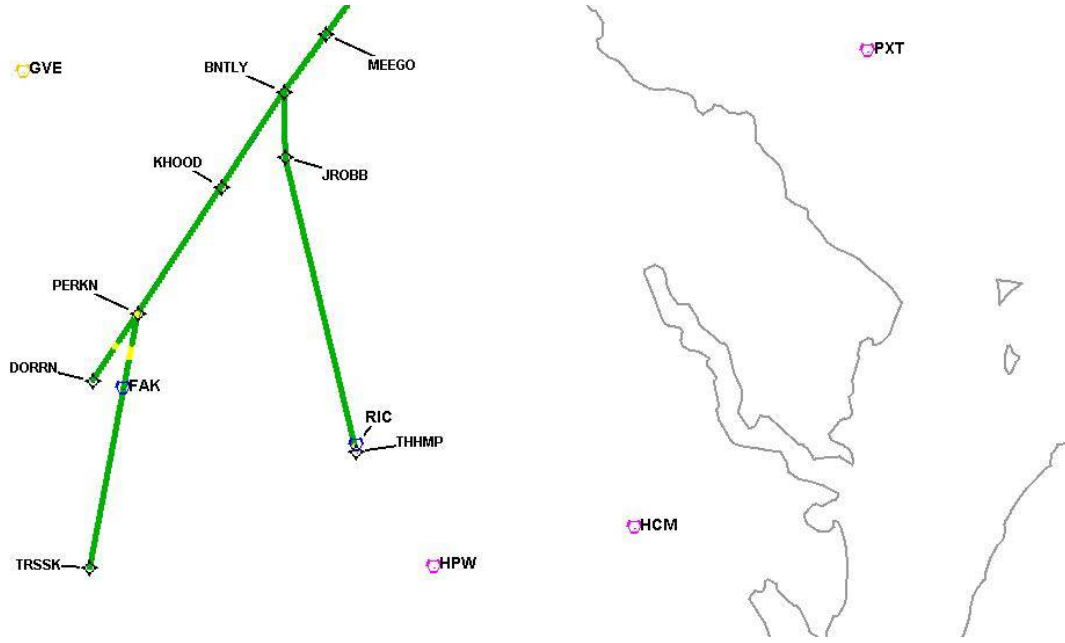
DME DME Assessment Results for CAVLR5 path KASDY_COINZ

Graphic Depiction 1



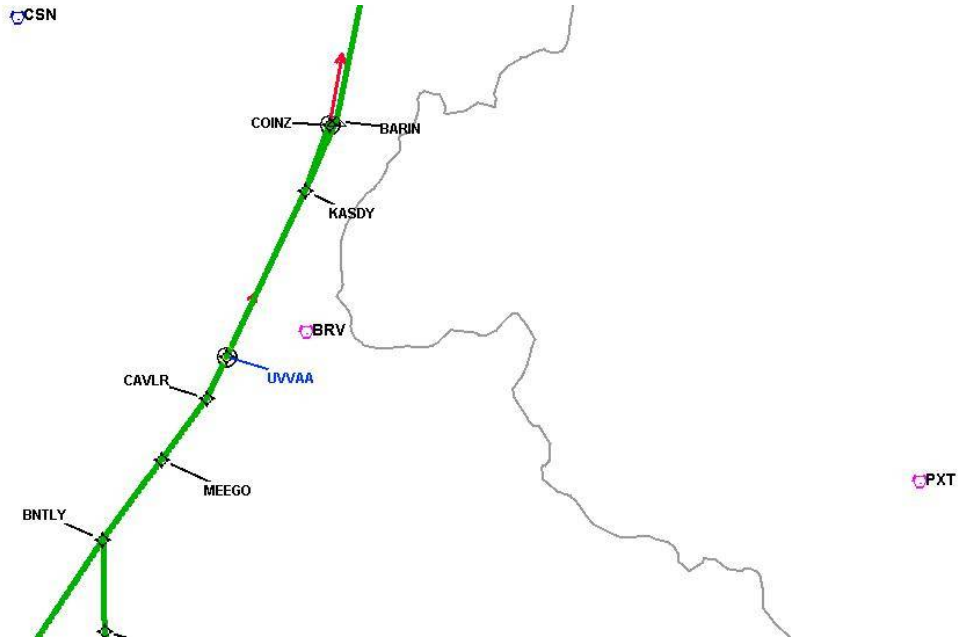
DME DME Assessment Results for CAVLR5 path KASDY_COINZ

Graphic Depiction 2



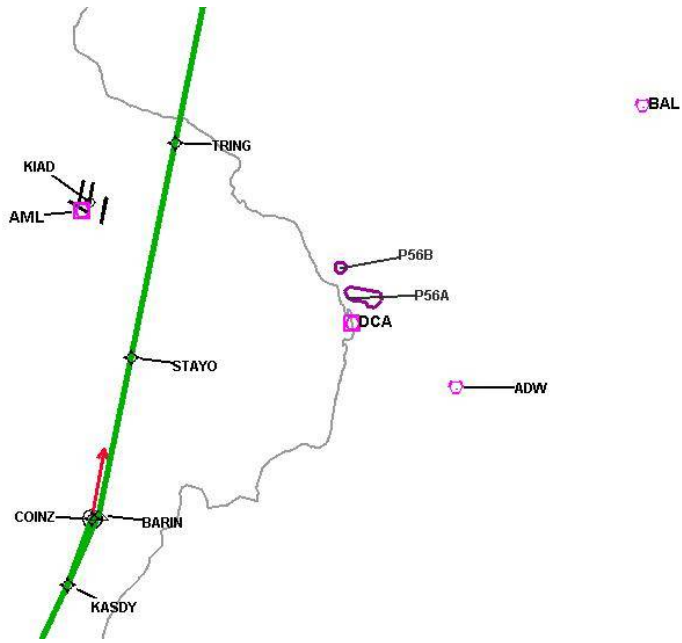
DME DME Assessment Results for CAVLR5 path KASDY_COINZ

Graphic Depiction 3



DME DME Assessment Results for CAVLR5 path KASDY_COINZ

Graphic Depiction 4

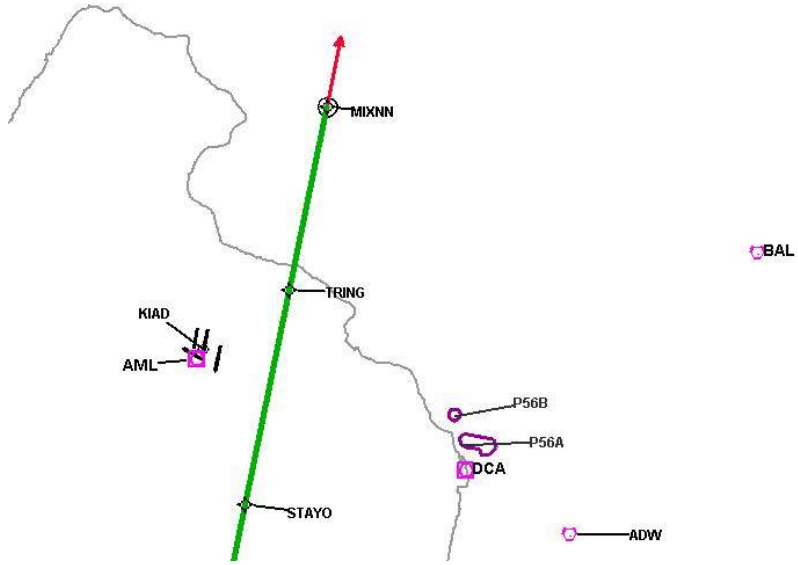


DME DME Assessment Results for CAVLR5 path KASDY_COINZ

Graphic Depiction 5

MRB

EMI



DME DME Assessment Results for CAVLR5 path THHMP_BNTLY

Results Summary

Flyability:	Completed
DME/DME:	Completed - No Critical DMEs
Name:	David C-CTR Cook
Project File:	C:\Users\David C-CTR Cook\Documents\TARGETS WORK\KIAD 3-21-2024\AMENDED FOR FIXES\CAVLR5\KIAD CAVLR STAR 20231207.tgs
Output File:	C:\Users\David C-CTR Cook\Documents\TARGETS WORK\KIAD 3-21-2024\AMENDED FOR FIXES\CAVLR5\KIAD [IFPA] CAVLR5 20231208_0941 EST\THHMP_BNTLY\KIAD CAVLR5 RNAV STAR THHMP BNTLY 20231208_0941 EST.pdf
Procedure Name:	CAVLR5
Software: DmeDmePlugin:	7.2.1
Date/Time:	12/08/2023 09:41 EST
Databases:	DTED0.MAX

Failures

No Failures

Warnings

No Warnings

Informational

No Informational

Notes For Flight Check

None

Flight Plan

Name	Type	Lat/Lon	Altitude (ft)	VNAV Mode	Ground Speed (kts)	Turn Type	Leg Type
THHMP	WP	N37° 29' 29.4700", W077° 19' 08.7500"	13000	VNAV	250	FLY_BY	TF
JROBB	WP	N37° 56' 52.7400", W077° 34' 30.9200"	13000	VNAV	250	FLY_BY	TF
BNTLY	WP	N38° 03' 14.9900", W077° 36' 05.1600"	13000	VNAV	250	FLY_BY	TF

Flyability

Flight Type:	RNAV_STAR
Selected Airport:	KIAD [IFPA]
Climb Gradient:	None assigned
Speeds:	200 Ground Speed to 11000 FT
	240 Ground Speed to 18000 FT
	260 Ground Speed to 24000 FT
	340 Ground Speed above 24000 FT
Descent During a Turn:	Allowed
VNAV Mode:	Flight Plan

DME DME Assessment Results for CAVLR5 path THHMP_BNTLY

DME/DME	
RNP:	RNP 2
Flight Mode:	Manual
Line of Sight (DTED Level 0 Max):	Evaluated
Inertial Drift:	Enabled
Initial Drift:	0.558 NM
INS Drift Rate:	8.0 NM/Hour
Range Mode:	OSV
RNP Edges:	Evaluated
Min DME Range:	3.0 NM
DME Types:	DME, VOR-DME, VORTAC
DME Include Angles:	30 to 150
Critical DMEs:	Allowed
DoD Facilities:	Not included
Foreign Facilities:	Not included
High DMEs:	Included
Low DMEs:	Included
Terminal DMEs:	Included
Flight Check DMEs:	Not selected
Higher Altitudes:	Not Evaluated
Near Maximum Altitude:	Not Evaluated
Automatic ESVs:	Not enabled
Disabled DMEs:	FKN

DME/DME (Continued)										
DMEs Used										
#	Name	Lat/Lon	MAGVAR	Range	Type	Source	Critical	Status	Time	Distance
1	CCV	N37° 20' 51.1400", W075° 59' 51.5500"	10.0 W	40	L	IFPA	NO	Enabled	1.7 %	1.7 %
2	HCM	N37° 26' 55.1756", W076° 42' 40.8741"	7.0 W	40	L	IFPA	NO	Enabled	35.8 %	35.8 %
3	HPW	N37° 19' 43.9320", W077° 06' 57.3970"	6.0 W	40	L	IFPA	NO	Enabled	71.7 %	71.7 %
4	RIC	N37° 30' 08.4521", W077° 19' 12.9944"	9.0 W	130	H	IFPA	NO	Enabled	84.6 %	84.6 %
5	FAK	N37° 31' 42.6340", W077° 49' 41.5890"	6.0 W	130	H	IFPA	NO	Enabled	100 %	100 %
6	LVL	N36° 49' 04.9290", W077° 54' 10.6850"	8.0 W	40	L	IFPA	NO	Enabled	35.8 %	35.8 %
7	BRV	N38° 20' 10.5264", W077° 21' 10.3159"	9.0 W	40	L	IFPA	NO	Enabled	60.6 %	60.6 %
8	GVE	N38° 00' 48.9578", W078° 09' 10.8957"	6.0 W	130	H	IFPA	NO	Enabled	63.8 %	63.8 %
9	CSN	N38° 38' 28.3277", W077° 51' 55.7979"	6.0 W	130	H	IFPA	NO	Enabled	5.1 %	5.1 %
10	FKN	N36° 42' 51.2443", W077° 00' 44.5488"	9.0 W	40	L	IFPA	NO	Disabled		

Flight Check DME Selection						
Distance [NM]	Selected DMEs					Alternate
0.0	GVE	LVL	HPW	CCV	FAK	HCM
0.7	LVL	HPW	HCM	FAK		
1.7	GVE	LVL	HPW	HCM	FAK	
3.5	LVL	HPW	HCM	FAK		
5.6	RIC	FAK	HPW	HCM		
8.0	LVL	HCM	RIC	FAK	HPW	
13.1	RIC	FAK	HPW	LVL		
14.4	HPW	FAK	RIC	LVL	BRV	
15.5	HPW	FAK	RIC	BRV	GVE	
26.2	BRV	GVE	FAK	RIC		
34.6	GVE	CSN	RIC	FAK	BRV	

DME DME Assessment Results for CAVLR5 path THHMP_BNTLY

Inertial Drift Segments			
#	Start Location	End Location	Length [NM]

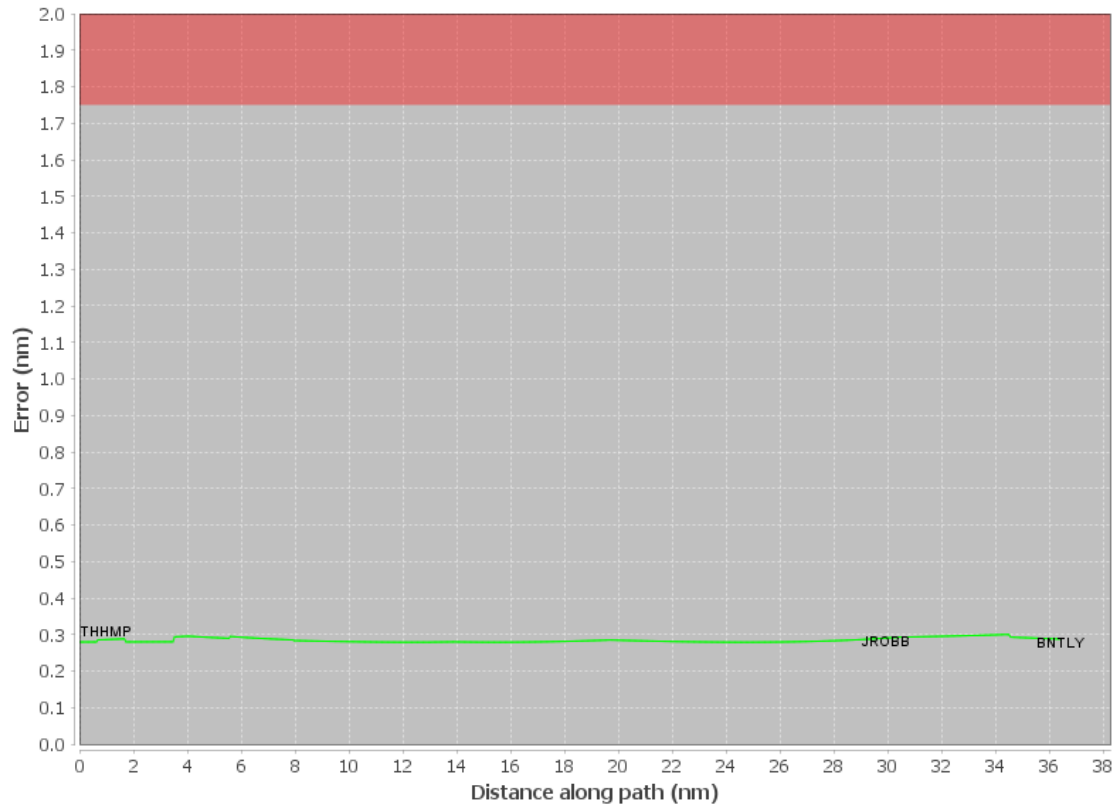
Available DMEs by Waypoints			
Waypoint Before	Waypoint After	DME List	Suggested DMEs
THHMP	JROBB	FAK, HCM, LVL, CCV, GVE, BRV, RIC, HPW	
JROBB	BNTLY	FAK, BRV, GVE, RIC, CSN	

User Data Files	
#	File Name
1	UserDMEsKIAD [IFPA] CAVLR5 RNAV STAR_20230601_1131 EDT.udt

User DMEs								
#	Name	Lat/Lon	MAGVAR	Range	Elevation [ft]	Frequency	Replaces	Status
1	UDT ESV LVL LVL [IFPA]	N36° 49' 04.9290", W077° 54' 10.6850"	8.0 W	40	350	112.9	UDT ESV LVL	
ESV:		Bearing [True]: 349.0° to 6.0° Bearing [Mag]: 357.0° to 14.0°				Arc Distance: Out to 56.0 NM Altitude: 3500.0 to 19000.0 ft		
2	UDT ESV CCV CCV [IFPA]	N37° 20' 51.1400", W075° 59' 51.5500"	10.0 W	40	9.7	112.2	UDT ESV CCV	
ESV:		Bearing [True]: 260.0° to 280.0° Bearing [Mag]: 270.0° to 290.0°				Arc Distance: Out to 100.0 NM Altitude: 12000.0 to 16000.0 ft		
3	UDT ESV GVE GVE [IFPA]	N38° 00' 48.9578", W078° 09' 10.8957"	6.0 W	130	382.6	115.6	UDT ESV GVE	
ESV:		Bearing [True]: 122.0° to 150.0° Bearing [Mag]: 128.0° to 156.0°				Arc Distance: Out to 51.0 NM Altitude: 4000.0 to 16000.0 ft		
4	UDT ESV GVE GVE [IFPA]	N38° 00' 48.9578", W078° 09' 10.8957"	6.0 W	130	382.6	115.6	UDT ESV GVE	
ESV:		Bearing [True]: 122.0° to 150.0° Bearing [Mag]: 128.0° to 156.0°				Arc Distance: Out to 51.0 NM Altitude: 4000.0 to 16000.0 ft		
5	UDT ESV LVL LVL [IFPA]	N36° 49' 04.9290", W077° 54' 10.6850"	8.0 W	40	350	112.9	UDT ESV LVL	
ESV:		Bearing [True]: 13.0° to 42.0° Bearing [Mag]: 21.0° to 50.0°				Arc Distance: Out to 65.0 NM Altitude: 10500.0 to 18000.0 ft		
6	UDT ESV LVL LVL [IFPA]	N36° 49' 04.9290", W077° 54' 10.6850"	8.0 W	40	350	112.9	UDT ESV LVL	
ESV:		Bearing [True]: 349.0° to 6.0° Bearing [Mag]: 357.0° to 14.0°				Arc Distance: Out to 56.0 NM Altitude: 3500.0 to 19000.0 ft		
7	UDT ESV CCV CCV [IFPA]	N37° 20' 51.1400", W075° 59' 51.5500"	10.0 W	40	9.7	112.2	UDT ESV CCV	
ESV:		Bearing [True]: 260.0° to 280.0° Bearing [Mag]: 270.0° to 290.0°				Arc Distance: Out to 100.0 NM Altitude: 12000.0 to 16000.0 ft		

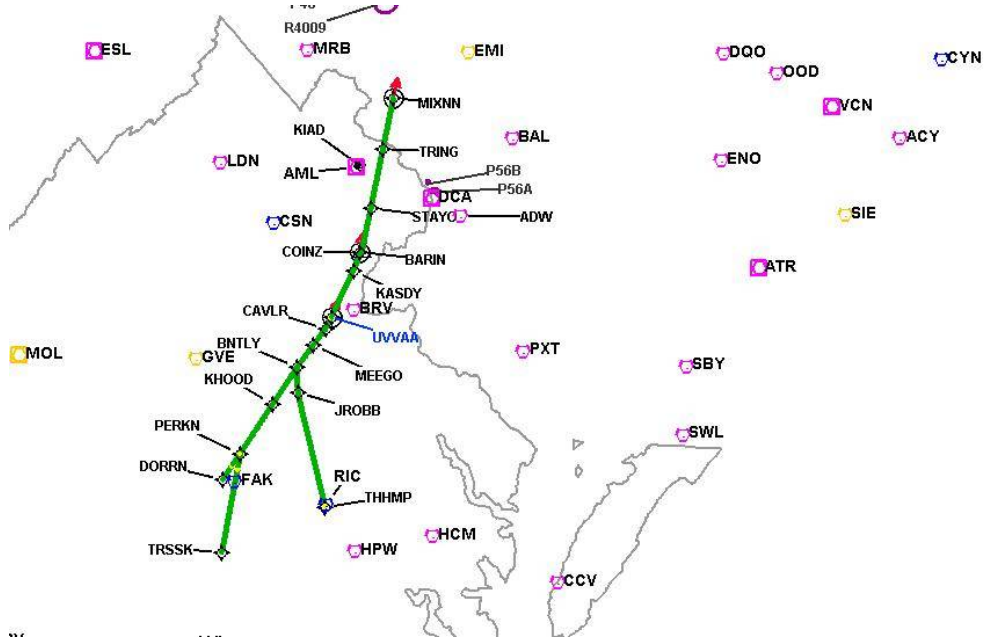
DME DME Assessment Results for CAVLR5 path THHMP_BNTLY

DME Error



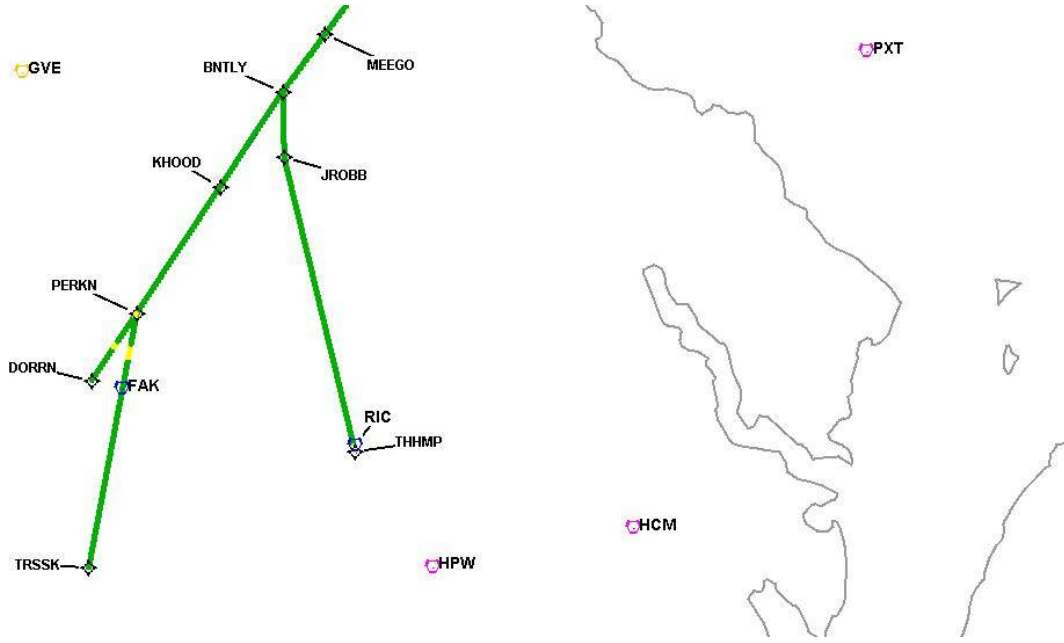
DME DME Assessment Results for CAVLR5 path THHMP_BNTLY

Graphic Depiction 1



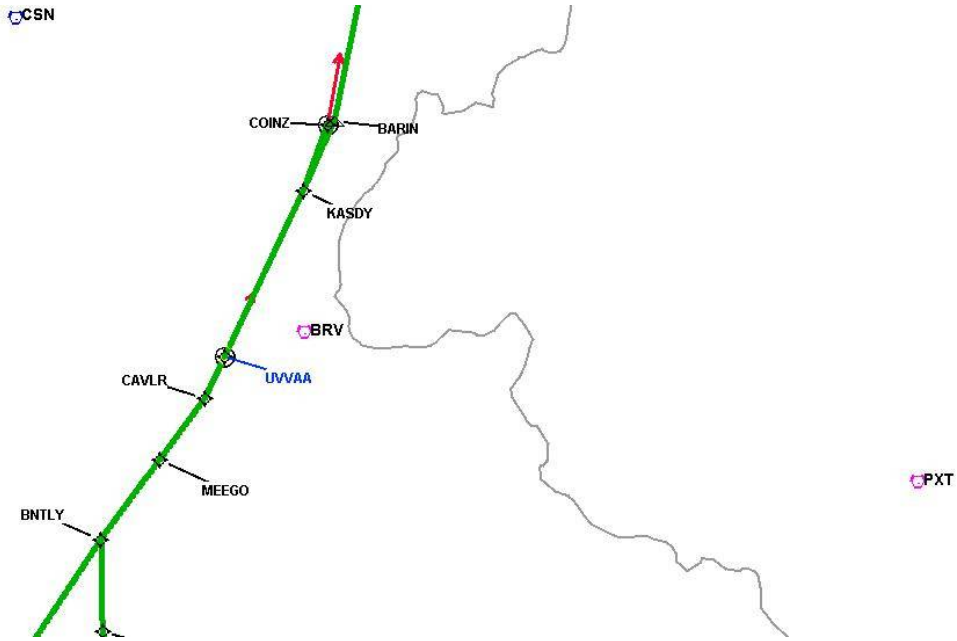
DME DME Assessment Results for CAVLR5 path THHMP_BNTLY

Graphic Depiction 2



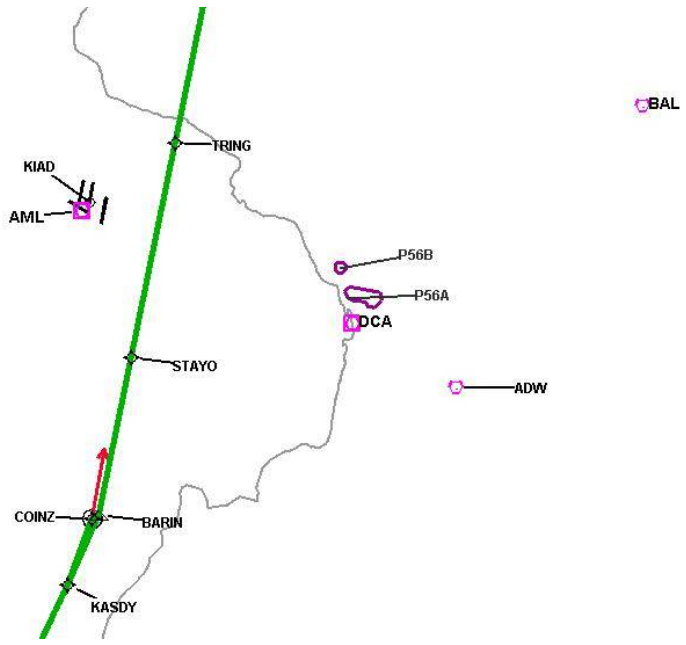
DME DME Assessment Results for CAVLR5 path THHMP_BNTLY

Graphic Depiction 3



DME DME Assessment Results for CAVLR5 path THHMP_BNTLY

Graphic Depiction 4

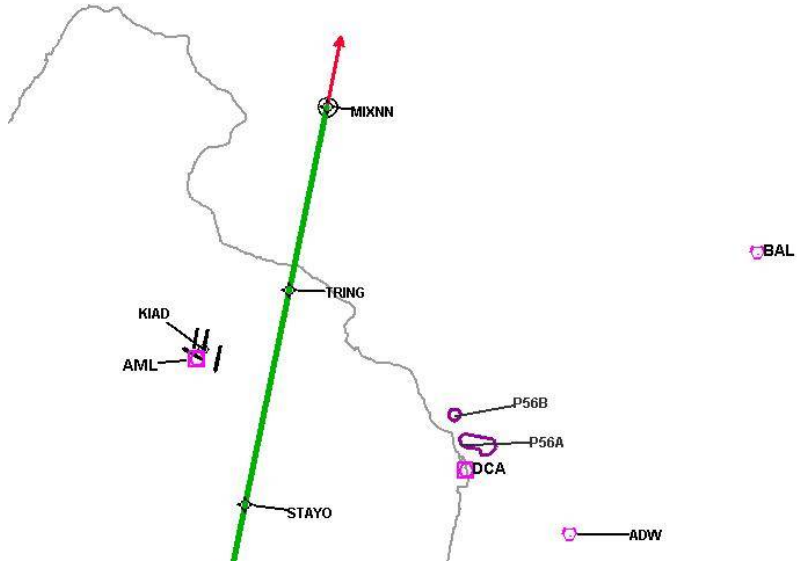


DME DME Assessment Results for CAVLR5 path THHMP_BNTLY

Graphic Depiction 5

MRB

EMI



DME DME Assessment Results for CAVLR5 path TRSSK_PERKN

Results Summary

Flyability:	Completed
DME/DME:	Completed - No Critical DMEs
Name:	David C-CTR Cook
Project File:	C:\Users\David C-CTR Cook\Documents\TARGETS WORK\KIAD 3-21-2024\AMENDED FOR FIXES\CAVLR5\KIAD CAVLR STAR 20231207.tgs
Output File:	C:\Users\David C-CTR Cook\Documents\TARGETS WORK\KIAD 3-21-2024\AMENDED FOR FIXES\CAVLR5\KIAD [IFPA] CAVLR5 20231208_0941 EST\TRSSK_PERKN\KIAD CAVLR5 RNAV STAR TRSSK PERKN 20231208_0941 EST.pdf
Procedure Name:	CAVLR5
Software: DmeDmePlugin:	7.2.1
Date/Time:	12/08/2023 09:41 EST
Databases:	DTED0.MAX

Failures

No Failures

Warnings

No Warnings

Informational

No Informational

Notes For Flight Check

None

Flight Plan

Name	Type	Lat/Lon	Altitude (ft)	VNAV Mode	Ground Speed (kts)	Turn Type	Leg Type
TRSSK	WP	N37° 13' 38.4100", W077° 49' 52.2500"	13000	VNAV	250	FLY_BY	TF
PERKN	WP	N37° 39' 11.9300", W077° 49' 28.8100"	13000	VNAV	250	FLY_BY	TF

Flyability

Flight Type:	RNAV_STAR
Selected Airport:	KIAD [IFPA]
Climb Gradient:	None assigned
Speeds:	200 Ground Speed to 11000 FT
	240 Ground Speed to 18000 FT
	260 Ground Speed to 24000 FT
	340 Ground Speed above 24000 FT
Descent During a Turn:	Allowed
VNAV Mode:	Flight Plan

DME DME Assessment Results for CAVLR5 path TRSSK_PERKN

DME/DME	
RNP:	RNP 2
Flight Mode:	Manual
Line of Sight (DTED Level 0 Max):	Evaluated
Inertial Drift:	Enabled
Initial Drift:	0.558 NM
INS Drift Rate:	8.0 NM/Hour
Range Mode:	OSV
RNP Edges:	Evaluated
Min DME Range:	3.0 NM
DME Types:	DME, VOR-DME, VORTAC
DME Include Angles:	30 to 150
Critical DMEs:	Allowed
DoD Facilities:	Not included
Foreign Facilities:	Not included
High DMEs:	Included
Low DMEs:	Included
Terminal DMEs:	Included
Flight Check DMEs:	Not selected
Higher Altitudes:	Not Evaluated
Near Maximum Altitude:	Not Evaluated
Automatic ESVs:	Not enabled
Disabled DMEs:	FKN

DME/DME (Continued)										
DMEs Used										
#	Name	Lat/Lon	MAGVAR	Range	Type	Source	Critical	Status	Time	Distance
1	CCV	N37° 20' 51.1400", W075° 59' 51.5500"	10.0 W	40	L	IFPA	NO	Enabled	23.4 %	23.4 %
2	HPW	N37° 19' 43.9320", W077° 06' 57.3970"	6.0 W	40	L	IFPA	NO	Enabled	78.8 %	78.8 %
3	RIC	N37° 30' 08.4521", W077° 19' 12.9944"	9.0 W	130	H	IFPA	NO	Enabled	100 %	100 %
4	FAK	N37° 31' 42.6340", W077° 49' 41.5890"	6.0 W	130	H	IFPA	NO	Enabled	76.1 %	76.1 %
5	LVL	N36° 49' 04.9290", W077° 54' 10.6850"	8.0 W	40	L	IFPA	NO	Enabled	57.6 %	57.6 %
6	GVE	N38° 00' 48.9578", W078° 09' 10.8957"	6.0 W	130	H	IFPA	NO	Enabled	45.1 %	45.1 %
7	FKN	N36° 42' 51.2443", W077° 00' 44.5488"	9.0 W	40	L	IFPA	NO	Disabled		

Flight Check DME Selection						
Distance [NM]	Selected DMEs					Alternate
0.0	HPW	FAK	LVL	RIC		
12.3	HPW	LVL	RIC	FAK	GVE	
14.8	RIC	FAK	GVE	HPW		
15.1	RIC	GVE	CCV	HPW		
19.0	RIC	GVE	CCV			
21.1	RIC	FAK	HPW	GVE		
22.3	RIC	FAK	GVE			
23.9	RIC	FAK				

Inertial Drift Segments			
#	Start Location	End Location	Length [NM]

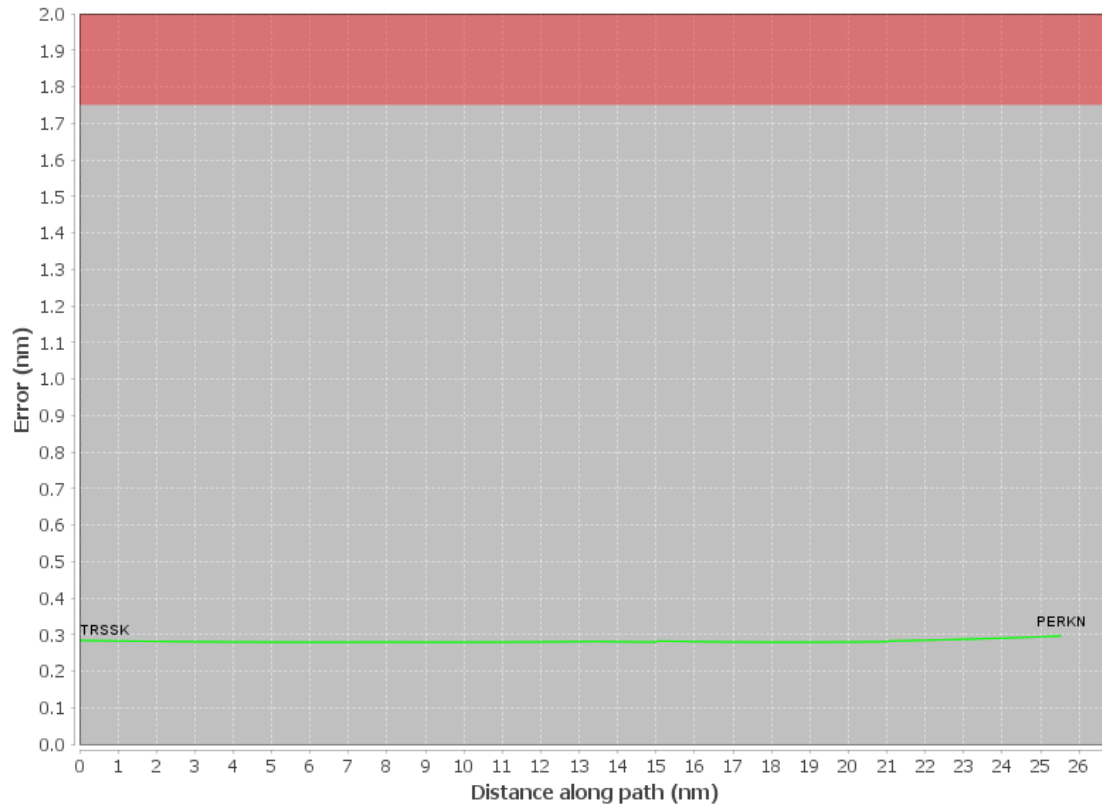
Available DMEs by Waypoints			
Waypoint Before	Waypoint After	DME List	Suggested DMEs
TRSSK	PERKN	FAK, LVL, GVE, CCV, RIC, HPW	

DME DME Assessment Results for CAVLR5 path TRSSK_PERKN

User Data Files								
#	File Name							
1	UserDMESKIAD [IFPA] CAVLR5 RNAV STAR_20230601_1131 EDT.udt							
User DMEs								
#	Name	Lat/Lon	MAGVAR	Range	Elevation [ft]	Frequency	Replaces	Status
1	UDT ESV LVL LVL [IFPA]	N36° 49' 04.9290", W077° 54' 10.6850"	8.0 W	40	350	112.9	UDT ESV LVL	
	ESV:	Bearing [True]: 349.0° to 6.0° Bearing [Mag]: 357.0° to 14.0°				Arc Distance: Out to 56.0 NM Altitude: 3500.0 to 19000.0 ft		
2	UDT ESV CCV CCV [IFPA]	N37° 20' 51.1400", W075° 59' 51.5500"	10.0 W	40	9.7	112.2	UDT ESV CCV	
	ESV:	Bearing [True]: 260.0° to 280.0° Bearing [Mag]: 270.0° to 290.0°				Arc Distance: Out to 100.0 NM Altitude: 12000.0 to 16000.0 ft		
3	UDT ESV GVE GVE [IFPA]	N38° 00' 48.9578", W078° 09' 10.8957"	6.0 W	130	382.6	115.6	UDT ESV GVE	
	ESV:	Bearing [True]: 122.0° to 150.0° Bearing [Mag]: 128.0° to 156.0°				Arc Distance: Out to 51.0 NM Altitude: 4000.0 to 16000.0 ft		
4	UDT ESV GVE GVE [IFPA]	N38° 00' 48.9578", W078° 09' 10.8957"	6.0 W	130	382.6	115.6	UDT ESV GVE	
	ESV:	Bearing [True]: 122.0° to 150.0° Bearing [Mag]: 128.0° to 156.0°				Arc Distance: Out to 51.0 NM Altitude: 4000.0 to 16000.0 ft		
5	UDT ESV LVL LVL [IFPA]	N36° 49' 04.9290", W077° 54' 10.6850"	8.0 W	40	350	112.9	UDT ESV LVL	
	ESV:	Bearing [True]: 13.0° to 42.0° Bearing [Mag]: 21.0° to 50.0°				Arc Distance: Out to 65.0 NM Altitude: 10500.0 to 18000.0 ft		
6	UDT ESV LVL LVL [IFPA]	N36° 49' 04.9290", W077° 54' 10.6850"	8.0 W	40	350	112.9	UDT ESV LVL	
	ESV:	Bearing [True]: 349.0° to 6.0° Bearing [Mag]: 357.0° to 14.0°				Arc Distance: Out to 56.0 NM Altitude: 3500.0 to 19000.0 ft		
7	UDT ESV CCV CCV [IFPA]	N37° 20' 51.1400", W075° 59' 51.5500"	10.0 W	40	9.7	112.2	UDT ESV CCV	
	ESV:	Bearing [True]: 260.0° to 280.0° Bearing [Mag]: 270.0° to 290.0°				Arc Distance: Out to 100.0 NM Altitude: 12000.0 to 16000.0 ft		

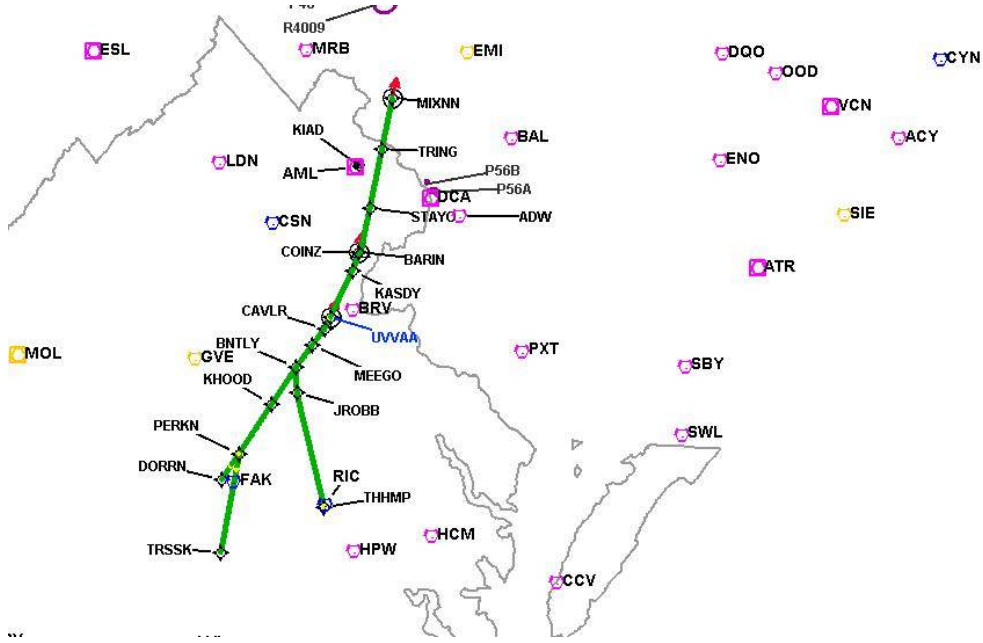
DME DME Assessment Results for CAVLR5 path TRSSK_PERKN

DME Error



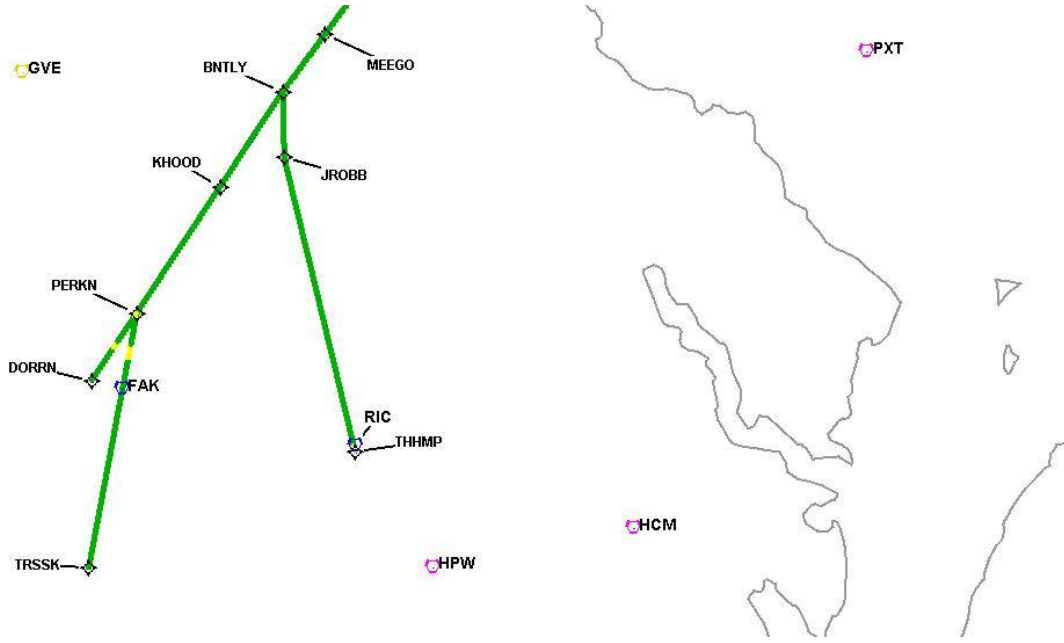
DME DME Assessment Results for CAVLR5 path TRSSK_PERKN

Graphic Depiction 1



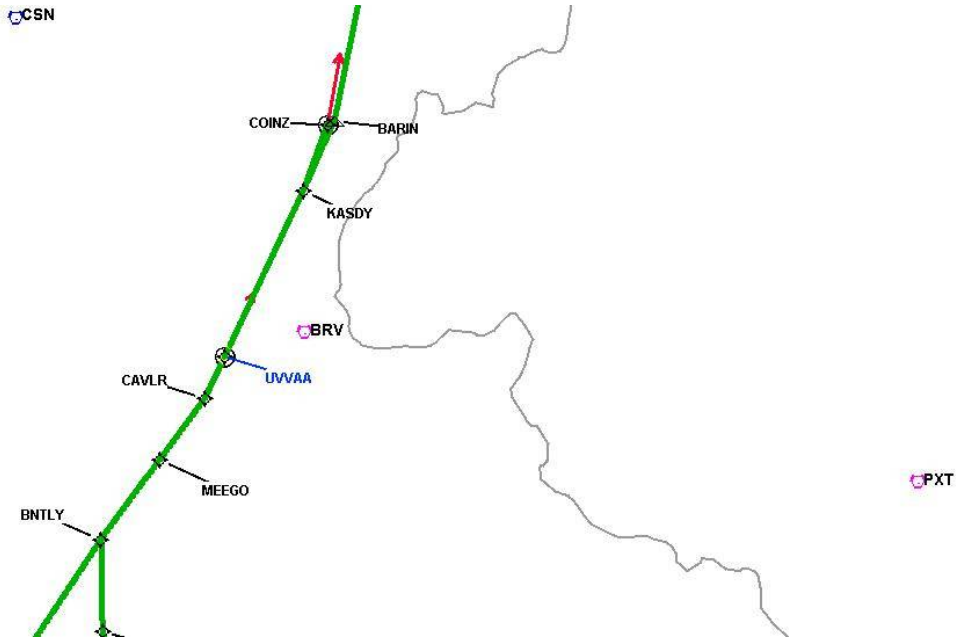
DME DME Assessment Results for CAVLR5 path TRSSK_PERKN

Graphic Depiction 2



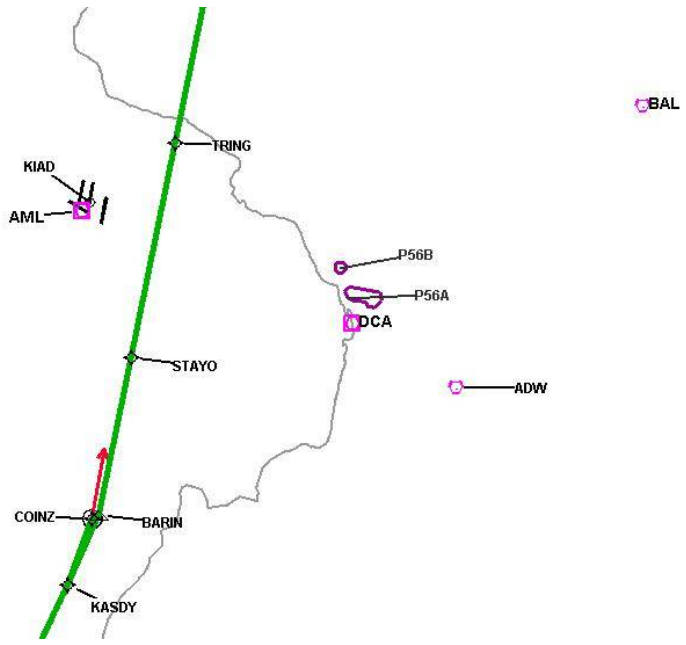
DME DME Assessment Results for CAVLR5 path TRSSK_PERKN

Graphic Depiction 3



DME DME Assessment Results for CAVLR5 path TRSSK_PERKN

Graphic Depiction 4



DME DME Assessment Results for CAVLR5 path TRSSK_PERKN

Graphic Depiction 5

MRB

EMI

