

Flight Procedures Cover Page	Task Action: FLIGHT CHECK	Task Type: IAP	Estimated Chart Date: 06/12/2025	APWS Task ID: 2DB8103F70354540B816E6B2E68B70A8	APWS Project ID: AD758C9F4AA642F58A6F397C0369D514
Procedure: ILS OR LOC RWY 18R AMDT 2		Enroute: NO	Specialist: Gonzales, Emmanuel		Agreement Number:
Airport ID: KCVG			Airport City: COVINGTON		State: KY
Facility ID: CJN	Facility Type: ILS	Flight Inspection Remark Type: Hold FC Slot			

**Procedure Comments:**

ACTIVE DATA USED FOR KCVG AND ACTIVE DATA USED FOR RWY 18R AND I-CJN.

ADDED NEW INITIAL SEGMENTS AS PART OF AIRSPACE MODERNIZATION PROJECT.

ADDED STEP DOWN FIXES TO INITIAL SEGMENT AS PART OF AIRSPACE MODERNIZATION PROJECT.

ESV (4): COVINGTON/CINCINNATI (CJN) ILS (4).

CONTACT: ERIC N. SUSKI, 405.954.7331.

QUALITY  
9  
CHECKED  
BEGUE

QUALITY  
25  
CHECKED

## FIPC BASIC FORM

<b>PROCEDURE:</b> ILS OR LOC RWY 18R AMDT 2		<b>AIRPORT NAME:</b> CINCINNATI/NORTHERN KENTUCKY		<b>AIRPORT ID:</b> KCVG	<b>SPECIAL CONTROL NO:</b> AP-01-236-25
<b>FAC ID:</b> CJN		<b>CITY:</b> COVINGTON		<b>ST:</b> KY	<b>ORIG CHART DATE:</b> 06/12/2025
<b>DFL TYPE:</b> PROC/AR	<b>THIRD PARTY:</b> <input type="checkbox"/> YES	<b>EST. TIME ON SITE:</b> 0.5	<b>REIMB. NUMBER:</b>	<b>PTS TASK ID:</b> 2DB8103F70354540B816E6B2E68B70A8	

### PREFLIGHT NOTES

<b>REVIEWER:</b>	<b>DATE:</b>
<b>COMMENTS:</b>	<b>CHECK ONE:</b> <input type="checkbox"/> FLT CK REQ <input type="checkbox"/> NFCR <input type="checkbox"/> REJECT
	<b>YES</b> <b>NO</b>
	<b>CPV COMPLETE?</b> <input checked="" type="checkbox"/> X <input type="checkbox"/>

### PROCEDURE RESULTS

<b>INSPECTION DATE:</b> 02/25/2025	<b>CREW #:</b> VN526	<b>N #:</b> N73	<b>INSTRUMENT PROCEDURE STATUS:</b> <input checked="" type="checkbox"/> SAT <input type="checkbox"/> SAT W/CHANGES <input type="checkbox"/> UNSAT	<b>ARINC CODING:</b> <input checked="" type="checkbox"/> SAT <input type="checkbox"/> SAT/GOLD <input type="checkbox"/> UNSAT
<b>FLIGHT INSPECTOR SIGNATURE:</b> eric l geyer @ 02/25/2025 11:16		<b>PRINTED NAME:</b> GEYER, ERIC LEE		<b>NOTAM INITIATED?</b> <input type="checkbox"/> YES <input checked="" type="checkbox"/> NO

**FLIGHT INSPECTOR REMARKS:**  
Cincinnati/Northern Kentucky INTL, Covington, KY, ILS OR LOC RWY 18R AMDT 2. SAT. Modernization project with multiple new feeder legs.

### IN-FLIGHT OBSTACLE REPORT

<b>OBSTRUCTION ID #:</b>	<b>COORDINATES OR LOCATION:</b>	<b>GNSS ALTITUDE (MSL):</b>	<b>BAROMETRIC ALTITUDE (MSL):</b>	<b>HEIGHT ABOVE GROUND LEVEL:</b>
--------------------------	---------------------------------	-----------------------------	-----------------------------------	-----------------------------------



# Federal Aviation Administration

---

---

## Memorandum

Date:

To: Instrument Flight Procedures Service Providers

From: Eric S. Parker, Acting Manager, Flight Technologies and Procedures  
Division

Subject: Waiver to Order 8260.58, United States Standard for Performance Based  
Navigation (PBN) Instrument Procedure Design, on Appendix C PBN  
Transition to ILS/GLS/LPV Final.

---

---

This memorandum waives FAA Order 8260.58, United States Standard for Performance Based Navigation (PBN) Instrument Procedure Design, Appendix C, paragraph 2.a.(1), for procedures that meet all of the following guidelines:

1. The final approach segment length is no longer than 37,400 feet.
2. The glidepath angle is 3.00 degrees or more.
3. The Threshold Crossing Height is between 40 feet and 60 feet.
4. No PBN segment/s intersect the final approach course extended closer than 12,300 feet plus Distance to Turn Anticipation (DTA) from the PFAF.

This memorandum remains in effect until rescinded. Please direct all inquiries to the Flight Procedures and Airspace Group, Standards Section at 405-954-1139 or 9-AWA-AVS-AFS420@faa.gov.

**ESV Details**

Originating Office :AJV-A431		Airspace Docket Number :		Request Type :Establish		
<b>Facility Data</b>						
Chart Name:WALBY, ILS OR LOC RWY 18R		City:COVINGTON		Ident:CJN		State:KY
Type/Class: LOC		Frequency: M110.75		Reference Number: 24106952		
<b>Extended Service Volume Data: (Requesting Officer)</b>						
ESV ID	Radial 1	Radial 2	Distance	Minimum Altitude	Maximum Altitude	
FAA 031935 - 001	6		21	53	70	
Requirement: WALBY ILS OR LOC RWY 18R						
Signature:GONZALES EMMANUEL		Routing Symbol:			Date:10/29/2024	
<b>Extended Service Volume Data: (FMO)</b>						
ESV ID	Radial 1	Radial 2	Distance	Minimum Altitude	Maximum Altitude	Action Type
FAA 031935 - 001	6		21	53	70	APPROVE
Requirement/Remarks: WALBY ILS OR LOC RWY 18R APPROVED. FREQ. PROTECTION & FIELD STRENGTH. PENDING FLIGHT INSPECT @ REQUIRED. DIST. & MIN ALT..						
Signature:Hughes Dennis		Routing Symbol:			Date:10/30/2024	
<b>Extended Service Volume Data: (Super FMO)</b>						
ESV ID	Radial 1	Radial 2	Distance	Minimum Altitude	Maximum Altitude	Action Type
FAA 031935 - 001	6		21	53	70	APPROVE
Requirement/Remarks: WALBY ILS OR LOC RWY 18R APPROVED. FREQ. PROTECTION & FIELD STRENGTH. PENDING FLIGHT INSPECT @ REQUIRED. DIST. & MIN ALT..						
Signature:Hughes Dennis		Routing Symbol:			Date:10/30/2024	
<b>Extended Service Volume Data: (FIFO)</b>						
ESV ID	Radial 1	Radial 2	Distance	Minimum Altitude	Maximum Altitude	Action Type
FAA 031935 - 001	6					
Requirement/Remarks:						
Signature:		Routing Symbol:			Date:	

**ESV Details**

Originating Office :AJV-A431		Airspace Docket Number :		Request Type :Establish		
<b>Facility Data</b>						
Chart Name:WALBY, ILS OR LOC RWY 18R		City:COVINGTON		Ident:CJN		State:KY
Type/Class: DME		Frequency: M1131		Reference Number: 24106953		
<b>Extended Service Volume Data: (Requesting Officer)</b>						
ESV ID	Radial 1	Radial 2	Distance	Minimum Altitude	Maximum Altitude	
FAA 031947 - 001	6		21	53	70	
Requirement: WALBY, ILS OR LOC RWY 18R						
Signature:GONZALES EMMANUEL		Routing Symbol:				Date:10/29/2024
<b>Extended Service Volume Data: (FMO)</b>						
ESV ID	Radial 1	Radial 2	Distance	Minimum Altitude	Maximum Altitude	Action Type
FAA 031947 - 001	6		21	53	70	APPROVE
Requirement/Remarks: WALBY, ILS OR LOC RWY 18RAPPROVED. FREQ. PROTECTION & FIELD STRENGTH. PENDING FLIGHT INSPECT @ REQUIRED. DIST. & MIN ALT..						
Signature:Hughes Dennis		Routing Symbol:			Date:10/30/2024	
<b>Extended Service Volume Data: (Super FMO)</b>						
ESV ID	Radial 1	Radial 2	Distance	Minimum Altitude	Maximum Altitude	Action Type
FAA 031947 - 001	6		21	53	70	APPROVE
Requirement/Remarks: WALBY, ILS OR LOC RWY 18RAPPROVED. FREQ. PROTECTION & FIELD STRENGTH. PENDING FLIGHT INSPECT @ REQUIRED. DIST. & MIN ALT..						
Signature:Hughes Dennis		Routing Symbol:			Date:10/30/2024	
<b>Extended Service Volume Data: (FIFO)</b>						
ESV ID	Radial 1	Radial 2	Distance	Minimum Altitude	Maximum Altitude	Action Type
FAA 031947 - 001	6					
Requirement/Remarks:						
Signature:		Routing Symbol:			Date:	

**ESV Details**

Originating Office :AJV-A431		Airspace Docket Number :		Request Type :Establish		
<b>Facility Data</b>						
Chart Name:VEWIR, ILS OR LOC RWY 18R		City:COVINGTON		Ident:CJN		State:KY
Type/Class: LOC		Frequency: M110.75		Reference Number: 24106954		
<b>Extended Service Volume Data: (Requesting Officer)</b>						
ESV ID	Radial 1	Radial 2	Distance	Minimum Altitude	Maximum Altitude	
FAA 031935 - 002	6		18	53	60	
Requirement: VEWIR, ILS OR LOC RWY 18R						
Signature:GONZALES EMMANUEL		Routing Symbol:			Date:10/29/2024	
<b>Extended Service Volume Data: (FMO)</b>						
ESV ID	Radial 1	Radial 2	Distance	Minimum Altitude	Maximum Altitude	Action Type
FAA 031935 - 002	6		18	53	60	APPROVE
Requirement/Remarks: VEWIR, ILS OR LOC RWY 18RAPPROVED. FREQ. PROTECTION & FIELD STRENGTH. PENDING FLIGHT INSPECT @ REQUIRED. DIST. & MIN ALT..						
Signature:Hughes Dennis		Routing Symbol:			Date:10/30/2024	
<b>Extended Service Volume Data: (Super FMO)</b>						
ESV ID	Radial 1	Radial 2	Distance	Minimum Altitude	Maximum Altitude	Action Type
FAA 031935 - 002	6		18	53	60	APPROVE
Requirement/Remarks: VEWIR, ILS OR LOC RWY 18RAPPROVED. FREQ. PROTECTION & FIELD STRENGTH. PENDING FLIGHT INSPECT @ REQUIRED. DIST. & MIN ALT..						
Signature:Hughes Dennis		Routing Symbol:			Date:10/30/2024	
<b>Extended Service Volume Data: (FIFO)</b>						
ESV ID	Radial 1	Radial 2	Distance	Minimum Altitude	Maximum Altitude	Action Type
FAA 031935 - 002	6					
Requirement/Remarks:						
Signature:		Routing Symbol:			Date:	

**ESV Details**

Originating Office :AJV-A431		Airspace Docket Number :		Request Type :Establish		
<b>Facility Data</b>						
Chart Name:VEWIR, ILS OR LOC RWY 18R		City:COVINGTON		Ident:CJN		State:KY
Type/Class: DME		Frequency: M1131		Reference Number: 24106955		
<b>Extended Service Volume Data: (Requesting Officer)</b>						
ESV ID	Radial 1	Radial 2	Distance	Minimum Altitude	Maximum Altitude	
FAA 031947 - 002	6		18	53	60	
Requirement: VEWIR, ILS OR LOC RWY 18R						
Signature:GONZALES EMMANUEL		Routing Symbol:				Date:10/29/2024
<b>Extended Service Volume Data: (FMO)</b>						
ESV ID	Radial 1	Radial 2	Distance	Minimum Altitude	Maximum Altitude	Action Type
FAA 031947 - 002	6		18	53	60	APPROVE
Requirement/Remarks: VEWIR, ILS OR LOC RWY 18RAPPROVED. FREQ. PROTECTION & FIELD STRENGTH. PENDING FLIGHT INSPECT @ REQUIRED. DIST. & MIN ALT..						
Signature:Hughes Dennis		Routing Symbol:			Date:10/30/2024	
<b>Extended Service Volume Data: (Super FMO)</b>						
ESV ID	Radial 1	Radial 2	Distance	Minimum Altitude	Maximum Altitude	Action Type
FAA 031947 - 002	6		18	53	60	APPROVE
Requirement/Remarks: VEWIR, ILS OR LOC RWY 18RAPPROVED. FREQ. PROTECTION & FIELD STRENGTH. PENDING FLIGHT INSPECT @ REQUIRED. DIST. & MIN ALT..						
Signature:Hughes Dennis		Routing Symbol:			Date:10/30/2024	
<b>Extended Service Volume Data: (FIFO)</b>						
ESV ID	Radial 1	Radial 2	Distance	Minimum Altitude	Maximum Altitude	Action Type
FAA 031947 - 002	6					
Requirement/Remarks:						
Signature:		Routing Symbol:			Date:	

LOC/DME I-CJN	APP CRS	Rwy Idg	8000
110.75	186°	TDZE	868
Chan 44 (Y)		Apt Elev	896

**OLD**

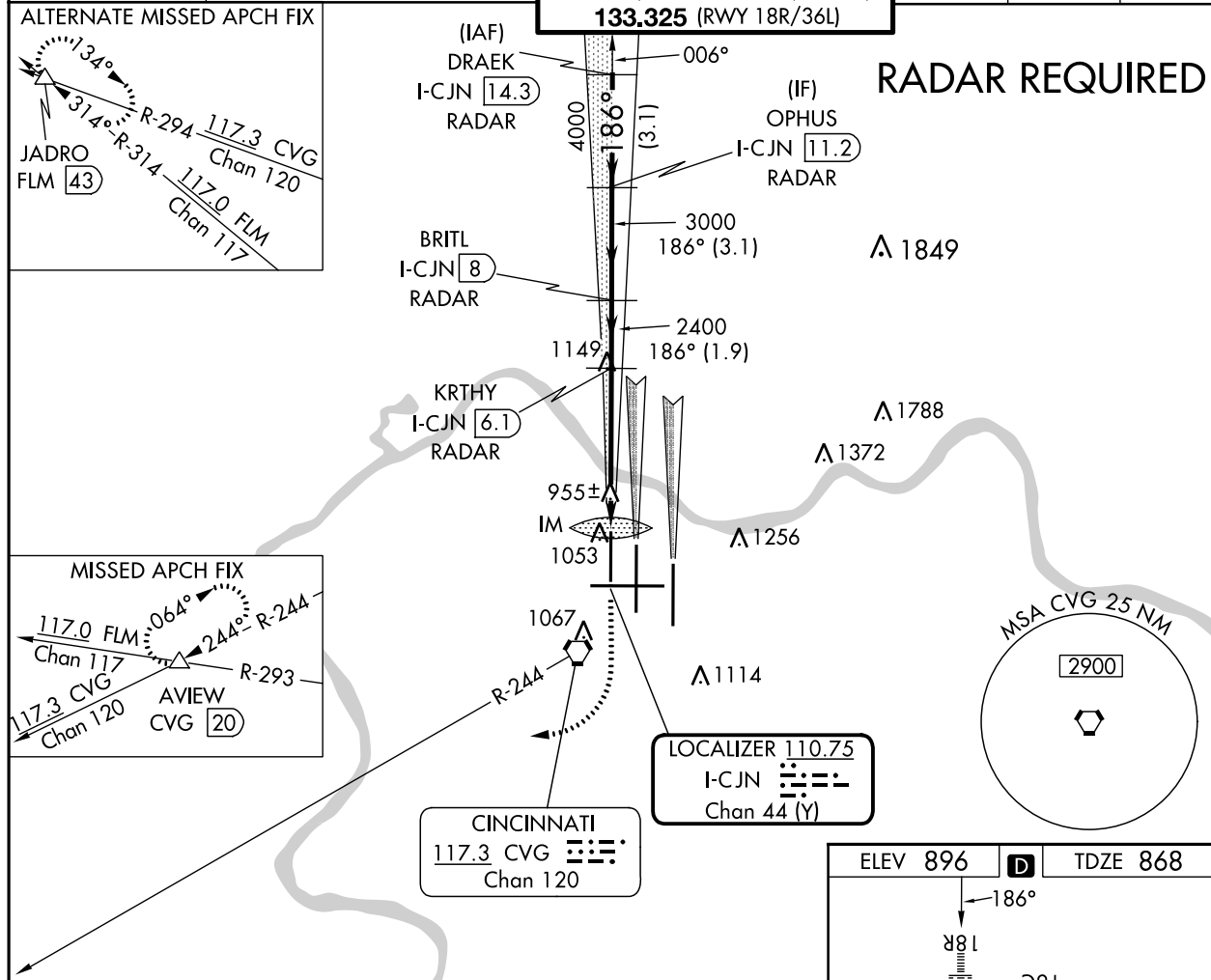
# ILS or LOC RWY 18R

CINCINNATI/NORTHERN KENTUCKY INTL (CVG)

⚠ Simultaneous approach authorized with Rwy 18C and 18L.  
⚠ DME or radar required.

ALSIF-2 MISSED APPROACH: Climb to 1300 then climbing right turn to 3000 via CVG R-244 to AVIEW INT/CVG 20 DME and hold.

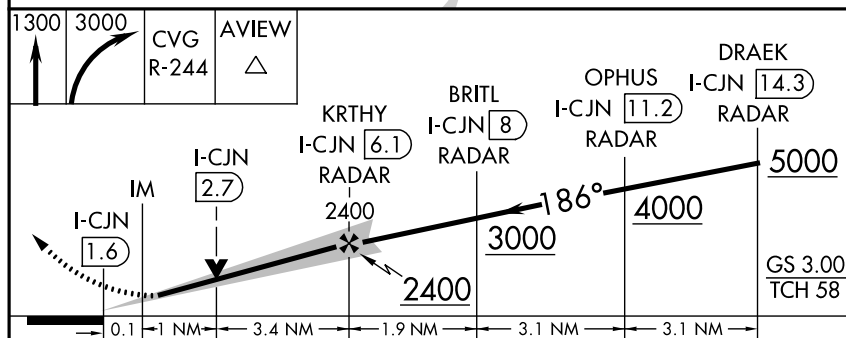
D-ATIS	CINCINNATI APP CON	CINCINNATI TOWER	GND CON	CLNC DEL	CPDLC
ARR 134.375 DEP 135.3	119.7 363.15 (090°-269°) 123.875 363.15 (270°-089°)	118.975 360.85 (RWY 18L/36R) 118.3 (RWYS 18C/36C, 09/27) 133.325 (RWY 18R/36L)	121.7	127.175	



**RADAR REQUIRED**

SE-1, 11 JUL 2024 to 08 AUG 2024

SE-1, 11 JUL 2024 to 08 AUG 2024



ELEV 896	<b>D</b>	TDZE 868			
HIRL all Rwys TDZ/CL all Rwys except 27 FAF to MAP 4.6 NM					
Knots	60	90	120	150	180
Min:Sec	4:36	3:04	2:18	1:50	1:32

CATEGORY	A	B	C	D
S-ILS 18R	1068/18 200 (200-½)			
S-LOC 18R	1300/24 432 (500-½)	1300/40 432 (500-¾)	1300/50 432 (500-1)	
CIRCLING	1460-1 564 (600-1)	1560-1¾ 664 (700-¾)	1560-2 664 (700-2)	



LOC/DME I-CJN <b>110.75</b> Chan <b>44</b> (Y)	APP CRS <b>186°</b>	Rwy Idg <b>8000</b>
		TDZE <b>868</b>
		Apt Elev <b>896</b>

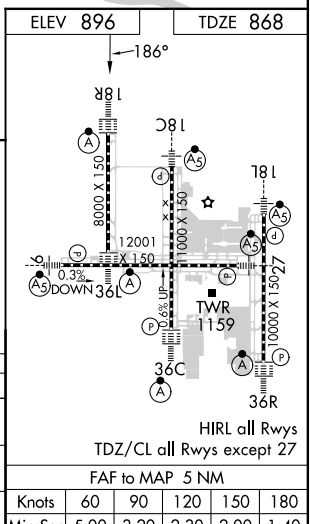
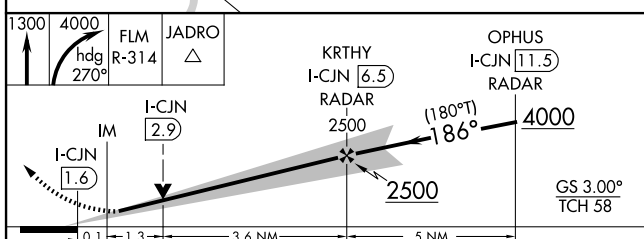
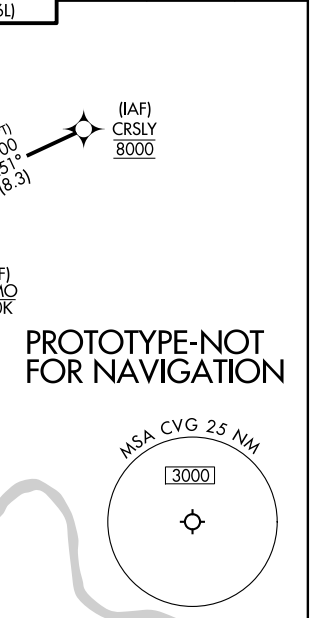
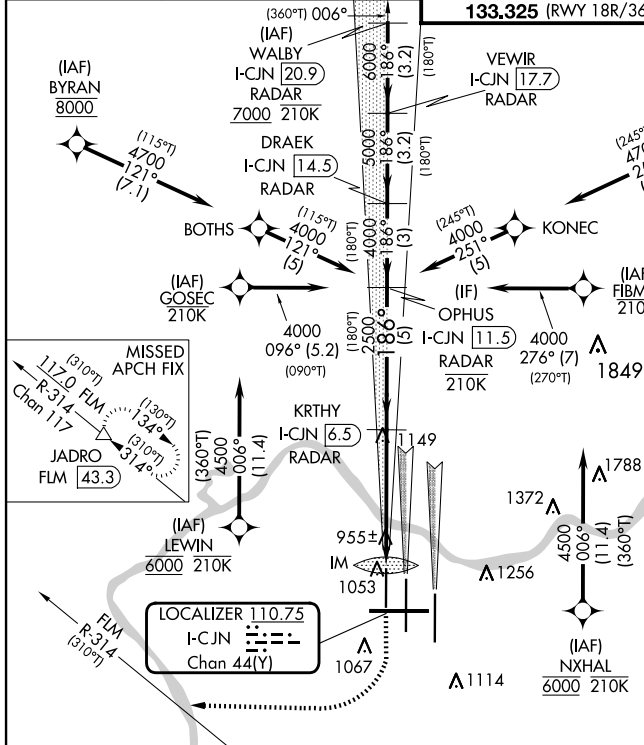
# ILS or LOC RWY 18R

CINCINNATI/NORTHERN KENTUCKY INTL (CVG)

RNP APCH - GPS. From BYRAN, CRSLY, GOSEC, FIMBO, LEWIN and NXHAL.  
DME or RADAR required. RADAR required for procedure entry at WALBY.  
For inop ALS, increase S-LOC 18R Cot C/D visibility to 1 1/2 SM.  
Simultaneous approach authorized with Rwy 18L/C. Use of FD or AP required during simultaneous operations.

ALSF-2  
MISSED APPROACH: Climb to 1300 then climbing right turn to 4000 on heading 270° and FLM VOR/DME R-314 to JADRO/FLM 43.3 DME/RADAR and hold.

D-ATIS ARR <b>134.375</b> DEP <b>135.3</b>	CINCINNATI APP CON <b>119.7 363.15</b> (090°-269°) <b>123.875 363.15</b> (270°-089°)	CINCINNATI TOWER <b>118.975 360.85</b> (RWY 18L/36R) <b>118.3</b> (RWYS 18C/36C, 09/27) <b>133.325</b> (RWY 18R/36L)	GND CON <b>121.7</b>	CLNC DEL <b>127.175</b>	CPDLC
---	--	---	-------------------------	----------------------------	-------



CATEGORY	A	B	C	D
S-ILS 18R		1068/18	200 (200-1/2)	
S-LOC 18R	1360/24	492 (500-1/2)	1360/50	492 (500-1)
CIRCLING	1460-1	564 (600-1)	1560-1 3/4 664 (700-1 3/4)	1560-2 664 (700-2)

LOC/DME I-CJN	APP CRS	Rwy Idg	8000
<b>110.75</b>	<b>186°</b>	TDZE	<b>868</b>
Chan <b>44</b> (Y)		Apt Elev	<b>896</b>

**OLD**

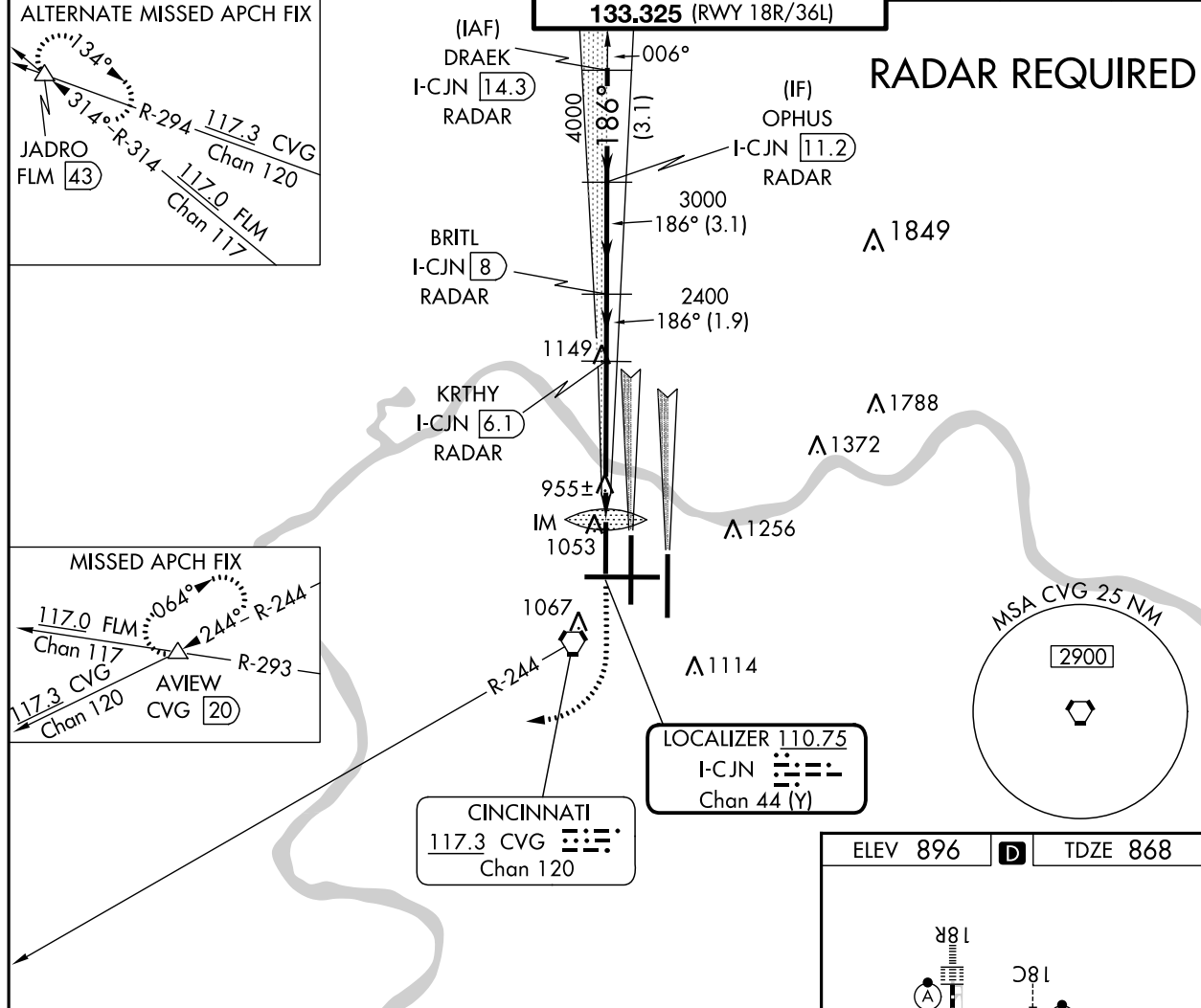
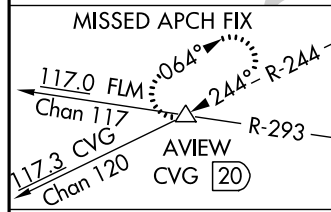
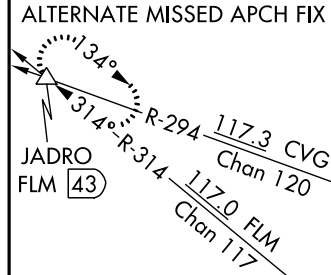
# ILS RWY 18R (CAT II)

CINCINNATI/NORTHERN KENTUCKY INTL (CVG)

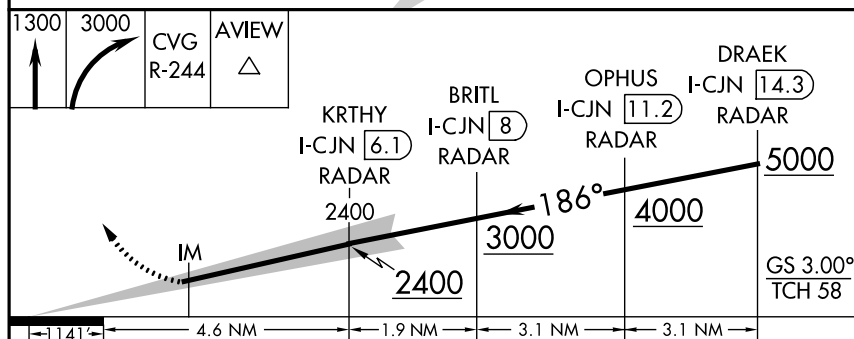
Simultaneous approach authorized with Rwy 18C and 18L.  
 DME or radar required.

ALSF-2  
  
 MISSED APPROACH: Climb to 3000 then climbing right turn to 3000 via CVG R-244 to AVIEW INT/ CVG 20 DME and hold.

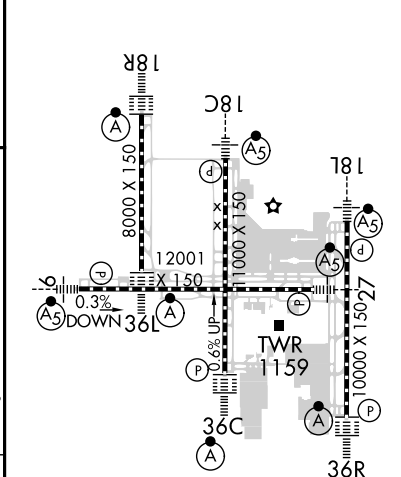
D-ATIS	CINCINNATI APP CON	CINCINNATI TOWER	GND CON	CLNC DEL	CPDLC
ARR <b>134.375</b> DEP <b>135.3</b>	<b>119.7 363.15</b> (090°-269°) <b>123.875 363.15</b> (270°-089°)	<b>118.975 360.85</b> (RWY 18L/36R) <b>118.3</b> (RWYS 18C/36C, 09/27) <b>133.325</b> (RWY 18R/36L)	<b>121.7</b>	<b>127.175</b>	



## RADAR REQUIRED



ELEV 896 **D** TDZE 868



CATEGORY	A	B	C	D
S-ILS-18R	RA 113/12	100	DA 968	

**CATEGORY II ILS - SPECIAL AIRCREW & AIRCRAFT CERTIFICATION REQUIRED**

HIRL all Rwys  
TDZ/CL all Rwys except 27

SE-1, 11 JUL 2024 to 08 AUG 2024

SE-1, 11 JUL 2024 to 08 AUG 2024

COVINGTON, KENTUCKY

AL-655 (FAA)

FIG

LOC/DME I-CJN <b>110.75</b> Chan <b>44</b> (Y)	APP CRS <b>186°</b>	Rwy Idg TDZE Apt Elev	<b>8000</b> <b>868</b> <b>896</b>
--	------------------------	-----------------------------	---

# ILS RWY 18R (CAT II)

CINCINNATI/NORTHERN KENTUCKY INTL (CVG)

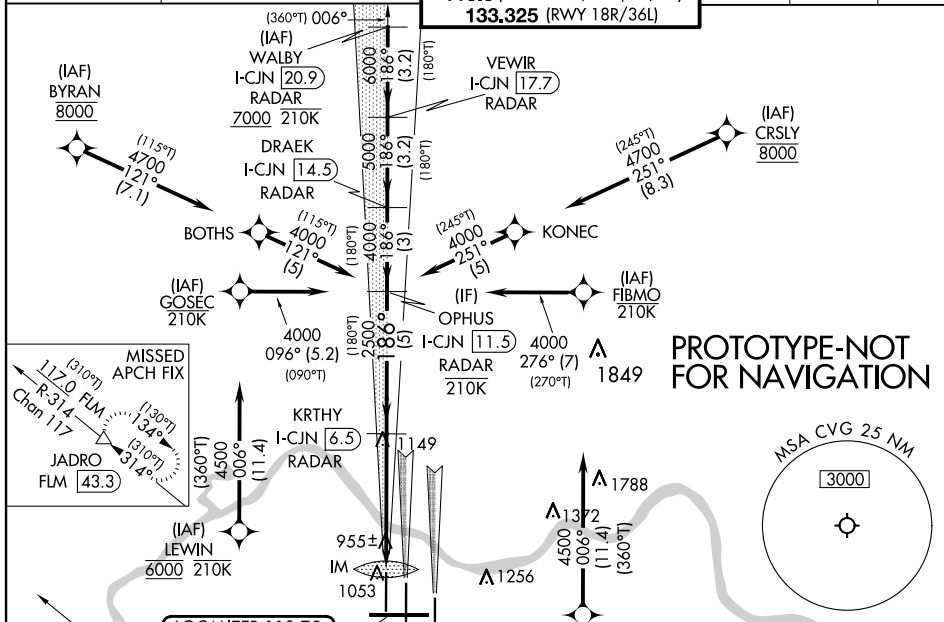
RNP APCH - GPS. From BYRAN, CRSLY, GOSEC, FIMBO, LEWIN and NXHAL.  
DME or RADAR required. RADAR required for procedure entry at WALBY.



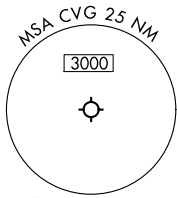
MISSED APPROACH: Climb to 1300 then climbing right turn to 4000 on heading 270° and FLM VOR/DME R-314 to JADRO/FLM 43.3 DME/RADAR and hold.

Simultaneous approach authorized with Rwy 18L/C.  
Use of FD or AP required during simultaneous operations.

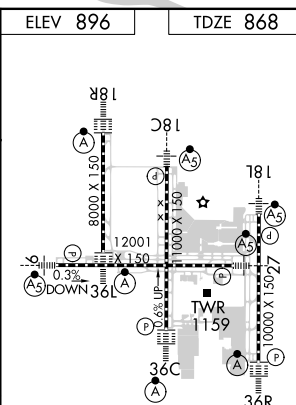
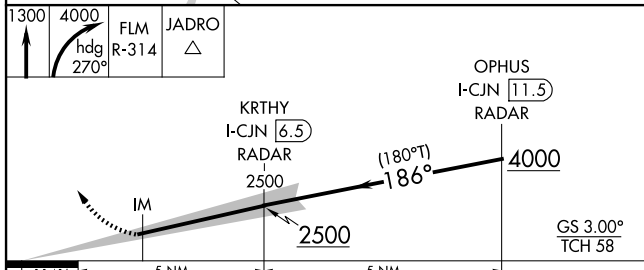
D-ATIS ARR <b>134.375</b> DEP <b>135.3</b>	CINCINNATI APP CON <b>119.7 363.15</b> (090°-269°) <b>123.875 363.15</b> (270°-089°)	CINCINNATI TOWER <b>118.975 360.85</b> (RWY 18L/36R) <b>118.3</b> (RWYS 18C/36C, 09/27) <b>133.325</b> (RWY 18R/36L)	GND CON <b>121.7</b>	CLNC DEL <b>127.175</b>	CPDLC
---	--	---	-------------------------	----------------------------	-------



**PROTOTYPE-NOT FOR NAVIGATION**



ELEV 896	TDZE 868
----------	----------



CATEGORY	A	B	C	D
5-ILS-18R	RA 113/12		100	DA 968

**CATEGORY II ILS - SPECIAL AIRCREW & AIRCRAFT CERTIFICATION REQUIRED**

HIRL all Rwys  
TDZ/CL all Rwys except 27

COVINGTON, KENTUCKY

CINCINNATI/NORTHERN KENTUCKY INTL (CVG)

Amr 2 FIG

39°03'N-84°40'W

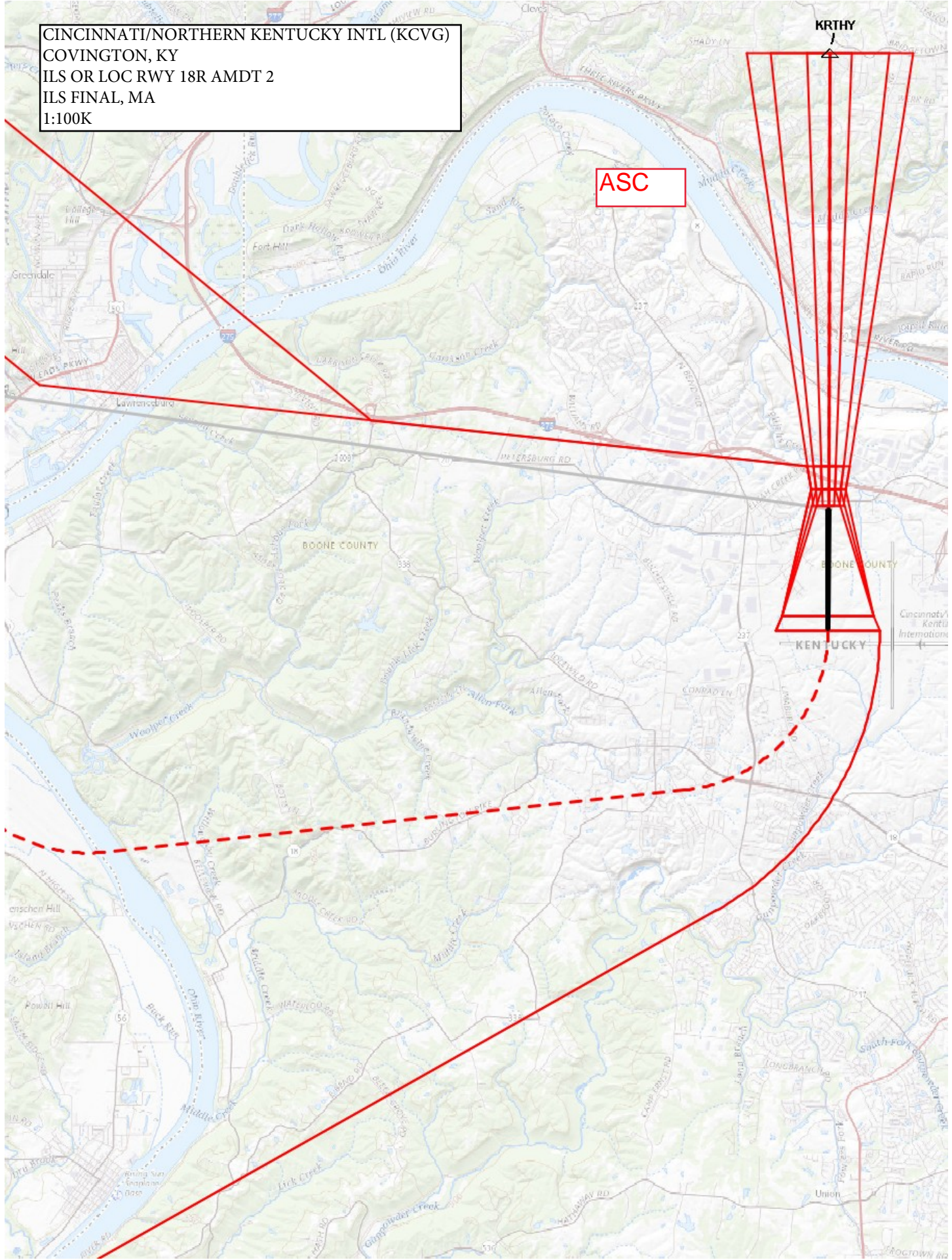
# ILS RWY 18R (CAT II)



CINCINNATI/NORTHERN KENTUCKY INTL (KCVG)  
COVINGTON, KY  
ILS OR LOC RWY 18R AMDT 2  
ILS FINAL, MA  
1:100K

ASC

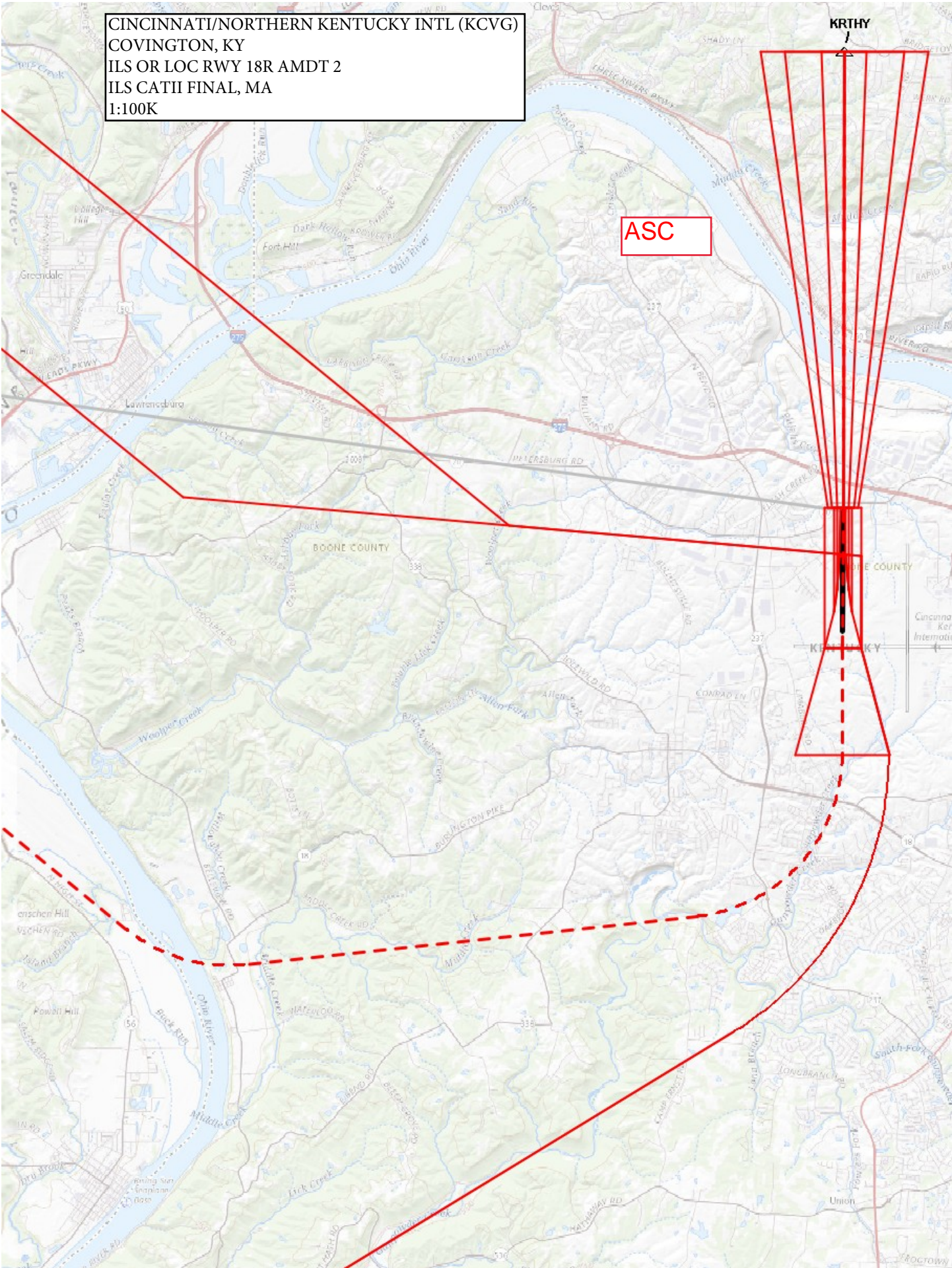
KRTHY



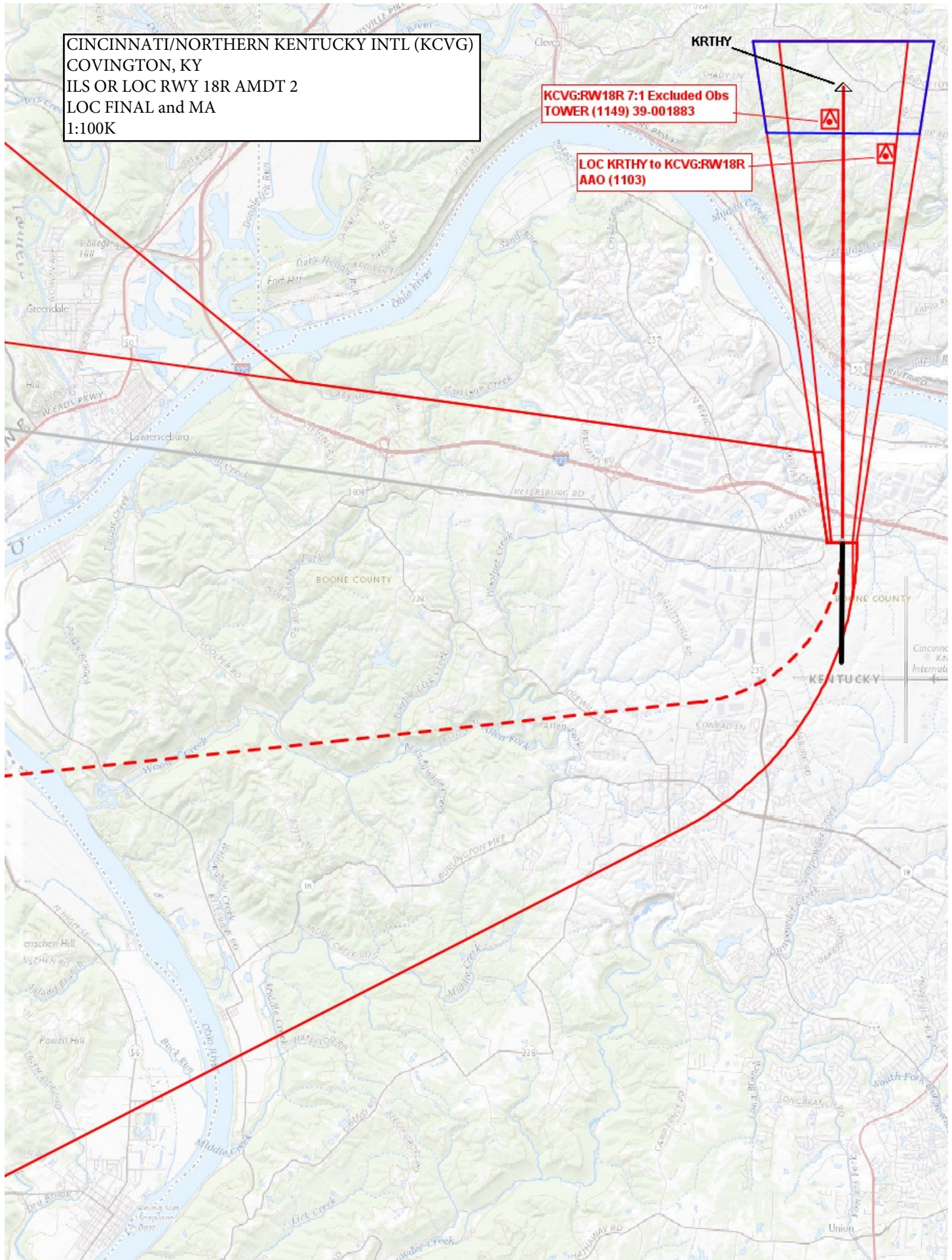
CINCINNATI/NORTHERN KENTUCKY INTL (KCVG)  
COVINGTON, KY  
ILS OR LOC RWY 18R AMDT 2  
ILS CATII FINAL, MA  
1:100K

ASC

KRTHY



CINCINNATI/NORTHERN KENTUCKY INTL (KCVG)  
COVINGTON, KY  
ILS OR LOC RWY 18R AMDT 2  
LOC FINAL and MA  
1:100K



KRTHY

KCVG:RW18R 7:1 Excluded Obs  
TOWER (1149) 39-001883

LOC KRTHY to KCVG:RW18R  
AAO (1103)

BOONE COUNTY

KENTUCKY

Cincinnati  
Kentucky  
International

CINCINNATI/NORTHERN KENTUCKY INTL (KCVG)  
COVINGTON, KY  
ILS OR LOC RWY 18R AMDT 2  
CIRCLING  
1:100K

