

FEDERAL AVIATION ADMINISTRATION
 FLIGHT STANDARDS SERVICE
 STANDARD TERMINAL ARRIVAL (STAR)

Bearings, headings, courses, tracks and radials are magnetic. Elevations and altitudes are in feet, MSL. Altitudes are minimum altitudes unless otherwise indicated.
 Ceilings are in feet above airport elevation. Distances are in nautical miles. Visibilities are in statute miles or feet RVR unless otherwise indicated.

Arrival Name	Number	STAR Computer Code	Superseded Number	Dated	Effective Date
BANGZ (RNAV)	TWO	BANGZ.BANGZ2	ONE	05/19/22	

TRANSITION ROUTES:

Transition Name	Transition Computer Codes	From FIX/NAVAID	To FIX/NAVAID	Course	Distance	MEA	MOCA	MAA	Crossing Altitudes / Fixes
ACORI	ACORI.BANGZ2	ACORI	ACORI						
			CABLO	143.52	79.46	8000	2600		
			THRTL	144.08	35.12	8000	2600		
			HEVVN	144.24	40.11	8000	2600		
			CLAMP	155.60	32.67	8000	2600		
			LALAA	168.44	23.08	8000	2600		
			CORRL	160.51	38.30	8000	2600	AT/ABOVE 8000	
			BANGZ	161.14	07.49	6000	2600	BETWEEN 7000 AND 13000	
BADDD	BADDD.BANGZ2	BADDD	BADDD						
			GPEEE	257.83	62.97	8000	2600		
			THRTL	211.98	60.21	8000	2600		
			HEVVN	144.24	40.11	8000	2600		
			CLAMP	155.60	32.67	8000	2600		
			LALAA	168.44	23.08	8000	2600		
			CORRL	160.51	38.30	8000	2600	AT/ABOVE 8000	
			BANGZ	161.14	07.49	6000	2600	BETWEEN 7000 AND 13000	
DEFUN	DEFUN.BANGZ2	DEFUN	DEFUN						
			CABLO	096.70	66.78	8000	2600		
			THRTL	144.08	35.12	8000	2600		
			HEVVN	144.24	40.11	8000	2600		
			CLAMP	155.60	32.67	8000	2600		
			LALAA	168.44	23.08	8000	2600		
			CORRL	160.51	38.30	8000	2600	AT/ABOVE 8000	
			BANGZ	161.14	07.49	6000	2600	BETWEEN 7000 AND 13000	
HEVVN	HEVVN.BANGZ2	HEVVN	HEVVN						
			CLAMP	155.60	32.67	8000	2600		
			LALAA	168.44	23.08	8000	2600		

FEDERAL AVIATION ADMINISTRATION
 FLIGHT STANDARDS SERVICE
 STANDARD TERMINAL ARRIVAL (STAR)

Bearings, headings, courses, tracks and radials are magnetic. Elevations and altitudes are in feet, MSL. Altitudes are minimum altitudes unless otherwise indicated. Ceilings are in feet above airport elevation. Distances are in nautical miles. Visibilities are in statute miles or feet RVR unless otherwise indicated.

Arrival Name	Number		STAR Computer Code	Superseded Number			Dated	Effective Date	
BANGZ (RNAV)	TWO		BANGZ.BANGZ2	ONE			05/19/22		
Transition Name	Transition Computer Codes	From FIX/NAVAID	To FIX/NAVAID	Course	Distance	MEA	MOCA	MAA	Crossing Altitudes / Fixes
			CORRL	160.51	38.30	8000	2600		AT/ABOVE 8000
			BANGZ	161.14	07.49	6000	2600		BETWEEN 7000 AND 13000
HONID	HONID.BANGZ2	HONID	HONID						
			THRTL	185.07	78.83	8000	2600		
			HEVVN	144.24	40.11	8000	2600		
			CLAMP	155.60	32.67	8000	2600		
			LALAA	168.44	23.08	8000	2600		
			CORRL	160.51	38.30	8000	2600		AT/ABOVE 8000
			BANGZ	161.14	07.49	6000	2600		BETWEEN 7000 AND 13000

ARRIVAL ROUTE DESCRIPTION:

LANDING SRQ RWY 14: FROM BANGZ ON TRACK 144.12/6.55 TO KIDLE, THEN ON TRACK 182.74/24.55 TO ALROE, THEN ON TRACK 137.58/7.94 TO MAHAR, THEN ON TRACK 139.71/13.08 TO CROSS PASOE AT OR ABOVE 2000, THEN ON TRACK 139.71. EXPECT RADAR VECTORS TO FINAL APPROACH COURSE.

LANDING SRQ RWY 32: FROM BANGZ ON TRACK 144.12/6.55 TO KIDLE, THEN ON TRACK 182.74/24.55 TO ALROE, THEN ON TRACK 137.58/7.94 TO MAHAR, THEN ON TRACK 128.03/25.22 TO FIVDO, THEN ON TRACK 138.71/12.76 TO CROSS MURDO AT OR ABOVE 2000, THEN ON TRACK 228.00. EXPECT RADAR VECTORS TO FINAL APPROACH COURSE.

LANDING PIE/CLW/SPG: FROM BANGZ ON TRACK 144.12/6.55 TO KIDLE, THEN ON TRACK 098.57/8.17 TO CROSS BOLTS AT OR ABOVE 3000, THEN ON TRACK 090.00. EXPECT RADAR VECTORS TO FINAL APPROACH COURSE.

LANDING VNC: FROM BANGZ ON TRACK 144.12/6.55 TO KIDLE, THEN ON TRACK 182.74/24.55 TO ALROE, THEN ON TRACK 149.64/7.46 TO CROSS COVUM AT OR ABOVE 6000, THEN ON TRACK 149.64. EXPECT RADAR VECTORS TO FINAL APPROACH COURSE.

PBN REQUIREMENT NOTES:

RNAV 1 - DME/DME/IRU OR GPS

EQUIPMENT REQUIREMENT NOTES:

RADAR REQUIRED

PROCEDURAL DATA NOTES:

NOTE: JET AND TURBOPROP AIRCRAFT ONLY

NOTE: BADD TRANSITION, HEVVN TRANSITION, ATC ASSIGNED ONLY.

FIXES AND/OR HOLDING PATTERNS:

CHART HOLDING AT CORRL: HOLD N, RT, 160.51 INBOUND, 10 NM LEGS.

CHART HOLDING AT HEVVN: HOLD NW, LT, 155.59 INBOUND, 10 NM LEGS.

CHART HOLDING AT THRTL: HOLD NW, LT, 144.24 INBOUND, 10 NM LEGS.

CHART: KRSTI

COMMUNICATIONS:

FEDERAL AVIATION ADMINISTRATION
 FLIGHT STANDARDS SERVICE
 STANDARD TERMINAL ARRIVAL (STAR)

Bearings, headings, courses, tracks and radials are magnetic. Elevations and altitudes are in feet, MSL. Altitudes are minimum altitudes unless otherwise indicated.
 Ceilings are in feet above airport elevation. Distances are in nautical miles. Visibilities are in statute miles or feet RVR unless otherwise indicated.

Arrival Name	Number	STAR Computer Code	Superseded Number	Dated	Effective Date
BANGZ (RNAV)	TWO	BANGZ.BANGZ2	ONE	05/19/22	

- 6. REMOVED AIRPORT NAME FROM AIRPORTS SERVED AND ADDED AIRPORT ID; REMOVED K IDENT FROM 17.1 FORM.
- 7. REFORMATTED BADDD AND HEVVN TRANSITIONS NOTES TO READ: BADDD TRANSITION, HEVVN TRANSITION, ATC ASSIGNED ONLY.
- 8. ADDED SPG AND CLW TO BOLTS TERMINUS NOTE IN ADDITIONAL FLIGHT DATA.

REASONS:

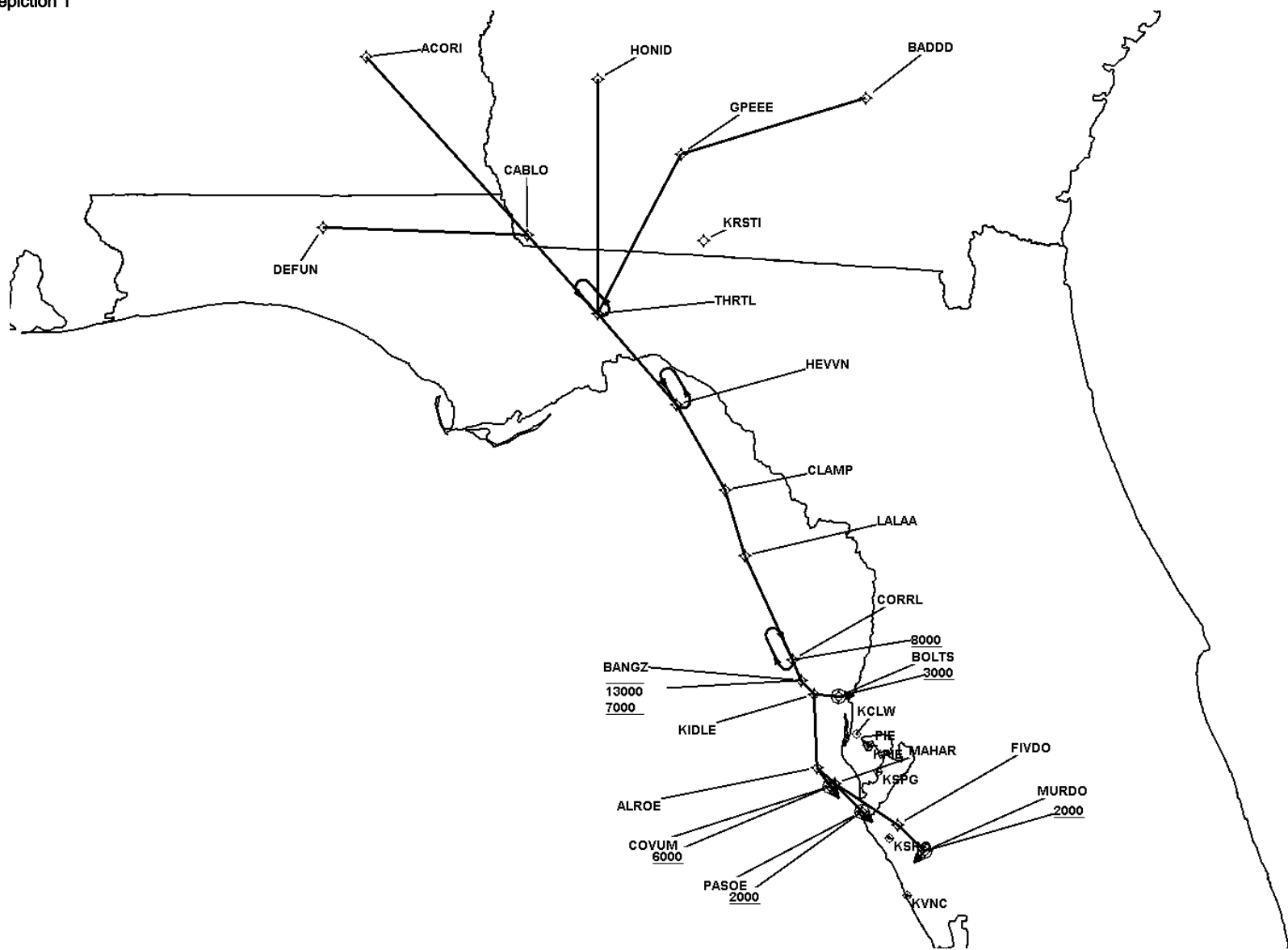
- 1-3. ATC REQUEST
- 4. CHARTING CRITERIA.
- 5. CONNECTED TO APPROACH CRITERIA, ILS/GPS IAF IS AOA 2000.
- 6. CURRENT DOCUMENTATION STANDARDS.
- 7. FORMAT UPDATED IAW 8260.19J PARA4-5-12(d)3(B).
- 8. SPG AND CLW ADDED TO BOLTS COMMON ROUTE.

FEDERAL AVIATION ADMINISTRATION
 FLIGHT STANDARDS SERVICE
 STANDARD TERMINAL ARRIVAL (STAR)

Bearings, headings, courses, tracks and radials are magnetic. Elevations and altitudes are in feet, MSL. Altitudes are minimum altitudes unless otherwise indicated. Ceilings are in feet above airport elevation. Distances are in nautical miles. Visibilities are in statute miles or feet RVR unless otherwise indicated.

Arrival Name	Number	STAR Computer Code	Superseded Number	Dated	Effective Date
BANGZ (RNAV)	TWO	BANGZ.BANGZ2	ONE	05/19/22	

Graphic Depiction 1

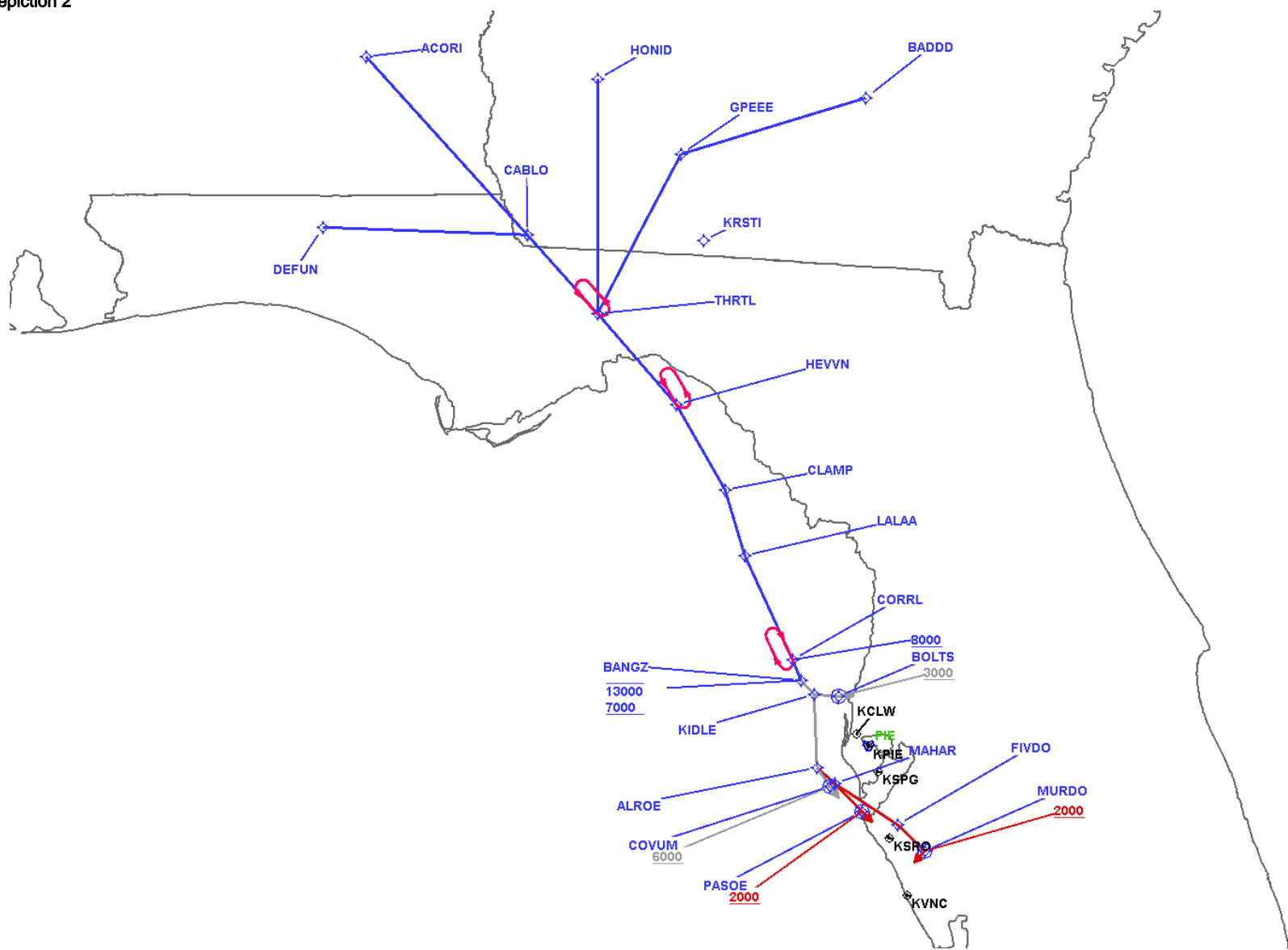


FEDERAL AVIATION ADMINISTRATION
 FLIGHT STANDARDS SERVICE
 STANDARD TERMINAL ARRIVAL (STAR)

Bearings, headings, courses, tracks and radials are magnetic. Elevations and altitudes are in feet, MSL. Altitudes are minimum altitudes unless otherwise indicated. Ceilings are in feet above airport elevation. Distances are in nautical miles. Visibilities are in statute miles or feet RVR unless otherwise indicated.

Arrival Name	Number	STAR Computer Code	Superseded Number	Dated	Effective Date
BANGZ (RNAV)	TWO	BANGZ.BANGZ2	ONE	05/19/22	

Graphic Depiction 2

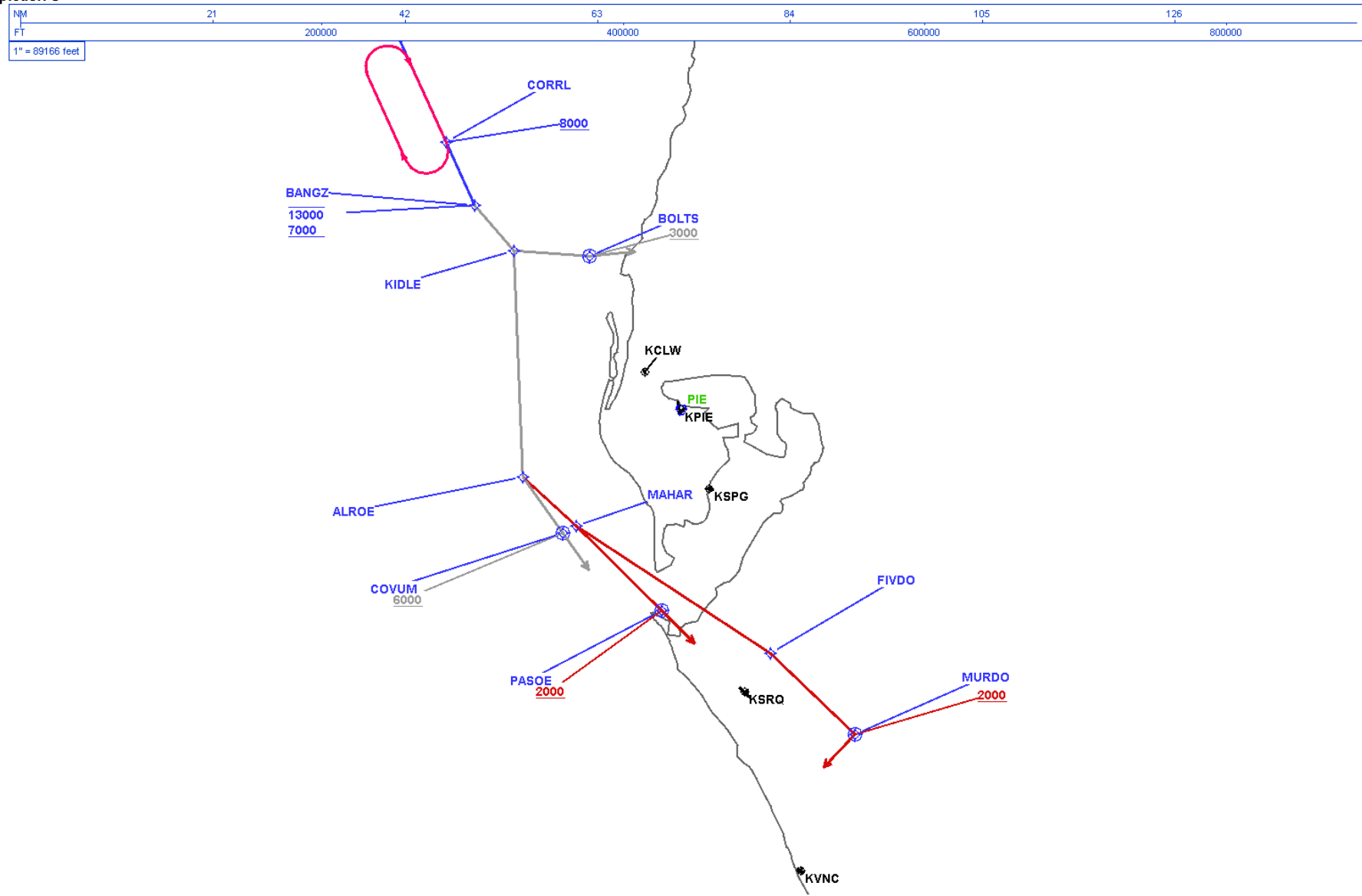


FEDERAL AVIATION ADMINISTRATION
 FLIGHT STANDARDS SERVICE
 STANDARD TERMINAL ARRIVAL (STAR)

Bearings, headings, courses, tracks and radials are magnetic. Elevations and altitudes are in feet, MSL. Altitudes are minimum altitudes unless otherwise indicated. Ceilings are in feet above airport elevation. Distances are in nautical miles. Visibilities are in statute miles or feet RVR unless otherwise indicated.

Arrival Name	Number	STAR Computer Code	Superseded Number	Dated	Effective Date
BANGZ (RNAV)	TWO	BANGZ.BANGZ2	ONE	05/19/22	

Graphic Depiction 3



FEDERAL AVIATION ADMINISTRATION
 FLIGHT STANDARDS SERVICE
 STAR (DATA RECORD)

Arrival Name BANGZ (RNAV)	Number TWO	STAR Computer Code BANGZ.BANGZ2		Superseded Number ONE		Dated 05/19/22	Effective Date		
<u>FIX/NAVAID</u>	<u>LAT/LONG</u>	<u>C</u>	<u>FO/FB</u>	<u>LEG TYPE</u>	<u>TC</u>	<u>DIST (NM)</u>	<u>ALTITUDE</u>	<u>SPEED</u>	<u>REMARKS</u>
En Route Transition									
ACORI	314623.36N / 0855129.51W	Y		IF					ACORI.BANGZ2
CABLO	304629.00N / 0845024.00W	Y	FB	TF	138.52	79.46			
THRTL	301949.99N / 0842349.07W	Y	FB	TF	139.08	35.12			
HEVVN	294919.11N / 0835342.89W	Y	FB	TF	139.24	40.11			
CLAMP	292045.84N / 0833521.61W	Y	FB	TF	150.60	32.67			
LALAA	285835.08N / 0832751.69W	Y	FB	TF	163.44	23.08			
CORRL	282337.04N / 0830951.57W	Y	FB	TF	155.51	38.30	AT/ABOVE 8000		
BANGZ	281644.74N / 0830625.61W	Y	FB	TF	156.14	07.49	7000B13000		
En Route Transition									
BADDD	313237.68N / 0824205.34W	Y		IF					BADDD.BANGZ2
GPEEE	311340.41N / 0835215.08W	Y	FB	TF	252.83	62.97			
THRTL	301949.99N / 0842349.07W	Y	FB	TF	206.98	60.21			
HEVVN	294919.11N / 0835342.89W	Y	FB	TF	139.24	40.11			
CLAMP	292045.84N / 0833521.61W	Y	FB	TF	150.60	32.67			
LALAA	285835.08N / 0832751.69W	Y	FB	TF	163.44	23.08			
CORRL	282337.04N / 0830951.57W	Y	FB	TF	155.51	38.30	AT/ABOVE 8000		
BANGZ	281644.74N / 0830625.61W	Y	FB	TF	156.14	07.49	7000B13000		
En Route Transition									
DEFUN	304851.27N / 0860753.09W	Y		IF					DEFUN.BANGZ2
CABLO	304629.00N / 0845024.00W	Y	FB	TF	091.70	66.78			
THRTL	301949.99N / 0842349.07W	Y	FB	TF	139.08	35.12			
HEVVN	294919.11N / 0835342.89W	Y	FB	TF	139.24	40.11			
CLAMP	292045.84N / 0833521.61W	Y	FB	TF	150.60	32.67			
LALAA	285835.08N / 0832751.69W	Y	FB	TF	163.44	23.08			
CORRL	282337.04N / 0830951.57W	Y	FB	TF	155.51	38.30	AT/ABOVE 8000		
BANGZ	281644.74N / 0830625.61W	Y	FB	TF	156.14	07.49	7000B13000		



FEDERAL AVIATION ADMINISTRATION
 FLIGHT STANDARDS SERVICE
 STAR (DATA RECORD)

Arrival Name BANGZ (RNAV)	Number TWO	STAR Computer Code BANGZ.BANGZ2		Superseded Number ONE	Dated 05/19/22	Effective Date			
<u>FIX/NAVAID</u>	<u>LAT/LONG</u>	<u>C</u>	<u>FO/FB</u>	<u>LEG TYPE</u>	<u>TC</u>	<u>DIST (NM)</u>	<u>ALTITUDE</u>	<u>SPEED</u>	<u>REMARKS</u>
En Route Transition									
HEVVN	294919.11N / 0835342.89W	Y		IF					HEVVN.BANGZ2
CLAMP	292045.84N / 0833521.61W	Y	FB	TF	150.60	32.67			
LALAA	285835.08N / 0832751.69W	Y	FB	TF	163.44	23.08			
CORRL	282337.04N / 0830951.57W	Y	FB	TF	155.51	38.30	AT/ABOVE 8000		
BANGZ	281644.74N / 0830625.61W	Y	FB	TF	156.14	07.49	7000B13000		
En Route Transition									
HONID	313850.31N / 0842342.60W	Y		IF					HONID.BANGZ2
THRTL	301949.99N / 0842349.07W	Y	FB	TF	180.07	78.83			
HEVVN	294919.11N / 0835342.89W	Y	FB	TF	139.24	40.11			
CLAMP	292045.84N / 0833521.61W	Y	FB	TF	150.60	32.67			
LALAA	285835.08N / 0832751.69W	Y	FB	TF	163.44	23.08			
CORRL	282337.04N / 0830951.57W	Y	FB	TF	155.51	38.30	AT/ABOVE 8000		
BANGZ	281644.74N / 0830625.61W	Y	FB	TF	156.14	07.49	7000B13000		
Common Route									
BANGZ	281644.74N / 0830625.61W	Y		IF			7000B13000		BANGZ.BANGZ2
KIDLE	281146.81N / 0830134.58W	Y	FB	TF	139.12	06.55			
BOLTS	281115.93N / 0825221.14W	Y	FO	TF	093.57	08.17	AT/ABOVE 3000		
KCLW,KPIE,KSPG				FM	085.00				
Common Route									
BANGZ	281644.74N / 0830625.61W	Y		IF			7000B13000		BANGZ.BANGZ2
KIDLE	281146.81N / 0830134.58W	Y	FB	TF	139.12	06.55			
ALROE	274711.09N / 0830029.00W	Y	FB	TF	177.74	24.55			
COVUM	274105.04N / 0825537.25W	Y	FO	TF	144.64	07.46	AT/ABOVE 6000		
KVNC				FM	144.64				



FEDERAL AVIATION ADMINISTRATION
 FLIGHT STANDARDS SERVICE
 STAR (DATA RECORD)

Arrival Name BANGZ (RNAV)	Number TWO	STAR Computer Code BANGZ.BANGZ2		Superseded Number ONE	Dated 05/19/22	Effective Date			
<u>FIX/NAVAID</u>	<u>LAT/LONG</u>	<u>C</u>	<u>FO/FB</u>	<u>LEG TYPE</u>	<u>TC</u>	<u>DIST (NM)</u>	<u>ALTITUDE</u>	<u>SPEED</u>	<u>REMARKS</u>
Runway Transition									
BANGZ	281644.74N / 0830625.61W	Y		IF			7000B13000		
KIDLE	281146.81N / 0830134.58W	Y	FB	TF	139.12	06.55			
ALROE	274711.09N / 0830029.00W	Y	FB	TF	177.74	24.55			
MAHAR	274147.52N / 0825353.64W	Y	FB	TF	132.58	07.94			
PASOE	273233.62N / 0824326.46W	Y	FO	TF	134.71	13.08	AT/ABOVE 2000		
KSRQ:RWY 14				FM	134.71				
Runway Transition									
BANGZ	281644.74N / 0830625.61W	Y		IF			7000B13000		
KIDLE	281146.81N / 0830134.58W	Y	FB	TF	139.12	06.55			
ALROE	274711.09N / 0830029.00W	Y	FB	TF	177.74	24.55			
MAHAR	274147.52N / 0825353.64W	Y	FB	TF	132.58	07.94			
FIVDO	272758.34N / 0823007.27W	Y	FB	TF	123.03	25.22			
MURDO	271907.45N / 0821945.91W	Y	FO	TF	133.71	12.76	AT/ABOVE 2000		
KSRQ:RWY 32				FM	223.00				

