

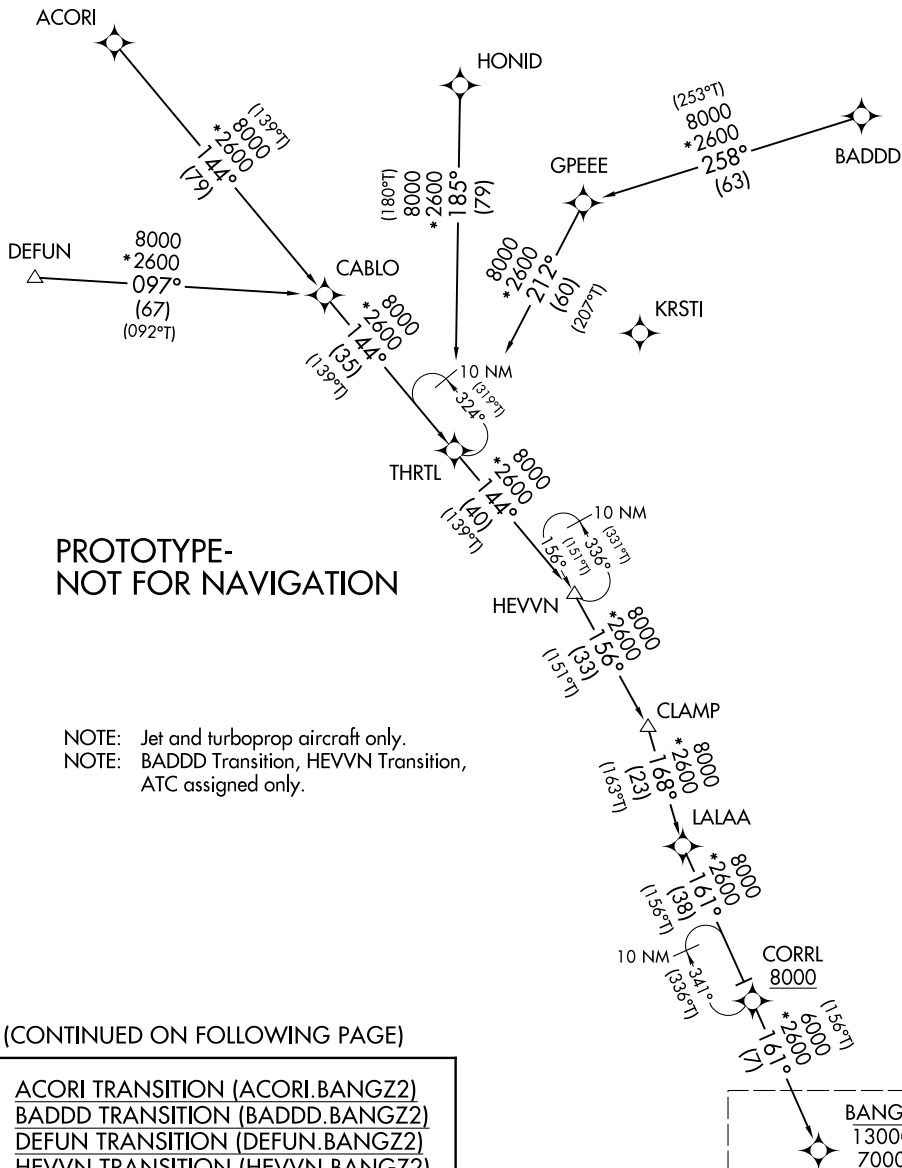
BANGZ TWO ARRIVAL (RNAV)

ST PETERSBURG-CLEARWATER, FLORIDA

RNAV 1 - DME/DME/IRU or GPS.

RADAR required.

TAMPA APP CON
118.8 239.3
PIE ATIS
134.5
SRQ ATIS
124.375



PROTOTYPE-
NOT FOR NAVIGATION

NOTE: Jet and turboprop aircraft only.
NOTE: BADDD Transition, HEVVN Transition,
ATC assigned only.

(CONTINUED ON FOLLOWING PAGE)

- ACORI TRANSITION (ACORI.BANGZ2)
- BADDD TRANSITION (BADDD.BANGZ2)
- DEFUN TRANSITION (DEFUN.BANGZ2)
- HEVVN TRANSITION (HEVVN.BANGZ2)
- HONID TRANSITION (HONID.BANGZ2)

NOTE: Chart not to scale.

See following page
for arrival routes.

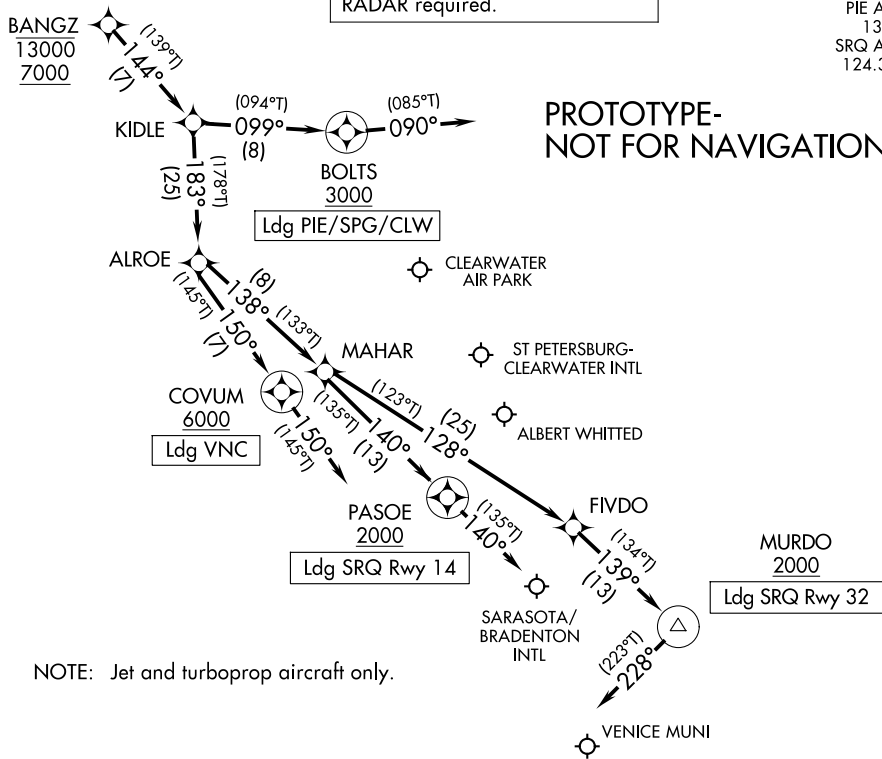
BANGZ TWO ARRIVAL (RNAV)

ST PETERSBURG-CLEARWATER, FLORIDA

RNAV 1 - DME/DME/IRU or GPS.
RADAR required.

TAMPA APP CON
118.8 239.3
PIE ATIS
134.5
SRQ ATIS
124.375

PROTOTYPE-
NOT FOR NAVIGATION



NOTE: Jet and turboprop aircraft only.

NOTE: Chart not to scale.

ARRIVAL ROUTE DESCRIPTION

LANDING SRQ RUNWAY 14: From BANGZ on track 144° to KIDLE, then on track 183° to ALROE, then on track 138° to MAHAR, then on track 140° to cross PASOE at or above 2000, then on track 140°. Expect RADAR vectors to final approach course.

LANDING SRQ RUNWAY 32: From BANGZ on track 144° to KIDLE, then on track 183° to ALROE, then on track 138° to MAHAR, then on track 128° to FIVDO, then on track 139° to cross MURDO at or above 2000, then on track 228°. Expect RADAR vectors to final approach course.

LANDING PIE/CLW/SPG: From BANGZ on track 144° to KIDLE, then on track 099° to cross BOLTS at or above 3000, then on track 090°. Expect RADAR vectors to final approach course.

LANDING VNC: From BANGZ on track 144° to KIDLE, then on track 183° to ALROE, then on track 150° to cross COVUM at or above 6000, then on track 150°. Expect RADAR vectors to final approach course.