

Flight Procedures Cover Page	Task Action: FLIGHT CHECK	Task Type: STAR	Estimated Chart Date: 04/17/2025	APWS Task ID: 2E30990B9B2E422694DEA86494A974C1	APWS Project ID: AAE177B12CB1456D8640EC027DE44576
Procedure: STAR BANGZ TWO (RNAV) ST PETERSBURG-CLEARWATER FL KPIE		Enroute: YES	Specialist: Copeland, Guy		Agreement Number:
Airport ID: KPIE			Airport City: ST PETERSBURG-CLEARWATER		State: FL
Facility ID:	Facility Type:	Flight Inspection Remark Type: New FC Slot			

Procedure Comments:  
CONTACT: ROBERT HAMILTON 405-954-4608

QUALITY  
35  
CHECKED

QUALITY  
38  
CHECKED

<b>FIPC DME/DME FORM</b>						
<b>PROCEDURE:</b> STAR BANGZ TWO (RNAV) ST PETERSBURG-			<b>AIRPORT NAME:</b> ST PETE-CLEARWATER INTL		<b>AIRPORT ID:</b> KPIE	<b>SPECIAL CONTROL NO:</b> AG-12-187-24
<b>FAC ID:</b> BANGZ2		<b>CITY:</b> ST PETERSBURG-CLEARWATER			<b>ST:</b> FL	<b>ORIG CHART DATE:</b> 04/17/2025
<b>DFL TYPE:</b> PROC/D	<b>THIRD PARTY:</b> <input type="checkbox"/> YES	<b>EST. TIME ON SITE:</b> 0.5	<b>REIMB. NUMBER:</b>	<b>PTS TASK ID:</b> 2E30990B9B2E422694DEA86494A974C1		
<b>PREFLIGHT NOTES</b>						
<b>REVIEWER:</b>					<b>DATE:</b>	
<b>COMMENTS:</b>					<b>CHECK ONE:</b> <input type="checkbox"/> FLT CK REQ <input type="checkbox"/> NFCR <input type="checkbox"/> REJECT	
					<b>YES</b>	<b>NO</b>
					<b>CPV COMPLETE?</b> <input checked="" type="checkbox"/> X <input type="checkbox"/>	
<b>PROCEDURE RESULTS</b>						
<b>INSPECTION DATE:</b> 01/17/2025	<b>CREW #:</b> VN364	<b>N #:</b>	<b>INSTRUMENT PROCEDURE STATUS:</b> <input checked="" type="checkbox"/> SAT <input type="checkbox"/> SAT W/CHANGES <input type="checkbox"/> UNSAT		<b>ARINC CODING:</b> <input checked="" type="checkbox"/> SAT <input type="checkbox"/> SAT/GOLD <input type="checkbox"/> UNSAT	
<b>FLIGHT INSPECTOR SIGNATURE:</b> kevin riese @ 01/17/2025 07:23			<b>PRINTED NAME:</b> RIESE, KEVIN JOHN			<b>NOTAM INITIATED?</b> <input type="checkbox"/> YES <input checked="" type="checkbox"/> NO
<b>FLIGHT INSPECTOR REMARKS:</b> ADDED KSPG, KCLW, KTPF TO AIRPORTS SERVED. ADDITIONAL CHARTING NOTES UPDATED. TABLE TOP REVIEW.						
<b>DME/DME STATUS:</b> <input type="checkbox"/> SAT <input type="checkbox"/> UNSAT	<b>SPECIALIST SIGNATURE:</b>				<b>PRINTED NAME:</b>	
<b>SPECIALIST REMARKS:</b>						
<b>IN-FLIGHT OBSTACLE REPORT</b>						
<b>OBSTRUCTION ID #:</b>	<b>COORDINATES OR LOCATION:</b>	<b>GNSS ALTITUDE (MSL):</b>	<b>BAROMETRIC ALTITUDE (MSL):</b>	<b>HEIGHT ABOVE GROUND LEVEL:</b>		

(BANGZ.BANGZ1) 22139

OLD

AL-625 (FAA)

Transition Routes

BANGZ ONE ARRIVAL (RNAV)

ST PETERSBURG-CLEARWATER, FLORIDA

RNAV 1 - DME/DME/IRU or GPS.

RADAR required.

TAMPA APP CON

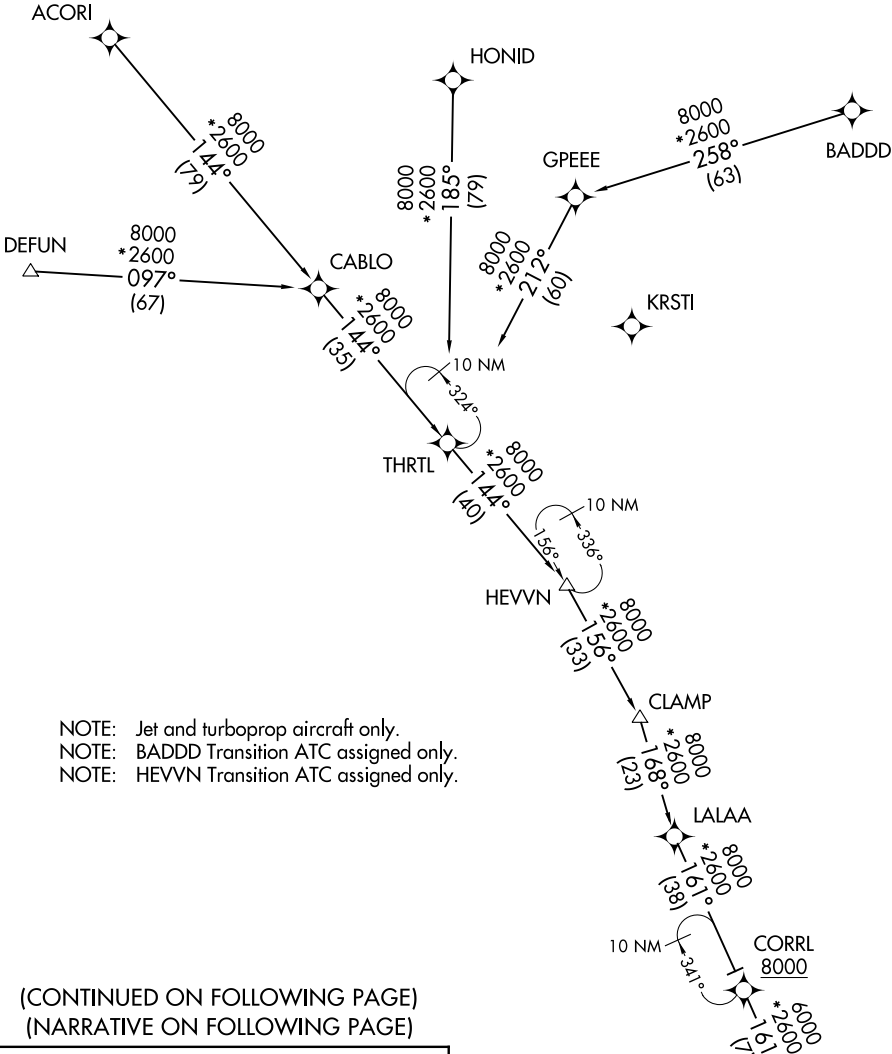
118.8 239.3

PIE ATIS

134.5

SRQ ATIS

124.375



ACORI TRANSITION (ACORI.BANGZ1)  
BADDD TRANSITION (BADDD.BANGZ1)  
DEFUN TRANSITION (DEFUN.BANGZ1)  
HEVVN TRANSITION (HEVVN.BANGZ1)  
HONID TRANSITION (HONID.BANGZ1)

NOTE: Chart not to scale.

See following page  
for arrival routes.

BANGZ ONE ARRIVAL (RNAV)

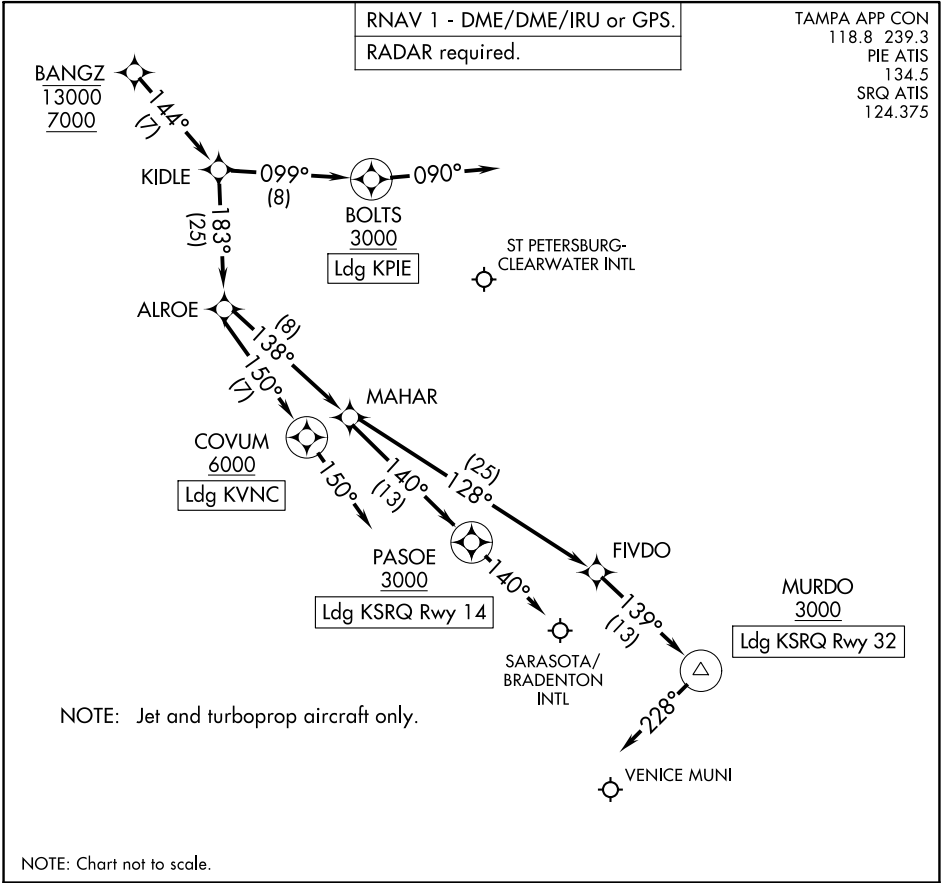
(BANGZ.BANGZ1) 19MAY22

Transition Routes

ST PETERSBURG-CLEARWATER, FLORIDA

SE-3, 19 MAY 2022 to 16 JUN 2022

SE-3, 19 MAY 2022 to 16 JUN 2022



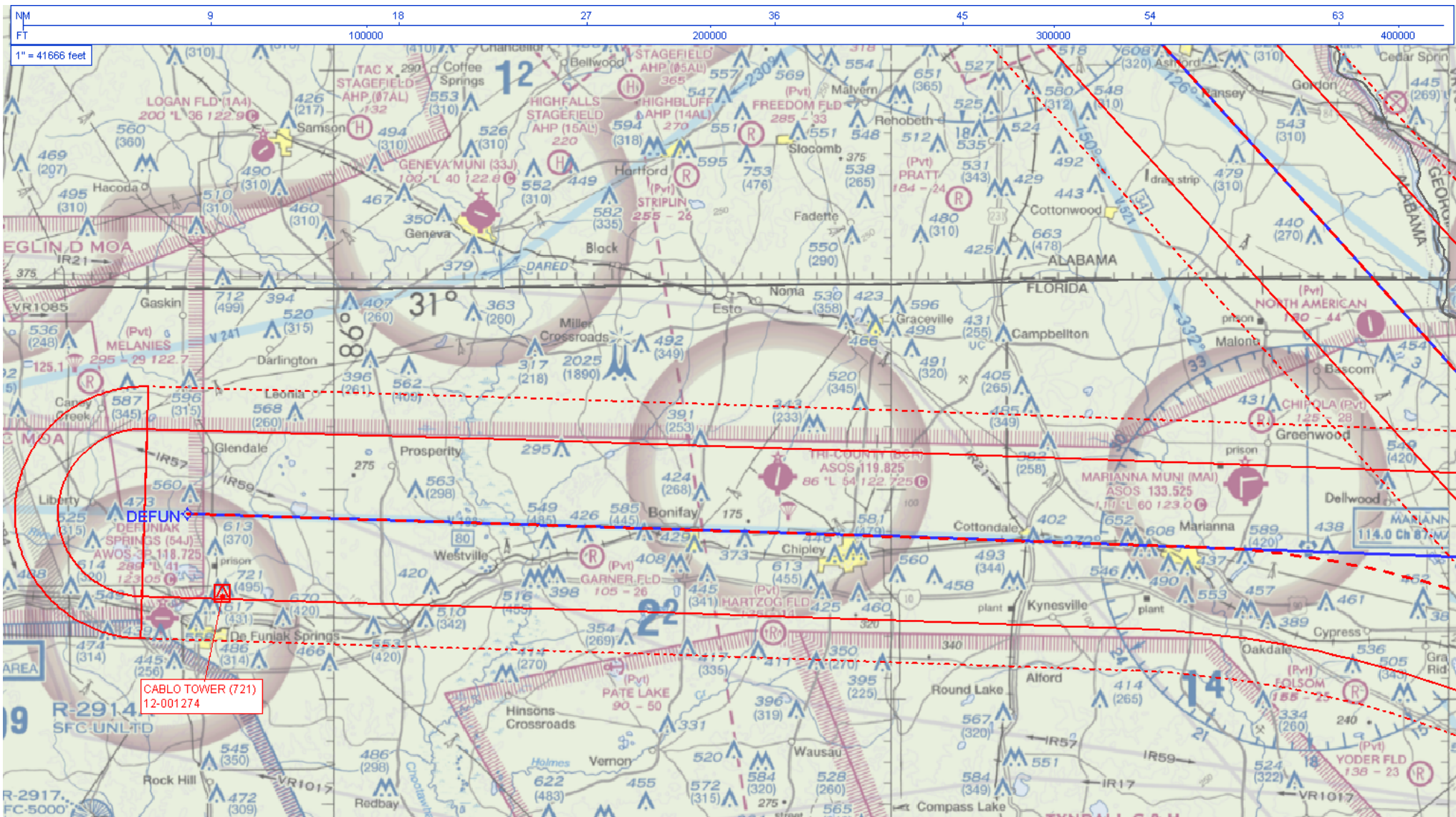
ARRIVAL ROUTE DESCRIPTION

LANDING KSRQ RUNWAY 14: From BANGZ on track 144° to KIDLE, then on track 183° to ALROE, then on track 138° to MAHAR, then on track 140° to cross PASOE at or above 3000, then on heading 140° or as assigned by ATC. Expect RADAR vectors to final approach course.

LANDING KSRQ RUNWAY 32: From BANGZ on track 144° to KIDLE, then on track 183° to ALROE, then on track 138° to MAHAR, then on track 128° to FIVDO, then on track 139° to cross MURDO at or above 3000, then on heading 228° or as assigned by ATC. Expect RADAR vectors to final approach course.

LANDING KPIE: From BANGZ on track 144° to KIDLE, then on track 099° to cross BOLTS at or above 3000, then on heading 090° or as assigned by ATC. Expect RADAR vectors to final approach course.

LANDING KVNC: From BANGZ on track 144° to KIDLE, then on track 183° to ALROE, then on track 150° to cross COVUM at or above 6000, then on track 150°. Expect RADAR vectors to final approach course.

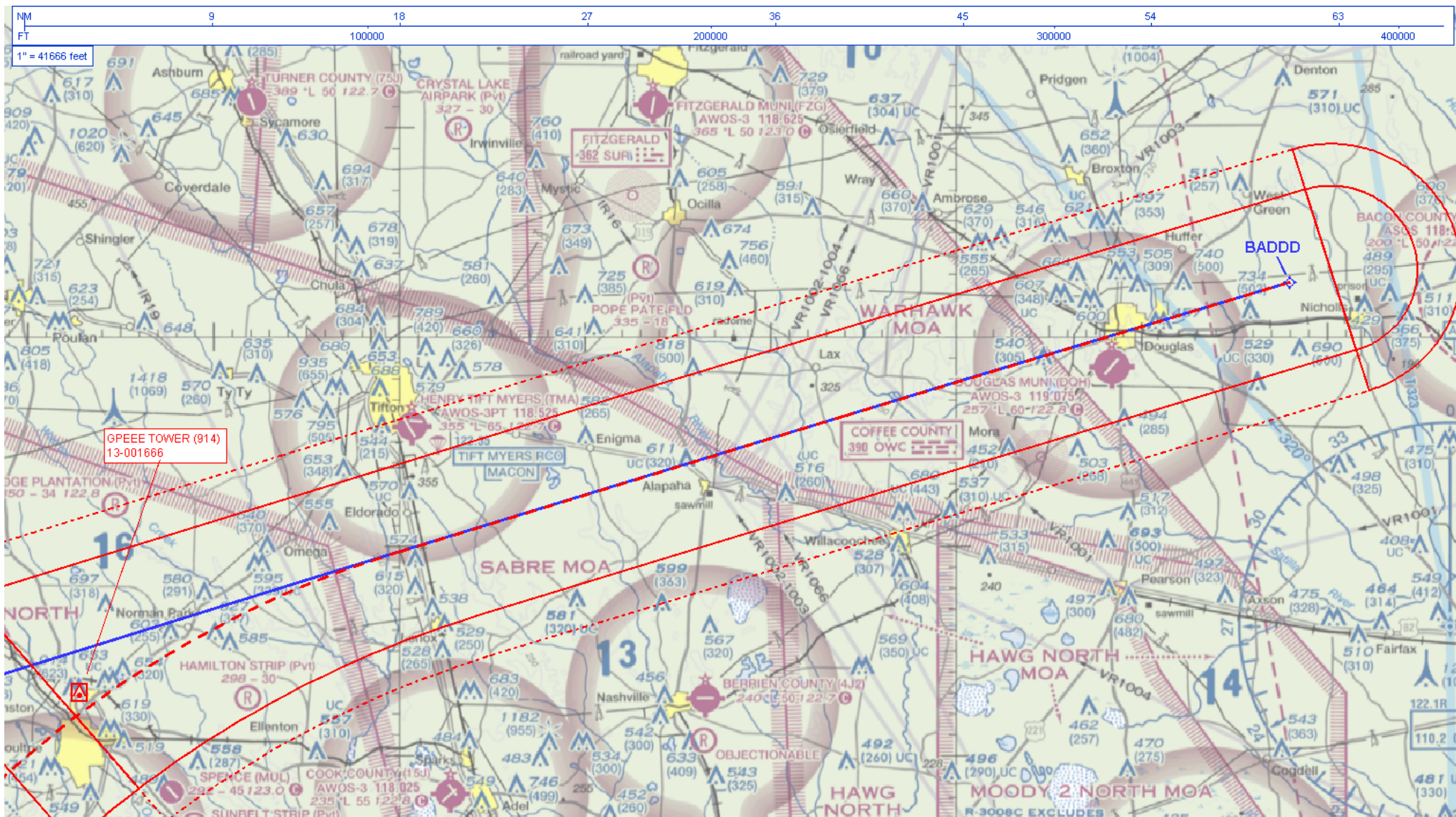


BANGZ (RNAV)



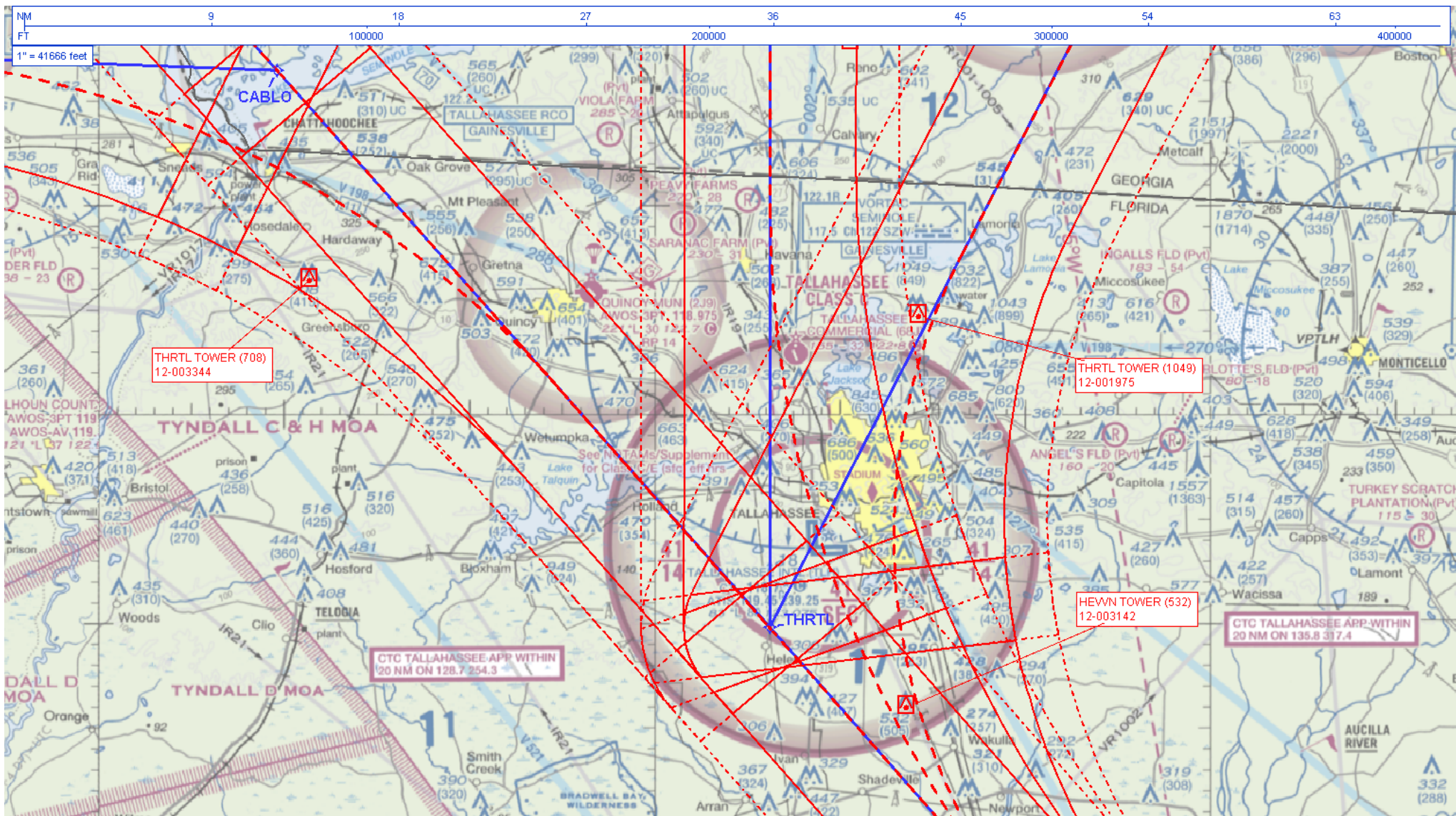






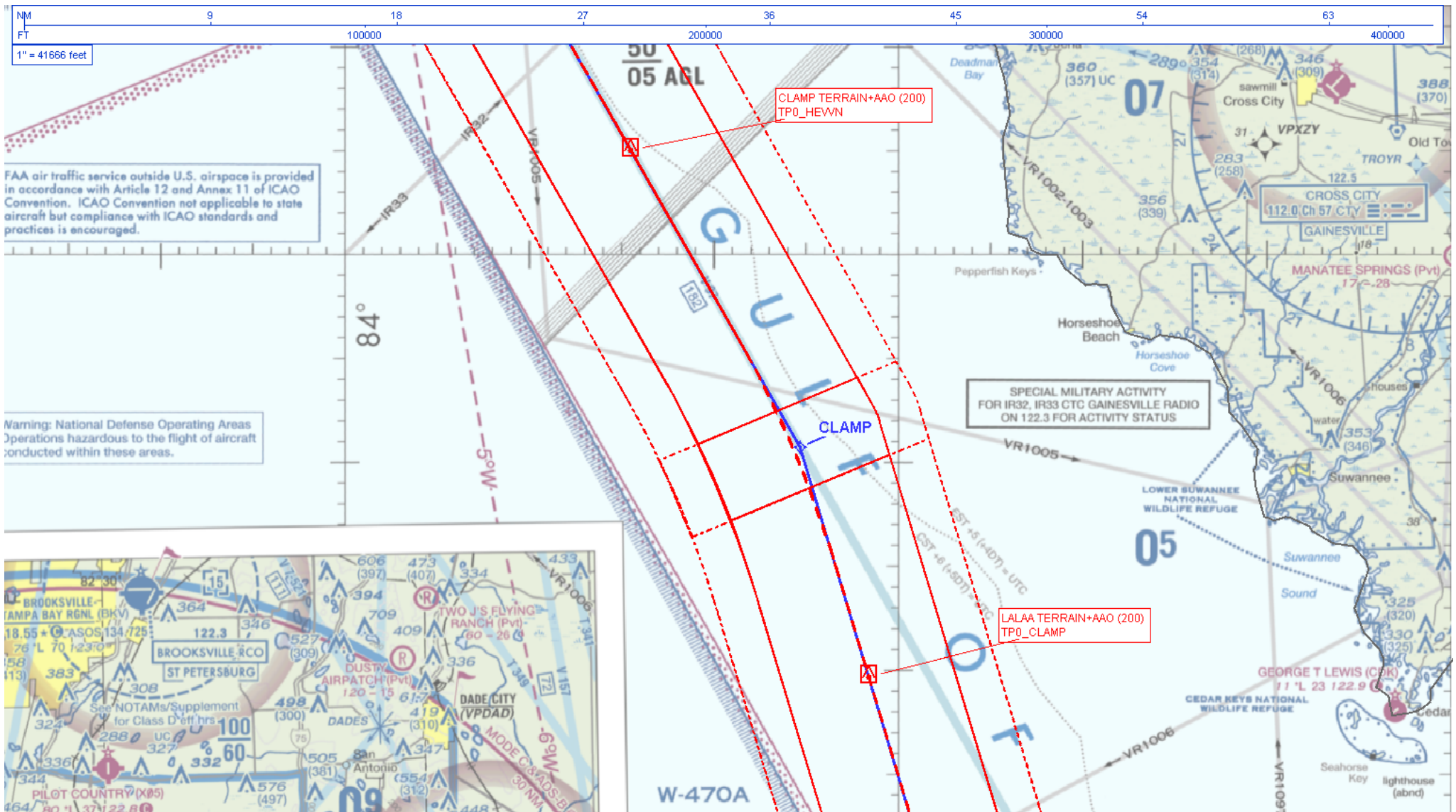
BANGZ (RNAV)



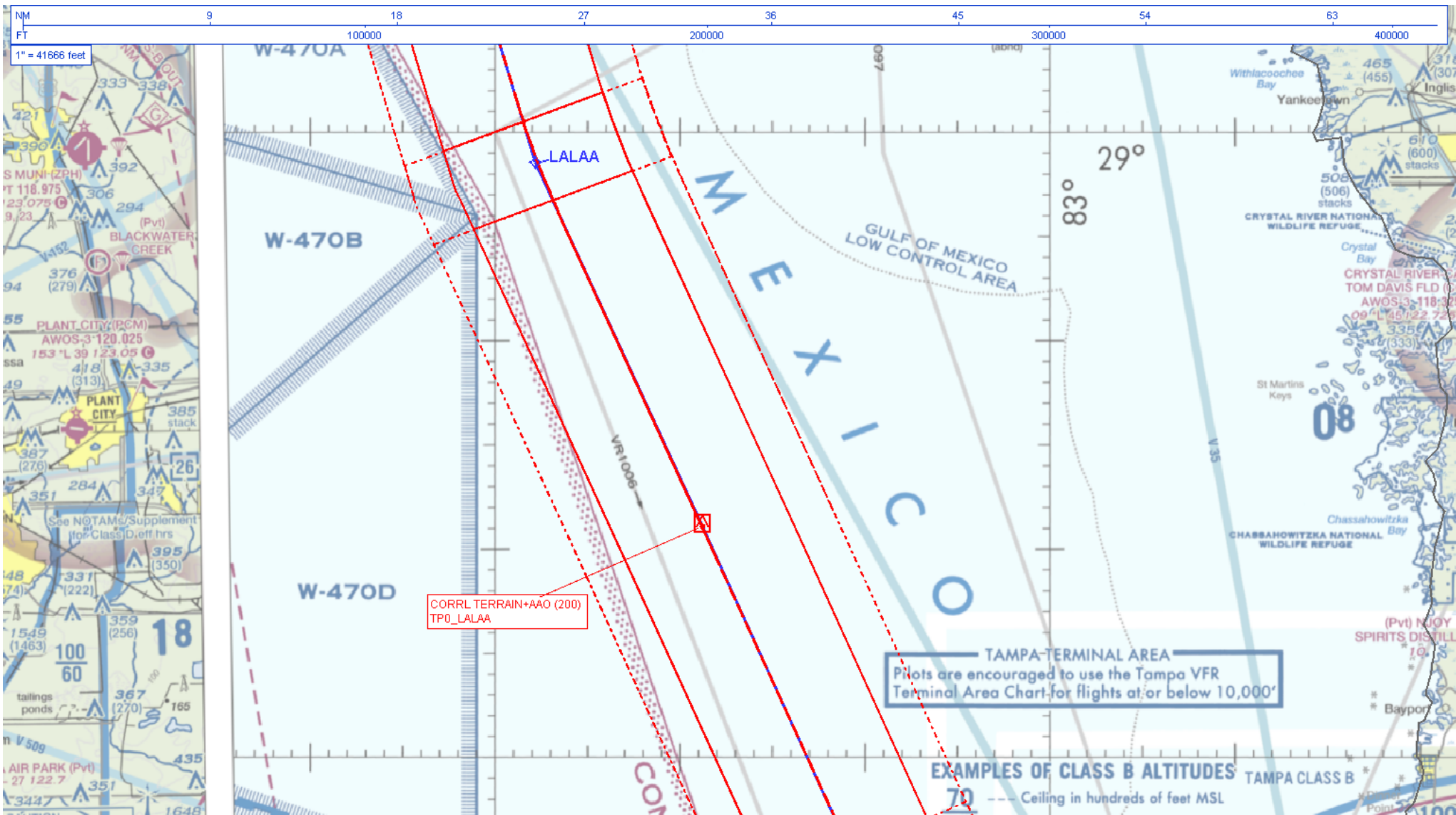


BANGZ (RNAV)

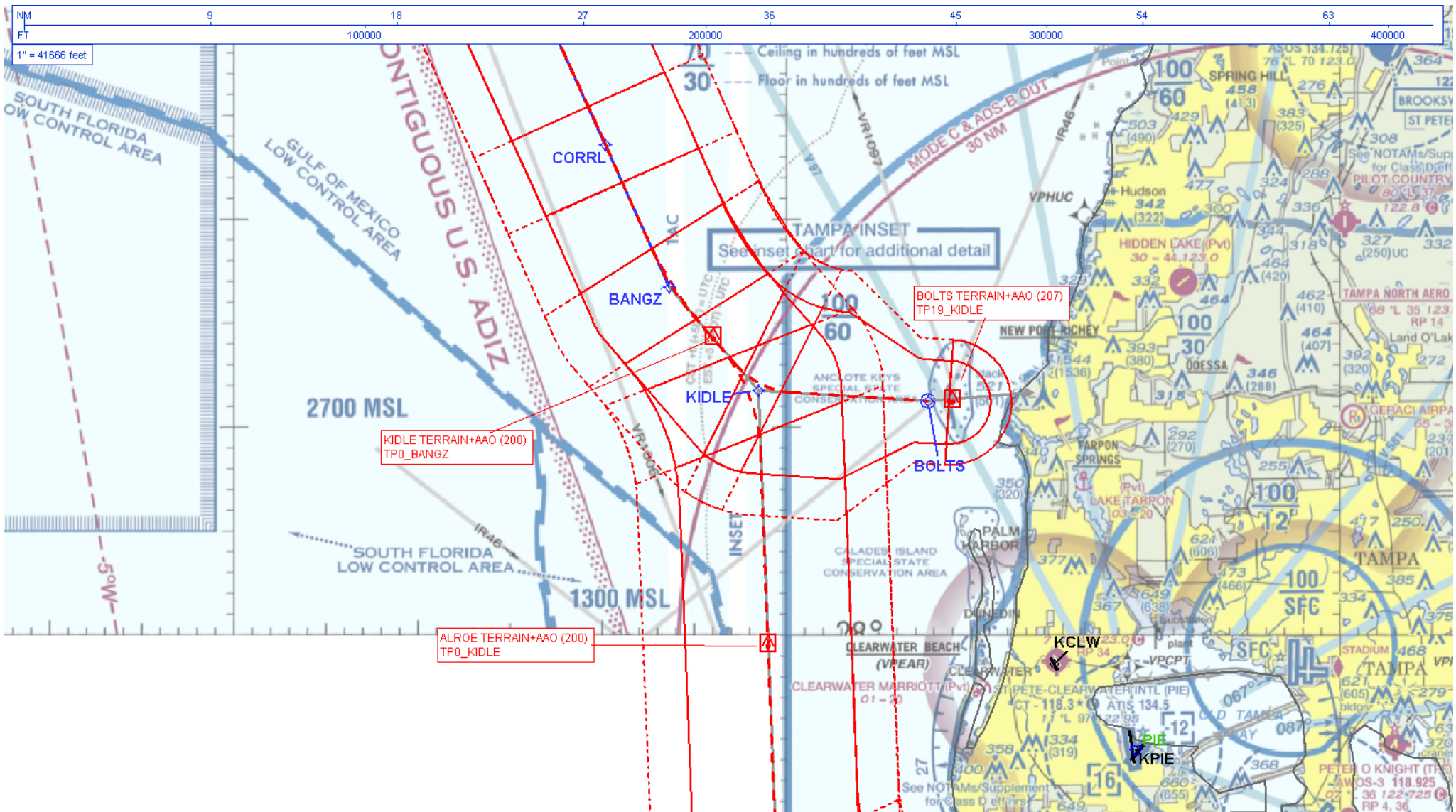




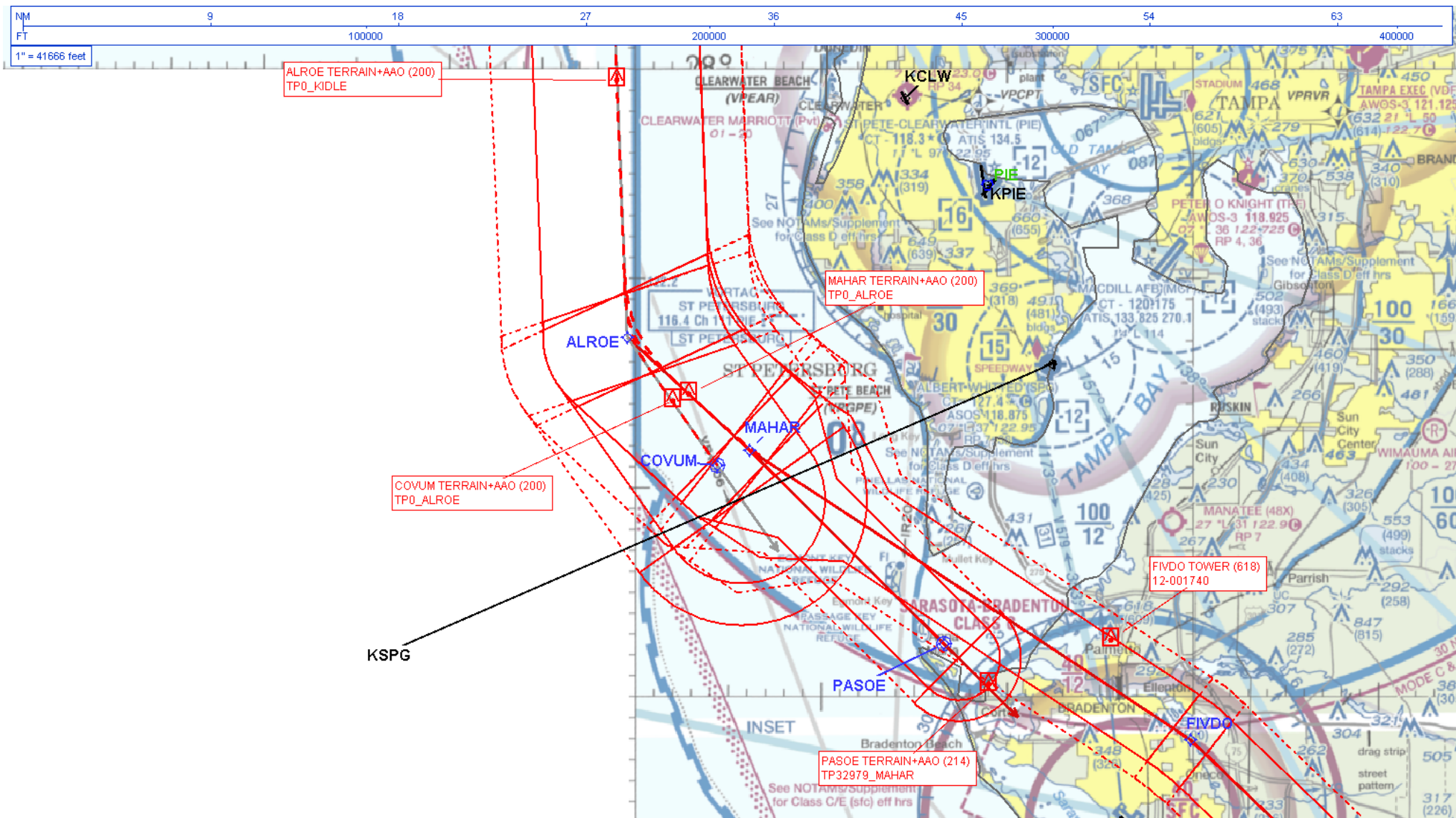
BANGZ (RNAV)



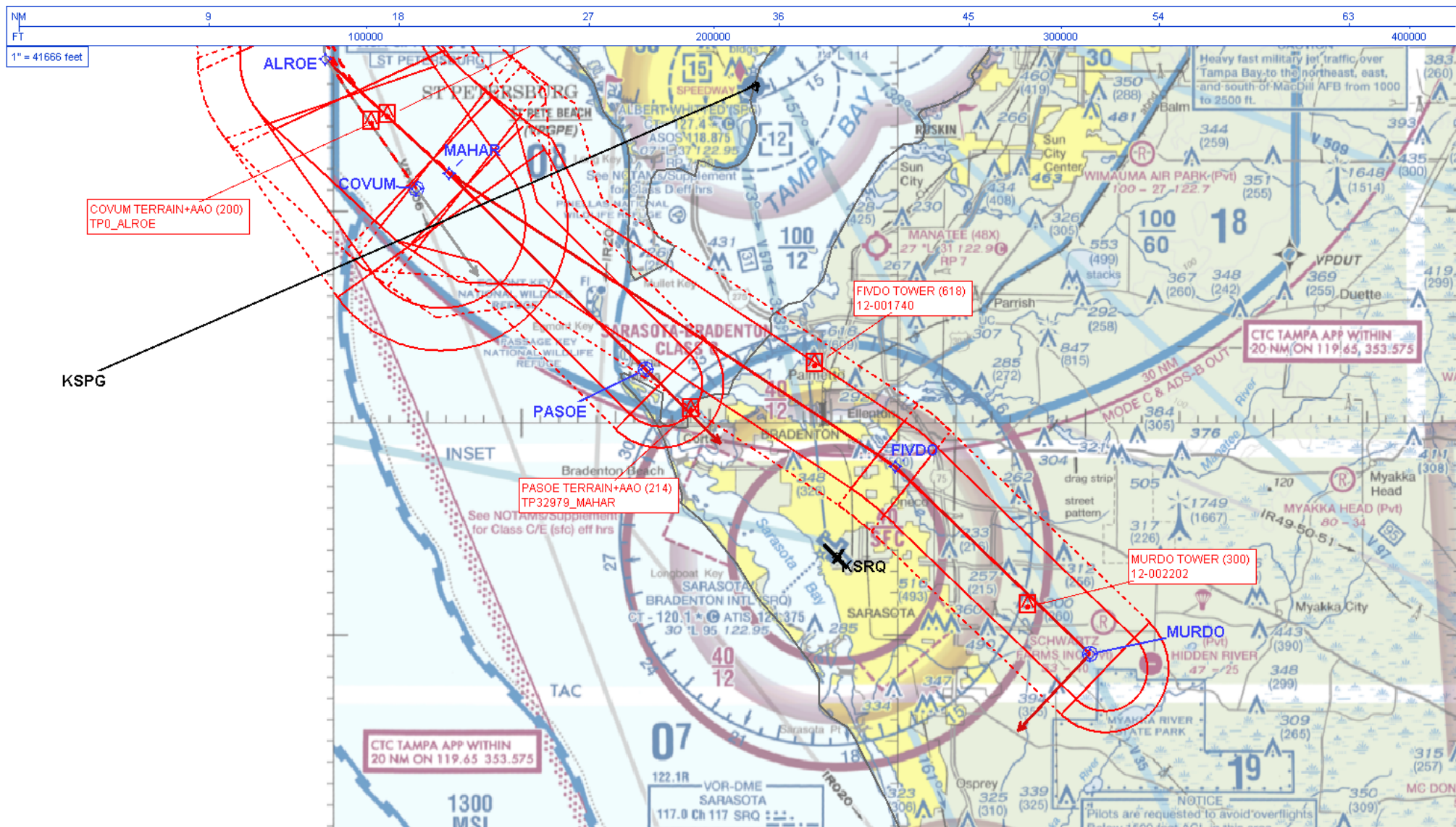
BANGZ (RNAV)



BANGZ (RNAV)



BANGZ (RNAV)



BANGZ (RNAV)

