

FEDERAL AVIATION ADMINISTRATION  
FLIGHT STANDARDS SERVICE  
STANDARD TERMINAL ARRIVAL (STAR)

Bearings, headings, courses, tracks and radials are magnetic. Elevations and altitudes are in feet, MSL. Altitudes are minimum altitudes unless otherwise indicated.  
Ceilings are in feet above airport elevation. Distances are in nautical miles. Visibilities are in statute miles or feet RVR unless otherwise indicated.

Arrival Name	Number	STAR Computer Code	Superseded Number	Dated	Effective Date
<b>DENNA (RNAV)</b>	<b>ONE</b>	<b>PAWLN.DENNA1</b>	<b>NONE</b>		

**TRANSITION ROUTES:**

Transition Name	Transition Computer Codes	From FIX/NAVAID	To FIX/NAVAID	Course	Distance	MEA	MOCA	MAA	Crossing Altitudes / Fixes
ALBANY	ALB.DENNA1	ALB VORTAC	ALB VORTAC						
			ATHOS	193.76	30.00	9000	3700		
			PAWLN	174.65	30.14	5000	3700		
DANZI	DANZI.DENNA1	DANZI	DANZI						
			PETER	097.99	19.07	7000	6100		
			CYPER	129.65	12.83	6100	6100		
			TRESA	136.79	24.55	6100	6100		
			PAWLN	137.09	11.81	5000	3700		
RAHKS	RAHKS.DENNA1	RAHKS	RAHKS						
			PETER	129.18	35.22	7000	6100		
			CYPER	129.65	12.83	6100	6100		
			TRESA	136.79	24.55	6100	6100		
			PAWLN	137.09	11.81	5000	3700		

**ARRIVAL ROUTE DESCRIPTION:**

LANDING ALL AIRPORTS: FROM PAWLN ON TRACK 172.86/7.87 TO DEEDE, THEN ON TRACK 172.94/6.88 TO LOVES, THEN ON TRACK 156.95/22.63 TO DENNA, THEN ON TRACK 156.95. EXPECT RADAR VECTORS TO FINAL APPROACH COURSE.

**PBN REQUIREMENT NOTES:**

RNAV 1 - DME/DME/IRU OR GPS

**EQUIPMENT REQUIREMENT NOTES:**

RADAR REQUIRED

**PROCEDURAL DATA NOTES:**

**FIXES AND/OR HOLDING PATTERNS:**

CHART HOLDING AT LOVES: HOLD NW, LT, 156.95 INBOUND, 4 NM LEGS.

**COMMUNICATIONS:**

FEDERAL AVIATION ADMINISTRATION  
FLIGHT STANDARDS SERVICE  
STANDARD TERMINAL ARRIVAL (STAR)

Bearings, headings, courses, tracks and radials are magnetic. Elevations and altitudes are in feet, MSL. Altitudes are minimum altitudes unless otherwise indicated.  
Ceilings are in feet above airport elevation. Distances are in nautical miles. Visibilities are in statute miles or feet RVR unless otherwise indicated.

Arrival Name	Number	STAR Computer Code	Superseded Number	Dated	Effective Date
DENNA (RNAV)	ONE	PAWLN.DENNA1	NONE		

**AIRPORTS SERVED:**

<u>AIRPORT ID</u>	<u>CITY</u>	<u>STATE</u>
BDR	BRIDGEPORT	CT
HVN	NEW HAVEN	CT
OXC	OXFORD	CT

**LOST COMMUNICATIONS PREFERENCES:**

**REMARKS:**

THE ENVIRONMENTAL REVIEW UNDER ORDER 1050.1 (LATEST EDITION) AND THE NOISE SCREENING HAVE BEEN ACCOMPLISHED.  
LOWEST ASSIGNED ATC ALTITUDE AT DENNA, 3000.  
16 DEGREE BANK ANGLE EXCEPTION APPLIED DANZI TO PETER SEGMENT IAW AFS MEMO DATED 1-31-23.  
HOLDING AT LOVES FIX: AIRSPACE BUFFER 300 UTILIZED PLUS 500 FT ROC REDUCTION.

**ADDITIONAL FLIGHT DATA:**

DME/DME ASSESSMENT: SAT (RNP 2.0)  
MAG VAR: BDR 13W/1980  
CHART AT DENNA TERMINUS: LDG BDR/HVN/OXC

**FLIGHT INSPECTED BY:**

**ORGANIZATION:**   **DATE:**

Flight Inspected Signature: \_\_\_\_\_

**DEVELOPED BY:**

CASIMIR TABAKA (HOPE DENTON)

AJV-A432

02/27/2025

Developed By Signature: \_\_\_\_\_

**APPROVED BY:**

CASIMIR TABAKA

AJV-A432

Approved By Signature: \_\_\_\_\_

**CHANGES:**

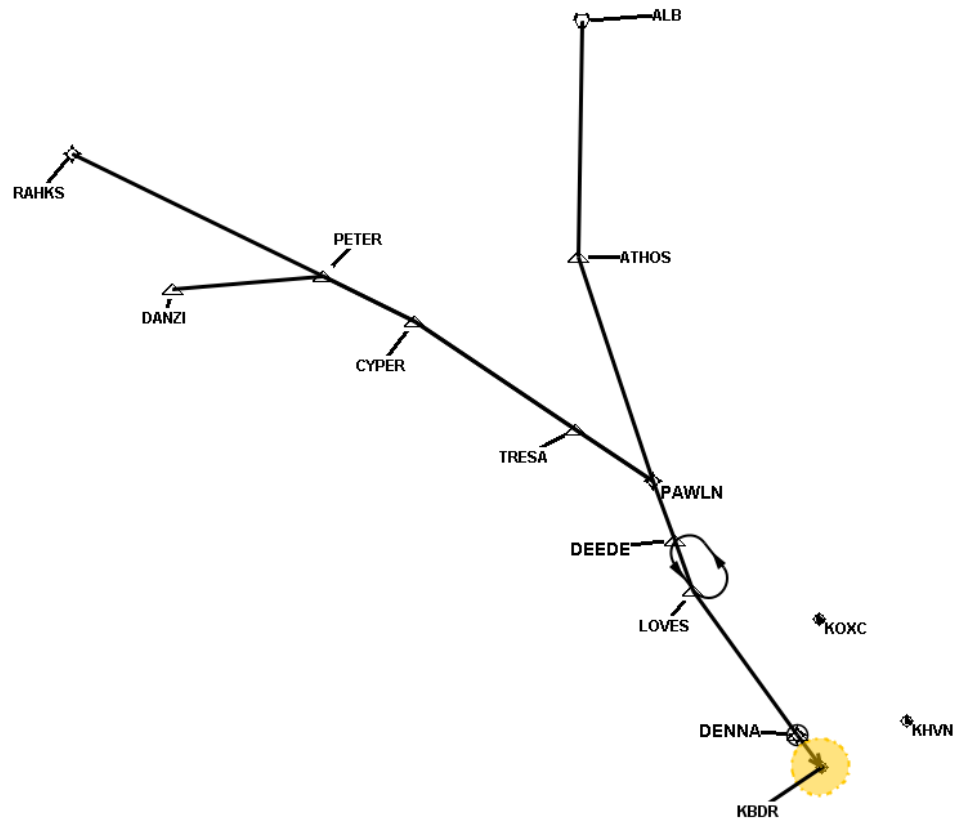
**REASONS:**

FEDERAL AVIATION ADMINISTRATION  
FLIGHT STANDARDS SERVICE  
STANDARD TERMINAL ARRIVAL (STAR)

Bearings, headings, courses, tracks and radials are magnetic. Elevations and altitudes are in feet, MSL. Altitudes are minimum altitudes unless otherwise indicated.  
Ceilings are in feet above airport elevation. Distances are in nautical miles. Visibilities are in statute miles or feet RVR unless otherwise indicated.

Arrival Name	Number	STAR Computer Code	Superseded Number	Dated	Effective Date
<b>DENNA (RNAV)</b>	<b>ONE</b>	<b>PAWLN.DENNA1</b>	<b>NONE</b>		

Graphic Depiction 1

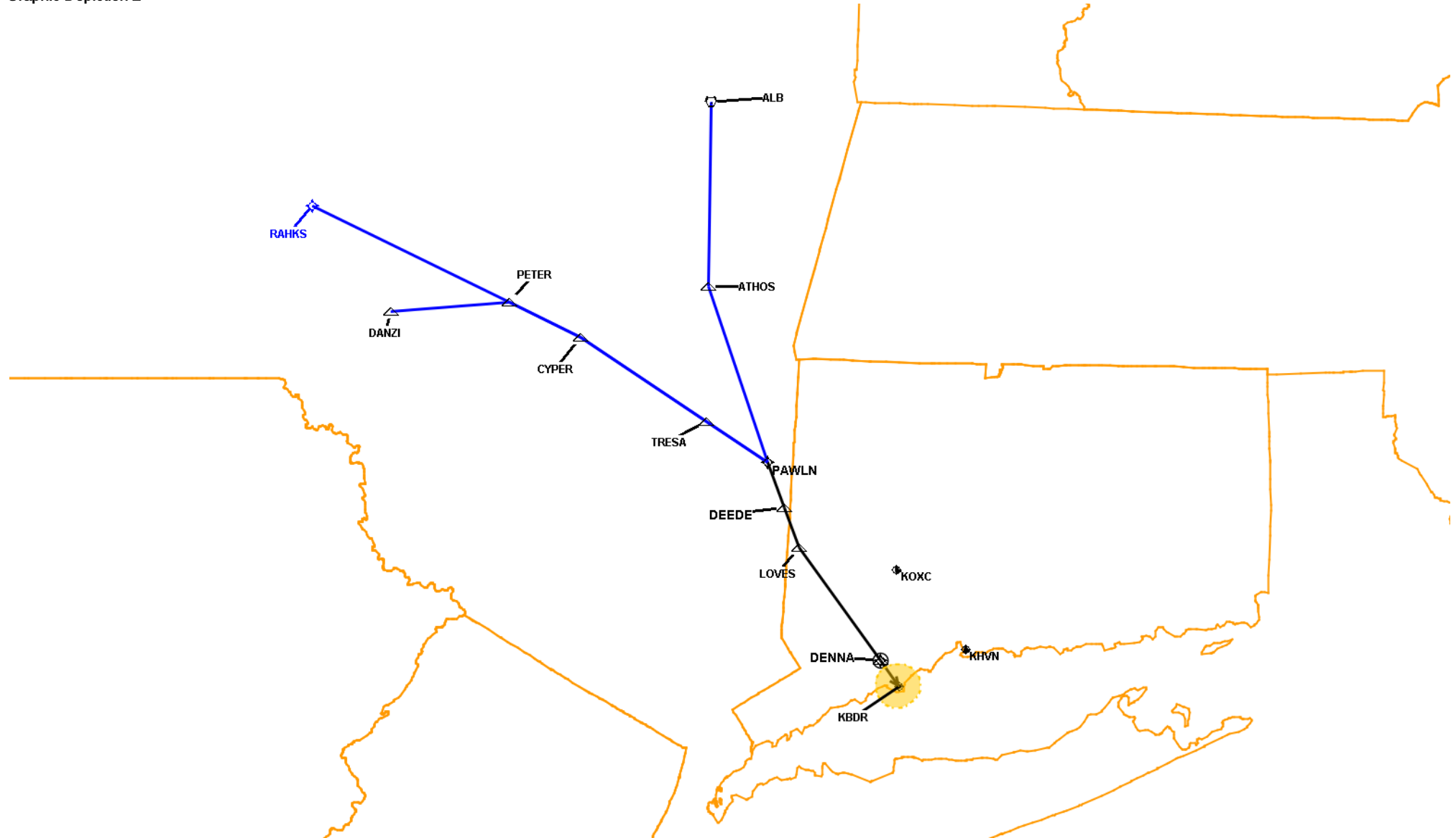


FEDERAL AVIATION ADMINISTRATION  
FLIGHT STANDARDS SERVICE  
STANDARD TERMINAL ARRIVAL (STAR)

Bearings, headings, courses, tracks and radials are magnetic. Elevations and altitudes are in feet, MSL. Altitudes are minimum altitudes unless otherwise indicated.  
Ceilings are in feet above airport elevation. Distances are in nautical miles. Visibilities are in statute miles or feet RVR unless otherwise indicated.

Arrival Name	Number	STAR Computer Code	Superseded Number	Dated	Effective Date
DENNA (RNAV)	ONE	PAWLN.DENNA1	NONE		

Graphic Depiction 2



FEDERAL AVIATION ADMINISTRATION  
FLIGHT STANDARDS SERVICE  
STAR (DATA RECORD)

Arrival Name DENNA (RNAV)		Number ONE		STAR Computer Code PAWLN.DENNA1			Superseded Number NONE		Dated	Effective Date
<u>FIX/NAVAID</u>	<u>LAT/LONG</u>	<u>C</u>	<u>FO/FB</u>	<u>LEG TYPE</u>	<u>TC</u>	<u>DIST (NM)</u>	<u>ALTITUDE</u>	<u>SPEED</u>	<u>REMARKS</u>	
En Route Transition										
ALB VORTAC	424450.21N / 0734811.46W	Y		IF					ALB.DENNA1	
ATHOS	421449.49N / 0734843.56W	Y	FB	TF	180.76	30.00				
PAWLN	414611.51N / 0733602.64W	Y	FB	TF	161.65	30.14				
En Route Transition										
DANZI	421041.86N / 0745724.19W	Y		IF					DANZI.DENNA1	
PETER	421218.93N / 0743150.25W	Y	FB	TF	084.99	19.07				
CYPER	420632.37N / 0741625.52W	Y	FB	TF	116.65	12.83				
TRESA	415249.61N / 0734906.80W	Y	FB	TF	123.79	24.55				
PAWLN	414611.51N / 0733602.64W	Y	FB	TF	124.09	11.81				
En Route Transition										
RAHKS	422759.28N / 0751421.68W	Y		IF					RAHKS.DENNA1	
PETER	421218.93N / 0743150.25W	Y	FB	TF	116.18	35.22				
CYPER	420632.37N / 0741625.52W	Y	FB	TF	116.65	12.83				
TRESA	415249.61N / 0734906.80W	Y	FB	TF	123.79	24.55				
PAWLN	414611.51N / 0733602.64W	Y	FB	TF	124.09	11.81				
Common Route										
PAWLN	414611.51N / 0733602.64W	Y		IF					PAWLN.DENNA1	
DEEDE	413847.81N / 0733225.74W	Y	FB	TF	159.86	07.87				
LOVES	413219.64N / 0732917.14W	Y	FB	TF	159.94	06.88				
DENNA	411359.79N / 0731137.94W	Y	FO	TF	143.95	22.63				
KBDR,KHVN,KOXC				FM	143.95					