

DME ESVs								
#	Name	Lat/Lon	MAGVAR	Range	Elevation [ft]	Frequency	Replaces	Status
1	CCC CCC	N40° 55' 46.6278", W072° 47' 55.8897"	13.0 W	130	84.7	114.55	CCC	
	Restriction:	Bearing [True]: 43.0° to 53.0° Bearing [Mag]: 56.0° to 66.0°				Distance: Beyond 39.0 NM Altitude: Below 99999.0 ft		
	ESV:	Bearing [True]: 318.0° to 328.0° Bearing [Mag]: 331.0° to 341.0°				Arc Distance: Out to 62.0 NM Altitude: 3900.0 to 14600.0 ft		
2	CFB [IFPA] CFB	N42° 09' 26.9653", W076° 08' 11.2978"	10.0 W	40	1583.1	112.2	CFB [IFPA]	
	ESV:	Bearing [True]: 83.0° to 93.0° Bearing [Mag]: 93.0° to 103.0°				Arc Distance: Out to 73.0 NM Altitude: 6900.0 to 19600.0 ft		
3	CTR [IFPA] CTR	N42° 17' 28.7470", W072° 56' 57.8190"	13.0 W	40	1600	115.1	CTR [IFPA]	
	ESV:	Bearing [True]: 299.0° to 310.0° Bearing [Mag]: 312.0° to 323.0°				Arc Distance: Out to 51.0 NM Altitude: 9800.0 to 19600.0 ft		
4	HUO [IFPA] 1 HUO	N41° 24' 34.8718", W074° 35' 29.7393"	11.0 W	130	1300.3	116.1	HUO [IFPA] 1	
	Restriction:	Bearing [True]: 204.0° to 214.0° Bearing [Mag]: 215.0° to 225.0°				Distance: Beyond 33.0 NM Altitude: Below 99999.0 ft		
	Restriction:	Bearing [True]: 26.0° to 37.0° Bearing [Mag]: 37.0° to 48.0°				Distance: Beyond 20.0 NM Altitude: Below 99999.0 ft		
	ESV:	Bearing [True]: 339.0° to 4.0° Bearing [Mag]: 350.0° to 15.0°				Arc Distance: Out to 53.0 NM Altitude: 6900.0 to 15900.0 ft		
5	HUO [IFPA] 2 HUO	N41° 24' 34.8718", W074° 35' 29.7393"	11.0 W	130	1300.3	116.1	HUO [IFPA] 2	
	Restriction:	Bearing [True]: 204.0° to 214.0° Bearing [Mag]: 215.0° to 225.0°				Distance: Beyond 33.0 NM Altitude: Below 99999.0 ft		
	Restriction:	Bearing [True]: 26.0° to 37.0° Bearing [Mag]: 37.0° to 48.0°				Distance: Beyond 20.0 NM Altitude: Below 99999.0 ft		
	ESV:	Bearing [True]: 44.0° to 59.0° Bearing [Mag]: 55.0° to 70.0°				Arc Distance: Out to 51.0 NM Altitude: 4900.0 to 15900.0 ft		
6	ESV LGA [IFPA] LGA	N40° 47' 01.3731", W073° 52' 06.9569"	12.0 W	40	10.9	113.1	ESV LGA [IFPA]	
	Restriction:	Bearing [True]: 233.0° to 268.0° Bearing [Mag]: 245.0° to 280.0°				Distance: Beyond 25.0 NM Altitude: Below 6000.0 ft		
	ESV:	Bearing [True]: 8.0° to 24.0° Bearing [Mag]: 20.0° to 36.0°				Arc Distance: Out to 61.0 NM Altitude: 3900.0 to 12100.0 ft		
7	UDT ESV PWL PWL	N41° 46' 11.1770", W073° 36' 01.9850"	12.0 W	40	1250	114.3	UDT ESV PWL	
	ESV:	Bearing [True]: 341.0° to 357.0° Bearing [Mag]: 353.0° to 9.0°				Arc Distance: Out to 62.0 NM Altitude: 9900.0 to 19300.0 ft		
8	UDT ESV PWL PWL	N41° 46' 11.1770", W073° 36' 01.9850"	12.0 W	40	1250	114.3	UDT ESV PWL	
	ESV:	Bearing [True]: 341.0° to 357.0° Bearing [Mag]: 353.0° to 9.0°				Arc Distance: Out to 62.0 NM Altitude: 9900.0 to 19300.0 ft		

DME DME Assessment Results for DENNA1 path ALB_PAWLN

Results Summary

Flyability:	Completed
DME/DME:	Completed - No Critical DMEs
Name:	David C-CTR Cook
Project File:	C:\Users\David C-CTR Cook\Documents\TARGETS WORK\DME-DME WORK\10-2-2025 PUBLICATION\KBDR DEENA1 (RNAV) STAR\KBDR DENNA1 (RNAV) STAR_20241113_DME-DME.tgs
Output File:	C:\Users\David C-CTR Cook\Documents\TARGETS WORK\DME-DME WORK\10-2-2025 PUBLICATION\KBDR DEENA1 (RNAV) STAR\KBDR [IFPA] DENNA1 20241118_0746 EST\ALB_PAWLN\KBDR DENNA1 RNAV STAR ALB PAWLN 20241118_0746 EST.pdf
Procedure Name:	DENNA1
Software: DmeDmePlugin:	7.4.0
Date/Time:	11/18/2024 07:46 EST
Databases:	MITRE 3DEP 3 arcsec

Failures

No Failures

Warnings

No Warnings

Informational

No Informational

Notes For Flight Check

None

Flight Plan

Name	Type	Lat/Lon	Altitude (ft)	VNAV Mode	Ground Speed (kts)	Turn Type	Leg Type
ALB	WP	N42° 44' 50.2097", W073° 48' 11.4623"	11000	VNAV	200	FLY_BY	TF
ATHOS	WP	N42° 14' 49.4900", W073° 48' 43.5600"	9000	VNAV	200	FLY_BY	TF
PAWLN	WP	N41° 46' 11.5100", W073° 36' 02.6400"	5000	VNAV	200	FLY_BY	TF

Flyability

Flight Type:	RNAV_STAR
Selected Airport:	KBDR [IFPA]
Climb Gradient:	None assigned
Speeds:	200 Ground Speed to 11000 FT
	240 Ground Speed to 18000 FT
	260 Ground Speed to 24000 FT
	340 Ground Speed above 24000 FT
Descent During a Turn:	Allowed
VNAV Mode:	Flight Plan

DME DME Assessment Results for DENNA1 path ALB_PAWLN

DME/DME	
RNP:	RNP 2
Flight Mode:	Manual
Line of Sight (DTED Level 0 Max):	Evaluated
Inertial Drift:	Enabled
Initial Drift:	0.558 NM
INS Drift Rate:	8.0 NM/Hour
Range Mode:	OSV
RNP Edges:	Evaluated
Min DME Range:	3.0 NM
DME Types:	DME, VOR-DME, VORTAC, TACAN
DME Include Angles:	30 to 150
Critical DMEs:	Allowed
DoD Facilities:	Not included
Foreign Facilities:	Not included
High DMEs:	Included
Low DMEs:	Included
Terminal DMEs:	Included
Flight Check DMEs:	Not selected
Higher Altitudes:	Not Evaluated
Near Maximum Altitude:	Not Evaluated
Automatic ESVs:	Enabled
Disabled DMEs:	None

DME/DME (Continued)										
DMEs Used										
#	Name	Lat/Lon	MAGVAR	Range	Type	Source	Critical	Status	Time	Distance
1	CTR	N42° 17' 28.7470", W072° 56' 57.8190"	13.0 W	40	L		NO	Enabled	4.4 %	4.4 %
2	IGN	N41° 39' 55.6258", W073° 49' 20.0613"	12.0 W	40	L		NO	Enabled	8.1 %	8.1 %
3	MPV	N44° 05' 07.7171", W072° 26' 57.7073"	16.0 W	130	DH		NO	Enabled	1.7 %	1.7 %
4	PWL	N41° 46' 11.1770", W073° 36' 01.9850"	12.0 W	40	L		NO	Enabled	18.5 %	18.5 %
5	ALB	N42° 44' 50.2097", W073° 48' 11.4623"	13.0 W	40	L		NO	Enabled	38 %	38 %
6	CAM	N42° 59' 39.4398", W073° 20' 38.4681"	14.0 W	40	L		NO	Enabled	5.7 %	5.7 %
7	DNY	N42° 10' 41.8100", W074° 57' 24.9860"	11.0 W	40	L		NO	Enabled	42 %	42 %

Flight Check DME Selection						
Distance [NM]	Selected DMEs					Alternate
0.0	CTR	CAM	DNY	PWL	MPV	
1.1	CTR	CAM	DNY	PWL		
2.2	CTR	CAM	DNY			
2.4						
7.2	DNY	ALB				
15.8	DNY	ALB	CAM			
16.9	DNY	ALB				
21.0	DNY	PWL	ALB			
25.1	DNY	PWL	IGN	ALB		
29.7	CTR	IGN	ALB	DNY	PWL	
30.1						

DME DME Assessment Results for DENNA1 path ALB_PAWLN

Inertial Drift Segments			
#	Start Location	End Location	Length [NM]
1	N42° 42' 23.7616", W073° 48' 14.0920"	N42° 37' 40.8475", W073° 48' 19.1625"	4.7142
2	N42° 14' 46.3276", W073° 48' 42.1482"	N41° 46' 11.5100", W073° 36' 02.6400"	30.0866

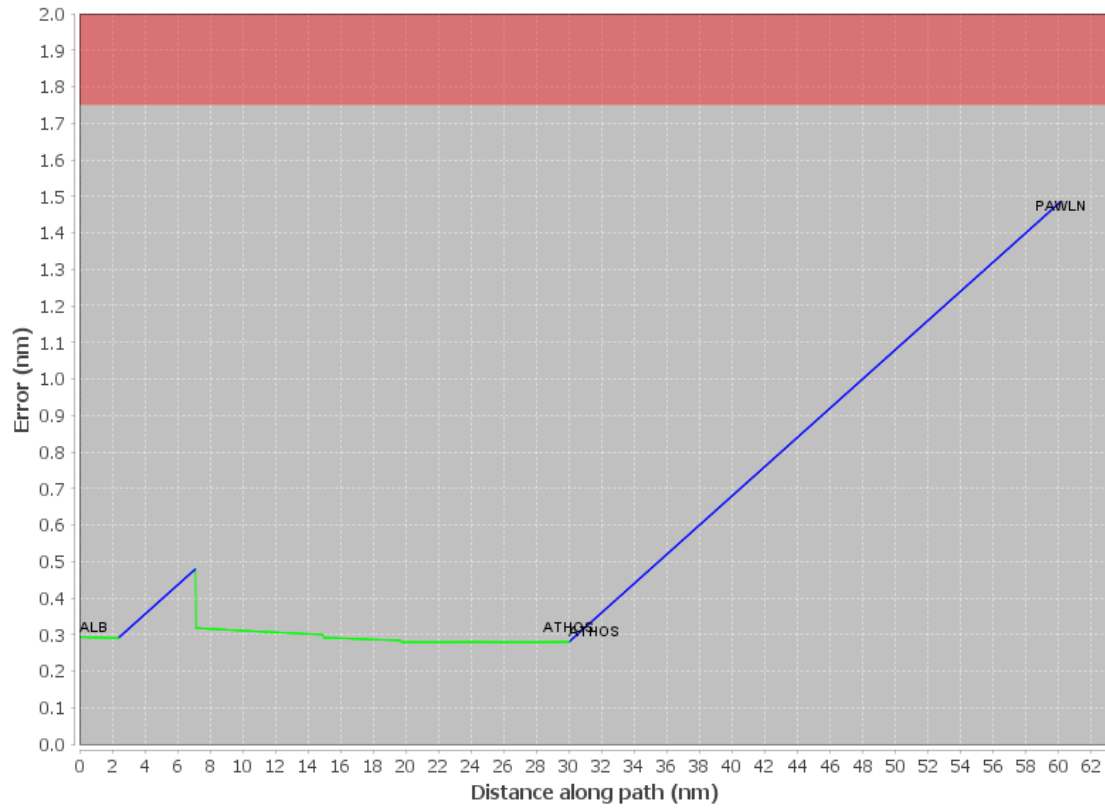
Available DMEs by Waypoints			
Waypoint Before	Waypoint After	DME List	Suggested DMEs
ALB	ATHOS	CTR, IGN, MPV, PWL, ALB, CAM, DNY	
ATHOS	PAWLN	CTR, IGN, PWL, ALB, DNY	

User Data Files	
#	File Name
1	New Analysis.udt
2	UserDMEsKBAF [IFPA] STELA1 RNAV STAR_20240716_1429 EDT.udt

User DMEs								
#	Name	Lat/Lon	MAGVAR	Range	Elevation [ft]	Frequency	Replaces	Status
1	HUO [IFPA] 2 HUO	N41° 24' 34.8718", W074° 35' 29.7393"	11.0 W	130	1300.3	116.1	HUO [IFPA] 2	
	ESV:	Bearing [True]: 44.0° to 59.0° Bearing [Mag]: 55.0° to 70.0°				Arc Distance: Out to 51.0 NM Altitude: 4900.0 to 15900.0 ft		
2	UDT ESV PWL PWL	N41° 46' 11.1770", W073° 36' 01.9850"	12.0 W	40	1250	114.3	UDT ESV PWL	
	ESV:	Bearing [True]: 341.0° to 357.0° Bearing [Mag]: 353.0° to 9.0°				Arc Distance: Out to 62.0 NM Altitude: 9900.0 to 19300.0 ft		
3	UDT ESV PWL PWL	N41° 46' 11.1770", W073° 36' 01.9850"	12.0 W	40	1250	114.3	UDT ESV PWL	
	ESV:	Bearing [True]: 341.0° to 357.0° Bearing [Mag]: 353.0° to 9.0°				Arc Distance: Out to 62.0 NM Altitude: 9900.0 to 19300.0 ft		
4	ESV LGA [IFPA] LGA	N40° 47' 01.3731", W073° 52' 06.9569"	12.0 W	40	10.9	113.1	ESV LGA [IFPA]	
	ESV:	Bearing [True]: 8.0° to 24.0° Bearing [Mag]: 20.0° to 36.0°				Arc Distance: Out to 61.0 NM Altitude: 3900.0 to 12100.0 ft		
5	HUO [IFPA] 1 HUO	N41° 24' 34.8718", W074° 35' 29.7393"	11.0 W	130	1300.3	116.1	HUO [IFPA] 1	
	ESV:	Bearing [True]: 339.0° to 4.0° Bearing [Mag]: 350.0° to 15.0°				Arc Distance: Out to 53.0 NM Altitude: 6900.0 to 15900.0 ft		
6	DNY FAA 881476-19 DNY	N42° 10' 41.8100", W074° 57' 24.9860"	11.0 W	40	2560	112.1	DNY FAA 881476-19	
	ESV:	Bearing [True]: 50.0° to 122.0° Bearing [Mag]: 61.0° to 133.0°				Arc Distance: Out to 70.0 NM Altitude: 9000.0 to 16000.0 ft		
7	CFB [IFPA] CFB	N42° 09' 26.9653", W076° 08' 11.2978"	10.0 W	40	1583.1	112.2	CFB [IFPA]	
	ESV:	Bearing [True]: 83.0° to 93.0° Bearing [Mag]: 93.0° to 103.0°				Arc Distance: Out to 73.0 NM Altitude: 6900.0 to 19600.0 ft		
8	CTR [IFPA] CTR	N42° 17' 28.7470", W072° 56' 57.8190"	13.0 W	40	1600	115.1	CTR [IFPA]	
	ESV:	Bearing [True]: 299.0° to 310.0° Bearing [Mag]: 312.0° to 323.0°				Arc Distance: Out to 51.0 NM Altitude: 9800.0 to 19600.0 ft		
9	CCC CCC	N40° 55' 46.6278", W072° 47' 55.8897"	13.0 W	130	84.7	114.55	CCC	
	ESV:	Bearing [True]: 318.0° to 328.0° Bearing [Mag]: 331.0° to 341.0°				Arc Distance: Out to 62.0 NM Altitude: 3900.0 to 14600.0 ft		

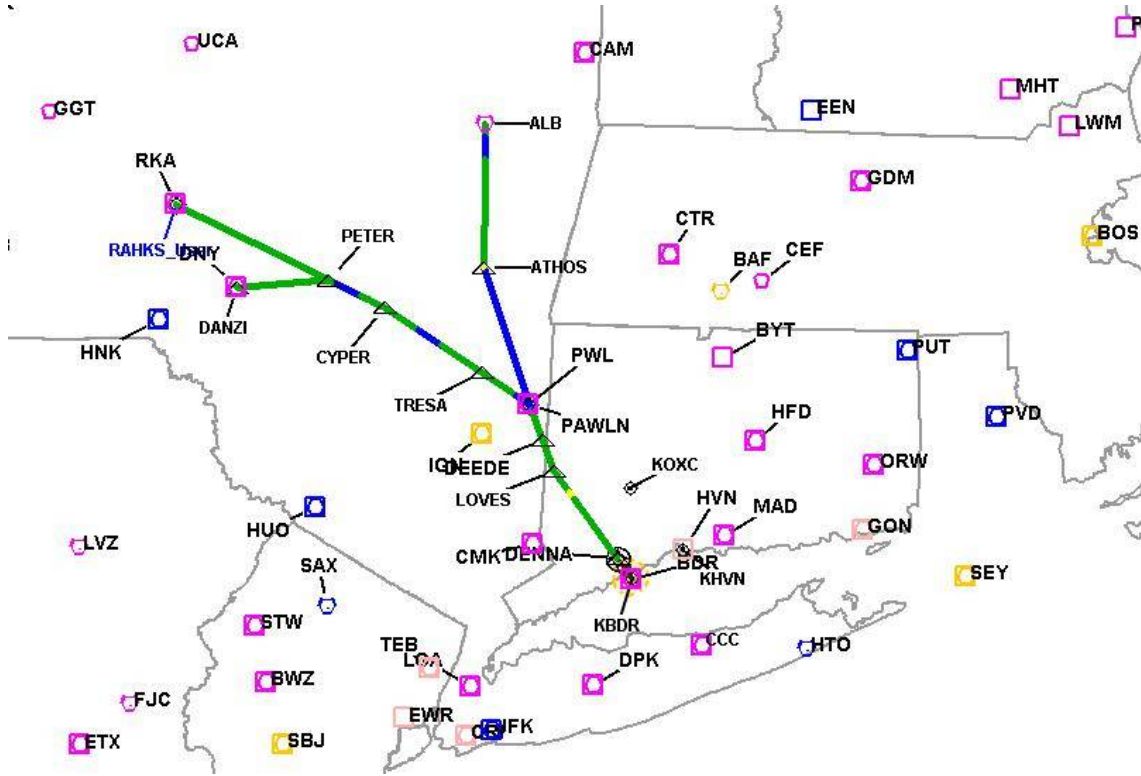
DME DME Assessment Results for DENNA1 path ALB_PAWLN

DME Error



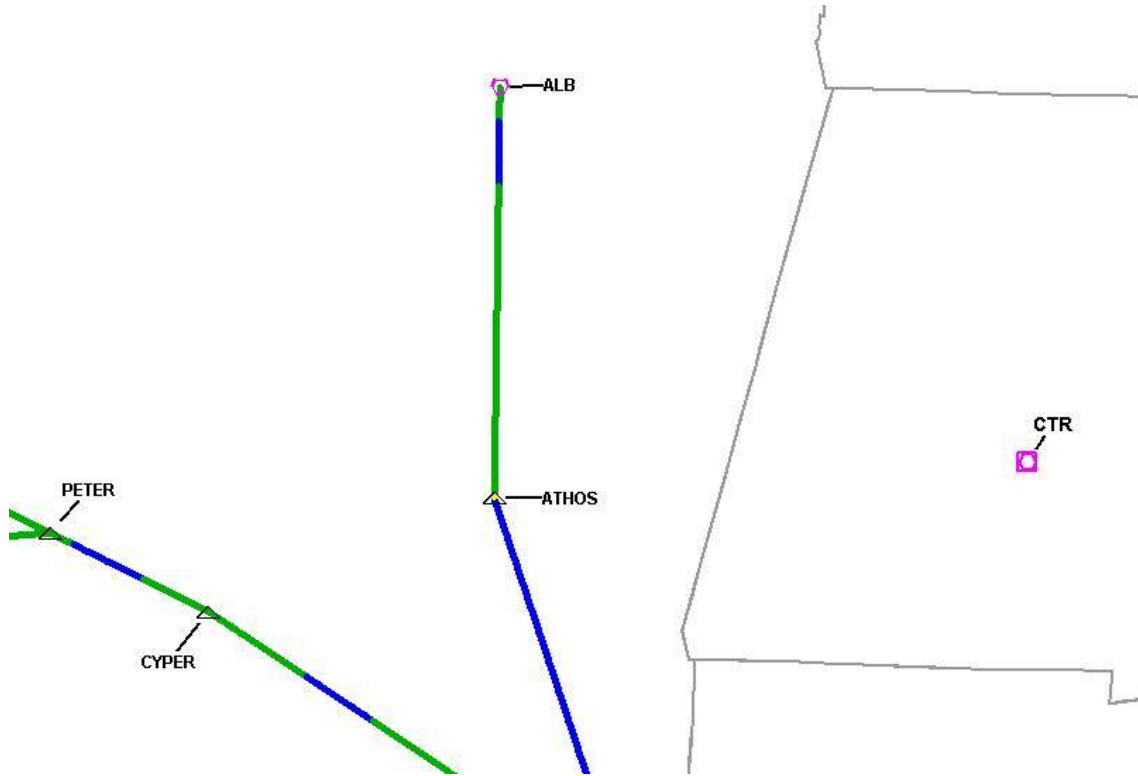
DME DME Assessment Results for DENNA1 path ALB_PAWLN

Graphic Depiction 1



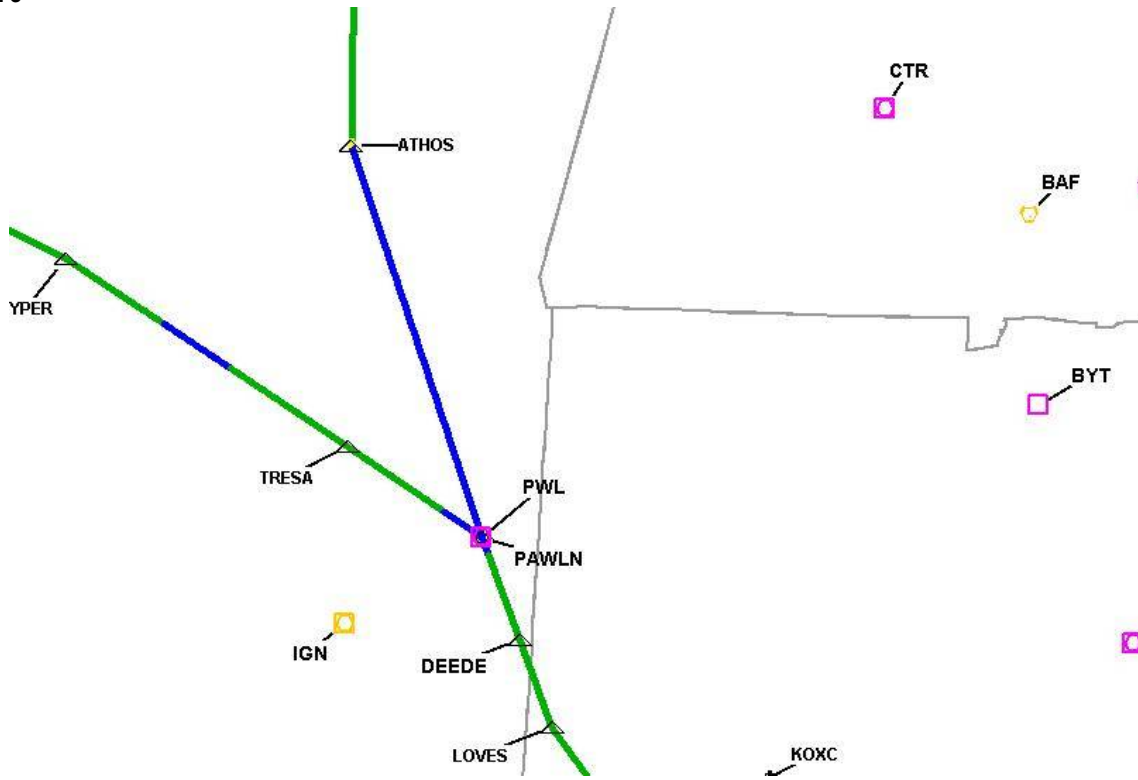
DME DME Assessment Results for DENNA1 path ALB_PAWLN

Graphic Depiction 2



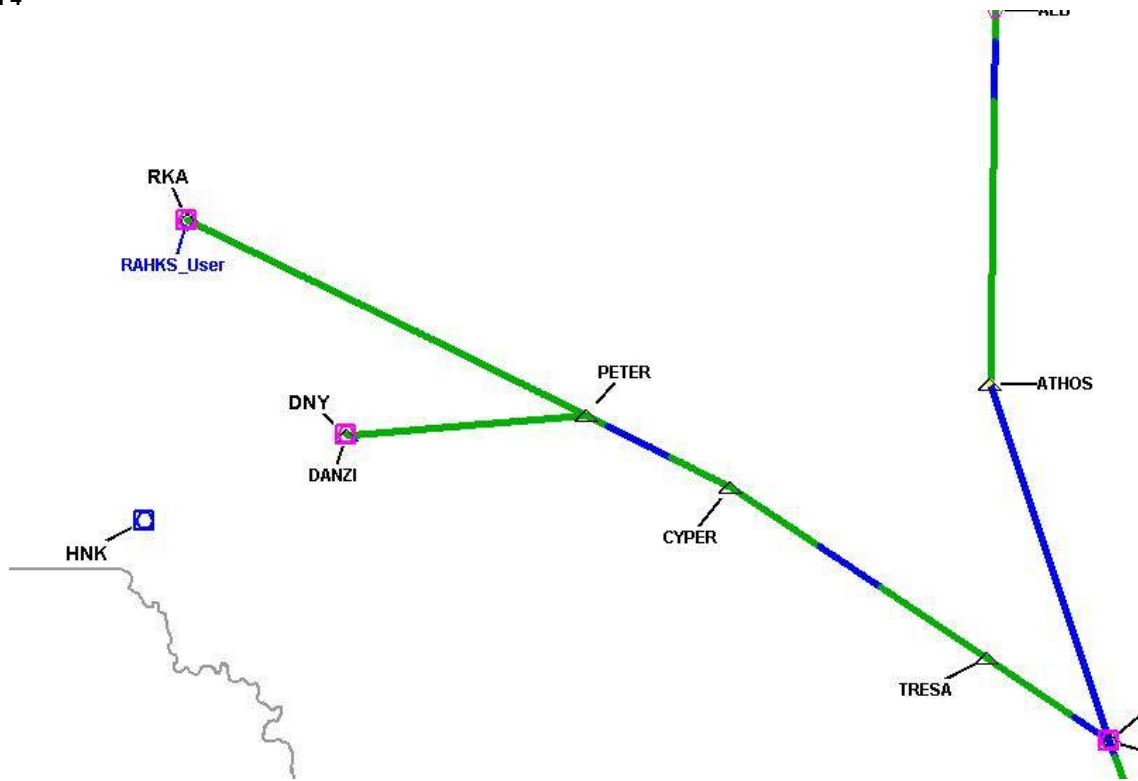
DME DME Assessment Results for DENNA1 path ALB_PAWLNLN

Graphic Depiction 3



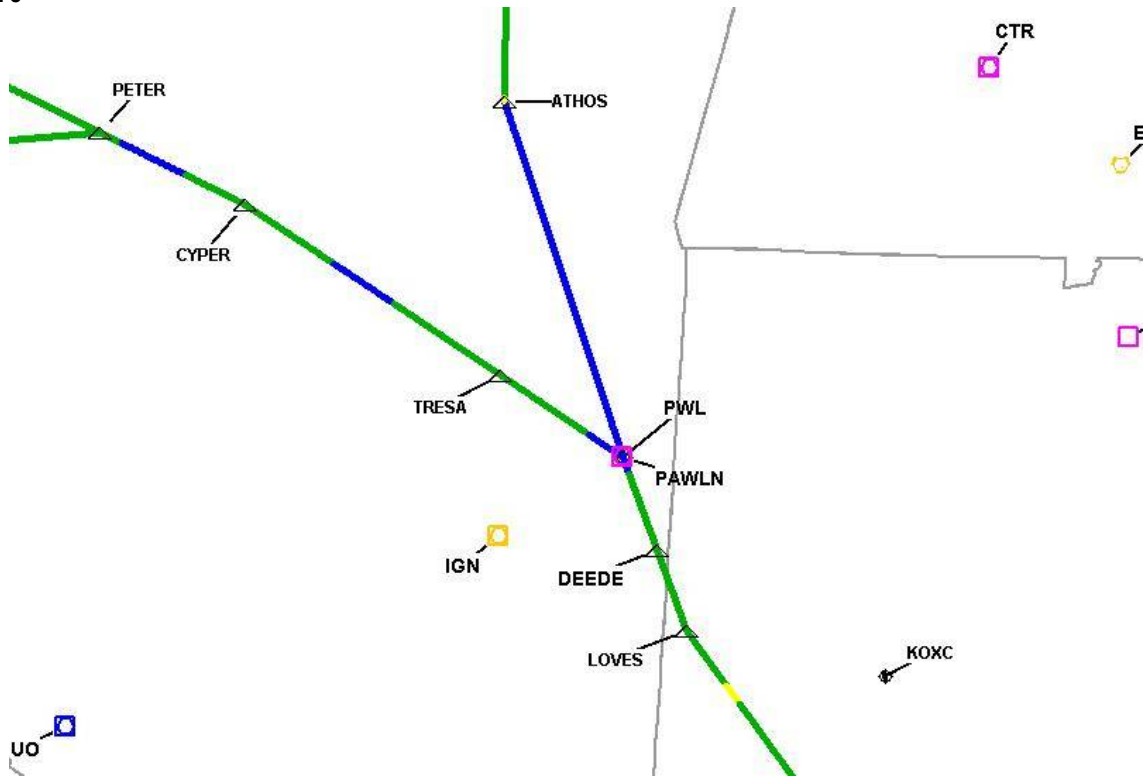
DME DME Assessment Results for DENNA1 path ALB_PAWLN

Graphic Depiction 4



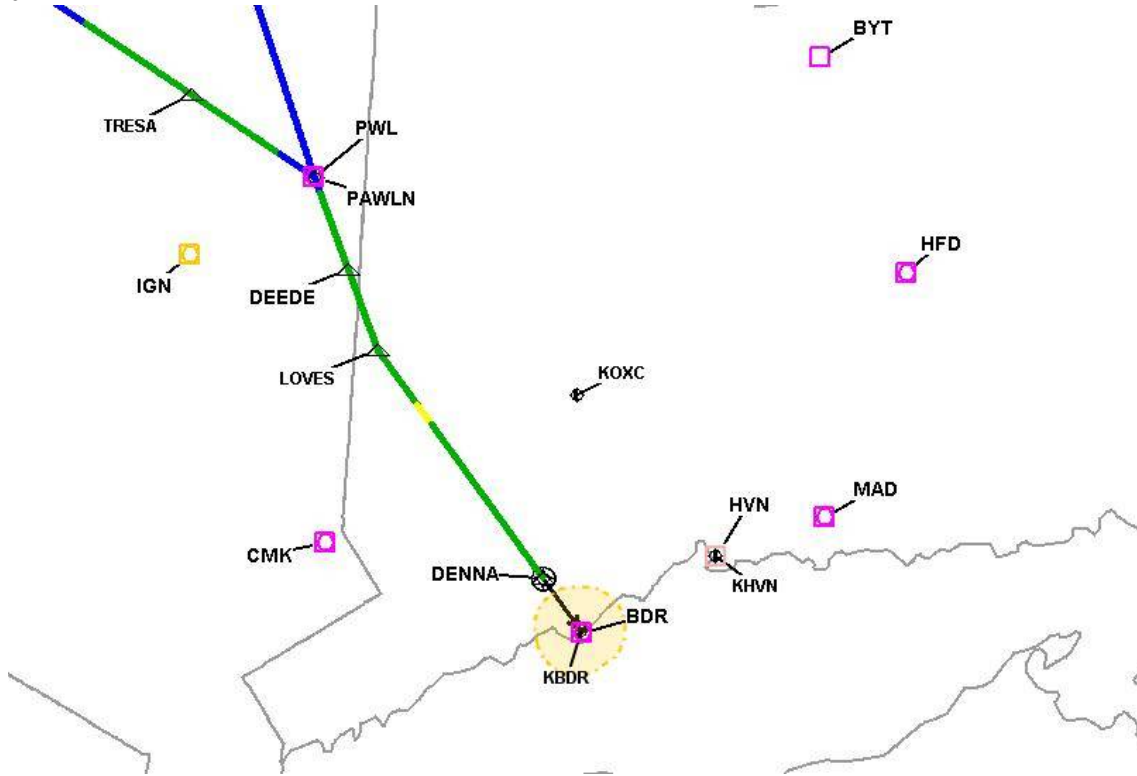
DME DME Assessment Results for DENNA1 path ALB_PAWLNL

Graphic Depiction 5



DME DME Assessment Results for DENNA1 path ALB_PAWL

Graphic Depiction 6



DME DME Assessment Results for DENNA1 path DANZI_DENNA

Results Summary

Flyability:	Completed
DME/DME:	Completed - No Critical DMEs
Name:	David C-CTR Cook
Project File:	C:\Users\David C-CTR Cook\Documents\TARGETS WORK\DME-DME WORK\10-2-2025 PUBLICATION\KBDR DEENA1 (RNAV) STAR\KBDR DENNA1 (RNAV) STAR_20241113_DME-DME.tgs
Output File:	C:\Users\David C-CTR Cook\Documents\TARGETS WORK\DME-DME WORK\10-2-2025 PUBLICATION\KBDR DEENA1 (RNAV) STAR\KBDR [IFPA] DENNA1 20241118_0746 EST\DANZI_DENNA\KBDR DENNA1 RNAV STAR DANZI DENNA 20241118_0746 EST.pdf
Procedure Name:	DENNA1
Software: DmeDmePlugin:	7.4.0
Date/Time:	11/18/2024 07:46 EST
Databases:	MITRE 3DEP 3 arcsec

Failures

No Failures

Warnings

No Warnings

Informational

No Informational

Notes For Flight Check

None

Flight Plan

Name	Type	Lat/Lon	Altitude (ft)	VNAV Mode	Ground Speed (kts)	Turn Type	Leg Type
DANZI	WP	N42° 10' 41.8600", W074° 57' 24.1900"	8000	VNAV	200	FLY_BY	TF
PETER	WP	N42° 12' 18.9300", W074° 31' 50.2500"	7000	VNAV	200	FLY_BY	TF
CYPER	WP	N42° 06' 32.3700", W074° 16' 25.5200"	6100	VNAV	200	FLY_BY	TF
TRESA	WP	N41° 52' 49.6100", W073° 49' 06.8000"	6100	VNAV	200	FLY_BY	TF
PAWLN	WP	N41° 46' 11.5100", W073° 36' 02.6400"	5000	VNAV	200	FLY_BY	TF
DEEDE	WP	N41° 38' 47.8100", W073° 32' 25.7400"	4000	VNAV	200	FLY_BY	TF
LOVES	WP	N41° 32' 19.6400", W073° 29' 17.1400"	4000	VNAV	200	FLY_BY	TF
DENNA	WP	N41° 13' 59.7900", W073° 11' 37.9400"	2500	VNAV	200	FLY_OVER	TF

Flyability

Flight Type:	RNAV_STAR
Selected Airport:	KBDR [IFPA]
Climb Gradient:	None assigned
Speeds:	200 Ground Speed to 11000 FT
	240 Ground Speed to 18000 FT
	260 Ground Speed to 24000 FT
	340 Ground Speed above 24000 FT
Descent During a Turn:	Allowed
VNAV Mode:	Flight Plan

DME DME Assessment Results for DENNA1 path DANZI_DENNA

DME/DME	
RNP:	RNP 2
Flight Mode:	Manual
Line of Sight (DTED Level 0 Max):	Evaluated
Inertial Drift:	Enabled
Initial Drift:	0.558 NM
INS Drift Rate:	8.0 NM/Hour
Range Mode:	OSV
RNP Edges:	Evaluated
Min DME Range:	3.0 NM
DME Types:	DME, VOR-DME, VORTAC, TACAN
DME Include Angles:	30 to 150
Critical DMEs:	Allowed
DoD Facilities:	Not included
Foreign Facilities:	Not included
High DMEs:	Included
Low DMEs:	Included
Terminal DMEs:	Included
Flight Check DMEs:	Not selected
Higher Altitudes:	Not Evaluated
Near Maximum Altitude:	Not Evaluated
Automatic ESVs:	Enabled
Disabled DMEs:	None

DME/DME (Continued)										
DMEs Used										
#	Name	Lat/Lon	MAGVAR	Range	Type	Source	Critical	Status	Time	Distance
1	CMK	N41° 16' 48.3219", W073° 34' 52.7751"	12.0 W	40	L		NO	Enabled	21.6 %	21.6 %
2	HVN	N41° 15' 44.3264", W072° 53' 06.6847"	0.0 E	25	T		NO	Enabled	11.1 %	11.1 %
3	CCC	N40° 55' 46.6278", W072° 47' 55.8897"	13.0 W	130	H		NO	Enabled	20.3 %	20.3 %
4	HUO	N41° 24' 34.8718", W074° 35' 29.7393"	11.0 W	130	H		NO	Enabled	27.3 %	27.3 %
5	HNK	N42° 03' 47.0050", W075° 18' 58.6240"	11.0 W	130	H		NO	Enabled	19.8 %	19.8 %
6	PWL	N41° 46' 11.1770", W073° 36' 01.9850"	12.0 W	40	L		NO	Enabled	50.2 %	50.2 %
7	LGA	N40° 47' 01.3731", W073° 52' 06.9569"	12.0 W	40	L		NO	Enabled	11.3 %	11.4 %
8	HFD	N41° 38' 27.9769", W072° 32' 50.7048"	13.0 W	40	L		NO	Enabled	0.5 %	0.5 %
9	RKA	N42° 27' 58.7900", W075° 14' 21.2210"	11.0 W	40	L		NO	Enabled	19.8 %	19.8 %
10	DNY	N42° 10' 41.8100", W074° 57' 24.9860"	11.0 W	40	L		NO	Enabled	27.8 %	27.7 %
11	IGN	N41° 39' 55.6258", W073° 49' 20.0613"	12.0 W	40	L		NO	Enabled	50.9 %	51 %
12	BDR	N41° 09' 38.5404", W073° 07' 28.1507"	12.0 W	40	L		NO	Enabled	22.1 %	22.1 %
13	MAD	N41° 18' 49.9000", W072° 41' 31.9300"	13.0 W	40	L		NO	Enabled	20.6 %	20.7 %
14	CFB	N42° 09' 26.9653", W076° 08' 11.2978"	10.0 W	40	L		NO	Enabled	18.1 %	18 %

DME DME Assessment Results for DENNA1 path DANZI_DENNA

Flight Check DME Selection						
Distance [NM]	Selected DMEs					Alternate
0.0	HUO	HNK	RKA	CFB		
3.5	HUO	HNK	DNY	CFB	RKA	
19.1	HNK	RKA				
21.0						
26.5	DNY	IGN				
40.4						
46.2	PWL	IGN				
51.9	HUO	PWL	IGN			
61.8	PWL	IGN				
64.9						
69.6	CCC	IGN				
70.3	CCC	IGN	LGA			
71.3	PWL	IGN	CCC	LGA		
76.9	CMK	IGN	LGA	PWL	CCC	
77.1	CMK	IGN	LGA	PWL		
82.3	CMK	IGN	BDR	PWL		
83.9	CMK	MAD	IGN	BDR	PWL	
85.1	PWL	IGN	MAD	BDR		
88.5	CMK	IGN	MAD	BDR	PWL	
89.0	PWL	MAD	BDR	IGN		
89.8	HFD	PWL	BDR	IGN	MAD	
90.4	CMK	IGN	BDR	PWL	MAD	
91.0	CMK	BDR	PWL	MAD		
91.7	CMK	CCC	BDR	PWL	MAD	
104.4	PWL	MAD	BDR	HVN	CCC	

Inertial Drift Segments			
#	Start Location	End Location	Length [NM]
1	N42° 11' 28.2710", W074° 29' 34.5539"	N42° 08' 57.5204", W074° 22' 51.8118"	5.5876
2	N42° 01' 48.3081", W074° 06' 56.9434"	N41° 58' 34.7722", W074° 00' 31.2631"	5.7761
3	N41° 48' 05.6725", W073° 39' 46.9360"	N41° 44' 56.5271", W073° 35' 25.9226"	4.7057

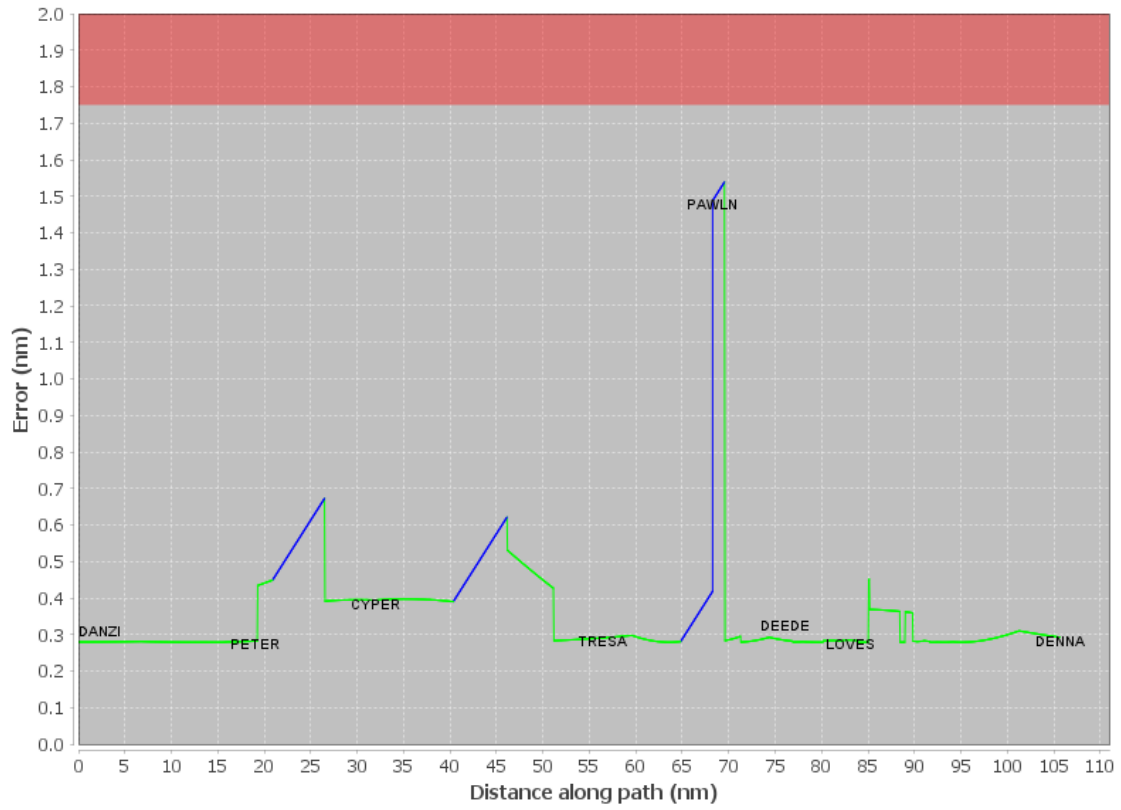
Available DMEs by Waypoints			
Waypoint Before	Waypoint After	DME List	Suggested DMEs
DANZI	PETER	HUO, HNK, RKA, CFB, DNY	
PETER	CYPER	IGN, HNK, RKA, DNY	
CYPER	TRESA	IGN, HUO, PWL, DNY	
TRESA	PAWLN	IGN, HUO, PWL	
PAWLN	DEEDE	IGN, CCC, PWL, LGA	
DEEDE	LOVES	CMK, IGN, BDR, CCC, PWL, LGA	
LOVES	DENNA	CMK, BDR, IGN, MAD, HVN, CCC, PWL, HFD	

DME DME Assessment Results for DENNA1 path DANZI_DENNA

User Data Files								
#	File Name							
1	New Analysis.udt							
2	UserDMEsKBAF [IFPA] STELA1 RNAV STAR_20240716_1429 EDT.udt							
User DMEs								
#	Name	Lat/Lon	MAGVAR	Range	Elevation [ft]	Frequency	Replaces	Status
1	HUO [IFPA] 2 HUO	N41° 24' 34.8718", W074° 35' 29.7393"	11.0 W	130	1300.3	116.1	HUO [IFPA] 2	
	ESV:	Bearing [True]: 44.0° to 59.0° Bearing [Mag]: 55.0° to 70.0°				Arc Distance: Out to 51.0 NM Altitude: 4900.0 to 15900.0 ft		
2	UDT ESV PWL PWL	N41° 46' 11.1770", W073° 36' 01.9850"	12.0 W	40	1250	114.3	UDT ESV PWL	
	ESV:	Bearing [True]: 341.0° to 357.0° Bearing [Mag]: 353.0° to 9.0°				Arc Distance: Out to 62.0 NM Altitude: 9900.0 to 19300.0 ft		
3	UDT ESV PWL PWL	N41° 46' 11.1770", W073° 36' 01.9850"	12.0 W	40	1250	114.3	UDT ESV PWL	
	ESV:	Bearing [True]: 341.0° to 357.0° Bearing [Mag]: 353.0° to 9.0°				Arc Distance: Out to 62.0 NM Altitude: 9900.0 to 19300.0 ft		
4	ESV LGA [IFPA] LGA	N40° 47' 01.3731", W073° 52' 06.9569"	12.0 W	40	10.9	113.1	ESV LGA [IFPA]	
	ESV:	Bearing [True]: 8.0° to 24.0° Bearing [Mag]: 20.0° to 36.0°				Arc Distance: Out to 61.0 NM Altitude: 3900.0 to 12100.0 ft		
5	HUO [IFPA] 1 HUO	N41° 24' 34.8718", W074° 35' 29.7393"	11.0 W	130	1300.3	116.1	HUO [IFPA] 1	
	ESV:	Bearing [True]: 339.0° to 4.0° Bearing [Mag]: 350.0° to 15.0°				Arc Distance: Out to 53.0 NM Altitude: 6900.0 to 15900.0 ft		
6	DNY FAA 881476-19 DNY	N42° 10' 41.8100", W074° 57' 24.9860"	11.0 W	40	2560	112.1	DNY FAA 881476-19	
	ESV:	Bearing [True]: 50.0° to 122.0° Bearing [Mag]: 61.0° to 133.0°				Arc Distance: Out to 70.0 NM Altitude: 9000.0 to 16000.0 ft		
7	CFB [IFPA] CFB	N42° 09' 26.9653", W076° 08' 11.2978"	10.0 W	40	1583.1	112.2	CFB [IFPA]	
	ESV:	Bearing [True]: 83.0° to 93.0° Bearing [Mag]: 93.0° to 103.0°				Arc Distance: Out to 73.0 NM Altitude: 6900.0 to 19600.0 ft		
8	CTR [IFPA] CTR	N42° 17' 28.7470", W072° 56' 57.8190"	13.0 W	40	1600	115.1	CTR [IFPA]	
	ESV:	Bearing [True]: 299.0° to 310.0° Bearing [Mag]: 312.0° to 323.0°				Arc Distance: Out to 51.0 NM Altitude: 9800.0 to 19600.0 ft		
9	CCC CCC	N40° 55' 46.6278", W072° 47' 55.8897"	13.0 W	130	84.7	114.55	CCC	
	ESV:	Bearing [True]: 318.0° to 328.0° Bearing [Mag]: 331.0° to 341.0°				Arc Distance: Out to 62.0 NM Altitude: 3900.0 to 14600.0 ft		

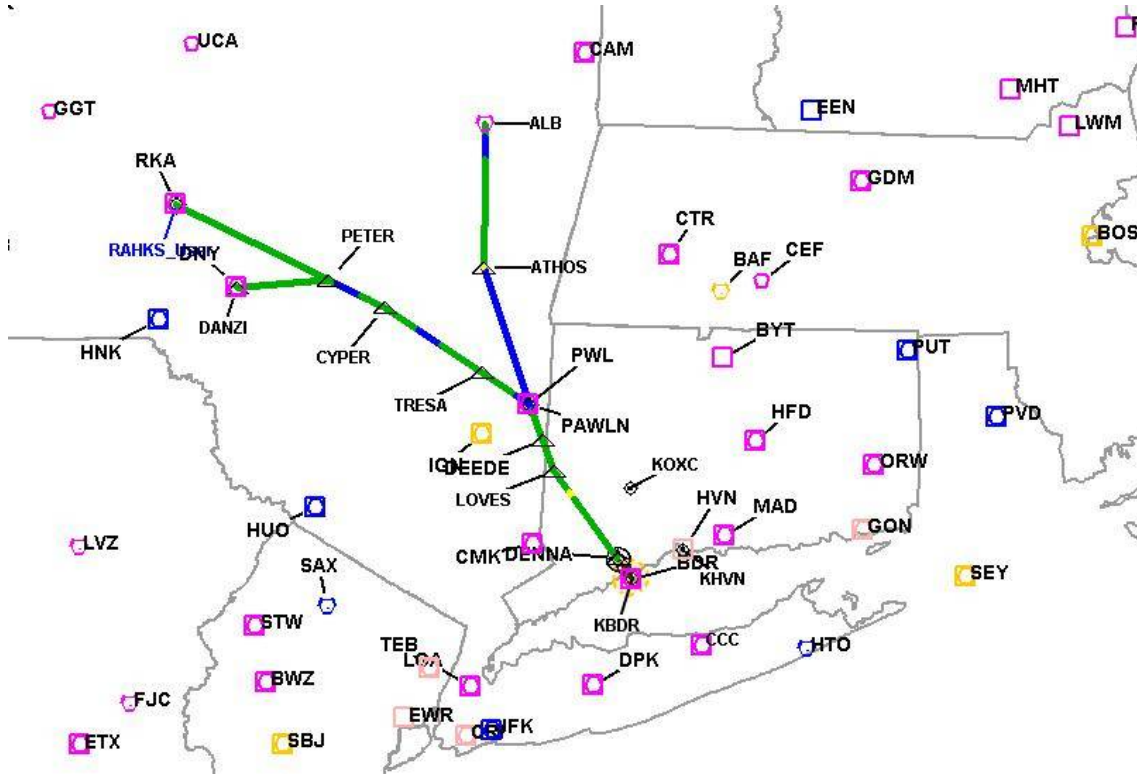
DME DME Assessment Results for DENNA1 path DANZI_DENNA

DME Error



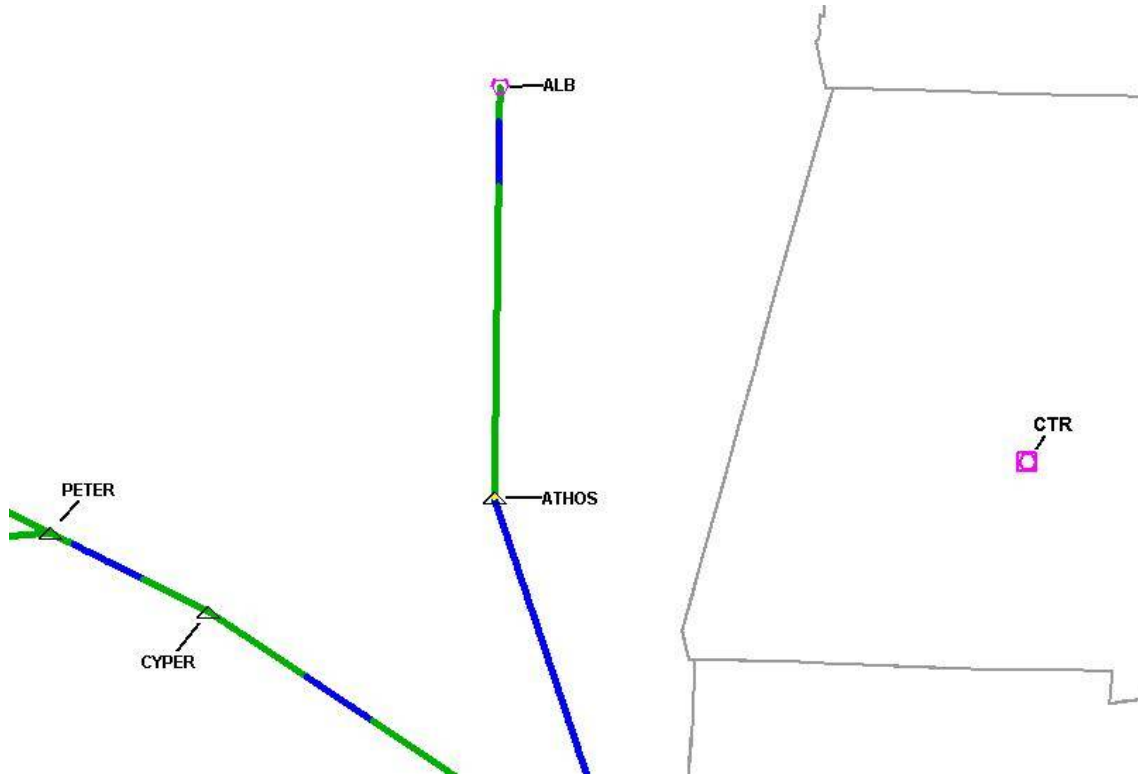
DME DME Assessment Results for DENNA1 path DANZI_DENNA

Graphic Depiction 1



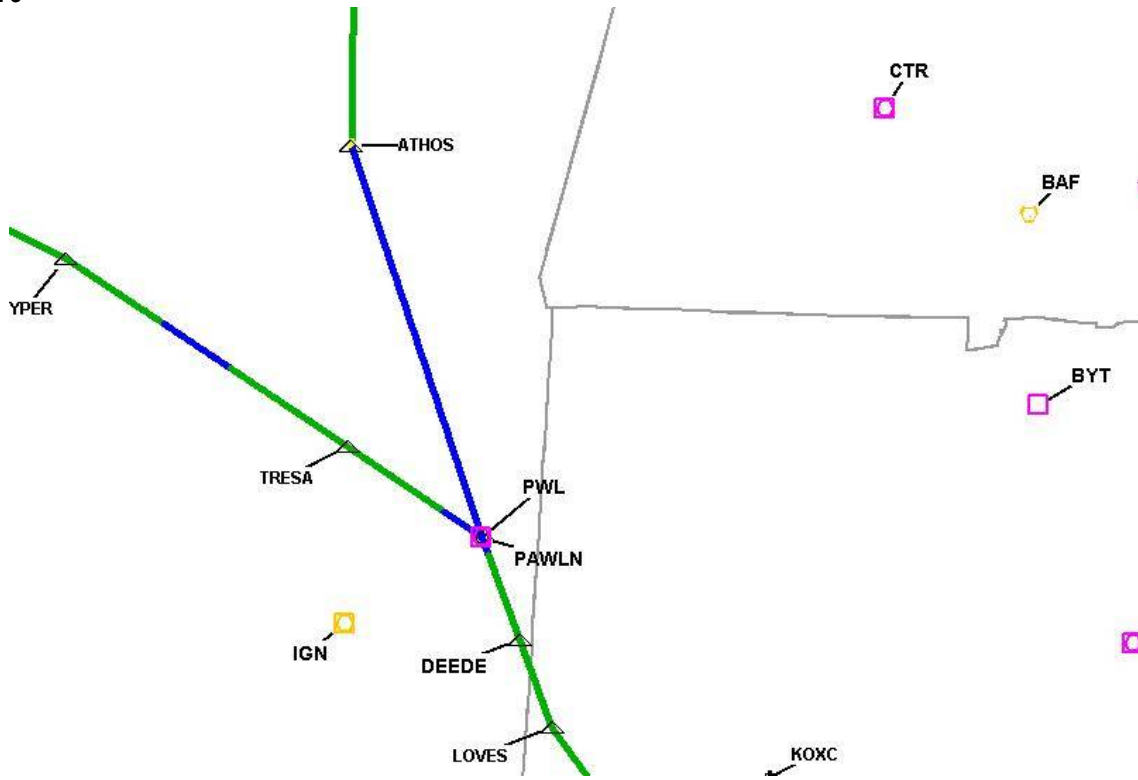
DME DME Assessment Results for DENNA1 path DANZI_DENNA

Graphic Depiction 2



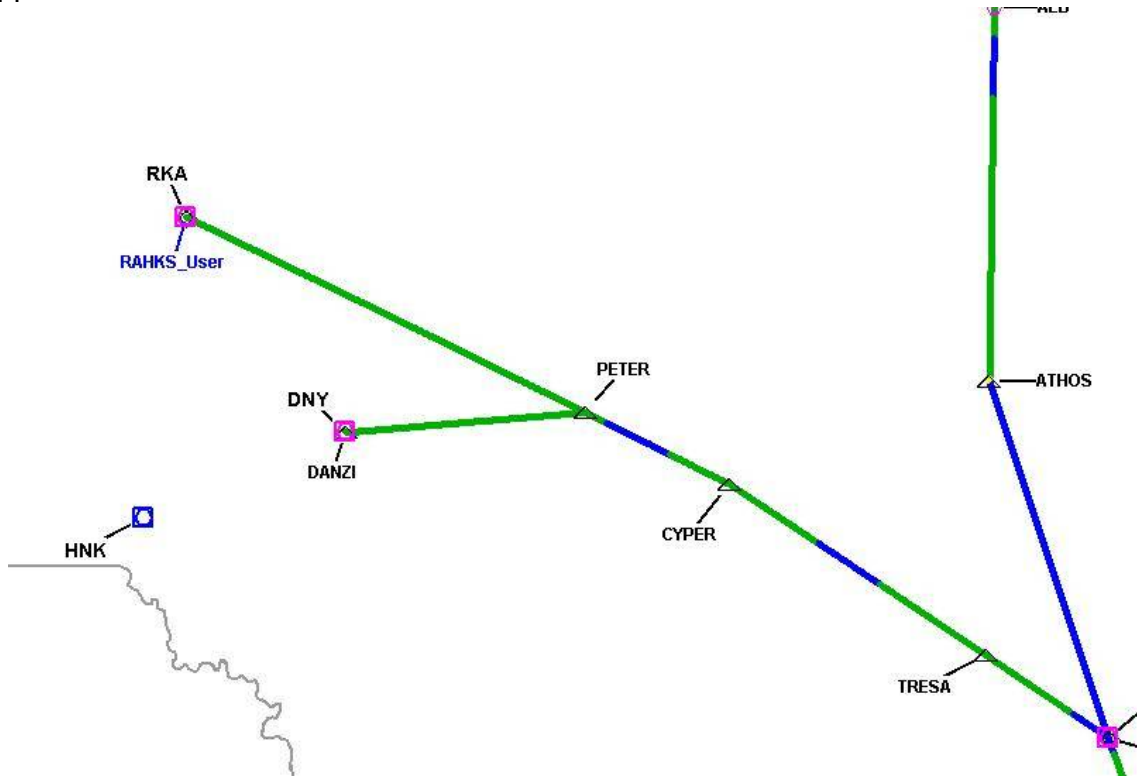
DME DME Assessment Results for DENNA1 path DANZI_DENNA

Graphic Depiction 3



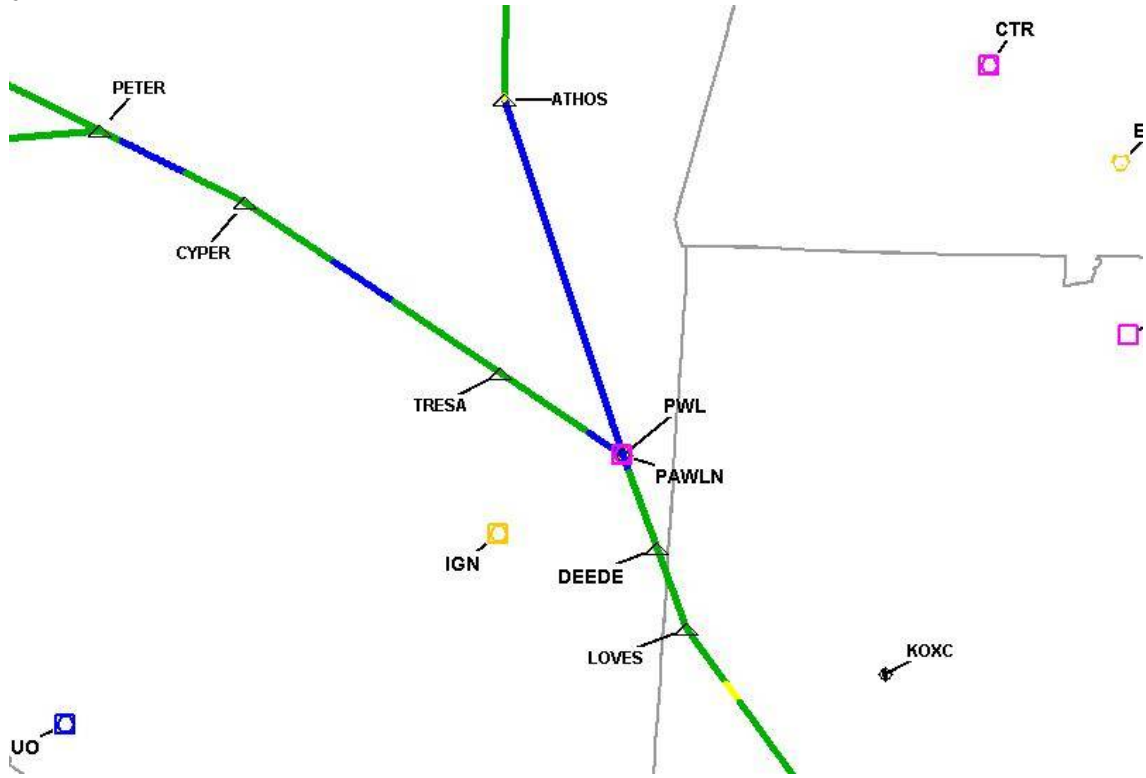
DME DME Assessment Results for DENNA1 path DANZI_DENNA

Graphic Depiction 4



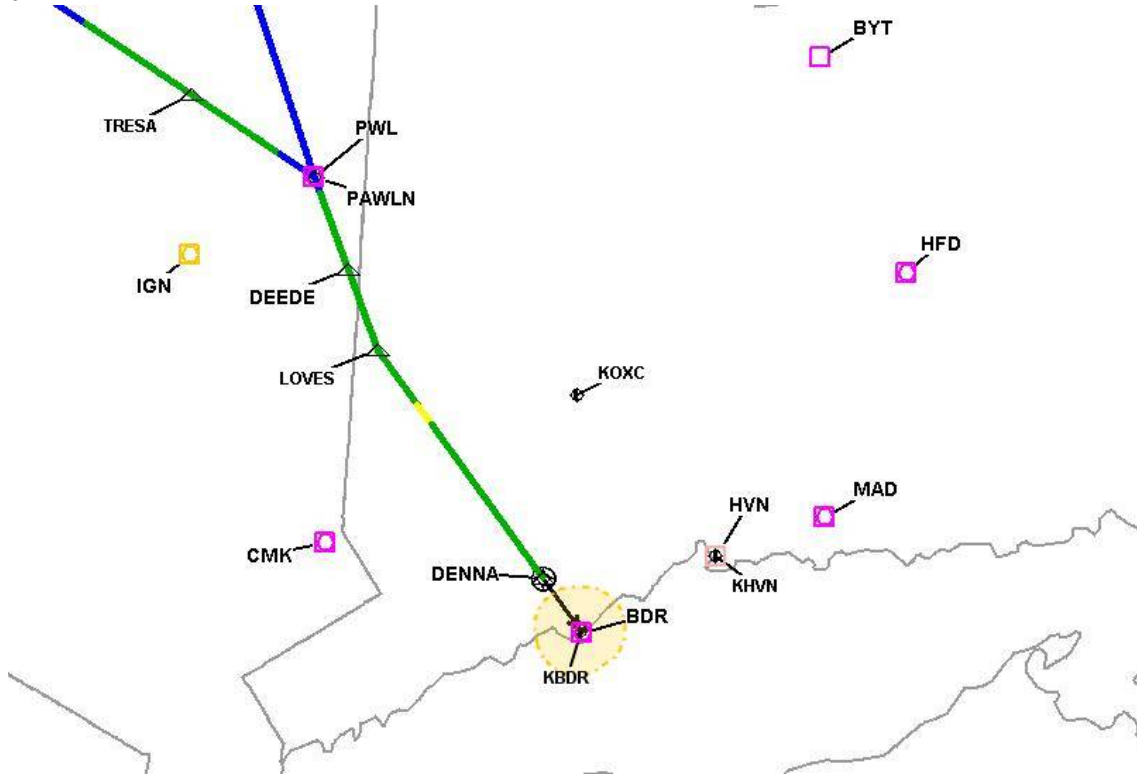
DME DME Assessment Results for DENNA1 path DANZI_DENNA

Graphic Depiction 5



DME DME Assessment Results for DENNA1 path DANZI_DENNA

Graphic Depiction 6



DME DME Assessment Results for DENNA1 path RAHKS_User_PETER

Results Summary	
Flyability:	Completed
DME/DME:	Completed - No Critical DMEs
Name:	David C-CTR Cook
Project File:	C:\Users\David C-CTR Cook\Documents\TARGETS WORK\DME-DME WORK\10-2-2025 PUBLICATION\KBDR DEENA1 (RNAV) STAR\KBDR DENNA1 (RNAV) STAR_20241113_DME-DME.tgs
Output File:	C:\Users\David C-CTR Cook\Documents\TARGETS WORK\DME-DME WORK\10-2-2025 PUBLICATION\KBDR DEENA1 (RNAV) STAR\KBDR [IFPA] DENNA1 20241118_0746 EST\RAHKS_User_PETER\KBDR DENNA1 RNAV STAR RAHKS User PETER 20241118_0746 EST.pdf
Procedure Name:	DENNA1
Software: DmeDmePlugin:	7.4.0
Date/Time:	11/18/2024 07:46 EST
Databases:	MITRE 3DEP 3 arcsec

Failures
No Failures

Warnings
No Warnings

Informational
No Informational

Notes For Flight Check
None

Flight Plan							
Name	Type	Lat/Lon	Altitude (ft)	VNAV Mode	Ground Speed (kts)	Turn Type	Leg Type
RAHKS_User	WP	N42° 27' 59.2800", W075° 14' 21.6800"	8000	VNAV	200	FLY_BY	TF
PETER	WP	N42° 12' 18.9300", W074° 31' 50.2500"	7000	VNAV	200	FLY_BY	TF

Flyability	
Flight Type:	RNAV_STAR
Selected Airport:	KBDR [IFPA]
Climb Gradient:	None assigned
Speeds:	200 Ground Speed to 11000 FT
	240 Ground Speed to 18000 FT
	260 Ground Speed to 24000 FT
	340 Ground Speed above 24000 FT
Descent During a Turn:	Allowed
VNAV Mode:	Flight Plan

DME DME Assessment Results for DENNA1 path RAHKS_User_PETER

DME/DME	
RNP:	RNP 2
Flight Mode:	Manual
Line of Sight (DTED Level 0 Max):	Evaluated
Inertial Drift:	Enabled
Initial Drift:	0.558 NM
INS Drift Rate:	8.0 NM/Hour
Range Mode:	OSV
RNP Edges:	Evaluated
Min DME Range:	3.0 NM
DME Types:	DME, VOR-DME, VORTAC, TACAN
DME Include Angles:	30 to 150
Critical DMEs:	Allowed
DoD Facilities:	Not included
Foreign Facilities:	Not included
High DMEs:	Included
Low DMEs:	Included
Terminal DMEs:	Included
Flight Check DMEs:	Not selected
Higher Altitudes:	Not Evaluated
Near Maximum Altitude:	Not Evaluated
Automatic ESVs:	Enabled
Disabled DMEs:	None

DME/DME (Continued)										
DMEs Used										
#	Name	Lat/Lon	MAGVAR	Range	Type	Source	Critical	Status	Time	Distance
1	UCA	N43° 01' 35.4510", W075° 09' 52.2790"	12.0 W	40	L		NO	Enabled	18 %	18 %
2	HUO	N41° 24' 34.8718", W074° 35' 29.7393"	11.0 W	130	H		NO	Enabled	7.6 %	7.6 %
3	HNK	N42° 03' 47.0050", W075° 18' 58.6240"	11.0 W	130	H		NO	Enabled	100 %	100 %
4	GGT	N42° 47' 20.2410", W075° 49' 36.2900"	11.0 W	40	L		NO	Enabled	19.7 %	19.7 %
5	RKA	N42° 27' 58.7900", W075° 14' 21.2210"	11.0 W	40	L		NO	Enabled	90.2 %	90.2 %
6	DNY	N42° 10' 41.8100", W074° 57' 24.9860"	11.0 W	40	L		NO	Enabled	97 %	97 %
7	CFB	N42° 09' 26.9653", W076° 08' 11.2978"	10.0 W	40	L		NO	Enabled	6.6 %	6.6 %

Flight Check DME Selection						
Distance [NM]	Selected DMEs					Alternate
0.0	HNK	GGT	UCA	DNY		
3.1	HNK	GGT	UCA	DNY	RKA	
3.3	HNK	GGT	UCA	DNY		
3.6	HNK	RKA	GGT	UCA	DNY	
6.4	HNK	RKA	GGT	DNY		
7.0	HNK	RKA	DNY			
31.5	HUO	DNY	HNK	RKA		
31.8	HUO	CFB	DNY	HNK	RKA	
34.2	HNK	RKA				

Inertial Drift Segments			
#	Start Location	End Location	Length [NM]

DME DME Assessment Results for DENNA1 path RAHKS_User_PETER

Available DMEs by Waypoints

Waypoint Before	Waypoint After	DME List	Suggested DMEs
RAHKS_User	PETER	UCA, HUO, HNK, GGT, RKA, DNY, CFB	

User Data Files

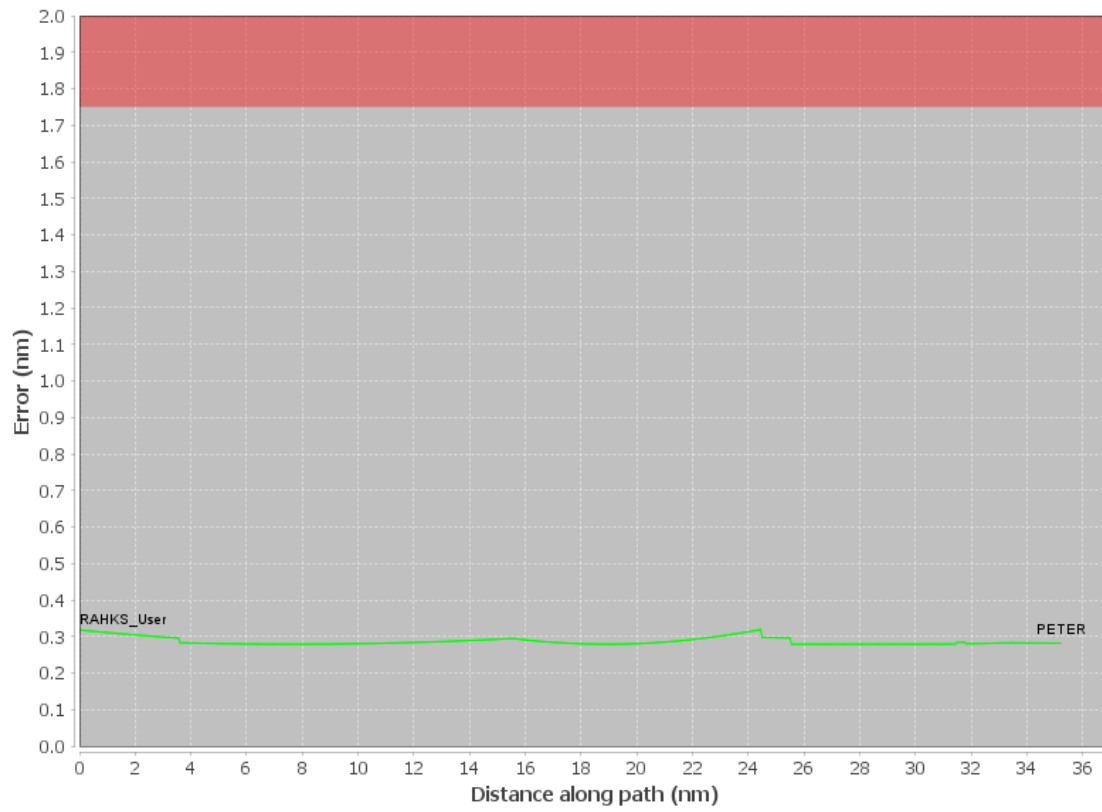
#	File Name
1	New Analysis.udt
2	UserDMEsKBAF [IFPA] STELA1 RNAV STAR_20240716_1429 EDT.udt

User DMEs

#	Name	Lat/Lon	MAGVAR	Range	Elevation [ft]	Frequency	Replaces	Status
1	HUO [IFPA] 2 HUO	N41° 24' 34.8718", W074° 35' 29.7393"	11.0 W	130	1300.3	116.1	HUO [IFPA] 2	
	ESV:	Bearing [True]: 44.0° to 59.0° Bearing [Mag]: 55.0° to 70.0°				Arc Distance: Out to 51.0 NM Altitude: 4900.0 to 15900.0 ft		
2	UDT ESV PWL PWL	N41° 46' 11.1770", W073° 36' 01.9850"	12.0 W	40	1250	114.3	UDT ESV PWL	
	ESV:	Bearing [True]: 341.0° to 357.0° Bearing [Mag]: 353.0° to 9.0°				Arc Distance: Out to 62.0 NM Altitude: 9900.0 to 19300.0 ft		
3	UDT ESV PWL PWL	N41° 46' 11.1770", W073° 36' 01.9850"	12.0 W	40	1250	114.3	UDT ESV PWL	
	ESV:	Bearing [True]: 341.0° to 357.0° Bearing [Mag]: 353.0° to 9.0°				Arc Distance: Out to 62.0 NM Altitude: 9900.0 to 19300.0 ft		
4	ESV LGA [IFPA] LGA	N40° 47' 01.3731", W073° 52' 06.9569"	12.0 W	40	10.9	113.1	ESV LGA [IFPA]	
	ESV:	Bearing [True]: 8.0° to 24.0° Bearing [Mag]: 20.0° to 36.0°				Arc Distance: Out to 61.0 NM Altitude: 3900.0 to 12100.0 ft		
5	HUO [IFPA] 1 HUO	N41° 24' 34.8718", W074° 35' 29.7393"	11.0 W	130	1300.3	116.1	HUO [IFPA] 1	
	ESV:	Bearing [True]: 339.0° to 4.0° Bearing [Mag]: 350.0° to 15.0°				Arc Distance: Out to 53.0 NM Altitude: 6900.0 to 15900.0 ft		
6	DNY FAA 881476-19 DNY	N42° 10' 41.8100", W074° 57' 24.9860"	11.0 W	40	2560	112.1	DNY FAA 881476-19	
	ESV:	Bearing [True]: 50.0° to 122.0° Bearing [Mag]: 61.0° to 133.0°				Arc Distance: Out to 70.0 NM Altitude: 9000.0 to 16000.0 ft		
7	CFB [IFPA] CFB	N42° 09' 26.9653", W076° 08' 11.2978"	10.0 W	40	1583.1	112.2	CFB [IFPA]	
	ESV:	Bearing [True]: 83.0° to 93.0° Bearing [Mag]: 93.0° to 103.0°				Arc Distance: Out to 73.0 NM Altitude: 6900.0 to 19600.0 ft		
8	CTR [IFPA] CTR	N42° 17' 28.7470", W072° 56' 57.8190"	13.0 W	40	1600	115.1	CTR [IFPA]	
	ESV:	Bearing [True]: 299.0° to 310.0° Bearing [Mag]: 312.0° to 323.0°				Arc Distance: Out to 51.0 NM Altitude: 9800.0 to 19600.0 ft		
9	CCC CCC	N40° 55' 46.6278", W072° 47' 55.8897"	13.0 W	130	84.7	114.55	CCC	
	ESV:	Bearing [True]: 318.0° to 328.0° Bearing [Mag]: 331.0° to 341.0°				Arc Distance: Out to 62.0 NM Altitude: 3900.0 to 14600.0 ft		

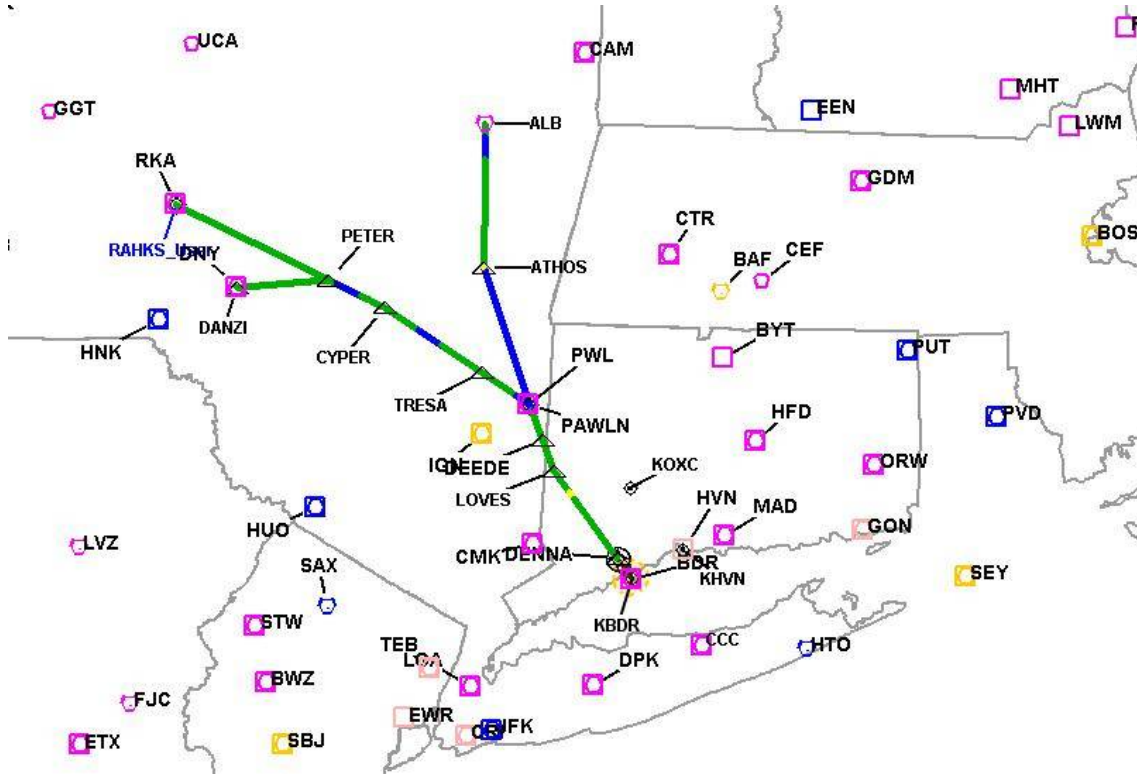
DME DME Assessment Results for DENNA1 path RAHKS_User_PETER

DME Error



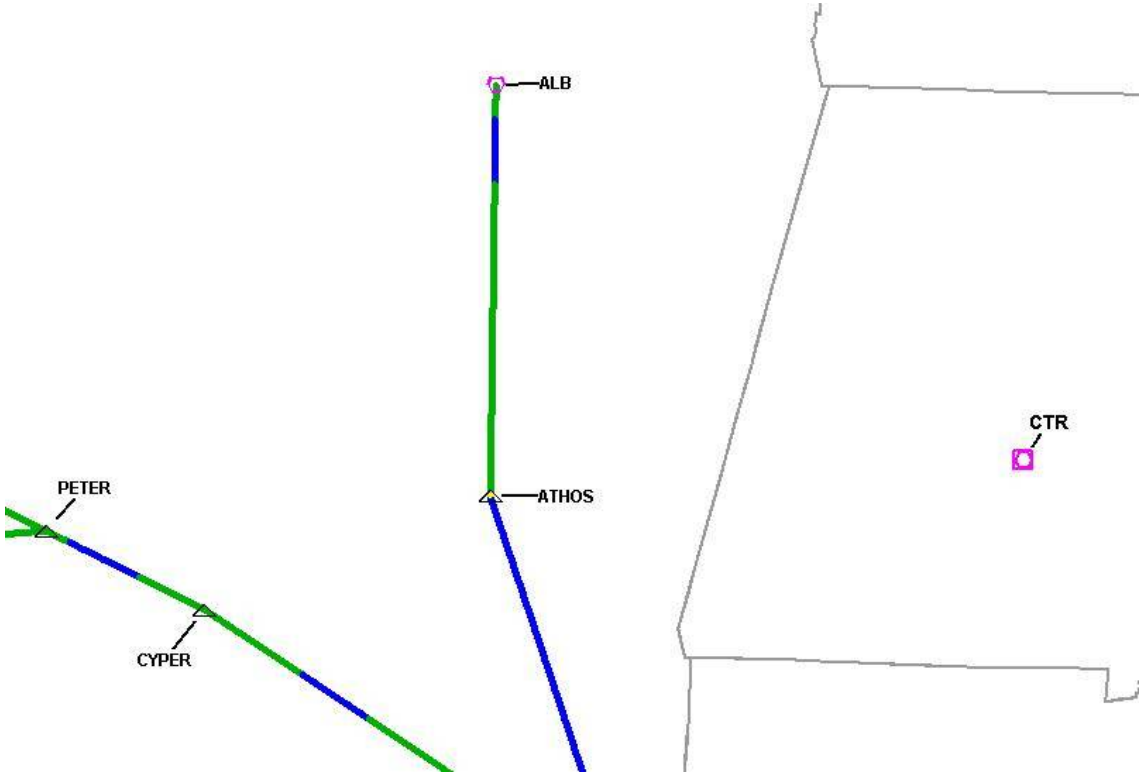
DME DME Assessment Results for DENNA1 path RAHKS_User_PETER

Graphic Depiction 1



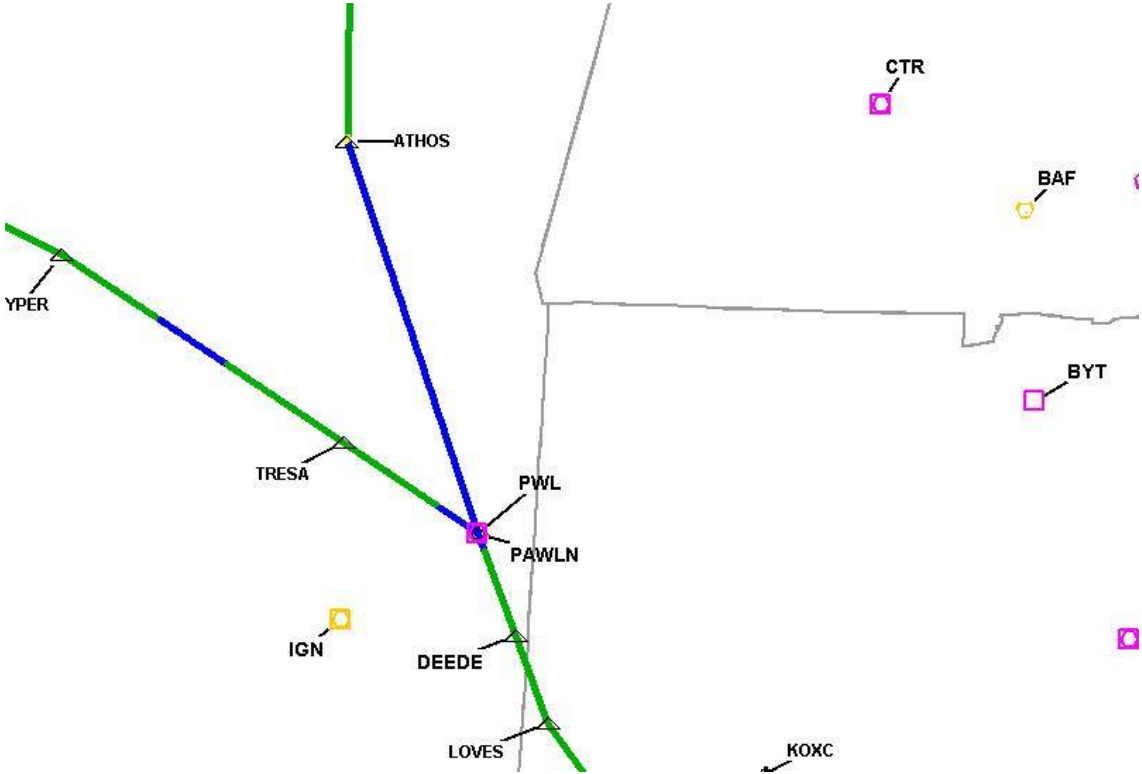
DME DME Assessment Results for DENNA1 path RAHKS_User_PETER

Graphic Depiction 2



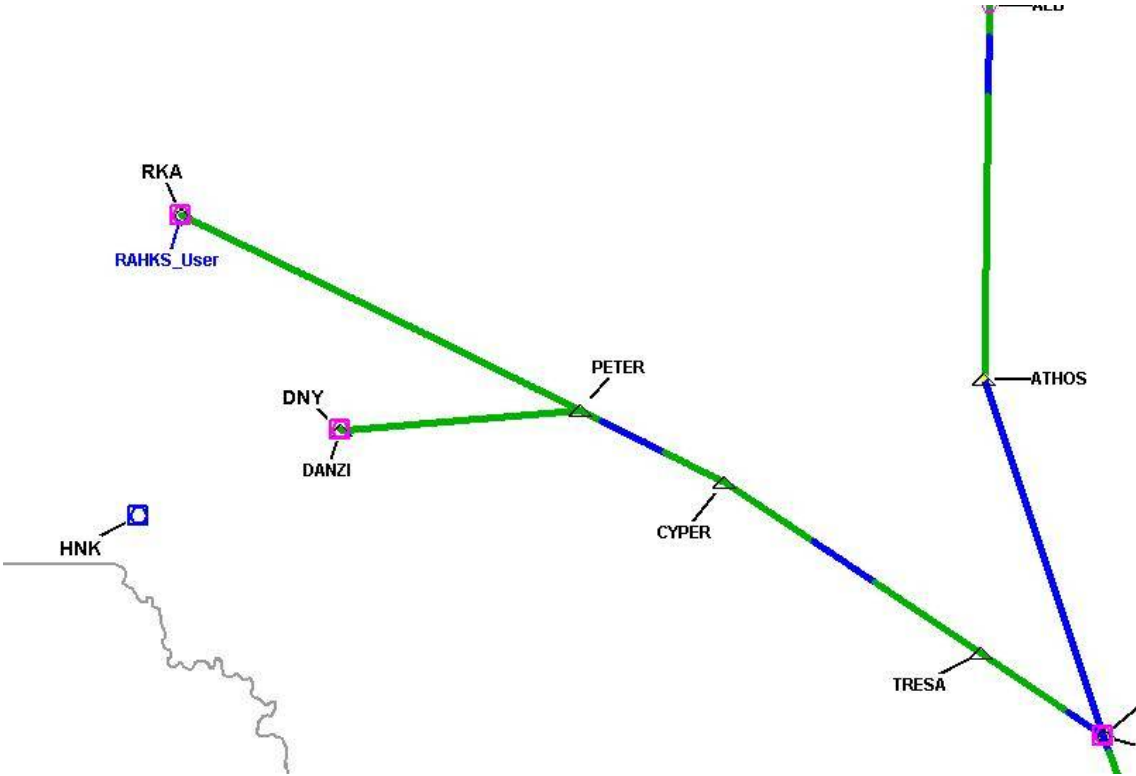
DME DME Assessment Results for DENNA1 path RAHKS_User_PETER

Graphic Depiction 3



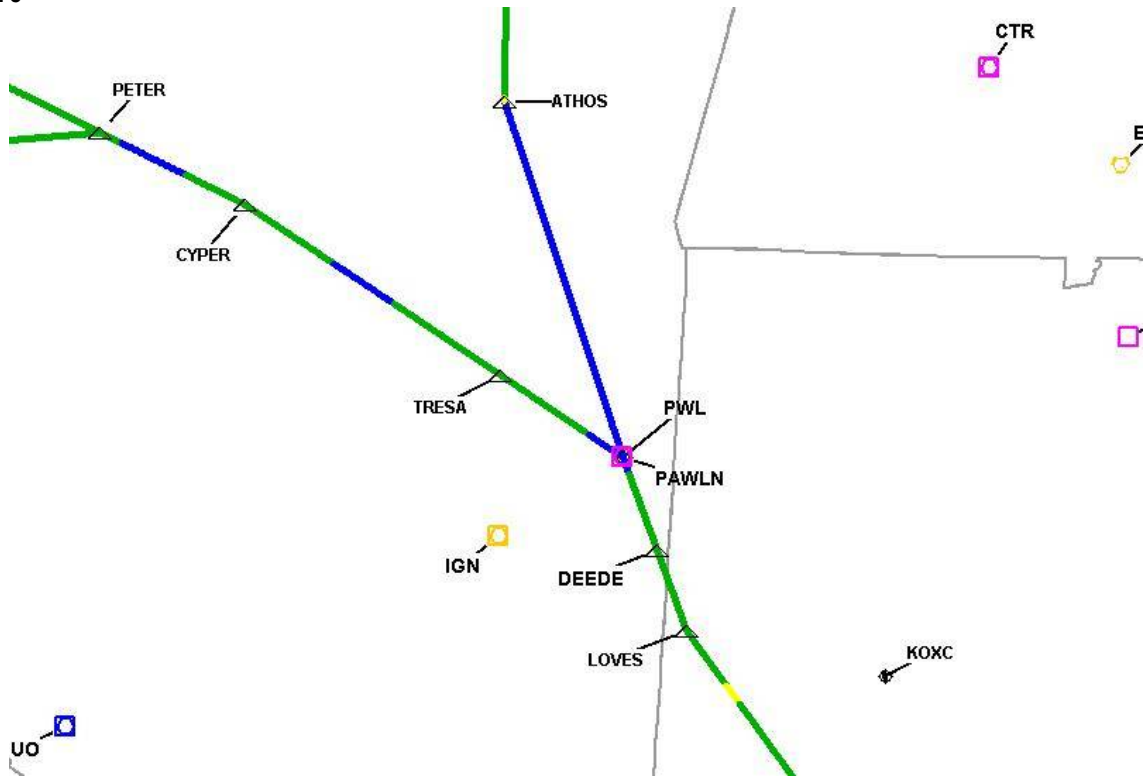
DME DME Assessment Results for DENNA1 path RAHKS_User_PETER

Graphic Depiction 4



DME DME Assessment Results for DENNA1 path RAHKS_User_PETER

Graphic Depiction 5



DME DME Assessment Results for DENNA1 path RAHKS_User_PETER

Graphic Depiction 6

