

Flight Procedures Cover Page	Task Action: FLIGHT CHECK	Task Type: IAP	Estimated Chart Date: 05/14/2026	APWS Task ID: 2EEF89C34D1A41D9978BE1AA2D1A700F	APWS Project ID: 0421C7517CCE4012B4A3A37CD9797519
Procedure: ILS OR LOC RWY 19R AMDT 3		Enroute: NO	Specialist: Stubblefield, Byron		Agreement Number:
Airport ID: KCLT			Airport City: CHARLOTTE		State: NC
Facility ID: RGS	Facility Type: ILS	Flight Inspection Remark Type: New FC Slot			

Procedure Comments:  
 PENDING RUNWAY AND AIRPORT DATA USED

RWY NUMBER CHANGE FROM 18R TO 19R.

KMZ: KCLT\_ILS\_OR\_LOC\_RWY\_19R\_AMDT\_3

POC: CASEY HILL, AJV-431, 405-954-0624

QUALITY  
20  
CHECKED

QUALITY  
38  
CHECKED

## FIPC BASIC FORM

<b>PROCEDURE:</b> ILS OR LOC RWY 19R AMDT 3		<b>AIRPORT NAME:</b> CHARLOTTE/DOUGLAS INTL		<b>AIRPORT ID:</b> KCLT	<b>SPECIAL CONTROL NO:</b> AP-02-189-26
<b>FAC ID:</b> RGS		<b>CITY:</b> CHARLOTTE		<b>ST:</b> NC	<b>ORIG CHART DATE:</b> 05/14/2026
<b>DFL TYPE:</b> PROC/A	<b>THIRD PARTY:</b> <input type="checkbox"/> YES	<b>EST. TIME ON SITE:</b> 0.4	<b>REIMB. NUMBER:</b> AC0721	<b>PTS TASK ID:</b> 2EEF89C34D1A41D9978BE1AA2D1A700F	

### PREFLIGHT NOTES

<b>REVIEWER:</b>	<b>DATE:</b>
<b>COMMENTS:</b>	<b>CHECK ONE:</b> <input type="checkbox"/> FLT CK REQ <input type="checkbox"/> NFCR <input type="checkbox"/> REJECT
	<input type="checkbox"/> YES <input type="checkbox"/> NO
	<b>CPV COMPLETE?</b> <input checked="" type="checkbox"/> X <input type="checkbox"/>

### PROCEDURE RESULTS

<b>INSPECTION DATE:</b> 03/27/2026	<b>CREW #:</b> VN588	<b>N #:</b> N67	<b>INSTRUMENT PROCEDURE STATUS:</b> <input checked="" type="checkbox"/> SAT <input type="checkbox"/> SAT W/CHANGES <input type="checkbox"/> UNSAT	<b>ARINC CODING:</b> <input type="checkbox"/> SAT <input type="checkbox"/> SAT/GOLD <input type="checkbox"/> UNSAT
<b>FLIGHT INSPECTOR SIGNATURE:</b> james r jones @ 03/27/2026 13:24		<b>PRINTED NAME:</b> JONES, JAMES ROBERT		<b>NOTAM INITIATED?</b> <input type="checkbox"/> YES <input checked="" type="checkbox"/> NO

**FLIGHT INSPECTOR REMARKS:**  
ILS or LOC RWY 19R, AMDT 3, Charlotte Douglas International, Charlotte, NC. SAT

### IN-FLIGHT OBSTACLE REPORT

<b>OBSTRUCTION ID #:</b>	<b>COORDINATES OR LOCATION:</b>	<b>GNSS ALTITUDE (MSL):</b>	<b>BAROMETRIC ALTITUDE (MSL):</b>	<b>HEIGHT ABOVE GROUND LEVEL:</b>
--------------------------	---------------------------------	-----------------------------	-----------------------------------	-----------------------------------

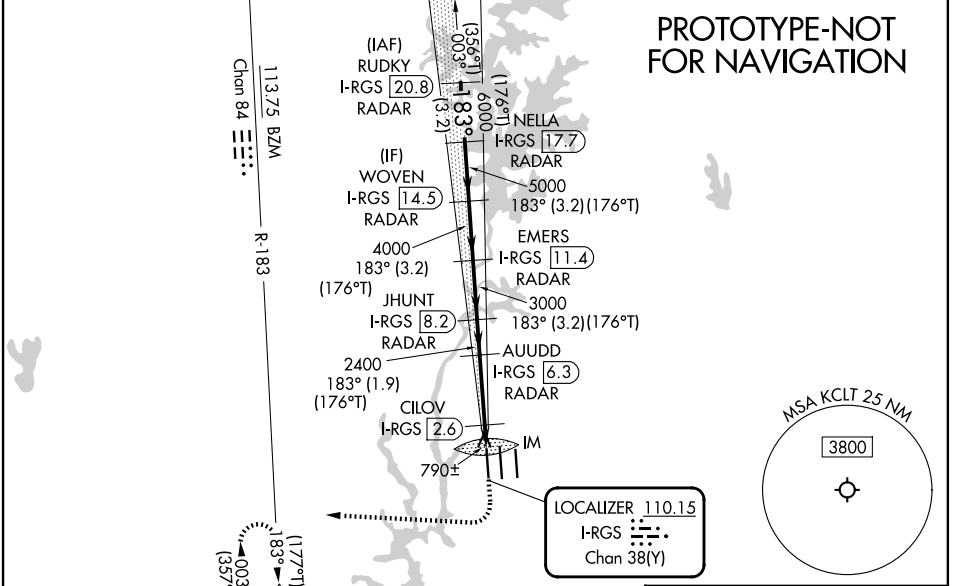
LOC/DME I-RGS <b>110.15</b> Chan <b>38</b> (Y)	APP CRS <b>183°</b>	Rwy Ldg TDZE <b>744</b> Apt Elev <b>748</b>	<b>9000</b>
--	------------------------	---	-------------

# ILS or LOC RWY 19R

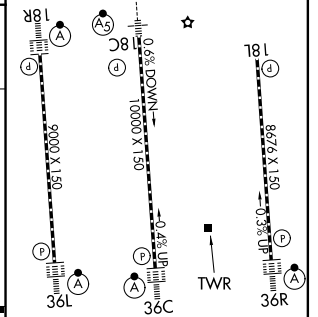
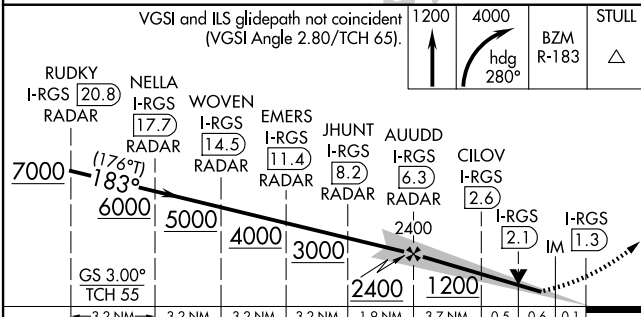
CHARLOTTE/DOUGLAS INTL (CLT)

DME or RADAR required.	<b>RADAR REQUIRED FOR PROCEDURE ENTRY.</b>	ALS-F-2	MISSED APPROACH: Climb to 1200 then climbing right turn to 4000 on heading 280° and on BZM VOR/DME R-183 to STULL/BZM 46.2 DME and hold, continue climb-in-hold to 4000.
<p>Simultaneous approach authorized. CILOV minimums: For inp ALS, increase S-LOC 19R Cats C/D visibility to RVR 4500.</p>			

D-ATIS <b>121.15</b>	CHARLOTTE APP CON	CHARLOTTE TOWER	GND CON
<b>128.325</b> (001°-119°)	<b>257.2</b> (180°-359°)	<b>118.1 257.8</b> (Rwys 18L-36R)	<b>121.8 348.6</b> (W)
<b>120.05</b> (120°-295°)	<b>307.8</b> (360°-179°)	<b>126.4 257.8</b> (Rwy 18C-36C)	<b>121.9 348.6</b> (E)
<b>134.75</b> (296°-360°)		<b>133.35 257.8</b> (Rwy 18R-36L)	



ELEV 748	<b>D</b>	TDZE 744
----------	----------	----------



CATEGORY	A	B	C	D
S-ILS 19R	944/18		200 (200-½)	
S-LOC 19R	1200/24	456 (500-½)	1200/45	456 (500-¾)
CILOV FIX MINIMUMS (DME REQUIRED)				
S-LOC 19R	1040/24		296 (300-½)	

LOC/DME I-RGS <b>110.15</b> Chan <b>38(Y)</b>	APP CRS <b>183°</b>	Rwy Ldg TDZE <b>744</b> Apt Elev <b>748</b>	<b>9000</b>
---	------------------------	---	-------------

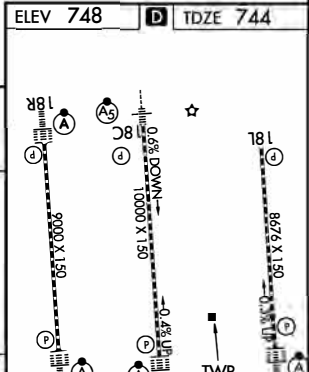
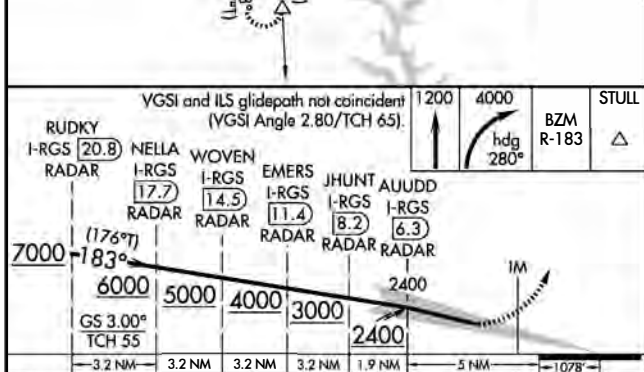
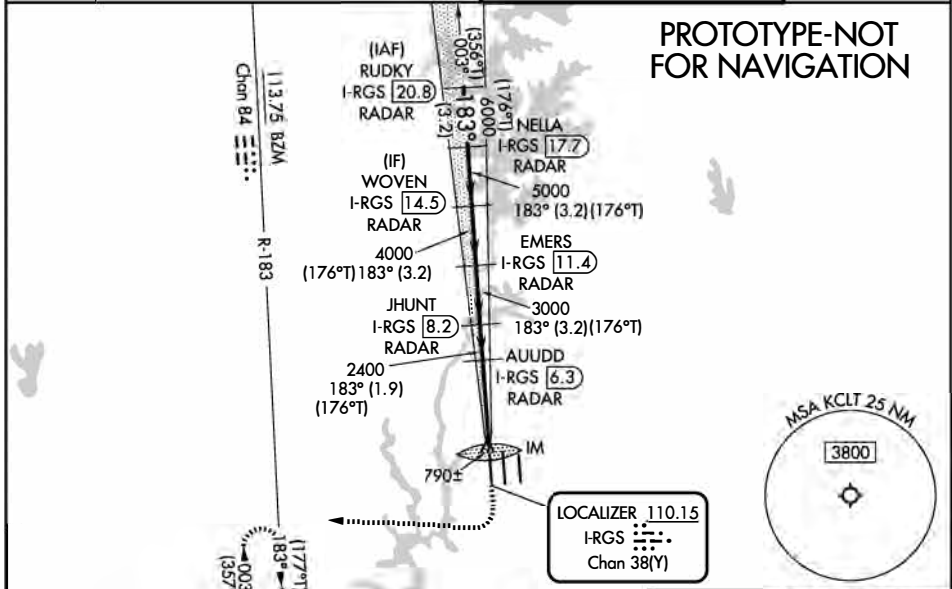
**ILS RWY 19R (SA CAT I)**  
CHARLOTTE/DOUGLAS INTL (CLT)

DME or RADAR required. RADAR REQUIRED FOR PROCEDURE ENTRY

ALSF-2 MISSED APPROACH: Climb to 1200 then climbing right turn to 4000 on heading 280° and on BZM VOR/DME R-183 to STULL/BZM 46.2 DME and hold, continue climb-in-hold to 4000.

Simultaneous approach authorized. Requires specific OPSEC, MSPEC, or LOA approval.

D-ATIS <b>121.15</b>	CHARLOTTE APP CON <b>128.325</b> (001°-119°) <b>120.05</b> (120°-295°) <b>134.75</b> (296°-360°)	<b>257.2</b> (180°-359°) <b>307.8</b> (360°-179°)	CHARLOTTE TOWER <b>118.1 257.8</b> (Rwys 18L-36R) <b>126.4 257.8</b> (Rwy 18C-36C) <b>133.35 257.8</b> (Rwy 18R-36L)	GND CON <b>121.8 348.6</b> (W) <b>121.9 348.6</b> (E)
-------------------------	---	--	---	---



CATEGORY	A	B	C	D
S-ILS 19R	RA 228/14 150 DA 894			

ELEV 748 TDZE 744

HIRL all rwys  
REIL Rwys 18L  
TDZL/RCLS Rwys 01L, 19R, 36C and 36R


**SA CATEGORY I ILS SPECIAL AIRCREW & AIRCRAFT CERTIFICATION REQUIRED**


LOC/DME I-RGS <b>110.15</b> Chan <b>38(Y)</b>	APP CRS <b>183°</b>	Rwy Ldg TDZE <b>744</b> Apt Elev <b>748</b>	<b>9000</b>
---	------------------------	---	-------------

# ILS RWY 19R (CAT II & III)

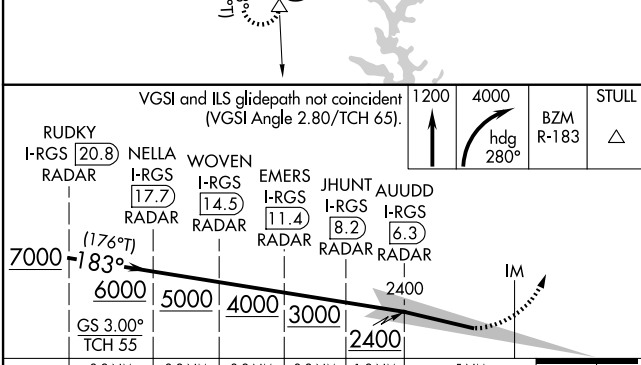
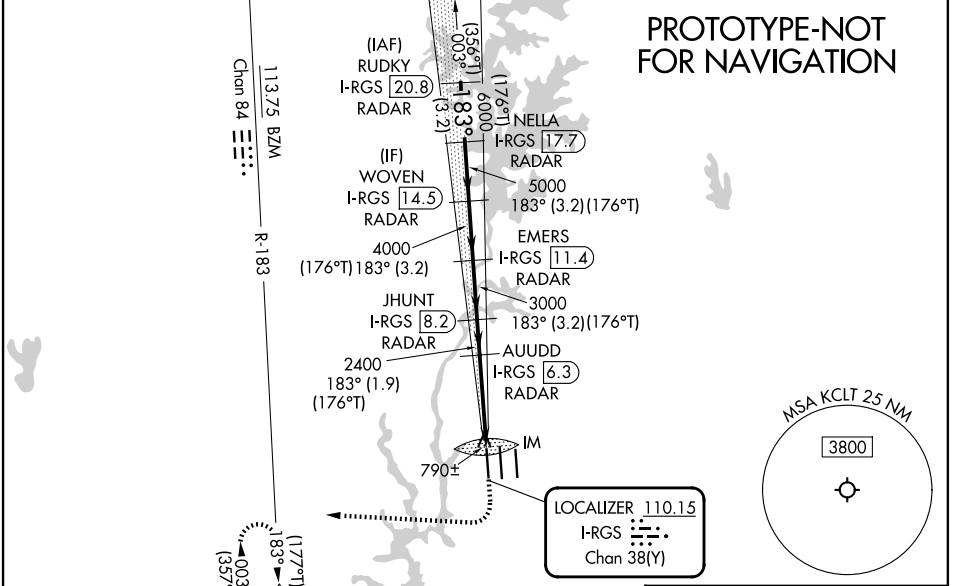
CHARLOTTE/DOUGLAS INTL (CLT)

DME or RADAR required. **RADAR REQUIRED FOR PROCEDURE ENTRY**

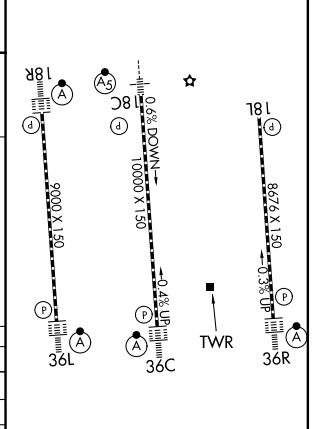
ALSF-2  MISSED APPROACH: Climb to 1200 then climbing right turn to 4000 on heading 280° and on BZM VOR/DME R-183 to STULL/BZM 46.2 DME and hold, continue climb-in-hold to 4000.

 Simultaneous approach authorized.

D-ATIS <b>121.15</b>	CHARLOTTE APP CON <b>128.325</b> (001°-119°) <b>120.05</b> (120°-295°) <b>134.75</b> (296°-360°)	<b>257.2</b> (180°-359°) <b>307.8</b> (360°-179°)	CHARLOTTE TOWER <b>118.1</b> <b>257.8</b> (Rwys 18L-36R) <b>126.4</b> <b>257.8</b> (Rwy 18C-36C) <b>133.35</b> <b>257.8</b> (Rwy 18R-36L)	GND CON <b>121.8</b> <b>348.6</b> (W) <b>121.9</b> <b>348.6</b> (E)
-------------------------	---	--	--	---



ELEV 748	<b>D</b>	TDZE 744
----------	----------	----------



CATEGORY	A	B	C	D
S-ILS 19R	CAT II RA 106/12 100 DA 844			
S-ILS 19R	CAT III RVR 06			

**CATEGORY II & III ILS SPECIAL AIRCREW & AIRCRAFT CERTIFICATION REQUIRED**

HIRL all rwys  
REIL Rwys 18L  
TDZL/RCLS Rwys 01L, 19R, 36C and 36R



LOC/DME I-RGS <b>110.15</b> Chan <b>38(Y)</b>	APP CRS <b>183°</b>	Rwy Ldg TDZE Apt Elev	<b>9000</b> <b>744</b> <b>748</b>
---	------------------------	-----------------------------	---

**OLD**

# ILS RWY 18R (SA CAT I)

CHARLOTTE/DOUGLAS INTL (CLT)

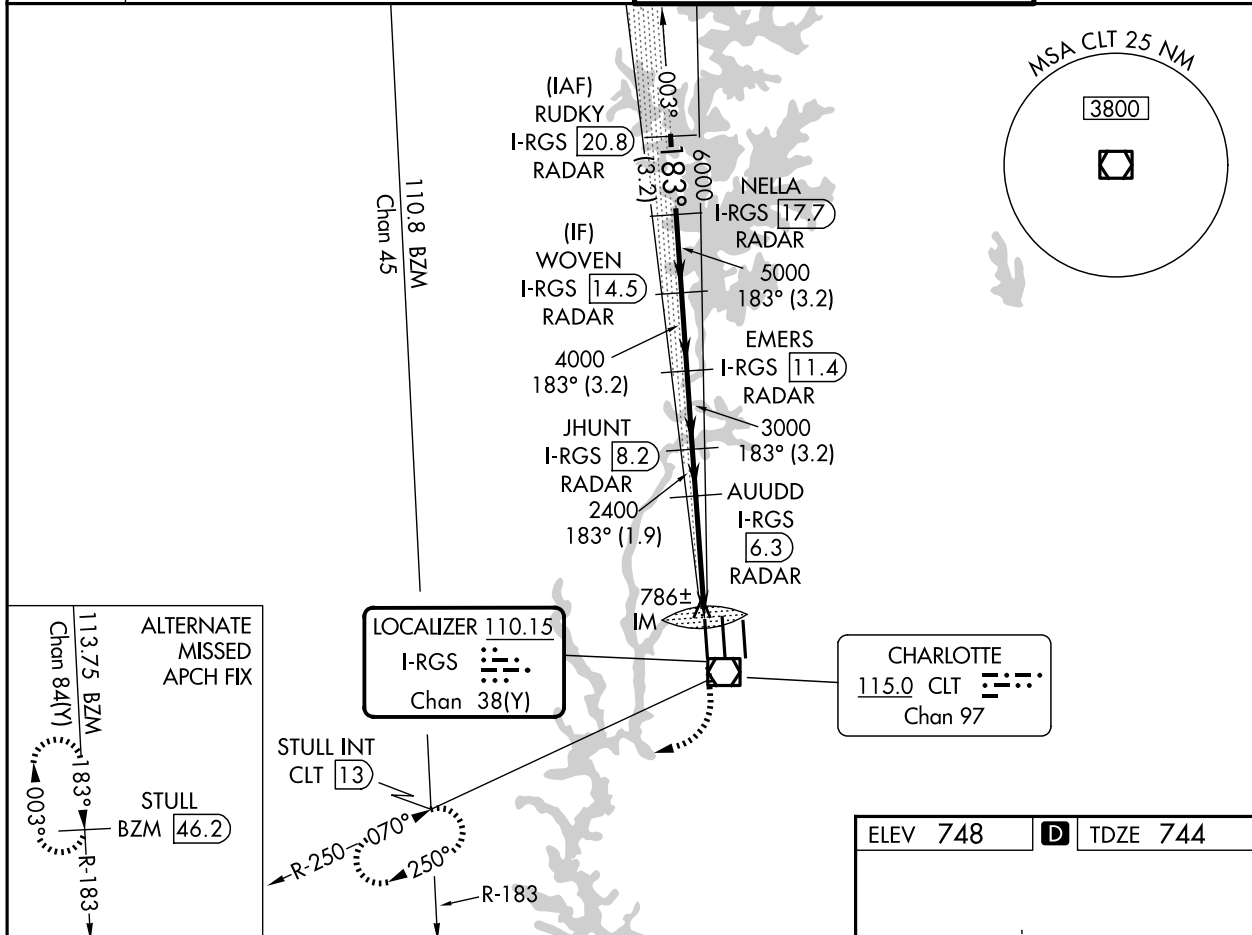
RADAR required for procedure entry. DME or RADAR required.

Simultaneous approach authorized.  
Requires specific OPSPEC, MSPEC or LOA approval and use of HUD to DH.

ALSF-2

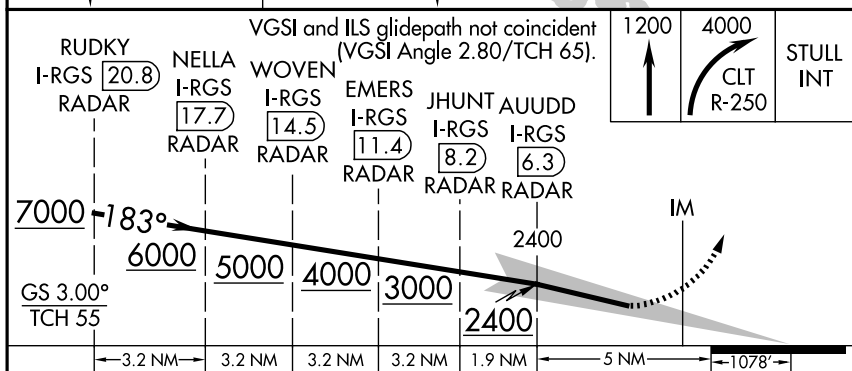
MISSED APPROACH: Climb to 1200 then climbing right turn to 4000 on CLT VOR/DME R-250 to STULL INT/CLT 13 DME and hold, continue climb-in-hold to 4000.

D-ATIS <b>121.15</b>	CHARLOTTE APP CON <b>128.325</b> (001°-119°) <b>120.05</b> (120°-295°) <b>134.75</b> (296°-360°)	<b>257.2</b> (180°-359°) <b>307.8</b> (360°-179°)	CHARLOTTE TOWER <b>118.1</b> <b>257.8</b> (Rwys 18L-36R) <b>126.4</b> <b>257.8</b> (Rwy 18C-36C) <b>133.35</b> <b>257.8</b> (Rwy 18R-36L)	GND CON <b>121.8</b> <b>348.6</b> (W) <b>121.9</b> <b>348.6</b> (E)
-------------------------	---	--	--	---

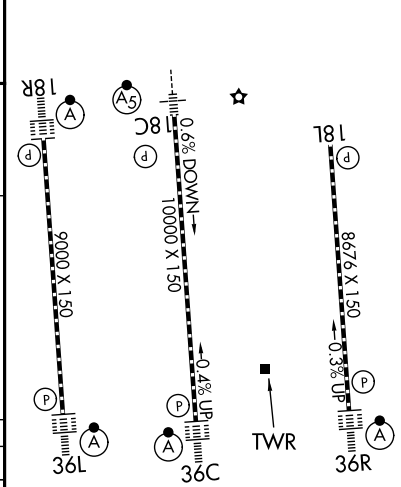


SE-2, 02 OCT 2025 to 30 OCT 2025

SE-2, 02 OCT 2025 to 30 OCT 2025



ELEV 748	<b>D</b>	TDZE 744
----------	----------	----------



CATEGORY	A	B	C	D
S-ILS 18R	RA 228/14 150 DA 894			

## SA CATEGORY I ILS SPECIAL AIRCREW & AIRCRAFT CERTIFICATION REQUIRED

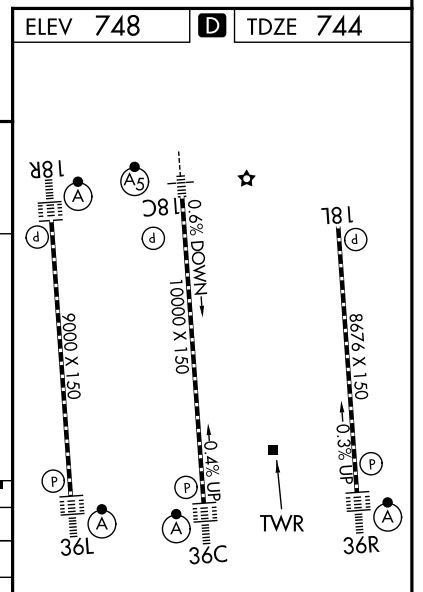
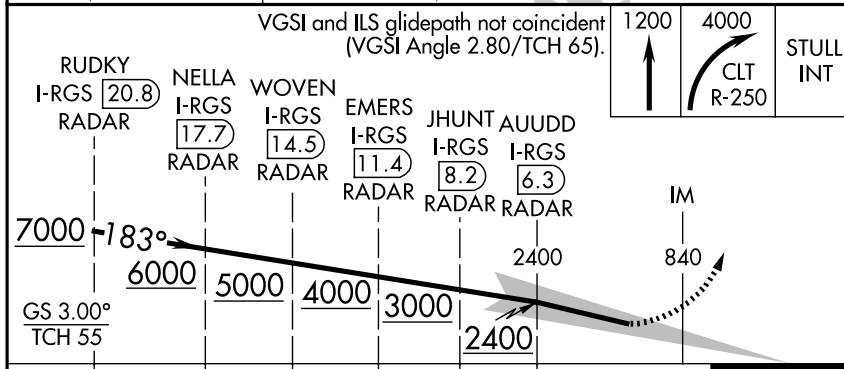
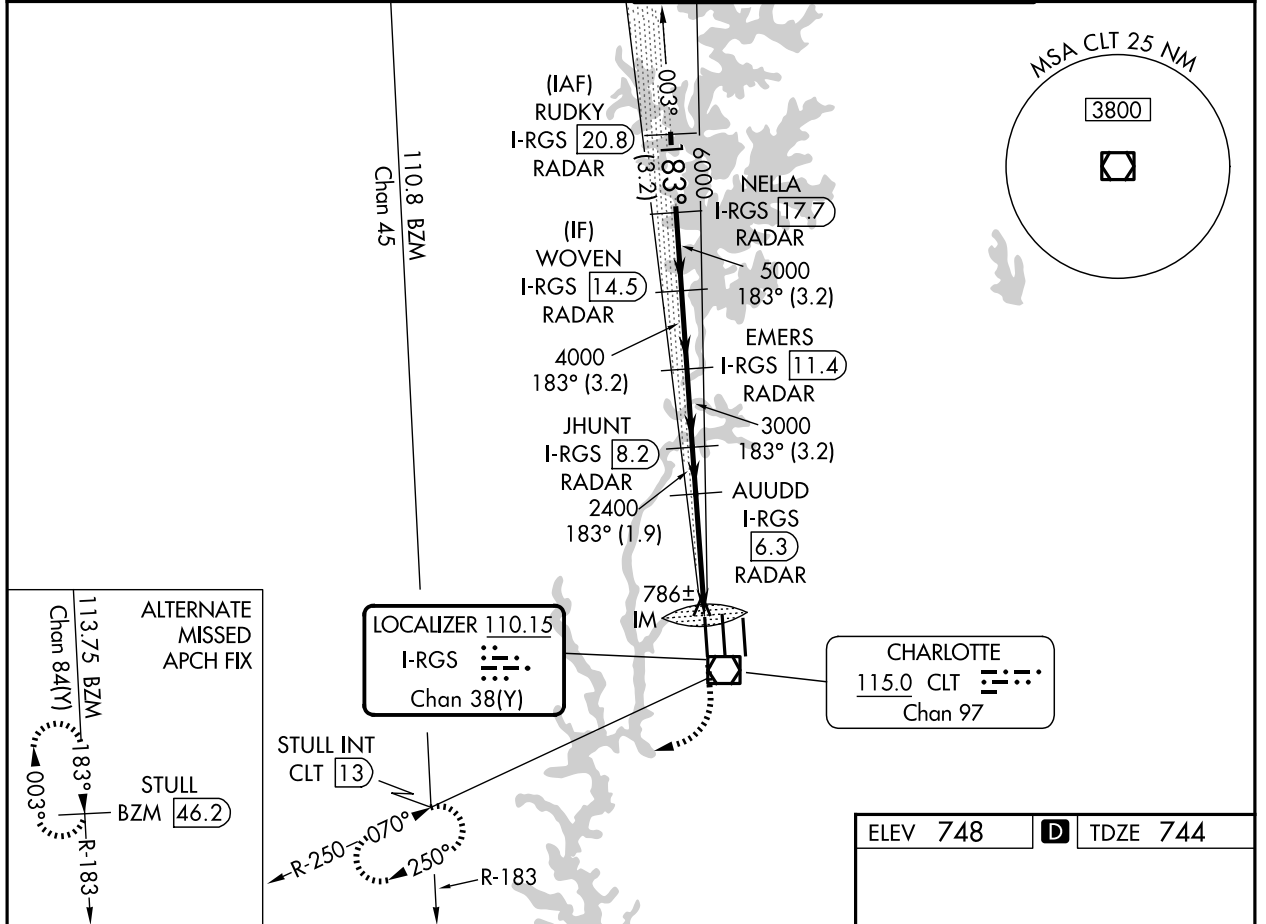
HIRL all Rwys  
REIL Rwys 18L and 23  
TDZ/CL Rwys 18R, 36L, 36C and 36R

LOC/DME I-RGS <b>110.15</b> Chan <b>38</b> (Y)	APP CRS <b>183°</b>	Rwy Ldg TDZE Apt Elev	<b>9000</b> <b>744</b> <b>748</b>
--	------------------------	-----------------------------	---

**OLD**

**ILS RWY 18R (CAT II & III)**  
CHARLOTTE/DOUGLAS INTL (CLT)

RADAR required for procedure entry. DME or RADAR required.		ALSF-2	MISSED APPROACH: Climb to 1200 then climbing right turn to 4000 on CLT VOR/DME R-250 to STULL INT/CLT 13 DME and hold, continue climb-in-hold to 4000.
Simultaneous approach authorized.			
D-ATIS <b>121.15</b>	CHARLOTTE APP CON <b>128.325</b> (001°-119°) <b>120.05</b> (120°-295°) <b>134.75</b> (296°-360°)	<b>257.2</b> (180°-359°) <b>307.8</b> (360°-179°)	CHARLOTTE TOWER <b>118.1</b> <b>257.8</b> (Rwys 18L-36R) <b>126.4</b> <b>257.8</b> (Rwy 18C-36C) <b>133.35</b> <b>257.8</b> (Rwy 18R-36L)
			GND CON <b>121.8</b> <b>348.6</b> (W) <b>121.9</b> <b>348.6</b> (E)



CATEGORY	A	B	C	D
S-ILS 18R	CAT II RA 106/12 100 DA 844			
S-ILS 18R	CAT III RVR 06			

**CATEGORY II & III ILS SPECIAL AIRCREW & AIRCRAFT CERTIFICATION REQUIRED**

HIRL all Rwys  
REIL Rwys 18L and 23  
TDZ/CL Rwys 18R, 36L, 36C and 36R

SE-2, 02 OCT 2025 to 30 OCT 2025

SE-2, 02 OCT 2025 to 30 OCT 2025