

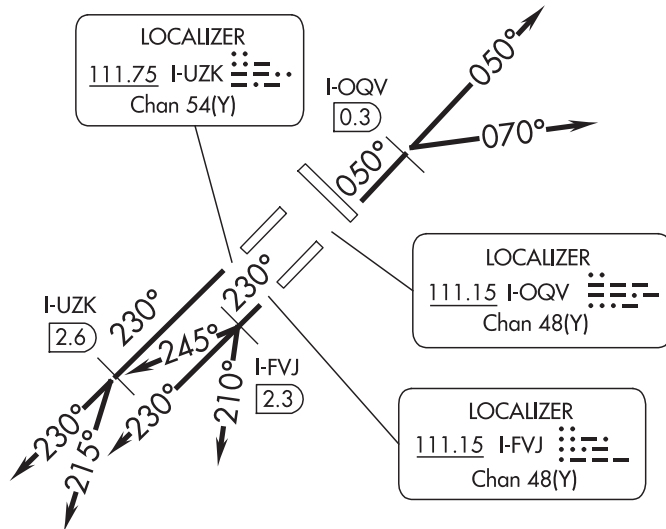
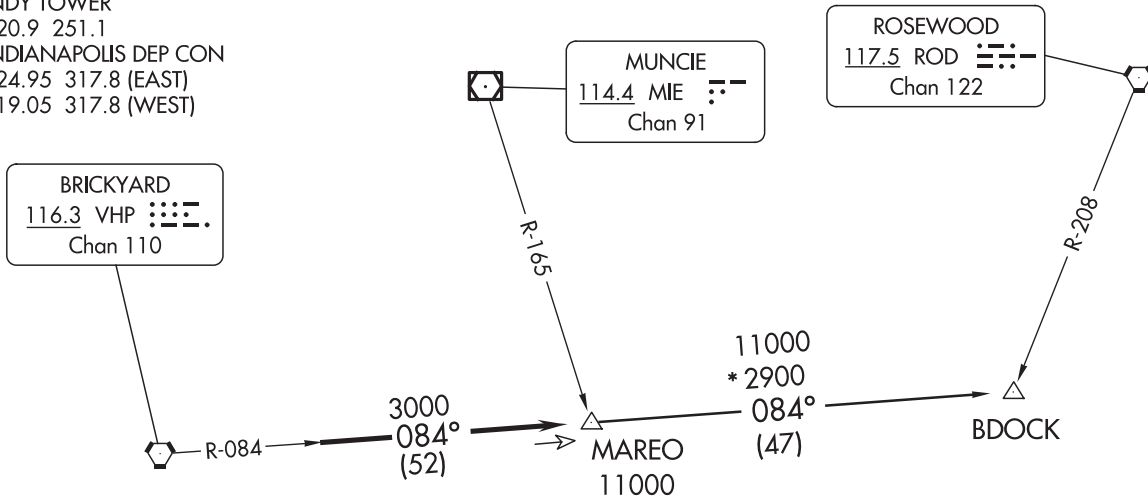
Flight Procedures Cover Page	Task Action: Cancellation	Task Type: SID	Estimated Chart Date: 05/14/2026	APWS Task ID: 2FAA54BCF7824265B519A7E2E78A2AA1	APWS Project ID: 22EA0654BB1F4F148F1F10A92F124413
Procedure: SID MAREO FIVE INDIANAPOLIS, IN KIND		Enroute: YES	Specialist: Dudzinski, Lisa		Agreement Number:
Airport ID: KIND			Airport City: INDIANAPOLIS		State: IN
Facility ID:	Facility Type:	Flight Inspection Remark Type:			
<p>Procedure Comments:</p> <p>PROCEDURE CANCELLED AND REPLACED WITH MAREO ONE (RNAV).</p> <p>CONTACT: ALLAN WILL TRAINING SUB TEAM MANAGER AJV-A33 405-954-6103.</p>					



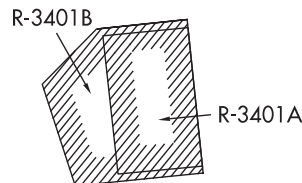
D-ATIS  
 134.25  
 CLNC DEL  
 128.75 251.1  
 CPDLC  
 GND CON  
 121.9  
 INDY TOWER  
 120.9 251.1  
 INDIANAPOLIS DEP CON  
 124.95 317.8 (EAST)  
 119.05 317.8 (WEST)

TAKEOFF MINIMUMS  
 Rwys 5L/R, 14, 23L/R, 32: Standard.

**TOP ALTITUDE:**  
**(JETS) 5000**  
**(PROPS) 3000**



- NOTE: RADAR required.
- NOTE: Select appropriate localizer/DME frequency/channel prior to departure.
- NOTE: Turbojets accelerate to 250K until reaching 10000, if unable advise ATC.
- NOTE: Assigned to aircraft with a requested altitude of 11000 or above.



(NARRATIVE ON FOLLOWING PAGE)

NOTE: Chart not to scale.

EC-2, 30 OCT 2025 to 27 NOV 2025

EC-2, 30 OCT 2025 to 27 NOV 2025



DEPARTURE ROUTE DESCRIPTION

TAKEOFF RWY 5R (TURBOJETS ONLY-DME REQUIRED): Climb on heading 050° to I-OQV 0.3 DME, then on assigned heading 050° or 070°. Maintain 5000.

Thence . . . .

TAKEOFF RWY 23R (TURBOJETS ONLY-DME REQUIRED): Climb on heading 230° to I-UZK 2.6 DME, then on assigned heading 230° or 215°. Maintain 5000.

Thence . . . .

TAKEOFF RWY 23L (TURBOJETS ONLY-DME REQUIRED): Climb on heading 230° to I-FVJ 2.3 DME, then on assigned heading 210°, 230°, or 245°. Maintain 5000.

Thence . . . .

TAKEOFF ALL OTHER RWYS (TURBOJETS ONLY): Climb on assigned heading. Maintain 5000. Thence . . . .

TAKEOFF ALL RWYS (PROPELLER ONLY): Climb on assigned heading. Maintain 3000. Thence . . . .

DEPARTING ALL OTHER AUTHORIZED RUNWAYS: Climb on assigned heading to assigned altitude. Thence . . . .

. . . . expect RADAR vectors to join VHP R-084 to MAREO INT then via transition or assigned route. Expect clearance to requested altitude ten minutes after departure.

BDOCK TRANSITION (MAREO5.BDOCK): From over MAREO INT via VHP R-084 to BDOCK INT.

EC-2, 30 OCT 2025 to 27 NOV 2025

EC-2, 30 OCT 2025 to 27 NOV 2025