

DME ESVs

#	Name	Lat/Lon	MAGVAR	Range	Elevation [ft]	Frequency	Replaces	Status
None								

DME DME Assessment Results for MAREO1 path BDOCK_UKATS

Results Summary

Flyability:	Completed
DME/DME:	Completed - No Critical DMEs
Name:	Lisa A-CTR Thrysoe
Project File:	C:\Users\Lisa A-CTR Thrysoe\OneDrive - Federal Aviation Administration\Desktop\DME DME Screening\KIND\KIND MAREO1 SID\MAREO1 DME 250728lu.tgs
Output File:	C:\Users\Lisa A-CTR Thrysoe\OneDrive - Federal Aviation Administration\Desktop\DME DME Screening\KIND\KIND MAREO1 SID\KIND [IFPA] MAREO1 20250728_1134 EDT\BDOCK_UKATS\KIND MAREO1 SID BDOCK UKATS 20250728_1134 EDT.pdf
Procedure Name:	MAREO1
Software: DmeDmePlugin:	7.5.1
Date/Time:	07/28/2025 11:34 EDT
Databases:	MITRE 3DEP 3 arcsec

Failures

No Failures

Warnings

No Warnings

Informational

No Informational

Notes For Flight Check

None

Flight Plan

Name	Type	Lat/Lon	Altitude (ft)	VNAV Mode	Ground Speed (kts)	Turn Type	Leg Type
BDOCK	WP	N39° 56' 06.0000", W084° 14' 01.2000"	3000	VNAV	200	FLY_BY	TF
UKATS	WP	N40° 08' 04.4800", W082° 37' 12.2000"	7000	VNAV	200	FLY_BY	TF

Flyability

Flight Type:	SID
Selected Airport:	KIND [IFPA]
Climb Gradient:	None assigned
Speeds:	130 at the Runway DER
	145 at the end of the VA or VI leg
	200 Ground Speed to 11000 FT
	240 Ground Speed to 18000 FT
	260 Ground Speed to 24000 FT
	340 Ground Speed above 24000 FT
Descent During a Turn:	Allowed
VNAV Mode:	Flight Plan

DME DME Assessment Results for MAREO1 path BDOCK_UKATS

DME/DME	
RNP:	RNP 2
Flight Mode:	Manual
Line of Sight (DTED Level 0 Max):	Evaluated
Inertial Drift:	Enabled
Initial Drift:	0.558 NM
INS Drift Rate:	8.0 NM/Hour
Range Mode:	OSV
RNP Edges:	Evaluated
Min DME Range:	3.0 NM
DME Types:	DME, VOR-DME, VORTAC, TACAN
DME Include Angles:	30 to 150
Critical DMEs:	Allowed
DoD Facilities:	Not included
Foreign Facilities:	Not included
High DMEs:	Included
Low DMEs:	Included
Terminal DMEs:	Included
Flight Check DMEs:	Not selected
Higher Altitudes:	Not Evaluated
Near Maximum Altitude:	Not Evaluated
Automatic ESVs:	Not enabled
Disabled DMEs:	None

DME/DME (Continued)										
DMEs Used										
#	Name	Lat/Lon	MAGVAR	Range	Type	Source	Critical	Status	Time	Distance
1	DQN	N40° 00' 59.1995", W084° 23' 48.8332"	1.0 W	40	L		NO	Enabled	42.8 %	42.8 %
2	BSV	N40° 44' 26.5430", W081° 25' 55.6216"	4.0 W	130	DL		NO	Enabled	16.3 %	16.3 %
3	SGH	N39° 50' 11.5473", W083° 50' 41.8397"	-0.0 E	25	T		NO	Enabled	55.7 %	55.7 %
4	ROD	N40° 17' 16.0830", W084° 02' 35.1471"	5.0 W	130	H		NO	Enabled	59.4 %	59.4 %
5	APE	N40° 09' 03.8258", W082° 35' 17.8849"	6.0 W	130	H		NO	Enabled	3.3 %	3.3 %
6	ZZV	N39° 56' 27.0911", W081° 53' 33.3687"	6.0 W	130	DH		NO	Enabled	16.3 %	16.3 %
7	RID	N39° 45' 18.0289", W084° 50' 19.7836"	0.0 E	40	L		NO	Enabled	13.6 %	13.6 %
8	DJB	N41° 21' 29.0339", W082° 09' 43.0873"	5.0 W	130	DH		NO	Enabled	11 %	11 %

Flight Check DME Selection						
Distance [NM]	Selected DMEs					Alternate
0.0	ROD	SGH	DQN	RID		
10.3	ROD	DQN	SGH			
10.8	ROD	DQN				
13.6	ROD	DQN	SGH			
32.3	ROD	SGH				
44.8						
63.0	ZZV	BSV				
67.0	ZZV	DJB	APE	BSV		
69.6	ZZV	DJB	BSV			

Inertial Drift Segments			
#	Start Location	End Location	Length [NM]
1	N40° 03' 22.8195", W083° 16' 32.4276"	N40° 06' 12.9099", W082° 53' 01.2311"	18.2744

DME DME Assessment Results for MAREO1 path BDOCK_UKATS

Available DMEs by Waypoints

Waypoint Before	Waypoint After	DME List	Suggested DMEs
BDOCK	UKATS	DQN, BSV, SGH, ROD, APE, ZZV, RID, DJB	

User Data Files

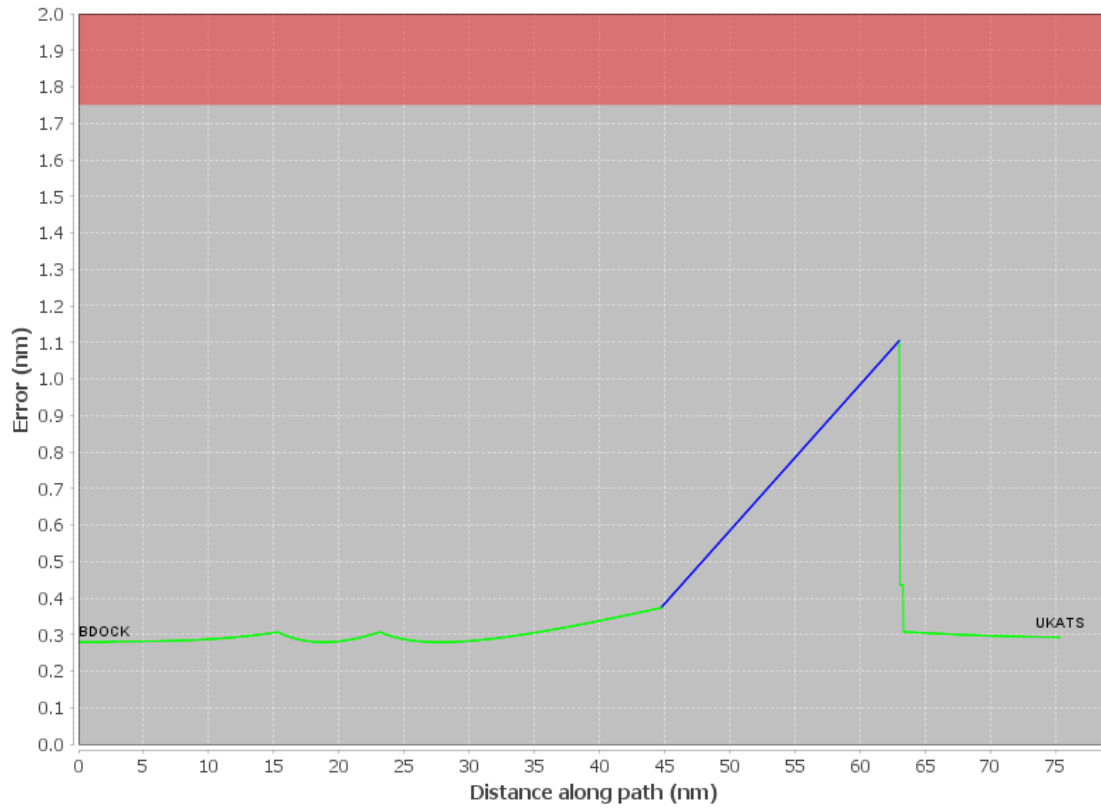
#	File Name
	None

User DMEs

#	Name	Lat/Lon	MAGVAR	Range	Elevation [ft]	Frequency	Replaces	Status
1	SGH FAA 803441-18 SGH	N39° 50' 11.5473", W083° 50' 41.8397"	-0.0 E	25	1046.4	113.2	SGH FAA 803441-18	
	ESV:	Bearing [True]: 5.0° to 71.0° Bearing [Mag]: 5.0° to 71.0°				Arc Distance: Out to 53.0 NM Altitude: 3900.0 to 16000.0 ft		

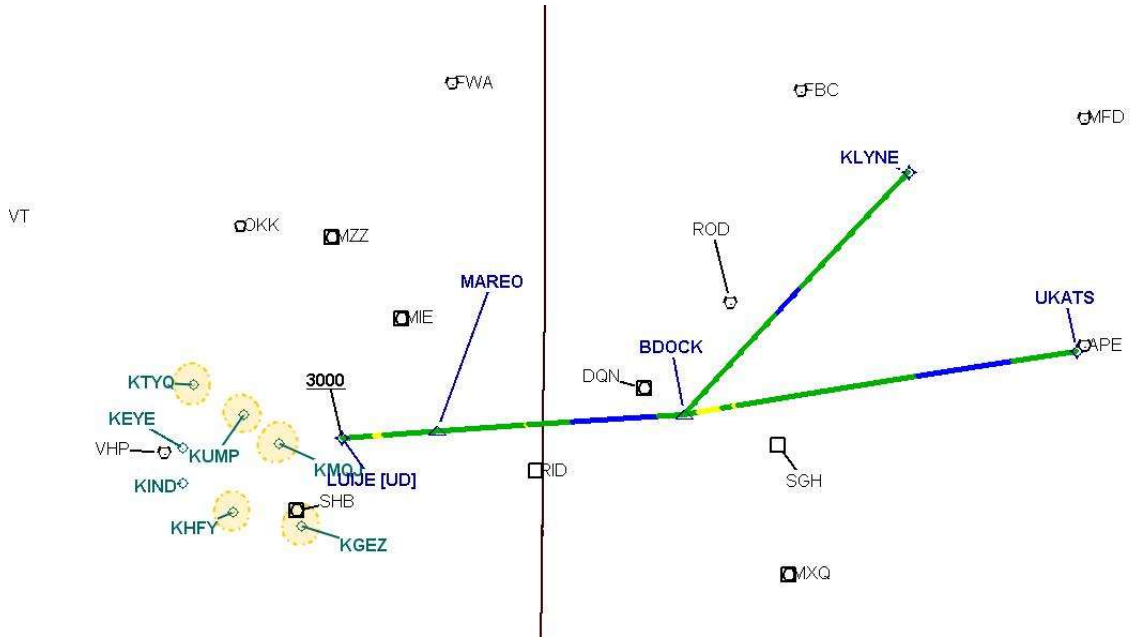
DME DME Assessment Results for MAREO1 path BDOCK_UKATS

DME Error



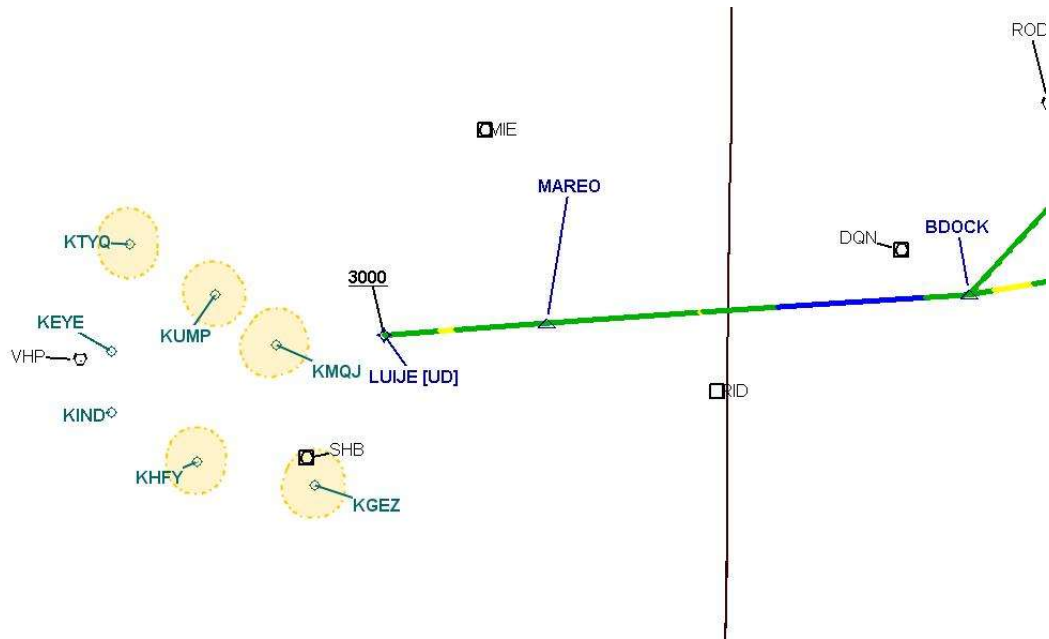
DME DME Assessment Results for MAREO1 path BDOCK_UKATS

Graphic Depiction 1



DME DME Assessment Results for MAREO1 path BDOCK_UKATS

Graphic Depiction 2



DME DME Assessment Results for MAREO1 path LUIJE_KLYNE

Results Summary

Flyability:	Completed
DME/DME:	Completed - No Critical DMEs
Name:	Lisa A-CTR Thrysoe
Project File:	C:\Users\Lisa A-CTR Thrysoe\OneDrive - Federal Aviation Administration\Desktop\DME DME Screening\KIND\KIND MAREO1 SID\MAREO1 DME 250728lu.tgs
Output File:	C:\Users\Lisa A-CTR Thrysoe\OneDrive - Federal Aviation Administration\Desktop\DME DME Screening\KIND\KIND MAREO1 SID\KIND [IFPA] MAREO1 20250728_1134 EDT\LUIJE_KLYNE\KIND MAREO1 SID LUIJE KLYNE 20250728_1134 EDT.pdf
Procedure Name:	MAREO1
Software: DmeDmePlugin:	7.5.1
Date/Time:	07/28/2025 11:34 EDT
Databases:	MITRE 3DEP 3 arcsec

Failures

No Failures

Warnings

No Warnings

Informational

No Informational

Notes For Flight Check

None

Flight Plan

Name	Type	Lat/Lon	Altitude (ft)	VNAV Mode	Ground Speed (kts)	Turn Type	Leg Type
LUIJE	WP	N39° 51' 37.3092", W085° 38' 16.6082"	3000	VNAV	200	FLY_BY	TF
MAREO	WP	N39° 52' 58.0700", W085° 14' 53.7000"	3000	VNAV	200	FLY_BY	TF
BDOCK	WP	N39° 56' 06.0000", W084° 14' 01.2000"	3000	VNAV	200	FLY_BY	TF
KLYNE	WP	N40° 41' 54.4600", W083° 18' 44.1900"	3200	VNAV	200	FLY_BY	TF

Flyability

Flight Type:	SID
Selected Airport:	KIND [IFPA]
Climb Gradient:	None assigned
Speeds:	130 at the Runway DER
	145 at the end of the VA or VI leg
	200 Ground Speed to 11000 FT
	240 Ground Speed to 18000 FT
	260 Ground Speed to 24000 FT
	340 Ground Speed above 24000 FT
Descent During a Turn:	Allowed
VNAV Mode:	Flight Plan

DME DME Assessment Results for MAREO1 path LUIJE_KLYNE

DME/DME	
RNP:	RNP 2
Flight Mode:	Manual
Line of Sight (DTED Level 0 Max):	Evaluated
Inertial Drift:	Enabled
Initial Drift:	0.558 NM
INS Drift Rate:	8.0 NM/Hour
Range Mode:	OSV
RNP Edges:	Evaluated
Min DME Range:	3.0 NM
DME Types:	DME, VOR-DME, VORTAC, TACAN
DME Include Angles:	30 to 150
Critical DMEs:	Allowed
DoD Facilities:	Not included
Foreign Facilities:	Not included
High DMEs:	Included
Low DMEs:	Included
Terminal DMEs:	Included
Flight Check DMEs:	Not selected
Higher Altitudes:	Not Evaluated
Near Maximum Altitude:	Not Evaluated
Automatic ESVs:	Not enabled
Disabled DMEs:	None

DME/DME (Continued)										
DMEs Used										
#	Name	Lat/Lon	MAGVAR	Range	Type	Source	Critical	Status	Time	Distance
1	DQN	N40° 00' 59.1995", W084° 23' 48.8332"	1.0 W	40	L		NO	Enabled	46.5 %	46.5 %
2	SGH	N39° 50' 11.5473", W083° 50' 41.8397"	-0.0 E	25	T		NO	Enabled	20.3 %	20.3 %
3	ROD	N40° 17' 16.0830", W084° 02' 35.1471"	5.0 W	130	H		NO	Enabled	45.8 %	45.9 %
4	FBC	N40° 57' 19.2018", W083° 45' 21.6886"	2.0 W	40	L		NO	Enabled	23.3 %	23.3 %
5	MIE	N40° 14' 14.2533", W085° 23' 38.5315"	3.0 W	40	L		NO	Enabled	34.3 %	34.2 %
6	MFD	N40° 52' 07.0036", W082° 35' 27.4614"	3.0 W	40	L		NO	Enabled	3.3 %	3.3 %
7	SHB	N39° 37' 57.1525", W085° 49' 27.5388"	1.0 E	130	DH		NO	Enabled	27.8 %	27.7 %
8	RID	N39° 45' 18.0289", W084° 50' 19.7836"	0.0 E	40	L		NO	Enabled	45.1 %	45.1 %
9	MZZ	N40° 29' 35.9904", W085° 40' 45.3000"	3.0 W	40	L		NO	Enabled	1.4 %	1.4 %
10	VHP	N39° 48' 53.0246", W086° 22' 02.9992"	1.0 E	130	H		NO	Enabled	4.9 %	4.9 %

DME DME Assessment Results for MAREO1 path LUIJE_KLYNE

Flight Check DME Selection						
Distance [NM]	Selected DMEs					Alternate
0.0	MIE	RID	SHB	VHP		
6.1	MIE	RID	MZZ	VHP	SHB	
6.3	MIE	RID	MZZ	SHB		
7.9	MIE	RID	SHB			
18.8	MIE	DQN	SHB	RID		
35.4	DQN	RID	MIE			
43.4	MIE	RID	ROD	DQN		
43.7						
60.1	ROD	SGH				
60.5	DQN	RID	ROD	SGH		
74.3	ROD	DQN	SGH			
86.0	ROD	DQN				
91.2						
97.7	FBC	ROD	DQN			
101.5	FBC	ROD				
123.1	FBC	ROD	MFD			
124.8	FBC	MFD				

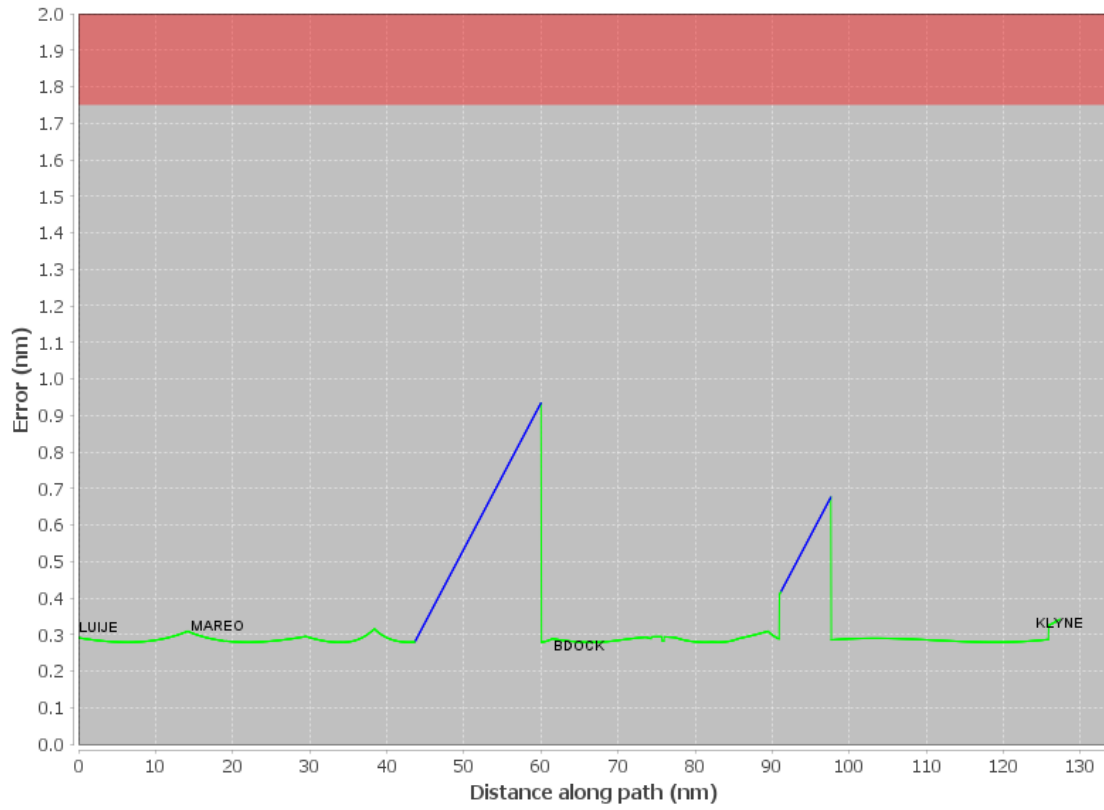
Inertial Drift Segments			
#	Start Location	End Location	Length [NM]
1	N39° 54' 44.6594", W084° 41' 39.7578"	N39° 55' 47.7344", W084° 20' 25.7017"	16.3707
2	N40° 15' 23.0226", W083° 50' 57.8554"	N40° 20' 09.7107", W083° 45' 12.1954"	6.4984

Available DMEs by Waypoints			
Waypoint Before	Waypoint After	DME List	Suggested DMEs
LUIJE	MAREO	MIE, SHB, RID, MZZ, VHP	
MAREO	BDOCK	DQN, SGH, ROD, MIE, SHB, RID	
BDOCK	KLYNE	DQN, SGH, ROD, FBC, MFD, RID	

User Data Files								
#	File Name							
	None							
User DMEs								
#	Name	Lat/Lon	MAGVAR	Range	Elevation [ft]	Frequency	Replaces	Status
1	SGH FAA 803441-18 SGH	N39° 50' 11.5473", W083° 50' 41.8397"	-0.0 E	25	1046.4	113.2	SGH FAA 803441-18	
	ESV:	Bearing [True]: 5.0° to 71.0° Bearing [Mag]: 5.0° to 71.0°				Arc Distance: Out to 53.0 NM Altitude: 3900.0 to 16000.0 ft		

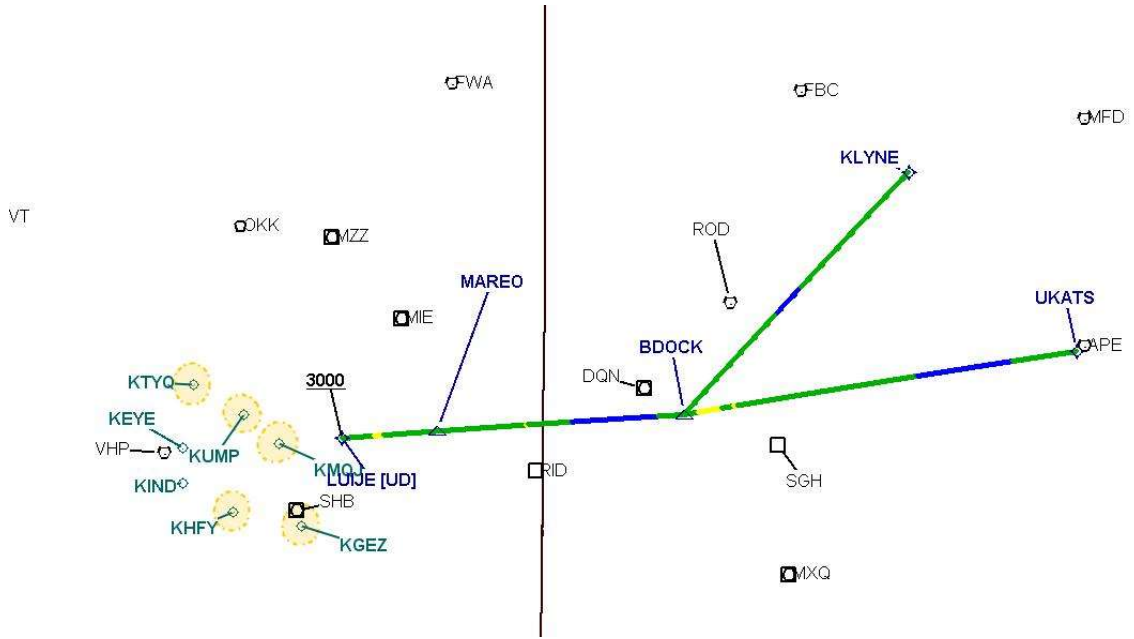
DME DME Assessment Results for MAREO1 path LUIJE_KLYNE

DME Error



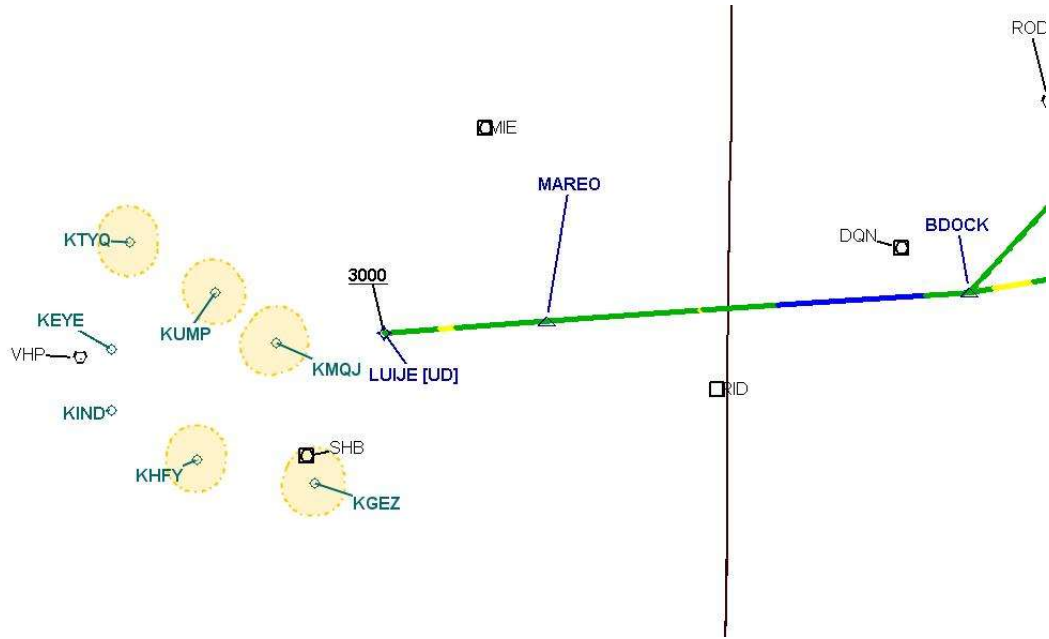
DME DME Assessment Results for MAREO1 path LUIJE_KLYNE

Graphic Depiction 1



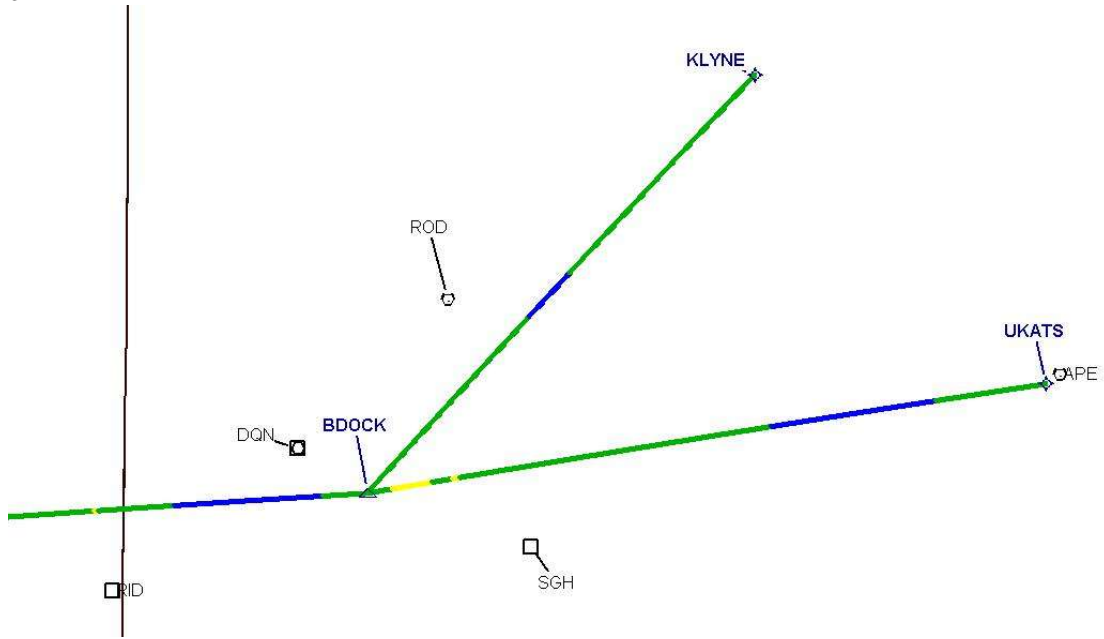
DME DME Assessment Results for MAREO1 path LUIJE_KLYNE

Graphic Depiction 2



DME DME Assessment Results for MAREO1 path LUIJE_KLYNE

Graphic Depiction 3



DME DME Assessment Results for MAREO1 path BDOCK_UKATS

Graphic Depiction 3

