

Flight Procedures Cover Page	Task Action: P-NOTAM	Task Type: IAP	Estimated Chart Date: 10/29/2026	APWS Task ID: 30374C8CABAA4346BE365DB146E7247E	APWS Project ID: FECE920ED6664D2C95CDF77C7B926A06
Procedure: RNAV (GPS) RWY 36 AMDT 2B		Enroute: NO	Specialist: Dunn, Timothy		Agreement Number:
Airport ID: KDMO			Airport City: SEDALIA		State: MO
Facility ID:	Facility Type:	Flight Inspection Remark Type:			

**Procedure Comments:**  
 PROCESSED IAW TECHNICAL SUPPORT GROUP (AJF-17) MEMO DATED 07/07/2021 GUIDANCE FOR PROCEDURAL CHANGES REQUIRING FLIGHT INSPECTION/VALIDATION.  
 Clears NOTAM 5/0945.  
 Contact Robert Hamilton 405-954-4608.





SEDALIA, MISSOURI

AL-5584 (FAA)

19171

WAAS CH <b>60913</b> <b>W36A</b>	APP CRS <b>359°</b>	Rwy Idg <b>5500</b> TDZE <b>902</b> Apt Elev <b>910</b>
--	------------------------	---

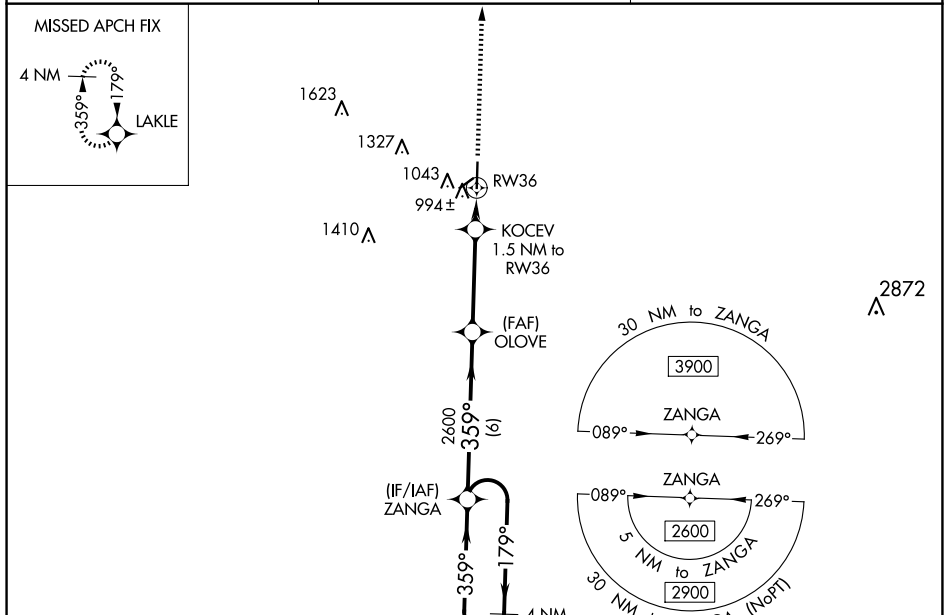
# RNAV (GPS) RWY 36

SEDALIA RGNL (DMO)

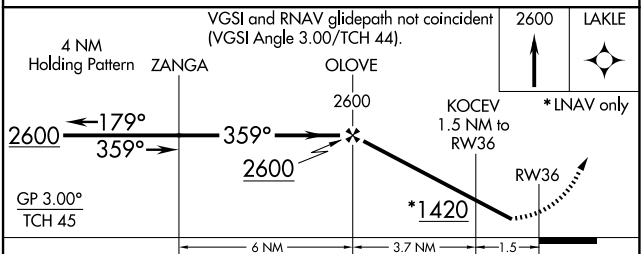
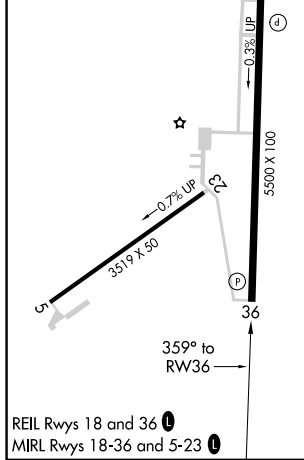
**⚠** DME/DME RNP-0.3 NA. When local altimeter setting not received, use Whiteman AFB altimeter setting: increase all DA 46 feet; increase all MDA 60 feet and LNAV visibility Cats C/D 1/8 mile, Circling Cats C/D 1/4 mile. For uncompensated Baro-VNAV systems, LNAV/VNAV NA below -16°C (3°F) or above 54°C (130°F). Baro-VNAV and VDP NA when using Whiteman AFB altimeter setting. Helicopter visibility reduction below 3/4 SM NA. Night Landing Rwy 5, 23 NA.

**MISSED APPROACH:** Climb to 2600 direct LAKLE and hold.

ASOS <b>120.525</b>	WHITEMAN APP CON * <b>127.45 284.0</b>	UNICOM <b>122.8 (CTAF) 0</b>
------------------------	---	---------------------------------



ELEV 910	TDZE 902
----------	----------



CATEGORY	A				B		C		D	
	1360-1 450 (500-1)	1460-1 550 (600-1)	1640-2 730 (800-2)	1640-2 1/4 730 (800-2 1/4)	1152-1	250 (300-1)	1155-1	253 (300-1)	1260-1	358 (400-1)
LPV DA										
LNAV/VNAV DA										
LNAV MDA										
<b>C</b> CIRCLING										

SEDALIA, MISSOURI  
Amdt 2A 29MAY14

38°42'N-93°11'W

# RNAV (GPS) RWY 36

SEDALIA RGNL (DMO)

NC-3, 22 JAN 2026 to 19 FEB 2026

NC-3, 22 JAN 2026 to 19 FEB 2026