

|  |                              |   |                                     |   |  |
|--|------------------------------|---|-------------------------------------|---|--|
| Flight Procedures Cover Page           | Task Action:<br>FLIGHT CHECK | Task Type:<br>IAP                             | Estimated Chart Date:<br>05/14/2026 | APWS Task ID:<br>30929A26D1E84AE5A6485A67A9FE10A3 | APWS Project ID:<br>0421C7517CCE4012B4A3A37CD9797519 |
| Procedure:<br>ILS OR LOC RWY 1L AMDT 2 |                              | Enroute:<br>NO                                | Specialist:<br>Stubblefield, Byron  |   | Agreement Number:                                    |
| Airport ID:<br>KCLT                    |                              |   | Airport City:<br>CHARLOTTE          |   | State:<br>NC   |
| Facility ID:<br>XUU                    | Facility Type:<br>ILS        | Flight Inspection Remark Type:<br>New FC Slot |                                     |   |  |

Procedure Comments:  
 PENDING RUNWAY AND AIRPORT DATA USED

RWY NUMBER CHANGE FROM 36L TO 1L.

KMZ: KCLT\_ILS\_OR\_LOC\_RWY\_01L\_AMDT\_2

POC: CASEY HILL, AJV-431, 405-954-0624

QUALITY  
20  
CHECKED

QUALITY  
38  
CHECKED

## FIPC BASIC FORM

|   |   |  |                                 |   |  |
|---|---|--|---------------------------------|---|--|
| <b>PROCEDURE:</b><br>ILS OR LOC RWY 1L AMDT 2 |   | <b>AIRPORT NAME:</b><br>CHARLOTTE/DOUGLAS INTL |                                 | <b>AIRPORT ID:</b><br>KCLT                              | <b>SPECIAL CONTROL NO:</b><br>AP-02-191-26 |
| <b>FAC ID:</b> XUU                            |   | <b>CITY:</b> CHARLOTTE                         |                                 | <b>ST:</b> NC   | <b>ORIG CHART DATE:</b> 05/14/2026         |
| <b>DFL TYPE:</b><br>PROC/A                    | <b>THIRD PARTY:</b><br><input type="checkbox"/> YES | <b>EST. TIME ON SITE:</b><br>0.4               | <b>REIMB. NUMBER:</b><br>AC0721 | <b>PTS TASK ID:</b><br>30929A26D1E84AE5A6485A67A9FE10A3 |  |

### PREFLIGHT NOTES

|                  |  |
|------------------|--|
| <b>REVIEWER:</b> | <b>DATE:</b>   |
| <b>COMMENTS:</b> | <b>CHECK ONE:</b><br><input type="checkbox"/> FLT CK REQ <input type="checkbox"/> NFCR <input type="checkbox"/> REJECT |
|                  | <b>YES</b> <b>NO</b>   |
|                  | <b>CPV COMPLETE?</b> <input checked="" type="checkbox"/> X <input type="checkbox"/>                                    |

### PROCEDURE RESULTS

|  |                         |   |  |   |
|--|-------------------------|---|--|---|
| <b>INSPECTION DATE:</b><br>03/27/2026                                  | <b>CREW #:</b><br>VN588 | <b>N #:</b><br>N67                          | <b>INSTRUMENT PROCEDURE STATUS:</b><br><input checked="" type="checkbox"/> SAT <input type="checkbox"/> SAT W/CHANGES <input type="checkbox"/> UNSAT | <b>ARINC CODING:</b><br><input type="checkbox"/> SAT <input type="checkbox"/> SAT/GOLD <input type="checkbox"/> UNSAT |
| <b>FLIGHT INSPECTOR SIGNATURE:</b><br>james r jones @ 03/27/2026 13:22 |                         | <b>PRINTED NAME:</b><br>JONES, JAMES ROBERT |  | <b>NOTAM INITIATED?</b><br><input type="checkbox"/> YES <input checked="" type="checkbox"/> NO                        |

**FLIGHT INSPECTOR REMARKS:**  
ILS or LOC RWY 1L, AMDT 2, Charlotte Douglas International, Charlotte, NC. SAT

### IN-FLIGHT OBSTACLE REPORT

|                          |                                 |                             |                                   |                                   |
|--------------------------|---------------------------------|-----------------------------|-----------------------------------|-----------------------------------|
| <b>OBSTRUCTION ID #:</b> | <b>COORDINATES OR LOCATION:</b> | <b>GNSS ALTITUDE (MSL):</b> | <b>BAROMETRIC ALTITUDE (MSL):</b> | <b>HEIGHT ABOVE GROUND LEVEL:</b> |
|--------------------------|---------------------------------|-----------------------------|-----------------------------------|-----------------------------------|

|  |                        |                             |   |
|--|------------------------|-----------------------------|---|
| LOC/DME I-XUU<br><b>110.15</b><br>Chan <b>38</b> (Y) | APP CRS<br><b>003°</b> | Rwy Ldg<br>TDZE<br>Apt Elev | <b>9000</b><br><b>744</b><br><b>748</b> |
|--|------------------------|-----------------------------|---|

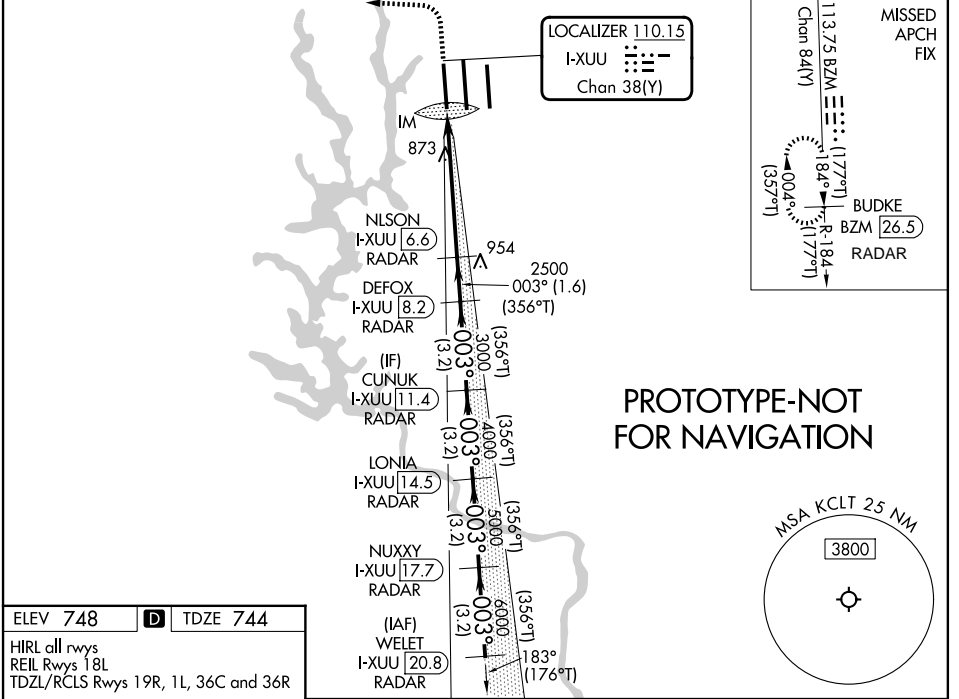
# ILS or LOC RWY 1L

CHARLOTTE/DOUGLAS INTL (CLT)

|   |            |   |
|---|------------|---|
| DME OR RADAR REQUIRED. RADAR REQUIRED FOR PROCEDURE ENTRY | ALSF-2<br> | MISSED APPROACH: Climb to 1200 then climbing left turn to 4000 on heading 280° and on BZM VOR/DME R-184 to BUDKE/BZM 26.5 DME and hold. |
|---|------------|---|

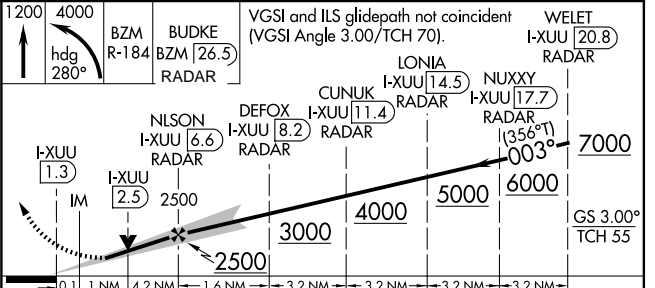
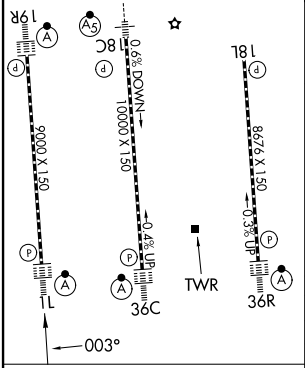
|  |  |
|--|--|
| Simultaneous approach authorized.<br>Circling NA at night. |  |
|--|--|

|                         |   |  |   |   |
|-------------------------|---|--|---|---|
| D-ATIS<br><b>121.15</b> | CHARLOTTE APP CON<br><b>128.325</b> (001°-119°)<br><b>120.05</b> (120°-295°)<br><b>134.75</b> (296°-360°) | <b>257.2</b> (180°-359°)<br><b>307.8</b> (360°-179°) | CHARLOTTE TOWER<br><b>118.1 257.8</b> (Rwys 18L-36R)<br><b>126.4 257.8</b> (Rwy 18C-36C)<br><b>133.35 257.8</b> (Rwy 18R-36L) | GND CON<br><b>121.8 348.6</b> (W)<br><b>121.9 348.6</b> (E) |
|-------------------------|---|--|---|---|



**PROTOTYPE-NOT FOR NAVIGATION**

|   |          |          |
|---|----------|----------|
| ELEV 748  | <b>D</b> | TDZE 744 |
| HIRL all rwys<br>REIL Rwys 18L<br>TDZL/RCLS Rwys 19R, 1L, 36C and 36R |          |          |



|          |                       |                          |                          |   |
|----------|-----------------------|--------------------------|--------------------------|---|
| CATEGORY | A                     | B                        | C                        | D |
| S-ILS 1L | 944/18 200 (200-1/2)  |                          |                          |   |
| S-LOC 1L | 1180/24 436 (500-1/2) | 1180/40 436 (500-3/4)    |                          |   |
| CIRCLING | 1380-1 632 (700-1)    | 1500-2 1/4 752 (800-2/4) | 1500-2 1/2 752 (800-2/2) |   |

|  |                        |   |
|--|------------------------|---|
| LOC/DME I-XUU<br><b>110.15</b><br>Chan <b>38</b> (Y) | APP CRS<br><b>003°</b> | Rwy Ldg<br>TDZE <b>744</b><br>Apt Elev <b>748</b> |
|--|------------------------|---|

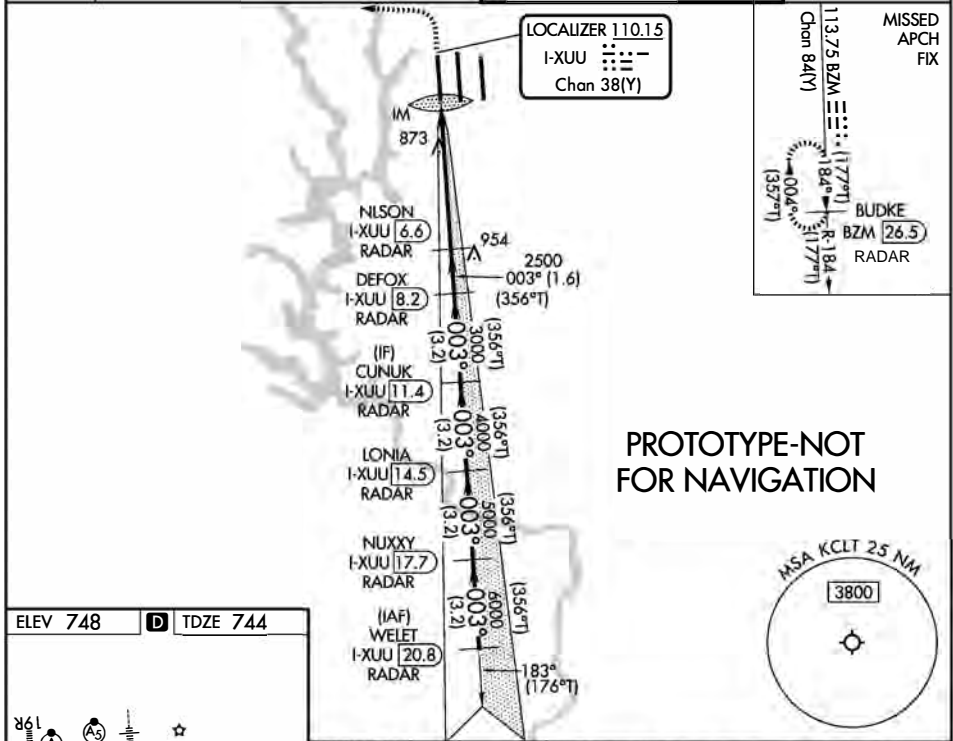
**ILS RWY 1L (SA CAT I)**  
CHARLOTTE/DOUGLAS INTL (CLT)

DME OR RADAR REQUIRED. RADAR REQUIRED FOR PROCEDURE ENTRY.

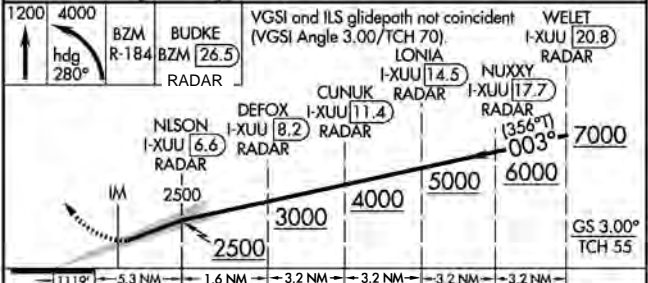
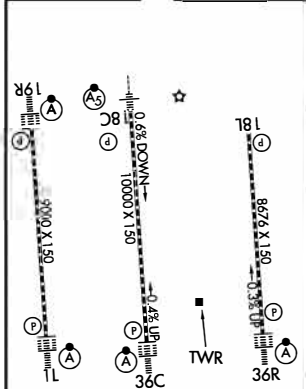
|            |   |
|------------|---|
| ALSF-2<br> | MISSED APPROACH: Climb to 1200 then climbing left turn to 4000 on heading 280° and on BZM VOR/DME R-184 to BUDKE/BZM 26.5 DME and hold. |
|------------|---|

|                         |   |  |
|-------------------------|---|--|
| D-ATIS<br><b>121.15</b> | CHARLOTTE APP CON<br><b>128.325</b> (001°-119°)<br><b>120.05</b> (120°-295°)<br><b>134.75</b> (296°-360°) | <b>257.2</b> (180°-359°)<br><b>307.8</b> (360°-179°) |
|-------------------------|---|--|

|  |   |
|--|---|
| CHARLOTTE TOWER<br><b>118.1</b> <b>257.8</b> (Rwys 18L-36R)<br><b>126.4</b> <b>257.8</b> (Rwy 18C-36C)<br><b>133.35</b> <b>257.8</b> (Rwy 18R-36L) | GND CON<br><b>121.8</b> <b>348.6</b> (W)<br><b>121.9</b> <b>348.6</b> (E) |
|--|---|



|          |          |          |
|----------|----------|----------|
| ELEV 748 | <b>D</b> | TDZE 744 |
|----------|----------|----------|



|          |           |     |        |   |
|----------|-----------|-----|--------|---|
| CATEGORY | A         | B   | C      | D |
| S-ILS 1L | RA 164/14 | 150 | DA 894 |   |

**SA CATEGORY I ILS SPECIAL AIRCREW & AIRCRAFT CERTIFICATION REQUIRED**

HIRL all rwys  
REIL Rwys 18L  
TDZL/RCLS Rwys 19R, 1L, 36C and 36R

|  |                        |   |
|--|------------------------|---|
| LOC/DME I-XUU<br><b>110.15</b><br>Chan 38(Y) | APP CRS<br><b>003°</b> | Rwy Ldg<br>TDZE <b>744</b><br>Apt Elev <b>748</b> |
|--|------------------------|---|

# ILS RWY 1L (CAT II & III)

CHARLOTTE/DOUGLAS INTL (CLT)

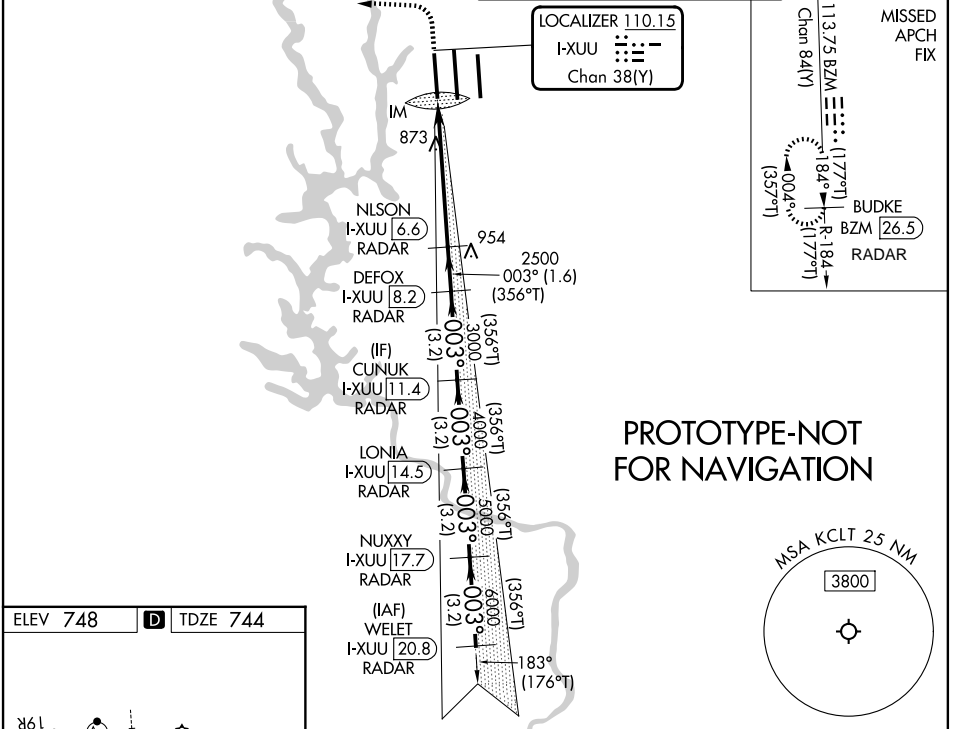
DME OR RADAR REQUIRED. RADAR REQUIRED FOR PROCEDURE ENTRY.



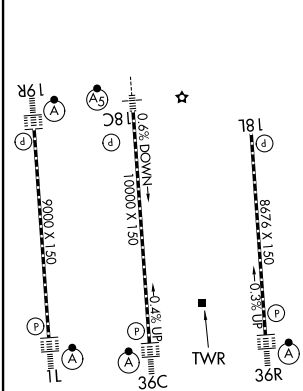
MISSED APPROACH: Climb to 1200 then climbing left turn to 4000 on heading 280° and on BZM VOR/DME R-184 to BUDKE/BZM 26.5 DME and hold.

Simultaneous approach authorized.

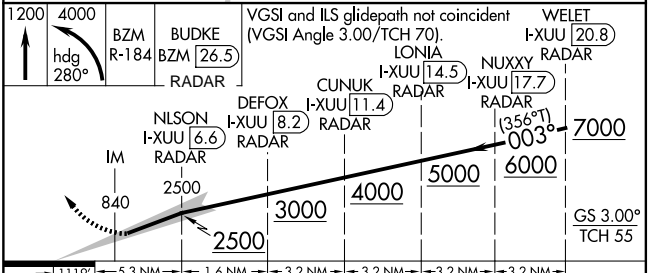
|                         |                            |                          |  |  |                               |
|-------------------------|----------------------------|--------------------------|--|--|-------------------------------|
| D-ATIS<br><b>121.15</b> | CHARLOTTE APP CON          |                          | CHARLOTTE TOWER                          |  | GND CON                       |
|                         | <b>128.325</b> (001°-119°) | <b>257.2</b> (180°-359°) | <b>118.1</b> <b>257.8</b> (Rwys 18L-36R) |  | <b>121.8</b> <b>348.6</b> (W) |
|                         | <b>120.05</b> (120°-295°)  | <b>307.8</b> (360°-179°) | <b>126.4</b> <b>257.8</b> (Rwy 18C-36C)  |  | <b>121.9</b> <b>348.6</b> (E) |
|                         | <b>134.75</b> (296°-360°)  |                          | <b>133.35</b> <b>257.8</b> (Rwy 18R-36L) |  |                               |



|          |          |          |
|----------|----------|----------|
| ELEV 748 | <b>D</b> | TDZE 744 |
|----------|----------|----------|



HIRL all rwys  
REIL Rwys 18L  
TDZL/RCLS Rwys 19R, 1L, 36C and 36R



|           |                  |   |        |        |
|-----------|------------------|---|--------|--------|
| CATEGORY  | A                | B | C      | D      |
| S-ILS 36L | CAT II RA 106/12 |   | 100    | DA 844 |
| S-ILS 36L | CAT III          |   | RVR 06 |        |

## CATEGORY II & III ILS SPECIAL AIRCREW & AIRCRAFT CERTIFICATION REQUIRED

|  |                        |                             |   |
|--|------------------------|-----------------------------|---|
| LOC/DME I-XUU<br><b>110.15</b><br>Chan 38(Y) | APP CRS<br><b>003°</b> | Rwy Ldg<br>TDZE<br>Apt Elev | <b>9000</b><br><b>744</b><br><b>748</b> |
|--|------------------------|-----------------------------|---|

**OLD**

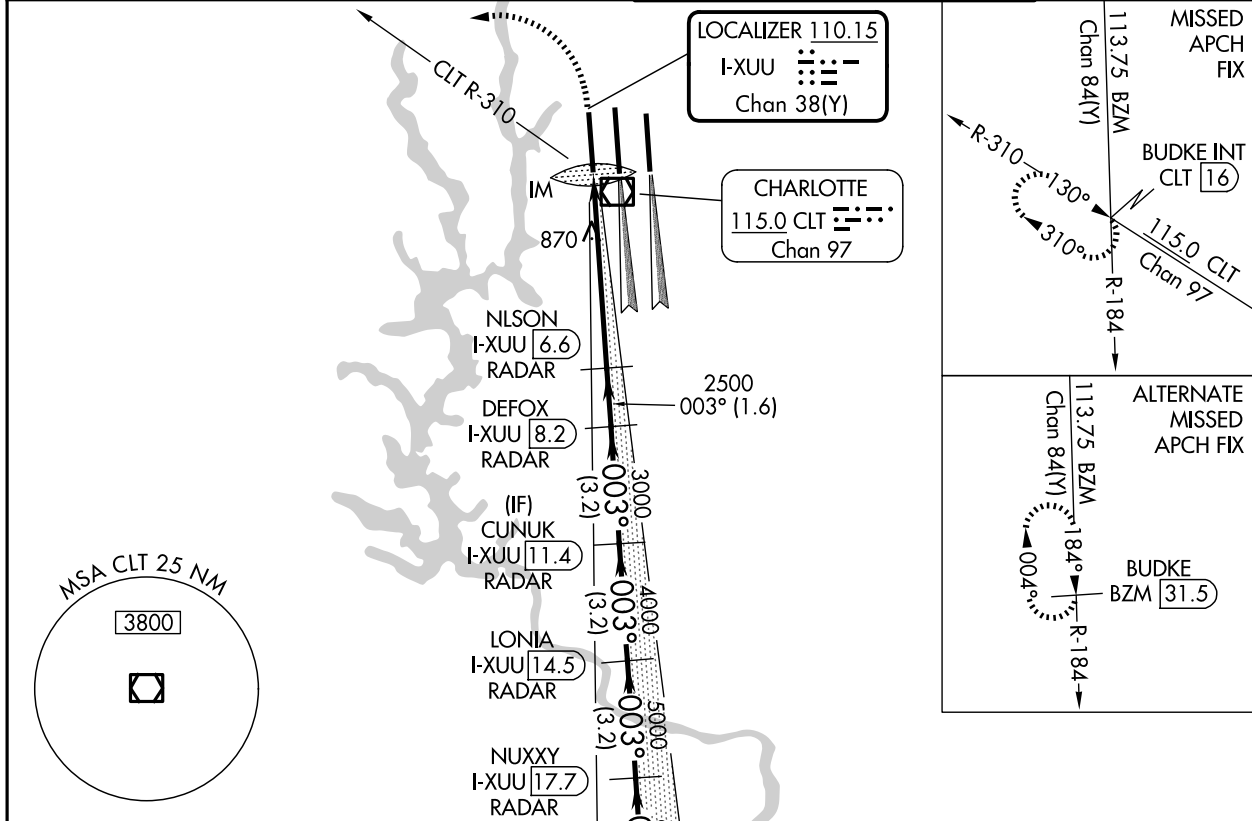
**ILS or LOC RWY 36L**  
CHARLOTTE/DOUGLAS INTL (CLT)

**▼** Circling NA at night. Simultaneous approach authorized.  
**▲** DME or RADAR required.

ALSF-2

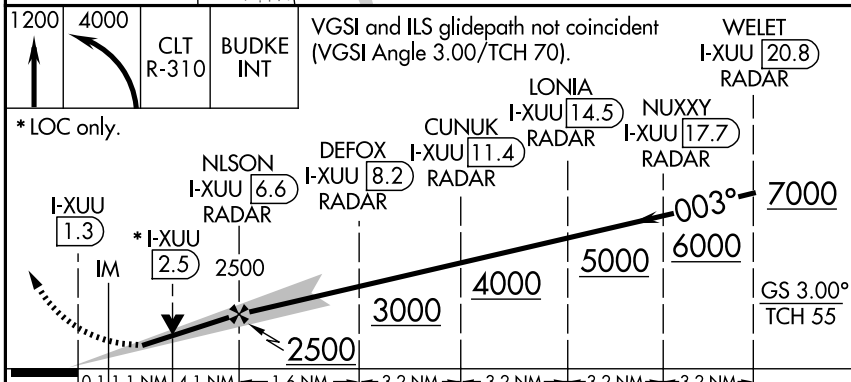
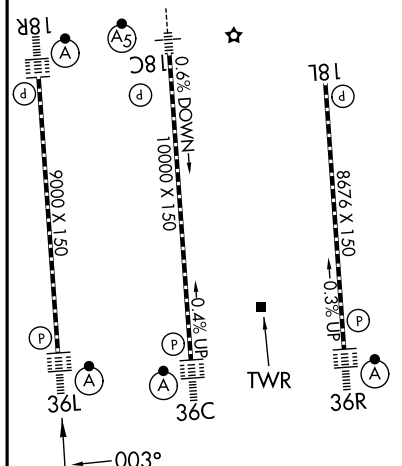
MISSED APPROACH: Climb to 1200 then climbing left turn to 4000 on CLT VOR/DME R-310 to BUDKE/CLT 16 DME and hold.

|                         |   |  |  |   |
|-------------------------|---|--|--|---|
| D-ATIS<br><b>121.15</b> | CHARLOTTE APP CON<br><b>128.325</b> (001°-119°)<br><b>120.05</b> (120°-295°)<br><b>134.75</b> (296°-360°) | <b>257.2</b> (180°-359°)<br><b>307.8</b> (360°-179°) | CHARLOTTE TOWER<br><b>118.1</b> <b>257.8</b> (Rwys 18L-36R)<br><b>126.4</b> <b>257.8</b> (Rwy 18C-36C)<br><b>133.35</b> <b>257.8</b> (Rwy 18R-36L) | GND CON<br><b>121.8</b> <b>348.6</b> (W)<br><b>121.9</b> <b>348.6</b> (E) |
|-------------------------|---|--|--|---|



ELEV 748 **D** TDZE 744

HIRL all Rwys  
REIL Rwys 18L and 23  
TDZ/CL Rwys 18R, 36L, 36C and 36R



FAF to MAP 5.3 NM

|         |      |      |      |      |      |
|---------|------|------|------|------|------|
| Knots   | 60   | 90   | 120  | 150  | 180  |
| Min:Sec | 5:18 | 3:32 | 2:39 | 2:07 | 1:46 |

|           |                     |                      |                      |   |
|-----------|---------------------|----------------------|----------------------|---|
| CATEGORY  | A                   | B                    | C                    | D |
| S-ILS 36L | 944/18 200 (200-½)  |                      |                      |   |
| S-LOC 36L | 1180/24 436 (500-½) | 1180/40 436 (500-¾)  |                      |   |
| CIRCLING  | 1380-1 632 (700-1)  | 1500-2¼ 752 (800-2¼) | 1500-2½ 752 (800-2½) |   |

SE-2, 02 OCT 2025 to 30 OCT 2025

SE-2, 02 OCT 2025 to 30 OCT 2025

|  |                        |   |
|--|------------------------|---|
| LOC/DME I-XUU<br><b>110.15</b><br>Chan 38(Y) | APP CRS<br><b>003°</b> | Rwy Ldg<br>TDZE <b>744</b><br>Apt Elev <b>748</b> |
|--|------------------------|---|

**OLD**

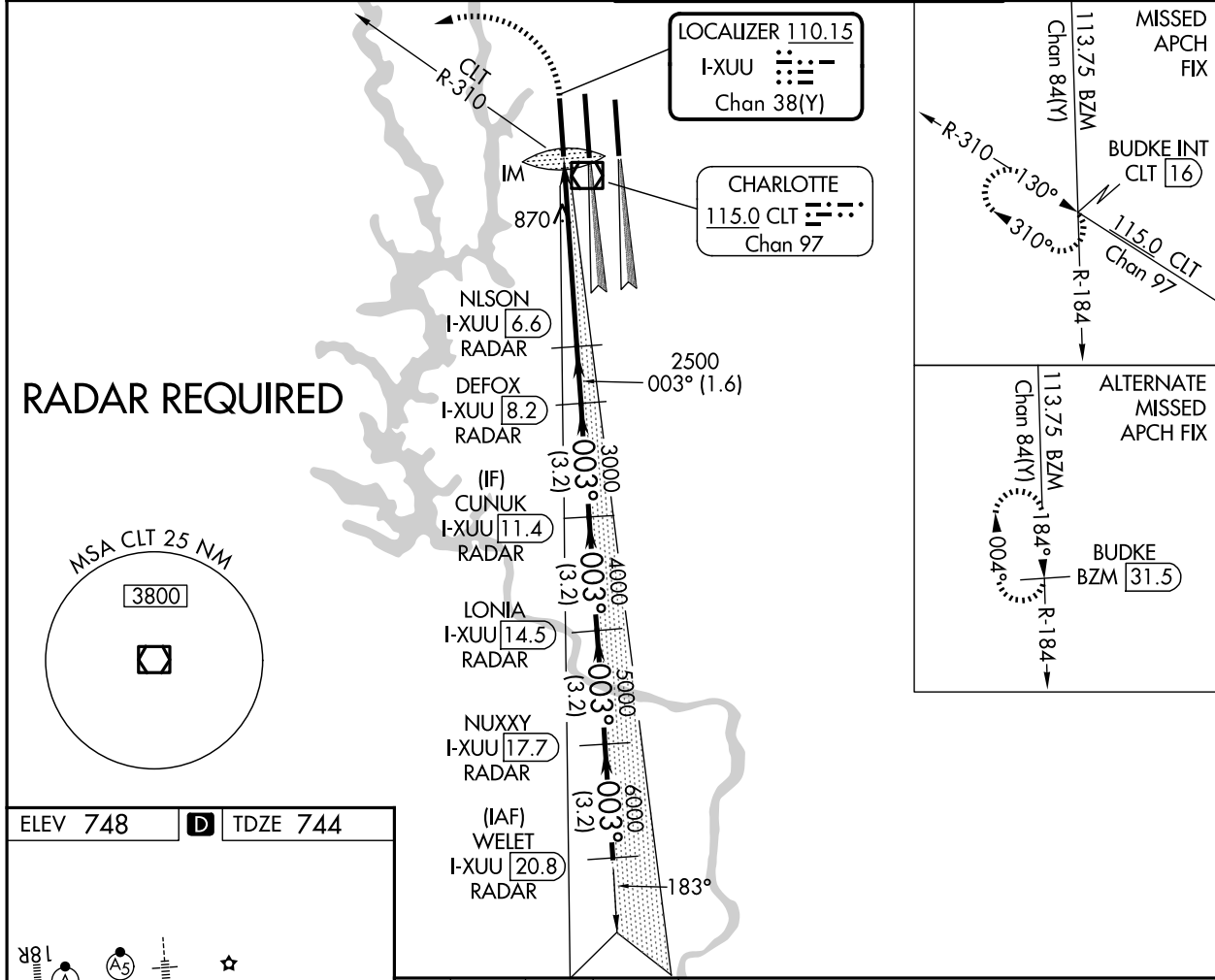
# ILS RWY 36L (SA CAT I) CHARLOTTE/DOUGLAS INTL (CLT)

⚠ Simultaneous approach authorized.  
 ⚠ DME or RADAR required. Requires specific OPSPEC, MSPEC, or LOA approval and use of HUD to DH.

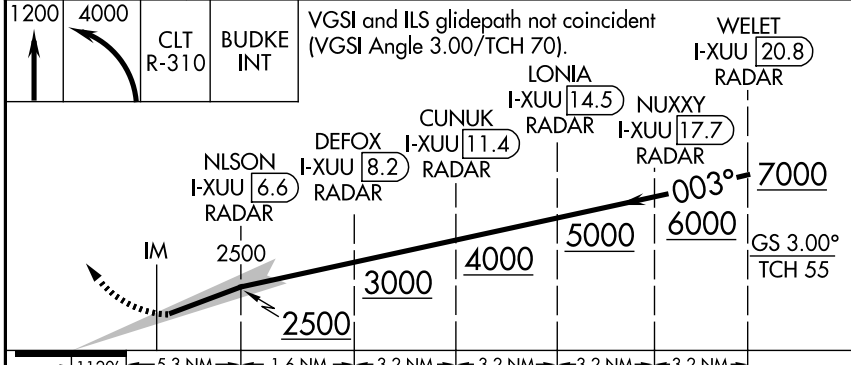
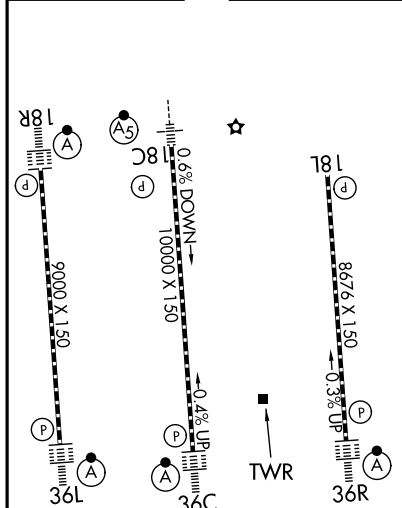
ALSf-2

MISSED APPROACH: Climb to 1200 then climbing left turn to 4000 and on CLT VOR/DME R-310 to BUDKE INT/CLT 16 DME and hold.

|                         |   |  |  |   |
|-------------------------|---|--|--|---|
| D-ATIS<br><b>121.15</b> | CHARLOTTE APP CON<br><b>128.325</b> (001°-119°)<br><b>120.05</b> (120°-295°)<br><b>134.75</b> (296°-360°) | <b>257.2</b> (180°-359°)<br><b>307.8</b> (360°-179°) | CHARLOTTE TOWER<br><b>118.1</b> <b>257.8</b> (Rwys 18L-36R)<br><b>126.4</b> <b>257.8</b> (Rwy 18C-36C)<br><b>133.35</b> <b>257.8</b> (Rwy 18R-36L) | GND CON<br><b>121.8</b> <b>348.6</b> (W)<br><b>121.9</b> <b>348.6</b> (E) |
|-------------------------|---|--|--|---|



ELEV 748 TDZE 744



|           |           |     |        |   |
|-----------|-----------|-----|--------|---|
| CATEGORY  | A         | B   | C      | D |
| S-ILS 36L | RA 164/14 | 150 | DA 894 |   |

## SA CATEGORY I ILS SPECIAL AIRCREW & AIRCRAFT CERTIFICATION REQUIRED

SE-2, 02 OCT 2025 to 30 OCT 2025

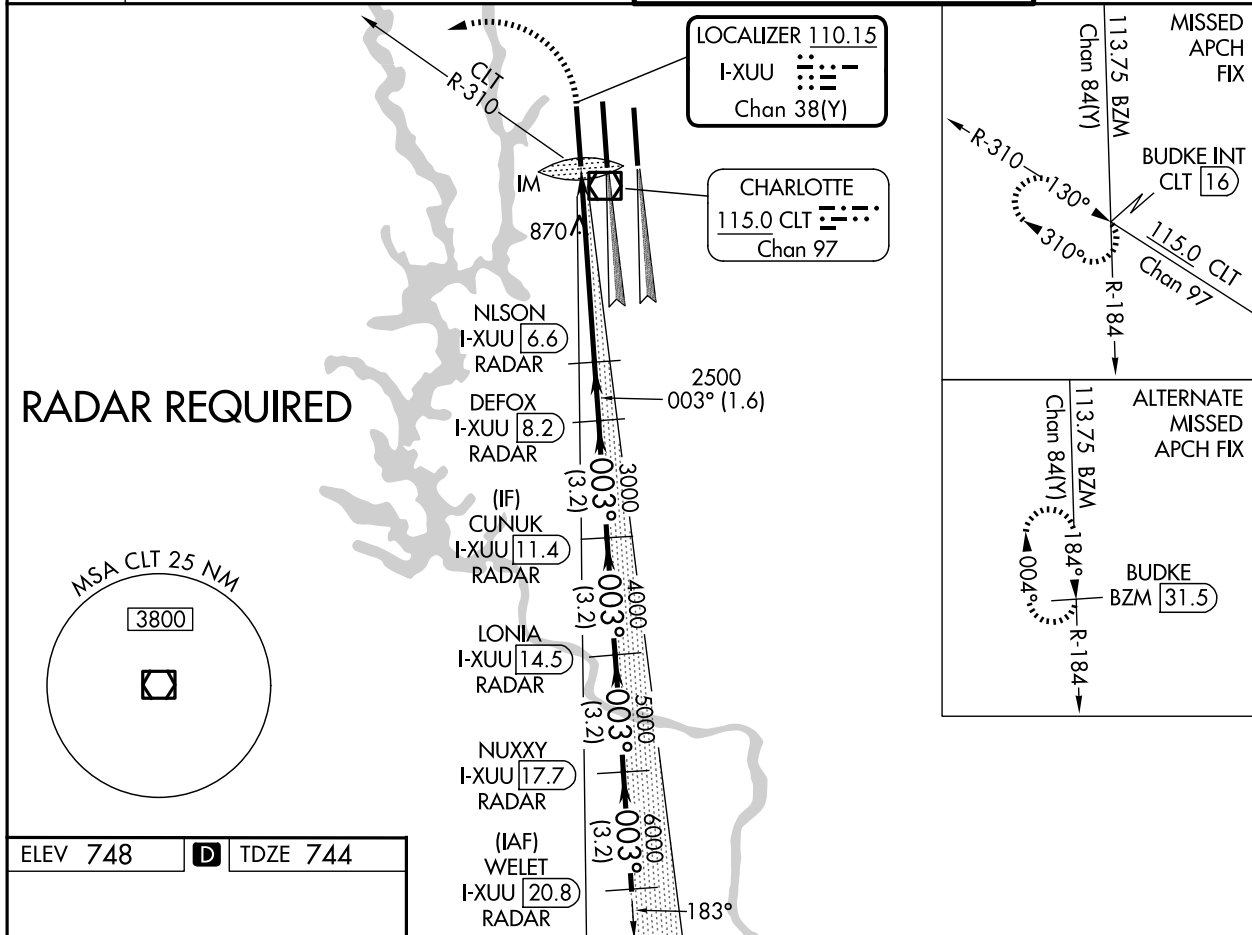
SE-2, 02 OCT 2025 to 30 OCT 2025

|  |                        |   |
|--|------------------------|---|
| LOC/DME I-XUU<br><b>110.15</b><br>Chan <b>38</b> (Y) | APP CRS<br><b>003°</b> | Rwy Ldg<br>TDZE <b>744</b><br>Apt Elev <b>748</b> |
|--|------------------------|---|

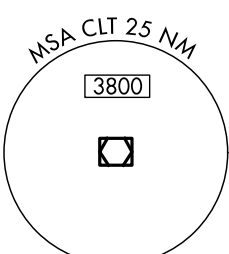
**OLD**

# ILS RWY 36L (CAT II & III) CHARLOTTE/DOUGLAS INTL (CLT)

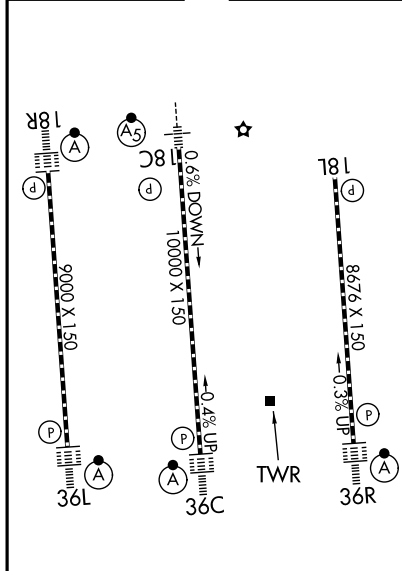
|                         |  |  |   |  |         |
|-------------------------|--|--|---|--|---------|
| D-ATIS<br><b>121.15</b> | CHARLOTTE APP CON  |  | CHARLOTTE TOWER   |  | GND CON |
|                         | <b>128.325</b> (001°-119°)<br><b>120.05</b> (120°-295°)<br><b>134.75</b> (296°-360°) | <b>257.2</b> (180°-359°)<br><b>307.8</b> (360°-179°) | <b>118.1</b> <b>257.8</b> (Rwys 18L-36R)<br><b>126.4</b> <b>257.8</b> (Rwy 18C-36C)<br><b>133.35</b> <b>257.8</b> (Rwy 18R-36L) | <b>121.8</b> <b>348.6</b> (W)<br><b>121.9</b> <b>348.6</b> (E) |         |



**RADAR REQUIRED**



ELEV 748 **D** TDZE 744



HIRL all Rws  
REIL Rws 18L and 23  
TDZ/CL Rws 18R, 36L, 36C and 36R

|           |                             |           |           |   |                          |  |  |                          |
|-----------|-----------------------------|-----------|-----------|---|--------------------------|--|--|--------------------------|
| 1200      | 4000                        | CLT R-310 | BUDKE INT | VGSI and ILS glidepath not coincident (VGSI Angle 3.00/TCH 70). |                          |  |  | WELET I-XUU [20.8] RADAR |
|           |                             |           |           | LONIA I-XUU [14.5] RADAR  | NUXXY I-XUU [17.7] RADAR |  |  | 7000                     |
|           |                             |           |           | DEFOX I-XUU [8.2] RADAR   | CUNUK I-XUU [11.4] RADAR |  |  | 6000                     |
|           |                             |           |           | NLSON I-XUU [6.6] RADAR   | IM                       |  |  | 5000                     |
|           |                             |           |           |   |                          |  |  | 4000                     |
|           |                             |           |           |   |                          |  |  | 3000                     |
|           |                             |           |           |   |                          |  |  | 2500                     |
|           |                             |           |           |   |                          |  |  | 2500                     |
|           |                             |           |           |   |                          |  |  | 841                      |
|           |                             |           |           |   |                          |  |  | 81                       |
|           |                             |           |           |   |                          |  |  | 5.3 NM                   |
|           |                             |           |           |   |                          |  |  | 1.6 NM                   |
|           |                             |           |           |   |                          |  |  | 3.2 NM                   |
|           |                             |           |           |   |                          |  |  | 3.2 NM                   |
|           |                             |           |           |   |                          |  |  | 3.2 NM                   |
|           |                             |           |           |   |                          |  |  | 3.2 NM                   |
|           |                             |           |           |   |                          |  |  | 1120°                    |
| CATEGORY  |                             |           |           |   |                          |  |  |                          |
| S-ILS 36L | CAT II RA 106/12 100 DA 844 |           |           |   |                          |  |  |                          |
| S-ILS 36L | CAT IIIa RVR 07             |           |           |   |                          |  |  |                          |
| S-ILS 36L | CAT IIIb RVR 06             |           |           |   |                          |  |  |                          |
| S-ILS 36L | CAT IIIc NA                 |           |           |   |                          |  |  |                          |

## CATEGORY II & III ILS SPECIAL AIRCREW & AIRCRAFT CERTIFICATION REQUIRED

SE-2, 02 OCT 2025 to 30 OCT 2025

SE-2, 02 OCT 2025 to 30 OCT 2025