

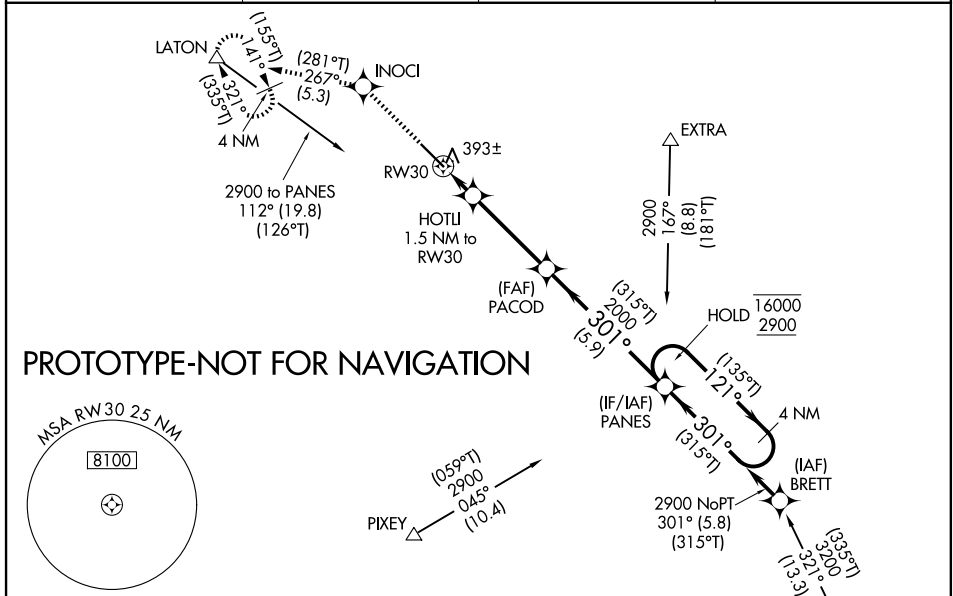
WAAS CH <b>77623</b> <b>W30A</b>	APP CRS <b>301°</b>	Rwy Ldg TDZE Apt Elev	<b>5635</b> <b>293</b> <b>293</b>
--	------------------------	-----------------------------	---

# RNAV (GPS) RWY 30

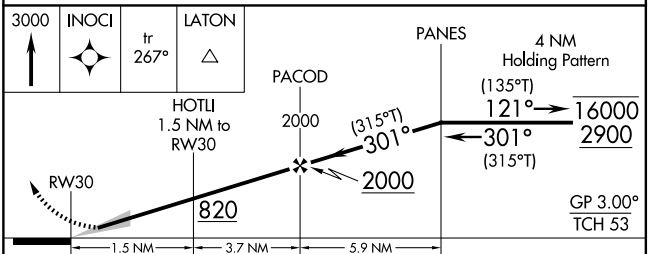
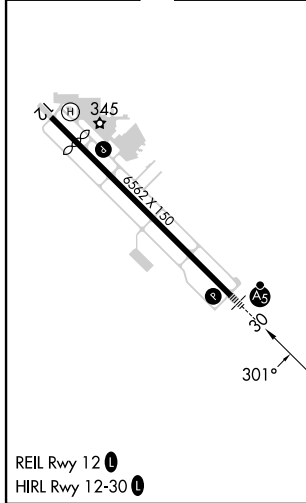
VISALIA MUNI (VIS)

RNP APCH - GPS.	MALSR	MISSED APPROACH: Climb to 3000 direct INOCI and on track 267° to LATON and hold, continue climb-in-hold to 3000.
<p>⚠ For uncompensated Baro-VNAV systems, LNAV/VNAV NA below -15°C or above 54°C. For inop ALS, increase LNAV/VNAV all Cats visibility to 1 SM, LNAV Cats C/D to 1 SM.</p>		

AWOS-3PT <b>119.925</b>	FRESNO APP CON <b>118.5</b>	CLNC DEL <b>118.5</b>	UNICOM <b>123.05 (CTAF)</b>
----------------------------	--------------------------------	--------------------------	--------------------------------



ELEV 293	<b>D</b>	TDZE 293
----------	----------	----------



CATEGORY	A	B	C	D
LPV DA		500-½	207 (300-½)	
LNAV/VNAV DA		656-⅝	363 (400-⅝)	
LNAV MDA	660-½	367 (400-½)	660-⅝	367 (400-⅝)
CIRCLING	740-1	760-1	760-1½	940-2
	447 (500-1)	467 (500-1)	467 (500-1½)	647 (700-2)