

NDB RWY 2

KENT STATE UNIVERSITY (1G3)

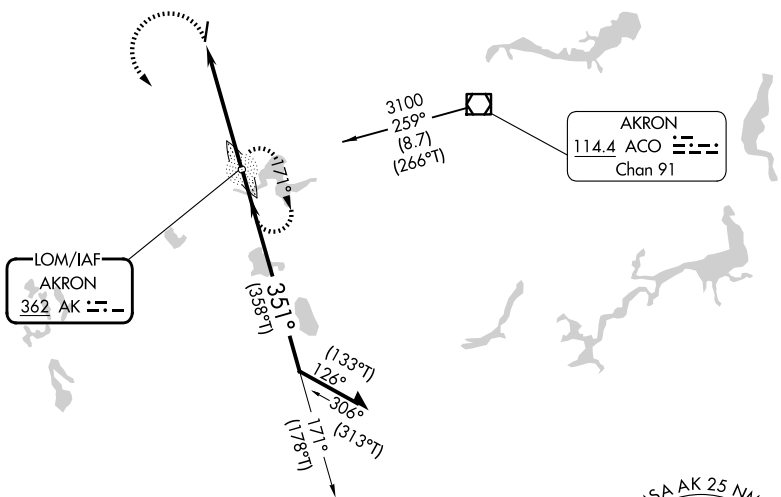
LOM AK 362	APP CRS 351°	Rwy Ldg 3947
		TDZE 1129
		Apt Elev 1135

▼ Rwy 1 helicopter visibility reduction below 1 SM NA. Straight-in and Circling minimums NA at night. When local altimeter setting not received, use Akron Fulton Intl altimeter setting and increase all MDAs 40 ft, increase S-1 Cat C and Circling Cat C visibility 1/8 SM.

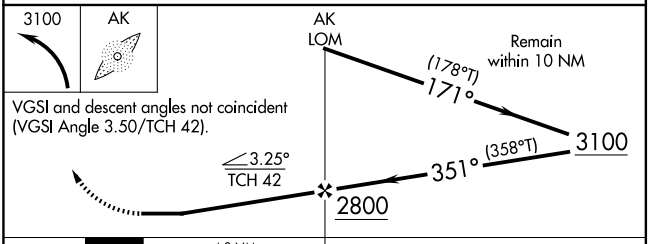
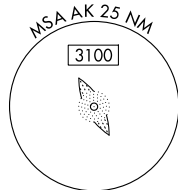
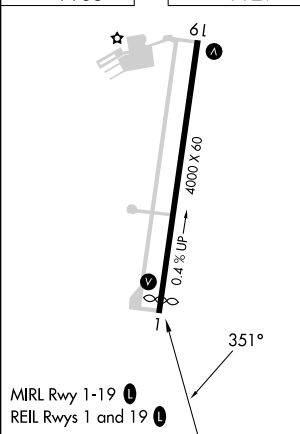
▲ MISSED APPROACH: Climbing left turn to 3100 direct AKRON LOM and hold.

AWOS-2 119.15	AKR ASOS 126.825	CLEVELAND APP CON * 125.5 371.875	CLNC DEL 125.65	UNICOM 122.725 (CTAF)	122.90
-------------------------	----------------------------	---	---------------------------	---------------------------------	---------------

PROTOTYPE-NOT FOR NAVIGATION



ELEV 1135 TDZE 1129



CATEGORY	A	B	C	D
S-2	1760-1	631 (700-1)	1760-1 1/8 631 (700-1 1/8)	NA
CIRCLING	1760-1	625 (700-1)	1760-1 1/8 625 (700-1 1/8)	NA

FAF to MAP 4.8 NM

Knots	60	90	120	150	180
Min:Sec	4:48	3:12	2:24	1:55	1:36