

Flight Procedures Cover Page	Task Action: P-NOTAM	Task Type: IAP	Estimated Chart Date: 10/07/2021	APWS Task ID: 319C53BDBBB044DF8553D5AE7DBB65EB	APWS Project ID: B425330D2C65416CBF6C85BD20C40E00
Procedure: ILS OR LOC RWY 31 AMDT 10C		Enroute: NO	Specialist: Lafferty, James		Agreement Number:
Airport ID: KMOT			Airport City: MINOT		State: ND
Facility ID:	Facility Type:	Flight Inspection Remark Type:			

Procedure Comments:

P-NOTAM

This Cancels FDC 0/1447 & 0/1543

Order 8260.3, chapter 2, New Circling Criteria Applied

Contact Dave Teffeteller at 202-267-5177


QUALITY
45
CHECKED

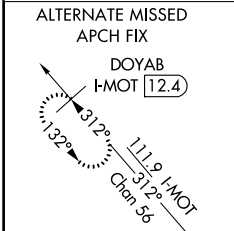
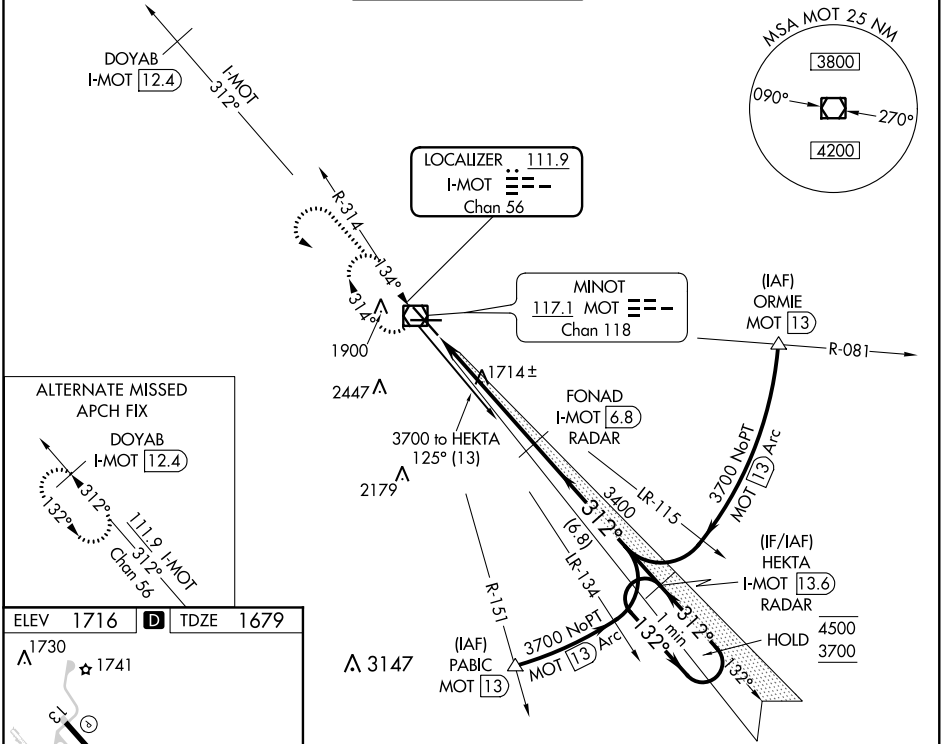
QUALITY
26
CHECKED

LOC/DME I-MOT 111.9 Chan 56	APP CRS 312°	Rwy Idg TDZE Apt Elev	7700 1679 1716
---	------------------------	-----------------------------	---

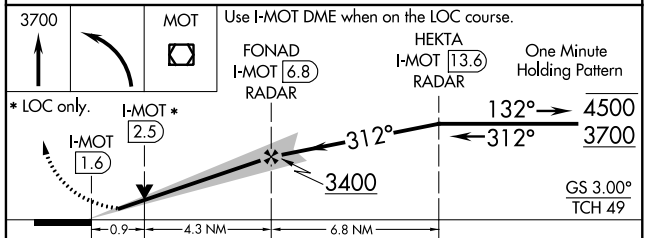
OLD

ILS or LOC RWY 31
MINOT INTL (MOT)

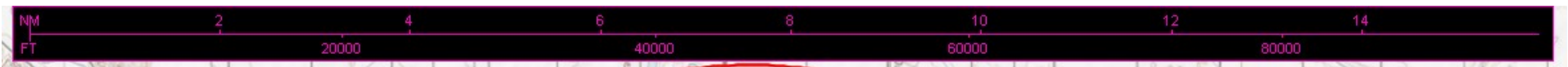
DME or RADAR required.		MALSR 		MISSED APPROACH: Climb to 3700 then left turn direct MOT VOR/DME and hold.	
<p>▼ For Inop ALS, increase S-ILS 31 Cat E visibility to RVR 4000, and S-LOC 31 Cat C, D and E visibility to RVR 4500.</p> <p>▲ Auto Pilot coupled approach NA below 2060.</p>		ASOS 118.725		MINOT APP CON * 119.6 363.8	
MAGIC CITY TOWER * 118.2 (CTAF) 0 251.125		GND CON 121.9		UNICOM 122.95	



ELEV 1716	D	TDZE 1679			
1730	1741	1770 X 130			
6348 X 100	0.9% UP	26			
TWR 1784	0.53% UP	13			
312° 5.2 NM from FAF					
REIL Rwy 13					
REIL Rwys 8 and 26					
HIRL Rwys 8-26 and 13-31					
FAF to MAP 5.2 NM					
Knots	60	90	120	150	180
Min:Sec	5:12	3:28	2:36	2:05	1:44

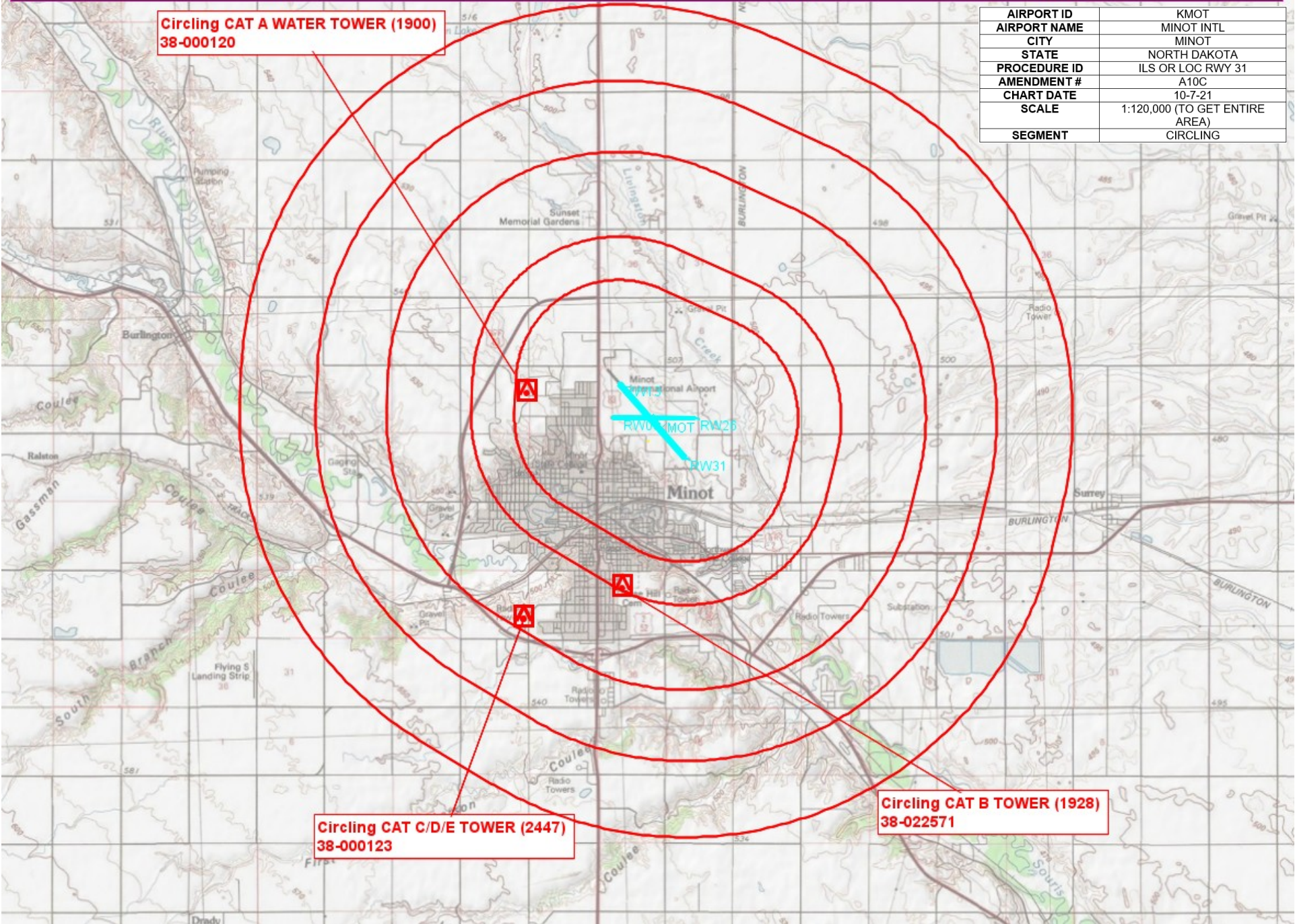


CATEGORY	A	B	C	D	E
S-ILS 31	1879/24 200 (200-½)				
S-LOC 31	1980/24 301 (300-½)		1980/40 301 (300-¾)		
CIRCLING	2200-1	484 (500-1)	2240-1½ 524 (600-1½)	2280-2 564 (600-2)	2800-3 1084 (1100-3)



**Circling CAT A WATER TOWER (1900)
38-000120**

AIRPORT ID	KMOT
AIRPORT NAME	MINOT INTL
CITY	MINOT
STATE	NORTH DAKOTA
PROCEDURE ID	ILS OR LOC RWY 31
AMENDMENT #	A10C
CHART DATE	10-7-21
SCALE	1:120,000 (TO GET ENTIRE AREA)
SEGMENT	CIRCLING



**Circling CAT C/D/E TOWER (2447)
38-000123**

**Circling CAT B TOWER (1928)
38-022571**