

Flight Procedures Cover Page	Task Action: FLIGHT CHECK	Task Type: IAP	Estimated Chart Date: 07/09/2026	APWS Task ID: 3228521A8E9649B2B61772D15F082B47	APWS Project ID: 7EE33B3BCBEF486496FCF325C601D7C2
Procedure: RNAV (GPS) RWY 7 AMDT 1		Enroute: NO	Specialist: Gonzales, Emmanuel		Agreement Number:
Airport ID: KMTH			Airport City: MARATHON		State: FL
Facility ID:	Facility Type:	Flight Inspection Remark Type: New FC Slot			

Procedure Comments:
PENDING DATA USED FOR AIRPORT AND RUNWAYS.

RUNWAY 7-25 SHIFTED 40' NORTH.

CONTACT: RAKE MCGRAW 405-954-8711.



WAAS CH 99605 W07A	APP CRS 071°	Rwy Ldg TDZE Apt Elev	5008 5 5
--	------------------------	-----------------------------	-------------------------------------

OLD

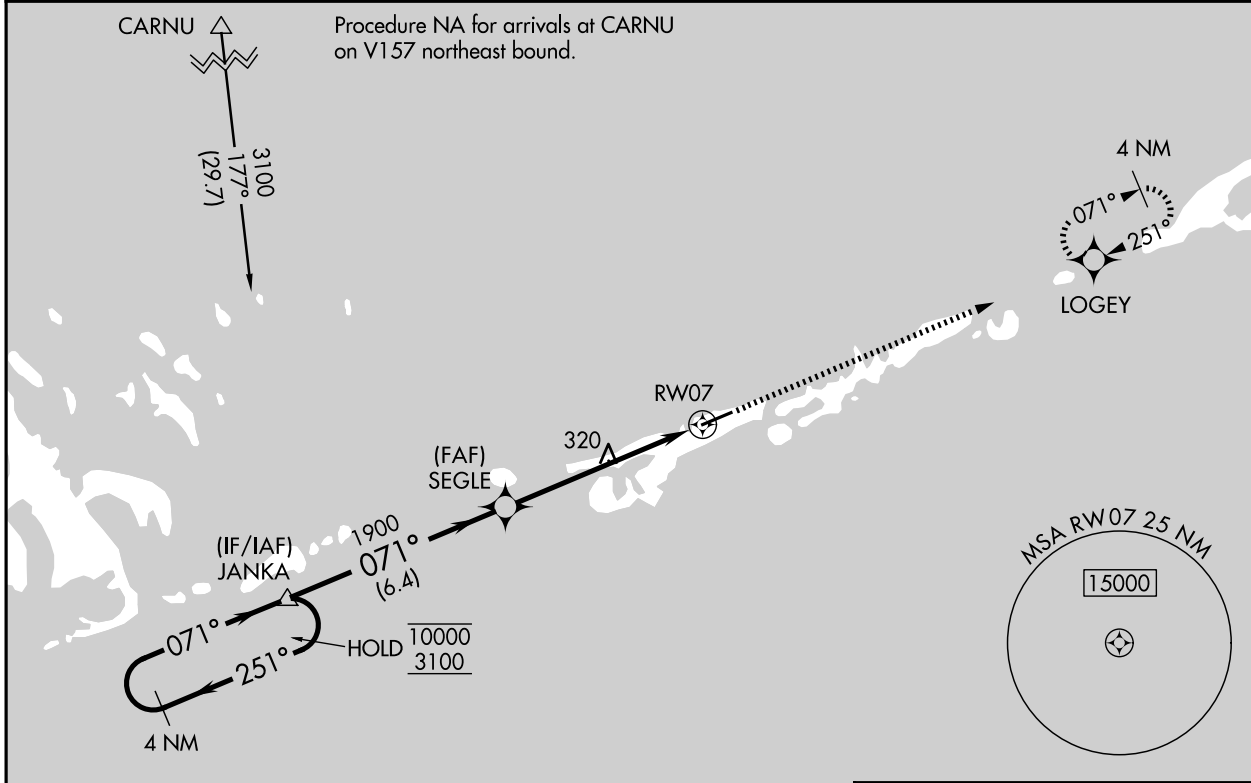
RNAV (GPS) RWY 7
THE FLORIDA KEYS MARATHON INTL (MTH)

RNP APCH-GPS.

▼ Baro-VNAV and VDP NA when using Key West Intl altimeter setting. Rwy 7 helicopter visibility reduction below 3/4 SM NA. For uncompensated Baro-VNAV systems, LNAV/VNAV NA below -15°C or above 54°C. When local altimeter setting not received, use Key West Intl altimeter setting: increase LPV DA to 482 feet, LNAV/VNAV DA to 534 feet, increase LPV and LNAV/VNAV all Cats visibility 1/4 SM, increase all MDAs 100 feet and LNAV Cat C/D and Circling Cat C visibility 1/4 SM and Circling Cat D 1/2 SM.

▲ MISSED APPROACH: Climb to 2000 direct LOGEY and hold.

ASOS 135.525	MIAMI CENTER 133.5 306.9	UNICOM 122.975 (CTAF) 0
------------------------	------------------------------------	-----------------------------------



SE-3, 25 DEC 2025 to 22 JAN 2026

SE-3, 25 DEC 2025 to 22 JAN 2026

ELEV	5	D	TDZE	5
------	---	---	------	---

4 NM Holding Pattern

VGSI and RNAV glidepath not coincident (VGSI Angle 3.00/TCH 24).

JANKA

SEGLE

LOGEY 2000

10000 3100 ← 251° 071° →

GP 3.00° TCH 40

1900 1.7 NM to RW07

6.4 NM 4 NM 1.7 NM

CATEGORY	A	B	C	D
LPV DA	389-1 1/8		384 (400-1 1/8)	
LNAV/VNAV DA	441-1 1/4		436 (500-1 1/4)	
LNAV MDA	600-1	595 (600-1)	600-1 3/4	595 (600-1 3/4)
CIRCLING	600-1	595 (600-1)	620-1 3/4 615 (700-1 3/4)	660-2 655 (700-2)

REIL Rwy 7 0
MIRL Rwy 7-25 0