

DME DME Assessment Results for JEEMY4 path KMCO:RW17L:DER_KAAPE

Results Summary	
Flyability:	Completed
DME/DME:	Completed - No Critical DMEs
Name:	Mark CTR Thompson
Project File:	C:\Users\Mark CTR Thompson\OneDrive - Federal Aviation Administration\Desktop\RNAV Projects\RNAV Projects 2025\MCO SIDs\MCO JEEMY SID\DME\KMCO JEEMY4 (RNAV) SID DME_241105.tgs
Output File:	C:\Users\Mark CTR Thompson\OneDrive - Federal Aviation Administration\Desktop\RNAV Projects\RNAV Projects 2025\MCO SIDs\MCO JEEMY SID\DME\KMCO [IFPA] JEEMY4 20241105_0812 EST\KMCO-RW17L-DER_KAAPE\KMCO JEEMY4 SID RW17L KAAPE 20241105_0812 EST.pdf
Procedure Name:	JEEMY4
Software: DmeDmePlugin:	7.4.0
Date/Time:	11/05/2024 08:12 EST
Databases:	MITRE 3DEP 3 arcsec

Failures
No Failures

Warnings
No Warnings

Informational
No Informational

Notes For Flight Check
None

Flight Plan							
Name	Type	Lat/Lon	Altitude (ft)	VNAV Mode	Ground Speed (kts)	Turn Type	Leg Type
KMCO:RW17L:DER	WP	N28° 25' 08.20", W081° 16' 56.38"	89.7	VNAV	130	FLY_BY	TF
KAAPE	WP	N28° 20' 56.58", W081° 16' 05.60"	876.5	VNAV	200	FLY_BY	TF
Climb Gradient: 200.0 ft/NM							

Flyability	
Flight Type:	SID
Selected Airport:	KMCO [IFPA]
Climb Gradient:	200.0 ft/NM
Speeds:	130 at the Runway DER
	145 at the end of the VA or VI leg
	200 Ground Speed to 11000 FT
	240 Ground Speed to 18000 FT
	260 Ground Speed to 24000 FT
	340 Ground Speed above 24000 FT
Descent During a Turn:	Allowed
VNAV Mode:	Flight Plan

DME DME Assessment Results for JEEMY4 path KMCO:RW17L:DER_KAAPE

DME/DME	
RNP:	RNP 2
Flight Mode:	Manual
Line of Sight (DTED Level 0 Max):	Evaluated
Inertial Drift:	Enabled
Initial Drift:	0.558 NM
INS Drift Rate:	8.0 NM/Hour
Range Mode:	OSV
RNP Edges:	Evaluated
Min DME Range:	3.0 NM
DME Types:	DME, VOR-DME, VORTAC, TACAN
DME Include Angles:	30 to 150
Critical DMEs:	Allowed
DoD Facilities:	Included
Foreign Facilities:	Not included
High DMEs:	Included
Low DMEs:	Included
Terminal DMEs:	Included
Flight Check DMEs:	Not selected
Higher Altitudes:	Not Evaluated
Near Maximum Altitude:	Not Evaluated
Automatic ESVs:	Not enabled
Disabled DMEs:	None

DME/DME (Continued)

DMEs Used

#	Name	Lat/Lon	MAGVAR	Range	Type	Source	Critical	Status	Time	Distance
---	------	---------	--------	-------	------	--------	----------	--------	------	----------

Flight Check DME Selection

Distance [NM]	Selected DMEs	Alternate
0.0		

Inertial Drift Segments

#	Start Location	End Location	Length [NM]
1	N28° 25' 06.04", W081° 16' 56.36"	N28° 20' 56.58", W081° 16' 05.60"	4.2674

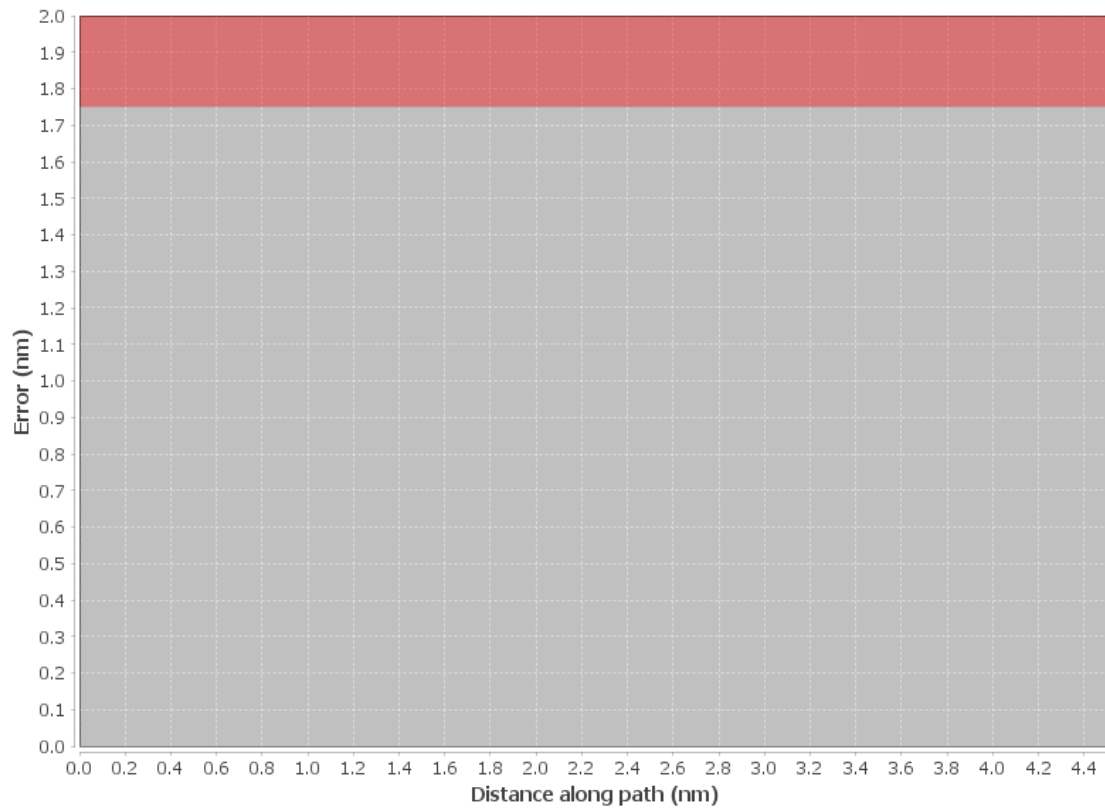
Available DMEs by Waypoints

Waypoint Before	Waypoint After	DME List	Suggested DMEs
KMCO:RW17L:DER	KAAPE		

DME DME Assessment Results for JEEMY4 path KMCO:RW17L:DER_KAAPE

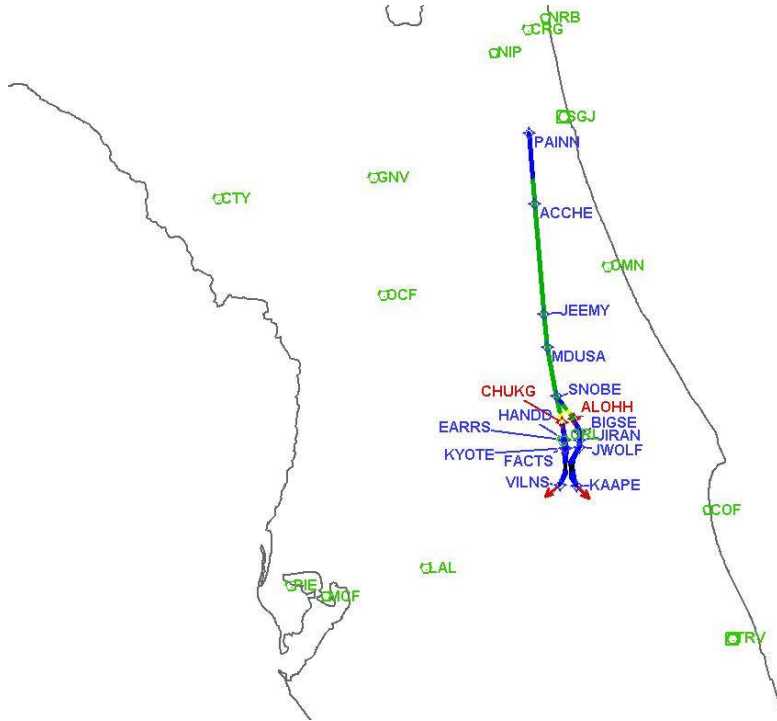
User Data Files								
#	File Name							
None								
User DMEs								
#	Name	Lat/Lon	MAGVAR	Range	Elevation [ft]	Frequency	Replaces	Status
1	OCF FAA 714002-18 OCF	N29° 10' 38.92", W082° 13' 34.80"	0.0 E	40	78.3	113.7	OCF FAA 714002-18	
ESV:		Bearing [True]: 117.0° to 180.0° Bearing [Mag]: 117.0° to 180.0°				Arc Distance: Out to 80.0 NM Altitude: 4000.0 to 20000.0 ft		
2	OCF FAA 714002-32 OCF	N29° 10' 38.92", W082° 13' 34.80"	0.0 E	40	78.3	113.7	OCF FAA 714002-32	
ESV:		Bearing [True]: 50.0° to 120.0° Bearing [Mag]: 50.0° to 120.0°				Arc Distance: Out to 80.0 NM Altitude: 5000.0 to 18000.0 ft		
3	LAL FAA 704224-41 LAL	N27° 59' 10.31", W082° 00' 50.06"	1.0 E	130	133.8	116.0	LAL FAA 704224-41	
ESV:		Bearing [True]: 360.0° to 77.0° Bearing [Mag]: 359.0° to 76.0°				Arc Distance: Out to 70.0 NM Altitude: 3000.0 to 14700.0 ft		
4	ORL FAA 694096-50 ORL	N28° 32' 33.80", W081° 20' 06.05"	0.0 E	130	101.6	112.2	ORL FAA 694096-50	
ESV:		Bearing [True]: 345.0° to 5.0° Bearing [Mag]: 345.0° to 5.0°				Arc Distance: Out to 80.0 NM Altitude: 4000.0 to 14500.0 ft		
5	OMN FAA 694106-20 OMN	N29° 18' 11.70", W081° 06' 45.71"	0.0 E	130	24	112.6	OMN FAA 694106-20	
ESV:		Bearing [True]: 190.0° to 255.0° Bearing [Mag]: 190.0° to 255.0°				Arc Distance: Out to 72.0 NM Altitude: 3000.0 to 14600.0 ft		

DME Error



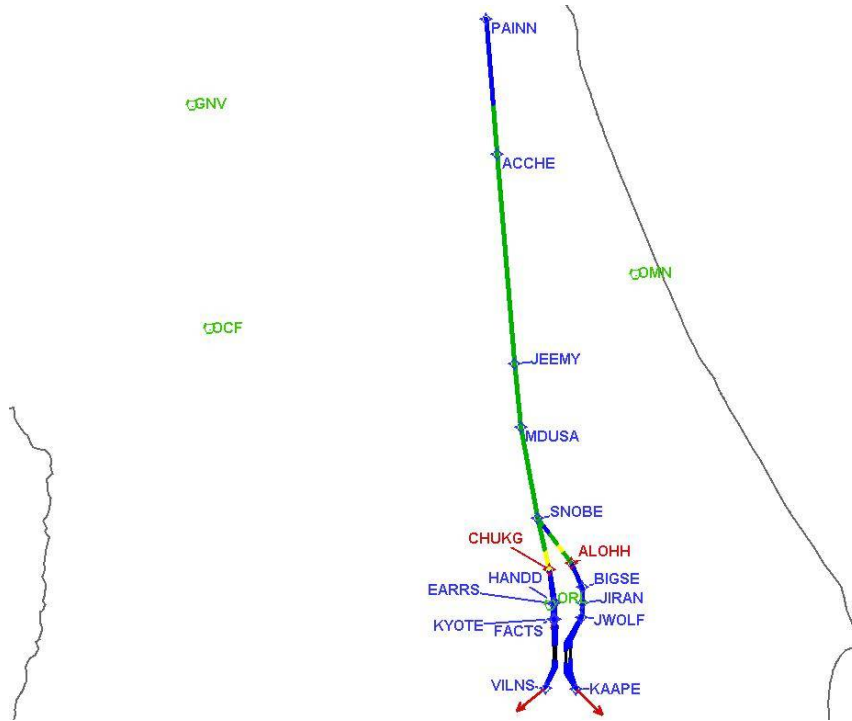
DME DME Assessment Results for JEEMY4 path KMCO:RW17L:DER_KAAPE

Graphic Depiction 1



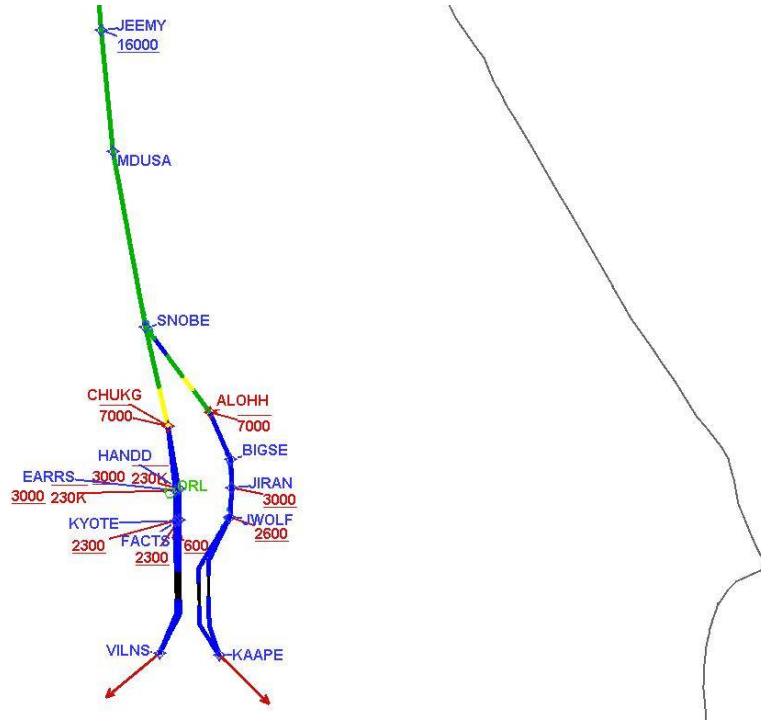
DME DME Assessment Results for JEEMY4 path KMCO:RW17L:DER_KAAPE

Graphic Depiction 2



DME DME Assessment Results for JEEMY4 path KMCO:RW17L:DER_KAAPE

Graphic Depiction 3



DME DME Assessment Results for JEEMY4 path KMCO:RW17R:DER_KAAPE

Results Summary	
Flyability:	Completed
DME/DME:	Completed - No Critical DMEs
Name:	Mark CTR Thompson
Project File:	C:\Users\Mark CTR Thompson\OneDrive - Federal Aviation Administration\Desktop\RNAV Projects\RNAV Projects 2025\MCO SIDs\MCO JEEMY SID\DME\KMCO JEEMY4 (RNAV) SID DME_241105.tgs
Output File:	C:\Users\Mark CTR Thompson\OneDrive - Federal Aviation Administration\Desktop\RNAV Projects\RNAV Projects 2025\MCO SIDs\MCO JEEMY SID\DME\KMCO [IFPA] JEEMY4 20241105_0812 EST\KMCO-RW17R-DER_KAAPE\KMCO JEEMY4 SID RW17R KAAPE 20241105_0812 EST.pdf
Procedure Name:	JEEMY4
Software: DmeDmePlugin:	7.4.0
Date/Time:	11/05/2024 08:12 EST
Databases:	MITRE 3DEP 3 arcsec

Failures
No Failures

Warnings
No Warnings

Informational
No Informational

Notes For Flight Check
None

Flight Plan							
Name	Type	Lat/Lon	Altitude (ft)	VNAV Mode	Ground Speed (kts)	Turn Type	Leg Type
KMCO:RW17R:DER	WP	N28° 24' 29.20", W081° 17' 44.13"	86.7	VNAV	130	FLY_BY	TF
KAAPE	WP	N28° 20' 56.58", W081° 16' 05.60"	876.5	VNAV	200	FLY_BY	TF
Climb Gradient: 200.0 ft/NM							

Flyability	
Flight Type:	SID
Selected Airport:	KMCO [IFPA]
Climb Gradient:	200.0 ft/NM
Speeds:	130 at the Runway DER
	145 at the end of the VA or VI leg
	200 Ground Speed to 11000 FT
	240 Ground Speed to 18000 FT
	260 Ground Speed to 24000 FT
	340 Ground Speed above 24000 FT
Descent During a Turn:	Allowed
VNAV Mode:	Flight Plan

DME DME Assessment Results for JEEMY4 path KMCO:RW17R:DER_KAAPE

DME/DME	
RNP:	RNP 2
Flight Mode:	Manual
Line of Sight (DTED Level 0 Max):	Evaluated
Inertial Drift:	Enabled
Initial Drift:	0.558 NM
INS Drift Rate:	8.0 NM/Hour
Range Mode:	OSV
RNP Edges:	Evaluated
Min DME Range:	3.0 NM
DME Types:	DME, VOR-DME, VORTAC, TACAN
DME Include Angles:	30 to 150
Critical DMEs:	Allowed
DoD Facilities:	Included
Foreign Facilities:	Not included
High DMEs:	Included
Low DMEs:	Included
Terminal DMEs:	Included
Flight Check DMEs:	Not selected
Higher Altitudes:	Not Evaluated
Near Maximum Altitude:	Not Evaluated
Automatic ESVs:	Not enabled
Disabled DMEs:	None

DME/DME (Continued)										
DMEs Used										
#	Name	Lat/Lon	MAGVAR	Range	Type	Source	Critical	Status	Time	Distance

Flight Check DME Selection						
Distance [NM]	Selected DMEs					Alternate
0.0						

Inertial Drift Segments			
#	Start Location	End Location	Length [NM]
1	N28° 24' 27.04", W081° 17' 44.11"	N28° 20' 56.58", W081° 16' 05.60"	3.9166

Available DMEs by Waypoints			
Waypoint Before	Waypoint After	DME List	Suggested DMEs
KMCO:RW17R:DER	KAAPE		

DME DME Assessment Results for JEEMY4 path KMCO:RW17R:DER_KAAPE

User Data Files

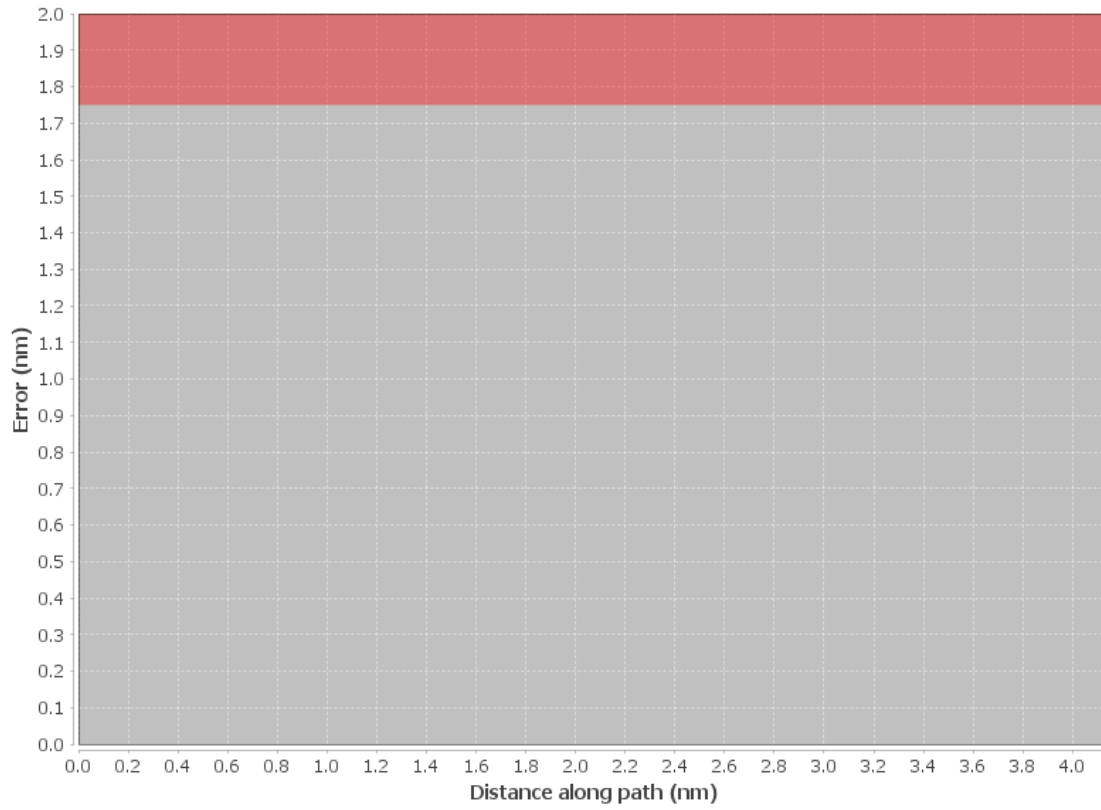
#	File Name
None	

None

User DMEs

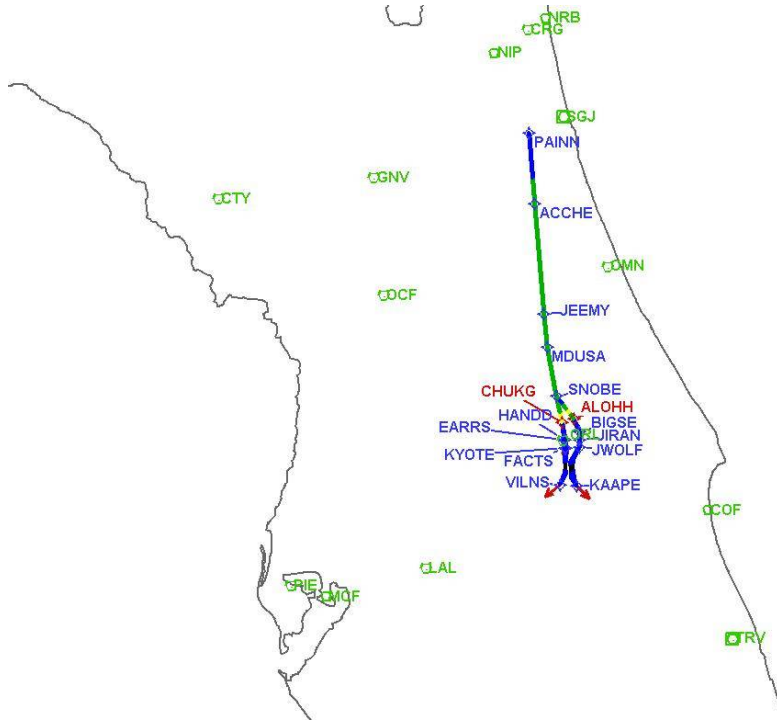
#	Name	Lat/Lon	MAGVAR	Range	Elevation [ft]	Frequency	Replaces	Status
1	OCF FAA 714002-18 OCF	N29° 10' 38.92", W082° 13' 34.80"	0.0 E	40	78.3	113.7	OCF FAA 714002-18	
ESV:		Bearing [True]: 117.0° to 180.0° Bearing [Mag]: 117.0° to 180.0°				Arc Distance: Out to 80.0 NM Altitude: 4000.0 to 20000.0 ft		
2	OCF FAA 714002-32 OCF	N29° 10' 38.92", W082° 13' 34.80"	0.0 E	40	78.3	113.7	OCF FAA 714002-32	
ESV:		Bearing [True]: 50.0° to 120.0° Bearing [Mag]: 50.0° to 120.0°				Arc Distance: Out to 80.0 NM Altitude: 5000.0 to 18000.0 ft		
3	LAL FAA 704224-41 LAL	N27° 59' 10.31", W082° 00' 50.06"	1.0 E	130	133.8	116.0	LAL FAA 704224-41	
ESV:		Bearing [True]: 360.0° to 77.0° Bearing [Mag]: 359.0° to 76.0°				Arc Distance: Out to 70.0 NM Altitude: 3000.0 to 14700.0 ft		
4	ORL FAA 694096-50 ORL	N28° 32' 33.80", W081° 20' 06.05"	0.0 E	130	101.6	112.2	ORL FAA 694096-50	
ESV:		Bearing [True]: 345.0° to 5.0° Bearing [Mag]: 345.0° to 5.0°				Arc Distance: Out to 80.0 NM Altitude: 4000.0 to 14500.0 ft		
5	OMN FAA 694106-20 OMN	N29° 18' 11.70", W081° 06' 45.71"	0.0 E	130	24	112.6	OMN FAA 694106-20	
ESV:		Bearing [True]: 190.0° to 255.0° Bearing [Mag]: 190.0° to 255.0°				Arc Distance: Out to 72.0 NM Altitude: 3000.0 to 14600.0 ft		

DME Error



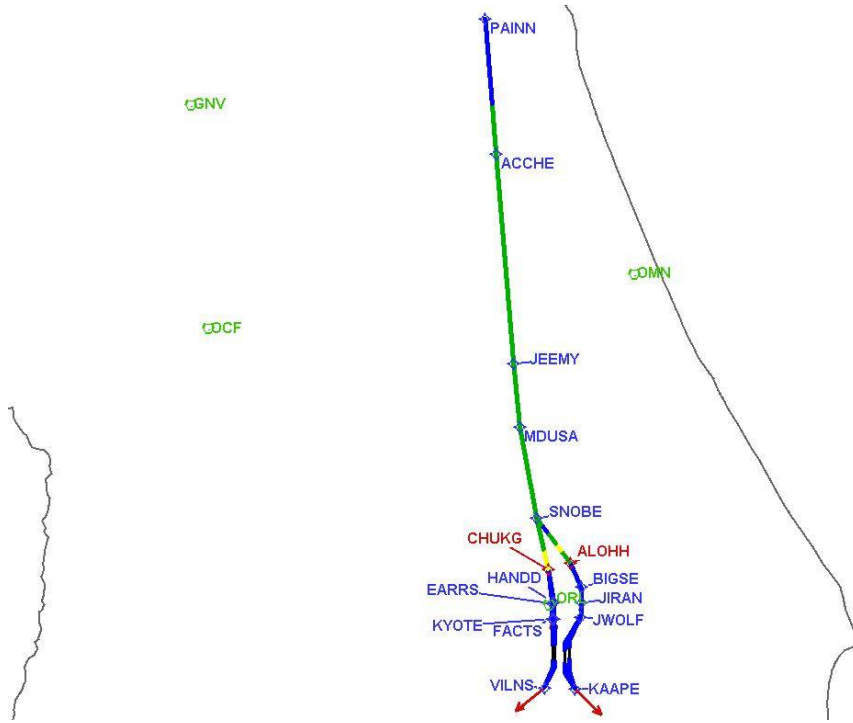
DME DME Assessment Results for JEEMY4 path KMCO:RW17R:DER_KAAPE

Graphic Depiction 1



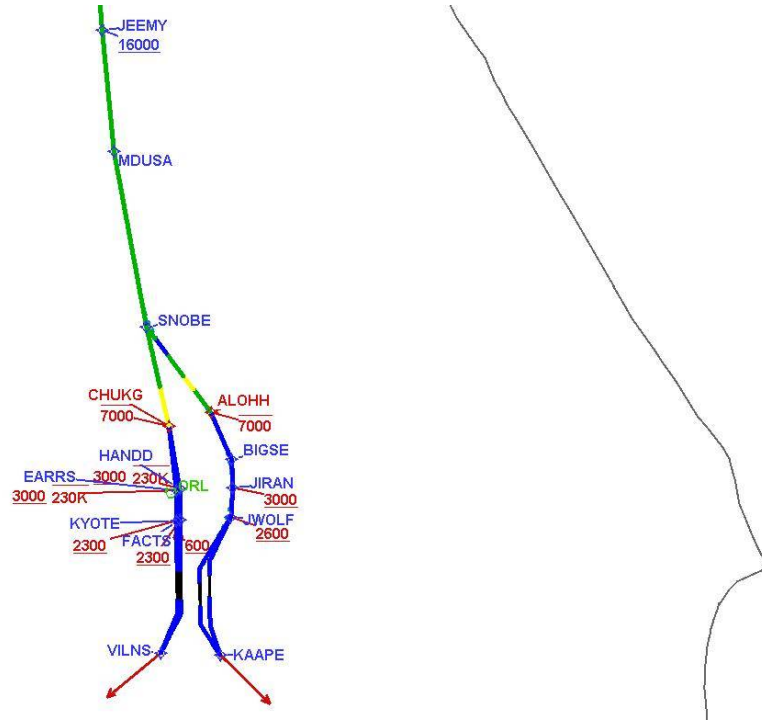
DME DME Assessment Results for JEEMY4 path KMCO:RW17R:DER_KAAPE

Graphic Depiction 2



DME DME Assessment Results for JEEMY4 path KMCO:RW17R:DER_KAAPE

Graphic Depiction 3



DME DME Assessment Results for JEEMY4 path KMCO:RW18L:DER_VILNS

Results Summary

Flyability:	Completed
DME/DME:	Completed - No Critical DMEs
Name:	Mark CTR Thompson
Project File:	C:\Users\Mark CTR Thompson\OneDrive - Federal Aviation Administration\Desktop\RNAV Projects\RNAV Projects 2025\MCO SIDs\MCO JEEMY SID\DME\KMCO JEEMY4 (RNAV) SID DME_241105.tgs
Output File:	C:\Users\Mark CTR Thompson\OneDrive - Federal Aviation Administration\Desktop\RNAV Projects\RNAV Projects 2025\MCO SIDs\MCO JEEMY SID\DME\KMCO [IFPA] JEEMY4 20241105_0812 EST\KMCO-RW18L-DER_VILNS\KMCO JEEMY4 SID RW18L VILNS 20241105_0812 EST.pdf
Procedure Name:	JEEMY4
Software: DmeDmePlugin:	7.4.0
Date/Time:	11/05/2024 08:12 EST
Databases:	MITRE 3DEP 3 arcsec

Failures

No Failures

Warnings

No Warnings

Informational

No Informational

Notes For Flight Check

None

Flight Plan

Name	Type	Lat/Lon	Altitude (ft)	VNAV Mode	Ground Speed (kts)	Turn Type	Leg Type
KMCO:RW18L:DER	WP	N28° 24' 55.15", W081° 19' 19.04"	91	VNAV	130	FLY_BY	TF
VILNS	WP	N28° 21' 07.79", W081° 20' 55.28"	894.7	VNAV	200	FLY_BY	TF

Climb Gradient:
200.0 ft/NM

Flyability

Flight Type:	SID
Selected Airport:	KMCO [IFPA]
Climb Gradient:	200.0 ft/NM
Speeds:	130 at the Runway DER
	145 at the end of the VA or VI leg
	200 Ground Speed to 11000 FT
	240 Ground Speed to 18000 FT
	260 Ground Speed to 24000 FT
	340 Ground Speed above 24000 FT
Descent During a Turn:	Allowed
VNAV Mode:	Flight Plan

DME DME Assessment Results for JEEMY4 path KMCO:RW18L:DER_VILNS

DME/DME	
RNP:	RNP 2
Flight Mode:	Manual
Line of Sight (DTED Level 0 Max):	Evaluated
Inertial Drift:	Enabled
Initial Drift:	0.558 NM
INS Drift Rate:	8.0 NM/Hour
Range Mode:	OSV
RNP Edges:	Evaluated
Min DME Range:	3.0 NM
DME Types:	DME, VOR-DME, VORTAC, TACAN
DME Include Angles:	30 to 150
Critical DMEs:	Allowed
DoD Facilities:	Included
Foreign Facilities:	Not included
High DMEs:	Included
Low DMEs:	Included
Terminal DMEs:	Included
Flight Check DMEs:	Not selected
Higher Altitudes:	Not Evaluated
Near Maximum Altitude:	Not Evaluated
Automatic ESVs:	Not enabled
Disabled DMEs:	None

DME/DME (Continued)

DMEs Used

#	Name	Lat/Lon	MAGVAR	Range	Type	Source	Critical	Status	Time	Distance
---	------	---------	--------	-------	------	--------	----------	--------	------	----------

Flight Check DME Selection

Distance [NM]	Selected DMEs	Alternate
0.0		

Inertial Drift Segments

#	Start Location	End Location	Length [NM]
1	N28° 24' 52.98", W081° 19' 19.01"	N28° 21' 07.79", W081° 20' 55.28"	4.0948

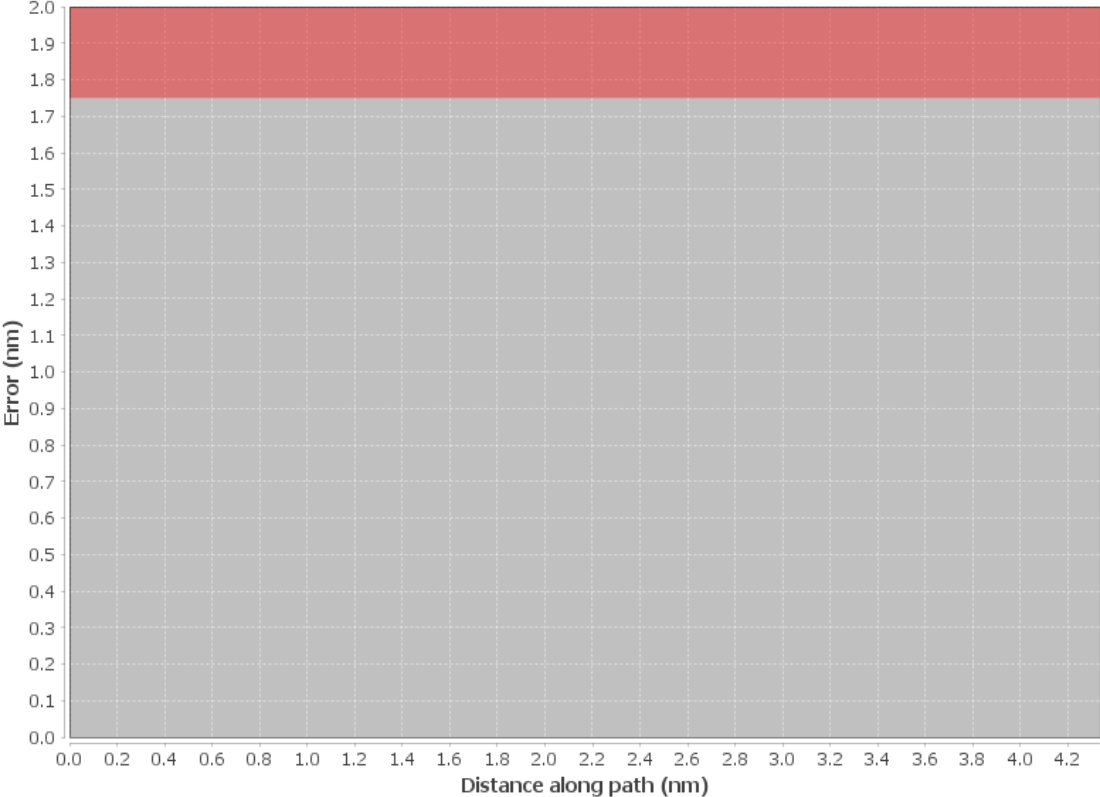
Available DMEs by Waypoints

Waypoint Before	Waypoint After	DME List	Suggested DMEs
KMCO:RW18L:DER	VILNS		

DME DME Assessment Results for JEEMY4 path KMCO:RW18L:DER_VILNS

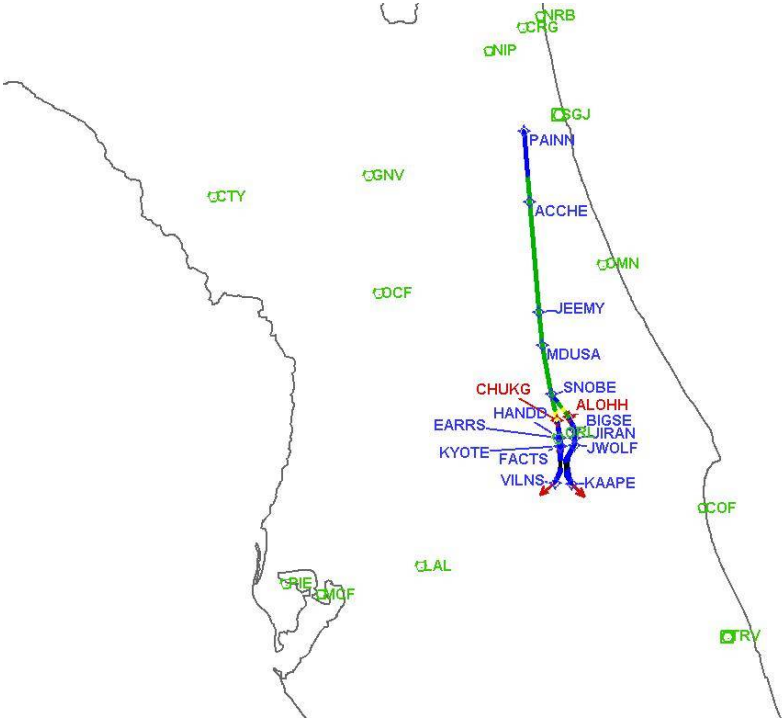
User Data Files								
#	File Name							
None								
User DMEs								
#	Name	Lat/Lon	MAGVAR	Range	Elevation [ft]	Frequency	Replaces	Status
1	OCF FAA 714002-18 OCF	N29° 10' 38.92", W082° 13' 34.80"	0.0 E	40	78.3	113.7	OCF FAA 714002-18	
ESV:		Bearing [True]: 117.0° to 180.0° Bearing [Mag]: 117.0° to 180.0°				Arc Distance: Out to 80.0 NM Altitude: 4000.0 to 20000.0 ft		
2	OCF FAA 714002-32 OCF	N29° 10' 38.92", W082° 13' 34.80"	0.0 E	40	78.3	113.7	OCF FAA 714002-32	
ESV:		Bearing [True]: 50.0° to 120.0° Bearing [Mag]: 50.0° to 120.0°				Arc Distance: Out to 80.0 NM Altitude: 5000.0 to 18000.0 ft		
3	LAL FAA 704224-41 LAL	N27° 59' 10.31", W082° 00' 50.06"	1.0 E	130	133.8	116.0	LAL FAA 704224-41	
ESV:		Bearing [True]: 360.0° to 77.0° Bearing [Mag]: 359.0° to 76.0°				Arc Distance: Out to 70.0 NM Altitude: 3000.0 to 14700.0 ft		
4	ORL FAA 694096-50 ORL	N28° 32' 33.80", W081° 20' 06.05"	0.0 E	130	101.6	112.2	ORL FAA 694096-50	
ESV:		Bearing [True]: 345.0° to 5.0° Bearing [Mag]: 345.0° to 5.0°				Arc Distance: Out to 80.0 NM Altitude: 4000.0 to 14500.0 ft		
5	OMN FAA 694106-20 OMN	N29° 18' 11.70", W081° 06' 45.71"	0.0 E	130	24	112.6	OMN FAA 694106-20	
ESV:		Bearing [True]: 190.0° to 255.0° Bearing [Mag]: 190.0° to 255.0°				Arc Distance: Out to 72.0 NM Altitude: 3000.0 to 14600.0 ft		

DME Error



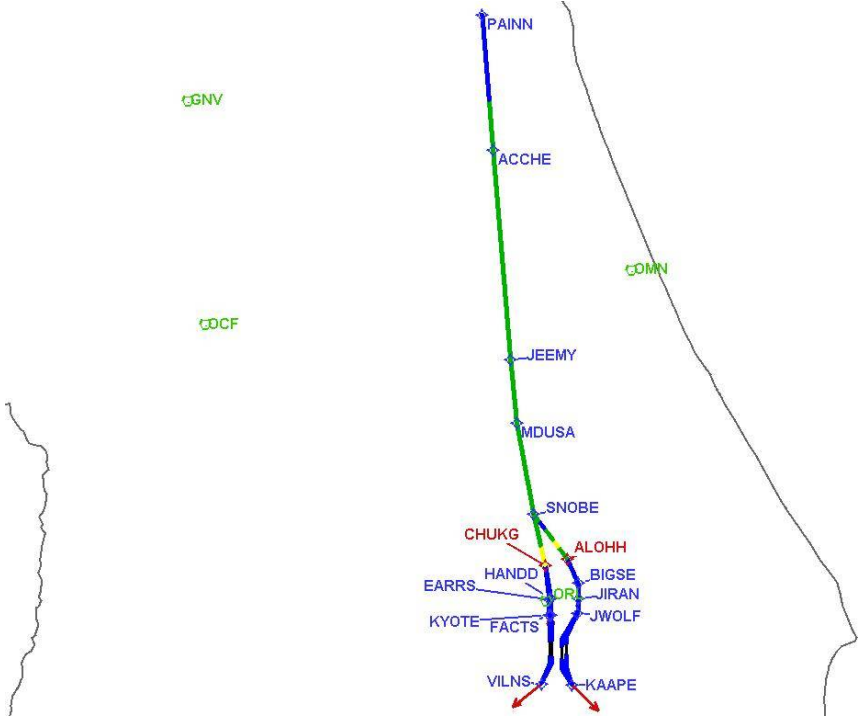
DME DME Assessment Results for JEEMY4 path KMCO:RW18L:DER_VILNS

Graphic Depiction 1



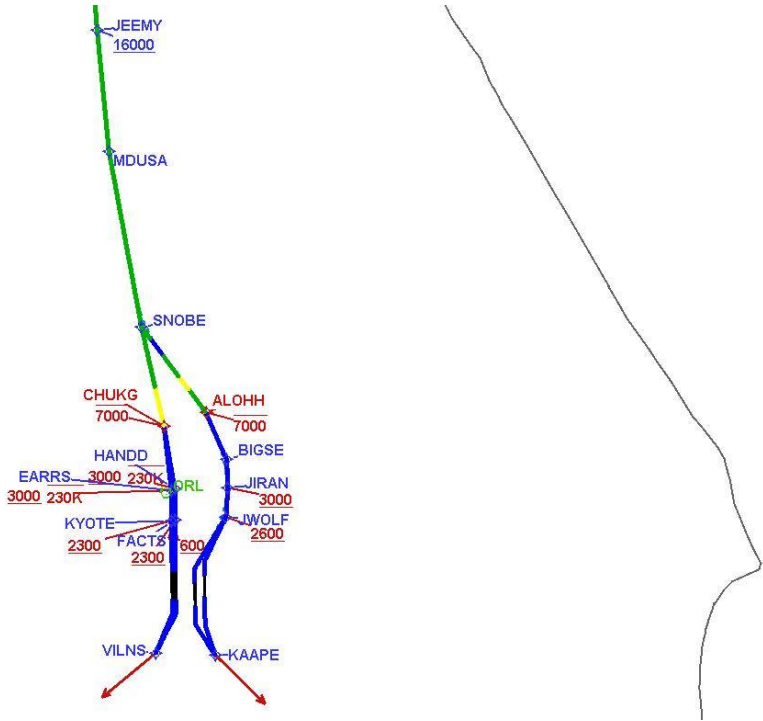
DME DME Assessment Results for JEEMY4 path KMCO:RW18L:DER_VILNS

Graphic Depiction 2



DME DME Assessment Results for JEEMY4 path KMCO:RW18L:DER_VILNS

Graphic Depiction 3



DME DME Assessment Results for JEEMY4 path KMCO:RW18R:DER_VILNS

Results Summary	
Flyability:	Completed
DME/DME:	Completed - No Critical DMEs
Name:	Mark CTR Thompson
Project File:	C:\Users\Mark CTR Thompson\OneDrive - Federal Aviation Administration\Desktop\RNAV Projects\RNAV Projects 2025\MCO SIDs\MCO JEEMY SID\DME\KMCO JEEMY4 (RNAV) SID DME_241105.tgs
Output File:	C:\Users\Mark CTR Thompson\OneDrive - Federal Aviation Administration\Desktop\RNAV Projects\RNAV Projects 2025\MCO SIDs\MCO JEEMY SID\DME\KMCO [IFPA] JEEMY4 20241105_0812 EST\KMCO-RW18R-DER_VILNS\KMCO JEEMY4 SID RW18R VILNS 20241105_0812 EST.pdf
Procedure Name:	JEEMY4
Software: DmeDmePlugin:	7.4.0
Date/Time:	11/05/2024 08:12 EST
Databases:	MITRE 3DEP 3 arcsec

Failures
No Failures

Warnings
No Warnings

Informational
No Informational

Notes For Flight Check
None

Flight Plan							
Name	Type	Lat/Lon	Altitude (ft)	VNAV Mode	Ground Speed (kts)	Turn Type	Leg Type
KMCO:RW18R:DER	WP	N28° 24' 55.01", W081° 19' 35.83"	91.1	VNAV	130	FLY_BY	TF
VILNS	WP	N28° 21' 07.79", W081° 20' 55.28"	894.7	VNAV	200	FLY_BY	TF
Climb Gradient: 200.0 ft/NM							

Flyability	
Flight Type:	SID
Selected Airport:	KMCO [IFPA]
Climb Gradient:	200.0 ft/NM
Speeds:	130 at the Runway DER
	145 at the end of the VA or VI leg
	200 Ground Speed to 11000 FT
	240 Ground Speed to 18000 FT
	260 Ground Speed to 24000 FT
	340 Ground Speed above 24000 FT
Descent During a Turn:	Allowed
VNAV Mode:	Flight Plan

DME DME Assessment Results for JEEMY4 path KMCO:RW18R:DER_VILNS

DME/DME	
RNP:	RNP 2
Flight Mode:	Manual
Line of Sight (DTED Level 0 Max):	Evaluated
Inertial Drift:	Enabled
Initial Drift:	0.558 NM
INS Drift Rate:	8.0 NM/Hour
Range Mode:	OSV
RNP Edges:	Evaluated
Min DME Range:	3.0 NM
DME Types:	DME, VOR-DME, VORTAC, TACAN
DME Include Angles:	30 to 150
Critical DMEs:	Allowed
DoD Facilities:	Included
Foreign Facilities:	Not included
High DMEs:	Included
Low DMEs:	Included
Terminal DMEs:	Included
Flight Check DMEs:	Not selected
Higher Altitudes:	Not Evaluated
Near Maximum Altitude:	Not Evaluated
Automatic ESVs:	Not enabled
Disabled DMEs:	None

DME/DME (Continued)

DMEs Used

#	Name	Lat/Lon	MAGVAR	Range	Type	Source	Critical	Status	Time	Distance
---	------	---------	--------	-------	------	--------	----------	--------	------	----------

Flight Check DME Selection

Distance [NM]	Selected DMEs	Alternate
0.0		

Inertial Drift Segments

#	Start Location	End Location	Length [NM]
1	N28° 24' 52.89", W081° 19' 35.81"	N28° 21' 07.79", W081° 20' 55.28"	3.9856

Available DMEs by Waypoints

Waypoint Before	Waypoint After	DME List	Suggested DMEs
KMCO:RW18R:DER	VILNS		

DME DME Assessment Results for JEEMY4 path KMCO:RW18R:DER_VILNS

User Data Files

#	File Name
None	

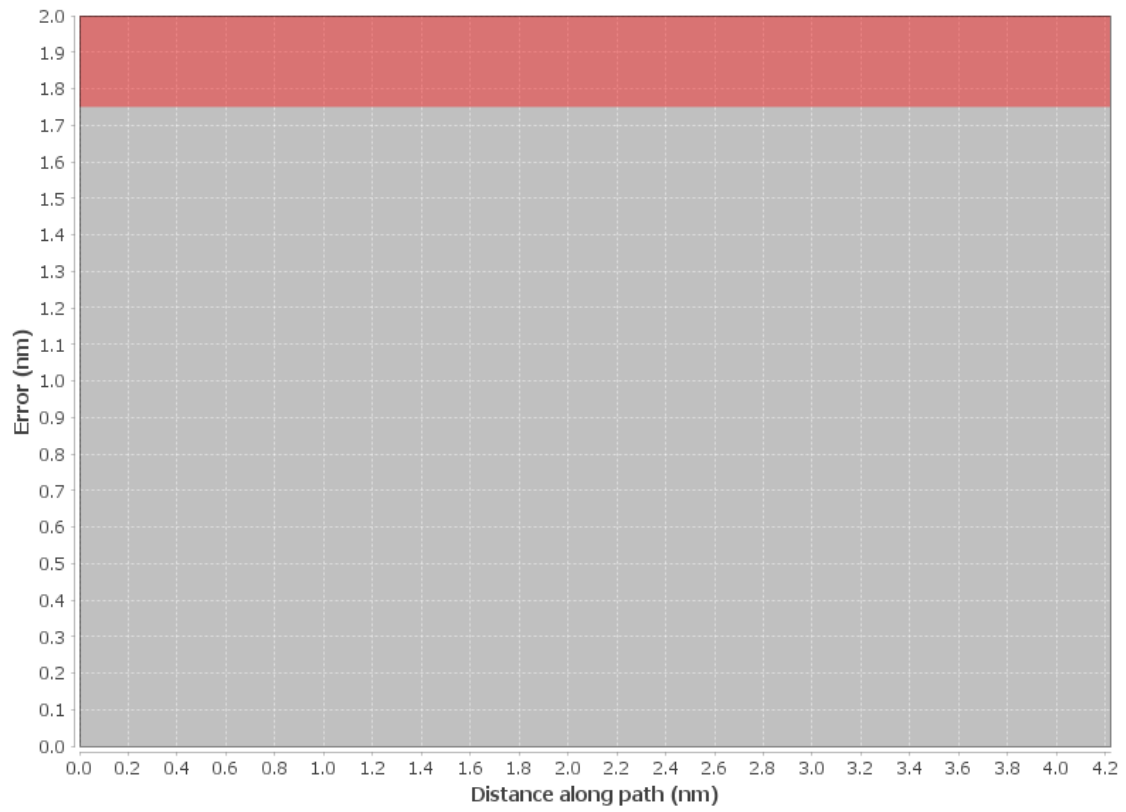
None

User DMEs

#	Name	Lat/Lon	MAGVAR	Range	Elevation [ft]	Frequency	Replaces	Status
1	OCF FAA 714002-18 OCF	N29° 10' 38.92", W082° 13' 34.80"	0.0 E	40	78.3	113.7	OCF FAA 714002-18	
ESV:		Bearing [True]: 117.0° to 180.0° Bearing [Mag]: 117.0° to 180.0°				Arc Distance: Out to 80.0 NM Altitude: 4000.0 to 20000.0 ft		
2	OCF FAA 714002-32 OCF	N29° 10' 38.92", W082° 13' 34.80"	0.0 E	40	78.3	113.7	OCF FAA 714002-32	
ESV:		Bearing [True]: 50.0° to 120.0° Bearing [Mag]: 50.0° to 120.0°				Arc Distance: Out to 80.0 NM Altitude: 5000.0 to 18000.0 ft		
3	LAL FAA 704224-41 LAL	N27° 59' 10.31", W082° 00' 50.06"	1.0 E	130	133.8	116.0	LAL FAA 704224-41	
ESV:		Bearing [True]: 360.0° to 77.0° Bearing [Mag]: 359.0° to 76.0°				Arc Distance: Out to 70.0 NM Altitude: 3000.0 to 14700.0 ft		
4	ORL FAA 694096-50 ORL	N28° 32' 33.80", W081° 20' 06.05"	0.0 E	130	101.6	112.2	ORL FAA 694096-50	
ESV:		Bearing [True]: 345.0° to 5.0° Bearing [Mag]: 345.0° to 5.0°				Arc Distance: Out to 80.0 NM Altitude: 4000.0 to 14500.0 ft		
5	OMN FAA 694106-20 OMN	N29° 18' 11.70", W081° 06' 45.71"	0.0 E	130	24	112.6	OMN FAA 694106-20	
ESV:		Bearing [True]: 190.0° to 255.0° Bearing [Mag]: 190.0° to 255.0°				Arc Distance: Out to 72.0 NM Altitude: 3000.0 to 14600.0 ft		

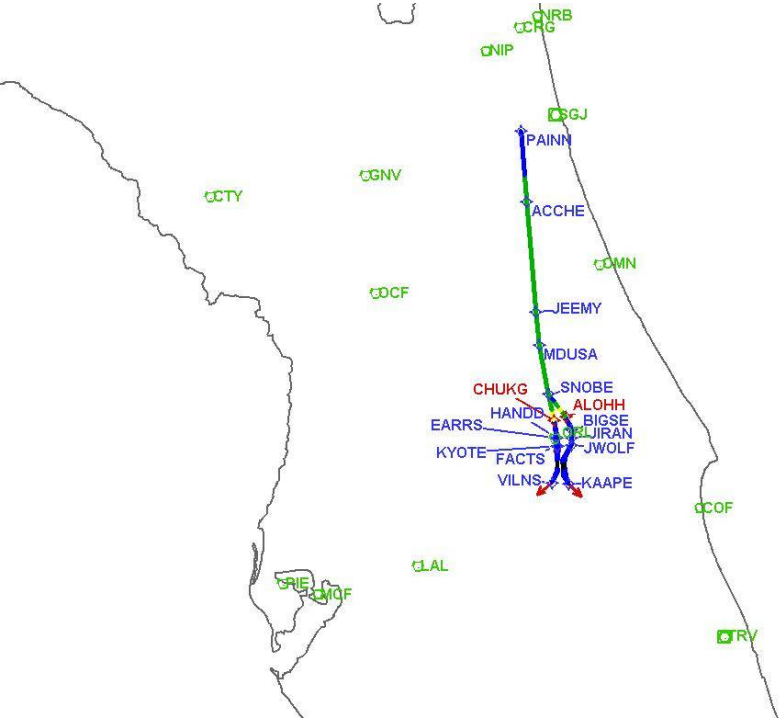
DME DME Assessment Results for JEEMY4 path KMCO:RW18R:DER_VILNS

DME Error



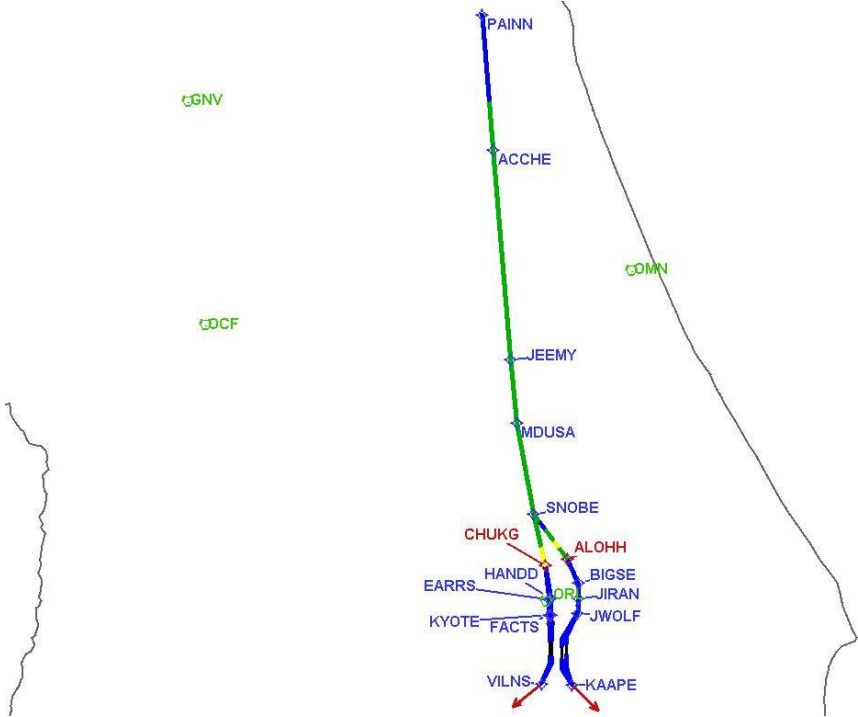
DME DME Assessment Results for JEEMY4 path KMCO:RW18R:DER_VILNS

Graphic Depiction 1



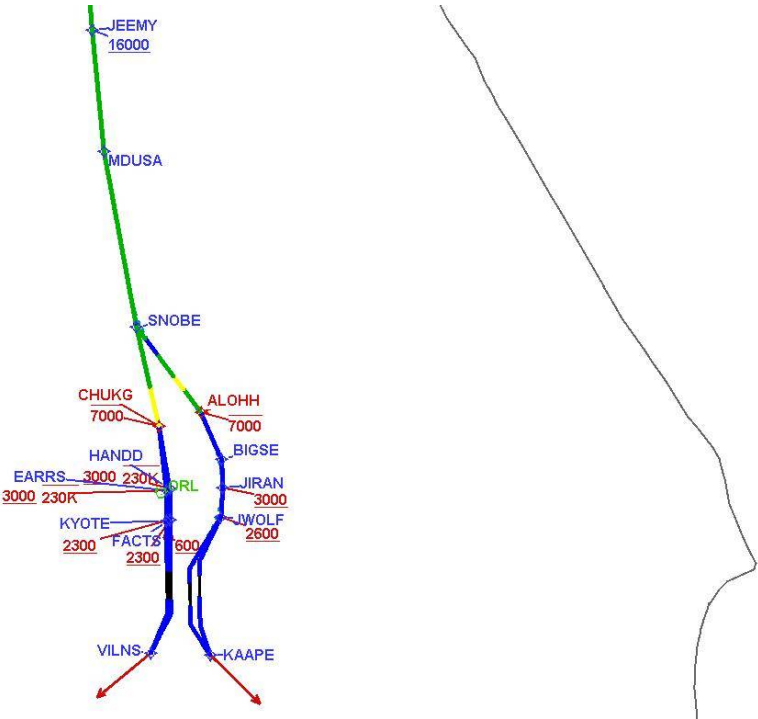
DME DME Assessment Results for JEEMY4 path KMCO:RW18R:DER_VILNS

Graphic Depiction 2



DME DME Assessment Results for JEEMY4 path KMCO:RW18R:DER_VILNS

Graphic Depiction 3



DME DME Assessment Results for JEEMY4 path KMCO:RW35L:DER_PAINN

Results Summary	
Flyability:	Completed
DME/DME:	Completed - No Critical DMEs
Name:	Mark CTR Thompson
Project File:	C:\Users\Mark CTR Thompson\OneDrive - Federal Aviation Administration\Desktop\RNAV Projects\RNAV Projects 2025\MCO SIDs\MCO JEEMY SID\DME\KMCO JEEMY4 (RNAV) SID DME_241105.tgs
Output File:	C:\Users\Mark CTR Thompson\OneDrive - Federal Aviation Administration\Desktop\RNAV Projects\RNAV Projects 2025\MCO SIDs\MCO JEEMY SID\DME\KMCO [IFPA] JEEMY4 20241105_0812 EST\KMCO-RW35L-DER_PAINN\KMCO JEEMY4 SID RW35L PAINN 20241105_0812 EST.pdf
Procedure Name:	JEEMY4
Software: DmeDmePlugin:	7.4.0
Date/Time:	11/05/2024 08:12 EST
Databases:	MITRE 3DEP 3 arcsec

Failures
No Failures

Warnings
No Warnings

Informational
No Informational

Notes For Flight Check
None

Flight Plan							
Name	Type	Lat/Lon	Altitude (ft)	VNAV Mode	Ground Speed (kts)	Turn Type	Leg Type
KMCO:RW35L:DER	WP	N28° 26' 08.20", W081° 17' 45.17"	90.1	VNAV	130	FLY_BY	TF
JWOLF	WP	N28° 30' 51.68", W081° 15' 12.47"	2000	VNAV	200	FLY_BY	TF
JIRAN	WP	N28° 32' 57.24", W081° 15' 03.58"	2500	VNAV	200	FLY_BY	TF
BIGSE	WP	N28° 35' 00.48", W081° 15' 08.80"	3000	VNAV	200	FLY_BY	TF
ALOHH	WP	N28° 38' 23.12", W081° 16' 49.81"	4000	VNAV	200	FLY_BY	TF
SNOBE	WP	N28° 44' 32.37", W081° 22' 06.90"	4000	VNAV	200	FLY_BY	TF
MDUSA	WP	N28° 57' 09.14", W081° 24' 46.44"	5000	VNAV	200	FLY_BY	TF
JEEMY	WP	N29° 05' 52.92", W081° 25' 44.41"	8000	VNAV	200	FLY_BY	TF
ACCHE	WP	N29° 34' 43.02", W081° 28' 29.19"	8000	VNAV	200	FLY_BY	TF
PAINN	WP	N29° 53' 24.66", W081° 30' 11.05"	12000	VNAV	240	FLY_BY	TF
Climb Gradient: 200.0 ft/NM							

DME DME Assessment Results for JEEMY4 path KMCO:RW35L:DER_PAINN

Flyability	
Flight Type:	SID
Selected Airport:	KMCO [IFPA]
Climb Gradient:	200.0 ft/NM
Speeds:	130 at the Runway DER
	145 at the end of the VA or VI leg
	200 Ground Speed to 11000 FT
	240 Ground Speed to 18000 FT
	260 Ground Speed to 24000 FT
	340 Ground Speed above 24000 FT
Descent During a Turn:	Allowed
VNAV Mode:	Flight Plan

DME/DME	
RNP:	RNP 2
Flight Mode:	Manual
Line of Sight (DTED Level 0 Max):	Evaluated
Inertial Drift:	Enabled
Initial Drift:	0.558 NM
INS Drift Rate:	8.0 NM/Hour
Range Mode:	OSV
RNP Edges:	Evaluated
Min DME Range:	3.0 NM
DME Types:	DME, VOR-DME, VORTAC, TACAN
DME Include Angles:	30 to 150
Critical DMEs:	Allowed
DoD Facilities:	Included
Foreign Facilities:	Not included
High DMEs:	Included
Low DMEs:	Included
Terminal DMEs:	Included
Flight Check DMEs:	Not selected
Higher Altitudes:	Not Evaluated
Near Maximum Altitude:	Not Evaluated
Automatic ESVs:	Not enabled
Disabled DMEs:	None

DME/DME (Continued)										
DMEs Used										
#	Name	Lat/Lon	MAGVAR	Range	Type	Source	Critical	Status	Time	Distance
1	OMN	N29° 18' 11.70", W081° 06' 45.71"	0.0 E	130	H		NO	Enabled	53.1 %	53.9 %
2	OCF	N29° 10' 38.92", W082° 13' 34.80"	0.0 E	40	L		NO	Enabled	52.8 %	53.6 %
3	LAL	N27° 59' 10.31", W082° 00' 50.06"	1.0 E	130	H		NO	Enabled	22.8 %	23.1 %
4	ORL	N28° 32' 33.80", W081° 20' 06.05"	0.0 E	130	H		NO	Enabled	69.2 %	70.3 %

DME DME Assessment Results for JEEMY4 path KMCO:RW35L:DER_PAINN

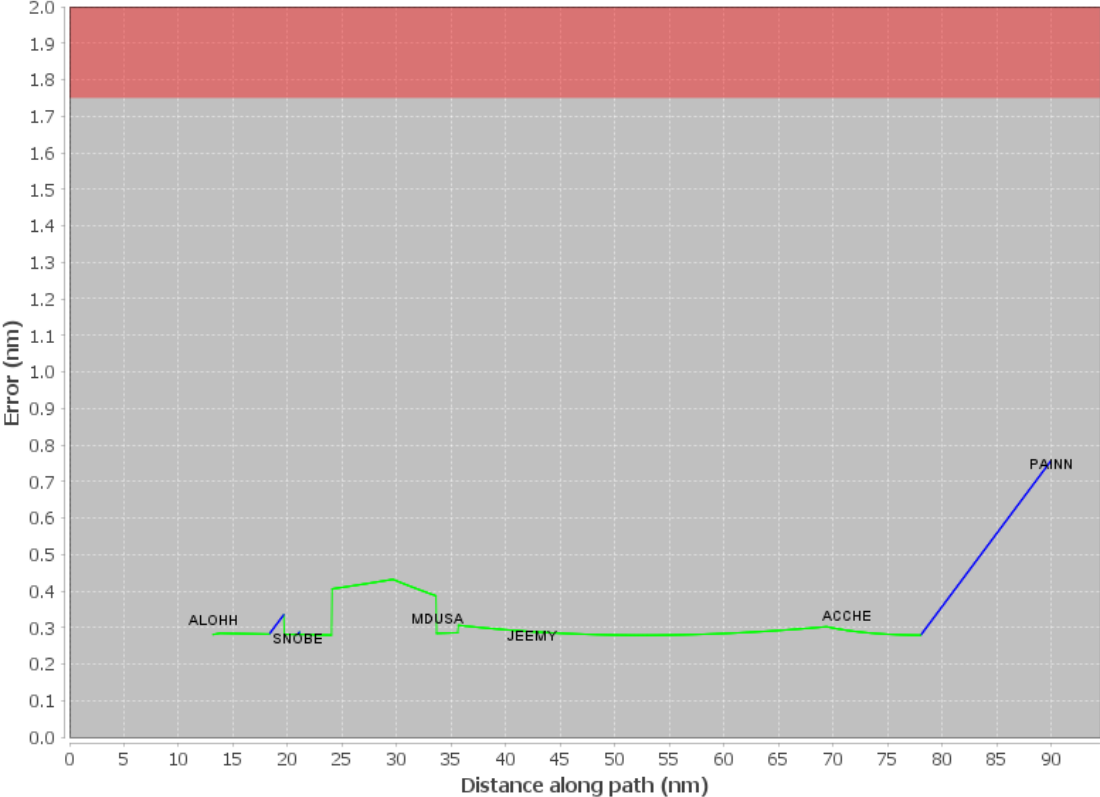
Flight Check DME Selection					
Distance [NM]	Selected DMEs				Alternate
0.0					
13.2	OCF	ORL	LAL		
14.4	OCF	LAL	ORL	OMN	
18.4					
19.7	LAL	ORL			
20.9	OCF	LAL	OMN	ORL	
21.0					
21.1	LAL	ORL			
33.4	ORL	OMN	LAL		
33.7	OCF	LAL	OMN	ORL	
35.7	OCF	ORL	OMN		
76.8	ORL	OMN			
78.1					

Inertial Drift Segments			
#	Start Location	End Location	Length [NM]
1	N28° 26' 10.32", W081° 17' 45.19"	N28° 38' 23.12", W081° 16' 49.81"	13.1508
2	N28° 42' 32.85", W081° 20' 24.18"	N28° 43' 36.60", W081° 21' 18.95"	1.3294
3	N28° 44' 38.92", W081° 22' 08.28"	N28° 44' 48.75", W081° 22' 10.35"	0.1662
4	N29° 41' 32.41", W081° 29' 06.29"	N29° 53' 24.66", W081° 30' 11.05"	11.879

Available DMEs by Waypoints			
Waypoint Before	Waypoint After	DME List	Suggested DMEs
KMCO:RW35L:DER	JWOLF		
JWOLF	JIRAN		
JIRAN	BIGSE		
BIGSE	ALOHH	OCF, LAL, ORL	
ALOHH	SNOBE	OMN, OCF, LAL, ORL	
SNOBE	MDUSA	OMN, OCF, LAL, ORL	
MDUSA	JEEMY	OMN, OCF, LAL, ORL	
JEEMY	ACCHE	OMN, OCF, ORL	
ACCHE	PAINN	OMN, OCF, ORL	

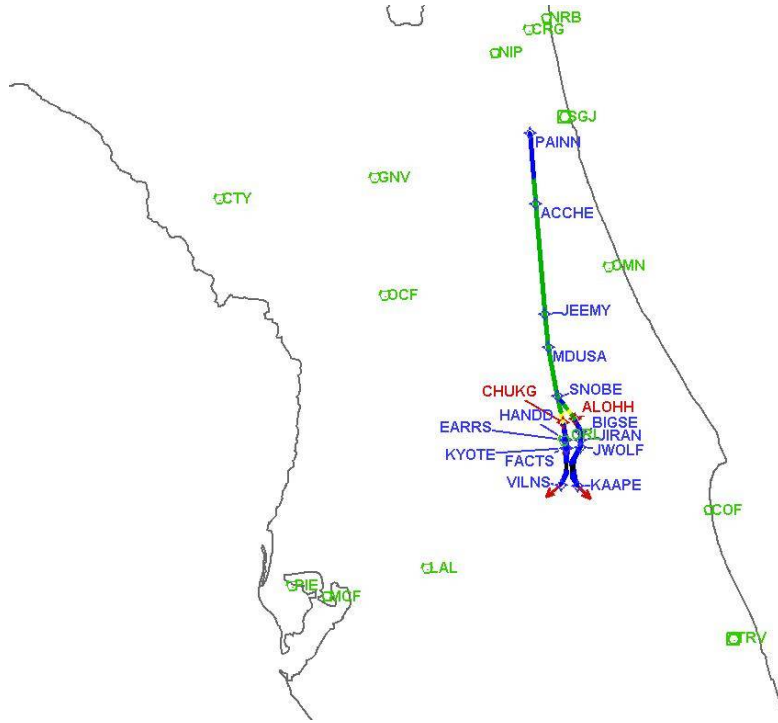
User Data Files								
#	File Name							
None								
User DMEs								
#	Name	Lat/Lon	MAGVAR	Range	Elevation [ft]	Frequency	Replaces	Status
1	OCF FAA 714002-18 OCF	N29° 10' 38.92", W082° 13' 34.80"	0.0 E	40	78.3	113.7	OCF FAA 714002-18	
ESV:		Bearing [True]: 117.0° to 180.0° Bearing [Mag]: 117.0° to 180.0°				Arc Distance: Out to 80.0 NM Altitude: 4000.0 to 20000.0 ft		
2	OCF FAA 714002-32 OCF	N29° 10' 38.92", W082° 13' 34.80"	0.0 E	40	78.3	113.7	OCF FAA 714002-32	
ESV:		Bearing [True]: 50.0° to 120.0° Bearing [Mag]: 50.0° to 120.0°				Arc Distance: Out to 80.0 NM Altitude: 5000.0 to 18000.0 ft		
3	LAL FAA 704224-41 LAL	N27° 59' 10.31", W082° 00' 50.06"	1.0 E	130	133.8	116.0	LAL FAA 704224-41	
ESV:		Bearing [True]: 360.0° to 77.0° Bearing [Mag]: 359.0° to 76.0°				Arc Distance: Out to 70.0 NM Altitude: 3000.0 to 14700.0 ft		
4	ORL FAA 694096-50 ORL	N28° 32' 33.80", W081° 20' 06.05"	0.0 E	130	101.6	112.2	ORL FAA 694096-50	
ESV:		Bearing [True]: 345.0° to 5.0° Bearing [Mag]: 345.0° to 5.0°				Arc Distance: Out to 80.0 NM Altitude: 4000.0 to 14500.0 ft		
5	OMN FAA 694106-20 OMN	N29° 18' 11.70", W081° 06' 45.71"	0.0 E	130	24	112.6	OMN FAA 694106-20	
ESV:		Bearing [True]: 190.0° to 255.0° Bearing [Mag]: 190.0° to 255.0°				Arc Distance: Out to 72.0 NM Altitude: 3000.0 to 14600.0 ft		

DME Error



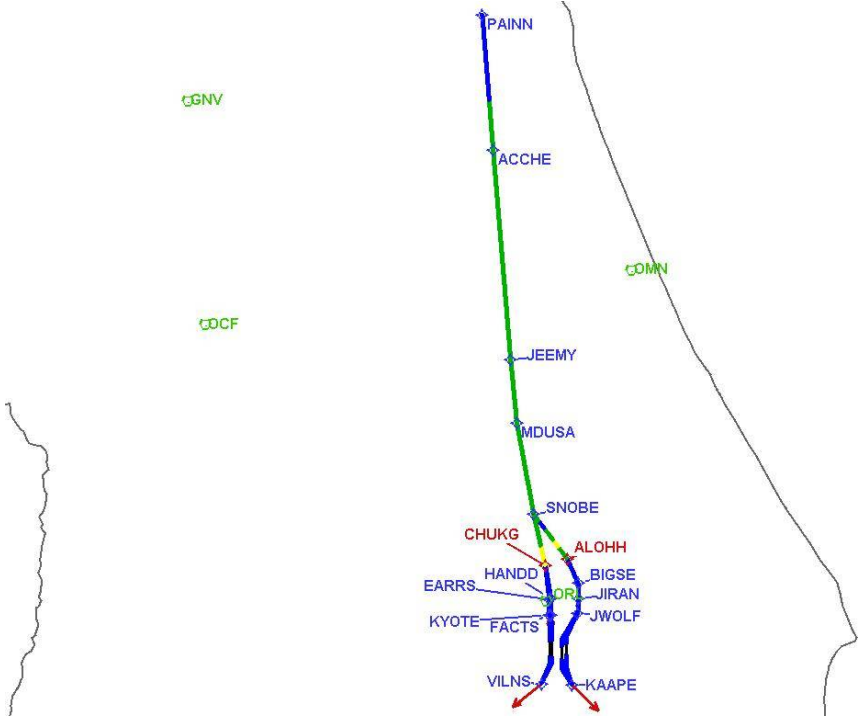
DME DME Assessment Results for JEEMY4 path KMCO:RW35L:DER_PAINN

Graphic Depiction 1



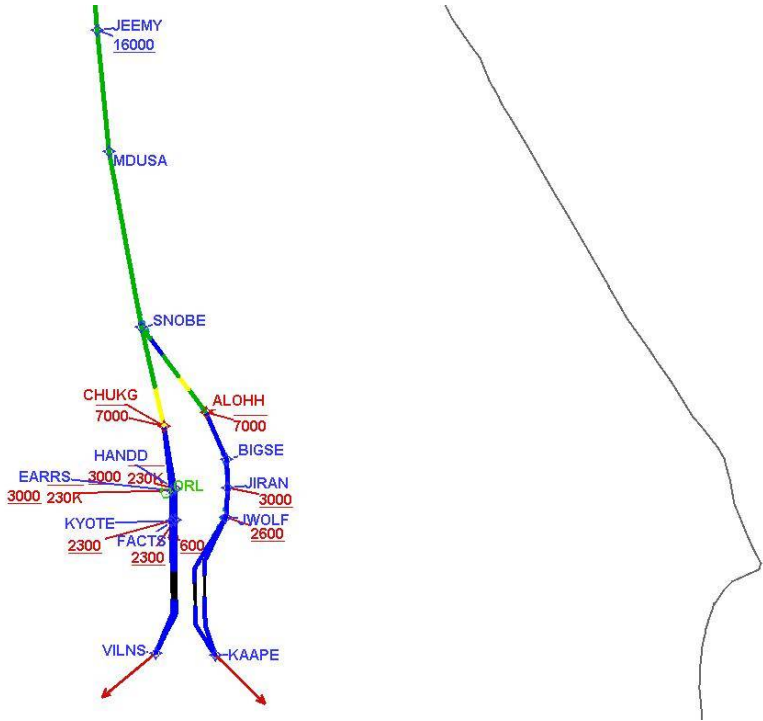
DME DME Assessment Results for JEEMY4 path KMCO:RW35L:DER_PAINN

Graphic Depiction 2



DME DME Assessment Results for JEEMY4 path KMCO:RW35L:DER_PAINN

Graphic Depiction 3



DME DME Assessment Results for JEEMY4 path KMCO:RW35R:DER_JWOLF

Results Summary	
Flyability:	Completed
DME/DME:	Completed - No Critical DMEs
Name:	Mark CTR Thompson
Project File:	C:\Users\Mark CTR Thompson\OneDrive - Federal Aviation Administration\Desktop\RNAV Projects\RNAV Projects 2025\MCO SIDs\MCO JEEMY SID\DME\KMCO JEEMY4 (RNAV) SID DME_241105.tgs
Output File:	C:\Users\Mark CTR Thompson\OneDrive - Federal Aviation Administration\Desktop\RNAV Projects\RNAV Projects 2025\MCO SIDs\MCO JEEMY SID\DME\KMCO [IFPA] JEEMY4 20241105_0812 EST\KMCO-RW35R-DER_JWOLF\KMCO JEEMY4 SID RW35R JWOLF 20241105_0812 EST.pdf
Procedure Name:	JEEMY4
Software: DmeDmePlugin:	7.4.0
Date/Time:	11/05/2024 08:12 EST
Databases:	MITRE 3DEP 3 arcsec

Failures
No Failures

Warnings
No Warnings

Informational
No Informational

Notes For Flight Check
None

Flight Plan							
Name	Type	Lat/Lon	Altitude (ft)	VNAV Mode	Ground Speed (kts)	Turn Type	Leg Type
KMCO:RW35R:DER	WP	N28° 26' 37.31", W081° 16' 57.29"	89.7	VNAV	130	FLY_BY	TF
JWOLF	WP	N28° 30' 51.68", W081° 15' 12.47"	2000	VNAV	200	FLY_BY	TF
Climb Gradient: 200.0 ft/NM							

Flyability	
Flight Type:	SID
Selected Airport:	KMCO [IFPA]
Climb Gradient:	200.0 ft/NM
Speeds:	130 at the Runway DER
	145 at the end of the VA or VI leg
	200 Ground Speed to 11000 FT
	240 Ground Speed to 18000 FT
	260 Ground Speed to 24000 FT
	340 Ground Speed above 24000 FT
Descent During a Turn:	Allowed
VNAV Mode:	Flight Plan

DME DME Assessment Results for JEEMY4 path KMCO:RW35R:DER_JWOLF

DME/DME	
RNP:	RNP 2
Flight Mode:	Manual
Line of Sight (DTED Level 0 Max):	Evaluated
Inertial Drift:	Enabled
Initial Drift:	0.558 NM
INS Drift Rate:	8.0 NM/Hour
Range Mode:	OSV
RNP Edges:	Evaluated
Min DME Range:	3.0 NM
DME Types:	DME, VOR-DME, VORTAC, TACAN
DME Include Angles:	30 to 150
Critical DMEs:	Allowed
DoD Facilities:	Included
Foreign Facilities:	Not included
High DMEs:	Included
Low DMEs:	Included
Terminal DMEs:	Included
Flight Check DMEs:	Not selected
Higher Altitudes:	Not Evaluated
Near Maximum Altitude:	Not Evaluated
Automatic ESVs:	Not enabled
Disabled DMEs:	None

DME/DME (Continued)

DMEs Used

#	Name	Lat/Lon	MAGVAR	Range	Type	Source	Critical	Status	Time	Distance
---	------	---------	--------	-------	------	--------	----------	--------	------	----------

Flight Check DME Selection

Distance [NM]	Selected DMEs	Alternate
0.0		

Inertial Drift Segments

#	Start Location	End Location	Length [NM]
1	N28° 26' 39.43", W081° 16' 57.31"	N28° 30' 51.68", W081° 15' 12.47"	4.5502

Available DMEs by Waypoints

Waypoint Before	Waypoint After	DME List	Suggested DMEs
KMCO:RW35R:DER	JWOLF		

DME DME Assessment Results for JEEMY4 path KMCO:RW35R:DER_JWOLF

User Data Files

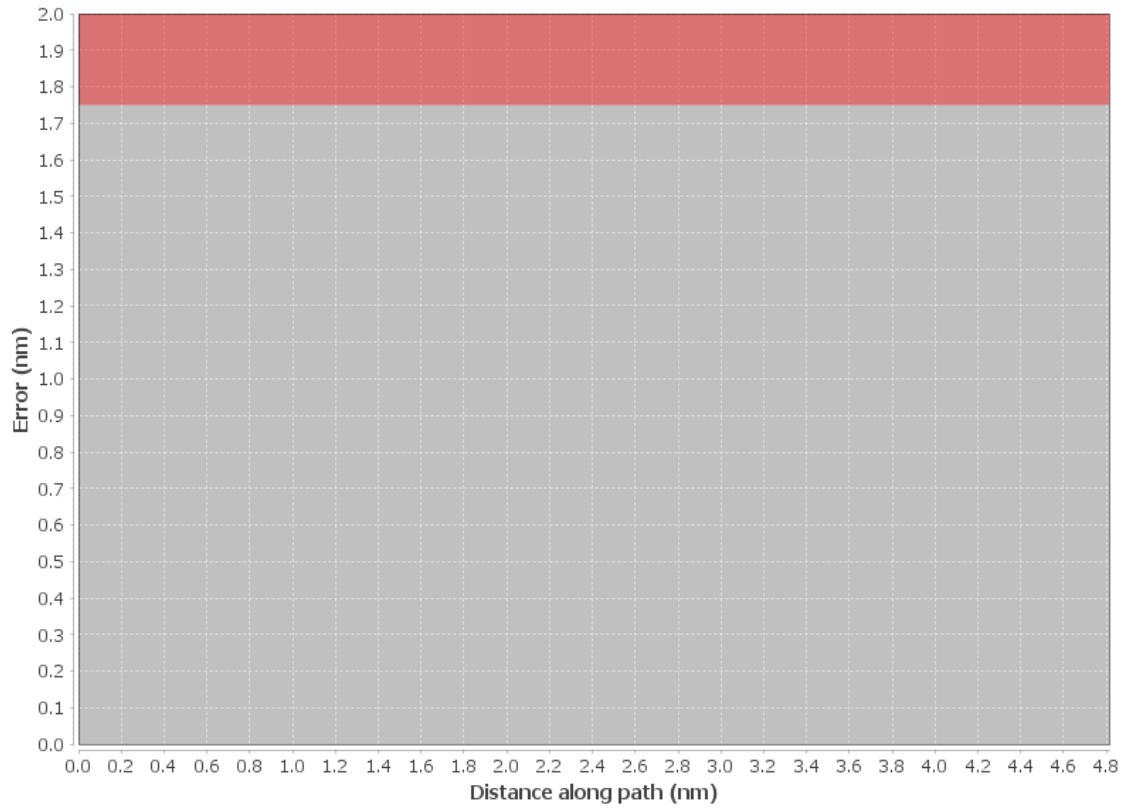
#	File Name
None	

None

User DMEs

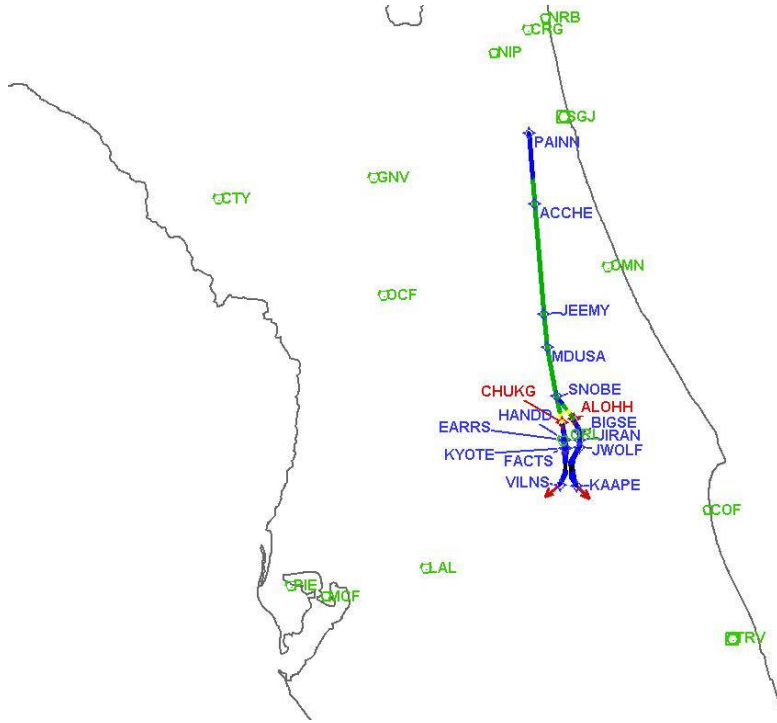
#	Name	Lat/Lon	MAGVAR	Range	Elevation [ft]	Frequency	Replaces	Status
1	OCF FAA 714002-18 OCF	N29° 10' 38.92", W082° 13' 34.80"	0.0 E	40	78.3	113.7	OCF FAA 714002-18	
ESV:		Bearing [True]: 117.0° to 180.0° Bearing [Mag]: 117.0° to 180.0°				Arc Distance: Out to 80.0 NM Altitude: 4000.0 to 20000.0 ft		
2	OCF FAA 714002-32 OCF	N29° 10' 38.92", W082° 13' 34.80"	0.0 E	40	78.3	113.7	OCF FAA 714002-32	
ESV:		Bearing [True]: 50.0° to 120.0° Bearing [Mag]: 50.0° to 120.0°				Arc Distance: Out to 80.0 NM Altitude: 5000.0 to 18000.0 ft		
3	LAL FAA 704224-41 LAL	N27° 59' 10.31", W082° 00' 50.06"	1.0 E	130	133.8	116.0	LAL FAA 704224-41	
ESV:		Bearing [True]: 360.0° to 77.0° Bearing [Mag]: 359.0° to 76.0°				Arc Distance: Out to 70.0 NM Altitude: 3000.0 to 14700.0 ft		
4	ORL FAA 694096-50 ORL	N28° 32' 33.80", W081° 20' 06.05"	0.0 E	130	101.6	112.2	ORL FAA 694096-50	
ESV:		Bearing [True]: 345.0° to 5.0° Bearing [Mag]: 345.0° to 5.0°				Arc Distance: Out to 80.0 NM Altitude: 4000.0 to 14500.0 ft		
5	OMN FAA 694106-20 OMN	N29° 18' 11.70", W081° 06' 45.71"	0.0 E	130	24	112.6	OMN FAA 694106-20	
ESV:		Bearing [True]: 190.0° to 255.0° Bearing [Mag]: 190.0° to 255.0°				Arc Distance: Out to 72.0 NM Altitude: 3000.0 to 14600.0 ft		

DME Error



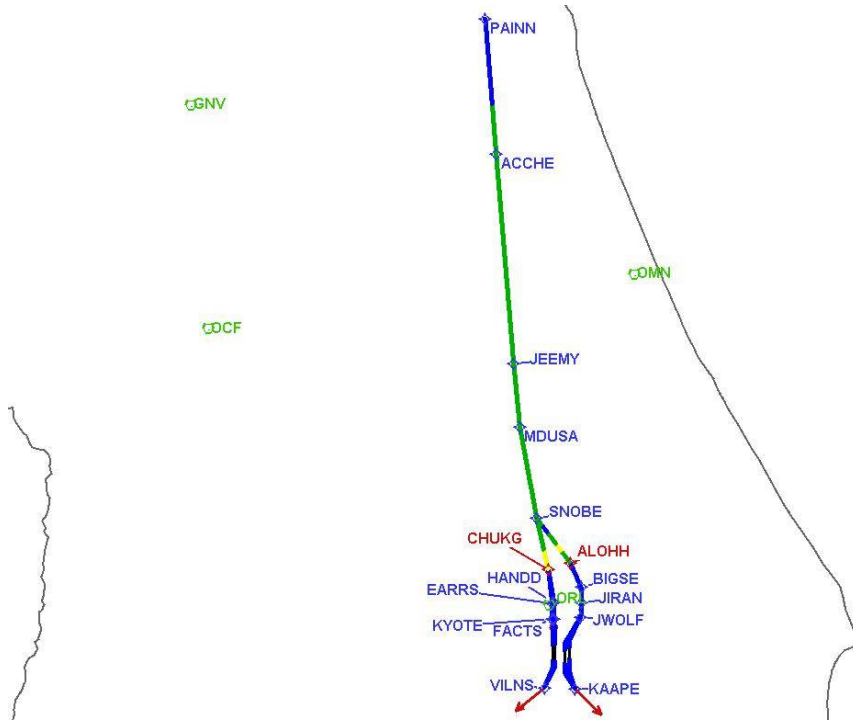
DME DME Assessment Results for JEEMY4 path KMCO:RW35R:DER_JWOLF

Graphic Depiction 1



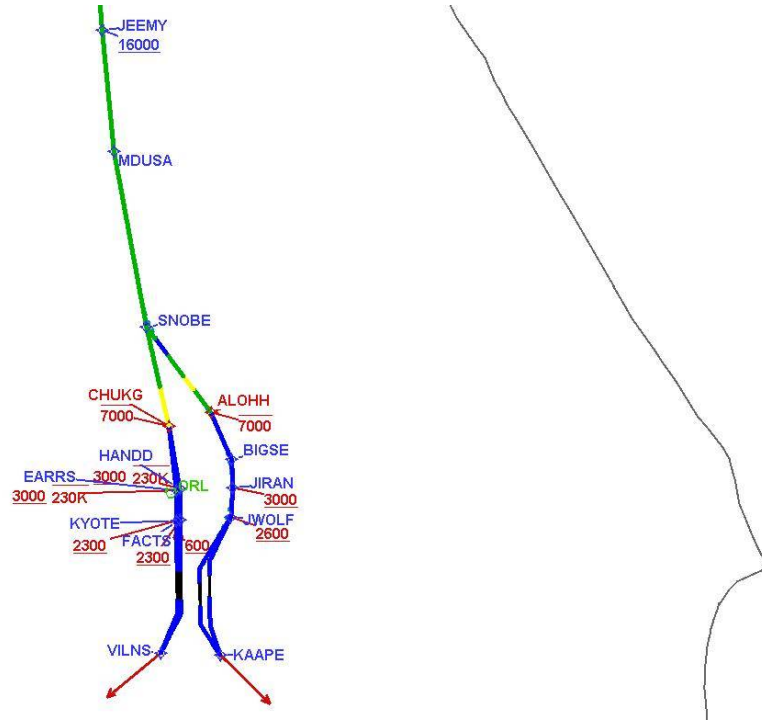
DME DME Assessment Results for JEEMY4 path KMCO:RW35R:DER_JWOLF

Graphic Depiction 2



DME DME Assessment Results for JEEMY4 path KMCO:RW35R:DER_JWOLF

Graphic Depiction 3



DME DME Assessment Results for JEEMY4 path KMCO:RW36L:DER_SNOBE

Results Summary	
Flyability:	Completed
DME/DME:	Completed - No Critical DMEs
Name:	Mark CTR Thompson
Project File:	C:\Users\Mark CTR Thompson\OneDrive - Federal Aviation Administration\Desktop\RNAV Projects\RNAV Projects 2025\MCO SIDs\MCO JEEMY SID\DME\KMCO JEEMY4 (RNAV) SID DME_241105.tgs
Output File:	C:\Users\Mark CTR Thompson\OneDrive - Federal Aviation Administration\Desktop\RNAV Projects\RNAV Projects 2025\MCO SIDs\MCO JEEMY SID\DME\KMCO [IFPA] JEEMY4 20241105_0812 EST\KMCO-RW36L-DER_SNOBE\KMCO JEEMY4 SID RW36L SNOBE 20241105_0812 EST.pdf
Procedure Name:	JEEMY4
Software: DmeDmePlugin:	7.4.0
Date/Time:	11/05/2024 08:12 EST
Databases:	MITRE 3DEP 3 arcsec

Failures
No Failures

Warnings
No Warnings

Informational
No Informational

Notes For Flight Check
None

Flight Plan							
Name	Type	Lat/Lon	Altitude (ft)	VNAV Mode	Ground Speed (kts)	Turn Type	Leg Type
KMCO:RW36L:DER	WP	N28° 26' 53.86", W081° 19' 37.11"	92.5	VNAV	130	FLY_OVER	TF
KYOTE	WP	N28° 30' 35.80", W081° 19' 39.50"	2000	VNAV	200	FLY_BY	TF
EARRS	WP	N28° 32' 47.62", W081° 19' 40.52"	2500	VNAV	230	FLY_BY	TF
CHUKG	WP	N28° 37' 25.19", W081° 20' 16.97"	4000	VNAV	230	FLY_BY	TF
SNOBE	WP	N28° 44' 32.37", W081° 22' 06.90"	4000	VNAV	200	FLY_BY	TF
Climb Gradient: 200.0 ft/NM							

Flyability	
Flight Type:	SID
Selected Airport:	KMCO [IFPA]
Climb Gradient:	200.0 ft/NM
Speeds:	130 at the Runway DER
	145 at the end of the VA or VI leg
	200 Ground Speed to 11000 FT
	240 Ground Speed to 18000 FT
	260 Ground Speed to 24000 FT
	340 Ground Speed above 24000 FT
Descent During a Turn:	Allowed
VNAV Mode:	Flight Plan

DME DME Assessment Results for JEEMY4 path KMCO:RW36L:DER_SNOBE

DME/DME	
RNP:	RNP 2
Flight Mode:	Manual
Line of Sight (DTED Level 0 Max):	Evaluated
Inertial Drift:	Enabled
Initial Drift:	0.558 NM
INS Drift Rate:	8.0 NM/Hour
Range Mode:	OSV
RNP Edges:	Evaluated
Min DME Range:	3.0 NM
DME Types:	DME, VOR-DME, VORTAC, TACAN
DME Include Angles:	30 to 150
Critical DMEs:	Allowed
DoD Facilities:	Included
Foreign Facilities:	Not included
High DMEs:	Included
Low DMEs:	Included
Terminal DMEs:	Included
Flight Check DMEs:	Not selected
Higher Altitudes:	Not Evaluated
Near Maximum Altitude:	Not Evaluated
Automatic ESVs:	Not enabled
Disabled DMEs:	None

DME/DME (Continued)										
DMEs Used										
#	Name	Lat/Lon	MAGVAR	Range	Type	Source	Critical	Status	Time	Distance
1	OMN	N29° 18' 11.70", W081° 06' 45.71"	0.0 E	130	H		NO	Enabled	35.2 %	40.2 %
2	OCF	N29° 10' 38.92", W082° 13' 34.80"	0.0 E	40	L		NO	Enabled	35.2 %	40.2 %
3	LAL	N27° 59' 10.31", W082° 00' 50.06"	1.0 E	130	H		NO	Enabled	35.2 %	40.2 %
4	ORL	N28° 32' 33.80", W081° 20' 06.05"	0.0 E	130	H		NO	Enabled	13.5 %	15.4 %

Flight Check DME Selection						
Distance [NM]	Selected DMEs					Alternate
0.0						
10.5	OCF	LAL	OMN	ORL		
13.3	OCF	LAL	OMN			
17.7						

Inertial Drift Segments			
#	Start Location	End Location	Length [NM]
1	N28° 26' 56.01", W081° 19' 37.13"	N28° 37' 25.19", W081° 20' 16.97"	10.506
2	N28° 44' 28.62", W081° 22' 05.93"	N28° 44' 32.37", W081° 22' 06.90"	0.0639

Available DMEs by Waypoints			
Waypoint Before	Waypoint After	DME List	Suggested DMEs
KMCO:RW36L:DER	KYOTE		
KYOTE	EARRS		
EARRS	CHUKG	OMN, OCF, LAL, ORL	
CHUKG	SNOBE	OMN, OCF, LAL, ORL	

DME DME Assessment Results for JEEMY4 path KMCO:RW36L:DER_SNOBE

User Data Files

#	File Name
None	

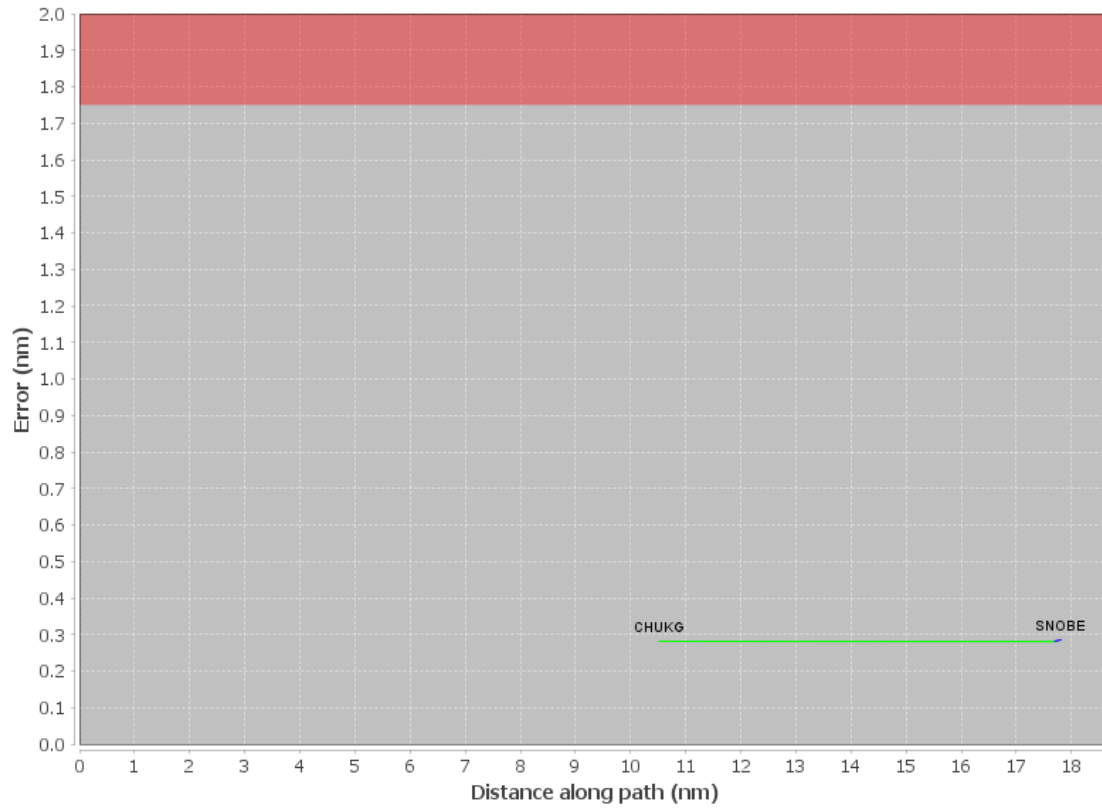
None

User DMEs

#	Name	Lat/Lon	MAGVAR	Range	Elevation [ft]	Frequency	Replaces	Status
1	OCF FAA 714002-18 OCF	N29° 10' 38.92", W082° 13' 34.80"	0.0 E	40	78.3	113.7	OCF FAA 714002-18	
ESV:		Bearing [True]: 117.0° to 180.0° Bearing [Mag]: 117.0° to 180.0°				Arc Distance: Out to 80.0 NM Altitude: 4000.0 to 20000.0 ft		
2	OCF FAA 714002-32 OCF	N29° 10' 38.92", W082° 13' 34.80"	0.0 E	40	78.3	113.7	OCF FAA 714002-32	
ESV:		Bearing [True]: 50.0° to 120.0° Bearing [Mag]: 50.0° to 120.0°				Arc Distance: Out to 80.0 NM Altitude: 5000.0 to 18000.0 ft		
3	LAL FAA 704224-41 LAL	N27° 59' 10.31", W082° 00' 50.06"	1.0 E	130	133.8	116.0	LAL FAA 704224-41	
ESV:		Bearing [True]: 360.0° to 77.0° Bearing [Mag]: 359.0° to 76.0°				Arc Distance: Out to 70.0 NM Altitude: 3000.0 to 14700.0 ft		
4	ORL FAA 694096-50 ORL	N28° 32' 33.80", W081° 20' 06.05"	0.0 E	130	101.6	112.2	ORL FAA 694096-50	
ESV:		Bearing [True]: 345.0° to 5.0° Bearing [Mag]: 345.0° to 5.0°				Arc Distance: Out to 80.0 NM Altitude: 4000.0 to 14500.0 ft		
5	OMN FAA 694106-20 OMN	N29° 18' 11.70", W081° 06' 45.71"	0.0 E	130	24	112.6	OMN FAA 694106-20	
ESV:		Bearing [True]: 190.0° to 255.0° Bearing [Mag]: 190.0° to 255.0°				Arc Distance: Out to 72.0 NM Altitude: 3000.0 to 14600.0 ft		

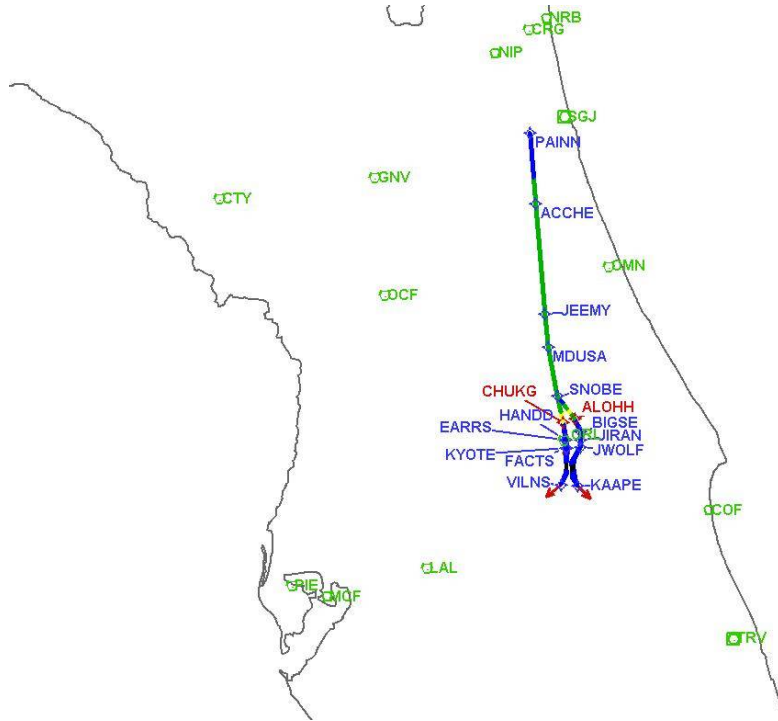
DME DME Assessment Results for JEEMY4 path KMCO:RW36L:DER_SNOBE

DME Error



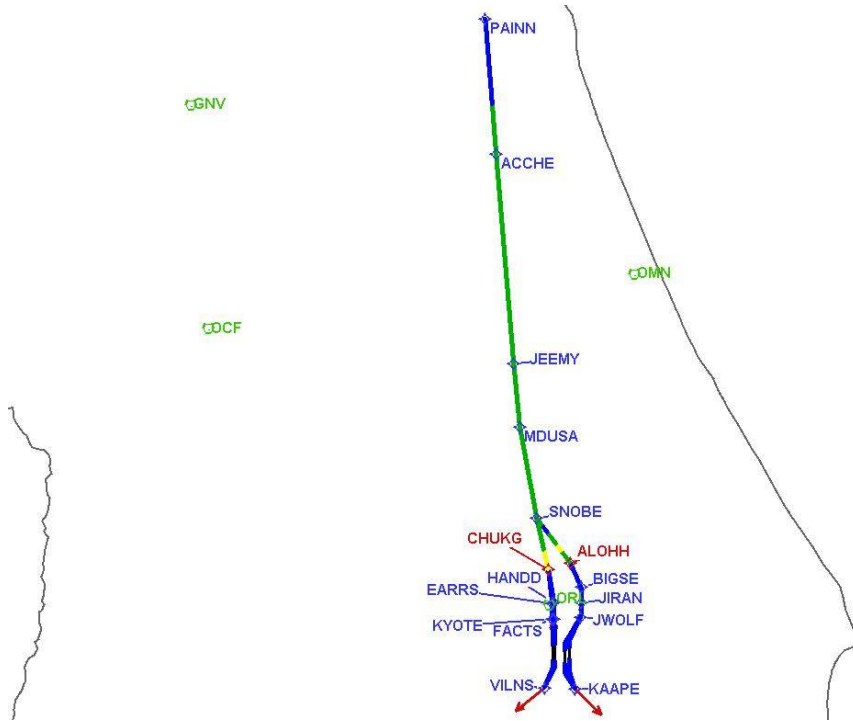
DME DME Assessment Results for JEEMY4 path KMCO:RW36L:DER_SNOBE

Graphic Depiction 1



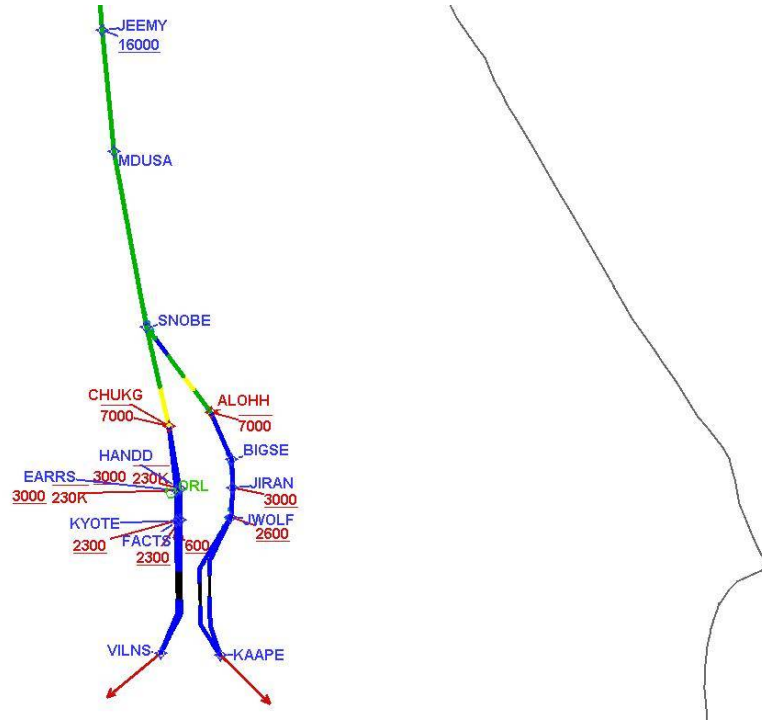
DME DME Assessment Results for JEEMY4 path KMCO:RW36L:DER_SNOBE

Graphic Depiction 2



DME DME Assessment Results for JEEMY4 path KMCO:RW36L:DER_SNOBE

Graphic Depiction 3



DME DME Assessment Results for JEEMY4 path KMCO:RW36R:DER_CHUKG

Results Summary	
Flyability:	Completed
DME/DME:	Completed - No Critical DMEs
Name:	Mark CTR Thompson
Project File:	C:\Users\Mark CTR Thompson\OneDrive - Federal Aviation Administration\Desktop\RNAV Projects\RNAV Projects 2025\MCO SIDs\MCO JEEMY SID\DME\KMCO JEEMY4 (RNAV) SID DME_241105.tgs
Output File:	C:\Users\Mark CTR Thompson\OneDrive - Federal Aviation Administration\Desktop\RNAV Projects\RNAV Projects 2025\MCO SIDs\MCO JEEMY SID\DME\KMCO [IFPA] JEEMY4 20241105_0812 EST\KMCO-RW36R-DER_CHUKG\KMCO JEEMY4 SID RW36R CHUKG 20241105_0812 EST.pdf
Procedure Name:	JEEMY4
Software: DmeDmePlugin:	7.4.0
Date/Time:	11/05/2024 08:12 EST
Databases:	MITRE 3DEP 3 arcsec

Failures
No Failures

Warnings
No Warnings

Informational
No Informational

Notes For Flight Check
None

Flight Plan							
Name	Type	Lat/Lon	Altitude (ft)	VNAV Mode	Ground Speed (kts)	Turn Type	Leg Type
KMCO:RW36R:DER	WP	N28° 26' 54.00", W081° 19' 20.30"	92.4	VNAV	130	FLY_OVER	TF
FACTS	WP	N28° 30' 39.75", W081° 19' 22.71"	2000	VNAV	200	FLY_BY	TF
HANDD	WP	N28° 32' 54.38", W081° 19' 23.95"	2500	VNAV	230	FLY_BY	TF
CHUKG	WP	N28° 37' 25.19", W081° 20' 16.97"	4000	VNAV	230	FLY_BY	TF
Climb Gradient: 200.0 ft/NM							

Flyability	
Flight Type:	SID
Selected Airport:	KMCO [IFPA]
Climb Gradient:	200.0 ft/NM
Speeds:	130 at the Runway DER
	145 at the end of the VA or VI leg
	200 Ground Speed to 11000 FT
	240 Ground Speed to 18000 FT
	260 Ground Speed to 24000 FT
	340 Ground Speed above 24000 FT
Descent During a Turn:	Allowed
VNAV Mode:	Flight Plan

DME DME Assessment Results for JEEMY4 path KMCO:RW36R:DER_CHUKG

DME/DME	
RNP:	RNP 2
Flight Mode:	Manual
Line of Sight (DTED Level 0 Max):	Evaluated
Inertial Drift:	Enabled
Initial Drift:	0.558 NM
INS Drift Rate:	8.0 NM/Hour
Range Mode:	OSV
RNP Edges:	Evaluated
Min DME Range:	3.0 NM
DME Types:	DME, VOR-DME, VORTAC, TACAN
DME Include Angles:	30 to 150
Critical DMEs:	Allowed
DoD Facilities:	Included
Foreign Facilities:	Not included
High DMEs:	Included
Low DMEs:	Included
Terminal DMEs:	Included
Flight Check DMEs:	Not selected
Higher Altitudes:	Not Evaluated
Near Maximum Altitude:	Not Evaluated
Automatic ESVs:	Not enabled
Disabled DMEs:	None

DME/DME (Continued)										
DMEs Used										
#	Name	Lat/Lon	MAGVAR	Range	Type	Source	Critical	Status	Time	Distance
1	OMN	N29° 18' 11.70", W081° 06' 45.71"	0.0 E	130	H		NO	Enabled		
2	OCF	N29° 10' 38.92", W082° 13' 34.80"	0.0 E	40	L		NO	Enabled		
3	LAL	N27° 59' 10.31", W082° 00' 50.06"	1.0 E	130	H		NO	Enabled		
4	ORL	N28° 32' 33.80", W081° 20' 06.05"	0.0 E	130	H		NO	Enabled		

Flight Check DME Selection					
Distance [NM]	Selected DMEs				Alternate
0.0					
10.6	OCF	LAL	OMN	ORL	

Inertial Drift Segments			
#	Start Location	End Location	Length [NM]
1	N28° 26' 56.15", W081° 19' 20.33"	N28° 37' 25.19", W081° 20' 16.97"	10.5398

Available DMEs by Waypoints			
Waypoint Before	Waypoint After	DME List	Suggested DMEs
KMCO:RW36R:DER	FACTS		
FACTS	HANDD		
HANDD	CHUKG	OMN, OCF, LAL, ORL	

DME DME Assessment Results for JEEMY4 path KMCO:RW36R:DER_CHUKG

User Data Files

#	File Name
None	

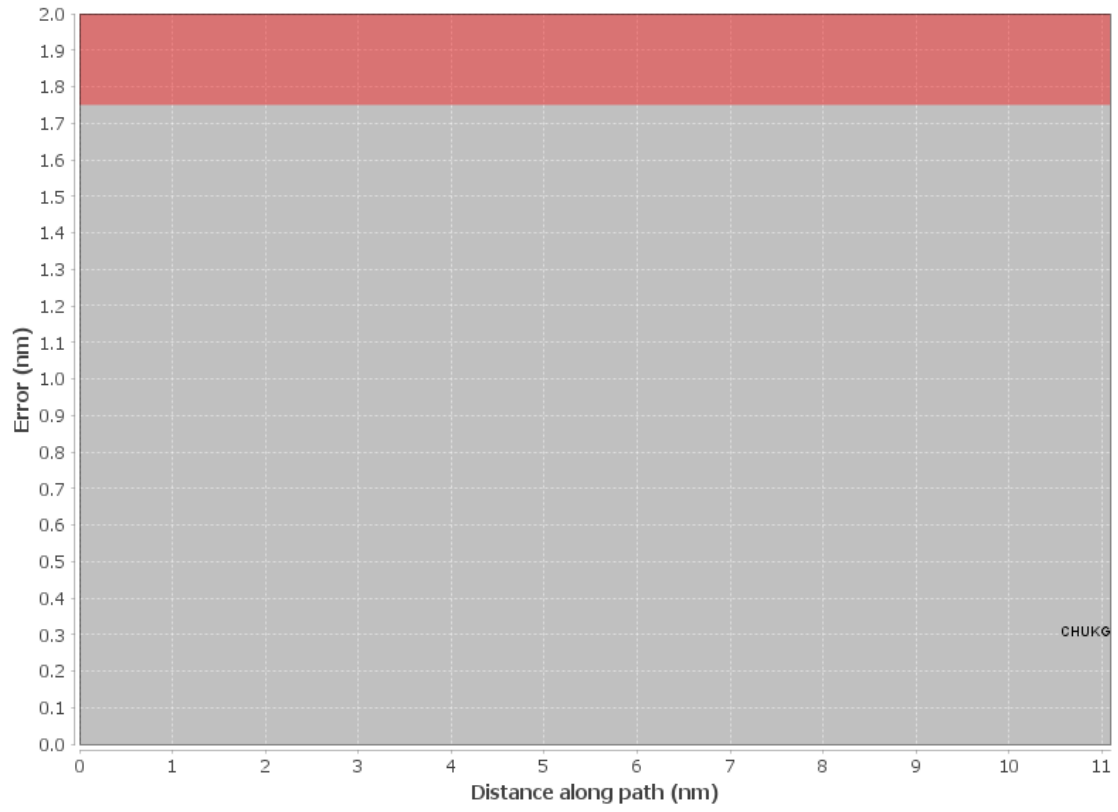
None

User DMEs

#	Name	Lat/Lon	MAGVAR	Range	Elevation [ft]	Frequency	Replaces	Status
1	OCF FAA 714002-18 OCF	N29° 10' 38.92", W082° 13' 34.80"	0.0 E	40	78.3	113.7	OCF FAA 714002-18	
ESV:		Bearing [True]: 117.0° to 180.0° Bearing [Mag]: 117.0° to 180.0°				Arc Distance: Out to 80.0 NM Altitude: 4000.0 to 20000.0 ft		
2	OCF FAA 714002-32 OCF	N29° 10' 38.92", W082° 13' 34.80"	0.0 E	40	78.3	113.7	OCF FAA 714002-32	
ESV:		Bearing [True]: 50.0° to 120.0° Bearing [Mag]: 50.0° to 120.0°				Arc Distance: Out to 80.0 NM Altitude: 5000.0 to 18000.0 ft		
3	LAL FAA 704224-41 LAL	N27° 59' 10.31", W082° 00' 50.06"	1.0 E	130	133.8	116.0	LAL FAA 704224-41	
ESV:		Bearing [True]: 360.0° to 77.0° Bearing [Mag]: 359.0° to 76.0°				Arc Distance: Out to 70.0 NM Altitude: 3000.0 to 14700.0 ft		
4	ORL FAA 694096-50 ORL	N28° 32' 33.80", W081° 20' 06.05"	0.0 E	130	101.6	112.2	ORL FAA 694096-50	
ESV:		Bearing [True]: 345.0° to 5.0° Bearing [Mag]: 345.0° to 5.0°				Arc Distance: Out to 80.0 NM Altitude: 4000.0 to 14500.0 ft		
5	OMN FAA 694106-20 OMN	N29° 18' 11.70", W081° 06' 45.71"	0.0 E	130	24	112.6	OMN FAA 694106-20	
ESV:		Bearing [True]: 190.0° to 255.0° Bearing [Mag]: 190.0° to 255.0°				Arc Distance: Out to 72.0 NM Altitude: 3000.0 to 14600.0 ft		

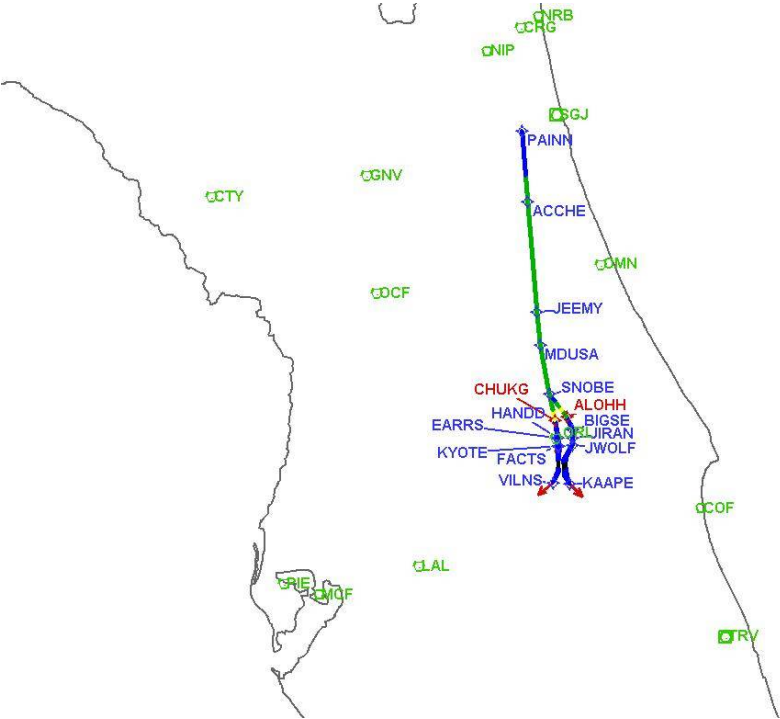
DME DME Assessment Results for JEEMY4 path KMCO:RW36R:DER_CHUKG

DME Error



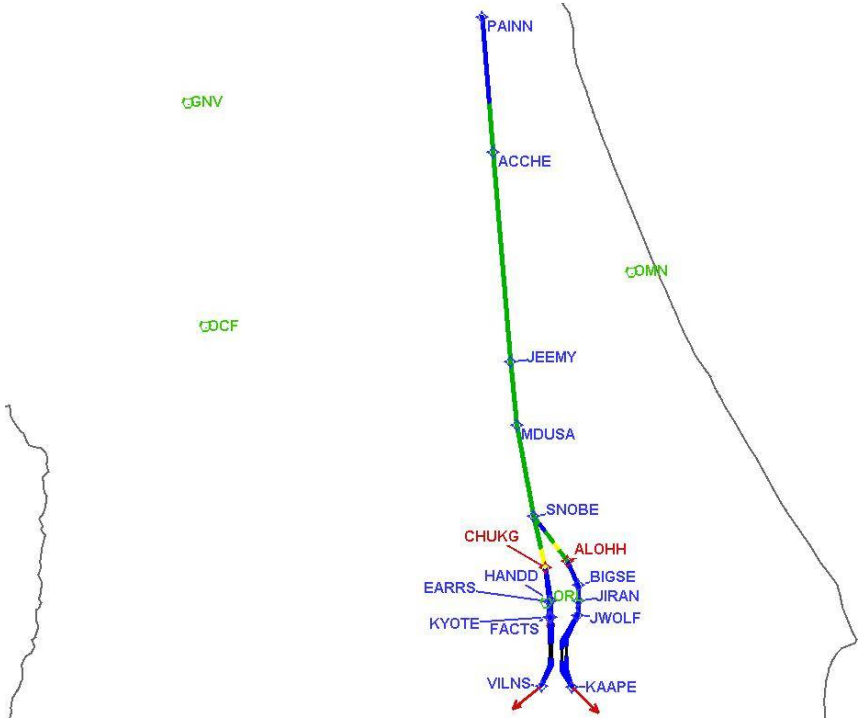
DME DME Assessment Results for JEEMY4 path KMCO:RW36R:DER_CHUKG

Graphic Depiction 1



DME DME Assessment Results for JEMY4 path KMCO:RW36R:DER_CHUKG

Graphic Depiction 2



DME DME Assessment Results for JEEMY4 path KMCO:RW36R:DER_CHUKG

Graphic Depiction 3

